

11,660

(A)

B.M. Railroad Spike in West side of Blower Pole, No. 250548E approximately 1000' South of Lower Azusa Road West side of ARDEN WAY ELEV. 297.35 Ref. C.S. District No. 15, Sierra Madre - Arcadia Trunk Sewer, Div. No. 15, Sheet 7, P.C. 841.

- (1) USE STANDARD MANHOLE FRAME AND COVER S-a-117.
- (2) USE CEMENT MORTAR FOR ALL VITRIFIED CLAY PIPE JOINTS.
- (3) ALL STRUCTURES SHALL BE BRICK SEWER STRUCTURES 6'-0" x 10'-0" ABOVE FINISHED GRADE EXCEPT AS NOTED.
- (4) CONSTRUCT TOPS OF ALL STRUCTURES IN RIGHTS OF WAY.
- (5) USE STANDARD STRENGTH PIPE.
- (6) RESURFACE ALL TRENCHES IN ROAD WITH SAME OR EQUAL QUALITY MATERIAL.

PROFILE ALIGNMENT AND GRADE OF
ARDEN DAIRY SEWER
 IN
SANITARY SEWER RIGHT OF WAY
 IN PORTION OF RO. SAN FRANCISQUITO
 P. 1, 32

NOTE: (1) REPRESENTATIVE OF THE COUNTY ENGINEER SHALL SURVEY OR LAY OUT ANY PORTION OF THE WORK THE OWNER OR HIS AUTHORIZED REPRESENTATIVE SHALL FURNISH THE COUNTY ENGINEER WITH GRADE SHEETS AND STATIONS OF ALL HOUSE CONNECTIONS AND BRANCHES AND SHALL PROVIDE STAKES FOR THEM AT THEIR PROPER LOCATIONS WITH STATIONING PLAINLY MARKED. ANY CHANGE OF LOCATION SHALL BE REQUESTED IN WRITING BY THE OWNER OR HIS REPRESENTATIVE. NO REVISIONS SHALL BE MADE IN THESE PLANS WITHOUT THE APPROVAL OF THE COUNTY ENGINEER. (2) PROVIDE STAKES ON THE PROPERTY LINES OR PROPERTY LINES PRODUCED AT RIGHT ANGLES TO THE SEWER LINE AT THE CENTER LINE OF EACH MANHOLE.

PRIVATE CONTRACT NO. 1461
 W.S. 44
 SHEET 1 OF 1 SHEET July 1950

PREPARED IN THE OFFICES OF
ADAMS & ELLS
 ENGINEERS

By *Harold J. Adams* Date: 10.23.50
 REG. C.E. NO. 7668

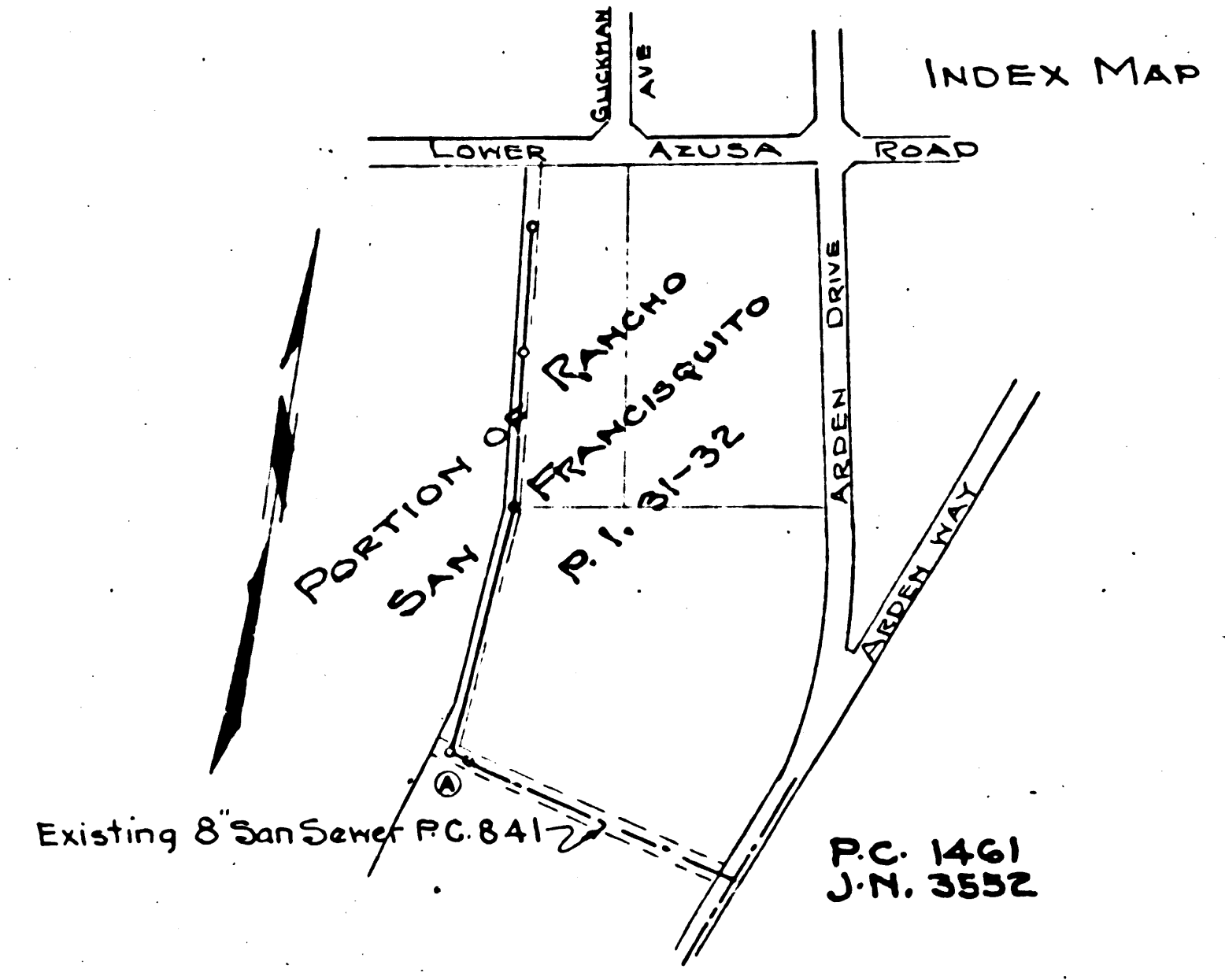
FOR LEGEND
 See Plan S-a-64.

NOTE: GRADES TO WHICH THIS IMPROVEMENT IS TO BE CONSTRUCTED ARE SHOWN ON PLANS AND PROFILE GRADE POINTS FOR TOP OF CURB, CENTER LINE OF STREET OR CENTER LINE OF ALLEY ARE SHOWN BY CIRCLES ON PROFILES. AT ALL POINTS BETWEEN DESIGNATED POINTS THE GRADE SHALL BE ESTABLISHED SO AS TO CONFORM TO A STRAIGHT LINE DRAWN BETWEEN SAID DESIGNATED POINTS. ELEVATIONS ARE IN FEET ABOVE U.S.C. & G.S. DATUM OR MEAN SEA LEVEL. THIS DRAWING AND THE DATA HEREON ARE HEREBY MADE A PART OF THE SPECIFICATIONS. WORK SHALL BE CONSTRUCTED ACCORDING TO SPECIFICATIONS ON FILE IN THE OFFICE OF THE COUNTY ENGINEER AND SHALL BE PROSECUTED ONLY IN THE PRESENCE OF THE COUNTY ENGINEER. BEFORE WORK CAN BE STARTED, THE CONTRACTOR MUST MAKE A DEPOSIT WITH THE COUNTY ENGINEER SIX L.A. COUNTY ENGINEERING BLDG. SUFFICIENT TO COVER THE COST OF CONSTRUCTION, INSPECTION AND RECORD PLANS. APPROVAL OF THIS PLAN BY THE COUNTY OF LOS ANGELES DOES NOT CONSTITUTE A REPRESENTATION AS TO THE ACCURACY OF THE LOCATION OF, OR THE EXISTENCE OR NON-EXISTENCE OF ANY UNDERGROUND UTILITY PIPE OR STRUCTURE WITHIN THE LIMITS OF THIS PROJECT.

COUNTY OF LOS ANGELES, CALIFORNIA.

APPROVED *Edmund* COUNTY ENGINEER Date: 10-23-50
 APPROVED *William* CHIEF ENGINEER OF COUNTY SANITATION DISTRICT NO. 18

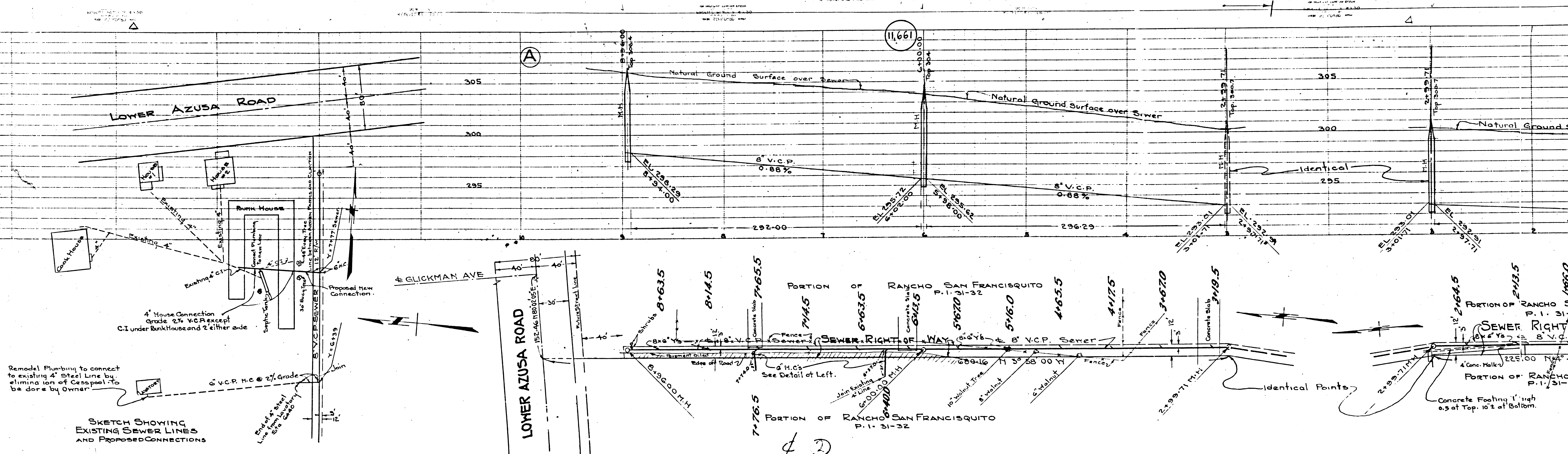
CHECKED BY *H.L. Sullivan* Date: 10-23-50
 OFFICE OF COUNTY ENGINEER, REG. NO. 6412



ARDEN DAIRY SEWER P.C. 1461 J.N. 3552

41

12-13-50
 W.S. 203, LOT.



Remodel Plumbing to connect to existing 4" Steel Line by elimination of Cesspool. To be done by Owner.

4" House Connection Grade 2% V.C.P. except C.I. under Bankhouse and 2' either side

SKETCH SHOWING EXISTING SEWER LINES AND PROPOSED CONNECTIONS

End of 4" Steel Line from Laundry Site

Proposed New Connection

LOWER AZUSA ROAD

GLICKMAN AVE

PORTION OF RANCHO SAN FRANCISCO P. 11-31-32

SEWER RIGHT OF WAY

PORTION OF RANCHO SAN FRANCISCO P. 11-31-32

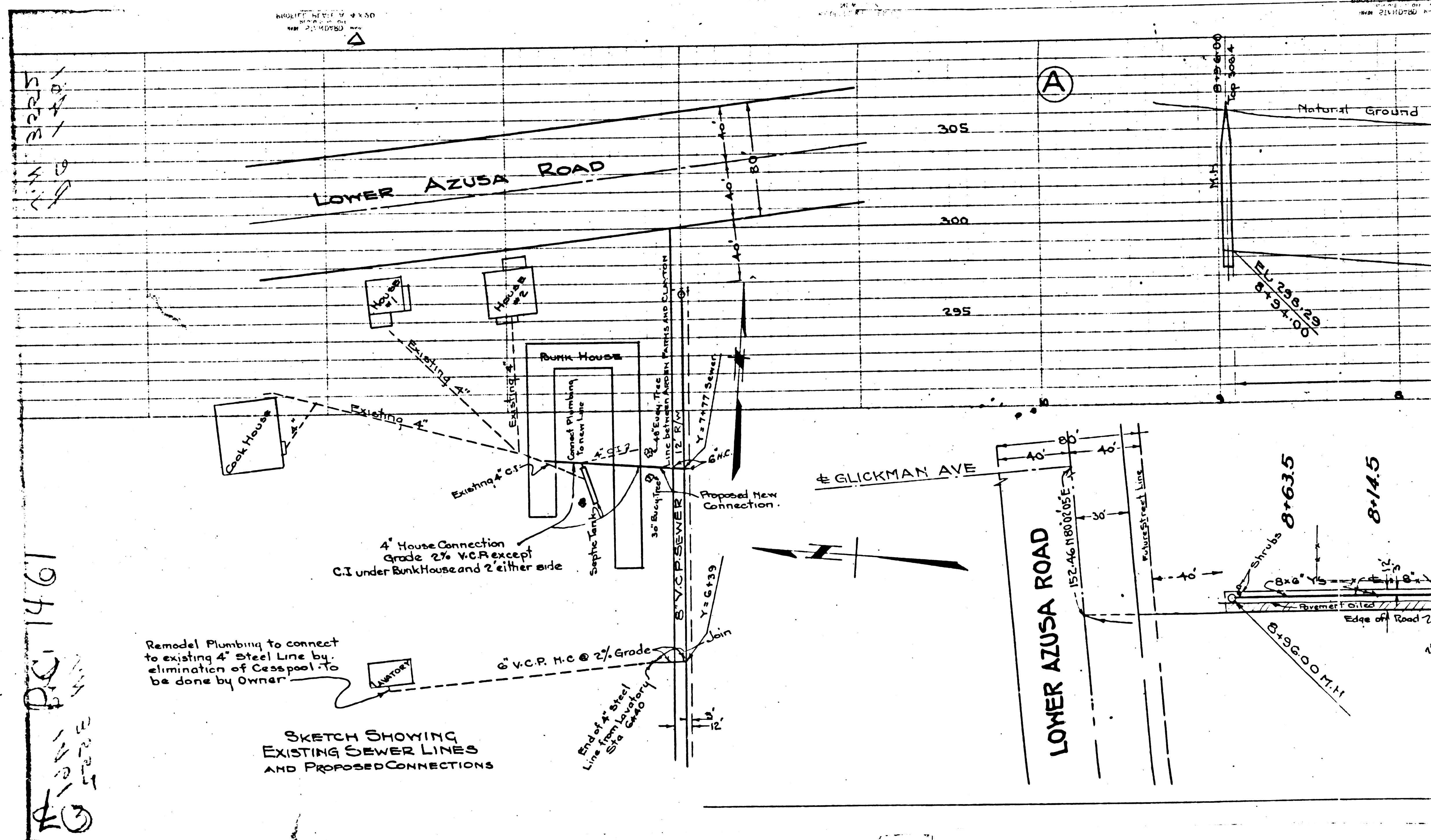
PORTION OF RANCHO SAN FRANCISCO P. 11-31-32

SEWER RIGHT OF WAY

PORTION OF RANCHO SAN FRANCISCO P. 11-31-32

Concrete Footing 1' high 0.5 at Top, 10' at Bottom

②



Remodel Plumbing to connect to existing 4" Steel Line by elimination of Cesspool. To be done by Owner

SKETCH SHOWING EXISTING SEWER LINES AND PROPOSED CONNECTIONS

PC 1461
 1/2" = 10'