

- (12,780)
1. USE STANDARD MANHOLE FRAME AND COVER 5'-x-7'
 2. USE STANDARD STRENGTH PIPE (EXCEPT AS NOTED)
 3. USE CEMENT MORTAR FOR ALL VITRIFIED CLAY PIPE JOINTS
 4. RESURFACE ALL TRENCH WITHIN PAVED AREA TO MEET LOS ANGELES COUNTY ROAD DEPT. REQUIREMENTS IN ACCORDANCE WITH PERMIT.
 5. CONSTRUCT HOUSE CONNECTIONS WITH INVERT AT PROPERTY LINE (5) FEET BELOW CURB GRADE.
 6. ALL STRUCTURES SHALL BE BRICK SEWER STRUCTURES, 5'-x-7'
- D.M. - 54 501 208 Elev. 37.720 S.D. 12.100
40' North & Carson St & 50' West
of Manana Ave.

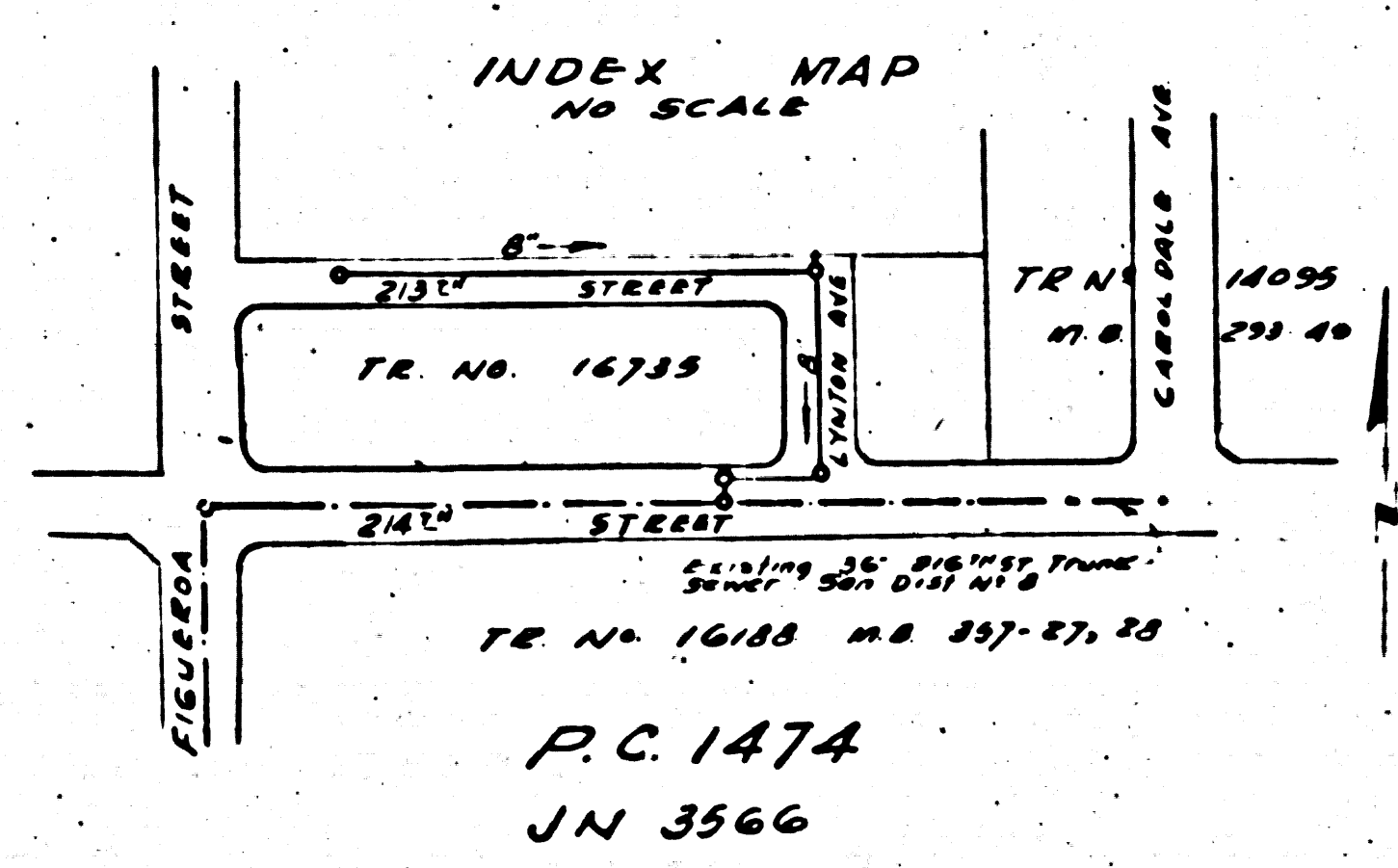
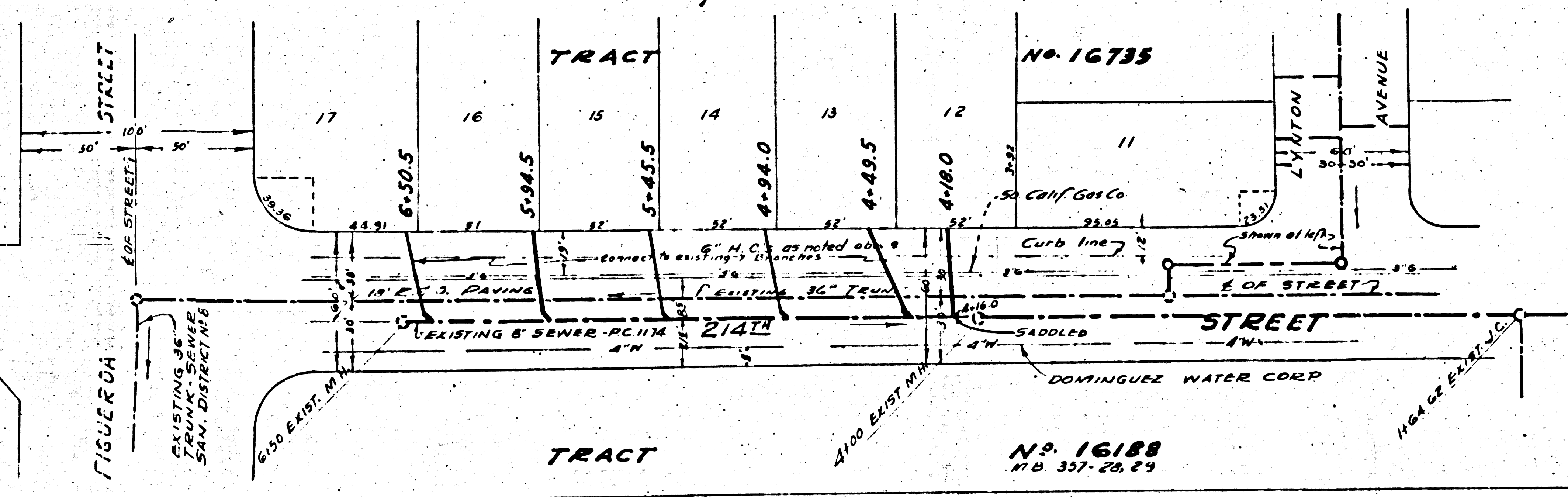
PROFILE, ALIGNMENT, AND GRADE OF
SANITARY SEWERS
TO BE CONSTRUCTED IN
213TH STREET &
LYNTON AVENUE
IN TRACT NO. 16735
AND IN
214TH STREET
BETWEEN FIGUEROA ST. AND LYNTON AVE.
PRIVATE CONTRACT No. 1474
M.S. 28
SHEET 1 OF 1
JUNE 23 1950

Note: No representation of the County Engineer will survey or layout any portion of the work. The owner or his authorized representative shall furnish the County Engineer with grade sheets and stations of all house connections and Y branches and shall provide access for them at their expense. Locations with minimum sanitary easement. Any change of location shall be requested in writing by the owner or his representative. No revisions shall be made in these plans without approval of the County Engineer.

Note: Provide stakes on the property lines or property lines produced at right angles to the sewer line of the center line of each manhole.

SCALE: VERT. 1"=4'
HORIZ. 1"=40'

PREPARED BY TWO OFFICES OF
BARCLAY SURVEYING COMPANY
BY: *[Signature]*
R.R. 1187



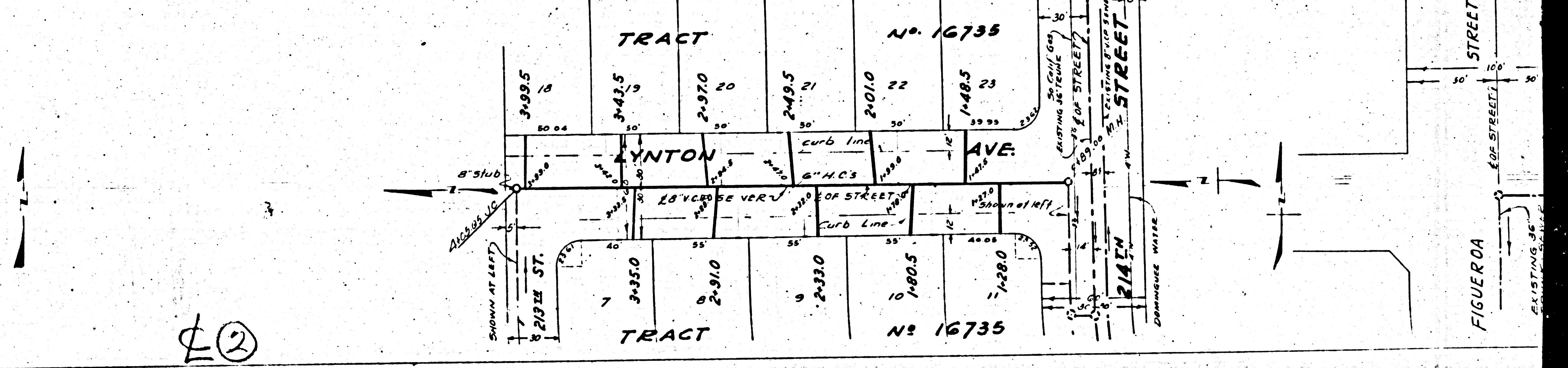
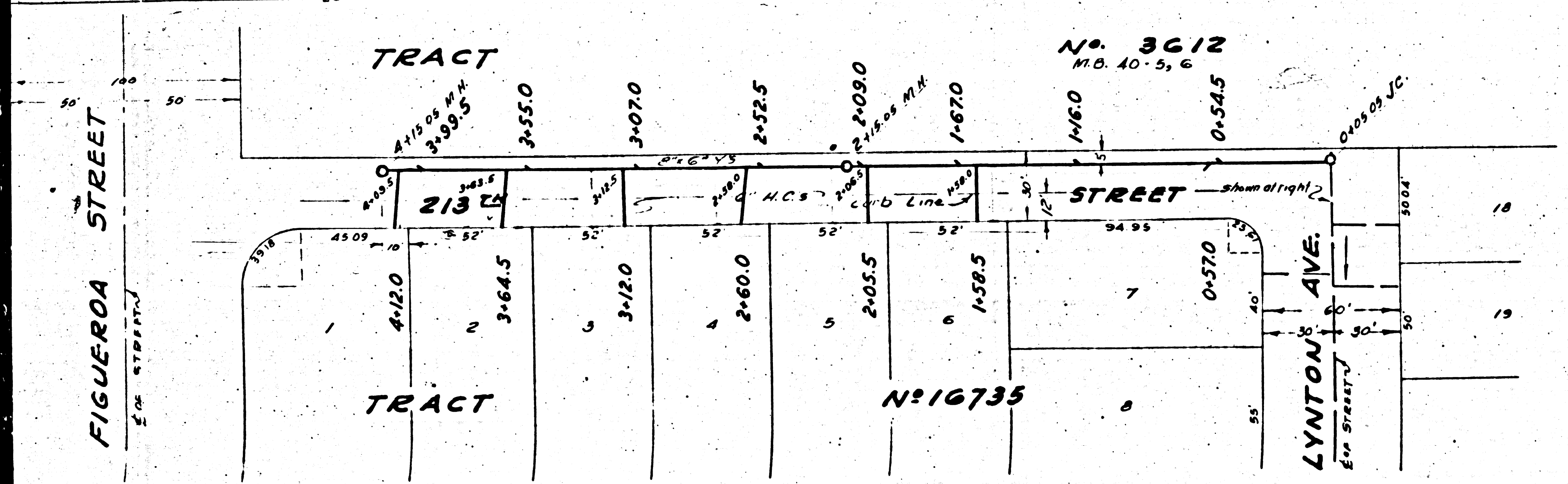
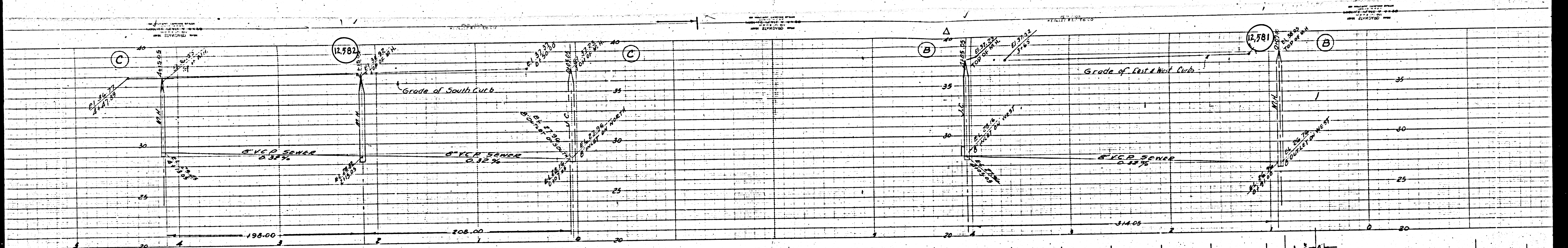
- Note: Grades to which this improvement is to be constructed are shown on plan and profile.
1. Grade points for top of curb, center line of street are shown by circles on profiles. At all points between designated points the grade shall be established so as to conform to a straight line drawn between said designated points.
 2. Elevations are in feet above U.S.G.S. datum or mean sea level.
 3. This drawing and the data hereon are hereby made a part of the specifications.
 4. Work shall be constructed according to specifications on file in the office of County Engineer and shall be prosecuted only in the presence of the County Engineer.
 5. Before work can be started, the contractor must obtain a permit to excavate in County streets from the L.A. County Road Dept. on 50 Main Street and make a deposit with the County Engineer, 108 W. Second Street, sufficient to cover the cost of construction inspection and record plans.
 6. Approval of this plan by the County of Los Angeles does not constitute a representation as to the accuracy of the location of the existence or non-existence of any underground utility, pipe, or structure within the limits of this project.

APPROVED: *[Signature]*
Chief County Engineer

APPROVED: *[Signature]*
Chief, Division of County Sanitation District No. 5

JAN 12 1951

CHECKED BY: *[Signature]* 12-21-50
OFFICE OF COUNTY ENGINEER
R.R. 6112



②

SEE P.C. 1474

SEE P.C. 1474

③

