

PLEASE REFER TO PLAN NO. 5-0-64
 Horizontal Curve & Lateral Sewer
 1/2" = 1' H. and 1" = 10' V.

1. USE STANDARD MANHOLE FRAMES AND COVERS - 3'-0" - 11".
 2. USE STANDARD STRENGTH PIPE (EXCEPT AS NOTED).
 3. CONSTRUCT BRIDGE CONNECTIONS AS PER STANDARD SPECIFICATIONS WITH
 INVERT AT PROPERTY LINE 25' BELOW GRADE OF GROUND EXCEPT AS NOTED.
 4. ENCASE FOUR FEET OF SEWER AT POINTS OF INTERFERENCE WITH POLES
 AS PER PLAN 5-0-64.
 5. USE CEMENT MORTAR FOR ALL V.G.P. JOINTS.
 6. ALL SEWER STRUCTURES SHALL BE BUILT AS PER STRUCTURES AND SHALL BE
 CONSTRUCTED AS PER STD. PLAN 5-4-10.
 7. CONSTRUCT TOP OF PIPE SEWER STRUCTURES IN RIGHTS OF WAY SIX INCHES (6")
 ABOVE FINISH GRADE.

NOTE:
 NO REPRESENTATIVE OF THE COUNTY ENGINEER WILL SURVEY OR LAY OUT ANY
 PORTION OF THE WORK. THE OWNER OR HIS AUTHORIZED REPRESENTATIVE SHALL
 FURNISH THE COUNTY ENGINEER WITH GRADE SHEETS AND STAKES OF ALL
 HOUSE CONNECTIONS AND Y-BRANCHES, AND SHALL PROVIDE STAKES FOR
 THEM AT THEIR PROPER LOCATIONS WITH STATIONS PLAINLY MARKED. ANY
 CHANGE OF LOCATION SHALL BE REQUESTED IN WRITING BY THE OWNER OR
 HIS REPRESENTATIVE.

NO DEVIATION IN THESE PLANS SHALL BE MADE WITHOUT APPROVAL OF THE
 COUNTY ENGINEER.

APPROVAL OF THIS PLAN BY THE COUNTY OF LOS ANGELES DOES
 NOT CONSTITUTE A REPRESENTATION AS TO THE ACCURACY OF
 OR THE EXISTENCE OR NON-EXISTENCE OF ANY UNDERGROUND UTILITY
 PIPE OR STRUCTURE WITHIN THE LIMITS OF THIS PROJECT.
 PROVIDE STAKES ON THE PROPERTY LINES OR PROPERTY LINES
 PRODUCED AT RIGHT ANGLES TO THE SEWER LINE AT THE CENTER
 LINE OF EACH MANHOLE.

FOR LEGEND SEE PLAN NO. 5-0-64

PROFILE ALIGNMENT & GRADE OF
SANITARY SEWERS
 TO BE CONSTRUCTED IN
**SEPULVEDA BLVD., LINCOLN ST.,
 PACIFIC ST. & REALTY ST.**

BETWEEN BANNING BLVD. & WILMINGTON AVE.
BONITA ST.
 BETWEEN REALTY ST. & PACIFIC ST.
 IN TRACT NO. 5766
 PRIVATE CONTRACT NO. 41529
 SCALE: HORIZ. 1" = 40'
 VERT. 1" = 4'
 EVERETT A. PHILLIPS
 COUNTY ENGINEER

W.S. NO. 78 October 1950
 SHEET 1 OF 3 SHEETS

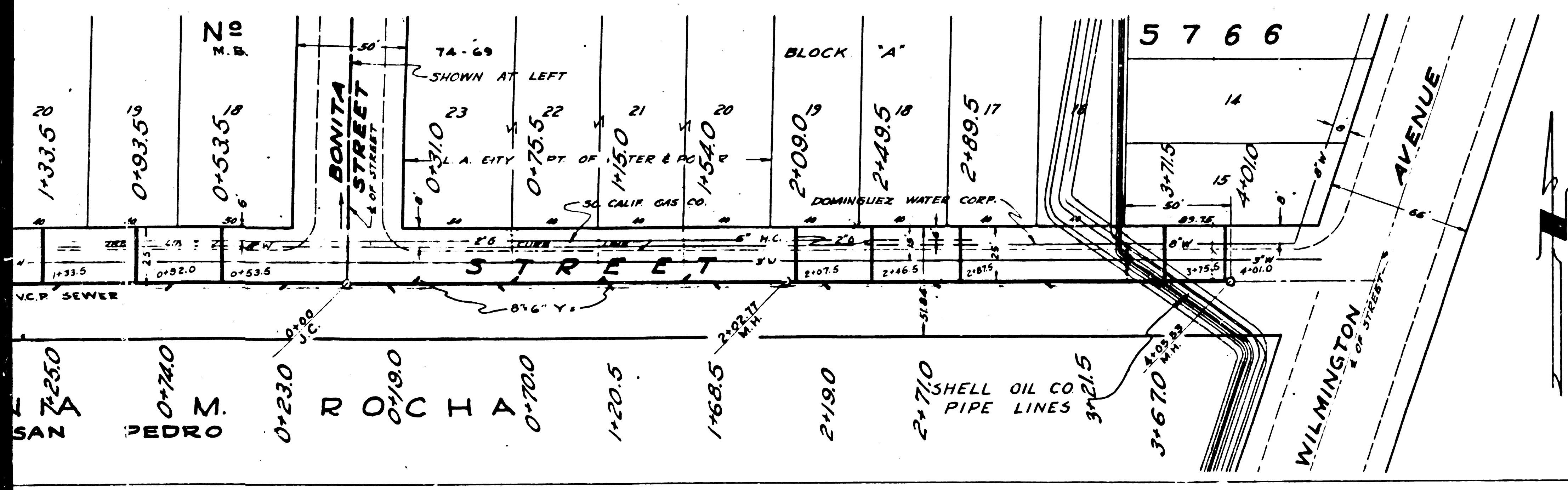
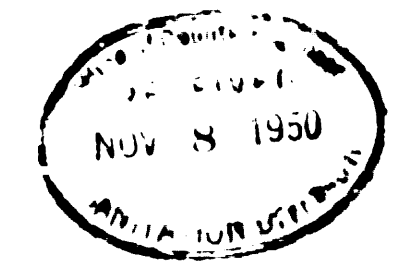
NOTES:
 GRADE POINTS FOR TOP OF CURB, CENTER LINE OF ST. OR CENTER LINE OF
 ALLEY ARE SHOWN BY CIRCLES ON PROFILES.
 GRADES TO WHICH THIS IMPROVEMENT IS TO BE CONSTRUCTED ARE SHOWN ON PLANS & PROFILES.
 AT ALL POINTS BETWEEN DESIGNATED POINTS THE GRADE SHALL BE ESTABLISHED SO AS TO
 CONFORM TO A STRAIGHT LINE DRAWN BETWEEN SAID DESIGNATED POINTS.
 ELEVATIONS ARE IN FEET ABOVE U.S.S. DATUM OR MEAN SEA LEVEL.
 THIS DRAWING AND THE DATA HEREON ARE HEREBY MADE A PART OF THE SPECIFICATIONS.
 WORK SHALL BE CONSTRUCTED ACCORDING TO SPECIFICATIONS ON FILE IN THE OFFICE OF
 THE COUNTY ENGINEER AND SHALL BE PROSECUTED ONLY IN THE PRESENCE OF THE COUNTY
 ENGINEER.
 BEFORE WORK CAN BE STARTED THE CONTRACTOR MUST OBTAIN A PERMIT TO EXCAVATE
 IN COUNTY STREETS FROM THE L.A. COUNTY ROAD DEPT. AND MAKE
 A DEPOSIT WITH THE COUNTY ENGINEER, 828 L.A. CO. ENGR. BLDG., SUFFICIENT TO
 COVER THE COST OF CONSTRUCTION INSPECTION AND RECORD PLANS.
 IF WORK IS TO BE DONE IN A STATE HIGHWAY, A PERMIT MUST BE OBTAINED FROM THE
 STATE OF CALIFORNIA, DIVISION OF HIGHWAYS, 120 S. SPRING ST., AFTER MAKING THE
 DEPOSIT WITH THE COUNTY ENGINEER.

COUNTY OF LOS ANGELES, CALIFORNIA.

APPROVED: *Everett A. Phillips*
 CHIEF SANITARY COUNTY ENGINEER

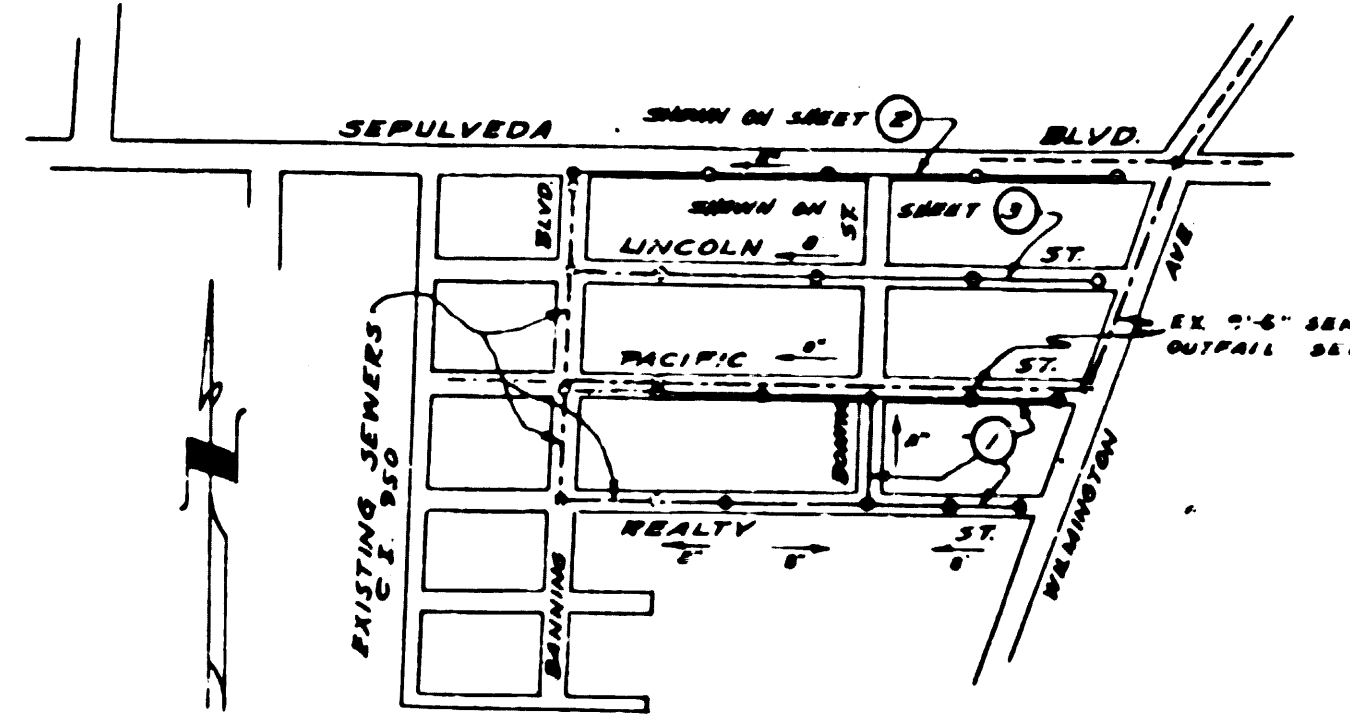
APPROVED: *Allen Kelly*
 CHIEF ENGINEER COUNTY
 SANITATION DISTRICT NO. 8

CHECKED BY: *J. Rothen* 10/18/1950
 OFFICE OF COUNTY ENGINEER, 828 C.E. NO. 209

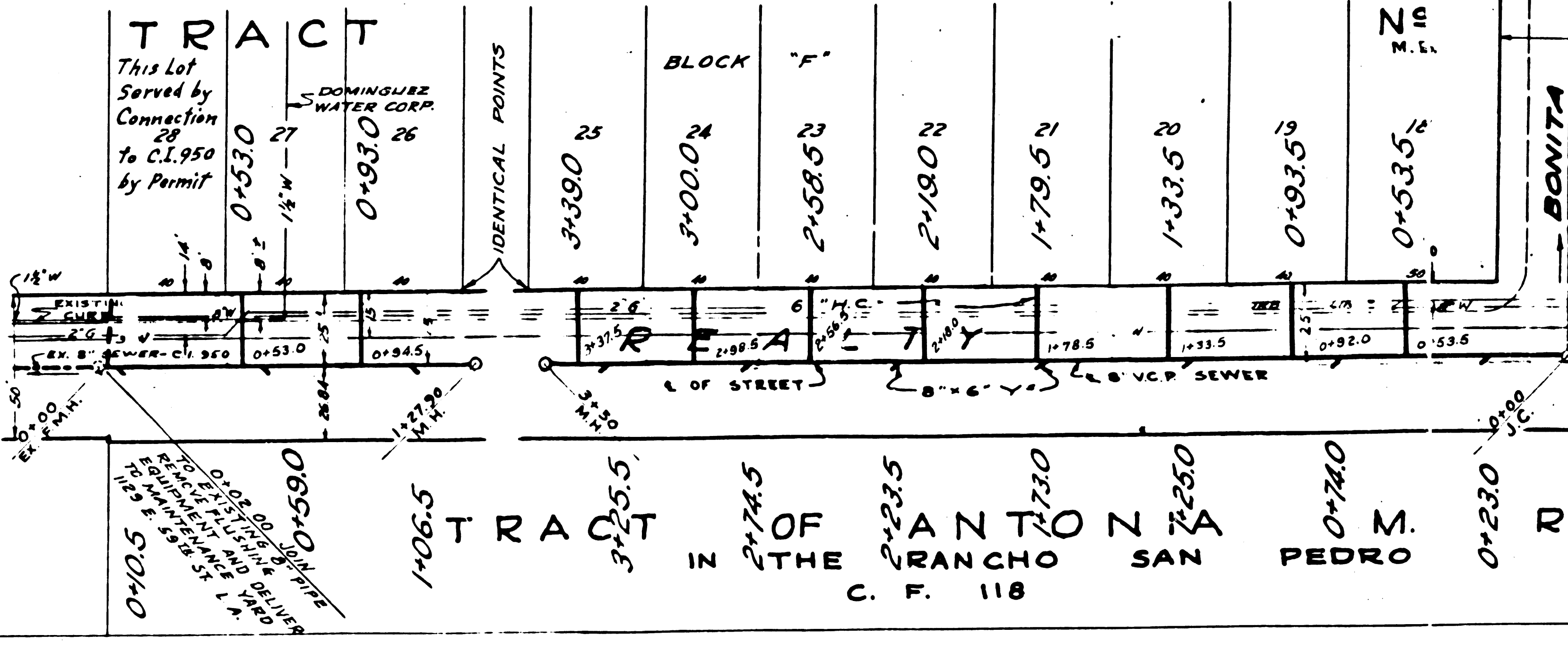
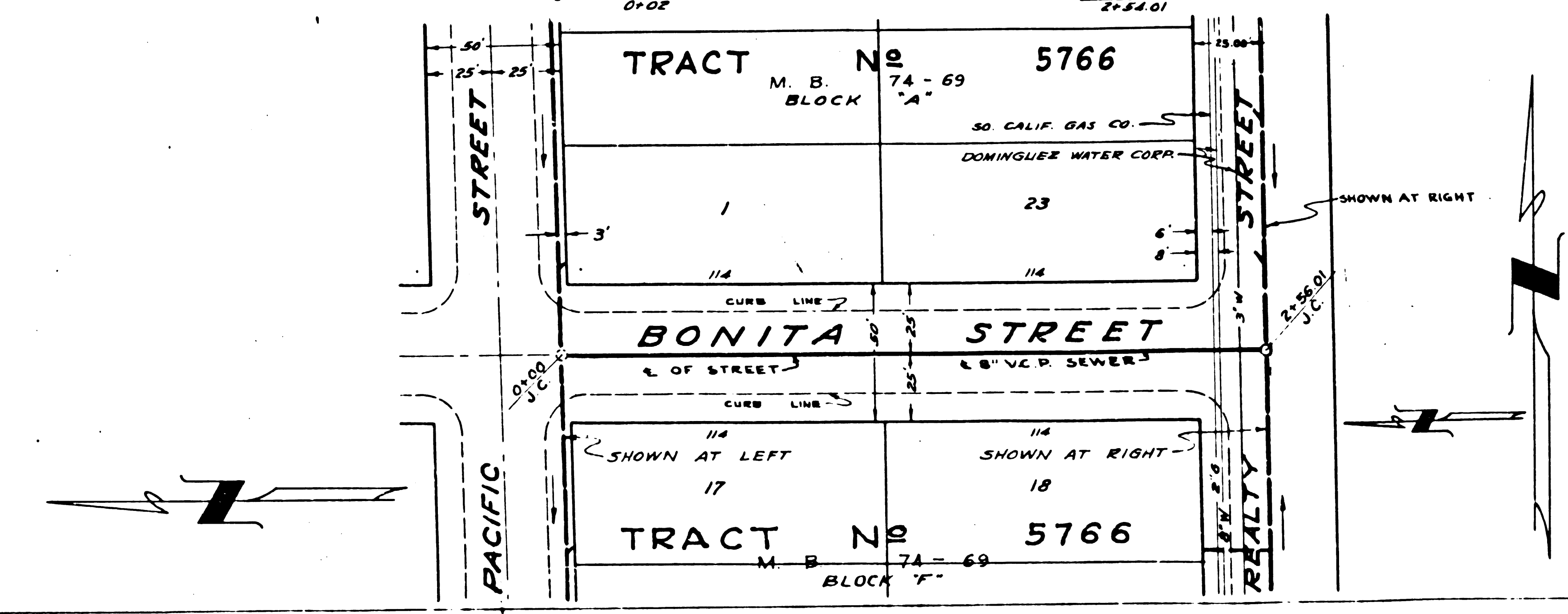
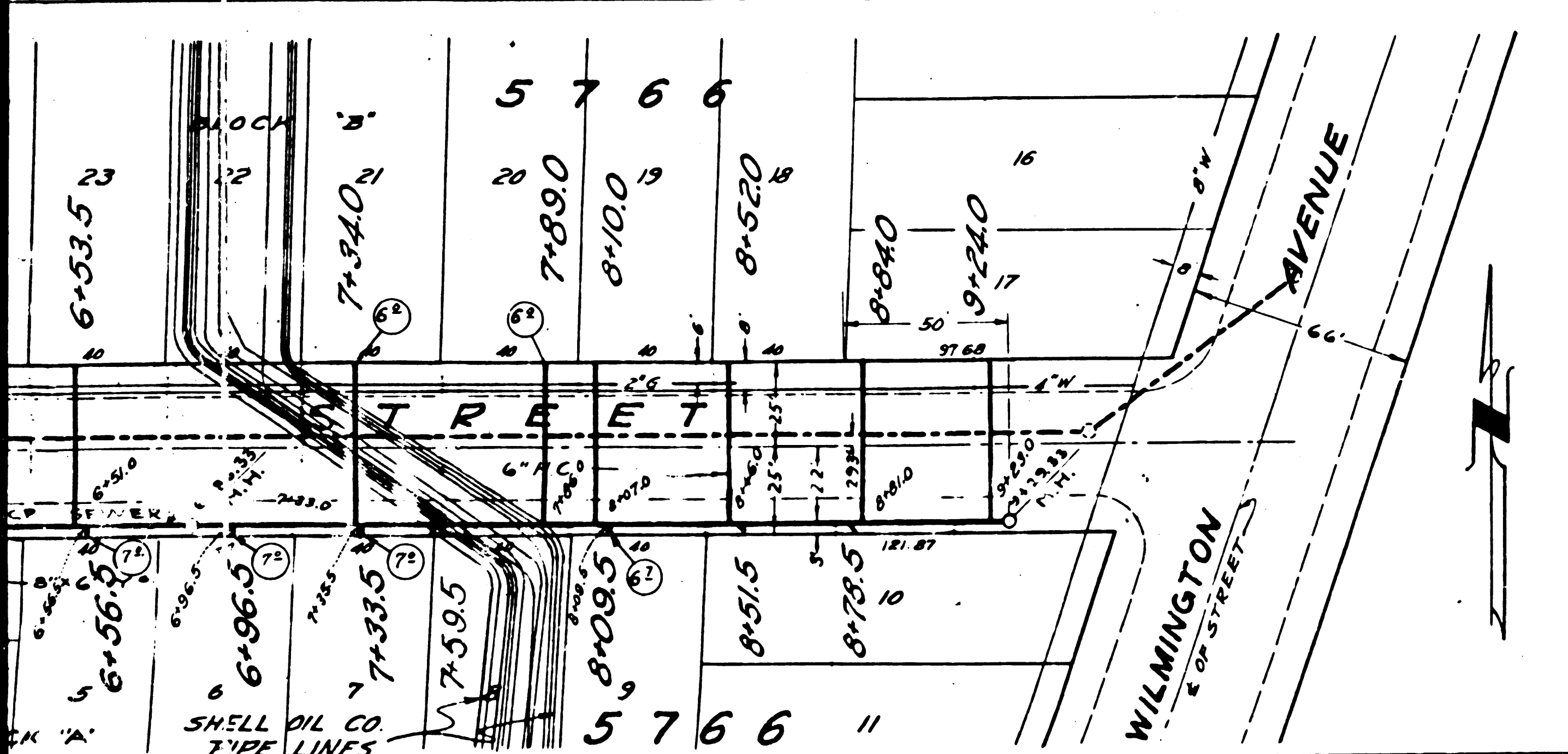
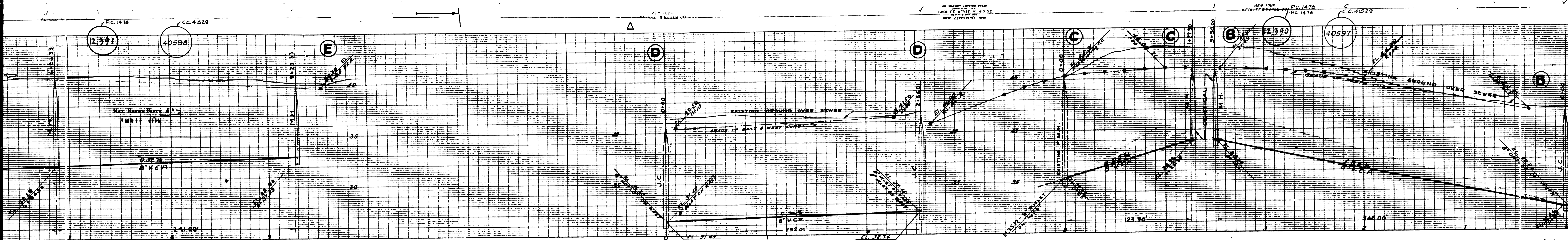


DECEMBER 1968
RECONSTRUCTION
 CASH CONTRACT 41529

RECORD PLANS	J. KIZLAITIS
CHECKED BY	L. CURTIS
INSPECTORS COPY REC'D	DEC. 5, 1968



KEY MAP
 PC 1478 JN 3570
 TRACT NO. 5766



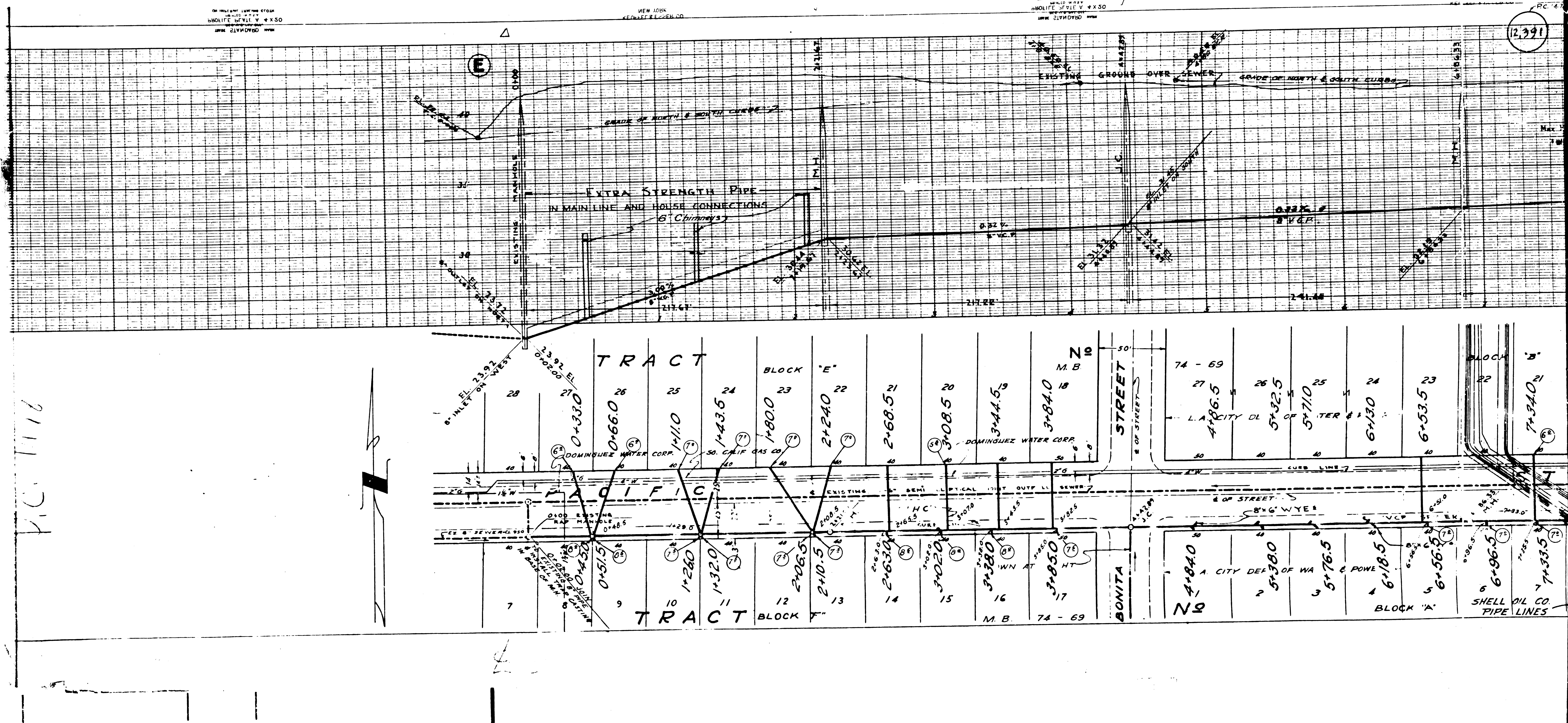
EO

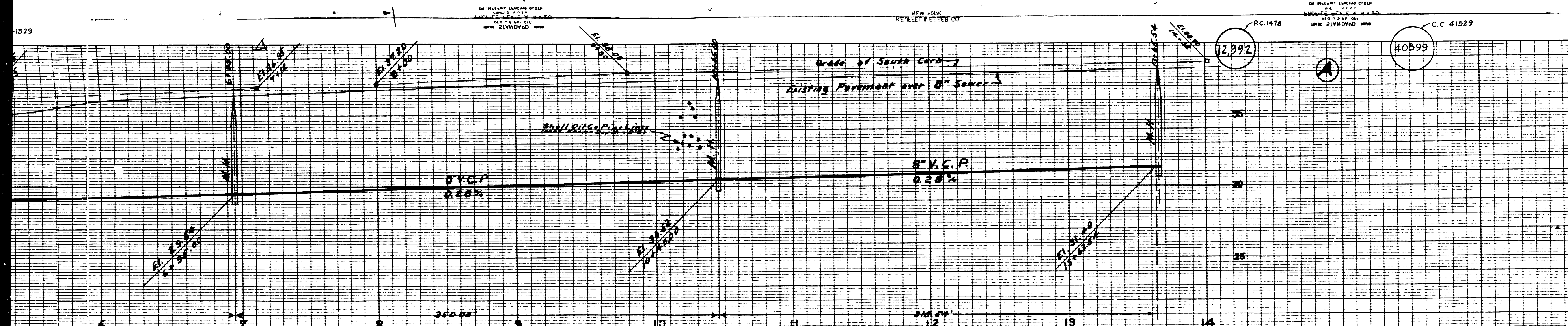
NEW YORK
ENGINEERS

NEW YORK
ENGINEERS

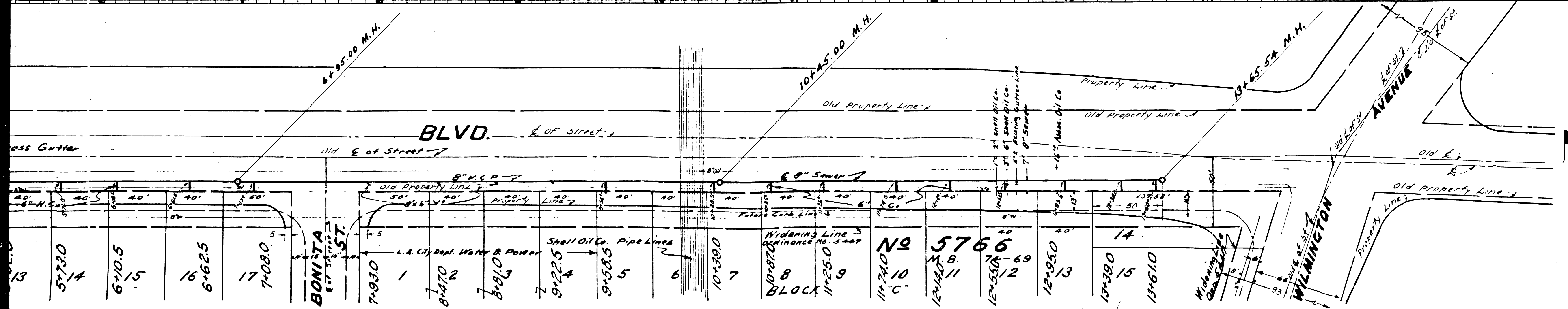
NEW YORK
ENGINEERS

12,991

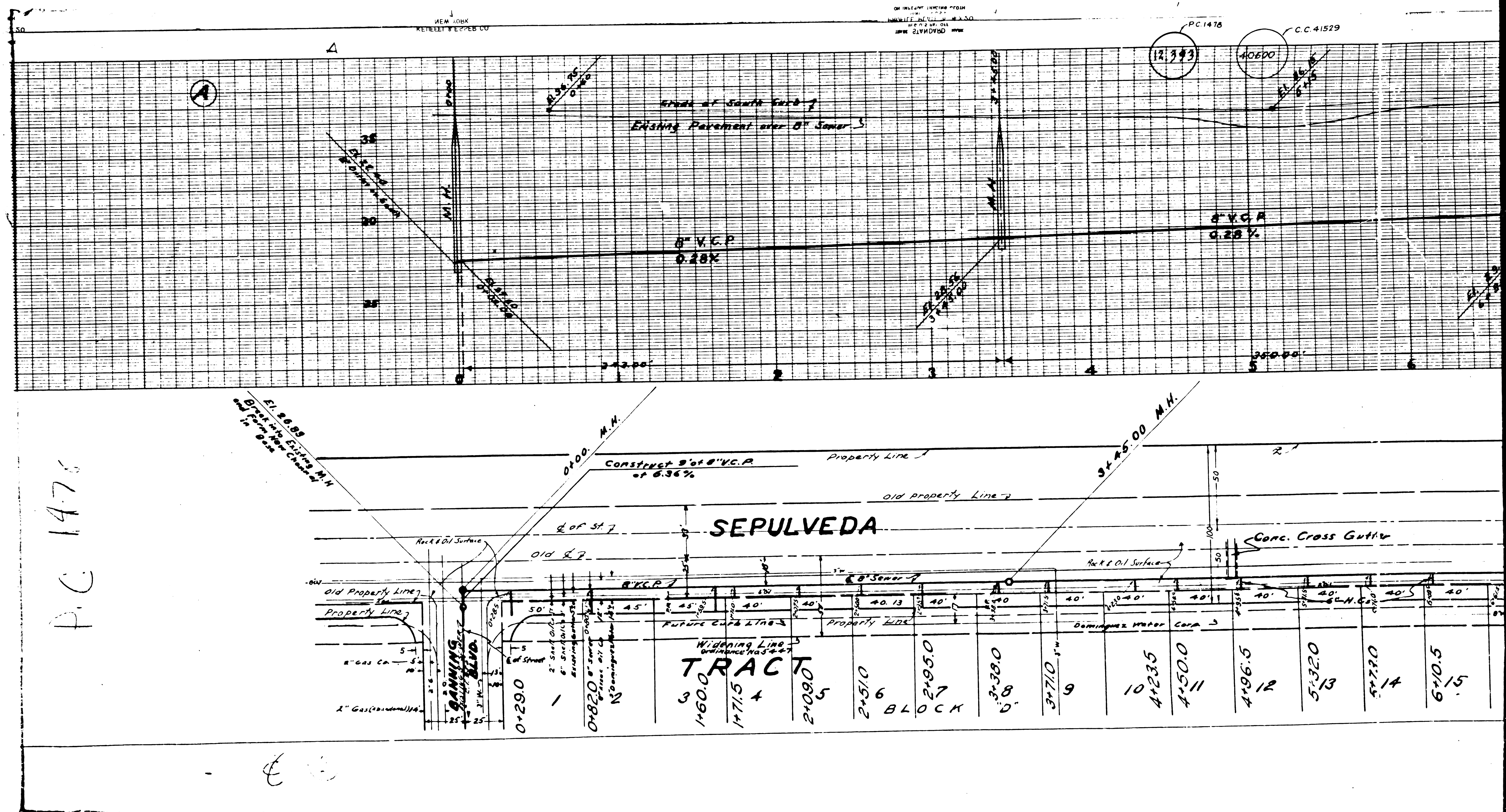




PROFILE ALIGNMENT & GRADE OF
SANITARY SEWERS
 TO BE CONSTRUCTED IN
**SEPULVEDA BLVD, LINCOLN ST,
 PACIFIC ST & REALTY ST.**
 BETWEEN BANNING BLVD (WILMINGTON AVE)
BONITA ST
 BETWEEN REALTY ST & PACIFIC ST.
 IN TRACT NO. 5766
PRIVATE CONTRACT No. 1478
 W.S. 28 OCTOBER 1950
SHEET 2 OF 3 SHEETS
 EVERETT A. PHILLIPS
Everett A. Phillips



FOR LEGEND
 SEE PLAN NO. 5-8-66
 COUNTY OF LOS ANGELES, CALIFORNIA
 APPROVED: *A. H. Gregory*
 CHIEF DEPUTY COUNTY ENGINEER
 APPROVED: *A. W. K. ...*
 CHIEF ENGINEER COUNTY
 SANITATION DISTRICT NO. 8
 CHECKED BY *James T. Roston* 10/20/1950
 OFFICE OF COUNTY ENGINEER, REG. CE NO. 1163



P.C. 1476

SEPULVEDA

TRACT

360.0	1715	2090	21510	21950	3130	3710	41235	41500	4196.5	51320	51720	610.5
1	4	5	6	7	8	9	10	11	12	13	14	15

BLOCK

ON PLANS, UNLESS OTHERWISE SPECIFIED, ALL DIMENSIONS SHALL BE IN FEET AND INCHES. DIMENSIONS SHALL BE TO THE CENTER OF THE LINE UNLESS OTHERWISE SPECIFIED.

NEW YORK
KENNEL & BROWN CO.

ON PLANS, UNLESS OTHERWISE SPECIFIED, ALL DIMENSIONS SHALL BE IN FEET AND INCHES. DIMENSIONS SHALL BE TO THE CENTER OF THE LINE UNLESS OTHERWISE SPECIFIED.

C.C. 41529

ON PLANS, UNLESS OTHERWISE SPECIFIED, ALL DIMENSIONS SHALL BE IN FEET AND INCHES. DIMENSIONS SHALL BE TO THE CENTER OF THE LINE UNLESS OTHERWISE SPECIFIED.

3

PROFILE ALIGNMENT & GRADE OF
SANITARY SEWERS
TO BE CONSTRUCTED IN
**SEPULVEDA BLVD, LINCOLN ST,
PACIFIC ST. & REALTY ST.**
BETWEEN BANNING BLVD & WILMINGTON AVE.

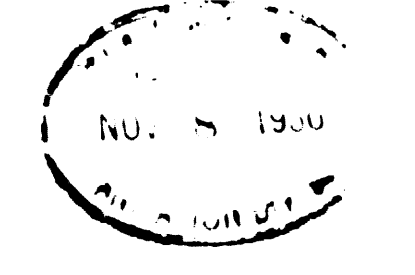
BONITA ST.
BETWEEN REALTY ST & PACIFIC ST.
IN TRACT NO. 5766

PRIVATE CONTRACT No. 1478
W.S. 28 OCTOBER 1950
SHEET 3 OF 3 SHEETS

EVERETT A. PHILLIPS
Everett A. Phillips

SCALE: VERT. 1" = 4'
HORIZ. 1" = 40'

FOR LEGEND
SEE PLAN NO. S-2-64



COUNTY OF LOS ANGELES, CALIFORNIA

APPROVED: *Phillips*
CHIEF COUNTY ENGINEER

APPROVED: *Allen*
CHIEF ENGINEER, COUNTY
SANITATION DISTRICT NO. 6

CHECKED BY *James T. Roston* 10/20/1950
OFFICE OF COUNTY ENGINEER, REG. NO. 2123

Trim Line

SHEET 3 OF 3 SHEETS

