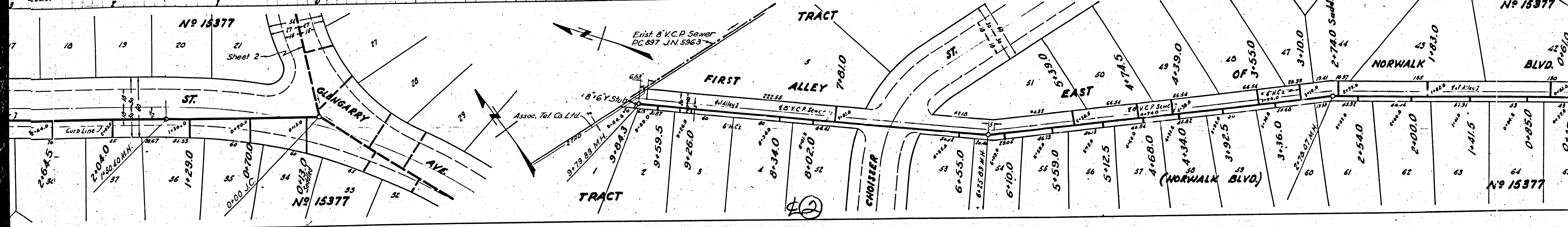
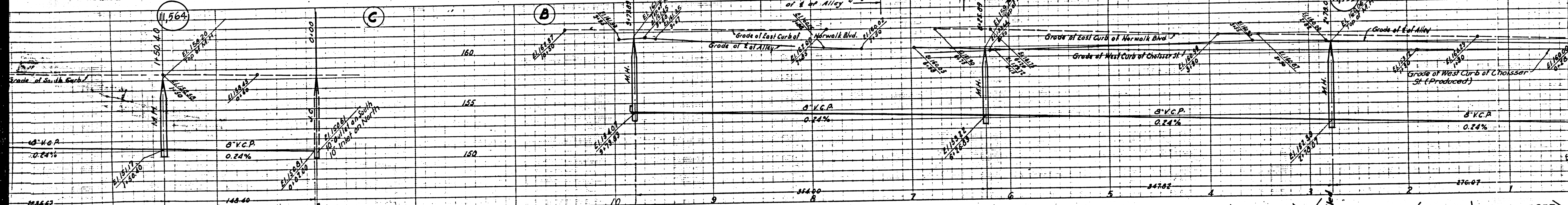
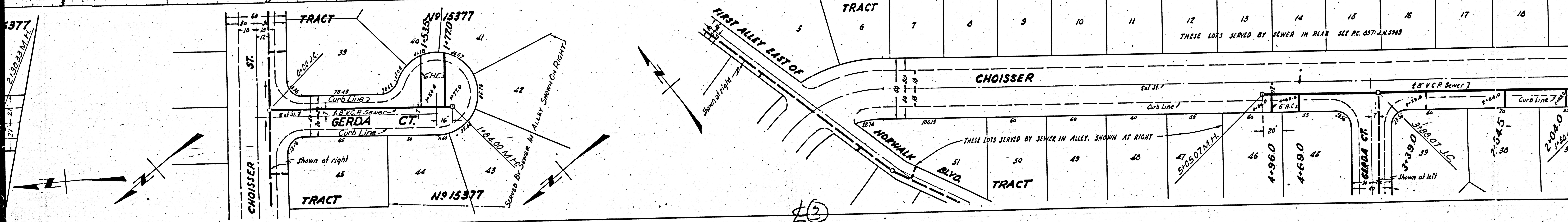
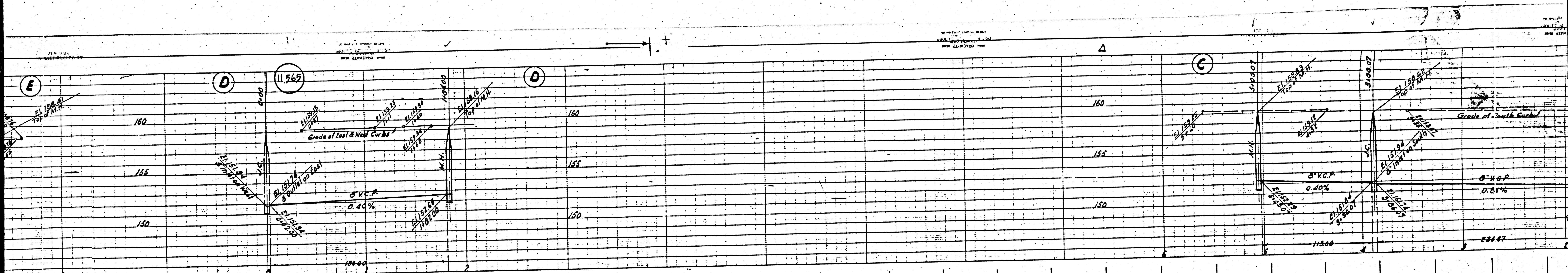
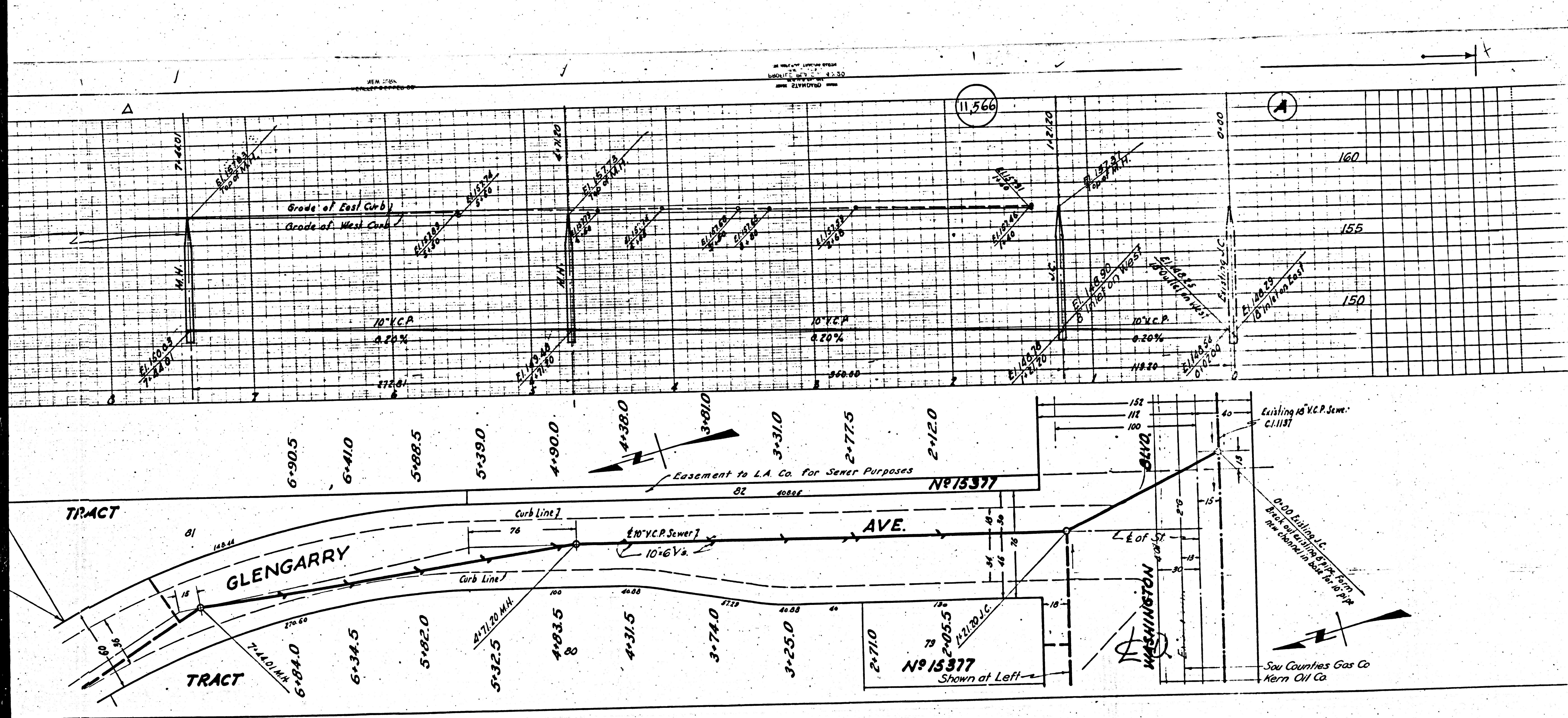


Construct H.C.s. extending Westerly 5 ft. Below Grade of E of Alley
 Construct H.C.s. extending Easterly 5 ft. Below Grade of West Curb of Chaisser St.







PROFILE ALIGNMENT AND GRADE OF
SANITARY SEWERS
 TO BE CONSTRUCTED IN
GLENGARRY AVENUE
 BETWEEN WASHINGTON BLVD & NORTH LINE OF TRACT NO 15377
WASHINGTON BLVD
 BETWEEN GLENGARRY AVE & FIRST ALLEY NORTH OF WASHINGTON BLVD.

PRIVATE CONTRACT No. 1481
 W. 537
SHEET 2 OF 2 SHEETS

SCALE: HORIZ. 1" = 40'
 VERT. 1" = 4'
 PREPARED IN THE OFFICES OF
SEABOARD ENGINEERING CO.
 BY: *Mark A. Roben*
 S.E.C.E. No. 2059

FOR CONSTRUCTION NOTES
 SEE SHEET 1

COUNTY OF LOS ANGELES, CALIFORNIA

APPROVED: *Edmund*
 COUNTY ENGINEER

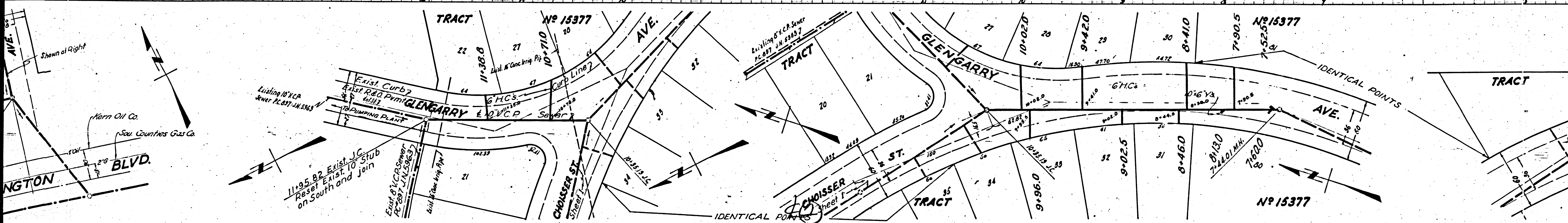
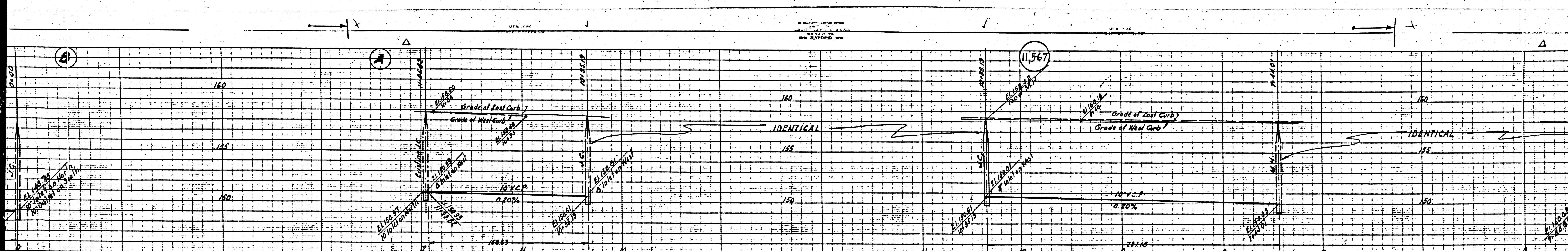
APPROVED: *Carl*
 SANITATION DISTRICT NO. 18

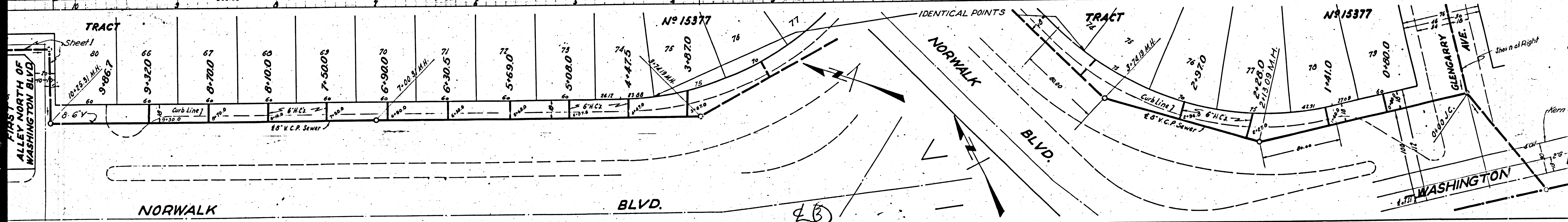
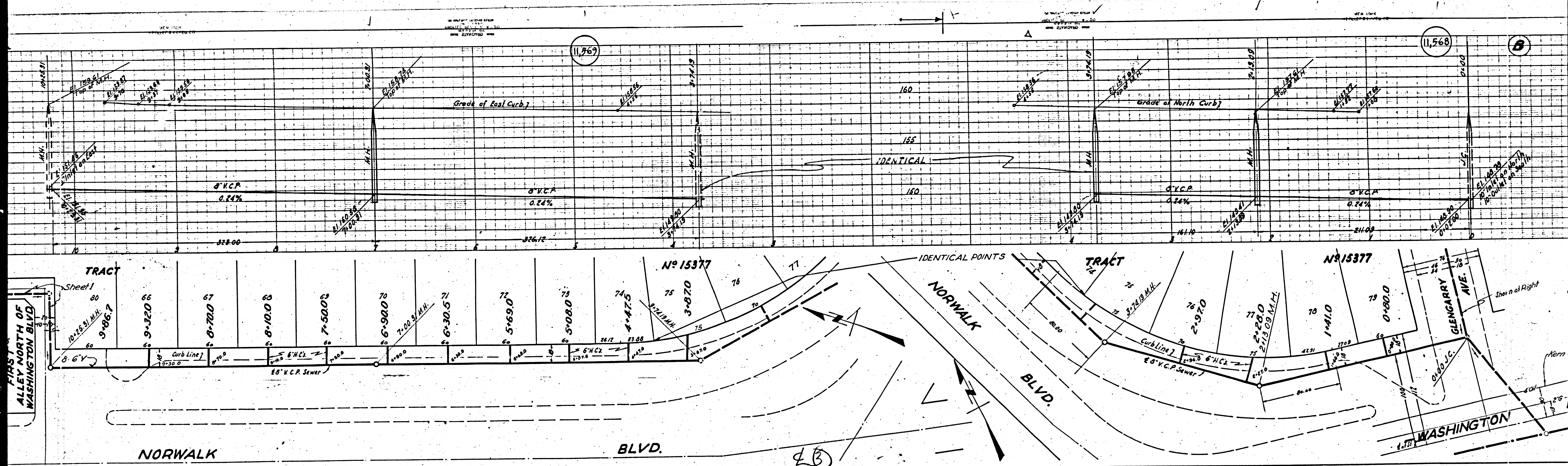
CHECKED: *H. L. Sanchez* 1-18-50
 OFFICE OF COUNTY ENGINEER, R. E. C. 6412

checked 11-8-50 *H. L. Sanchez*

184109

5/2
 5/3
 1/0
 1/0
 1/0
 1/0
 1/0





FIRST ALLEY NORTH OF WASHINGTON BLVD

TRACT

TRACT

TRACT

NORWALK

BLVD.

NORWALK BLVD.

WASHINGTON

GLENGARY AVE.

No 15377

No 15377

11,769

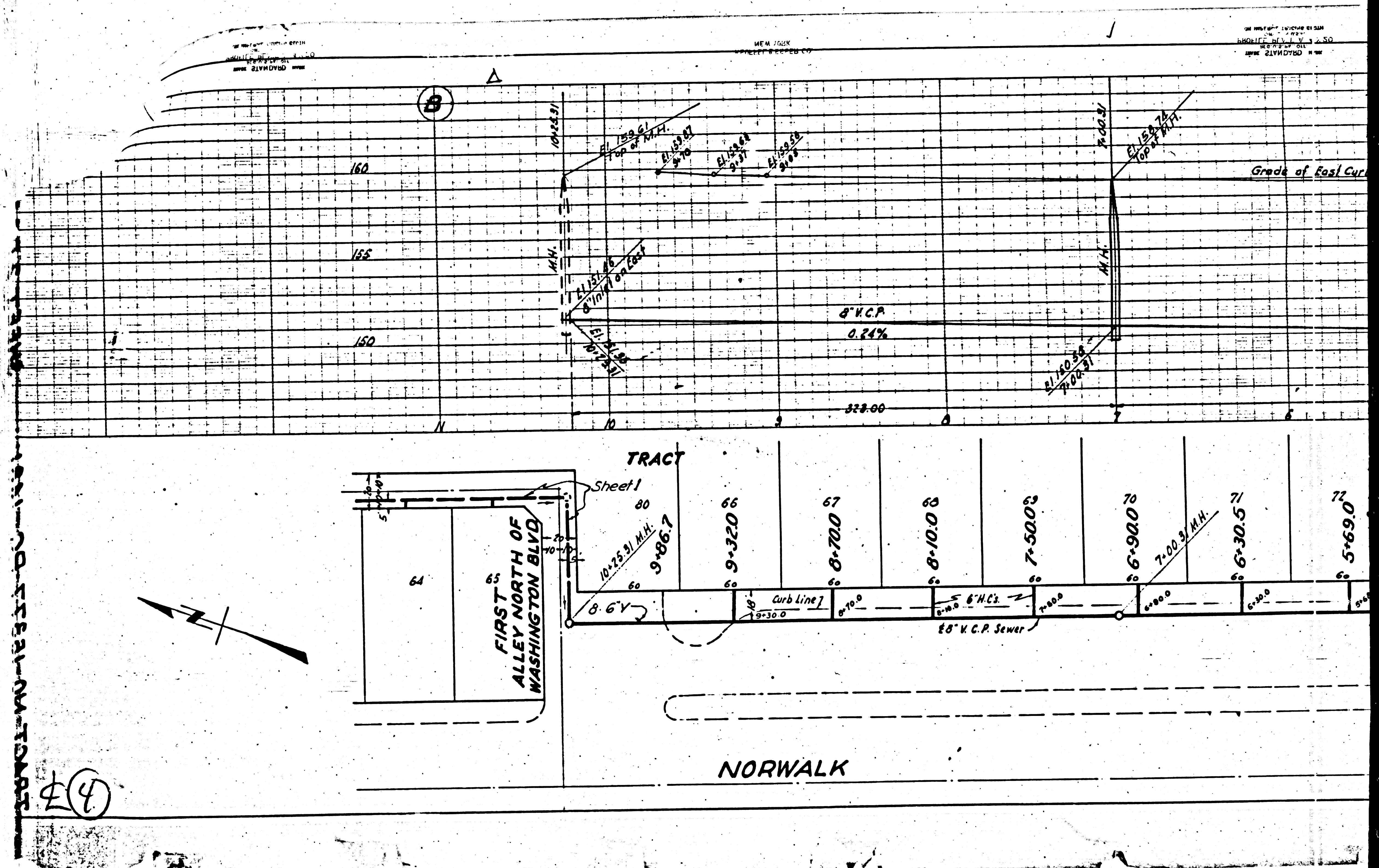
11,568

(B)

(B)

M

M



④