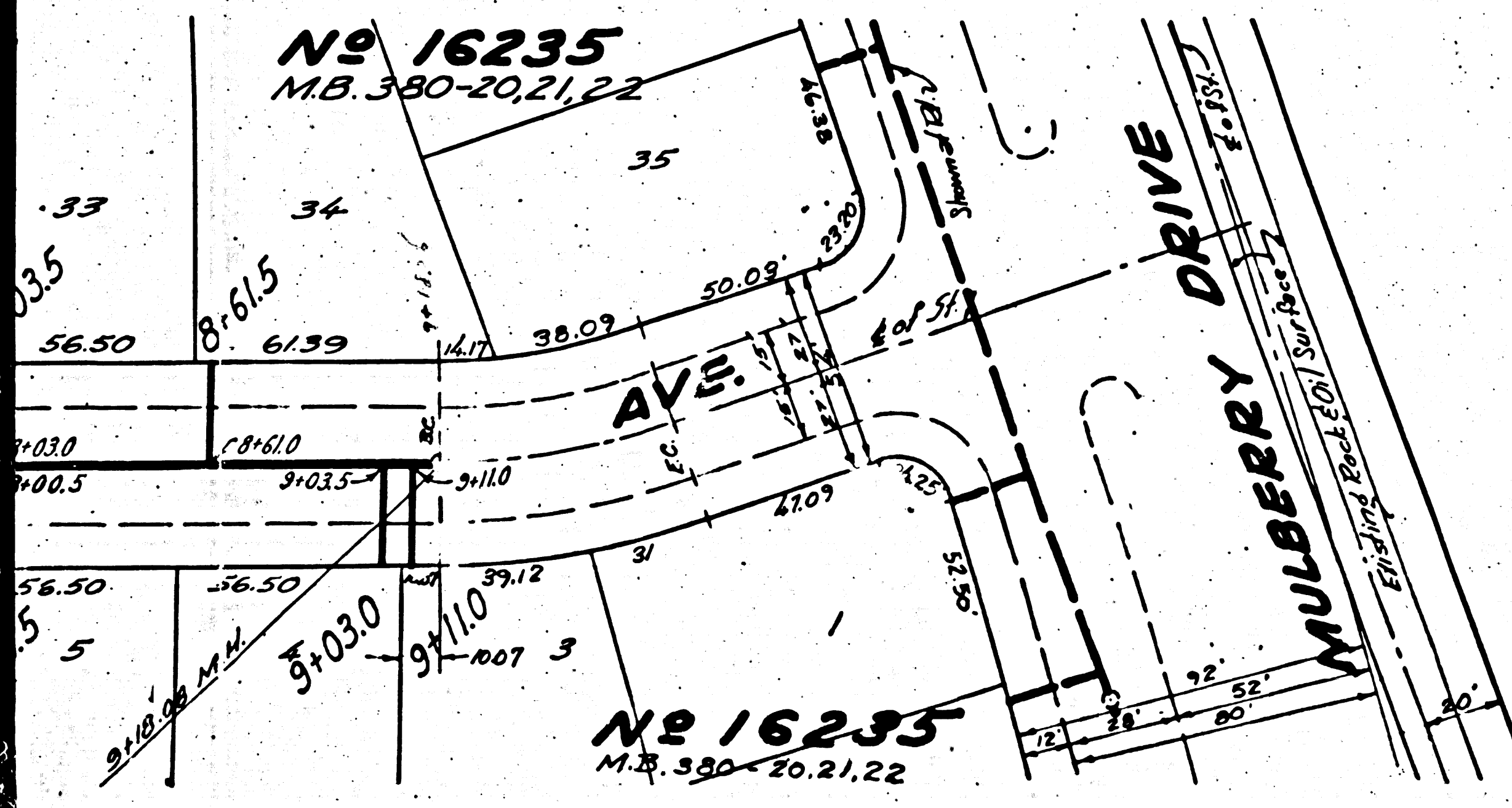


R.M. No. 271 Y.B. SY. B.M. P. 26. Brass Cap in wall and Culvert Headwall B.H. South of U.P.R.R. R/W. 17 N. & West of Mills Ave. B.M. Elev. 149.445

Note: Approval of this plan by the County of Los Angeles does not constitute a representation as to the accuracy of the location of, or the existence or non-existence of, any underground utility pipes or structures within the limits of this project. (This note applies to all sheets.)



REVISED PLAN 10/12/50
Revised outlet on Gunn Ave. 5th 2, 3rd A-A
Revised location of Sewer Line, 3rd E, Sec B-B
on Light Street

REVISION CHECKED BY
James T. Reithen 10/13/50
OFFICE OF COUNTY ENGR. REG. C.E. No. 7183

USE STANDARD STRENGTH PIPE EXCEPT AS NOTED
USE CEMENT MORTAR FOR ALL VITRIFIED CLAY PIPE JOINTS
ENLARGE FOUR FEET OF SEWER AT POINTS OF INTERFERENCE WITH POLES AS PER S. 4115
DISTRIBUTE UTILITY CONNECTIONS WITH INVERT AS PROPOSED 8 FEET BELOW CURB GRADE EXCEPT AS NOTED
ALL STRUCTURES SHALL BE BRICK SEWER STRUCTURES AS PER PLAN NO. S-4104
USE STANDARD MANHOLE FRAMES AND COVERS AS PER PLAN NO. S-4117
CONSTRUCT TOP OF ALL STRUCTURES IN RIGHTS OF WAY AT ABOVE FINISHED GRADE
RESURFACE ALL TRENCHES WITHIN PAVED AREA TO MEET LOS ANGELES COUNTY ROAD DEPT. OR STATE HIGHWAY REQUIREMENTS IN ACCORDANCE WITH PERMITS
PROVIDE STAKES TO THE PROPERTY LINES AND PROPERTY LINES PRODUCED AT RIGHT ANGLE TO THE SEWER LINE AT THE CENTER LINE OF EACH MANHOLE
NO REVISIONS SHALL BE MADE IN THESE PLANS WITHOUT APPROVAL OF THE COUNTY ENGINEER
NO REPRESENTATIVE OF THE COUNTY ENGINEER WILL SURVEY OR LAY OUT ANY PORTION OF THE WORK
THE OWNER OR HIS AUTHORIZED REPRESENTATIVE SHALL FURNISH THE COUNTY ENGINEER WITH GRADE SHEETS AND STATIONS OF ALL HOUSE CONNECTIONS AND TRENCHES AND SHALL PROVIDE STAKES FOR THEM AT THEIR PROPER LOCATIONS WITH STATIONING PLAINLY MARKED
ANY CHANGE OF LOCATION SHALL BE REQUESTED IN WRITING BY THE OWNER OR HIS REPRESENTATIVE

PROFILE ALIGNMENT AND GRADE OF
SANITARY SEWERS
TO BE CONSTRUCTED IN
TRACT NO. 16235
MULBERRY DRIVE
BETWEEN GUNN AVE. & SOUTHEAST BOUNDARY OF TR. 16235
AHMANN AVENUE
BETWEEN LIGHT STREET & MULBERRY DRIVE
RUFUS AVENUE
BETWEEN LIGHT STREET & MULBERRY DRIVE
PRIVATE CONTRACT NO. 1484
W. S. 34
SHEET 1 OF 2 SHEETS
SCALE: VERT. 1" = 4'
HORIZ. 1" = 40'

PREPARED IN THE OFFICES OF
KEMMERER ENG. CO.

FOR LEGEND
SEE PLAN NO. 9-8-84

NOTE: GRADES TO WHICH THIS IMPROVEMENT IS TO BE CONSTRUCTED ARE SHOWN ON PLANS AND PROFILES. GRADE POINTS FOR TOP OF CURB, CENTER LINE OF STREET OR CENTER LINE OF ALLEY ARE SHOWN BY CIRCLES ON PROFILES. AT ALL POINTS BETWEEN DESIGNATED POINTS THE GRADE SHALL BE ESTABLISHED SO AS TO CONFORM TO A STRAIGHT LINE DRAWN BETWEEN SAID DESIGNATED POINTS. ELEVATIONS ARE IN FEET ABOVE U. S. S. DATUM OR MEAN SEA LEVEL. THIS DRAWING AND THE DATA HEREON ARE HEREBY MADE A PART OF THE SPECIFICATIONS. THE DRAWING AND SHALL BE PROTECTED ONLY IN THE PRESENCE OF THE COUNTY ENGINEER. COUNTY ENGINEER AND SHALL BE PROTECTED ONLY IN THE PRESENCE OF THE COUNTY ENGINEER. BEFORE WORK CAN BE STARTED, THE CONTRACTOR MUST OBTAIN A PERMIT TO EXCAVATE IN COUNTY STREETS FROM THE L. A. COUNTY ROAD DEPT. IN SO MANY WORDS AND MAKE A DEPOSIT WITH THE COUNTY ENGINEER \$500.00 AS A DEPOSIT TO COVER THE COST OF CONSTRUCTION INSPECTION AND RECORD PLANS. SUFFICIENT TO COVER THE COST OF WORK IS TO BE DONE IN A STATE HIGHWAY, A PERMIT MUST BE OBTAINED FROM THE STATE OF CALIFORNIA, DIVISION OF HIGHWAYS, 808 STATE BUILDING, AFTER MAKING THE DEPOSIT WITH THE COUNTY ENGINEER.

COUNTY OF LOS ANGELES, CALIFORNIA

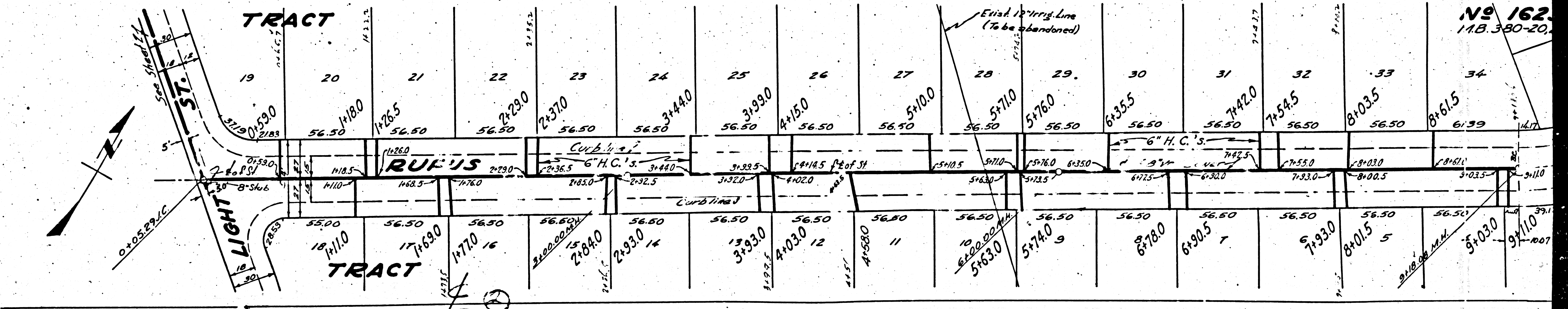
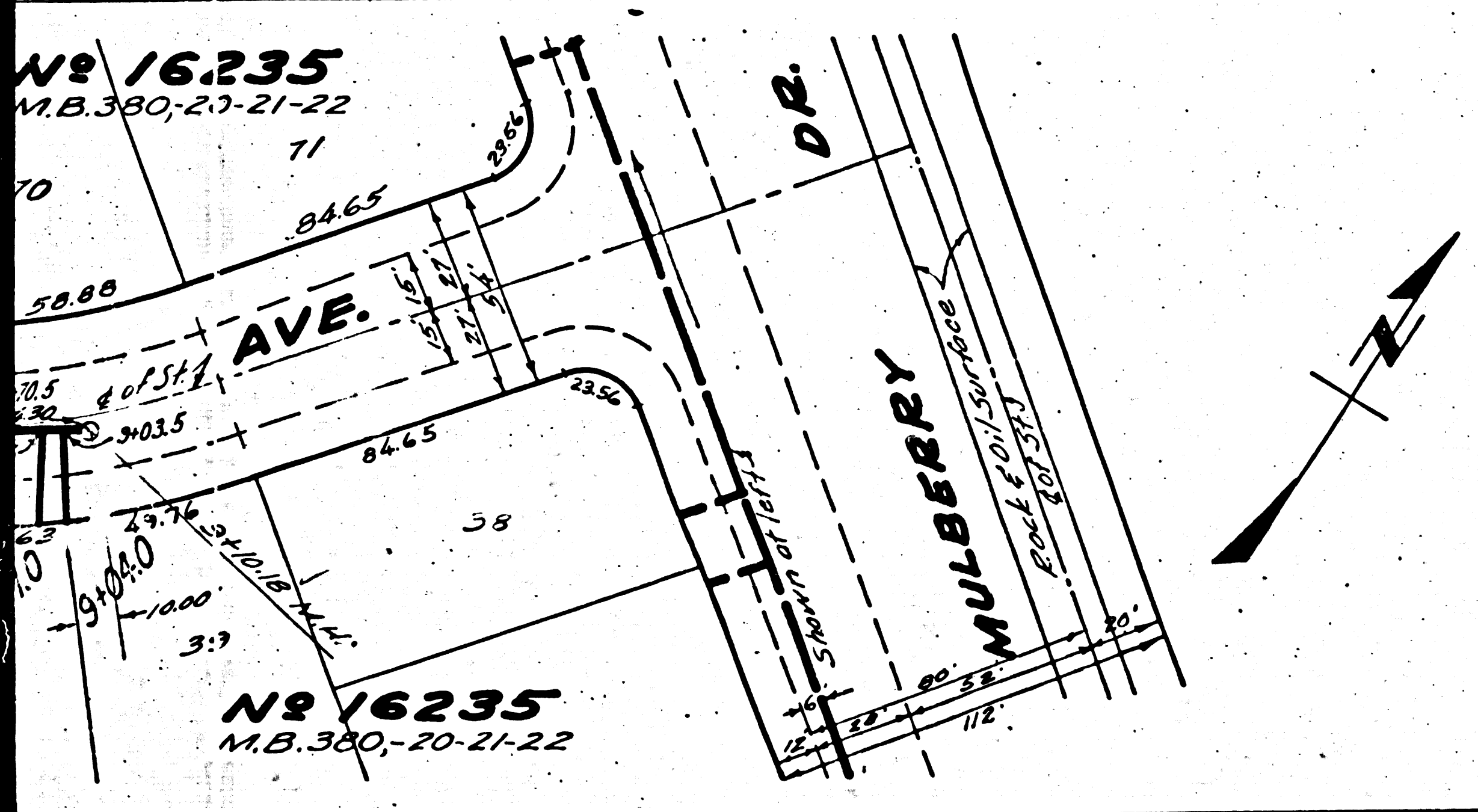
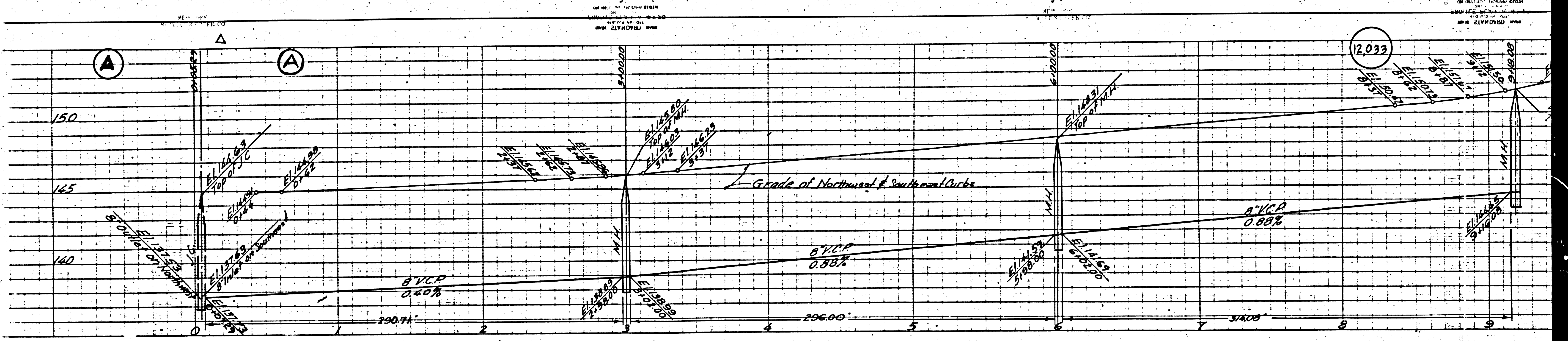
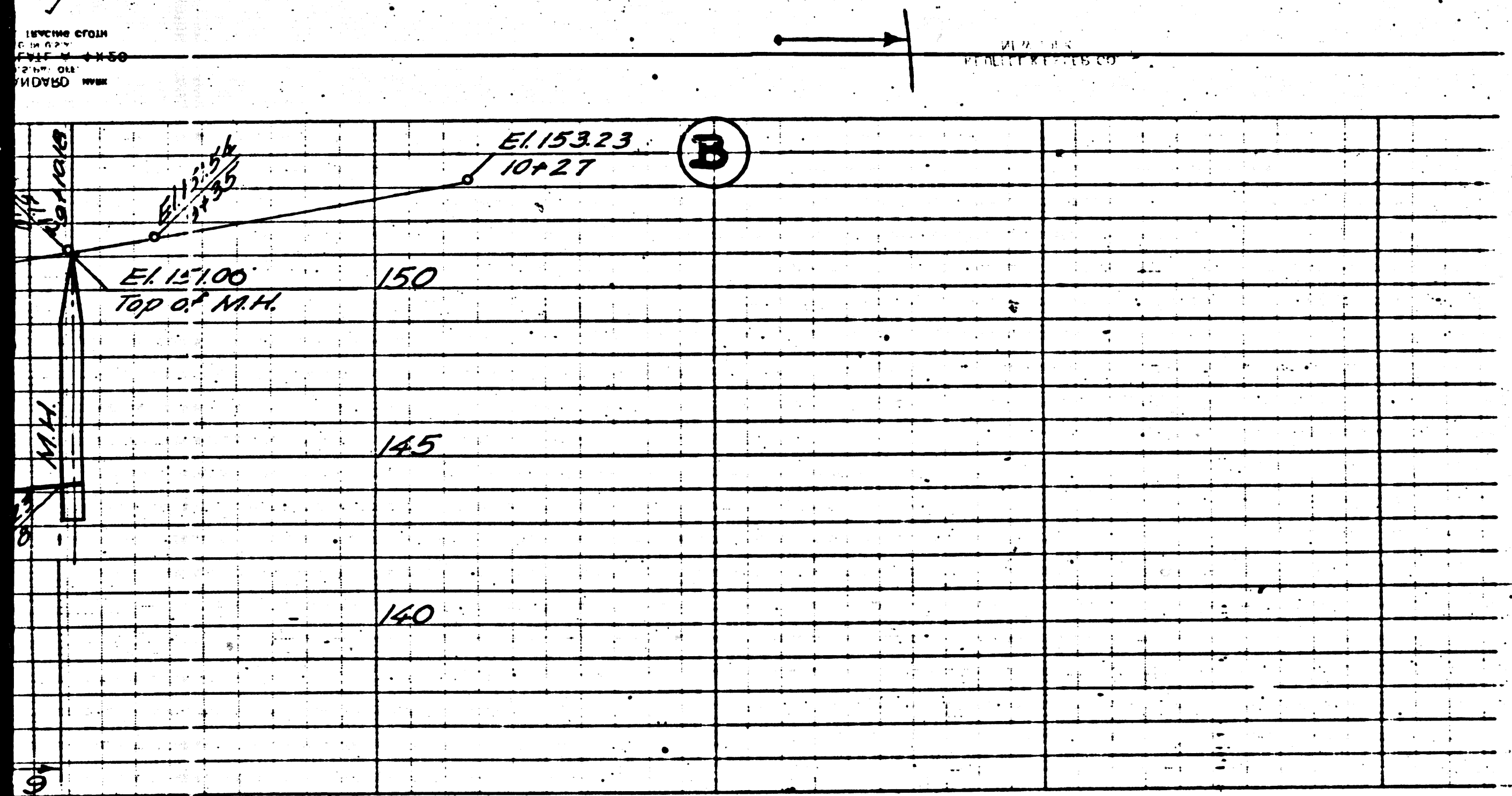
APPROVED *Edmund* COUNTY ENGINEER

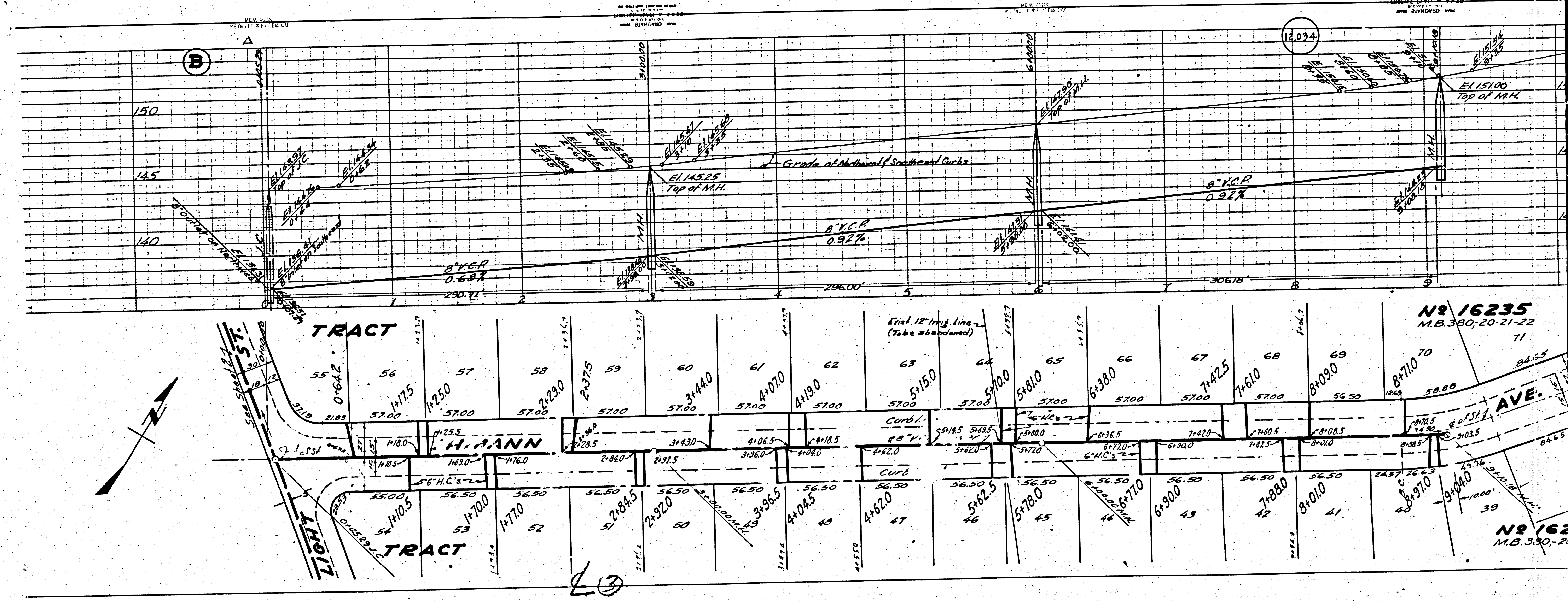
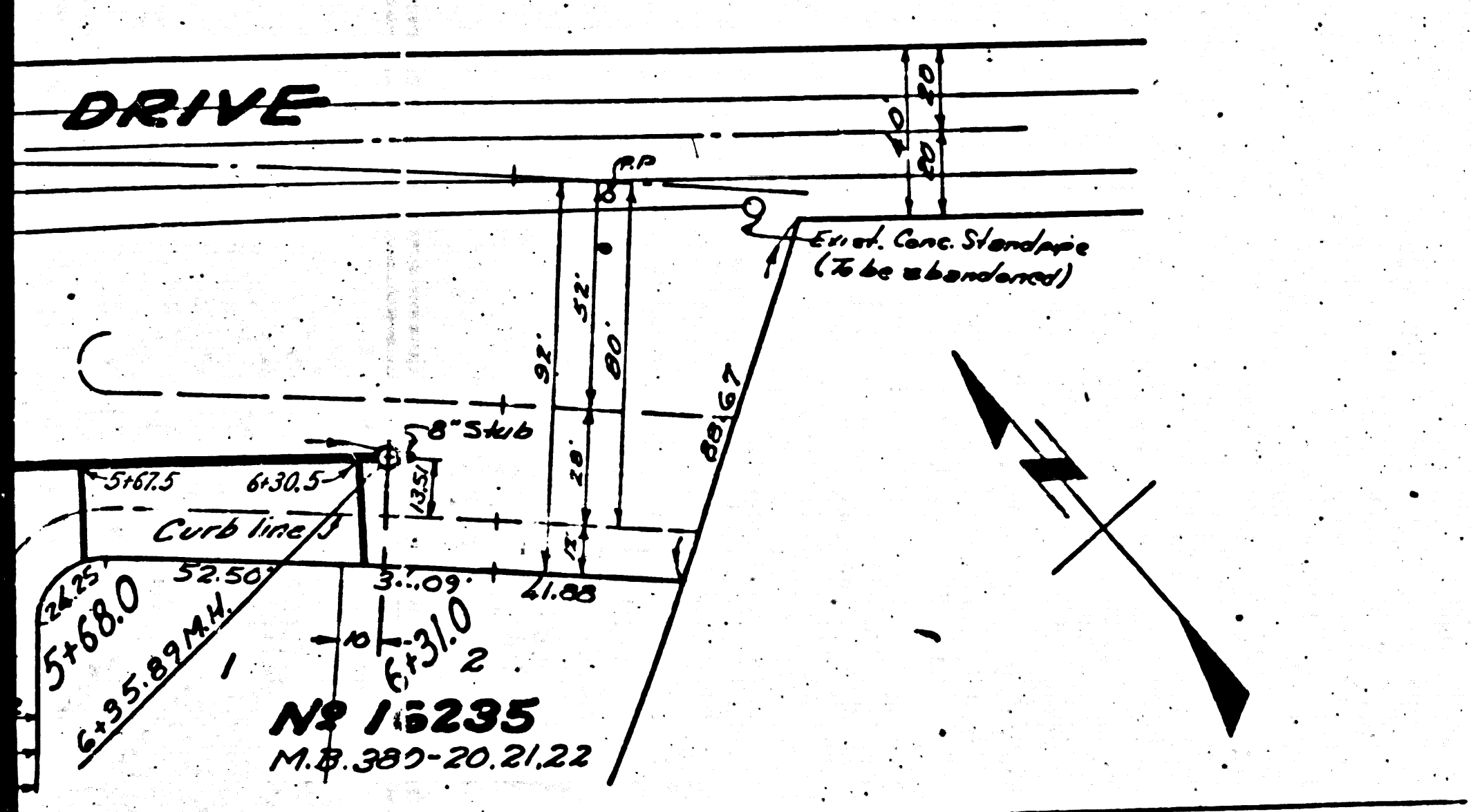
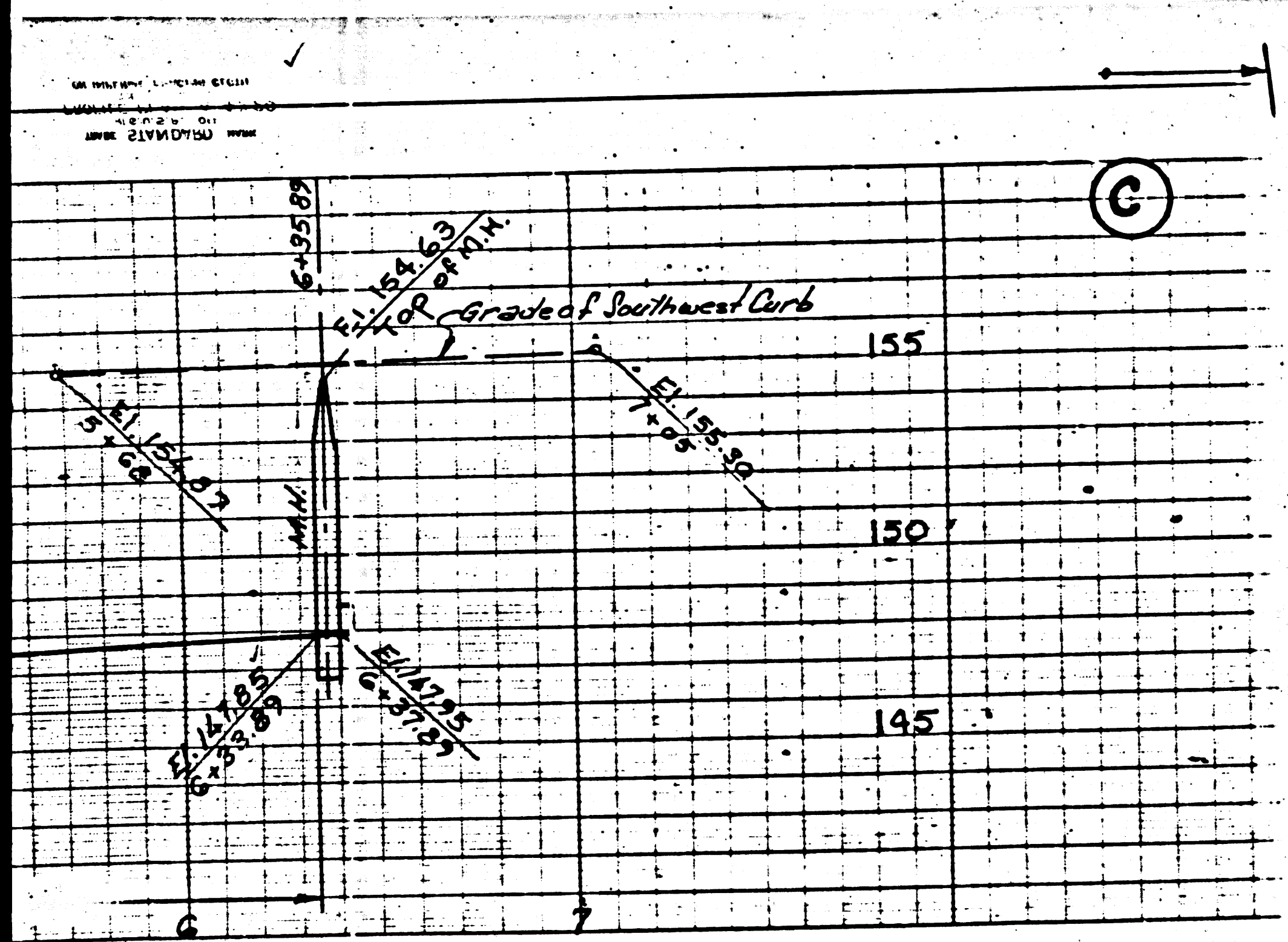
APPROVED *Edmund* COUNTY ENGINEER

CHECKED BY *H. J. Smith* COUNTY ENGINEER

RECEIVED
OCT 20 1950
COUNTY ENGINEER
OFFICE OF COUNTY ENGINEER
SANITATION DISTRICT NO. 18

Revised

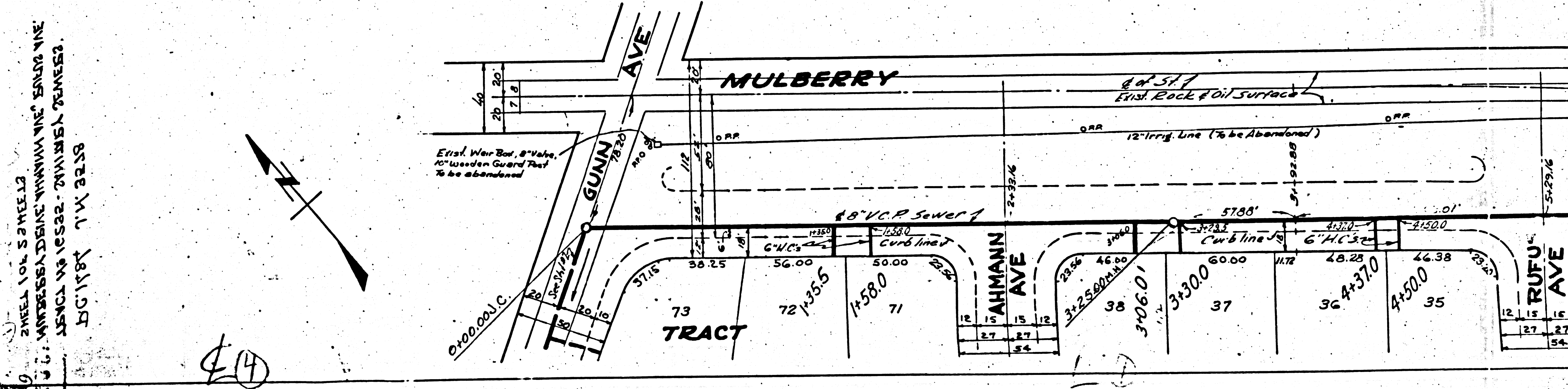
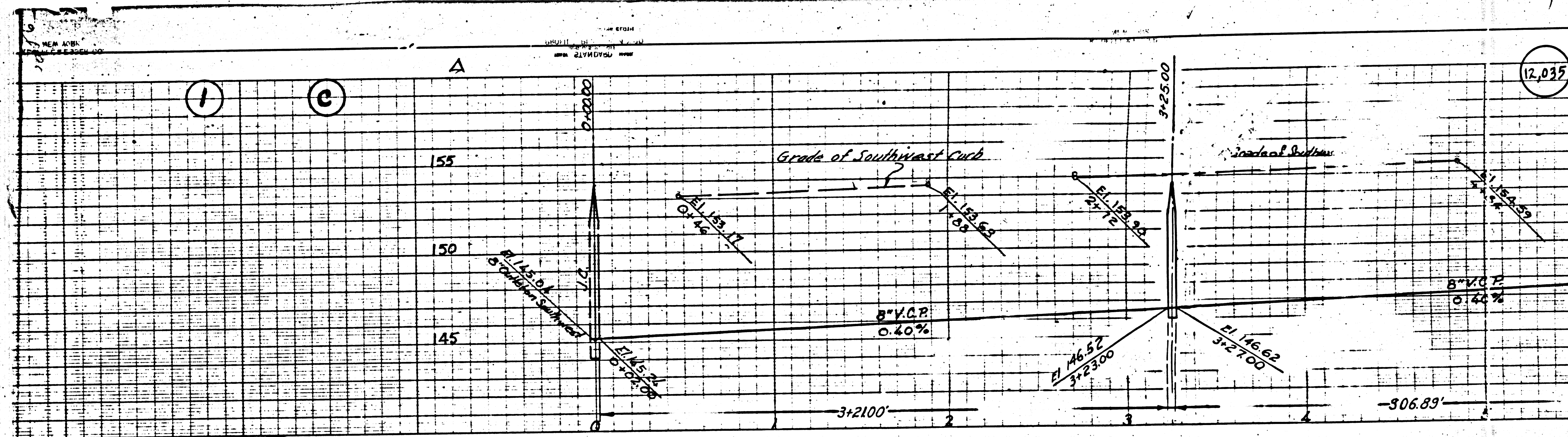




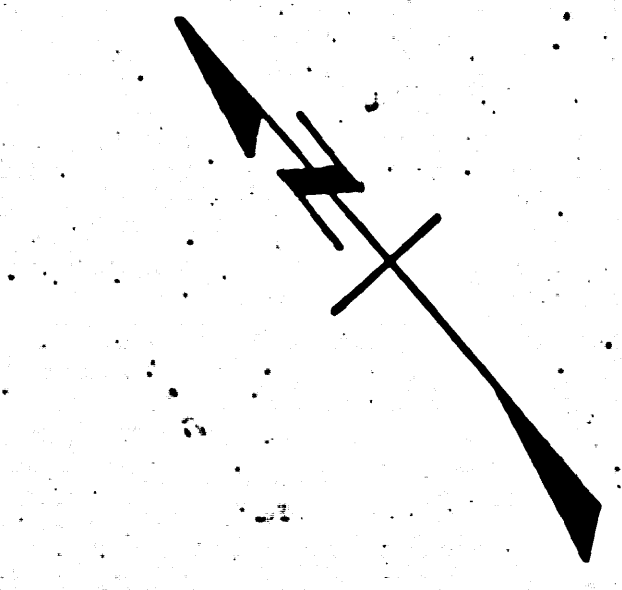
14.094

N^o 16235
M.B. 390-20-21-22
71

N^o 162
M.B. 390-20-21-22

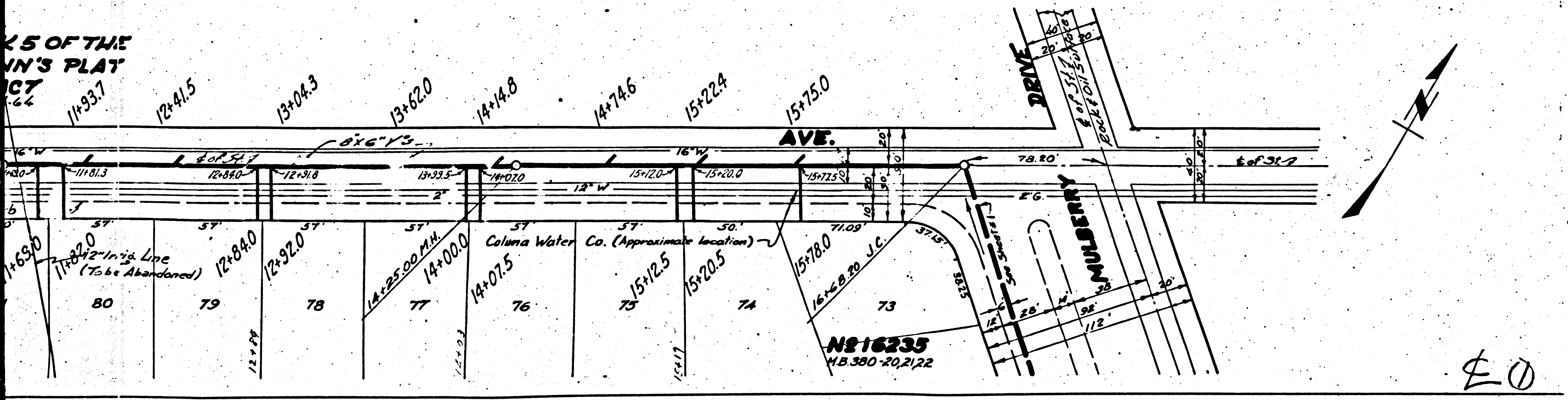
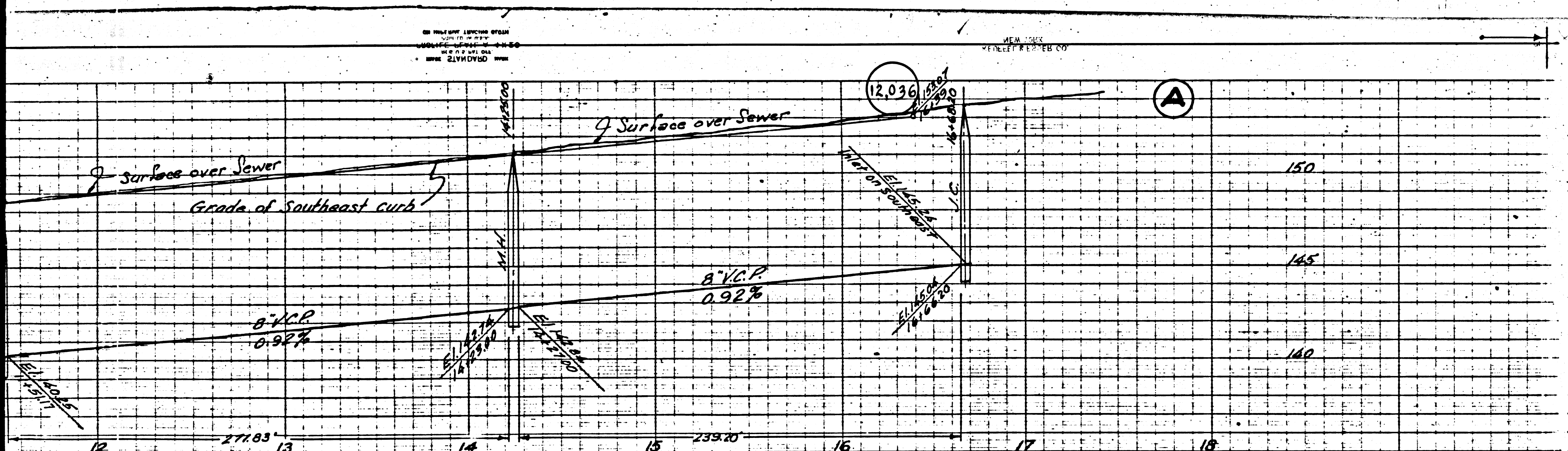


SHEET 104 3 SHEETS
 12. MULBERRY DRIVE THROUGH THE SOUTH SIDE
 185121 185122 185123 185124 185125
 185126 185127 185128 185129 185130



14

12.035



Trim Line

<p>BM. N271 YR. SY. RM. P. 26 Road Cape in West end, Culvert headwall 8 ft. South 1/4 U.P. 22, E/W 1/4 N 1/4 West of 1/4 of MITH AV. S.M. E.M. 199.165</p>	<p>PROFILE ALIGNMENT AND GRADE OF SANITARY SEWERS TO BE CONSTRUCTED IN TRACT NO 16235 ON GUNN AVENUE BETWEEN PROPOSED TRUNKLINE SEWER 302 FT. SOUTHWEST LIGHT STREET AND MULBERRY DRIVE LIGHT STREET BETWEEN GUNN AVENUE & RUELIS AVENUE</p>
--	--

2

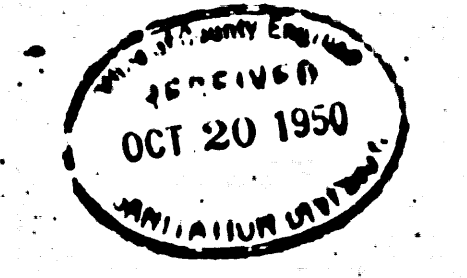
PRIVATE CONTRACT NO. 1481
M.S. 94
SHEET NO. 1 OF 2 SHEETS
SCALE: HORIZ. 1" = 40' VERT. 1" = 4'
AUGUST, 1950
PREPARED IN THE OFFICE OF
KEMMERER KING CO. INC.
JUL 27 1950
REG. C.E. NO. 278

REVISED PLAN
Revised Outlet on Gunn Ave.
Revised location of Sewer Line
on Light Street.

FOR LEGEND SEE PLAN 3-2-66
SEE SHEET #1 FOR CONSTRUCTION NOTES.

REVISION CHECKED BY
James T. Rothen 10/18/50
R.E. No. 7103

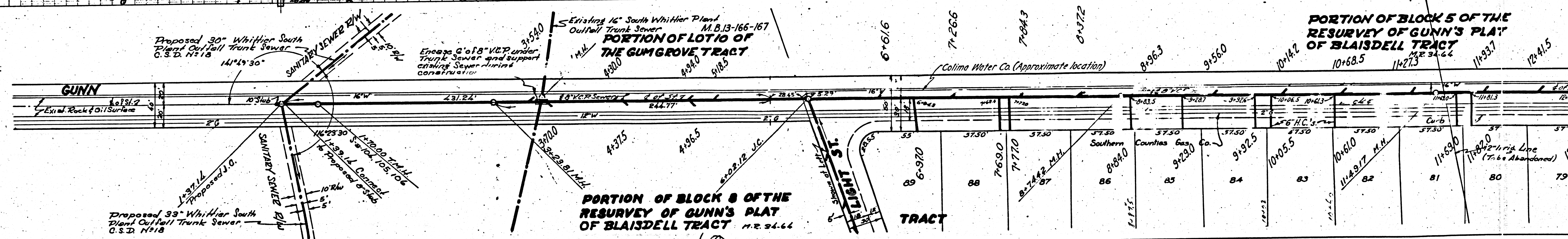
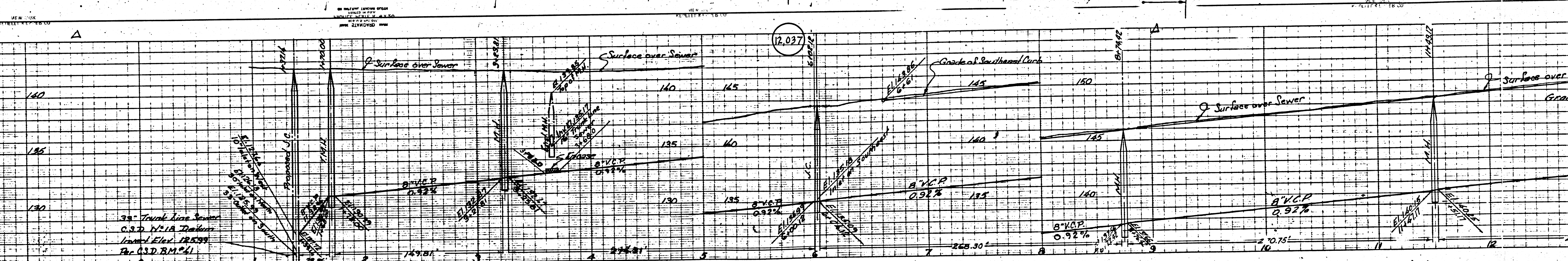
APPROVED [Signature]
COUNTY ENGINEER
APPROVED [Signature]
CHIEF ENGINEER
SANITATION DISTRICT NO. 18
CHECKED BY H. L. Smelser 9-14-50
OFFICE OF COUNTY ENGINEER
REG. C.E. NO. 6412



PC 148
 GUNN AVE. & LIGHT ST.
 1/2" = 40'
 1/2" = 4'
 AUGUST 1950
 KEMMERER KING CO. INC.

Trim Line

(A)

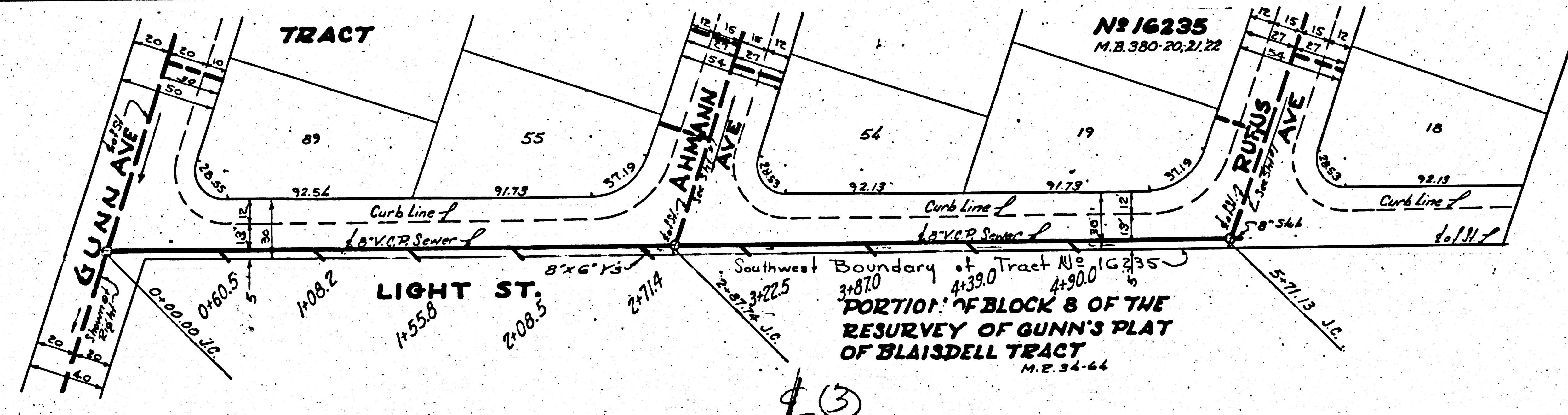
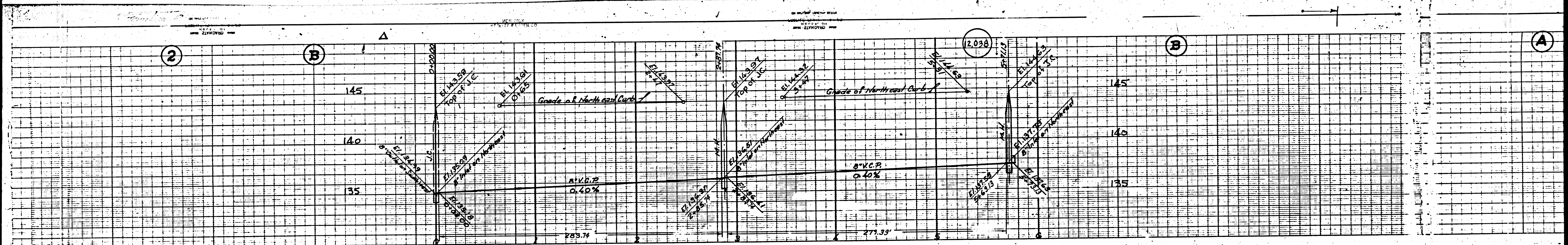


PORTION OF BLOCK 8 OF THE RESURVEY OF GUNN'S PLAT OF BLAISDELL TRACT
M.R. 34.66

PORTION OF BLOCK 5 OF THE RESURVEY OF GUNN'S PLAT OF BLAISDELL TRACT
M.R. 34.66

T.S. 145

M.S.



ST. 11.11
GUNN AVE
LIGHT ST
AHMANN AVE
RUSSELL AVE

Scale 1" = 100'