

**PROFILE ALIGNMENT AND GRADE OF
SANITARY SEWERS
TO BE CONSTRUCTED IN
BEVERLY BOULEVARD
BETWEEN GANDEL AVE. AND RASTERLY LINE DETACHED FROM
SANDOVAL AVENUE
BETWEEN TILMONT ST. AND MELITA ST.
TILMONT STREET
BETWEEN GANDEL AVE. AND SANDOVAL AVE.
IN TRACT NO 16765**

PRIVATE CONTRACT No. 1493
W.S. 37
SHEET 2 OF 2 SHEETS
SCALE: VERT. 1"=4'
HORIZ. 1"=40'
PREPARED IN THE OFFICES OF
BARNETT-HOPEN & SMITH
By *Harold P. Barnett*
RE 15116

**FOR CONSTRUCTION NOTES
SEE SHEET 1**

COUNTY OF LOS ANGELES, CALIFORNIA
APPROVED: *[Signature]*
COUNTY ENGINEER
APPROVED BY: *[Signature]* OFFICE ENGINEER
CREATED: *[Signature]*
OFFICE OF COUNTY ENGINEER R. E. S. 7675

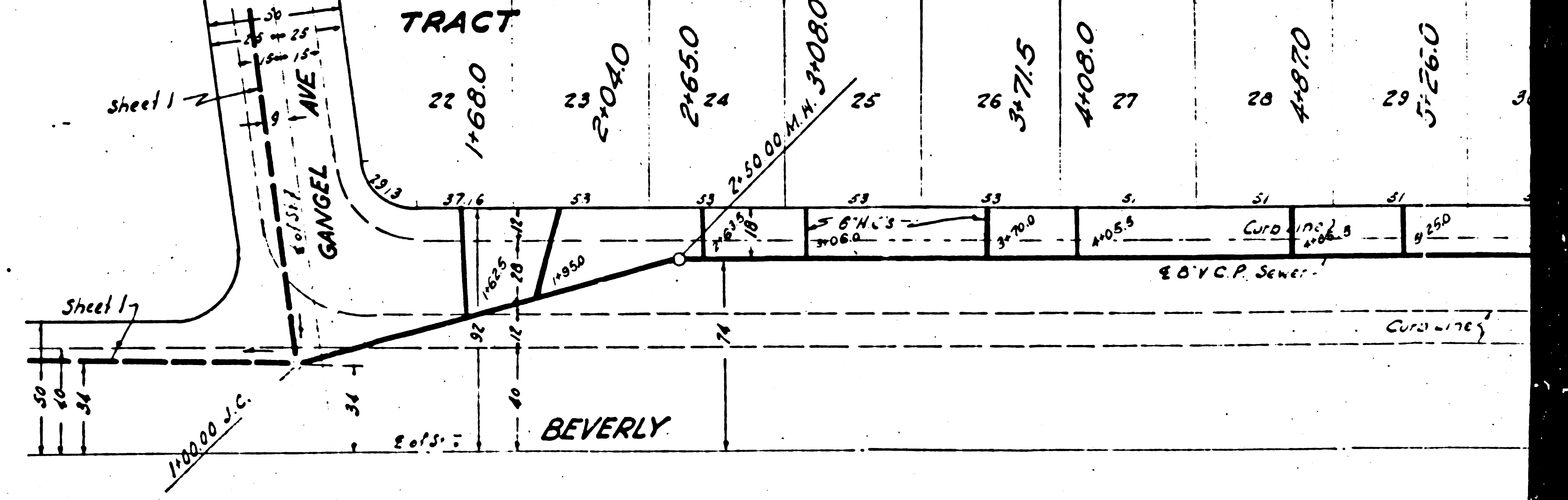
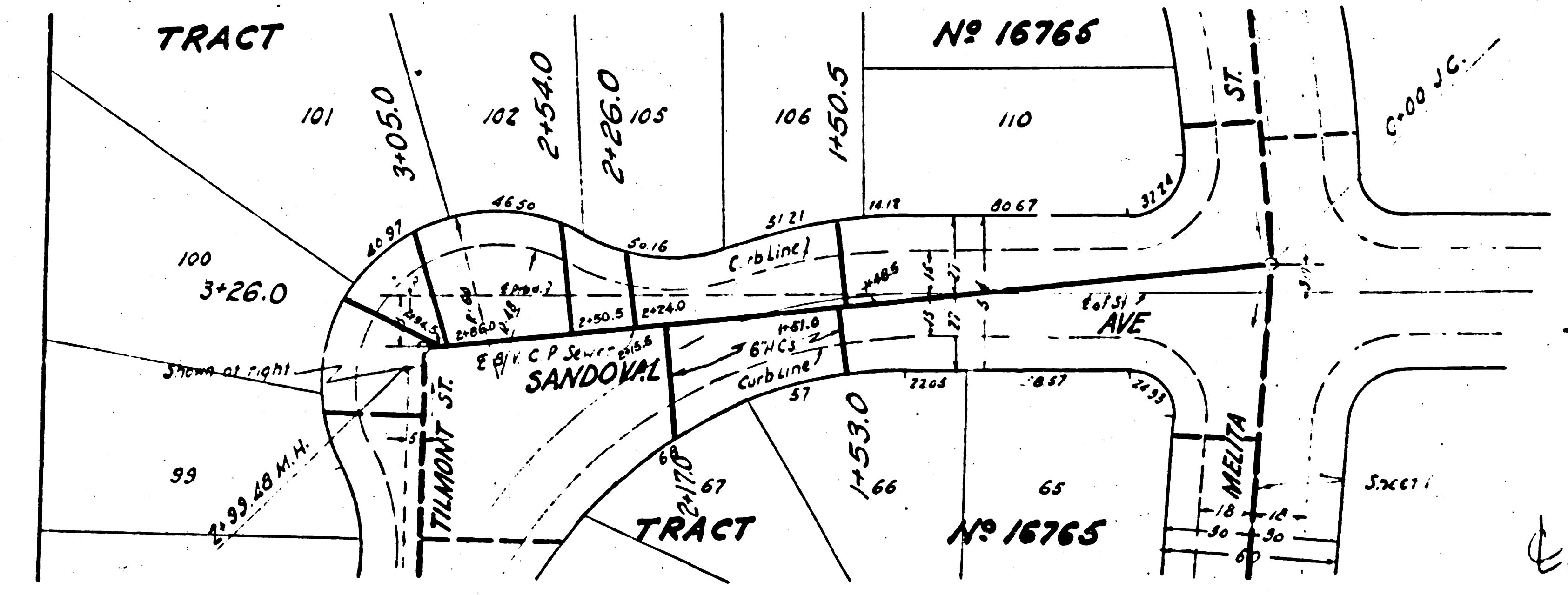
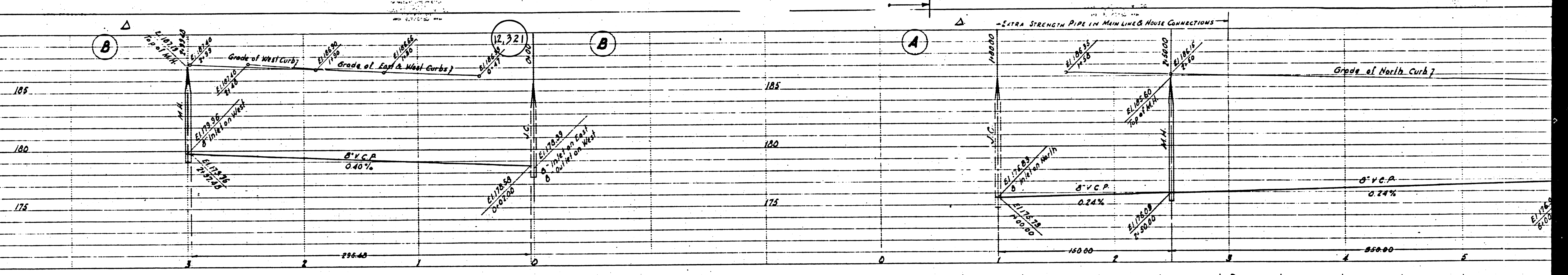
BC 1493
SHEET 2 OF 2

②

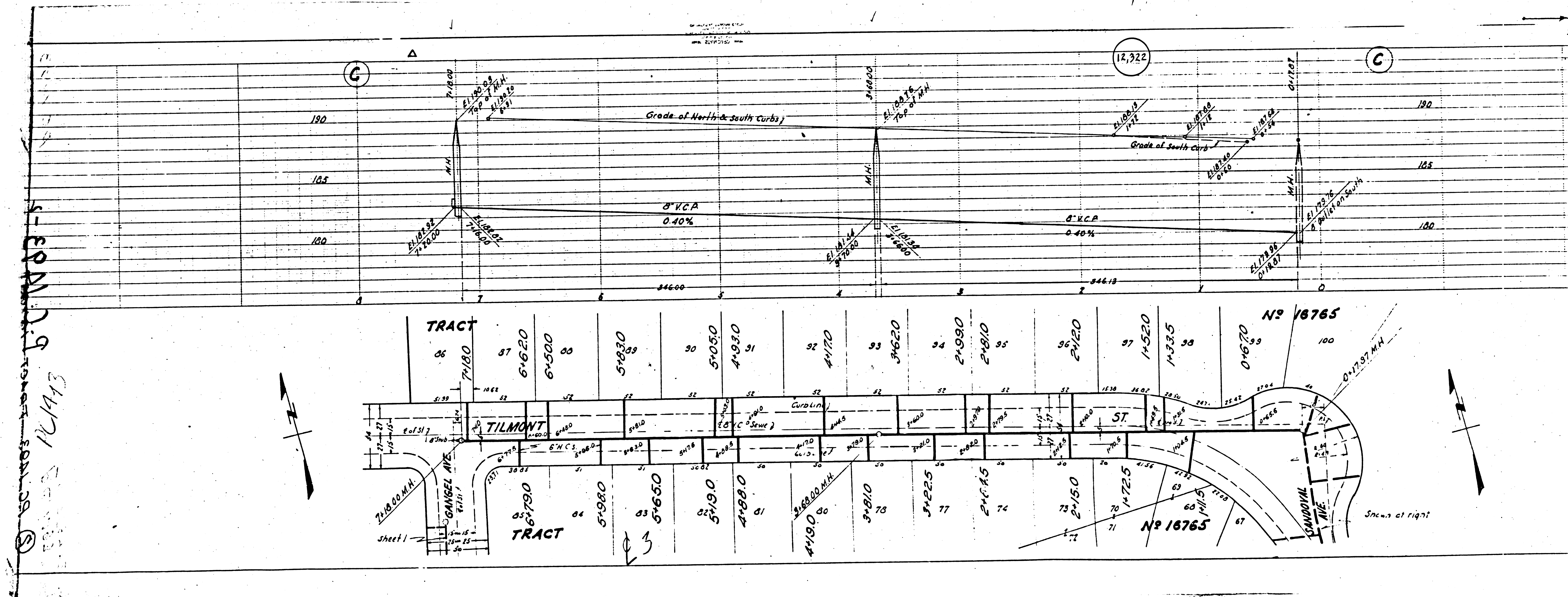
check 4-2-51 W. K.

①

J.P.



(2)



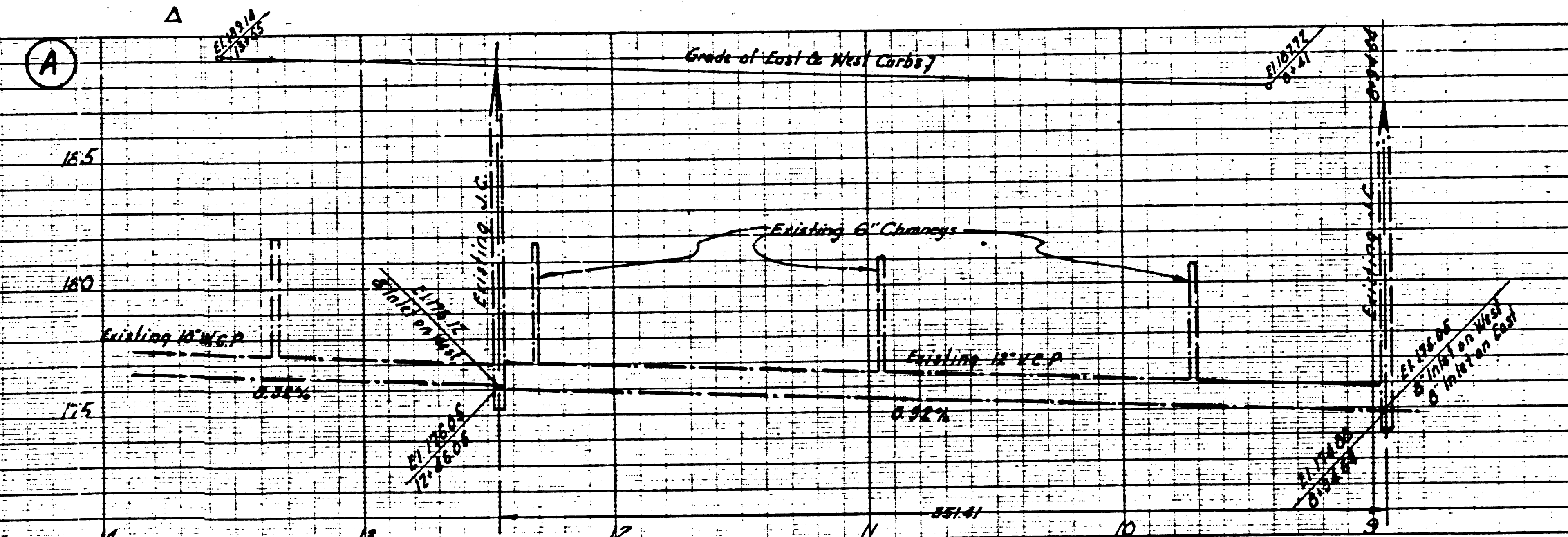
② SC 1063 LONGER 6'0" WIDE - 5'
 10/19/43

NO. 102100
 SCALE: 1" = 40'
 DATE: 12-21-14

NO. 102100
 SCALE: 1" = 40'
 DATE: 12-21-14

Trim Line

NO. 102100
 SCALE: 1" = 40'
 DATE: 12-21-14

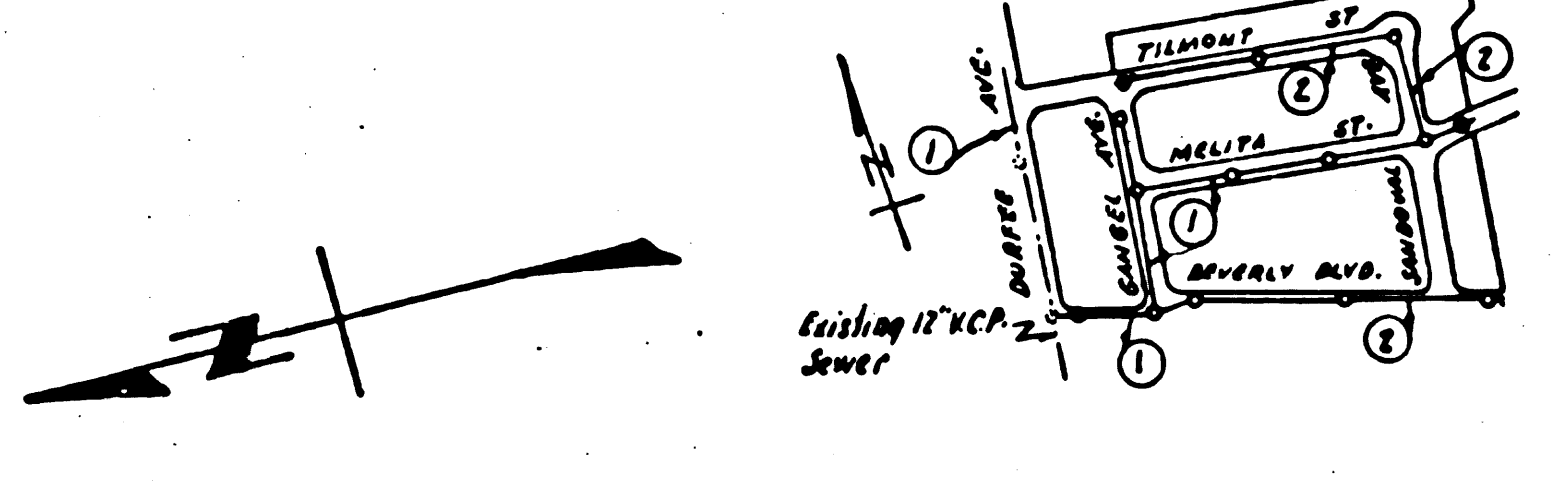
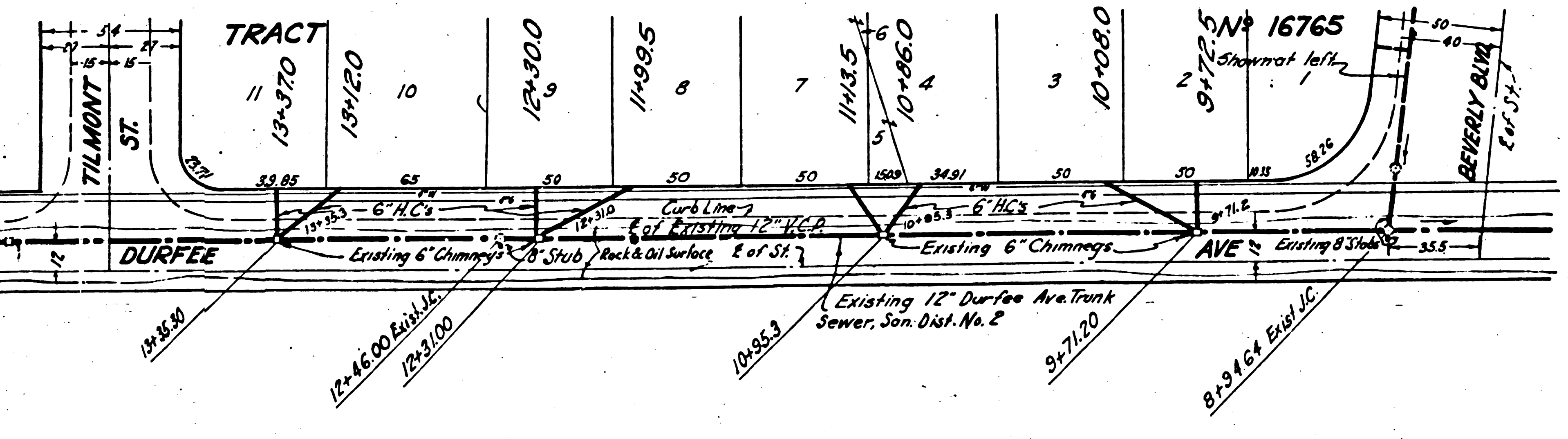


12,317
 12-21-14
 18-18-17
 19-11-18
 20-11-18
 21-11-18
 22-11-18
 23-11-18
 24-11-18
 25-11-18
 26-11-18
 27-11-18
 28-11-18
 29-11-18
 30-11-18
 31-11-18
 32-11-18
 33-11-18
 34-11-18
 35-11-18
 36-11-18
 37-11-18
 38-11-18
 39-11-18
 40-11-18
 41-11-18
 42-11-18
 43-11-18
 44-11-18
 45-11-18
 46-11-18
 47-11-18
 48-11-18
 49-11-18
 50-11-18
 51-11-18
 52-11-18
 53-11-18
 54-11-18
 55-11-18
 56-11-18
 57-11-18
 58-11-18
 59-11-18
 60-11-18
 61-11-18
 62-11-18
 63-11-18
 64-11-18
 65-11-18
 66-11-18
 67-11-18
 68-11-18
 69-11-18
 70-11-18
 71-11-18
 72-11-18
 73-11-18
 74-11-18
 75-11-18
 76-11-18
 77-11-18
 78-11-18
 79-11-18
 80-11-18
 81-11-18
 82-11-18
 83-11-18
 84-11-18
 85-11-18
 86-11-18
 87-11-18
 88-11-18
 89-11-18
 90-11-18
 91-11-18
 92-11-18
 93-11-18
 94-11-18
 95-11-18
 96-11-18
 97-11-18
 98-11-18
 99-11-18
 100-11-18

1. USE STANDARD STANDARD FRAME AND COVER SIZES.
 2. USE STANDARD PIPE SIZES AS NOTED.
 3. ALL STRUCTURES SHALL BE CONSTRUCTED IN ACCORDANCE WITH THE SPECIFICATIONS OF THE COUNTY ENGINEER.
 4. ALL STRUCTURES SHALL BE CONSTRUCTED IN ACCORDANCE WITH THE SPECIFICATIONS OF THE COUNTY ENGINEER.
 5. ALL STRUCTURES SHALL BE CONSTRUCTED IN ACCORDANCE WITH THE SPECIFICATIONS OF THE COUNTY ENGINEER.
 6. ALL STRUCTURES SHALL BE CONSTRUCTED IN ACCORDANCE WITH THE SPECIFICATIONS OF THE COUNTY ENGINEER.
 7. ALL STRUCTURES SHALL BE CONSTRUCTED IN ACCORDANCE WITH THE SPECIFICATIONS OF THE COUNTY ENGINEER.
 8. ALL STRUCTURES SHALL BE CONSTRUCTED IN ACCORDANCE WITH THE SPECIFICATIONS OF THE COUNTY ENGINEER.
 9. ALL STRUCTURES SHALL BE CONSTRUCTED IN ACCORDANCE WITH THE SPECIFICATIONS OF THE COUNTY ENGINEER.
 10. ALL STRUCTURES SHALL BE CONSTRUCTED IN ACCORDANCE WITH THE SPECIFICATIONS OF THE COUNTY ENGINEER.

**PROFILE ALIGNMENT AND GRADE OF
 SANITARY SEWERS
 TO BE CONSTRUCTED IN
 DURFEE AVENUE
 BETWEEN BEVERLY BLVD AND TILMONT ST,
 BEVERLY HILLS, CALIFORNIA
 BETWEEN GANGLAY AND DURFEE AV,
 GANGLAY AVENUE
 BETWEEN BEVERLY BLVD AND TILMONT ST,
 MELITA STREET
 BETWEEN GANGLAY AND SANITARY LINE OF TRACT NO. 16765
 IN TRACT NO. 16765**

PRIVATE CONTRACT No. 1493
SHEET 1 OF 2 SHEETS
 PREPARED BY THE ENGINEER FOR
 Harold A. Smith
 Nov 8 1930



INDEX MAP
 AC. 123 1/2 IN. 1937
 TRACT NO. 16765
 Scale 1" = 400'

FOR LEGEND
 1. GRADES TO WHICH THE IMPROVEMENTS ARE TO BE CONSTRUCTED ARE SHOWN ON THIS PLAN.
 2. GRADE POINTS FOR TOP OF CURB CENTER LINE OF STREET OR CENTER LINE OF ALLEY ARE SHOWN ON PROFILE AND POINTS BETWEEN ARE SHOWN ON THIS PLAN.
 3. GRADES TO WHICH THE IMPROVEMENTS ARE TO BE CONSTRUCTED ARE SHOWN ON THIS PLAN.
 4. GRADE POINTS FOR TOP OF CURB CENTER LINE OF STREET OR CENTER LINE OF ALLEY ARE SHOWN ON PROFILE AND POINTS BETWEEN ARE SHOWN ON THIS PLAN.
 5. GRADES TO WHICH THE IMPROVEMENTS ARE TO BE CONSTRUCTED ARE SHOWN ON THIS PLAN.
 6. GRADE POINTS FOR TOP OF CURB CENTER LINE OF STREET OR CENTER LINE OF ALLEY ARE SHOWN ON PROFILE AND POINTS BETWEEN ARE SHOWN ON THIS PLAN.
 7. GRADES TO WHICH THE IMPROVEMENTS ARE TO BE CONSTRUCTED ARE SHOWN ON THIS PLAN.
 8. GRADE POINTS FOR TOP OF CURB CENTER LINE OF STREET OR CENTER LINE OF ALLEY ARE SHOWN ON PROFILE AND POINTS BETWEEN ARE SHOWN ON THIS PLAN.
 9. GRADES TO WHICH THE IMPROVEMENTS ARE TO BE CONSTRUCTED ARE SHOWN ON THIS PLAN.
 10. GRADE POINTS FOR TOP OF CURB CENTER LINE OF STREET OR CENTER LINE OF ALLEY ARE SHOWN ON PROFILE AND POINTS BETWEEN ARE SHOWN ON THIS PLAN.

COUNTY OF LOS ANGELES, CALIFORNIA
 APPROVED: _____
 COUNTY ENGINEER
 APPROVED BY: _____
 OFFICE ENGINEER
 CHECKED: _____
 OFFICE OF COUNTY ENGINEER

20

checked 1-2-51 W. H. W. W.

Trim Line

101493

ON 1/2" = 1' SCALE FROM
PLAN OF ST. 12, 13, 14
NO. 16765

ON 1/2" = 1' SCALE FROM
PLAN OF ST. 12, 13, 14
NO. 16765

ON 1/2" = 1' SCALE FROM
PLAN OF ST. 12, 13, 14
NO. 16765

