

PROFILE ALIGNMENT AND GRADE OF  
SANITARY SEWERS  
TO BE CONSTRUCTED IN  
**BIRCHLEAF AVENUE**  
BETWEEN THE CENTER LINE OF LA DOCENA  
LANE AND A POINT 235' SOUTHWESTERLY THEREFROM

PRIVATE CONTRACT No. 1501  
W. B. 36  
SHEET 1 OF 1 SHEET  
AUGUST, 1950

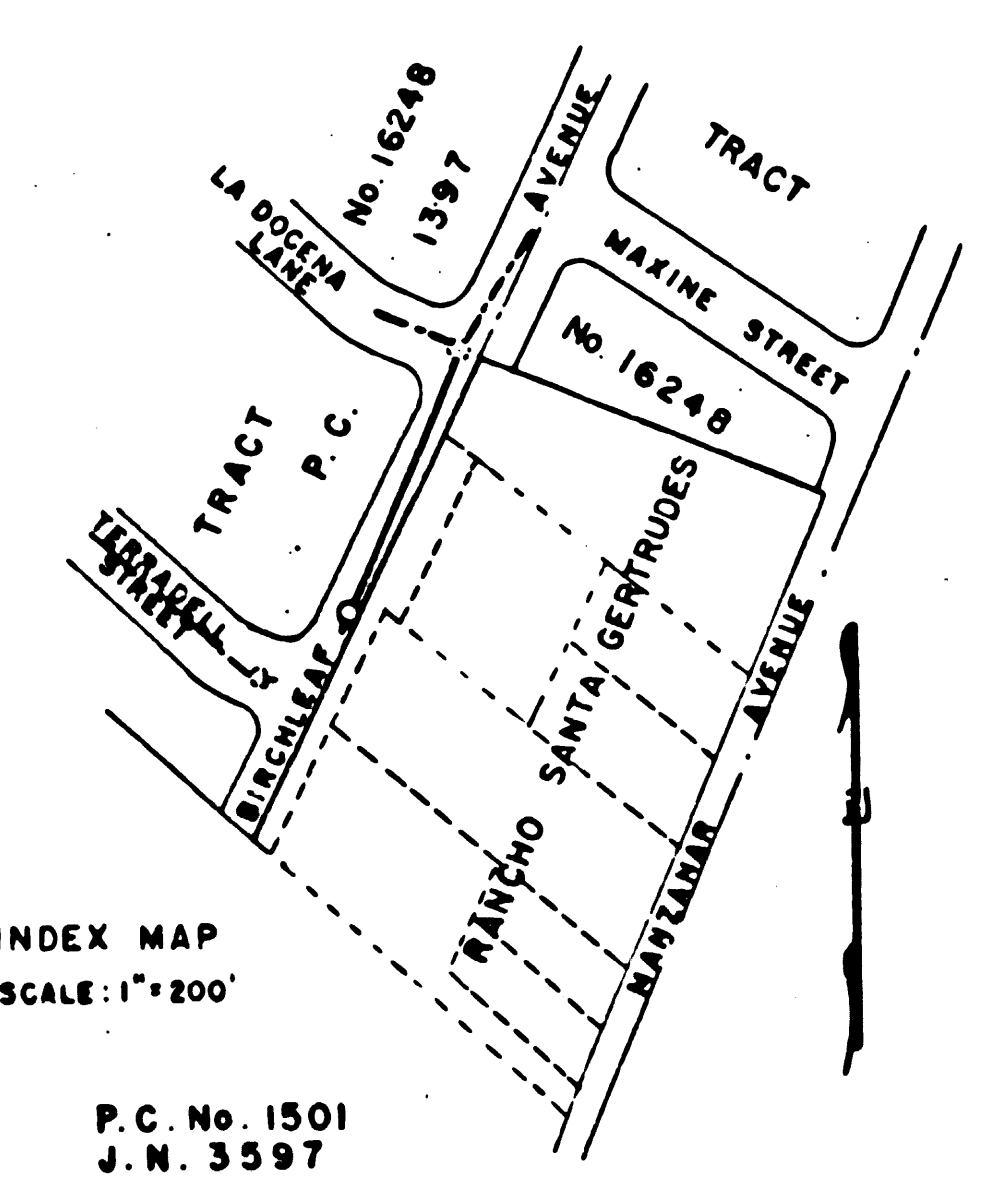
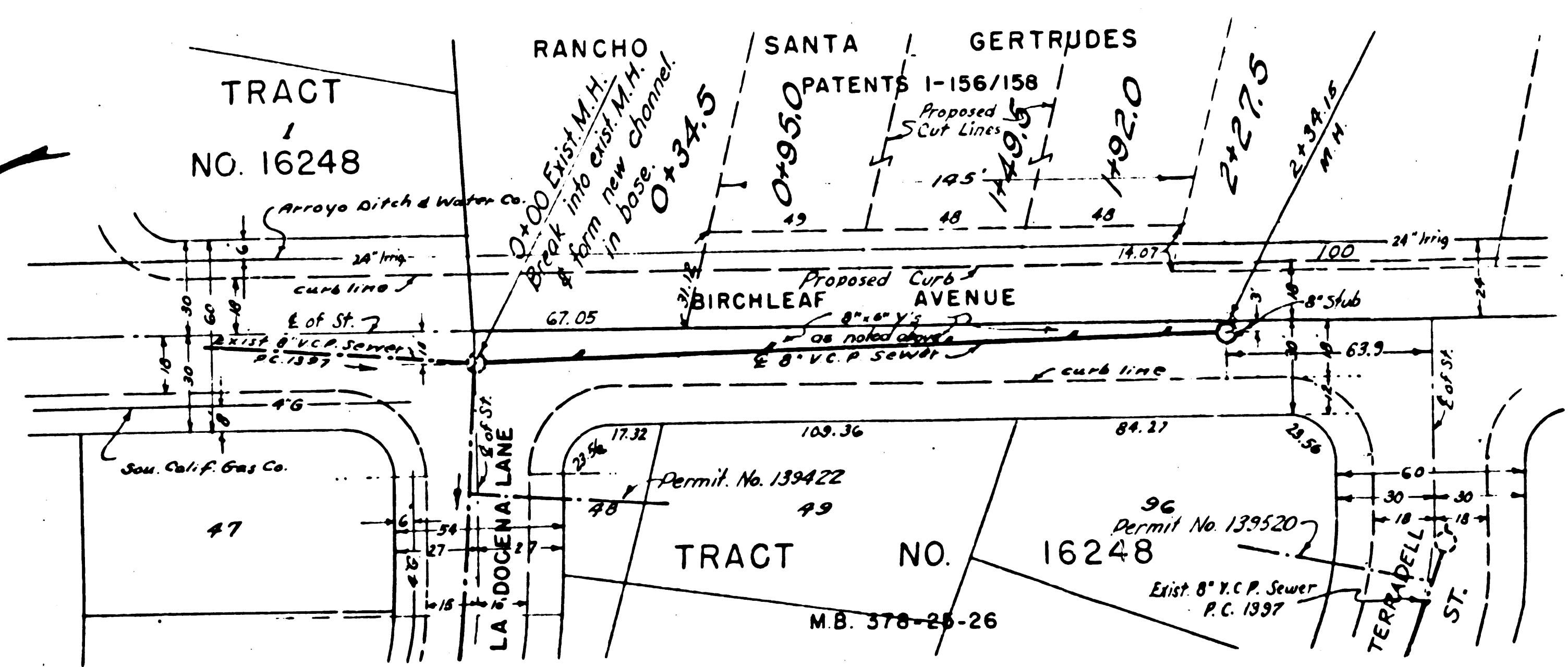
PREPARED IN THE OFFICES OF  
GLEN ROOD, Registered Engineer  
Compton, California  
REG. C. E. No. 2095

FOR LEGEND

INDEX MAP  
SCALE: 1" = 200'

P.C. No. 1501  
J.W. 3557

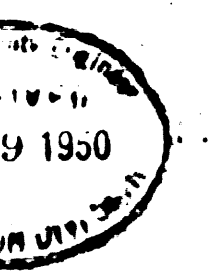
County of Los Angeles, California  
Chief Deputy  
Attest  
Richard E. Kuhn  
10-5-50  
7660

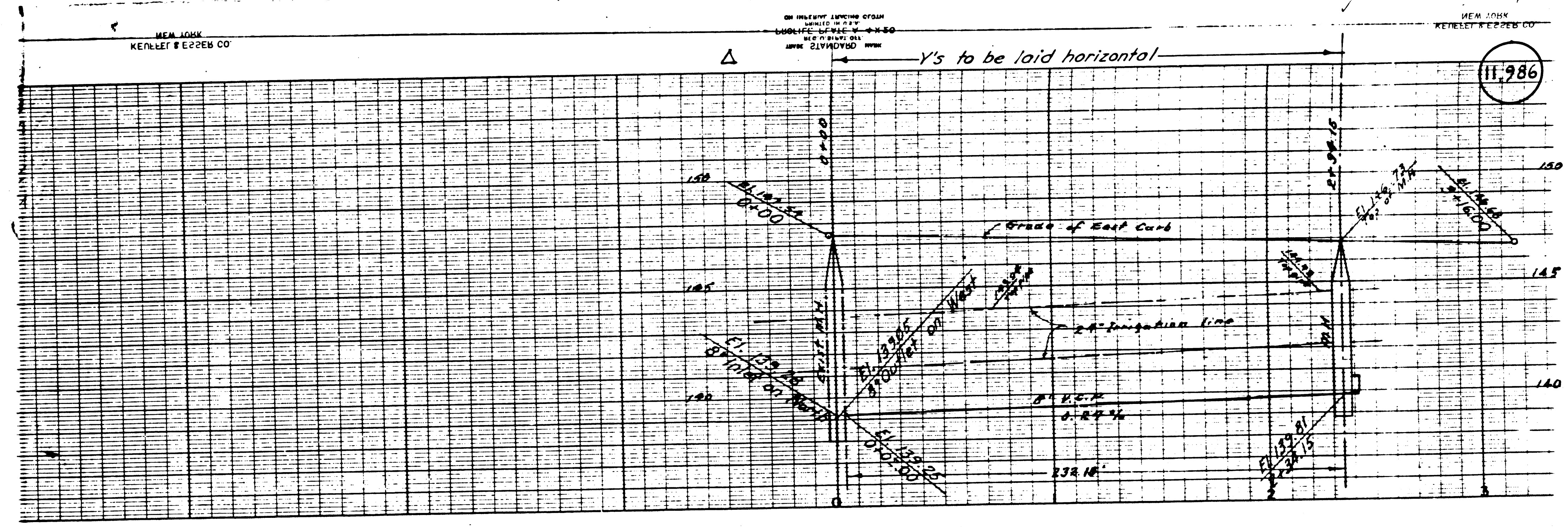


P.C. 1501

£ 10

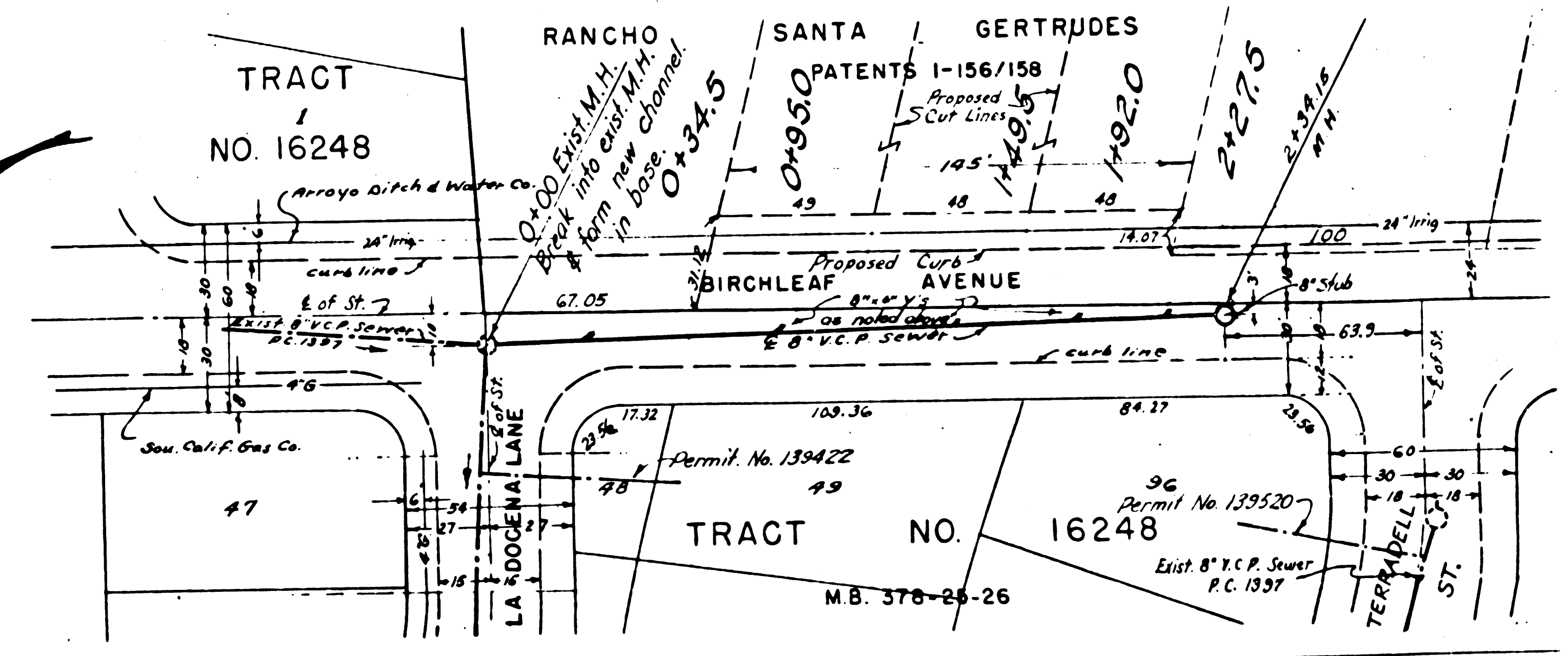
August 22-51 Kuhn





P.C. 1501

40



INDEX SCALE

f. d.