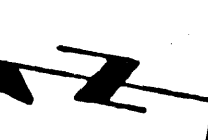


11,688

C

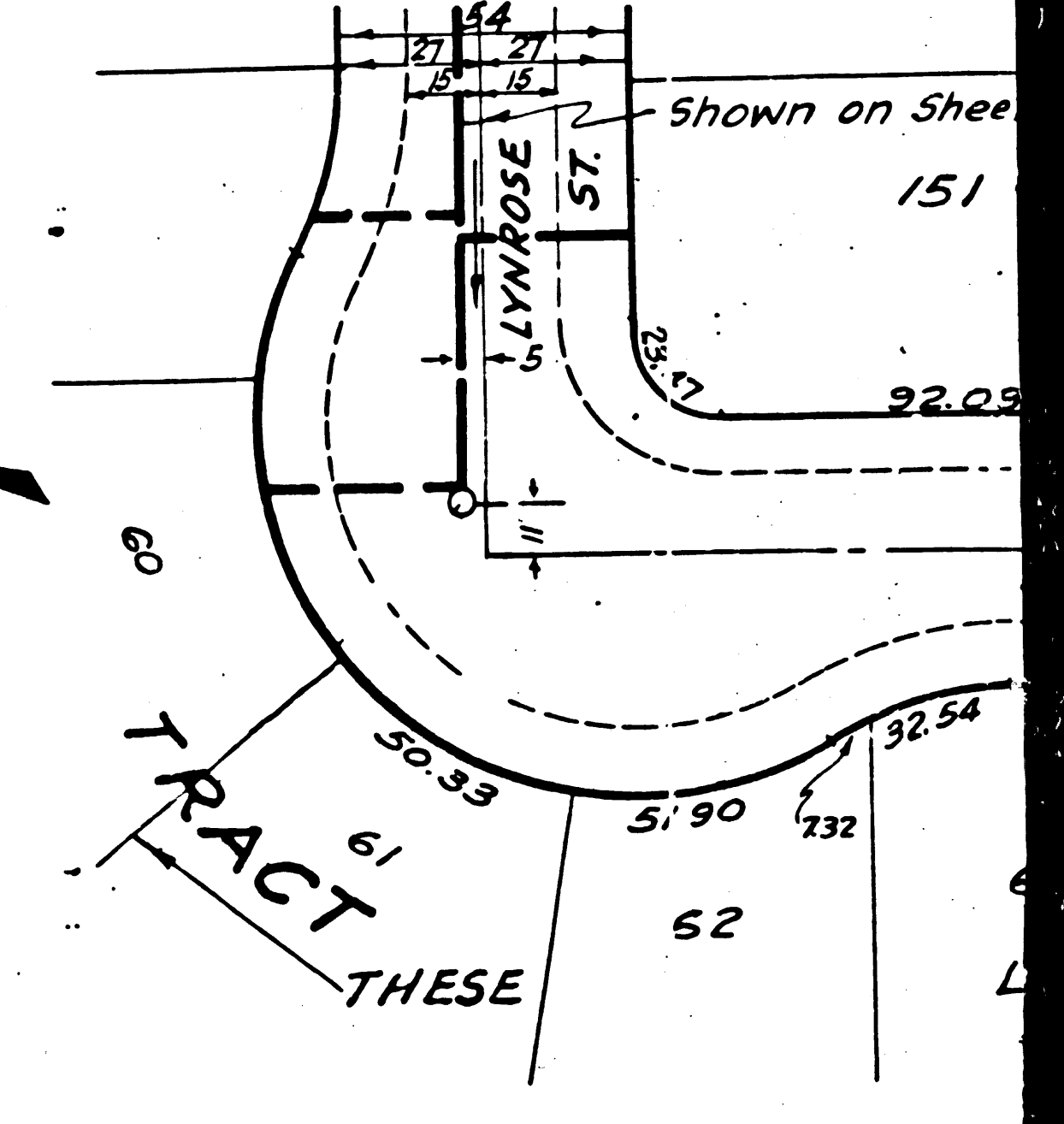
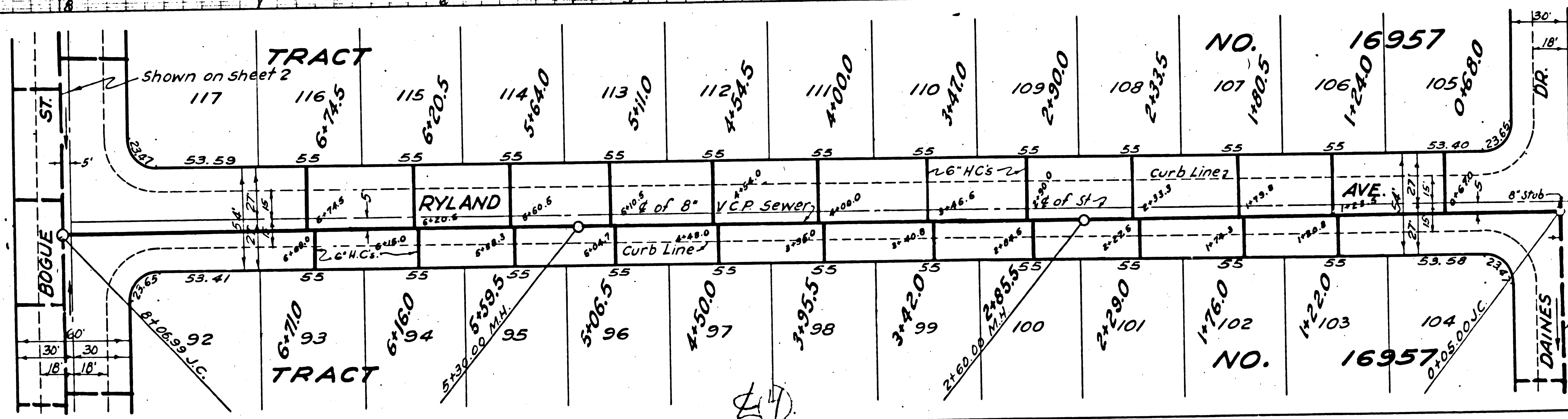
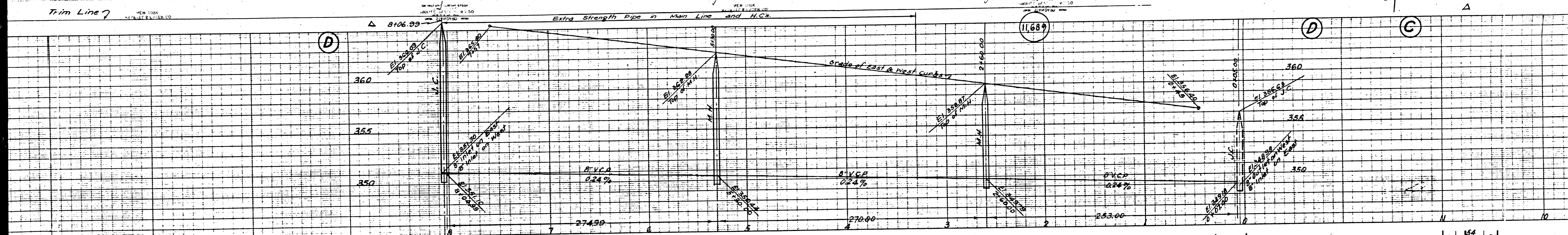
B



20

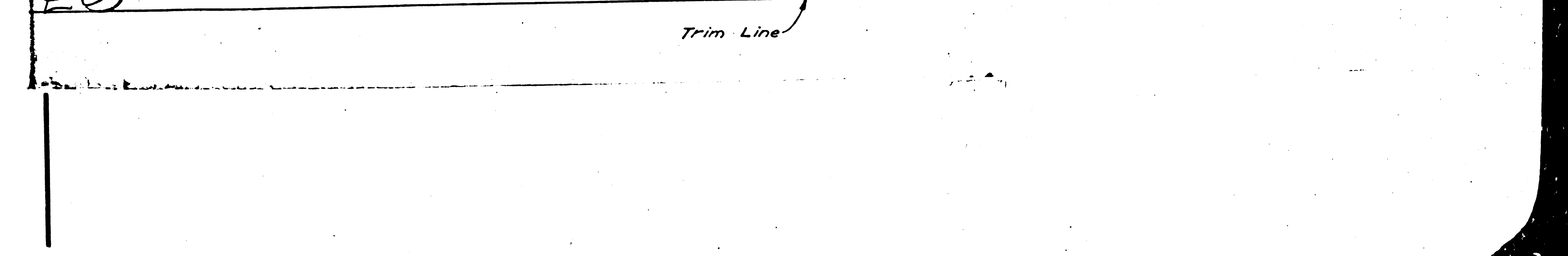
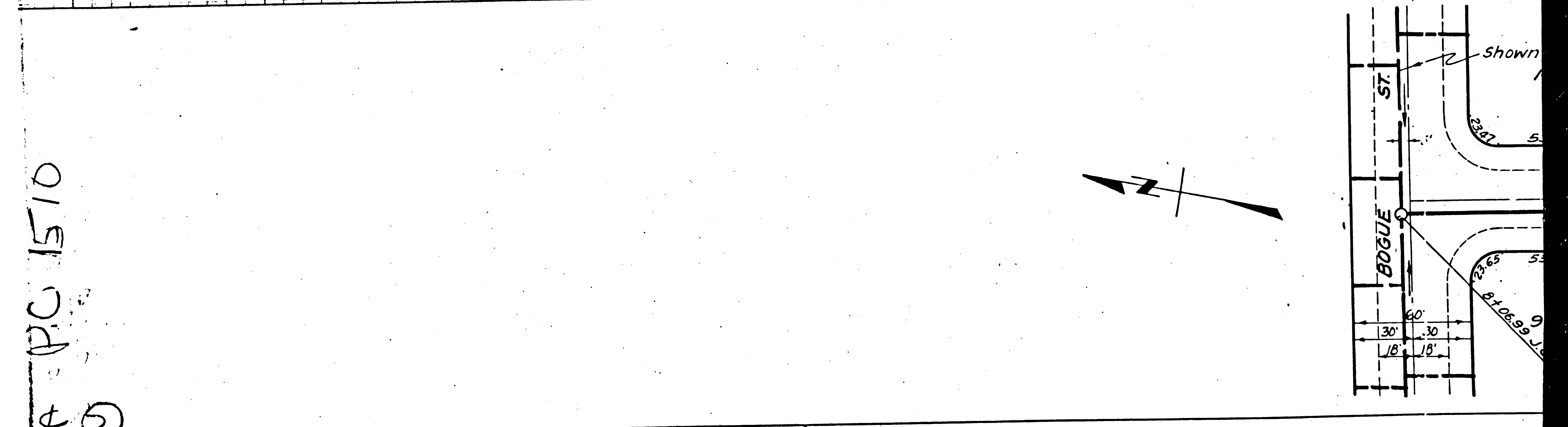
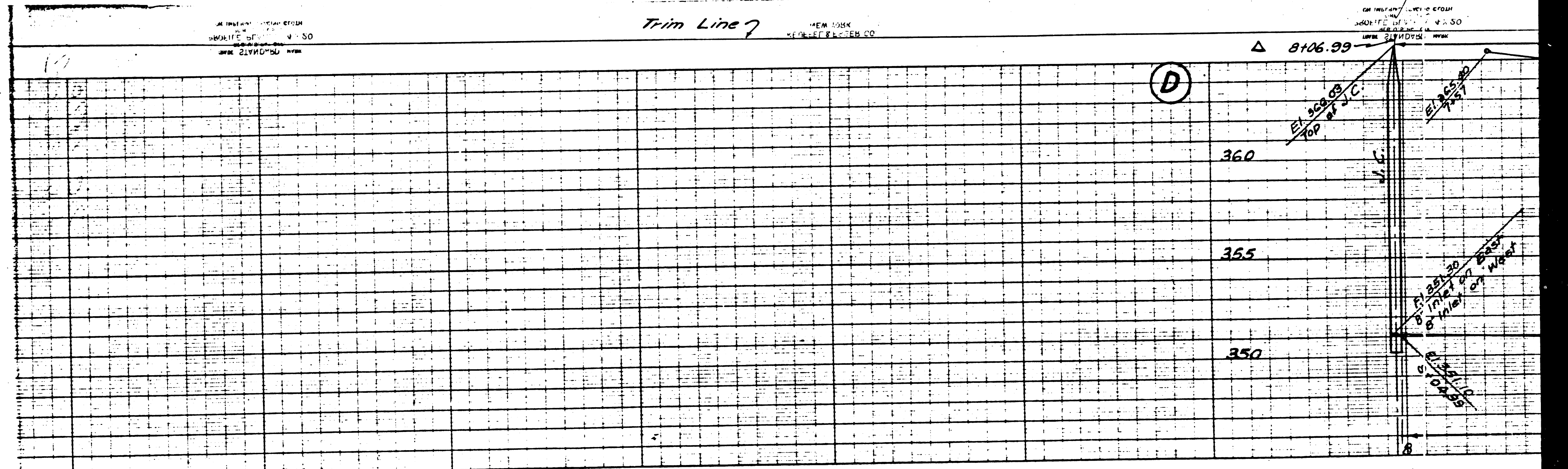


Trim Line

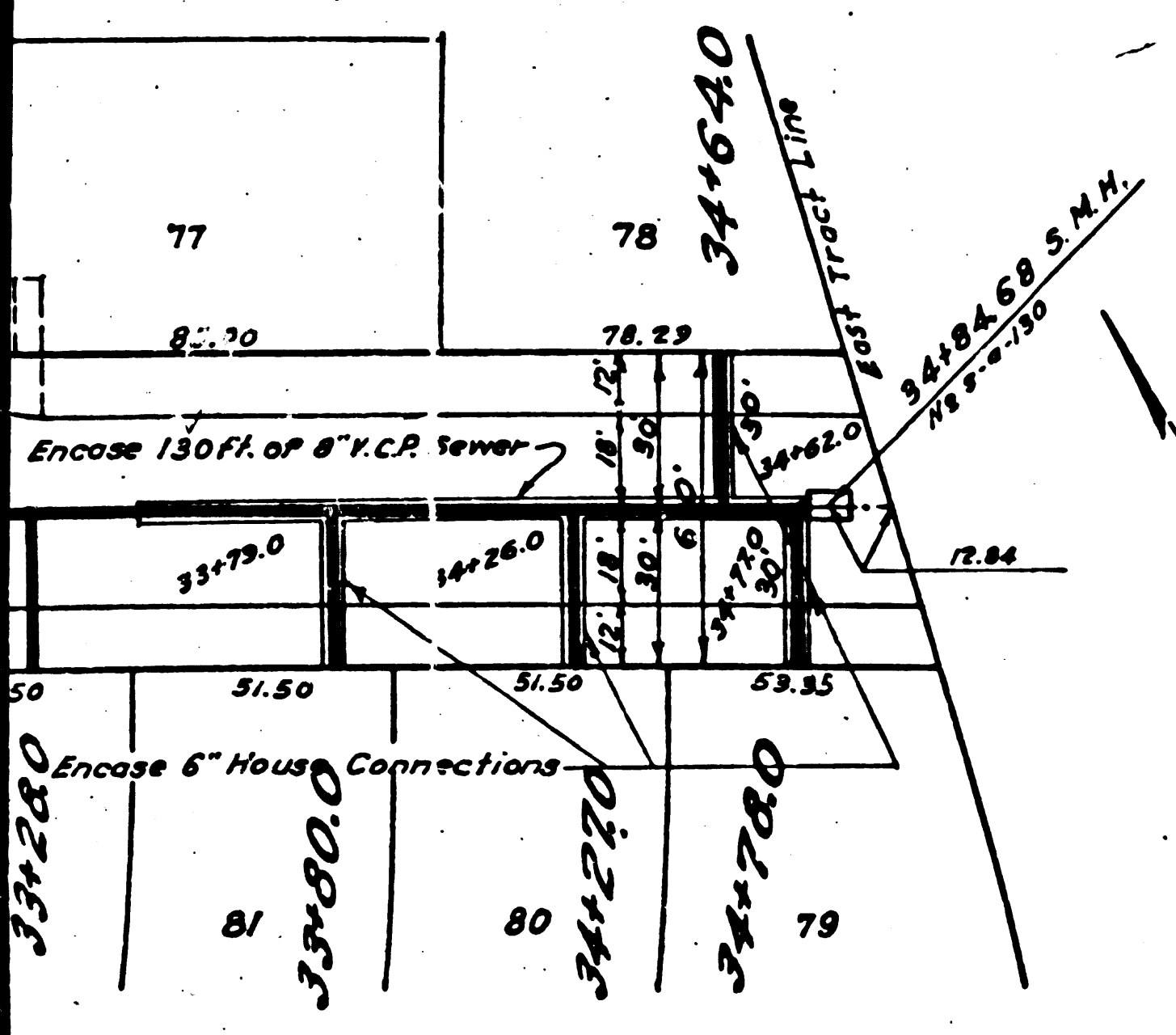
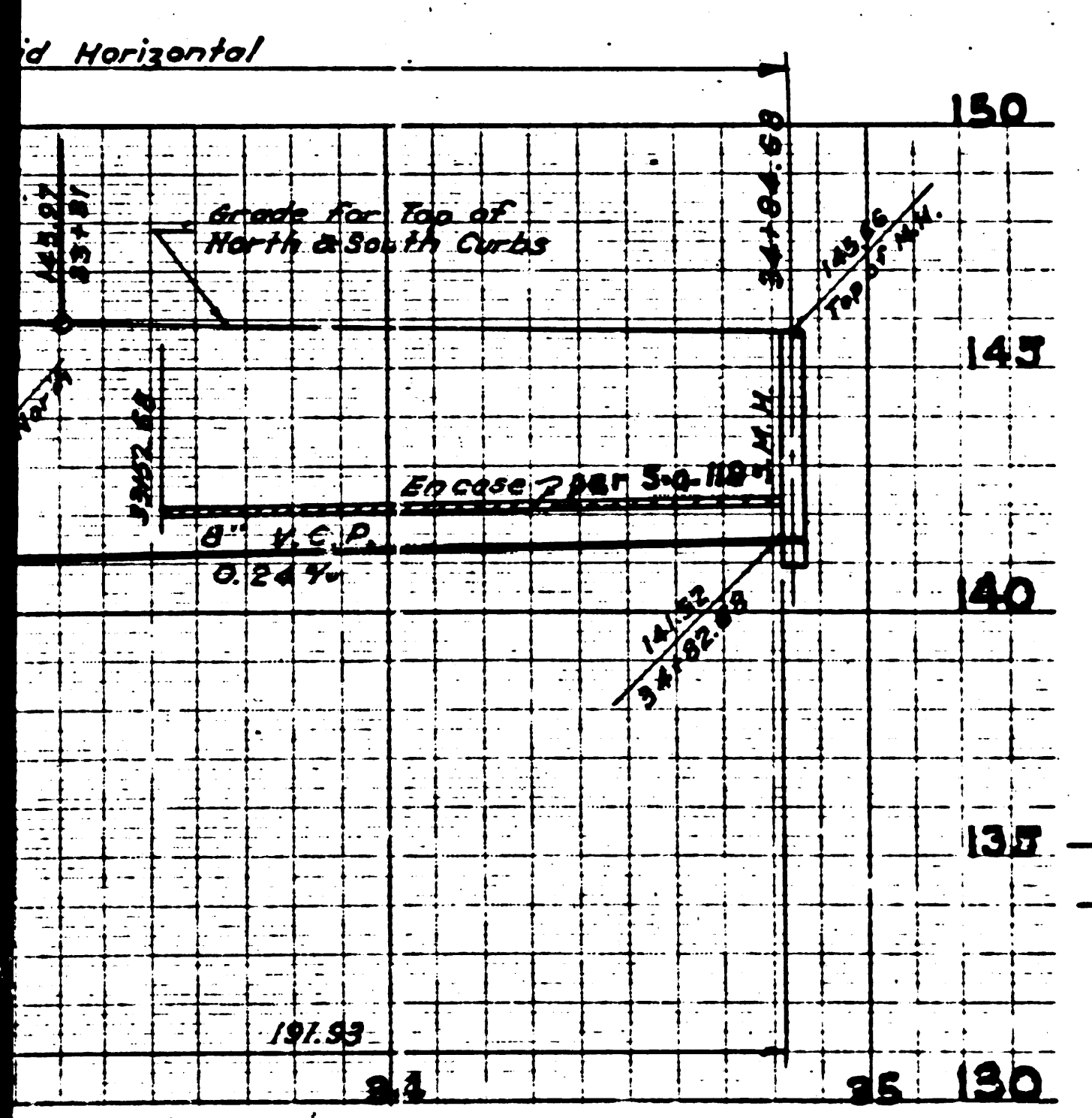


Trim Line

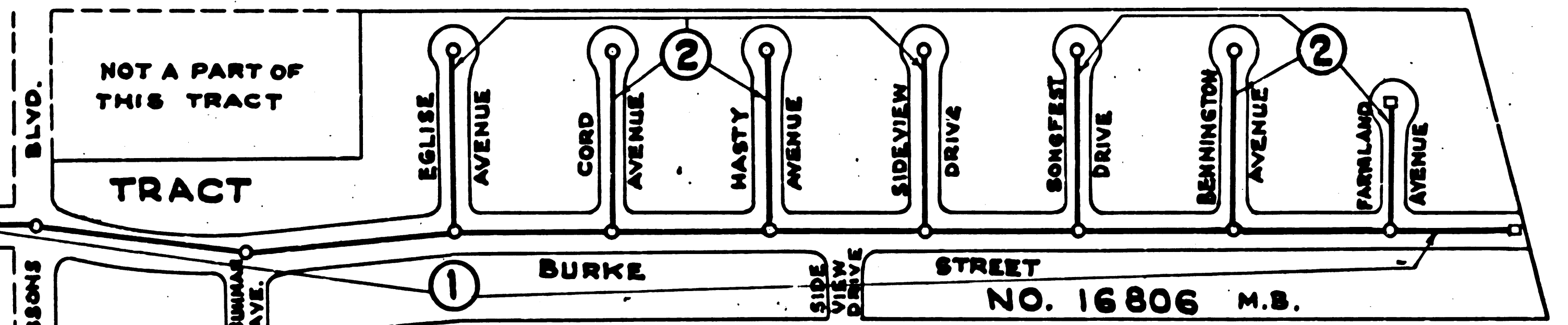




P.C. 1510  
 45



B.M. Elev. = 153.926  
 S.Y. # 91 Page 17, L.A. County  
 Road Dept. Spk. in Lead  
 N.W. Cor. Weir Box S.E. Cor.  
 of Intersection of Parsons  
 Blvd. & P.E. R/W.



KEY MAP  
 SCALE: 1"=200'  
 P.C. 1512 J.N. 3608

- NOTES:**
- 1 Use Standard <sup>(11,939)</sup> whole Frame & Covers S-a-17 Except as noted
  - 2 Use Standard strength Pipe except as noted
  - 3 Use Cement Mortar for all Vitrified Clay Pipe Joints
  - 4 All Structures shall be Brick Sewer Structures S-a-104 Except as noted
  - 5 Encase Four Feet of Sewer at points of Interference with Poles, per S-a-119
  - 6 Construct H.C.s with 1/4" rise per Ft. to property line except as noted.
  - 7 Resurface all Trench within paved area to meet Los Angeles County Road Dept. Standards.
- NOTE:**
- No Representative of the County Engineer will Survey or Layout any portion of the work. The Owner or his authorized representative shall furnish the County Engineer with Grade Sheets and Stations for all House Connections & Y Branches and shall provide Stakes for them at their proper location with stationing plainly marked. Any change of location shall be requested in writing by the owner or his representative.
- No revisions shall be made in these plans without the approval of the County Engineer. Provide Stakes on the Property Lines or Property Lines produced at right angles to the Sewer Lines at Center Line of each Manhole.

**PROFILE, ALIGNMENT AND GRADE OF  
 SANITARY SEWERS  
 TO BE CONSTRUCTED IN  
 BURKE STREET  
 FROM EAST TRACT LINE NO. 16806 TO TOPEKA STREET  
 PRIVATE CONTRACT NO. 1512  
 W.S. NO. 36**

**SHEET 1 OF 2 SHEETS**  
 SCALE: VERT. 1"=4'  
 HORIZ. 1"=40' AUGUST 1950

PREPARED IN THE OFFICES OF  
**HAROLD M. TEGART**  
 BY *Harold M. Tegart*  
 REG. C.E. NO. 2181  
 NOV 29 1950

**NOTES:**

Grades to which this Improvement is to be constructed are shown on Plans & Profiles. Grade Points for Top of Curb, Center Line of Street or Center Line of Alley are shown by Circles on Profiles. At all points between designated points the grade shall be established so as to conform to a straight line drawn between said designated points.

Elevations are in feet above U.S.G.S. Datum or Mean Sea Level.

This drawing and the data hereon are hereby made a part of the specifications. Work shall be constructed according to specifications on file in the office of the County Engineer and shall be prosecuted only in the presence of the County Engineer. Before work can be started, the contractor must obtain a permit to excavate in County streets from the L.A. County Road Dept., 211 So. Main Street and make a deposit with the County Engineer, 328 L.A. County Engineering Bldg., sufficient to cover the cost of construction inspection and record plans.

Approval of this plan by the County of Los Angeles does not constitute a representation as to the accuracy of the location of or the existence or non-existence of any underground utility, pipe or structure within the limits of this project.

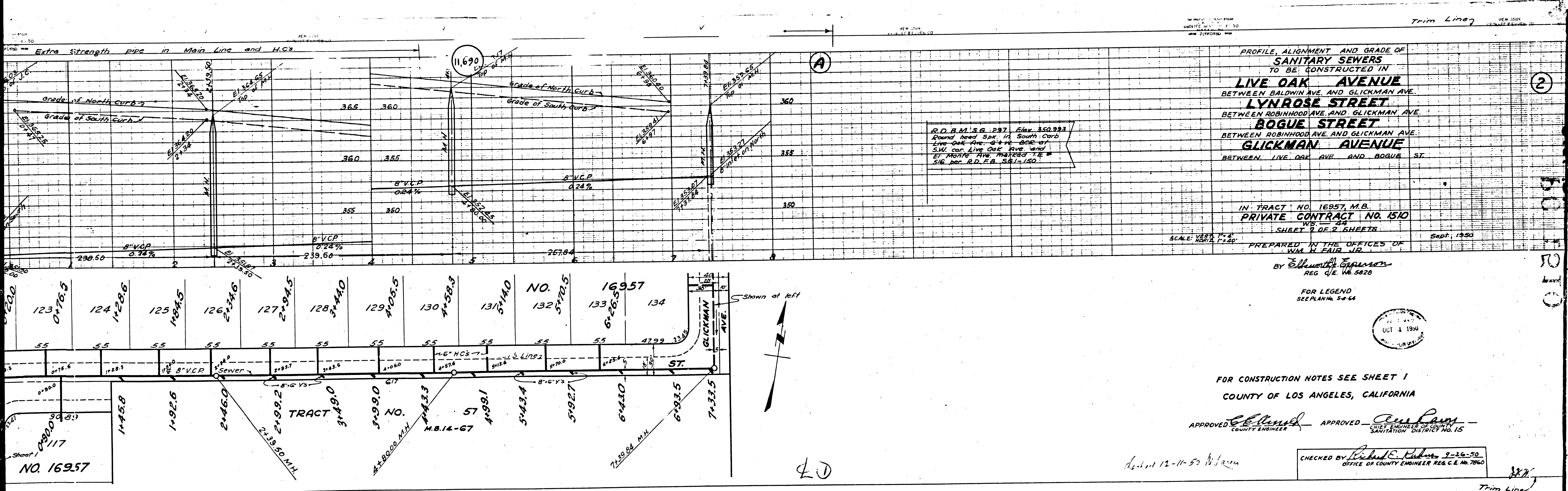
COUNTY OF LOS ANGELES, CALIFORNIA.  
 APPROVED *[Signature]* COUNTY ENGINEER  
 APPROVED BY *[Signature]* OFFICE ENGINEER  
 CHECKED BY *[Signature]* 11-8-50  
 OFFICE OF COUNTY ENGINEER ROOM 7704

LD

done 2-6-51

11  
 10  
 9  
 8  
 7  
 6  
 5  
 4  
 3  
 2  
 1



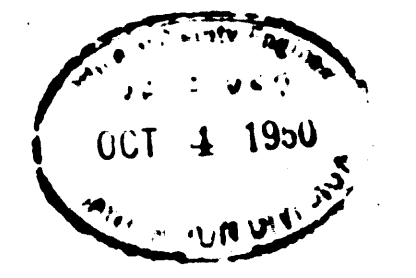


PROFILE, ALIGNMENT AND GRADE OF  
**SANITARY SEWERS**  
 TO BE CONSTRUCTED IN  
**LIVE OAK AVENUE**  
 BETWEEN BALDWIN AVE. AND GLICKMAN AVE.  
**LYNROSE STREET**  
 BETWEEN ROBINHOOD AVE. AND GLICKMAN AVE.  
**BOGUE STREET**  
 BETWEEN ROBINHOOD AVE. AND GLICKMAN AVE.  
**GLICKMAN AVENUE**  
 BETWEEN LIVE OAK AVE. AND BOGUE ST.

IN TRACT NO. 16957, M.B.  
**PRIVATE CONTRACT NO. 1510**  
 SHEET 9 OF 2 SHEETS  
 PREPARED IN THE OFFICES OF  
 Wm. H. FAIR, JR.  
 Sept. 1950

By **Edmund H. Freeman**  
 REG. C.E. No. 5020

FOR LEGEND  
 SEE PLAN No. 54-64



FOR CONSTRUCTION NOTES SEE SHEET 1  
 COUNTY OF LOS ANGELES, CALIFORNIA

APPROVED **Edmund H. Freeman** COUNTY ENGINEER  
 APPROVED **Wm. H. Fair, Jr.** CHIEF ENGINEER OF COUNTY SANITATION DISTRICT NO. 15

CHECKED BY **Richard E. Roberts** 9-26-50  
 OFFICE OF COUNTY ENGINEER REG. C.E. NO. 7060

Sept. 12-11-50 W. J. ...

2

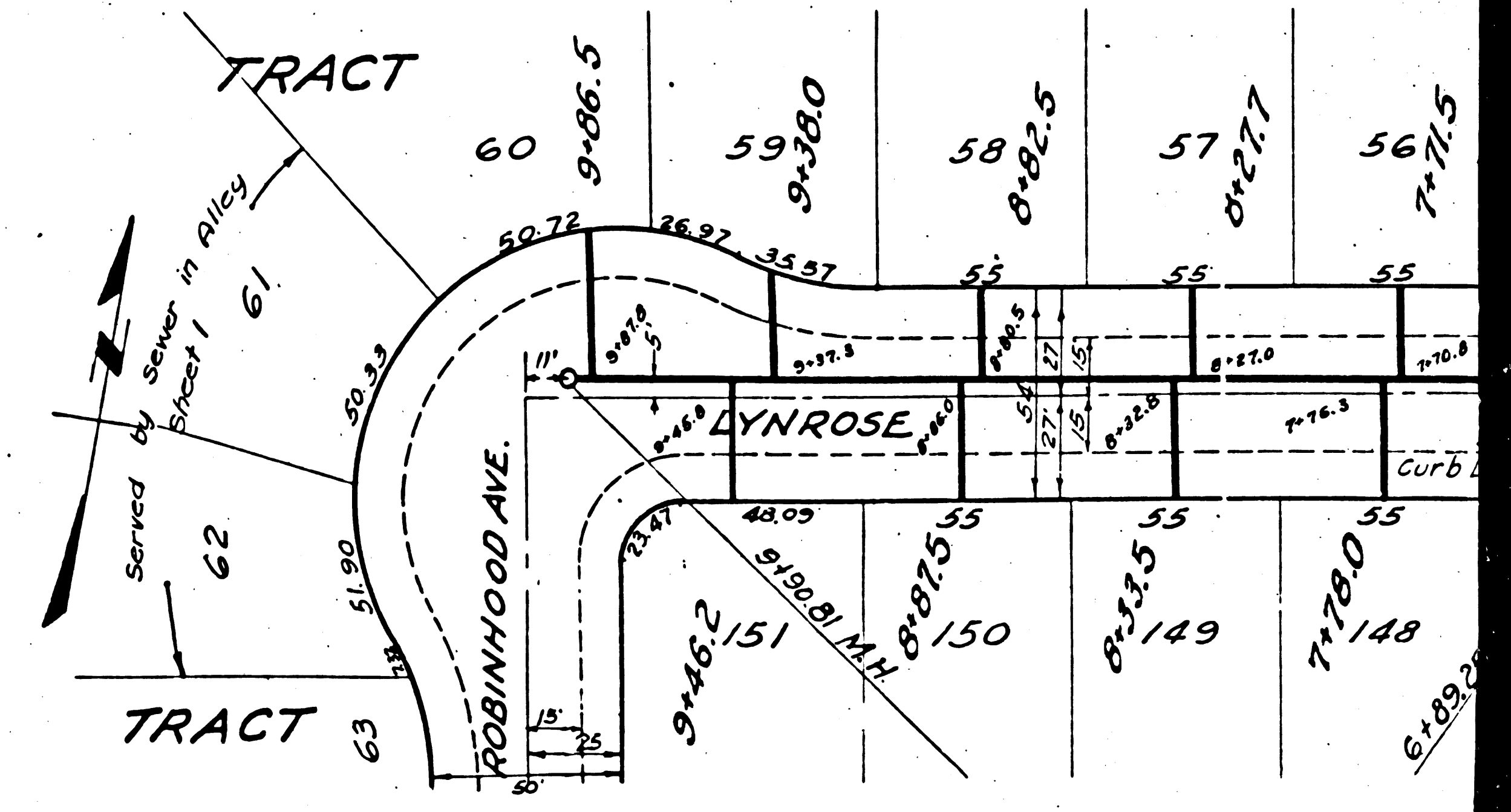
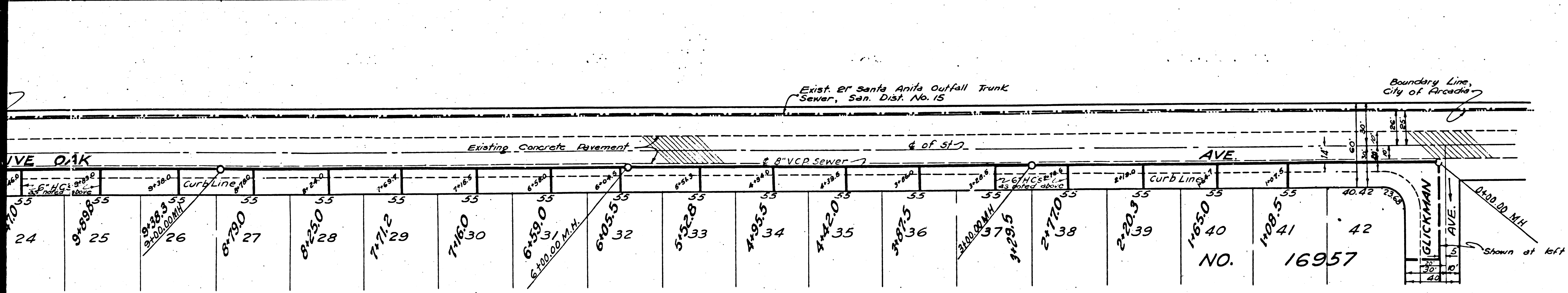
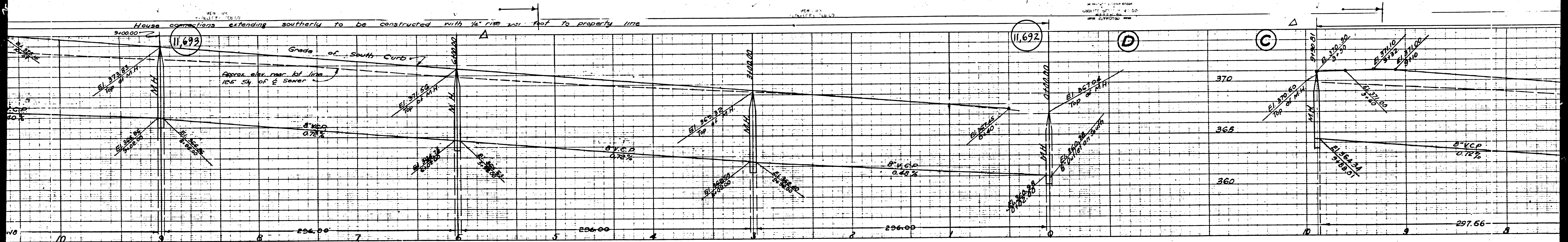
LJ

Trim Line



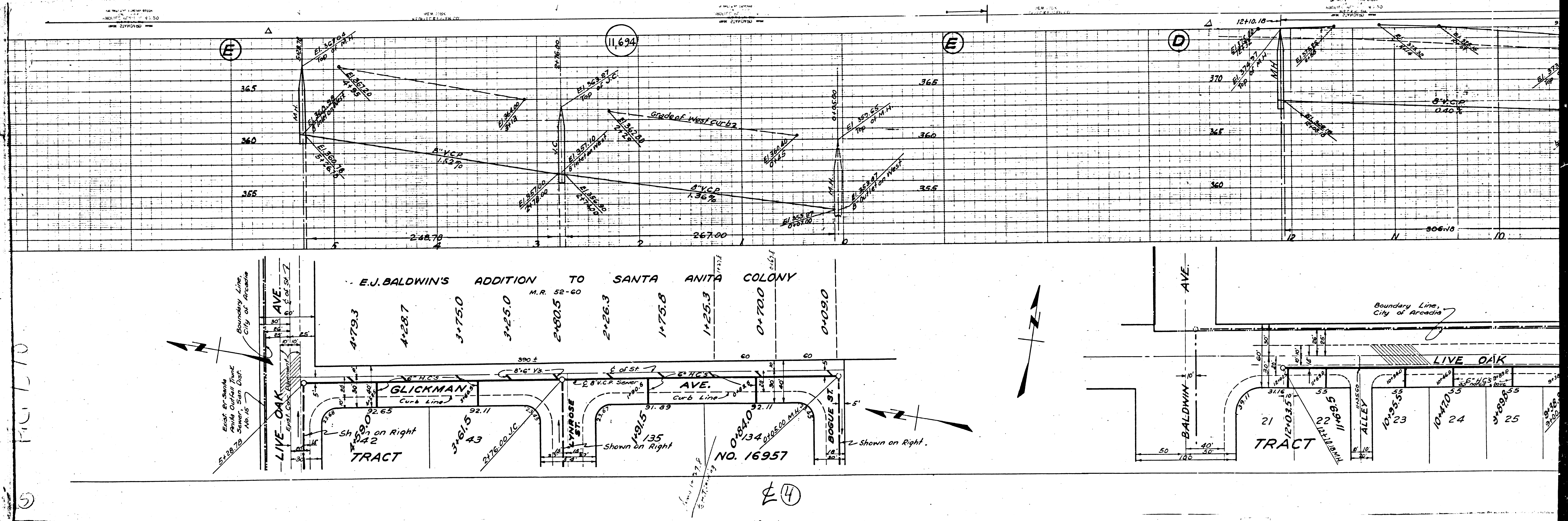




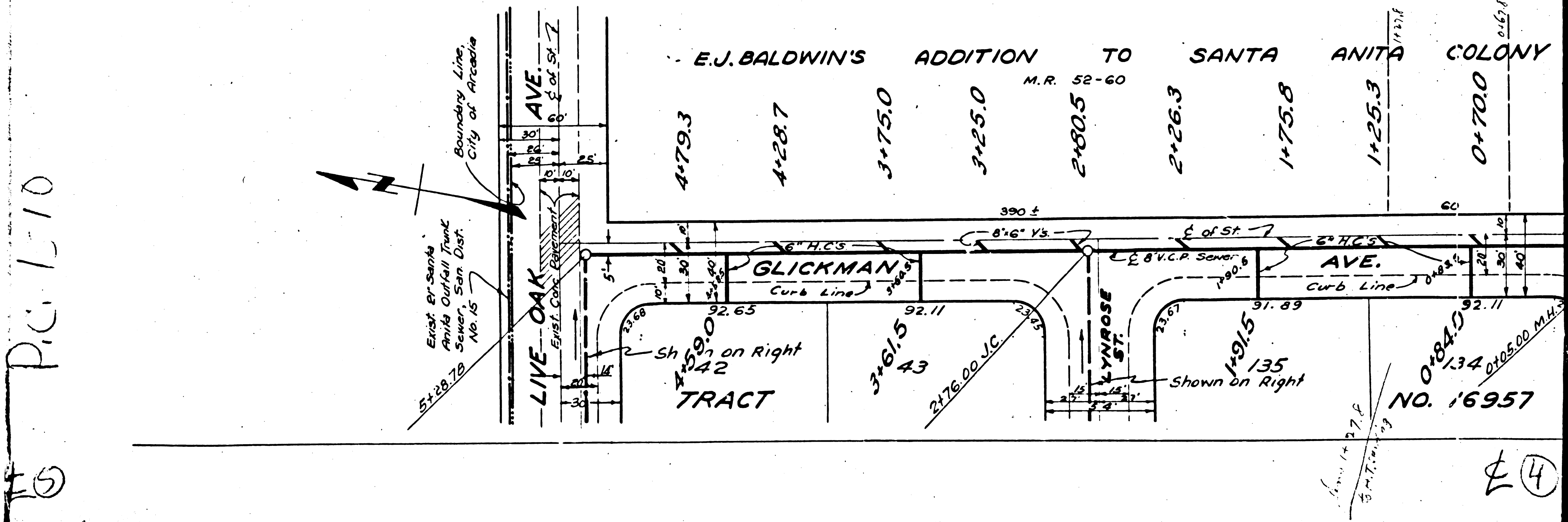
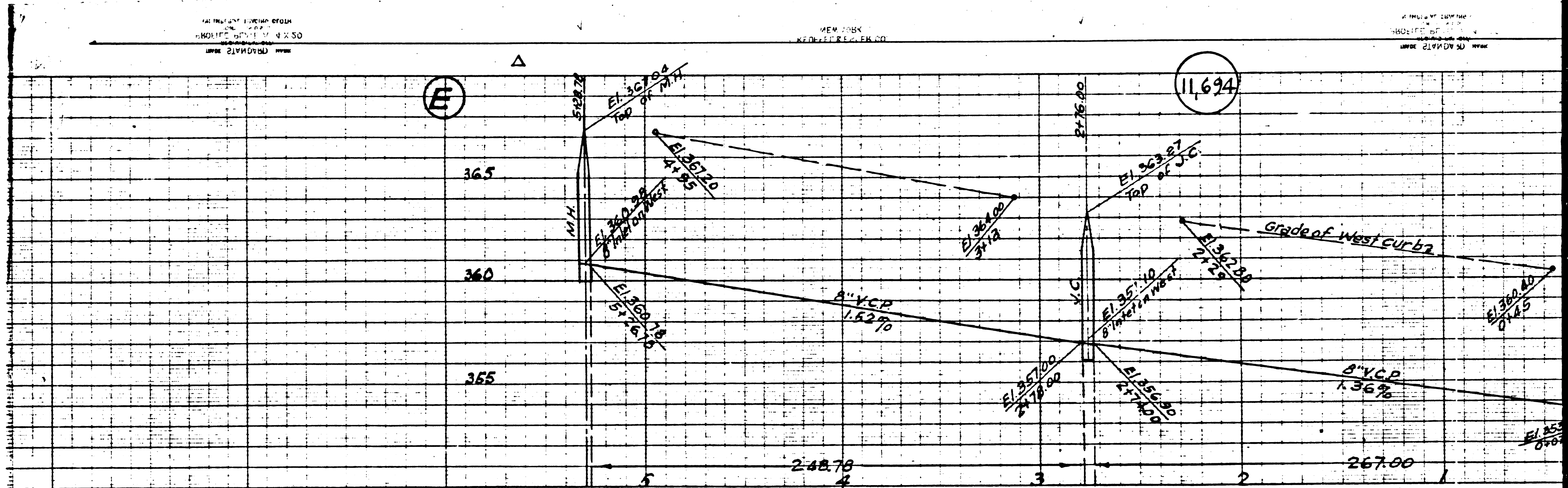


③









P.C. 1510