

NO STANDARD MANHOLE FRAMES AND COVERS, 2-1/2' DIA.
 1. USE STANDARD PRESTRESSITE (EXCEPT AS NOTED).
 2. THE LIGHTS SHOULD BE THE TYPE APPROVED BY THE COUNTY ENGINEER.
 3. PROVIDE ALL TRUNK WITHIN PAVED AREAS TO MEET LOS ANGELES COUNTY ROAD DEPARTMENT'S REQUIREMENTS.
 4. CONTINUED HOUSE CONNECTIONS WITHIN PROPERTY LINES TO THE CURB LINE SHALL BE MADE (EXCEPT AS NOTED).
 5. HOUSES SHALL BE KEPT AT POINTS OF INTERFERENCE WITH PIPES.
 6. ALL STRUCTURES SHALL BE REINFORCED STRUCTURES 12-18" EXCEPT AS NOTED.
 7. CONSTRUCTION SHALL BE IN ACCORDANCE WITH THE LATEST EDITIONS OF THE STANDARD SPECIFICATIONS FOR HIGHWAY AND TRAIL CONSTRUCTION.

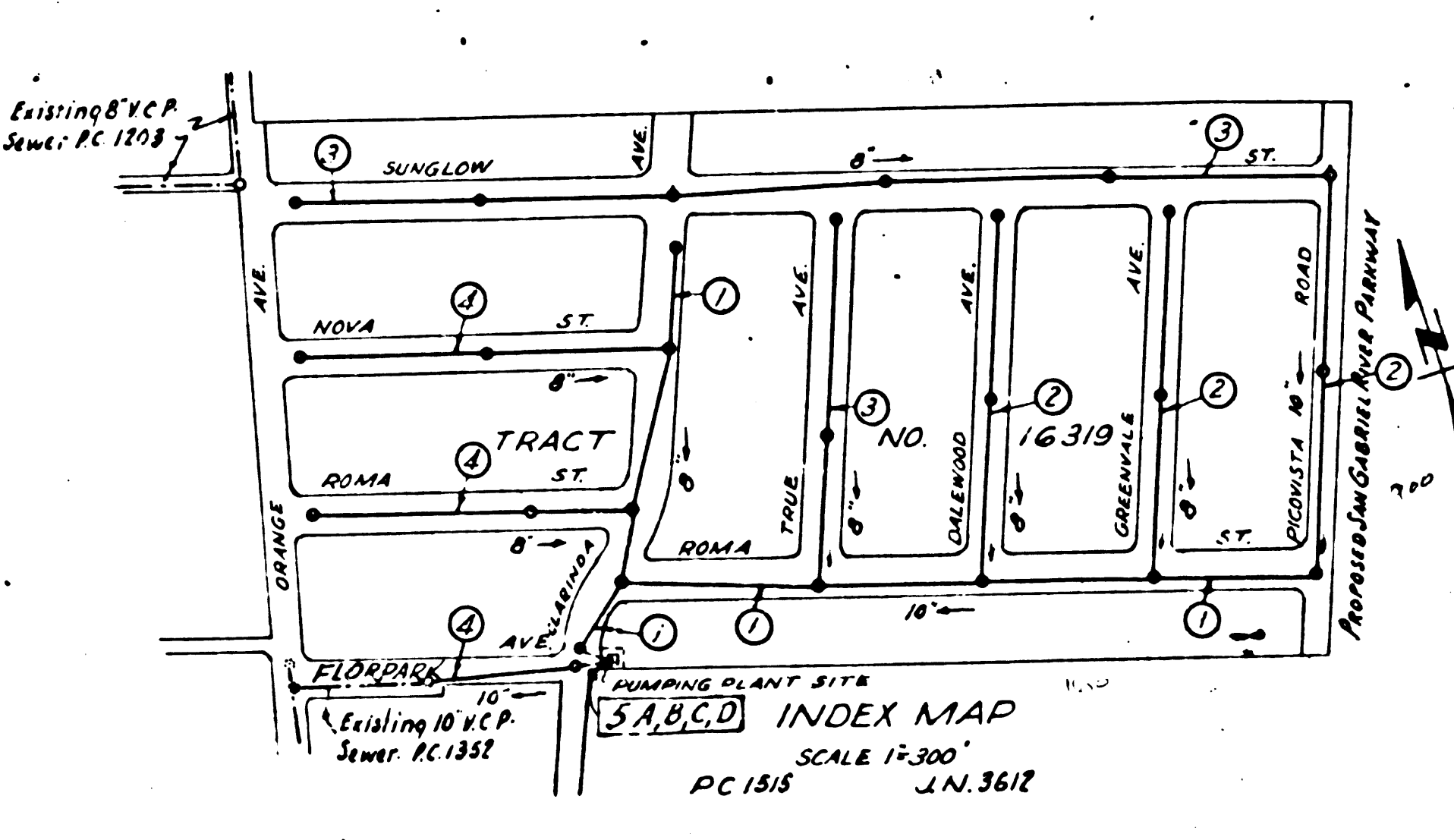
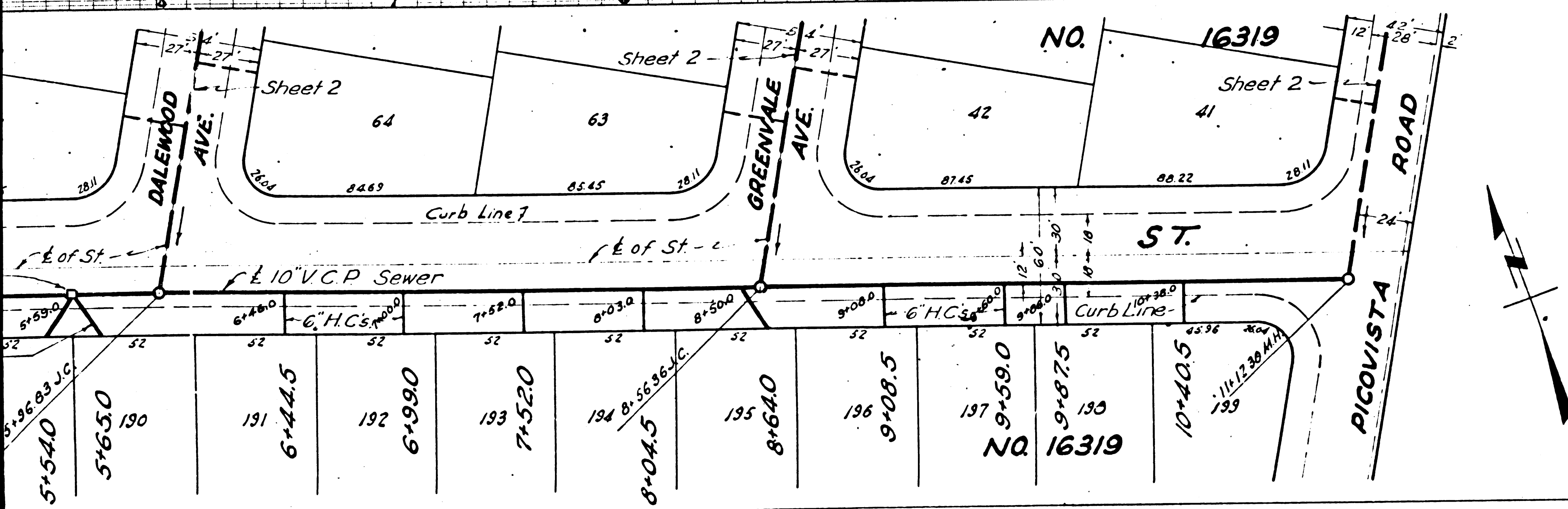
BASE NO. SY 1349 LOT 1 and Or. and Day Road, 23 1/2' S. of the E. of Anaheim Telegraph Rd.
 Elev. 135.123 per County
 135.793 Elev.
 6.58 DIA.
 All elevations shown herein are 6.58' high.

NO REPRESENTATIVE OF THE COUNTY ENGINEER WILL SURVEY OR LOCATE ANY PORTION OF THE WORK.
 THE OWNER OR HIS AUTHORIZED REPRESENTATIVE SHALL FURNISH THE COUNTY ENGINEER WITH GRADE SHEETS AND ELEVATIONS OF ALL WORKS COMMENCED AND SHALL MAINTAIN AND SHALL PROVIDE STAKES FOR THEM AT THEIR PROPER LOCATIONS WITH STATIONING PLAINLY MARKED AND CHANGE IN LOCATION SHALL BE REPORTED IMMEDIATELY TO THE COUNTY ENGINEER.
 PROTECT STAKES ON THE PROPERTY LINES OR PROPERTY LINES NEARBY.
 NO CHANGES SHALL BE MADE IN THESE PLANS WITHOUT APPROVAL OF THE COUNTY ENGINEER.

DOUGLAS SCALE

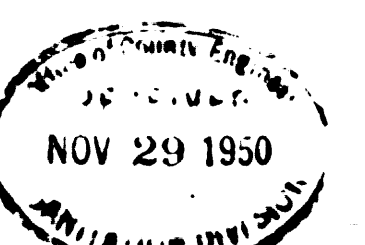
PROFILE ALIGNMENT AND GRADE OF
SANITARY SEWERS
 TO BE CONSTRUCTED IN
ROMA STREET
 BETWEEN CLARINDA AVE. & PICOVISTA ROAD
CLARINDA AVENUE
 BETWEEN FLOPPY AVE. & SUNGLOW ST.

TRACT UP 16319
 PRIVATE CONTRACT No. 1515
 W.S. 88236
SHEET 1 OF 5 SHEETS
 PREPARED IN THE OFFICES OF
KARL F TUTTLE
 R.E. 2000



FOR LEGEND
 NOTE: GRADES TO WHICH THE WORK IS TO BE CONSTRUCTED ARE SHOWN ON PLANS AND PROFILES.
 GRADE OR POINTS FOR TOP OF CURB, CENTER LINE OF STREET OR CENTER LINE OF ALLEY ARE SHOWN BY CIRCLES OR SQUARES AT ALL POINTS BETWEEN THE STRAIGHT LINES AND BY TRIANGLES AT INTERSECTIONS.
 ELEVATIONS ARE IN FEET ABOVE U.S. LATITUDE OR MEAN SEA LEVEL.
 THIS DRAWING AND THE DATA HEREON ARE HEREBY MADE A PART OF THE SPECIFICATIONS.
 WORK SHALL BE CONSTRUCTED ACCORDING TO SPECIFICATIONS ON FILE IN THE OFFICE OF THE COUNTY ENGINEER AND SHALL BE PROSECUTED ONLY IN THE PRESENCE OF THE COUNTY ENGINEER.
 BEFORE WORK CAN BE STARTED THE CONTRACTOR MUST OBTAIN A PERMIT TO BECAVATE IN COUNTY STREETS AND THE U.S. COUNTY ROAD DEPARTMENT TO BECAVATE IN COUNTY STREETS AND THE U.S. COUNTY ROAD DEPARTMENT TO BECAVATE IN COUNTY STREETS AND THE U.S. COUNTY ROAD DEPARTMENT TO BECAVATE IN COUNTY STREETS.
 IF WORK IS TO BE DONE IN A STATE HIGHWAY A PERMIT MUST BE OBTAINED FROM THE STATE OF CALIFORNIA.
 APPROVAL OF THIS PLAN BY THE COUNTY ENGINEER DOES NOT CONSTITUTE A REPRESENTATION OF THE COUNTY ENGINEER'S OFFICE AS TO THE ACCURACY OF THE DATA HEREON OR THE RESULTS OF THE WORK THEREON.
 COUNTY OF LOS ANGELES, CALIFORNIA

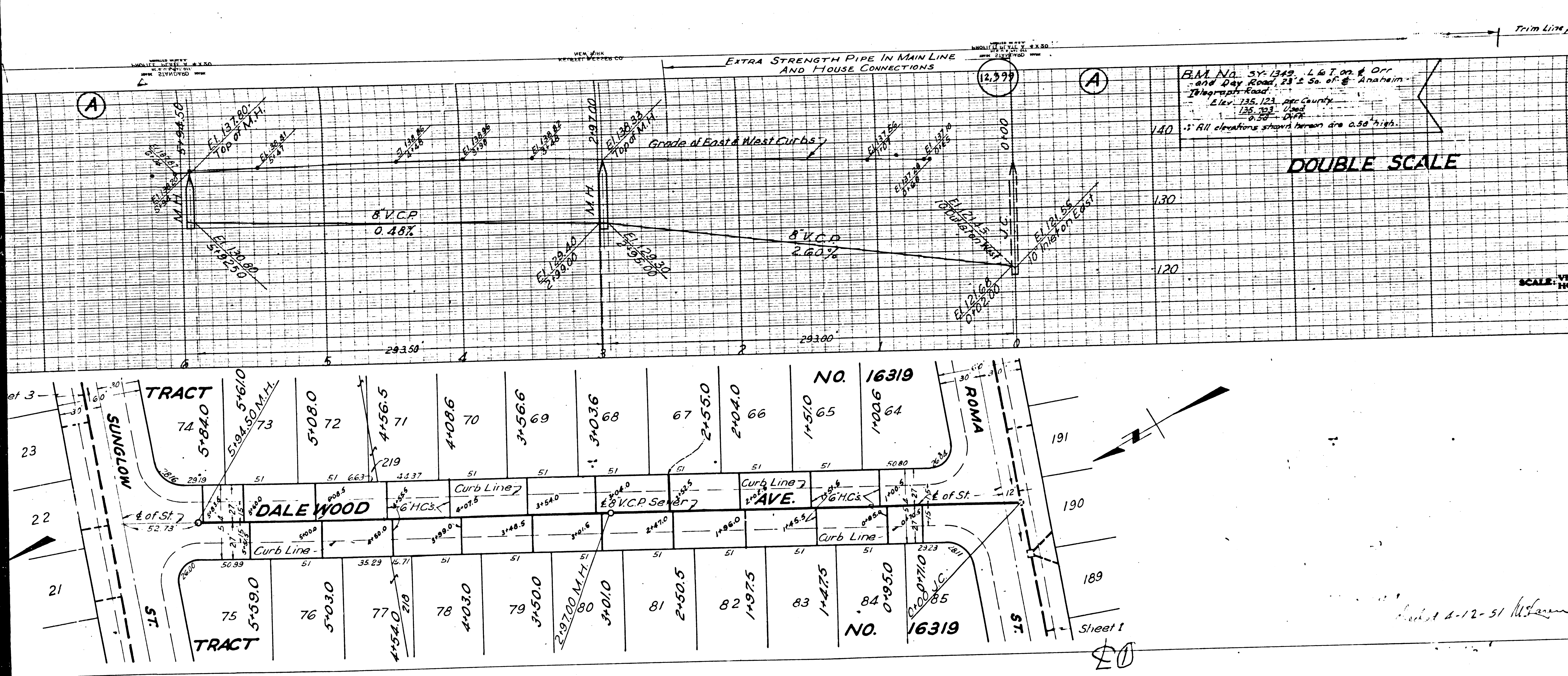
APPROVED: *Karl F Tuttle*
 COUNTY ENGINEER
 APPROVED BY: *AN DAWN*
 OFFICE ENGINEER
 CHECKED: *Richard E. ...*
 OFFICE OF COUNTY ENGINEER, 11-15-50



SHEET 1 OF 5 SHEETS

checked 4-12-51

40



PROFILE ALIGNMENT AND GRADE OF
SANITARY SEWERS
 TO BE CONSTRUCTED IN
DALEWOOD AVENUE
 BETWEEN ROMA ST. & SUNGLOW ST.
GREENVALE AVENUE
 BETWEEN ROMA ST. & SUNGLOW ST.
PICOVISTA ROAD
 BETWEEN ROMA ST. & SUNGLOW ST.
 TRACT NO. 16319

PRIVATE CONTRACT No. 1515
 W. S. 33236

SHEET 2 OF 5 SHEETS

PREPARED IN THE OFFICES OF
KARL TUTTLE
Karl Tuttle
 R.E. 2000

FOR CONSTRUCTION NOTES
 SEE SHEET 1

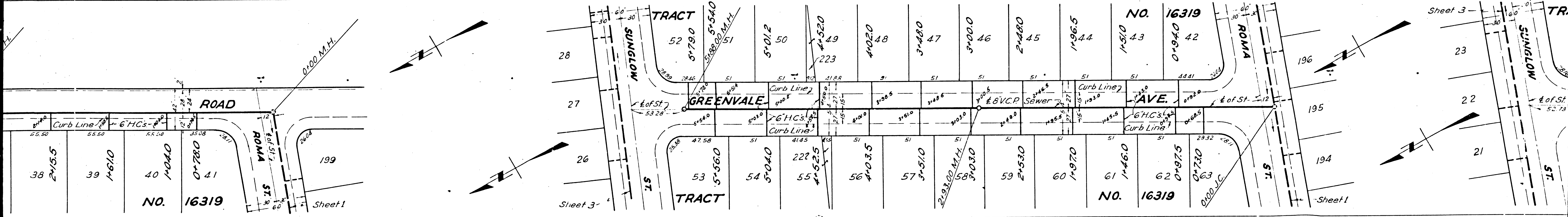
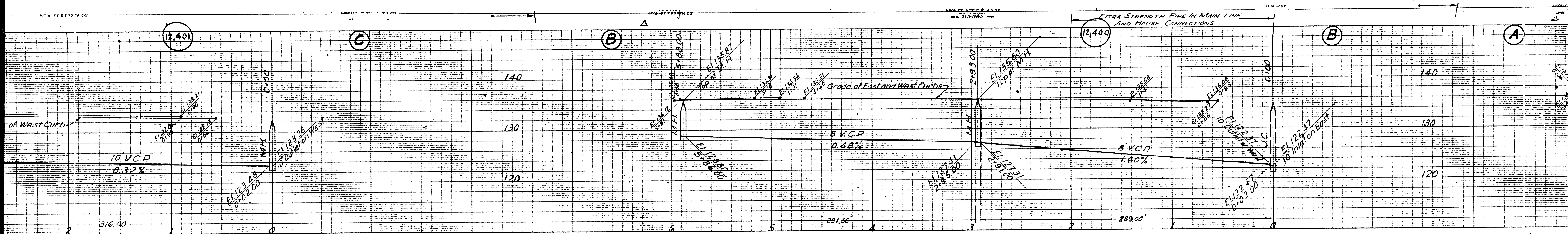
COUNTY OF LOS ANGELES, CALIFORNIA

APPROVED: *[Signature]*
 COUNTY ENGINEER

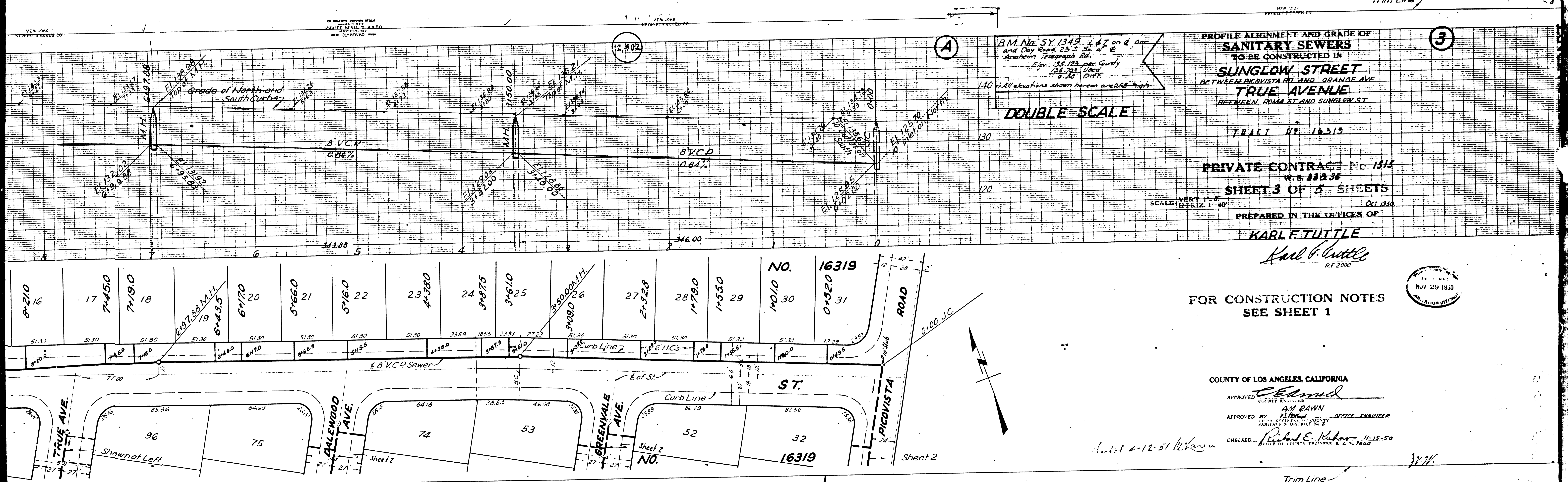
APPROVED BY: *[Signature]*
 CHIEF ENGINEER OF COUNTY
 SANITARIUM DISTRICT No. 2 OFFICE ENGINEER

CHECKED: *[Signature]*
 OFFICE OF COUNTY ENGINEER, L. E. # 17900

SHEET 5 OF 2 SHEETS



②



B.M. No. 57 1349 1.47 on d. line
and Day Book 23 S. 54 of C
Anahem. Topograph Bk.
Elev. 135.123 over Gusty
135.703 Used
0.58' DIFF

PROFILE ALIGNMENT AND GRADE OF
SANITARY SEWERS
TO BE CONSTRUCTED IN
SUN GLOW STREET
BETWEEN PICO VISTA RD AND ORANGE AVE
TRUE AVENUE
BETWEEN ROMA ST AND SUN GLOW ST

TRACT NO. 16315

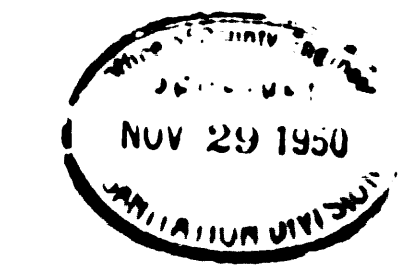
PRIVATE CONTRACT NO. 1512
W.S. 88236
SHEET 3 OF 5 SHEETS

PREPARED IN THE OFFICES OF
KARL TUTTLE

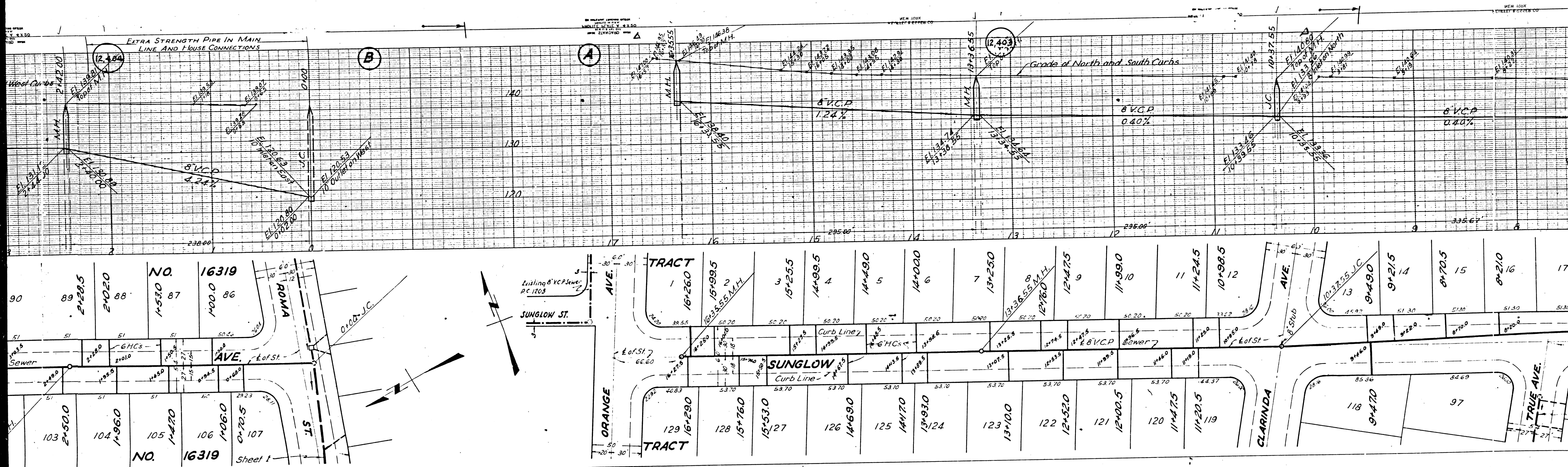
Karl Tuttle
R.E. 2000

FOR CONSTRUCTION NOTES
SEE SHEET 1

COUNTY OF LOS ANGELES, CALIFORNIA
APPROVED *Edmond*
COUNTY ENGINEER
APPROVED BY *AM RAWN*
OFFICE ENGINEER
CHECKED *Richard E. Kahan* 11-15-50
DATE 4-12-51



Trim Line



EXTRA STRENGTH PIPE IN MAIN LINE AND HOUSE CONNECTIONS

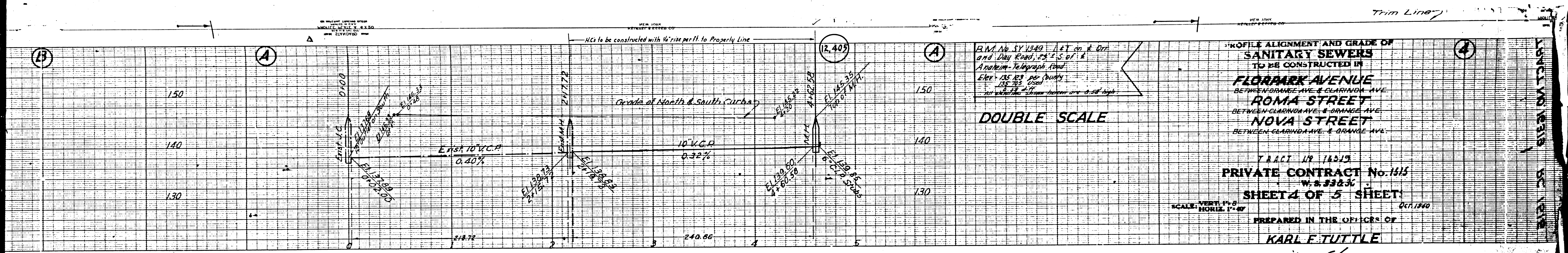
Grade of North and South Curbs

NO. 16319

NO. 16319

Sheet 1

20



B.M. No. SY 1349 1 ft on R. Orr
and Day Road, 28' 2.5' of 1' 6"
Anaheim-Telegraph Road.
Elev. 135.83 per survey
135.703 used
1' 6" above ground surface
no vertical curve between manholes

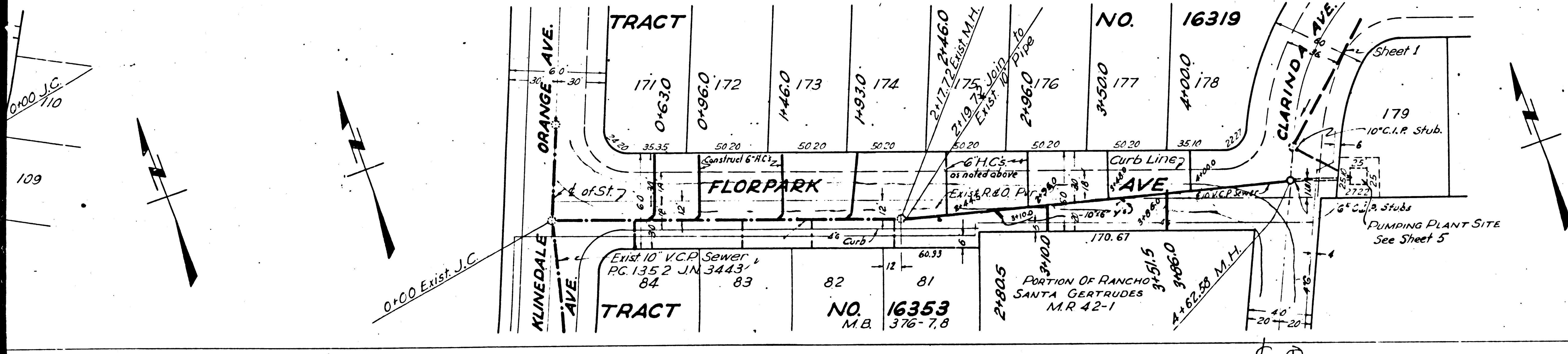
DOUBLE SCALE

**PROFILE ALIGNMENT AND GRADE OF
SANITARY SEWERS
TO BE CONSTRUCTED IN
FLORPARK AVENUE
BETWEEN ORANGE AVE. & CLARINDA AVE.
ROMA STREET
BETWEEN CLARINDA AVE. & ORANGE AVE.
NOVA STREET
BETWEEN CLARINDA AVE. & ORANGE AVE.**

TRACT 149 16319
PRIVATE CONTRACT No. 1515
W.S. 3383
SHEET 4 OF 5 SHEETS

SCALE: VERT. 1" = 8'
HORIZ. 1" = 40'

PREPARED IN THE OFFICES OF
KARL F. TUTTLE



Karl F. Tuttle
R.E. 2000

**FOR CONSTRUCTION NOTES
SEE SHEET 1**

COUNTY OF LOS ANGELES, CALIFORNIA

APPROVED: *[Signature]*
COUNTY ENGINEER

APPROVED BY: *[Signature]*
SANITATION DISTRICT NO. 2

CHECKED: *[Signature]* 11-15-50
OFFICE OF COUNTY ENGINEER, S. E. 14, 1920

Check 4-12-51 *[Signature]*

[Signature]

SHEET 4 OF 5 SHEETS

