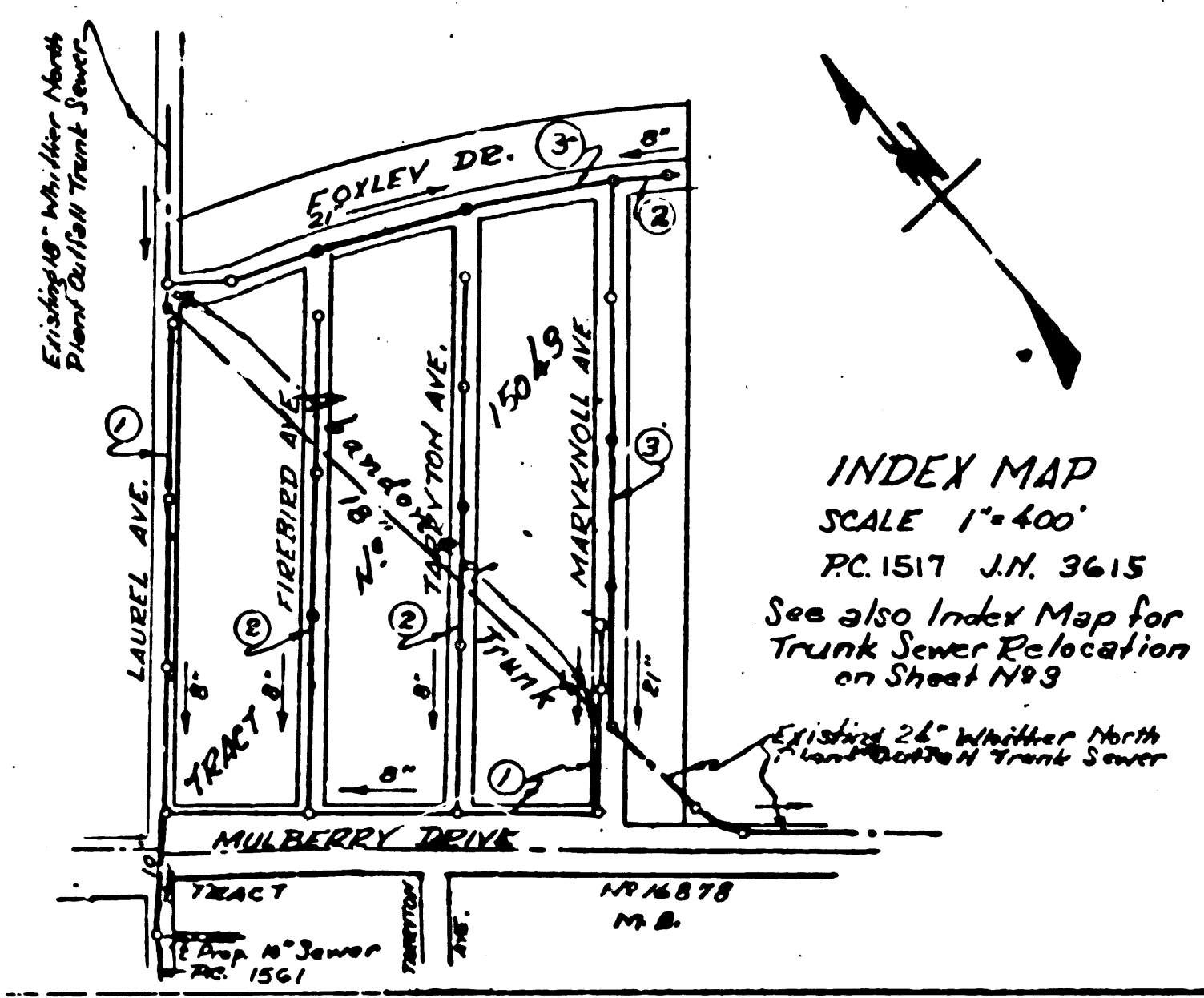


(13,035)	STANDARD STRENGTH PIPE EXCEPT AS NOTED
	USE CONCRETE MORTAR FOR ALL VITRIFIED CLAY PIPE JOINTS
	ENGAGE FOUR FEET OF SEWER AT POINTS OF INTERFERENCE WITH POLES AS PER SPEC.
	CONSTRUCT HOUSE CONNECTIONS WITH INSET AT PROFILES 6 FEET BELOW CURB GRADE EXCEPT AS NOTED
	ALL STRUCTURES SHALL BE BRICK SEWER STRUCTURES AS PER PLAN NO. 1517 FOR EXISTING WORK
	USE STANDARD MANHOLE FRAMES AND COVERS AS PER PLAN NO. 1517 EXCEPT AS NOTED
	CONSTRUCT TOPS OF ALL STRUCTURES IN RIGHTS OF WAY IN FINISHED GRADE
	RESURFACE ALL TRENCHES WITHIN PAVED AREA TO MEET LOS ANGELES COUNTY ROAD DEPT. OR STATE HIGHWAY REQUIREMENTS IN UNPAVED AREAS WITHIN RIGHTS OF WAY
	PROVIDE STAKES ON THE PROPERTY LINES OR PROPERTY LINES PRODUCED AT RIGHT ANGLES TO THE SEWER LINE AT THE CENTER LINE OF EACH MANHOLE
	NO REVISIONS SHALL BE MADE IN THESE PLANS WITHOUT APPROVAL OF THE COUNTY ENGINEER
	NO REPRESENTATIVE OF THE COUNTY ENGINEER WILL SURVEY OR LAY OUT ANY PORTION OF THE WORK
	THE OWNER OR HIS AUTHORIZED REPRESENTATIVE SHALL FURNISH THE COUNTY ENGINEER WITH GRADE SHEETS AND STATIONS OF ALL HOUSE CONNECTIONS AND T-BRANCHES AND SHALL PROVIDE STAKES FOR THEM AT THEIR PROPER LOCATIONS WITH STATIONING PLAINLY MARKED
	ANY CHANGE OF LOCATION SHALL BE REQUESTED IN WRITING BY THE OWNER OR HIS REPRESENTATIVE



PROFILE ALIGNMENT AND GRADE OF
SANITARY SEWERS
 TO BE CONSTRUCTED IN
 TRACT NO 15043
 ON
MULBERRY DRIVE
 BETWEEN LAUREL AVE. & MARYKNOLL AVE.
LAUREL AVE.
 BETWEEN MULBERRY DRIVE & FOXLEY DR.
MARYKNOLL AVE.
 BETWEEN MULBERRY DRIVE & 4 FT. 500 FT. WEST OF FOXLEY

PRIVATE CONTRACT NO. 1517
 W. 5.34

SHEET 1 OF 3 SHEETS

SCALE: VERT. 1"=4' HORIZ. 1"=40'

SEPT. 7, 1950

PREPARED IN THE OFFICES OF
KEMMERER ENG. CO.
 BY: *J. H. Kemmerer*
 REG. C. E. NO. 172

FOR LEGEND
 SEE PLAN NO. 1517

NOV 22 1950

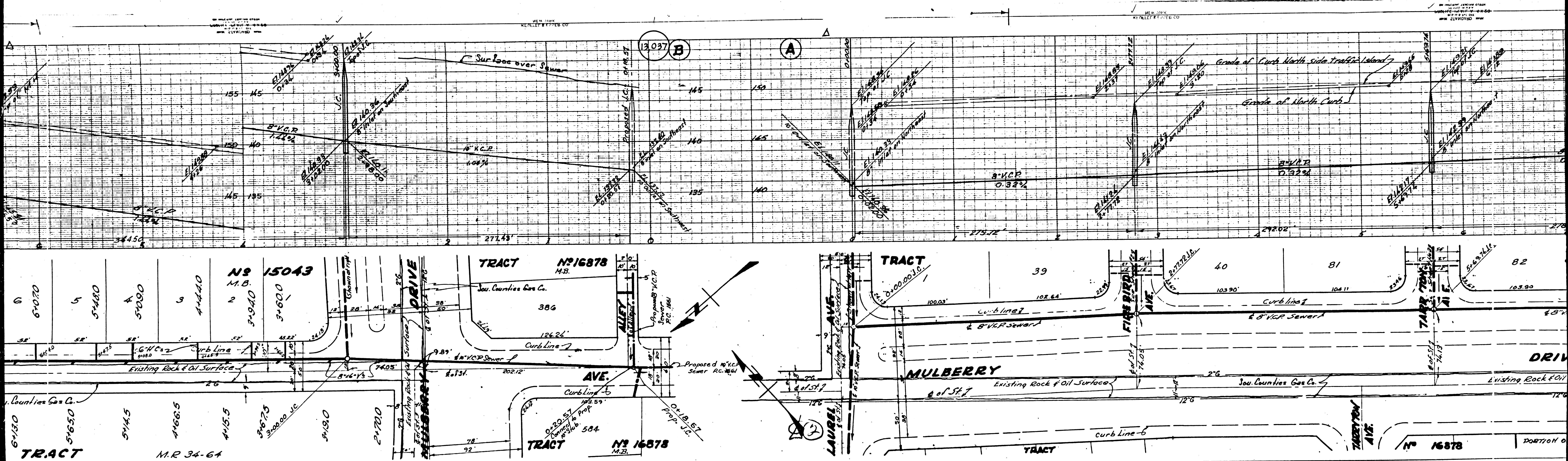
NOTE:
 GRADES TO WHICH THIS IMPROVEMENT IS TO BE CONSTRUCTED ARE SHOWN ON PLAN AND PROFILE UNLESS ON PROFILE AT ALL POINTS BETWEEN DESIGNATED POINTS THE GRADE SHALL BE ESTABLISHED SO AS TO CONFORM TO A STRAIGHT LINE DRAWN BETWEEN SAID DESIGNATED POINTS.
 ELEVATIONS ARE IN FEET ABOVE U. S. S. DATUM OR MEAN SEA LEVEL.
 THIS DRAWING AND THE DATA HEREON ARE HEREBY MADE A PART OF THE SPECIFICATIONS.
 WORK SHALL BE CONSTRUCTED ACCORDING TO SPECIFICATIONS ON FILE IN THE OFFICE OF COUNTY ENGINEER AND SHALL BE PROSECUTED ONLY IN THE PRESENCE OF THE COUNTY ENGINEER.
 BEFORE WORK CAN BE STARTED, THE CONTRACTOR MUST OBTAIN A PERMIT TO EXCAVATE COUNTY STREETS FROM THE L. A. COUNTY ROAD DEPT. 211 SOLOMIST BLDG. ANGELES AND MAKE A DEP. WITH THE COUNTY ENGINEER ROOM 830 AT 108 W 4TH STREET, SUFFICIENT TO COVER THE COST OF CONSTRUCTION INSPECTION AND RECORD PLANS.
 IF WORK IS TO BE DONE IN A STATE HIGHWAY, A PERMIT MUST BE OBTAINED FROM THE ST. OF CALIFORNIA, DIVISION OF HIGHWAYS, 808 STATE BUILDING, AFTER MAKING THE DEPOSIT WITH COUNTY ENGINEER.

COUNTY OF LOS ANGELES, CALIFORNIA

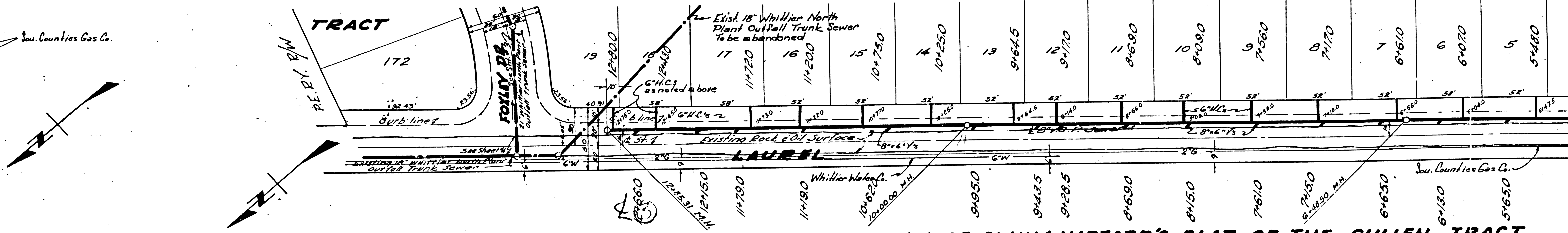
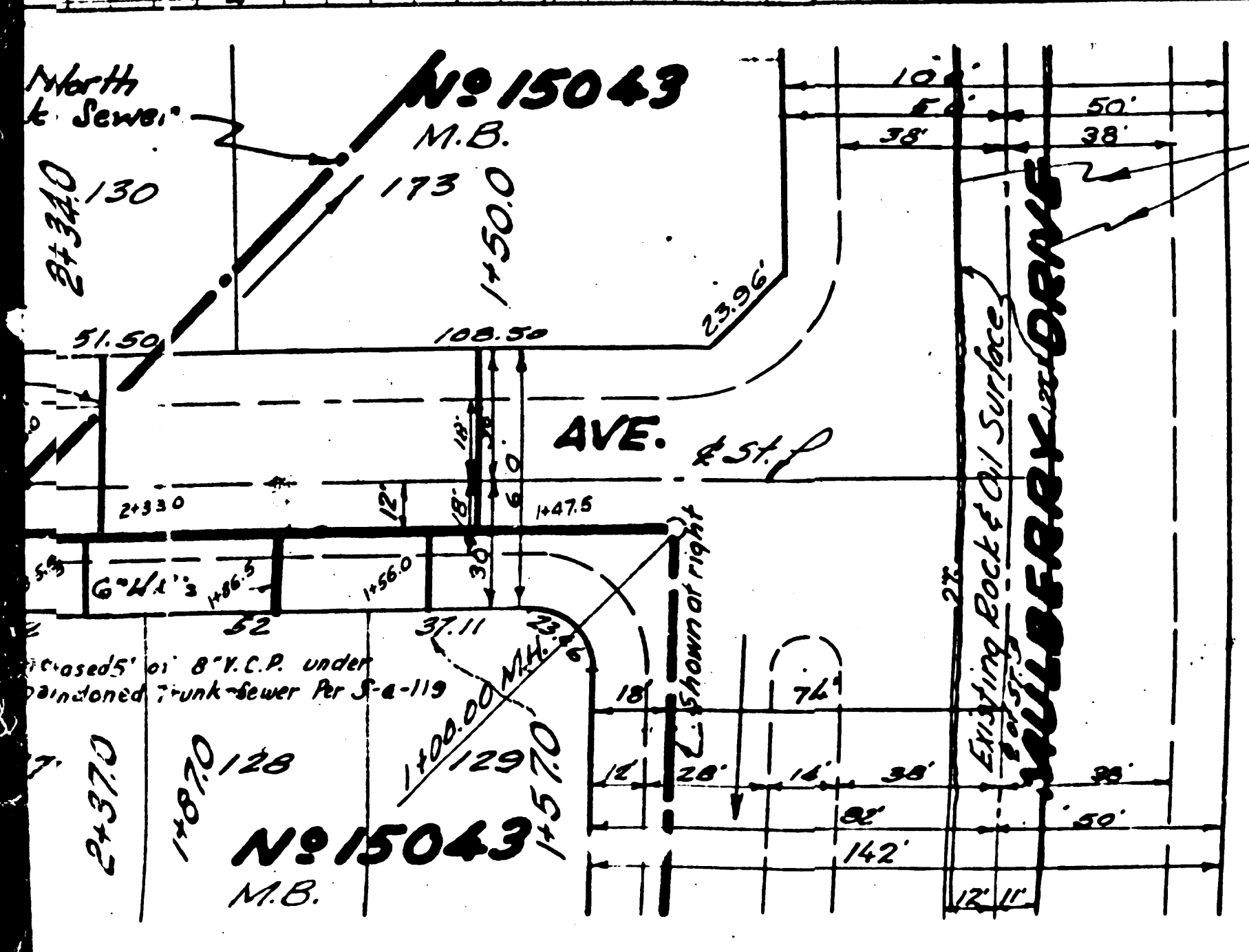
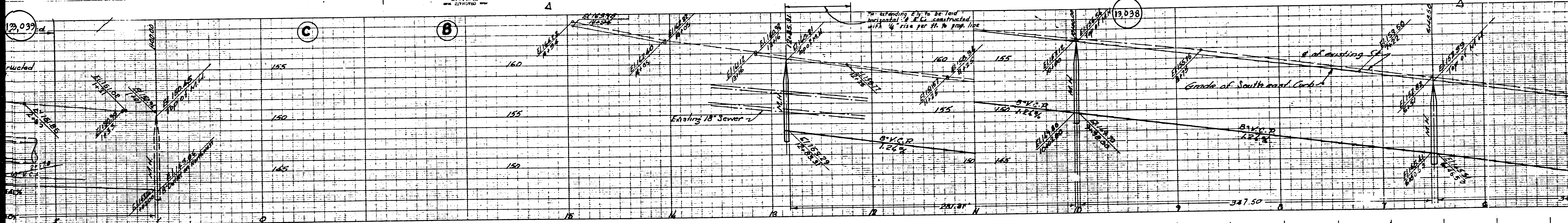
APPROVED: *J. H. Kemmerer* COUNTY ENGINEER

APPROVED: *J. H. Kemmerer* CHIEF ENGINEER OF COUNTY SANITATION DIST. NO. 18

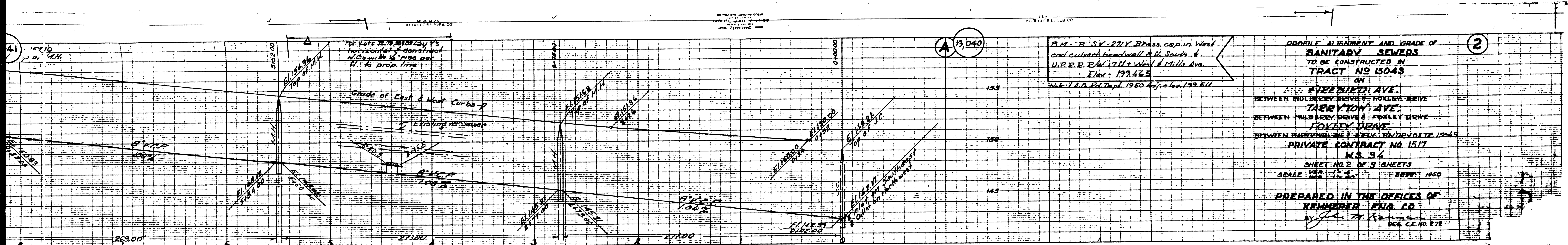
CHECKED BY: *Robert E. Fisher* 11-15 OFFICE OF COUNTY ENGINEER, REG. C. E. NO. 172



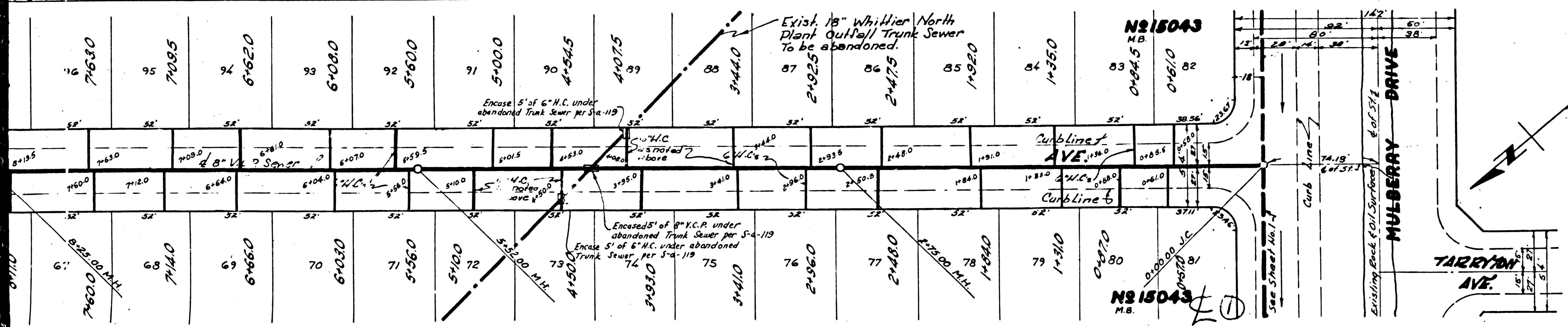
NO. 13,038
 COUNTY OF ...
 STATE OF ...



A PORTION OF BLOCK 13 OF A RESURVEY OF GUNN & HAZZARD'S PLAT OF THE CULLEN TRACT



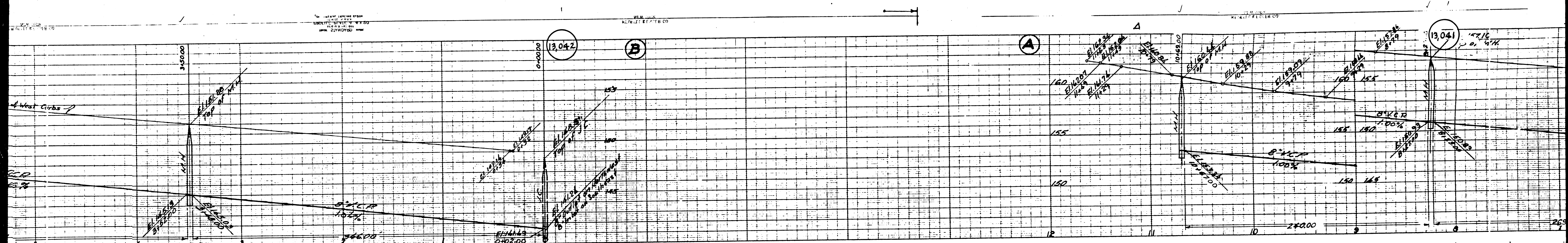
PROFILE ALIGNMENT AND GRADE OF SANITARY SEWERS TO BE CONSTRUCTED IN TRACT NS 15043 ON FIRESTONE AVE. BETWEEN MULBERRY DRIVE & FOXLEY DRIVE TARRYTON AVE. BETWEEN MULBERRY DRIVE & FOXLEY DRIVE FOXLEY DRIVE BETWEEN HARKINS AVE & EVELY BLDG. SITE 15043 PRIVATE CONTRACT NO. 1517 W.S. 94 SHEET NO. 2 OF 3 SHEETS SCALE VERT. 1" = 4' HOR. 1" = 20' SURV. 1950 PREPARED IN THE OFFICES OF KEMMERER ENG. CO. BY J. H. KEMMERER REG. C.E. NO. 878

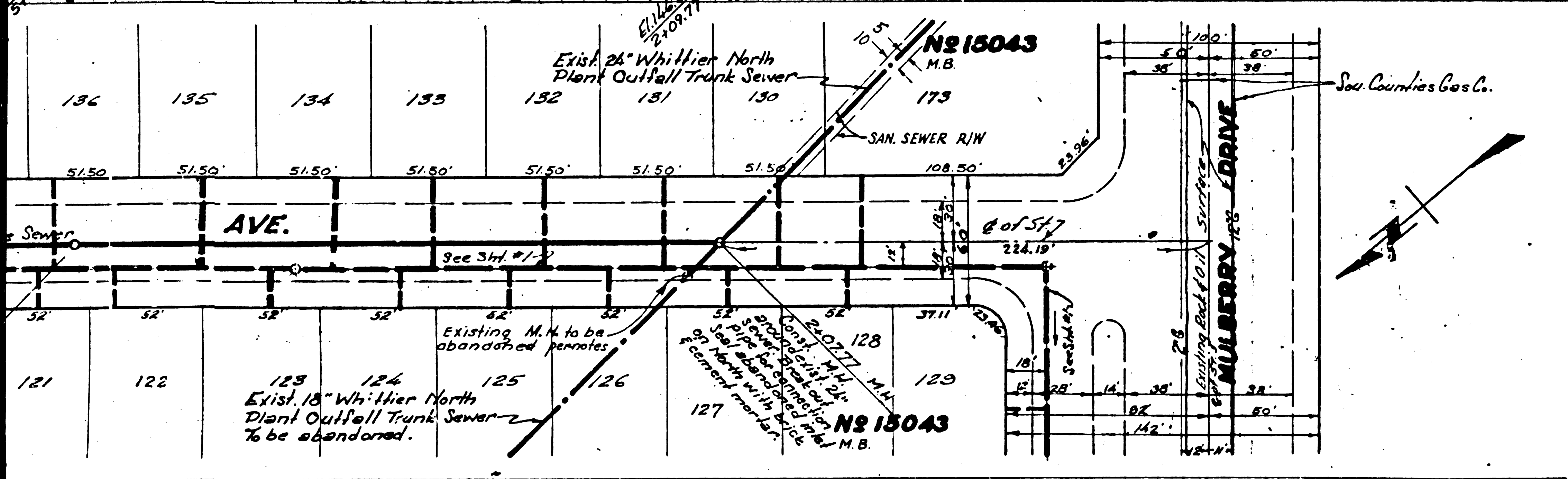
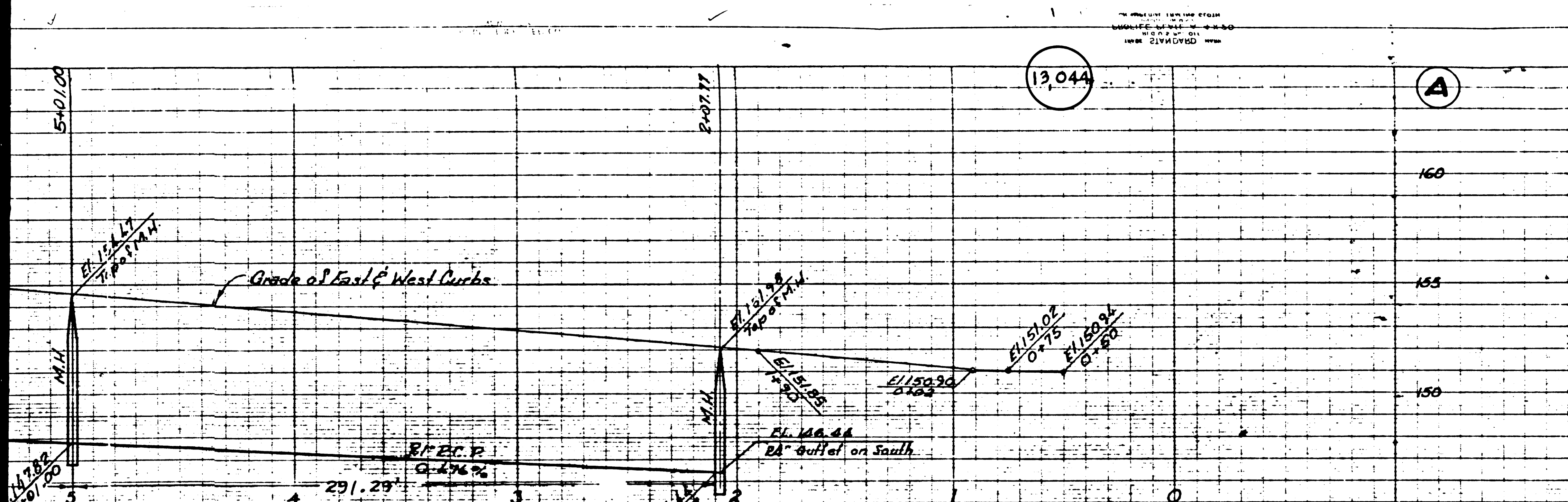


For Legend See Plan No. 3-a-66 See Sheet No. 1 for Construction Notes.

COUNTY OF LOS ANGELES, CALIFORNIA
 APPROVED *Edmund*
 COUNTY ENGINEER
 AM RAVIN
 APPROVED BY *J. H. Kemmerer*
 CHIEF ENGINEER
 SANITATION DISTRICT NO. 18
 CHECKED BY *Richard E. Roberts* 11-13-50
 OFFICE OF COUNTY ENGINEER
 REG. C.E. NO. 7860

SEE PLAN NO. 3-A-66
 SHEET NO. 2 OF 3 SHEETS
 11-13-50
 710017





<p>B.M. "B" SY. 2717 Brass cap in West end of back hand wall 8 ft. South of U.R.P. 24117 West of Mills Ave. Elev. 179.445</p> <p>Note: I.A.C. Bd. Dept. 1950 July, Elev. 199.511</p> <p>ADDITIONAL CONSTRUCTION NOTES- For 21" and 24" R.C. PIPE TRUNK SEWER</p> <p>ALL STRUCTURES SHALL BE BRICK SEWER STRUCTURES AS PER S-2-61 and S-2-57 EXCEPT AS NOTED.</p> <p>USE STANDARD MANHOLE FRAMES AND COVERS AS PER S-2-58. TOP TO READ "S.D. N° 18"</p> <p>BEFORE BREAKING INTO ANY EXISTING STRUCTURE AND BEFORE FINAL ACCEPTANCE OF THIS WORK, COUNTY SANITATION DISTRICT SHOULD BE NOTIFIED IN ORDER THAT REQUIRED INSPECTION MAY BE MADE.</p>	<p>PROFILE ALIGNMENT AND GRADE OF SANITARY SEWERS TO BE CONSTRUCTED IN TRACT N° 15043</p> <p>RELOCATION OF WHITTIER NORTH PLANT OUTFALL TRUNK SEWER ON EDLEY DRIVE BETWEEN LAUREL AVE. AND MARYKNOLL AVE.; MARYKNOLL AVE. BETWEEN EDLEY DRIVE AND A POINT 200 FT. NORTHEAST OF MULBERRY DRIVE.</p> <p>PRIVATE CONTRACT N° 1517 V. 3. 34</p> <p>SHEET N° 3 OF 3 SHEETS SCALE HOR. 1" = 40' AUGUST, 1950</p> <p>PREPARED IN THE OFFICE OF KEMMERER ENG. CO. INC. BY <i>John M. Kemmerer</i> REG. C.E. N° 277</p>
---	---

FOR LEGEND SEE PLAN S-2-64
SEE SHEET N° 1 FOR CONSTRUCTION NOTES

Trunk Sewer Abandonment Notes:

- Exist. M.H.'s to be abandoned and back filled with earth. Manhole Frames & Covers to be sealed.
- Seal all abandoned openings with brick and cement mortar.

INDEX MAP
TRUNK SEWER RELOCATION
SCALE: 1" = 400'
P.C. 1517 J.M. 3615
See also Index Map on Sheet #1

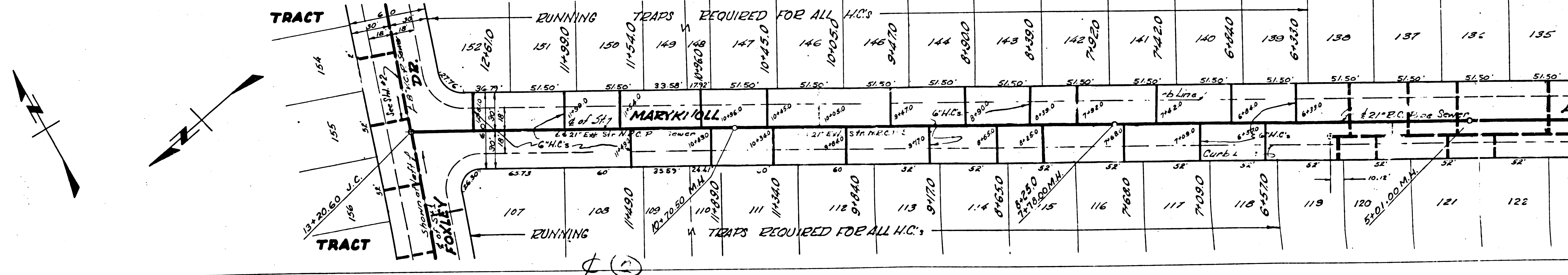
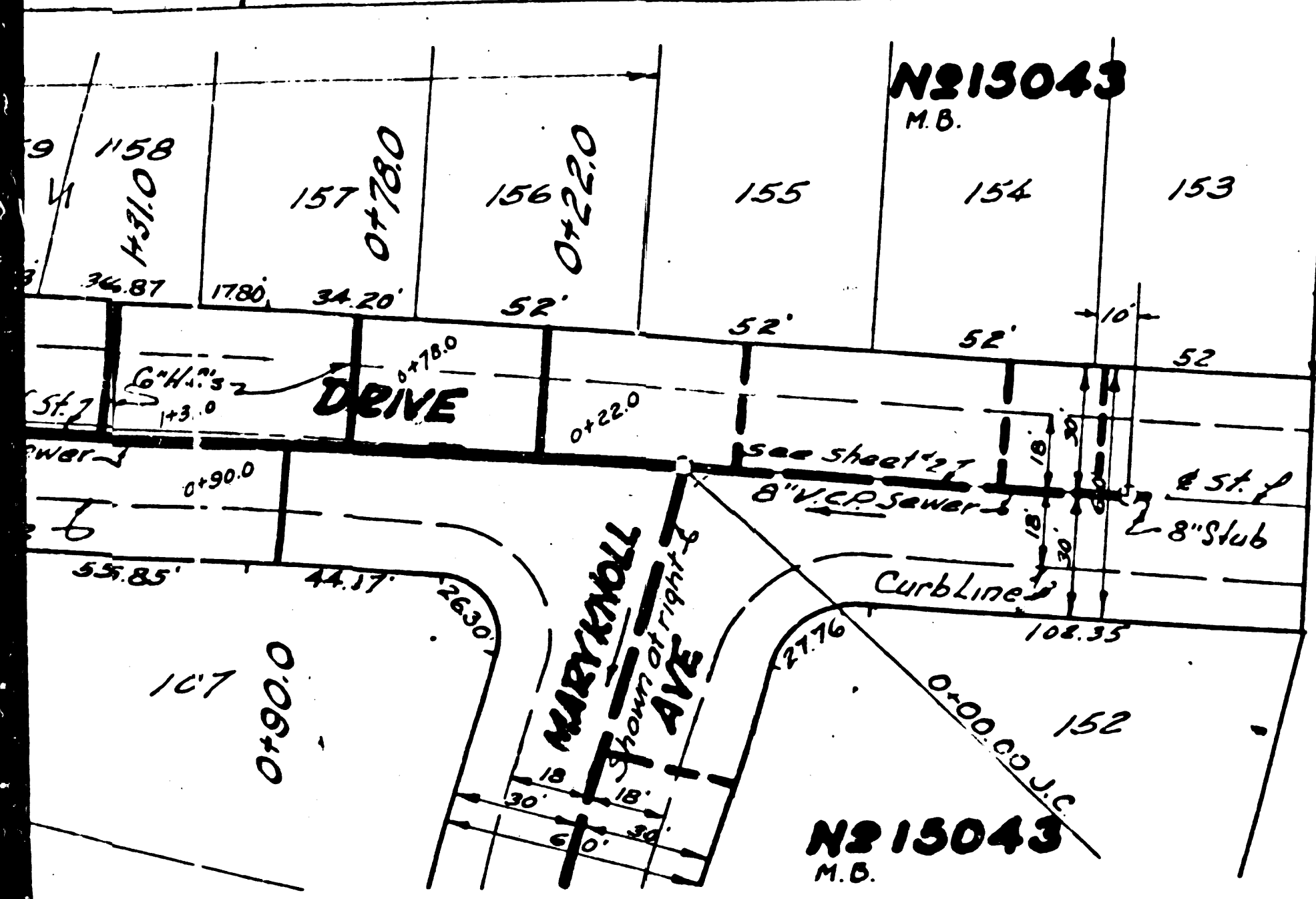
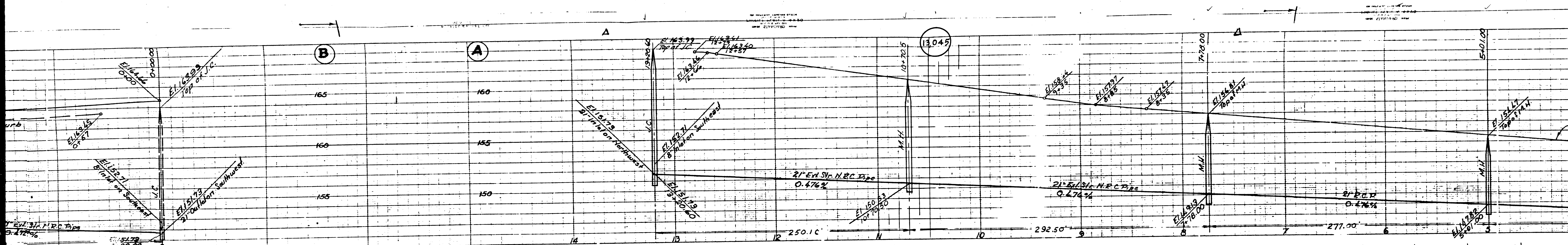
COUNTY OF LOS ANGELES, CALIFORNIA

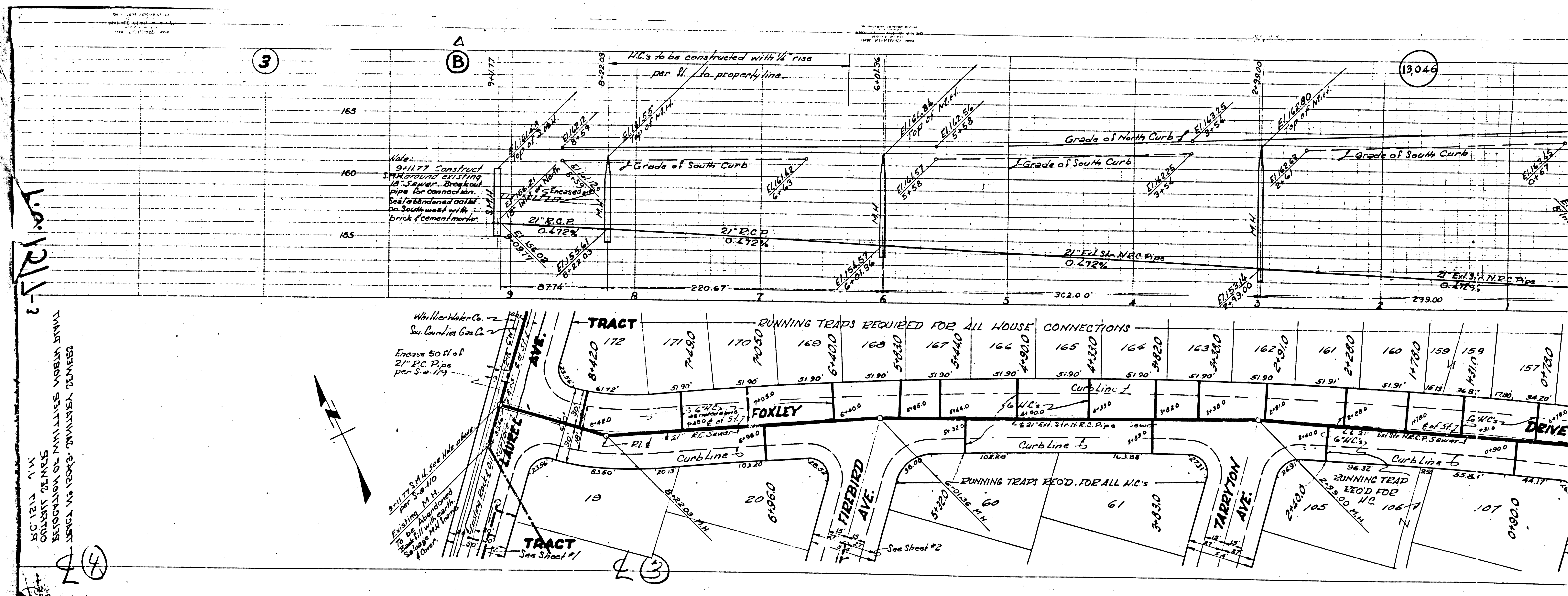
APPROVED *[Signature]*
COUNTY ENGINEER
AMRAWN

APPROVED BY *[Signature]*
CHIEF ENGINEER
SANITATION DISTRICT N° 18

CHECKED BY *Robert E. Kular* 11-13-50
OFFICE OF COUNTY ENGINEER
REG. C.E. N° 7860

NOV 22 1950





13046
 13046

H.C. 1233 A.V.
 COUNTY CLERK
 REGISTRATION OF INSTRUMENTS
 13046 VS 13043-13045-13046

3

B

13046

