

USE STANDARD STRENGTH PIPE EXCEPT AS NOTED.
 USE CEMENT MORTAR FOR ALL VITRIFIED CLAY PIPE JOINTS.
 ENCASE FOUR FEET OF SEWER AT POINTS OF INTERFERENCE WITH POLES AS PER S-119.
 CONSTRUCT HOUSE CONNECTIONS WITH INVERT AT PROP. LINE 5 FEET BELOW CURB GRADE EXCEPT AS NOTED.
 ALL STRUCTURES SHALL BE BRICK SEWER STRUCTURES AS PER PLAN NO. S-104.
 USE STANDARD MANHOLE FRAMES AND COVERS AS PER PLAN NO. S-117.
 CONSTRUCT TOPS OF ALL STRUCTURES IN RIGHTS OF WAY 6" ABOVE FINISHED GRADE.
 RESURFACE ALL TRENCHES WITHIN PAVED AREA TO MEET LOS ANGELES COUNTY ROAD DEPT. OR STATE HIGHWAY REQUIREMENTS IN ACCORDANCE WITH PERMIT.
 PROVIDE STAKES ON THE PROPERTY LINE OR PROPERTY LINES PRODUCED AT RIGHT ANGLES TO THE SEWER LINE AT THE CENTER LINE OF EACH MANHOLE.
 NO REVISIONS SHALL BE MADE IN THESE PLANS WITHOUT APPROVAL OF THE COUNTY ENGINEER.
 NO REPRESENTATIVE OF THE COUNTY ENGINEER WILL SURVEY OR LAY OUT ANY PORTION OF THE WORK.
 THE OWNER OR HIS AUTHORIZED REPRESENTATIVE SHALL FURNISH THE COUNTY ENGINEER WITH GRADE SHEETS AND STATIONS OF ALL HOUSE CONNECTIONS AND Y BRANCHES, AND SHALL PROVIDE STAKES FOR THEM AT THEIR PROPER LOCATIONS WITH STATIONING PLAINLY MARKED. ANY CHANGE OF LOCATION SHALL BE REQUESTED IN WRITING BY THE OWNER OR HIS REPRESENTATIVE.

PROFILE ALIGNMENT AND GRADE OF
SANITARY SEWERS
 TO BE CONSTRUCTED IN
 TRACT NO. 16231
 ON
CERES AVE.
 BETWEEN CORNISHCREST RD. & REIS STREET
HOMAGE AVE.
 BETWEEN CORNISHCREST RD. & REIS STREET
SUNNYBROOK LANE
 BETWEEN CORNISHCREST RD. & REIS STREET

PRIVATE CONTRACT NO. 15:4
 W. S. 34

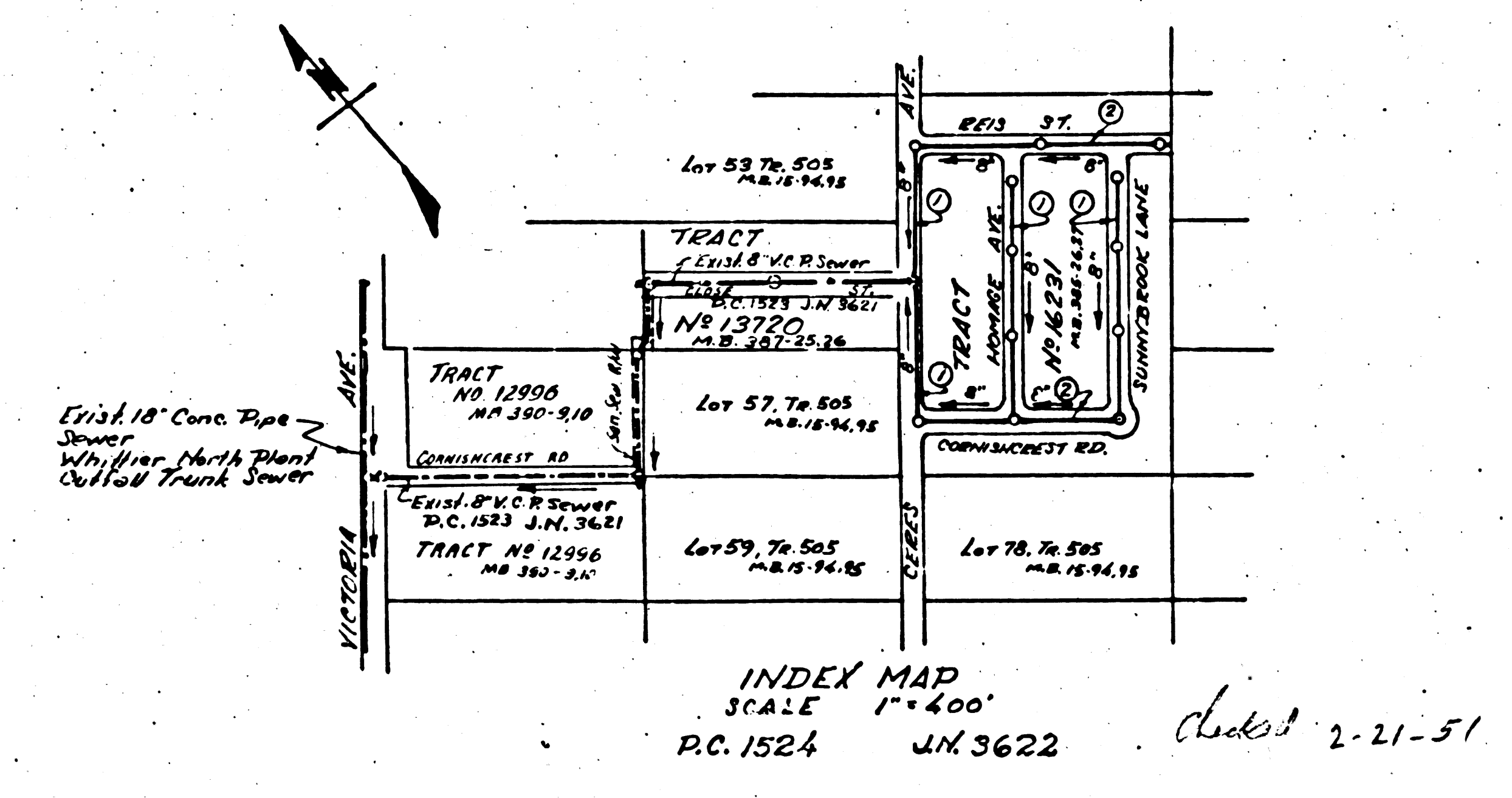
SHEET 1 OF 2 SHEETS

SCALE: VERT. 1"=40'
 HORIZ. 1"=40'

SEPT. 1950

PREPARED IN THE OFFICES OF
KEMMERER ENG. CO.
 BY *John W. Kemmerer*
 REG. C. E. NO. 272

FOR LEGEND
 SEE PLAN NO. S-84



NOTE: GRADES TO WHICH THIS IMPROVEMENT IS TO BE CONSTRUCTED ARE SHOWN ON PLANS AND PROFILES. GRADE POINTS FOR TOP OF CURB, CENTER LINE OF STREET OR CENTER LINE OF ALLEY ARE SHOWN BY DOTTED LINES ON PROFILES AT ALL POINTS BETWEEN DESIGNATED POINTS THE GRADE SHALL BE ESTABLISHED SO AS TO CONFORM TO A STRAIGHT LINE DRAWN BETWEEN SAID DESIGNATED POINTS. ELEVATIONS ARE IN FEET ABOVE U. S. & M. DATUM OR MEAN SEA LEVEL.

THIS DRAWING AND THE DATA HEREON ARE HEREBY MADE A PART OF THE SPECIFICATIONS. WORK SHALL BE CONSTRUCTED ACCORDING TO SPECIFICATIONS ON FILE IN THE OFFICE OF THE COUNTY ENGINEER AND SHALL BE PROSECUTED ONLY IN THE PRESENCE OF THE COUNTY ENGINEER. BEFORE WORK CAN BE STARTED THE CONTRACTOR MUST OBTAIN A PERMIT TO EXCAVATE IN COUNTY STREETS FROM THE L. A. COUNTY ROAD DEPT. 211 SOLMAN ST. LOS ANGELES. MAKE A DEPOSIT WITH THE COUNTY ENGINEER, ROOM 830 AT 608 N. 8TH STREET, SUFFICIENT TO COVER THE COST OF CONSTRUCTION INSPECTION AND RECORD PLANS.

IF WORK IS TO BE DONE IN A STATE HIGHWAY, A PERMIT MUST BE OBTAINED FROM THE STATE OF CALIFORNIA, DIVISION OF HIGHWAYS, 808 STATE BUILDING, AFTER MAKING THE DEPOSIT WITH THE COUNTY ENGINEER.

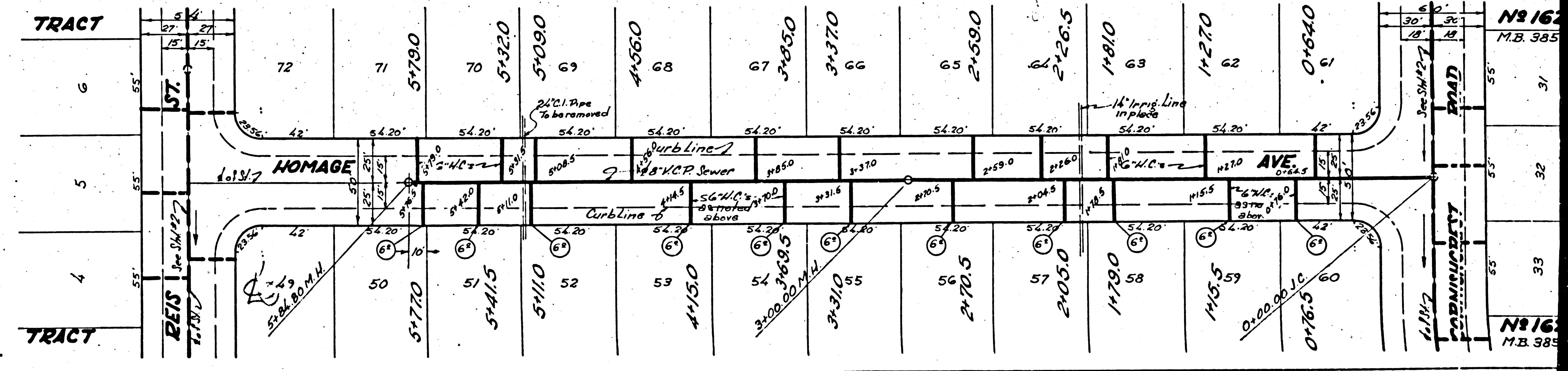
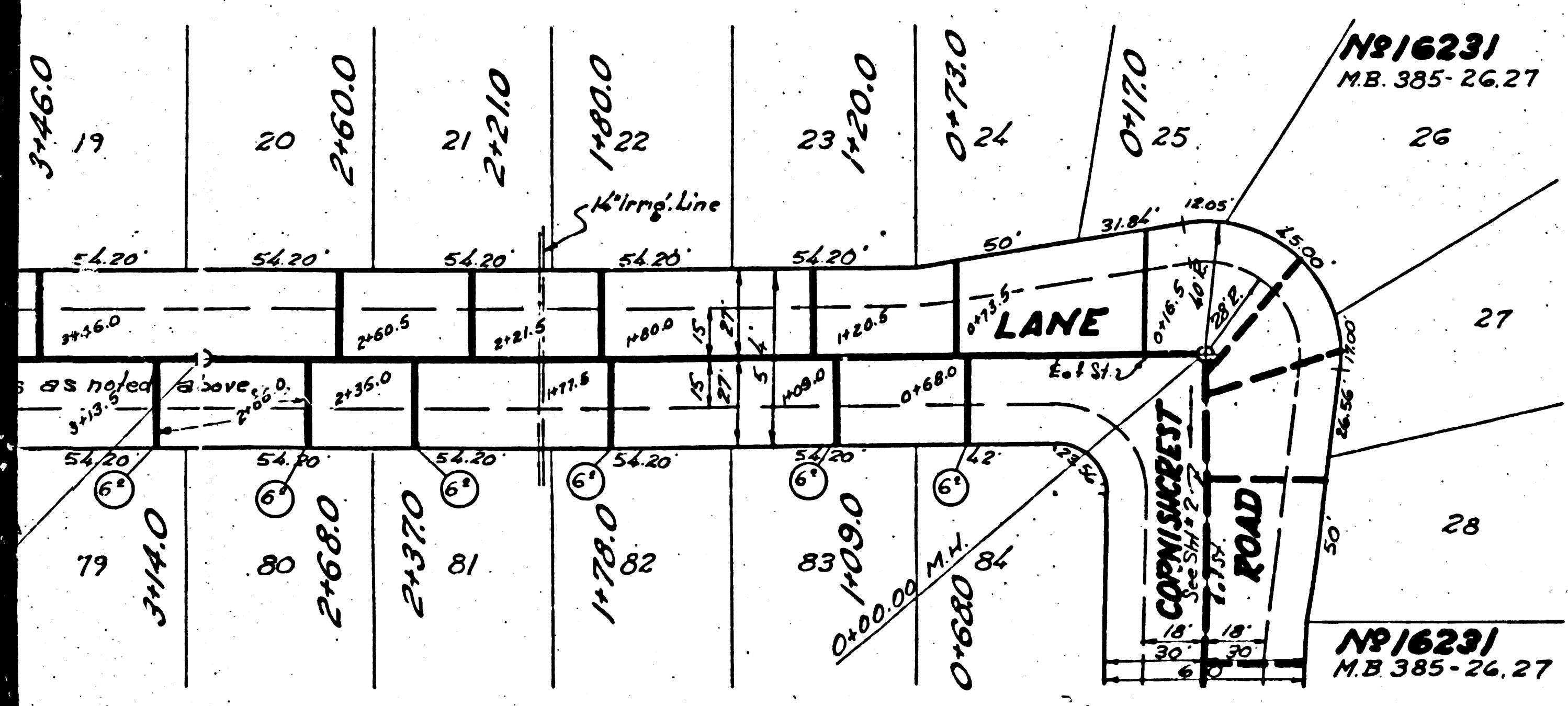
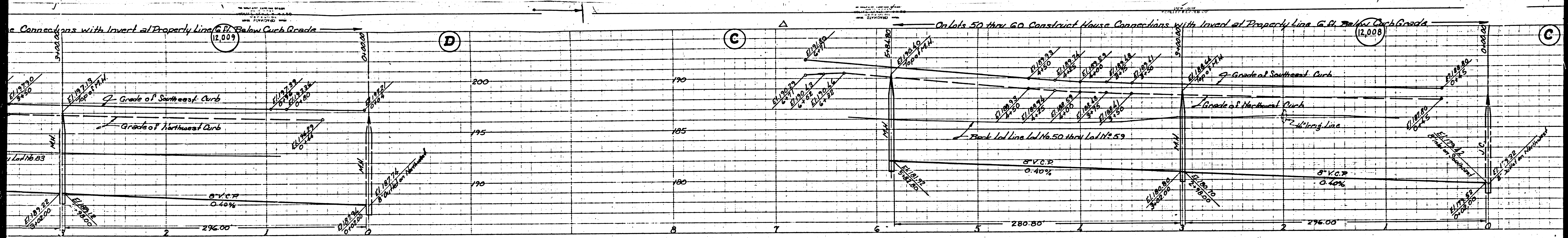
COUNTY OF LOS ANGELES, CALIFORNIA

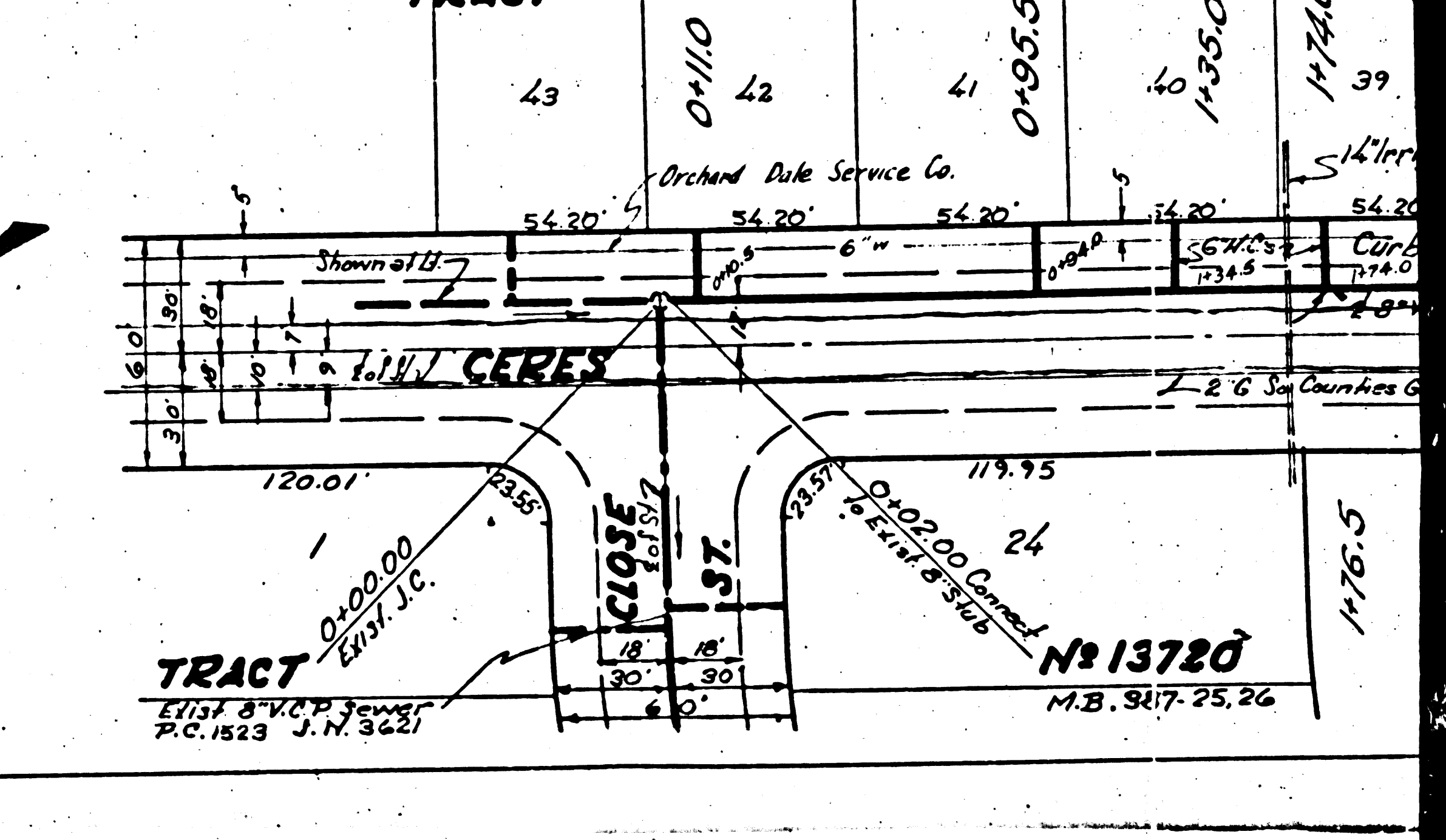
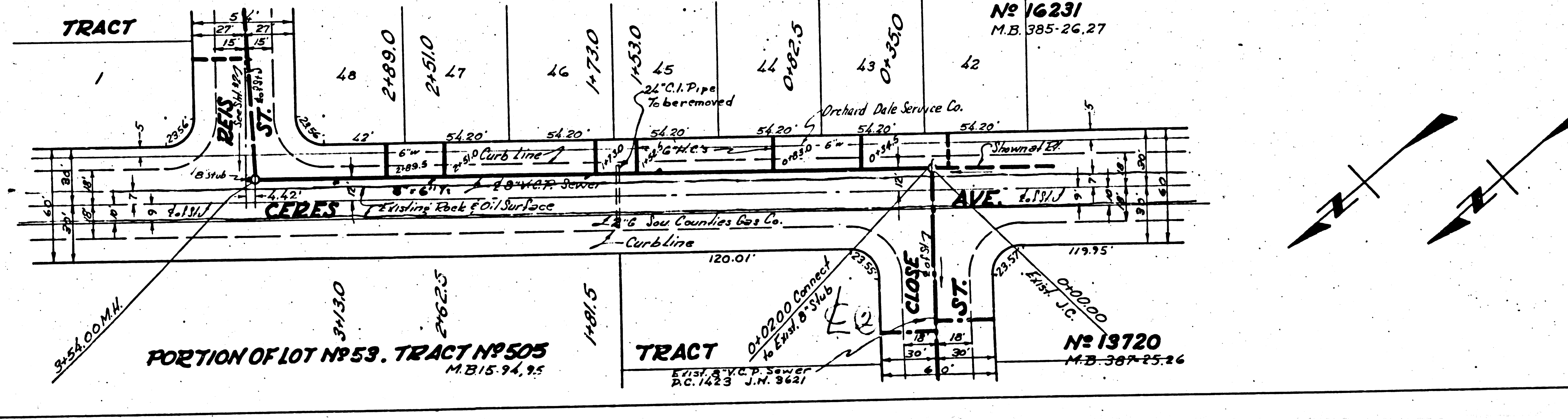
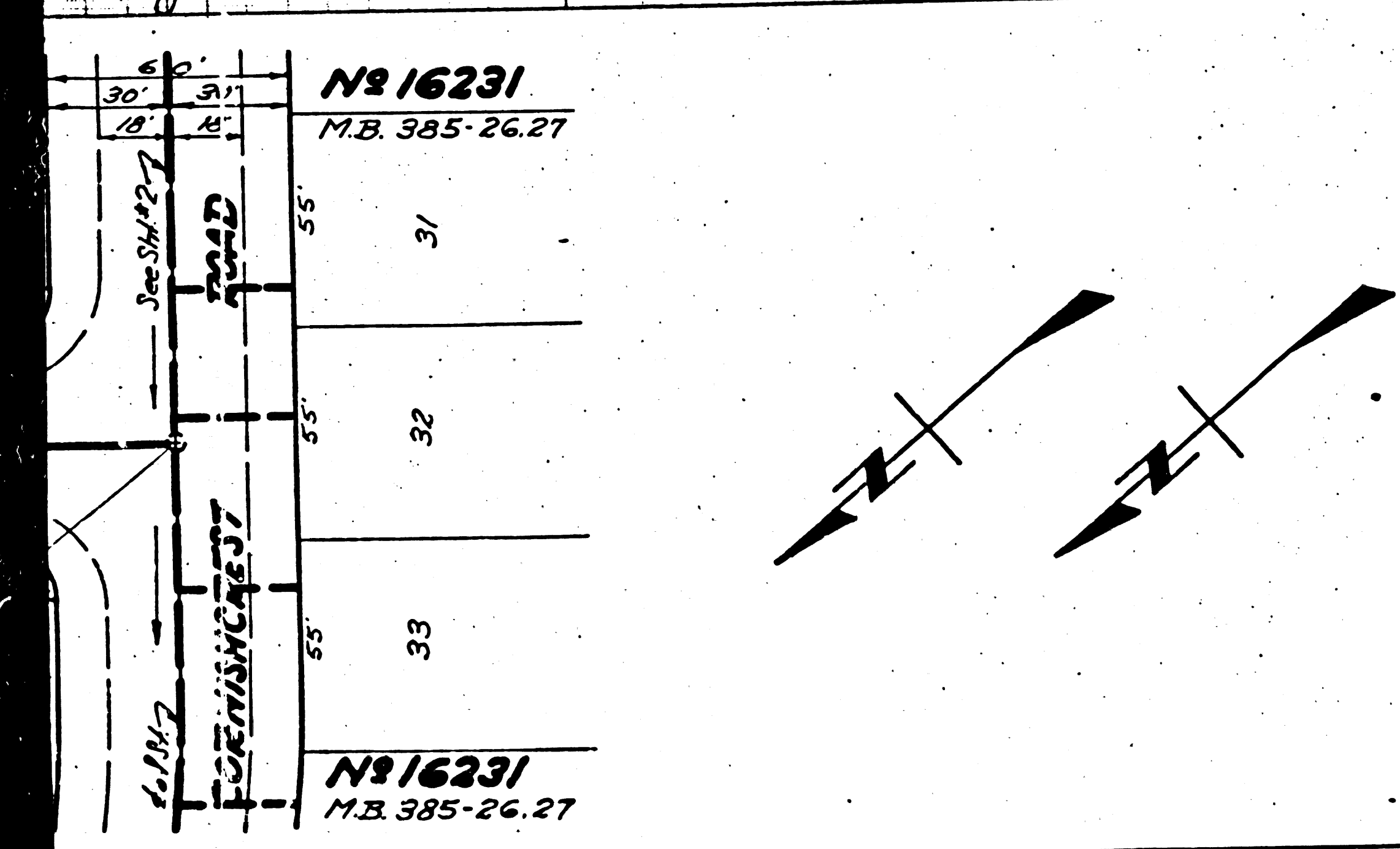
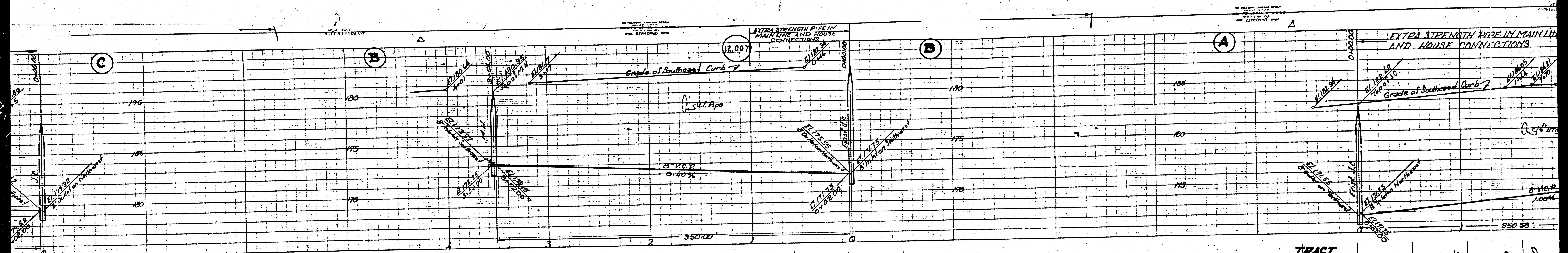
APPROVED *John W. Kemmerer*
 COUNTY ENGINEER

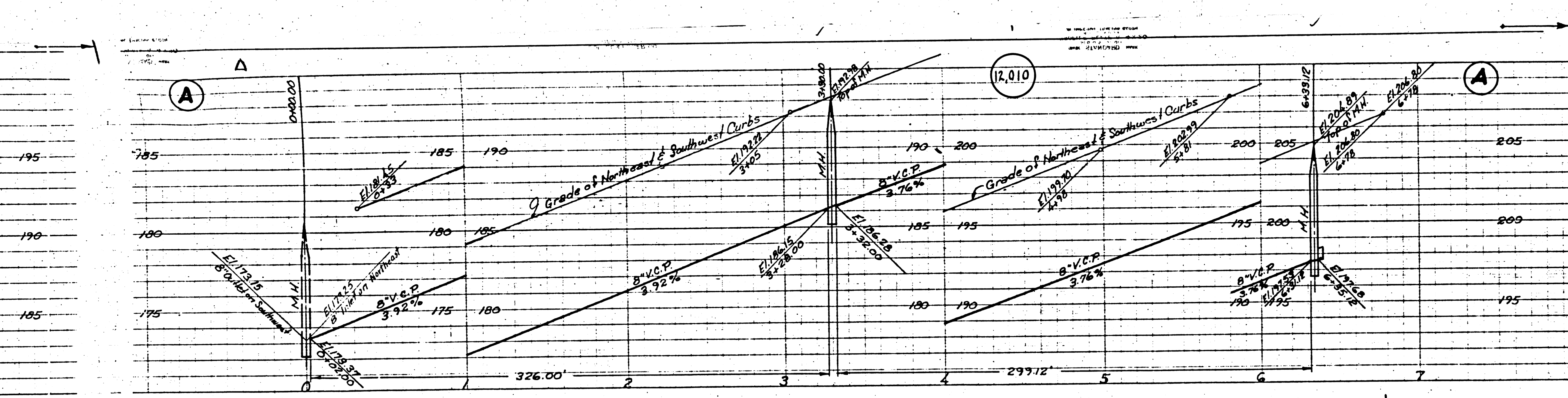
APPROVED *W. L. Leman*
 OFFICE CHIEF, DEPT. OF COUNTY ENGINEER, REG. C. E. NO. 18

CHECKED BY *W. L. Leman*
 DEPT. OF COUNTY ENGINEER, REG. C. E. NO. 18

DUP 1231

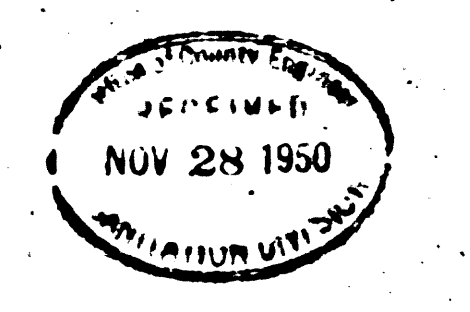
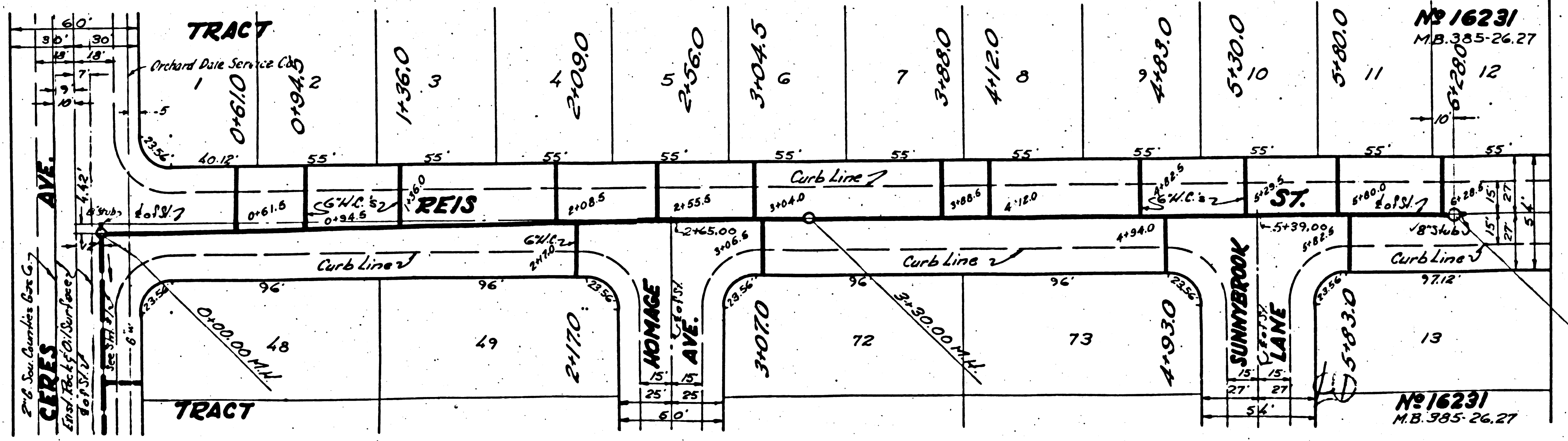






B.M. #57 F.B. B.A. 197 Pa. 16, L&T in S.W. corner of Weir Box, 25 ft. North 90° East of intersection of Anaheim Telephone Road & Ceres Ave. Elev. 177.23'

PROFILE ALIGNMENT AND GRADE OF
SANITARY SEWERS
 TO BE CONSTRUCTED IN
TRACT NO. 16231
 ON
REIS STREET
 BETWEEN CERES AVE. & SUNNYBROOK LANE
 BETWEEN CERES AVE. & SUNNYBROOK LANE.
 PRIVATE CONTRACT NO. 1524
 W.S. 34
 SHEET NO. 2 OF 2 SHEETS
 SCALE: VERT. 1" = 4' HORIZ. 1" = 40'
 SEPTEMBER 1950
 PREPARED IN THE OFFICE OF
KEMMERER ENG. CO. INC.
 BY *John M. Kamm*
 REG. C.E. 274
 SEE SHEET NO. 1 FOR CONSTRUCTION NOTES



APPROVED *W. J. Kamm*
 COUNTY ENGINEER
 APPROVED BY *A. M. RAWN*
 OFFICE ENGINEER
 CHIEF ENGINEER
 SANITATION DISTRICT #18
 CHECKED BY *J. M. Kamm*
 11-20-50
 OFFICE OF COUNTY ENGINEER
 REG. C.E. NO. 7675

check 2-21-51 *Kamm*

Trim Line B

