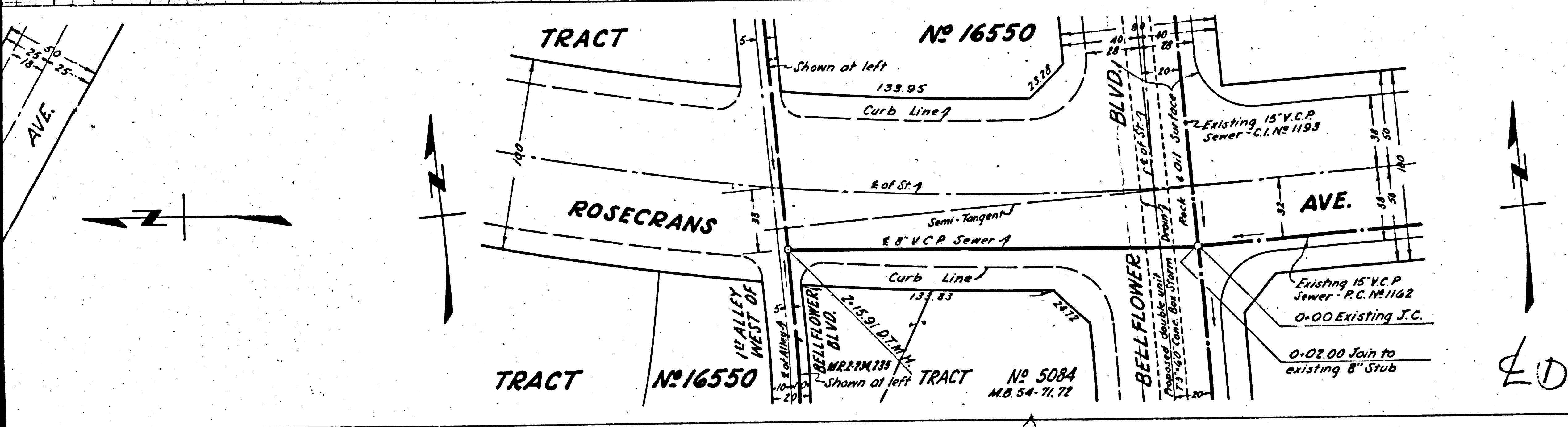


PROFILE ALIGNMENT AND GRADE OF SANITARY SEWERS TO BE CONSTRUCTED IN

- (A) ROSECRANS AVE. BETWEEN BELFLOWER BLVD. & ALLEY TO WEST
- (B) ALLEY WEST OF BELFLOWER BLVD. BETWEEN VAN RUITEN ST. & ROSECRANS AVE.
- (C) ALLEY WEST OF BELFLOWER BLVD. BETWEEN VAN RUITEN ST. & ROSECRANS AVE.
- (D) ALLEY SOUTH OF VAN RUITEN ST. BETWEEN VAN RUITEN ST. & ALLEY WEST OF BELFLOWER BLVD.
- (E) ALLEY SOUTH OF ROSECRANS AVE. BETWEEN ARDIS AVE. & ALLEY WEST OF BELFLOWER BLVD.

PRIVATE CONTRACT No. 1526
 W.S.
SHEET 1 OF 1 SHEETS
 PREPARED IN THE OFFICES OF
[Signature]
 R. S. No. 3247



FOR LEGEND

NOTE: GRADES TO WHICH THIS IMPROVEMENT IS TO BE CONSTRUCTED ARE SHOWN ON PLANS AND PROFILES.

GRADE POINTS FOR TOP OF CURB, CENTER LINE OF STREET OR CENTER LINE OF ALLEY ARE SHOWN BY CURVES IN PROFILES. GRADES FOR TOP OF CURB AND SEPARATE LINE DRAWN BETWEEN INDICATED POINTS.

ELEVATIONS ARE IN FEET ABOVE MEAN SEA LEVEL.

THIS DRAWING AND THE DATA HEREON ARE HEREBY MADE A PART OF THE SPECIFICATIONS.

THE CONTRACTOR SHALL BE RESPONSIBLE FOR OBTAINING ALL NECESSARY PERMITS AND SHALL BE RESPONSIBLE FOR THE PROTECTION OF ALL UTILITIES TO REMAIN IN PLACE. THE CONTRACTOR SHALL BE RESPONSIBLE FOR THE PROTECTION OF ALL UTILITIES TO REMAIN IN PLACE.

APPROVAL OF THIS PLAN BY THE COUNTY ENGINEER SHALL BE A CONDITION OF THE CONTRACT.

COUNTY OF LOS ANGELES, CALIFORNIA

APPROVED: *[Signature]*
 COUNTY ENGINEER

APPROVED: *[Signature]*
 DISTRICT ENGINEER

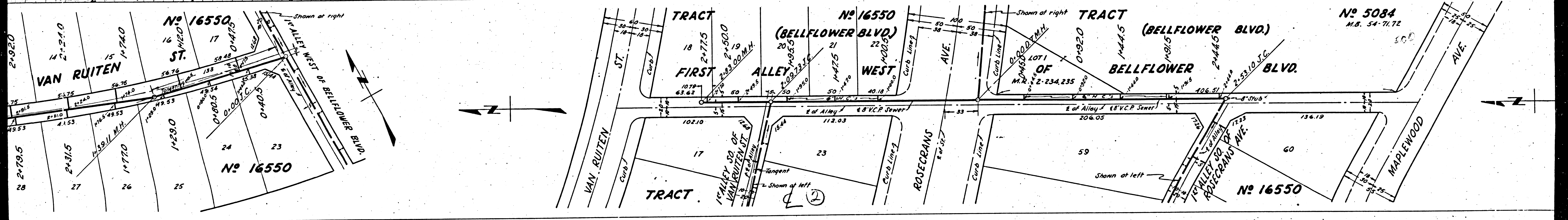
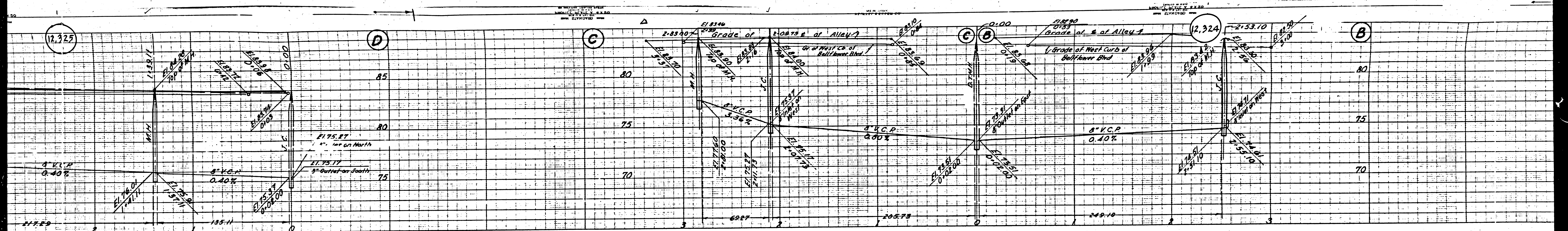
CHECKED: *[Signature]*
 OFFICE OF COUNTY ENGINEER

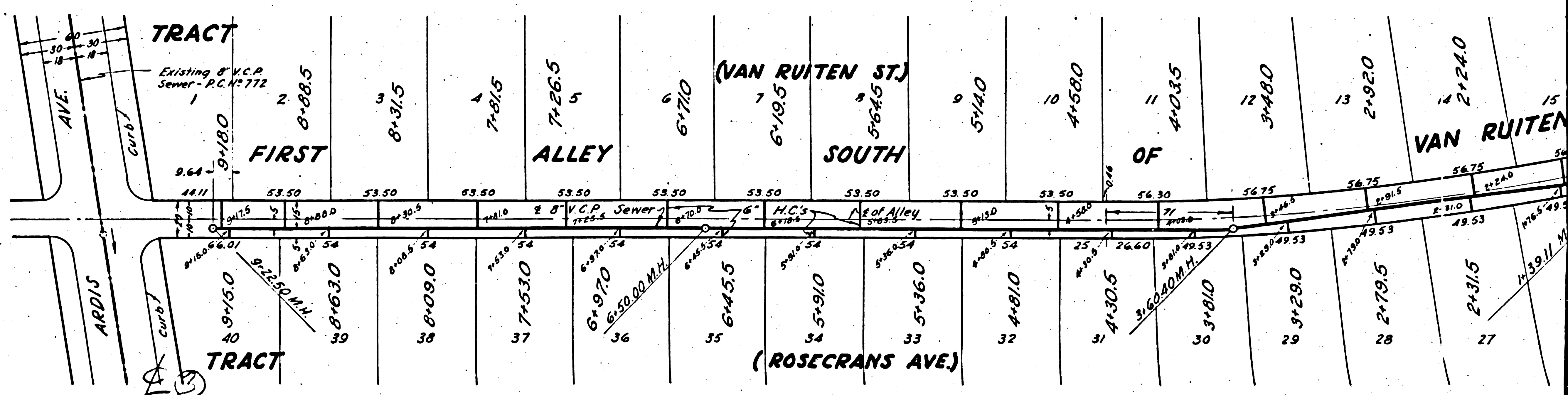
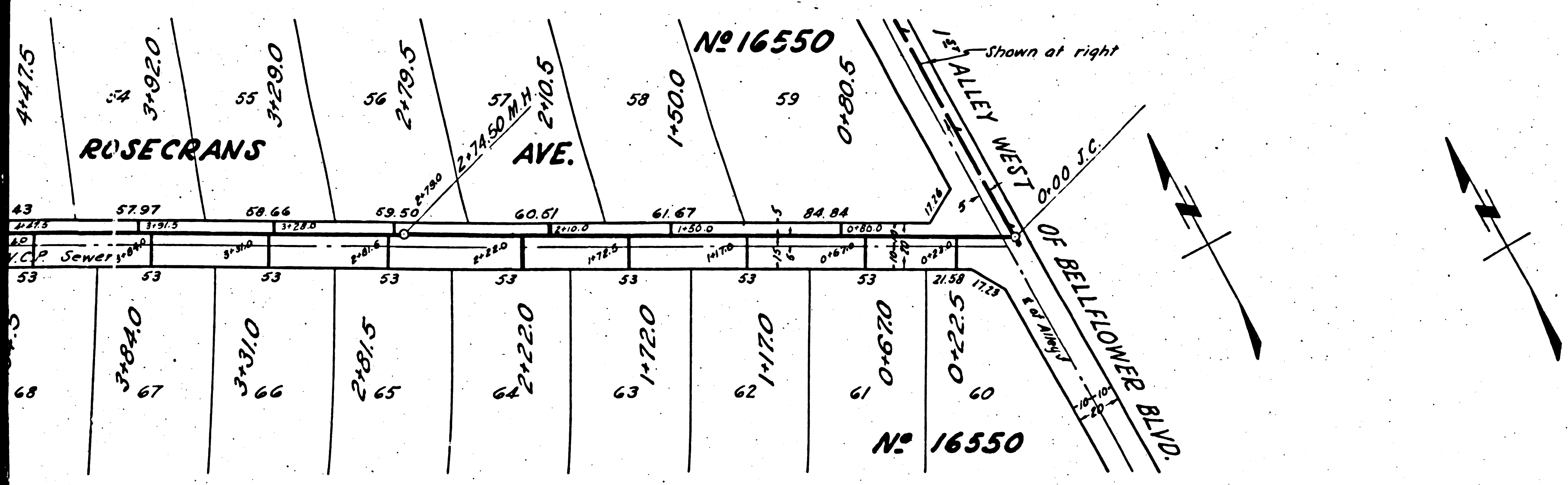
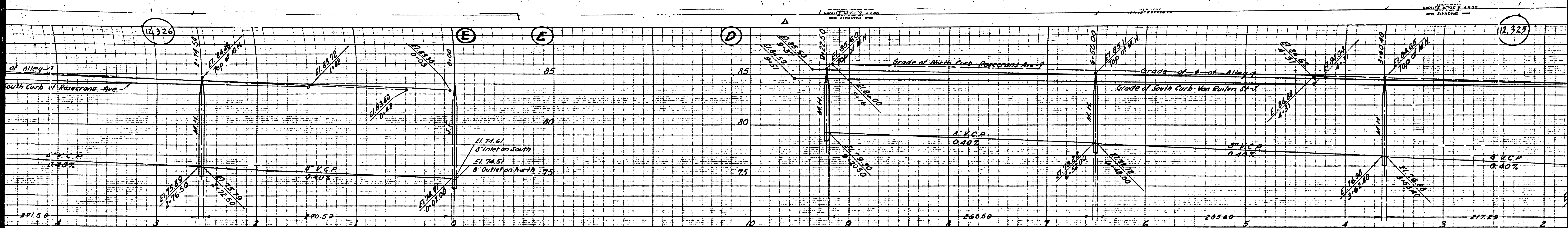
INDEX MAP
 P.C. 1526 J.N. 3624
 Scale 1"=600'

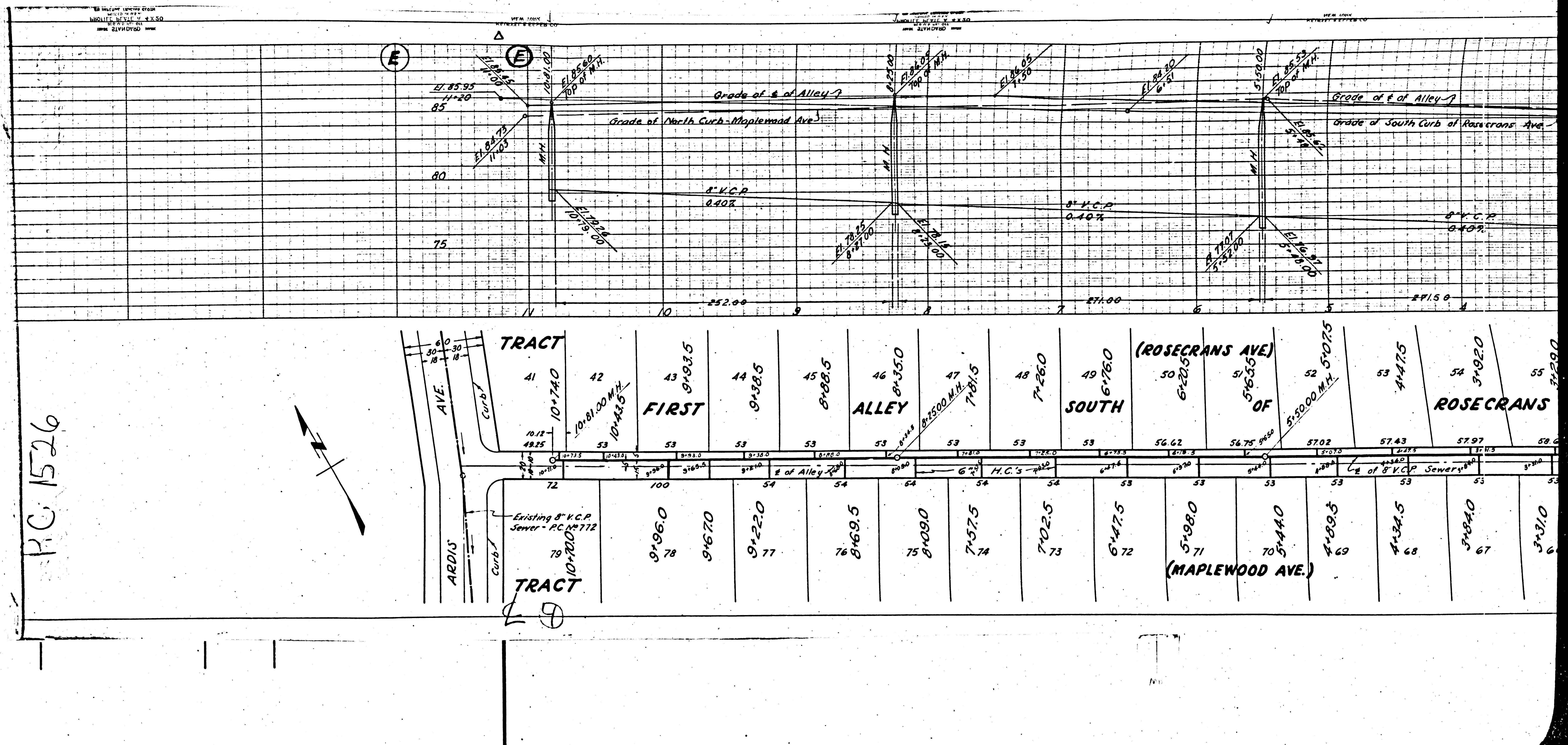
DATE: 4-2-40

NOV 8 1940

J.P.K.







PC 1526