

USE STANDARD STRENGTH PIPE
 USE CEMENT MORTAR JOINTS, VITRIFIED CLAY PIPE JOINTS
 GRASS FOUR FEET OF SEWER AT POINTS OF INTERFERENCE WITH POLES AS PER S. 115
 CONSTRUCT HOUSE CONNECTIONS WITH INSET AT PROFILES 1/2 FEET BELOW CURB GRADE
 ALL STRUCTURES SHALL BE WORK SEWER STRUCTURES AS PER PLAN NO. S-1707
 75# STANDARD MANDIBLE FRAMES AND COVERS AS PER PLAN NO. S-1707
 CONSTRUCT TOPS OF ALL STRUCTURES IN RIGHTS OF WAY 1' ABOVE FINISHED GRADE
 RESURFACE ALL TRENCHES WITHIN PAVED AREA TO MEET LOS ANGELES COUNTY ROAD DEPT.
 REQUIREMENTS IN ACCORDANCE WITH PERMIT

NO REVISIONS SHALL BE MADE IN THESE PLANS WITHOUT APPROVAL OF THE COUNTY ENGINEER
 NO REPRESENTATIVE OF THE COUNTY ENGINEER SHALL SURVEY OR LAY OUT ANY PORTION
 OF THE WORK
 THE OWNER OR HIS AUTHORIZED REPRESENTATIVE SHALL FURNISH THE COUNTY ENGINEER WITH
 GRADE SHEETS AND STATIONS OF ALL HOUSE CONNECTIONS AND 1' BRANCHES AND SHALL
 PROVIDE STAKES FOR THEM AT THEIR PROPER LOCATIONS WITH STATIONING PLAINLY MARKED
 ANY CHANGE OF LOCATION SHALL BE REQUESTED IN WRITING BY THE OWNER OR HIS
 REPRESENTATIVE

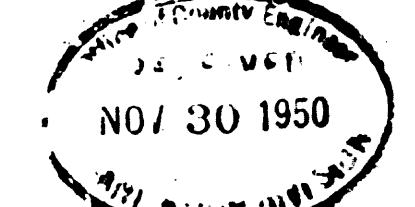
PROFILE ALIGNMENT AND GRADE OF
SANITARY SEWERS
 TO BE CONSTRUCTED IN
TRACT N° 17107
 ON
RYLAND AVE.
 BETWEEN LOWER AZUSA ROAD & NORTH TRACT BDRY

PRIVATE CONTRACT NO. 1535
 W. S. 44
 SHEET 1 OF 1 SHEETS
 SCALE: VERT. 1"=4' HORIZ. 1"=40'
 SEPT 1950

PREPARED IN THE OFFICES OF
KEMMERER ENG. CO.

BY: *J. M. Kemmerer*
 REG. C. E. NO. 572

FOR LEGEND
 SEE PLAN NO. S-6-64

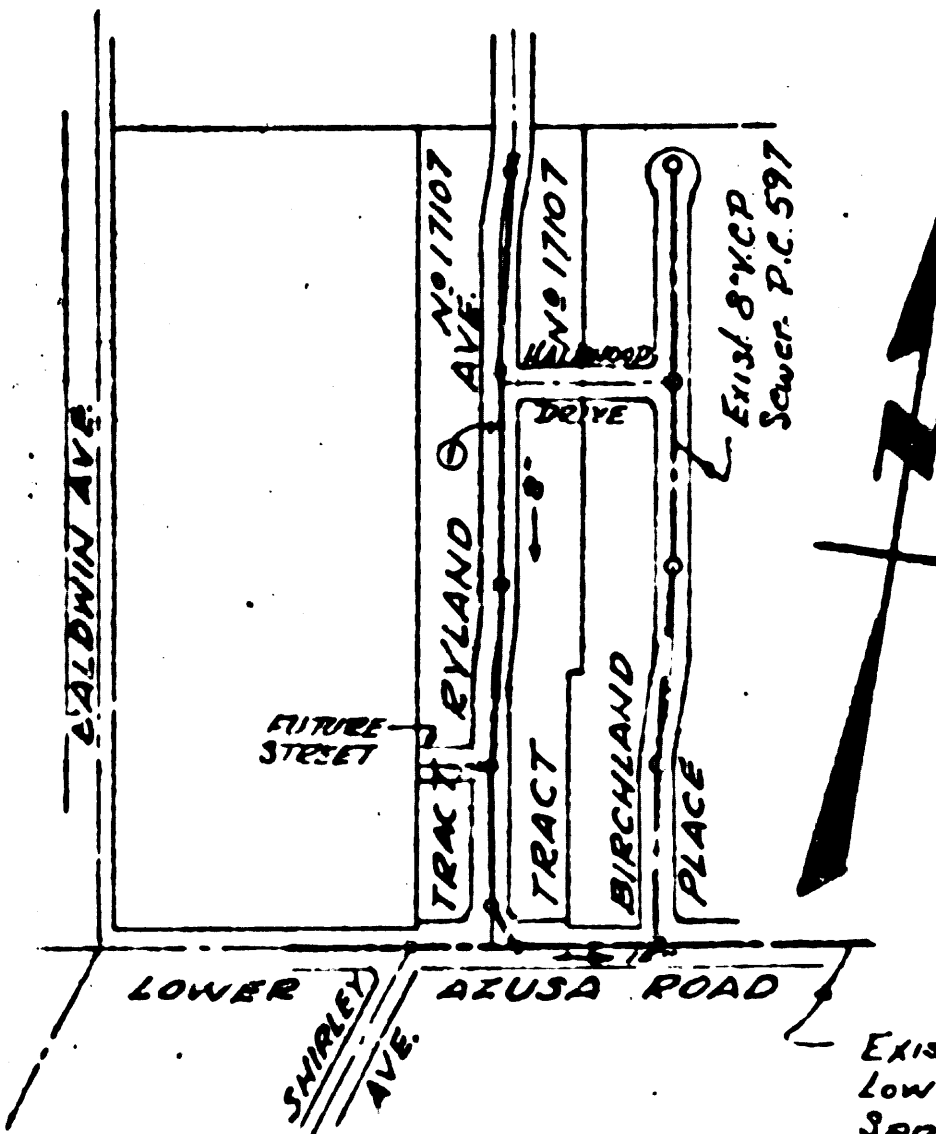


NOTE:
 GRADES TO WHICH THIS IMPROVEMENT IS TO BE CONSTRUCTED ARE SHOWN ON PLANS AND PROFILES.
 GRADE POINTS FOR TOP OF CURB, CENTER LINE OF STREET OR CENTER LINE OF ALLEY ARE SHOWN BY
 DIMENSIONS ON PROFILES AT ALL POINTS BETWEEN DESIGNATED POINTS THE GRADE SHALL BE ESTABLISHED
 SO AS TO CONFORM TO A STRAIGHT LINE DRAWN BETWEEN SAID DESIGNATED POINTS.
 ELEVATIONS ARE IN FEET ABOVE U. S. & B. DATUM OR MEAN SEA LEVEL.
 THIS DRAWING AND THE DATA HEREON ARE HEREBY MADE A PART OF THE SPECIFICATIONS
 WORK SHALL BE CONSTRUCTED ACCORDING TO SPECIFICATIONS ON FILE IN THE OFFICE OF THE
 COUNTY ENGINEER AND SHALL BE PROSECUTED ONLY IN THE PRESENCE OF THE COUNTY ENGINEER
 BEFORE WORK CAN BE STARTED. THE CONTRACTOR MUST OBTAIN A PERMIT TO EXCAVATE IN
 COUNTY STREETS FROM THE L. A. COUNTY ROAD DEPT. IN SO MANY WORDS AS TO MAKE A DEPOSIT
 WITH THE COUNTY ENGINEER, ROOM 834 AT HOWLAND STREET, SUFFICIENT TO COVER THE COST OF
 CONSTRUCTION INSPECTION AND RECORD PLANS.
 IF WORK IS TO BE DONE IN A STATE HIGHWAY, A PERMIT MUST BE OBTAINED FROM THE STATE
 OF CALIFORNIA, DIVISION OF HIGHWAYS, 808 STATE BUILDING, AFTER MAKING THE DEPOSIT WITH THE
 COUNTY ENGINEER.

COUNTY OF LOS ANGELES, CALIFORNIA

APPROVED: *J. M. Kemmerer*
 COUNTY ENGINEER
 APPROVED BY: *[Signature]*
 CH. ENGINEER OF COUNTY
 SANITATION DISTRICT NO. 13

CHECKED BY: *Richard S. Kahan* No. 13, 1950
 OFFICE OF COUNTY ENGINEER, REG. C. E. NO. 7625



INDEX MAP
 SCALE 1"=400'
 PC. 1535 J.M. 3433

Exist. 15" N.R.C. Extra Strength
 Lower Azusa Trunk Sewer
 San. Dist. No. 15

Existing 15" N.R.C. Extra Strength
 Lower Azusa Trunk Sewer San. Dist. No. 15

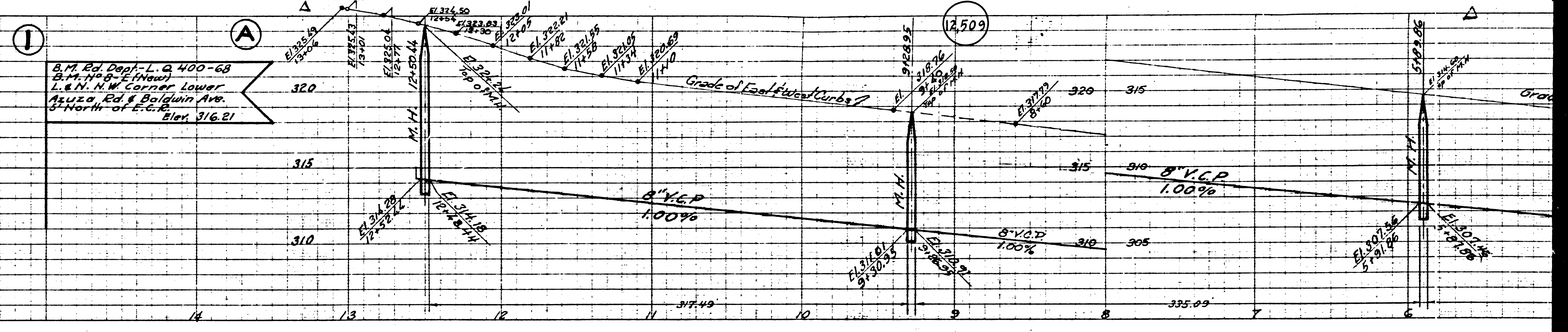
NOTE:
 Notify Sanitation District before
 breaking into manhole.

Exist. 15" N.R.C. Extra Strength
 Lower Azusa Trunk Sewer
 San. Dist. No. 15

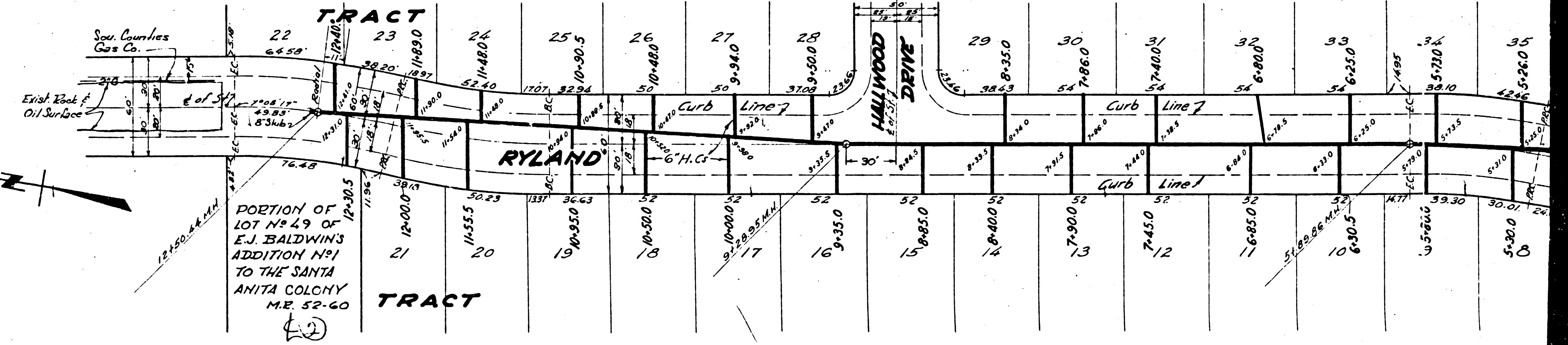
20

P.C. 1535 TO 1202

SHEET 1 OF 13 SHEETS
EXTEND AND
RECORD AS IND. ON PLANS 254853
R.C.



B.M. Ed. Dept. - L. Q. 400-68
B.M. 449.8 - E. (New)
L.E.N. N.W. Corner Lower
Aluzza Rd. & Baldwin Ave.
5' North of E.C.R.
Elev. 316.21



PORTION OF
LOT # 49 OF
E.J. BALDWIN'S
ADDITION NO. 1
TO THE SANTA
ANITA COLONY
M.E. 52-60

