

B.M. Elev. 371.0, 1.0813-1 B.M. No. 15  
Cut Spk. S's of B.C.R.S.W. Cor. of  
Broadway & Encinita on Encinita

- 1. USE STANDARD MANHOLE FRAMES AND COVERS SIZE
- 2. USE STANDARD STURDIE PIPE (RECT OR ROPED)
- 3. ALL JOINTS SHALL BE MADE WITH JOINT COMPOUND
- 4. REINFORCE ALL TRENCH WITHIN PAVED AREA TO MEET LOS ANGELES COUNTY ROAD DEPARTMENT OR CALIFORNIA STATE HIGHWAY REQUIREMENTS
- 5. CONTRACTOR TO MAKE CONNECTIONS WITH EXISTING AT PROPERTY LINE OR FIRST SECTION CURB GRADE (EXCEPT AT INTERSECTIONS)
- 6. EXCAVE FOUR FEET DEEP AT POINTS OF INTERSECTIONS WITH POLES AS PER SPEC.
- 7. ALL STRUCTURES SHALL BE BUILT WITH REINFORCED CONCRETE
- 8. CONTRACTOR TO MAKE UP ALL STRUCTURES IN RIGHT OF WAY 4 INCHES ABOVE FINISHED GRADE

**PROFILE ALIGNMENT AND GRADE OF  
SANITARY SEWERS  
TO BE CONSTRUCTED IN  
NOEL DRIVE,  
SANITARY SEWER RIGHT OF WAY  
LOMA AVENUE  
BETWEEN 462 FT. NORTH OF BROADWAY & 174 FT. NORTH OF THE SOUTH LINE  
OF TRACT NO. 16305  
TRACT NO. 16305 2<sup>ND</sup> REV**

**PRIVATE CONTRACT No. 1538  
W.S. 44  
SHEET 1 OF 1 SHEETS  
M.M. 30, 1951**

PREPARED IN THE OFFICE OF  
**KARL TUTTLE**

Note: Sizers to be installed with joint compound by manufacturer of his plant. Specs. Sec. 33, 49, Concrete Pavement to be cut not less than 2" in depth with Concrete Saw, Spec. 65.

Revised Feb. 7, 1952  
② Sta 0+02 to Sta 4+09.28  
Not to be Constructed. Outlet  
for sewers under this Contract  
through P.C. 2009.

Revision Checked *Richard E. Kuhn* 2-8-52  
Office of County Engineer Reg. C.E. 7660

Revised Dec. 1, 1951  
Added Tract No. 16134

Revision Checked *Richard E. Kuhn* 12-4-51  
Office of County Engineer Reg. C.E. 7660

Checked *S. 20-52 Wilson*

*Karl Tuttle*  
R.E. 2000

**FOR LEGEND**

NOTE: CONTRACTOR TO BE RESPONSIBLE FOR THE PROTECTION AND SUPPORT OF ALL EXISTING UTILITIES AND STRUCTURES AND TO MAKE NECESSARY CONNECTIONS AND REPAIRS TO SAME. ALL UTILITIES AND STRUCTURES TO BE PROTECTED BY THE CONTRACTOR. THE CONTRACTOR SHALL OBTAIN A "PERMIT TO EXCAVATE" FROM THE COUNTY ENGINEER BEFORE ANY EXCAVATION IS MADE. THE CONTRACTOR SHALL BE RESPONSIBLE FOR THE PROTECTION AND SUPPORT OF ALL EXISTING UTILITIES AND STRUCTURES AND TO MAKE NECESSARY CONNECTIONS AND REPAIRS TO SAME. ALL UTILITIES AND STRUCTURES TO BE PROTECTED BY THE CONTRACTOR. THE CONTRACTOR SHALL OBTAIN A "PERMIT TO EXCAVATE" FROM THE COUNTY ENGINEER BEFORE ANY EXCAVATION IS MADE.

COUNTY OF LOS ANGELES, CALIFORNIA

APPROVED: *Karl Tuttle*  
COUNTY ENGINEER

APPROVED BY: *Richard E. Kuhn* 2-8-52  
OFFICE ENGINEER

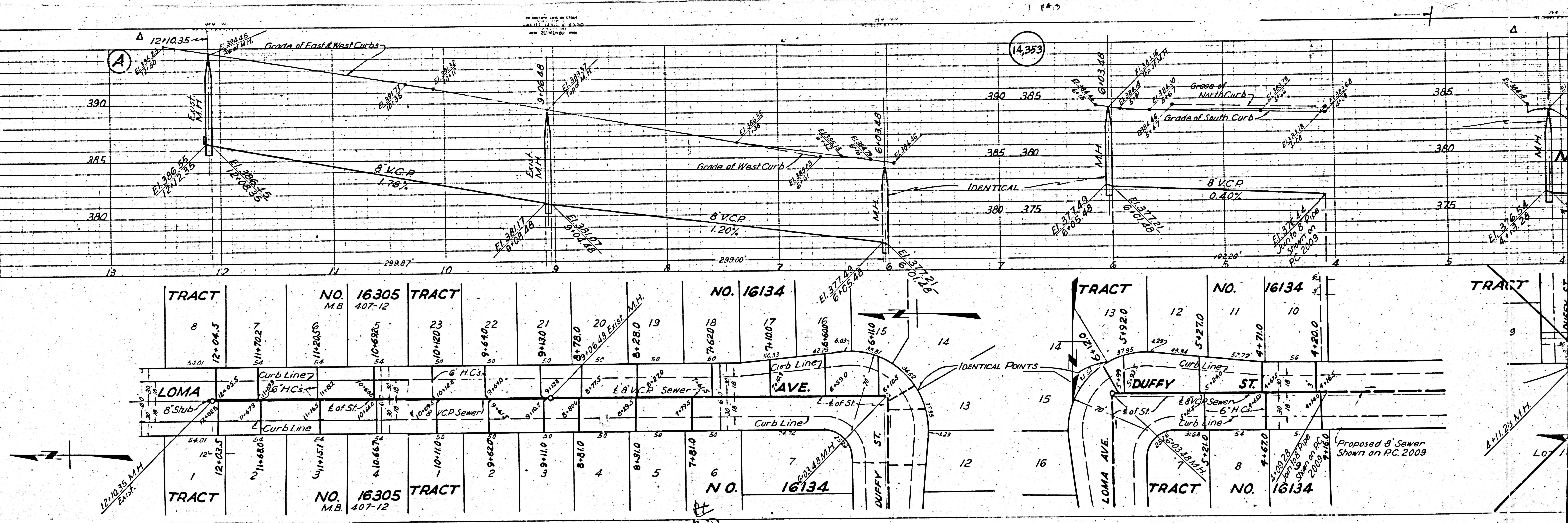
CHANGED: *Bill Swales* 4-2-51  
OFFICE OF COUNTY ENGINEER R.E. 7660

FEB 14 1952

TRACT NO. 16305  
NOEL DRIVE  
LOMA AVENUE  
SUNNY VIEW TRACT  
TRACT NO. 15554  
TRACT NO. 16134  
ONE SHEET

ONE SHEET

TRACT NO 16302 BC 1238  
PC 1538



12+10.35

14,353

TRACT NO. 16305 TRACT  
MB 407-12

TRACT NO. 16134 TRACT

TRACT NO. 16134 TRACT

TRACT NO. 16134 TRACT

LOMA AVE

LOMA AVE

DUFFY ST

DUFFY ST

LOMA AVE

TRACT NO. 16134

Proposed 8" Sewer  
Shown on PC 2009

