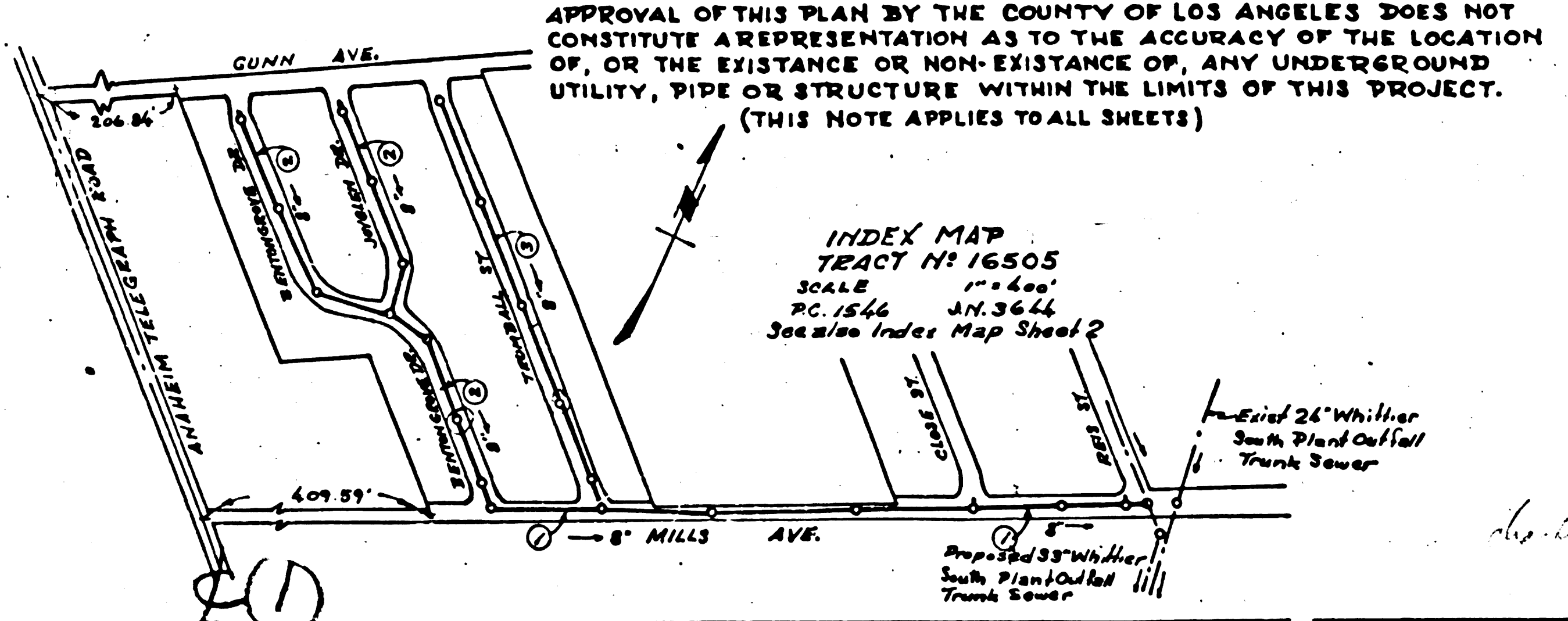


B.M. No. 70.
 S.Y. B.M. Page 26. 271Y & 18'South
 U.P. 12 1/2' East of Mills Ave.
 15' Deep
 Elev. 197.25

	USE STANDARD STRENGTH PIPE EXCEPT AS NOTED	(12,968)
	USE CEMENT MORTAR FOR ALL VITRIFIED CLAY PIPE JOINTS	
	ENCASE FOUR FEET OF SEWER AT POINTS OF INTERFERENCE WITH POLES AS PER S-4-113	
	CONSTRUCT HOUSE CONNECTIONS WITH INVERT AT PROP. LINE 8'-FEET BELOW CURB GRADE EXCEPT AS NOTED	
	ALL STRUCTURES SHALL BE BRICK SEWER STRUCTURES AS PER PLAN NO. S-4-104 EXCEPT AS NOTED	
	USE STANDARD MANHOLE FRAMES AND COVERS AS PER PLAN NO. S-4-117 EXCEPT AS NOTED	
	CONSTRUCT TOPS OF ALL STRUCTURES IN RIGHTS OF WAY 2' ABOVE FINISHED GRADE	
	RESURFACE ALL TRENCHES WITHIN PAVED AREA TO MEET LOS ANGELES COUNTY ROAD DEPT. OR STATE HIGHWAY REQUIREMENTS IN ACCORDANCE WITH PERMIT	
	PROVIDE STAKES ON THE PROPERTY LINES OR PROPERTY LINES PRODUCED, AT RIGHT ANGLES TO THE SEWER LINE AT THE CENTER LINE OF EACH MANHOLE.	
	NO REVISIONS SHALL BE MADE IN THESE PLANS WITHOUT APPROVAL OF THE COUNTY ENGINEER	
	NO REPRESENTATIVE OF THE COUNTY ENGINEER WILL SURVEY OR LAY OUT ANY PORTION OF THE WORK	
	THE OWNER OR HIS AUTHORIZED REPRESENTATIVE SHALL FURNISH THE COUNTY ENGINEER WITH GRADE SHEETS AND STATIONS OF ALL HOUSE CONNECTIONS AND Y BRANCHES AND SHALL PROVIDE STAKES FOR THEM AT THEIR PROPER LOCATIONS WITH STATIONING PLAINLY MARKED.	
	ANY CHANGE OF LOCATION SHALL BE REQUESTED IN WRITING BY THE OWNER OR HIS REPRESENTATIVE.	

STOPPERS TO BE INSTALLED WITH JOINT COMPOUND BY MANUFACTURER AT HIS PLANT. SPECIFICATIONS - SECTION 33.48.
 CONCRETE PAVEMENT TO BE CUT NOT LESS THAN 2 INCHES IN DEPTH WITH CONCRETE SAW. SPECIFICATIONS - SECTION 65.



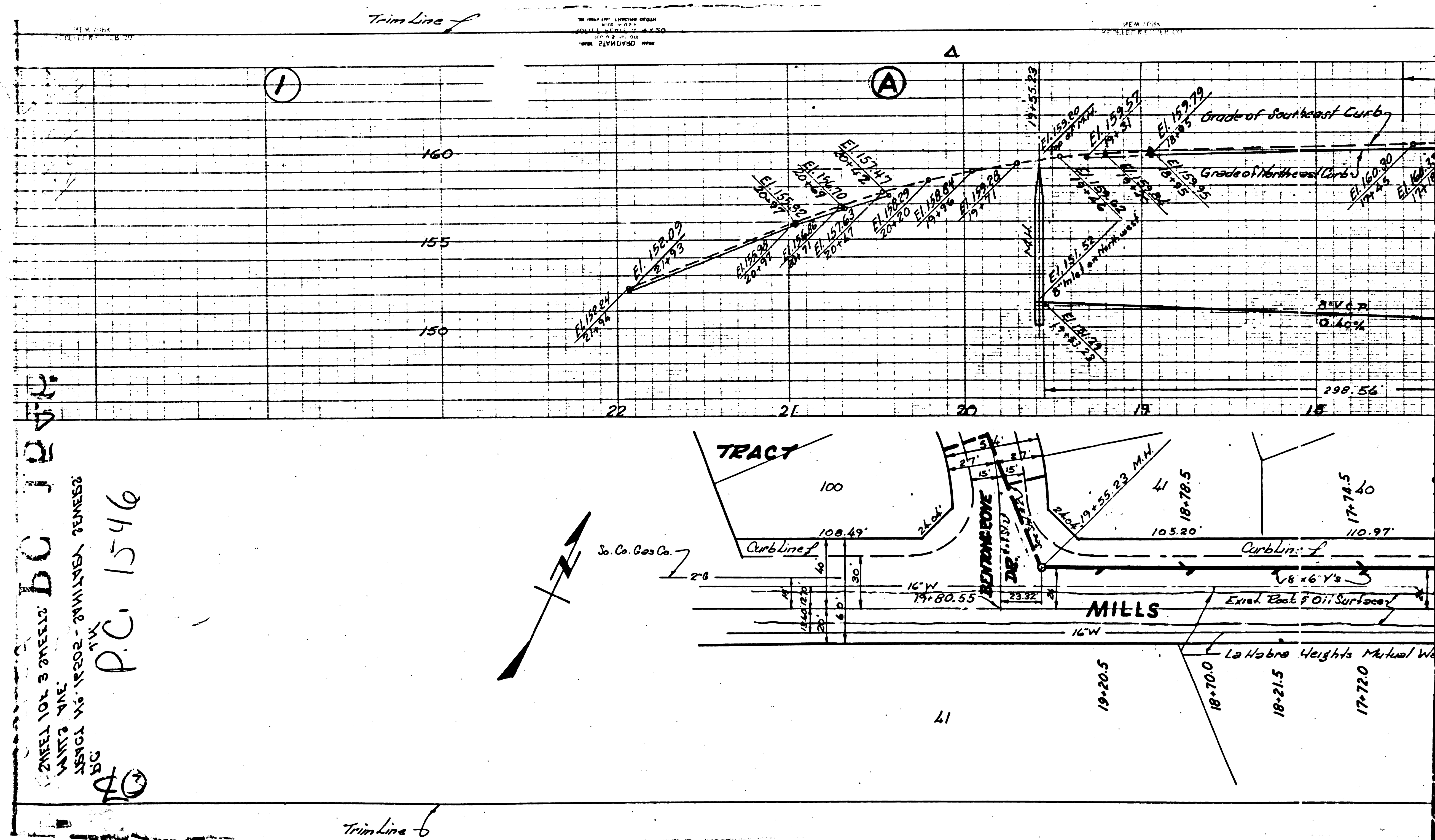
PROFILE ALIGNMENT AND GRADE OF
SANITARY SEWERS
 TO BE CONSTRUCTED IN
 TRACT NO. 16505
 IN
 MILLS AVENUE
 BETWEEN REIS ST. & BENTONGROVE DRIVE
 THIS SHEET SUPERCEDES SHEET 1, TR. 16505
 DATED MARCH, 1951

PRIVATE CONTRACT NO. 1546
 W. S. 34
 SHEET 1 OF 3 SHEETS
 SCALE: VERT. 1"=4'
 HORIZ. 1"=40'
 APRIL, 1951
 PREPARED IN THE OFFICES OF
KEMMERER ENG. CO.

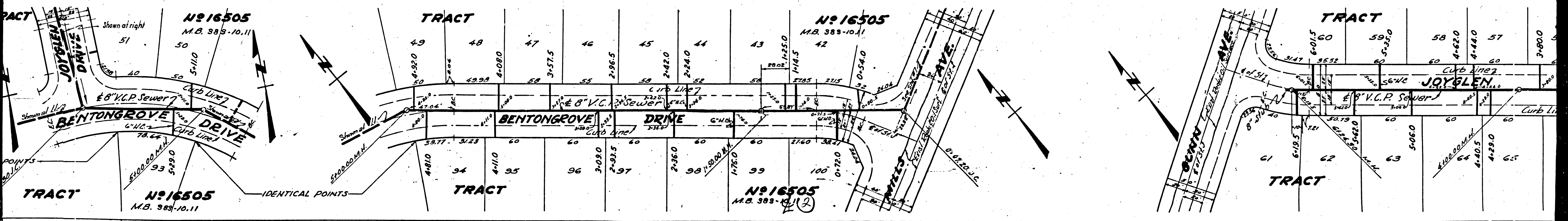
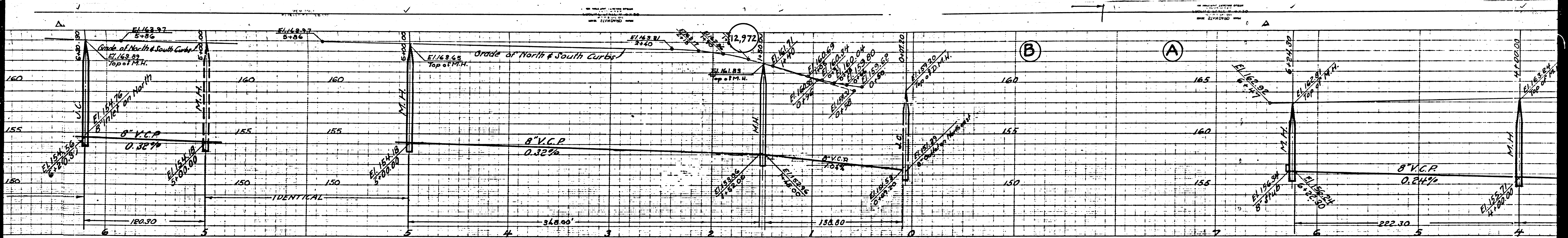
NOTE:
 GRADES TO WHICH THE IMPROVEMENT IS TO BE CONSTRUCTED ARE SHOWN ON PLANS AND PROFILES
 GRADE POINTS FOR TOP OF CURB CENTER LINE OF STREET OR CENTER LINE OF ALLEY ARE SHOWN BY
 CIRCLES ON PROFILES AT ALL POINTS BETWEEN DESIGNATED POINTS THE GRADE SHALL BE ESTABLISHED
 SO AS TO CONFORM TO A STRAIGHT LINE DRAWN BETWEEN SAID DESIGNATED POINTS.
 ELEVATIONS ARE IN FEET ABOVE U. S. G. S. DATUM OR MEAN SEA LEVEL.
 THIS DRAWING AND THE DATA HEREON ARE HEREBY MADE A PART OF THE SPECIFICATIONS.
 WORK SHALL BE CONSTRUCTED ACCORDING TO SPECIFICATIONS ON FILE IN THE OFFICE OF THE
 COUNTY ENGINEER AND SHALL BE PROSECUTED ONLY IN THE PRESENCE OF THE COUNTY ENGINEER.
 BEFORE WORK CAN BE STARTED, THE CONTRACTOR MUST OBTAIN A PERMIT TO EXCAVATE IN
 COUNTY STREETS FROM THE L. A. COUNTY ROAD DEPT. 108 W. 5th ST. LOS ANGELES AND MAKE A DEPOSIT
 WITH THE COUNTY ENGINEER, ROOM 830 AT 108 W. 5th STREET, SUFFICIENT TO COVER THE COST OF
 CONSTRUCTION, INSPECTION AND RECORD PLANS.
 IF WORK IS TO BE DONE IN A STATE HIGHWAY, A PERMIT MUST BE OBTAINED FROM THE STATE
 OF CALIFORNIA, DIVISION OF HIGHWAYS, 808 STATE BUILDING, AFTER MAKING THE DEPOSIT WITH THE
 COUNTY ENGINEER.

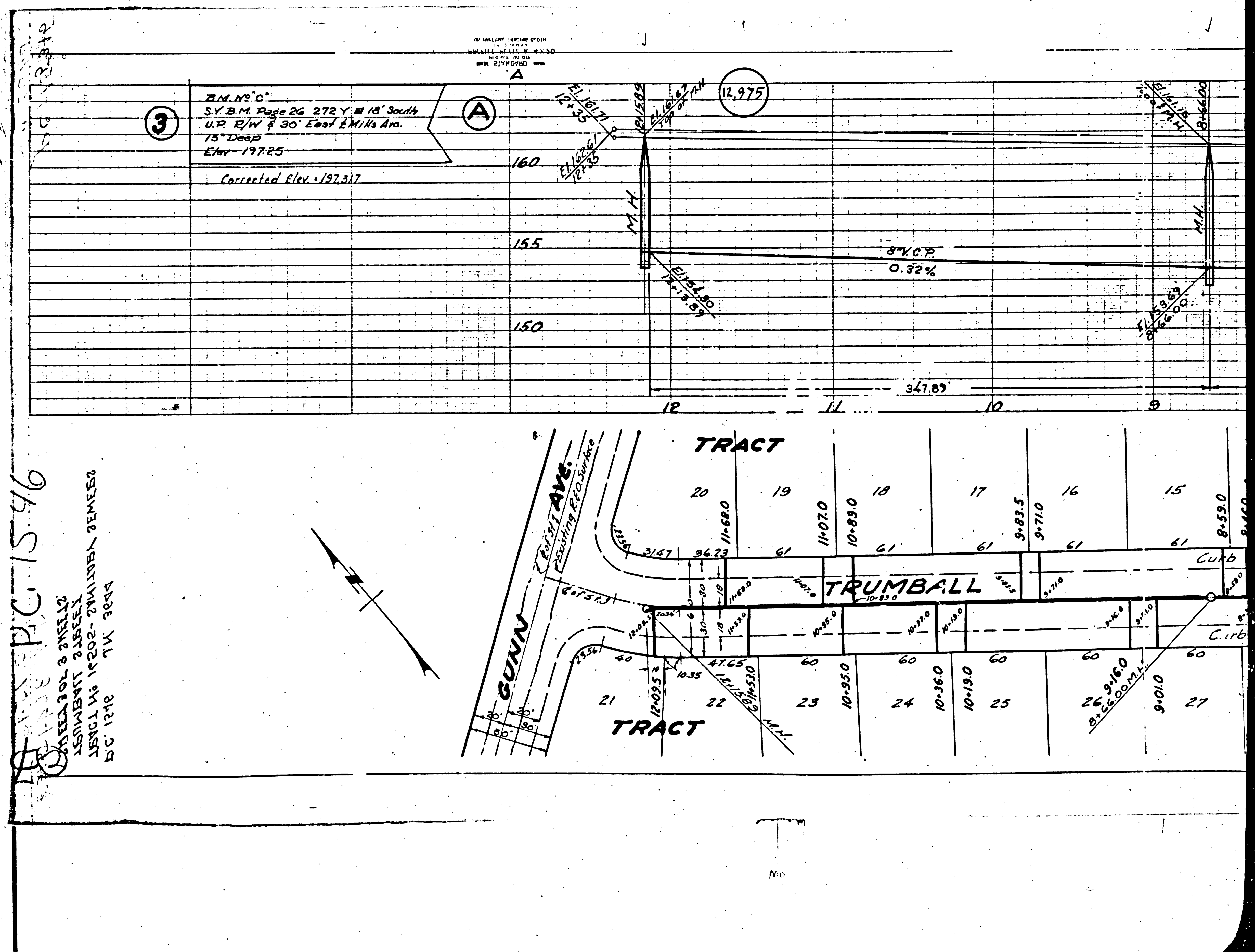
COUNTY OF LOS ANGELES, CALIFORNIA
 APPROVED *[Signature]*
 COUNTY ENGINEER
 APPROVED BY *[Signature]*
 OFFICE ENGINEER
 DIVISION DISTRICT NO. 16
 CHECKED BY *[Signature]*
 OFFICE OF COUNTY ENGINEER, 808 STATE BLDG., LOS ANGELES, CALIF.

SHEET 1 OF 3 SHEETS
 PRIVATE CONTRACT NO. 1546
 W. S. 34
 TRACT NO. 16505



SHEET NO. 3 OF 3
 DATE: MAR 1948
 BY: B.C. J.P. 1248
 P.C. 1546
 40





P.C. 1546
 AREA 30' x 200' x 100'
 ASSESSMENT 2000
 AREA 10' x 200' x 100'
 BC 1218 TX 3004