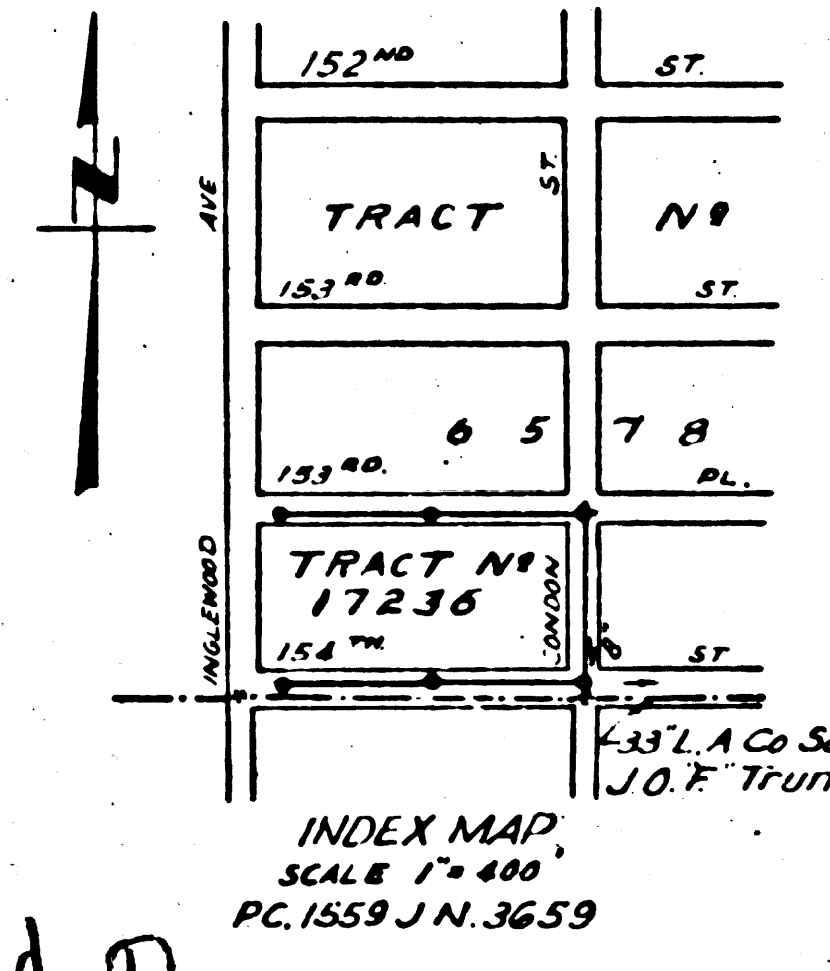
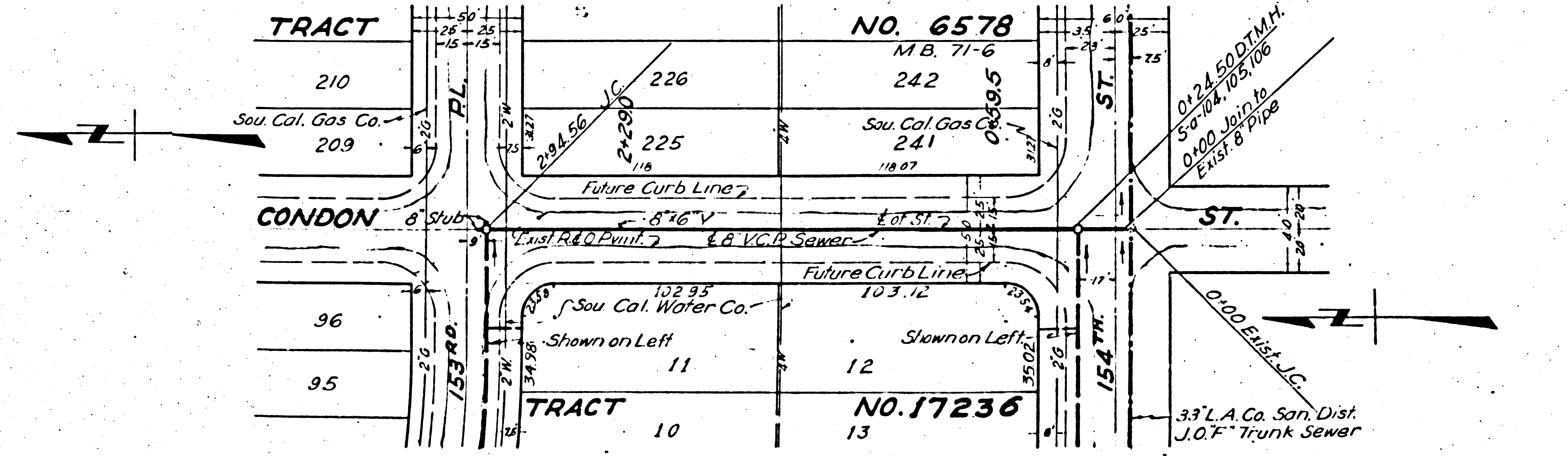


1. ALL STANDARD MANHOLE FRAMES AND COVERS SHALL BE 24" STANDARD STEEL PIPE SET IN AT TOP OF CURB.  
 2. ALL STANDARD MANHOLE FRAMES AND COVERS SHALL BE 24" STANDARD STEEL PIPE SET IN AT TOP OF CURB.  
 3. ALL STANDARD MANHOLE FRAMES AND COVERS SHALL BE 24" STANDARD STEEL PIPE SET IN AT TOP OF CURB.  
 4. ALL STANDARD MANHOLE FRAMES AND COVERS SHALL BE 24" STANDARD STEEL PIPE SET IN AT TOP OF CURB.  
 5. ALL STANDARD MANHOLE FRAMES AND COVERS SHALL BE 24" STANDARD STEEL PIPE SET IN AT TOP OF CURB.  
 6. ALL STANDARD MANHOLE FRAMES AND COVERS SHALL BE 24" STANDARD STEEL PIPE SET IN AT TOP OF CURB.  
 7. ALL STANDARD MANHOLE FRAMES AND COVERS SHALL BE 24" STANDARD STEEL PIPE SET IN AT TOP OF CURB.  
 8. ALL STANDARD MANHOLE FRAMES AND COVERS SHALL BE 24" STANDARD STEEL PIPE SET IN AT TOP OF CURB.  
 9. ALL STANDARD MANHOLE FRAMES AND COVERS SHALL BE 24" STANDARD STEEL PIPE SET IN AT TOP OF CURB.  
 10. ALL STANDARD MANHOLE FRAMES AND COVERS SHALL BE 24" STANDARD STEEL PIPE SET IN AT TOP OF CURB.

**PROFILE ALIGNMENT AND GRADE OF  
 SANITARY SEWERS  
 TO BE CONSTRUCTED IN  
 CONDON STREET  
 BETWEEN 154<sup>TH</sup> ST AND 153<sup>RD</sup> PLACE  
 154<sup>TH</sup> STREET  
 BETWEEN CONDON ST AND INGLEWOOD AVE.  
 153<sup>RD</sup> PLACE  
 BETWEEN CONDON ST AND INGLEWOOD AVE.  
 TRACT NO. 17236**

**PRIVATE CONTRACT NO. 1559  
 W.S. 25  
 SHEET 1 OF 1 SHEETS**

PREPARED IN THE OFFICE OF  
**KARL F. TUTTLE**  
 OCT. 1950



Part of TRACT No. 6578 Superseded  
 by Tract No. 17236  
 Revision approved 2/28/51  
 H.L. Swales

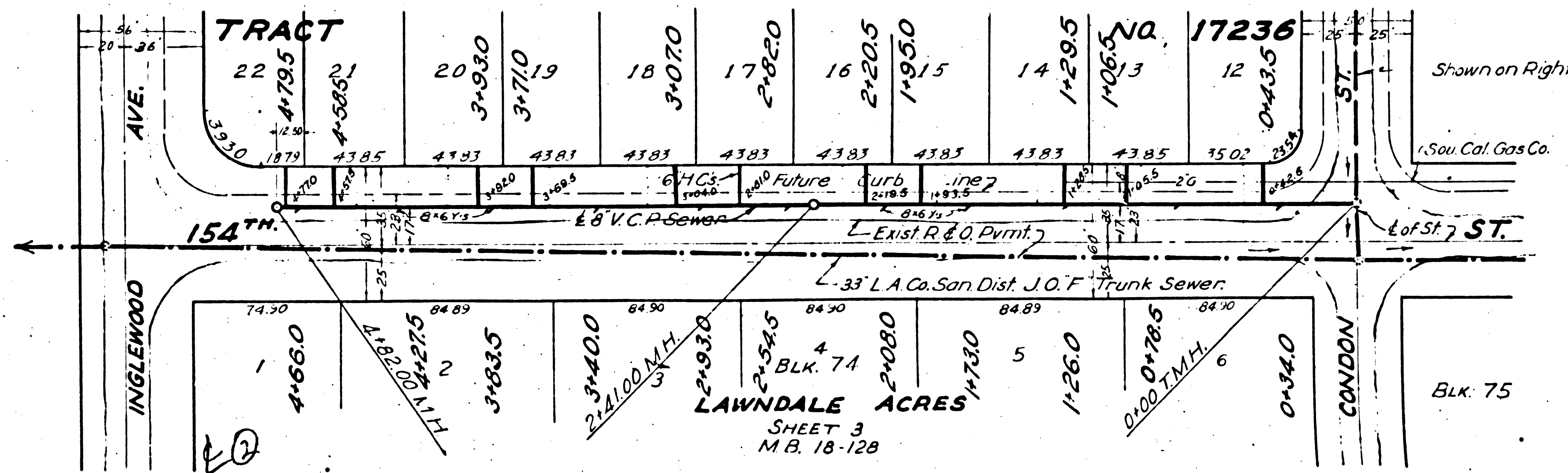
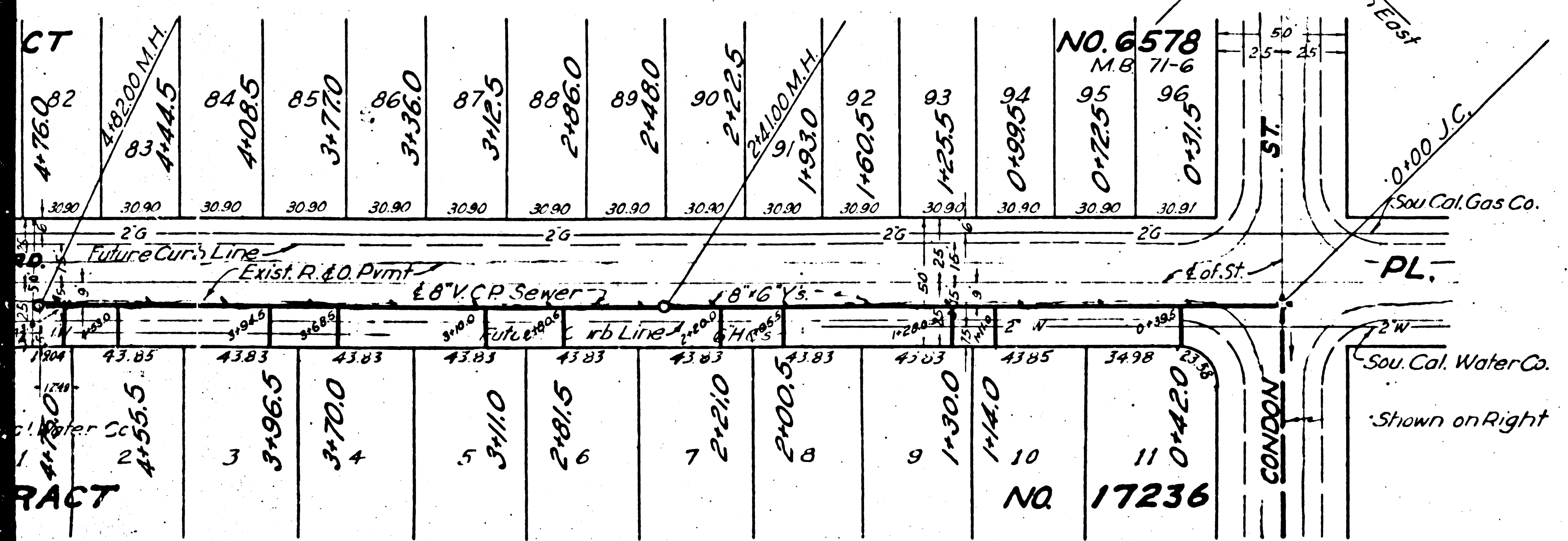
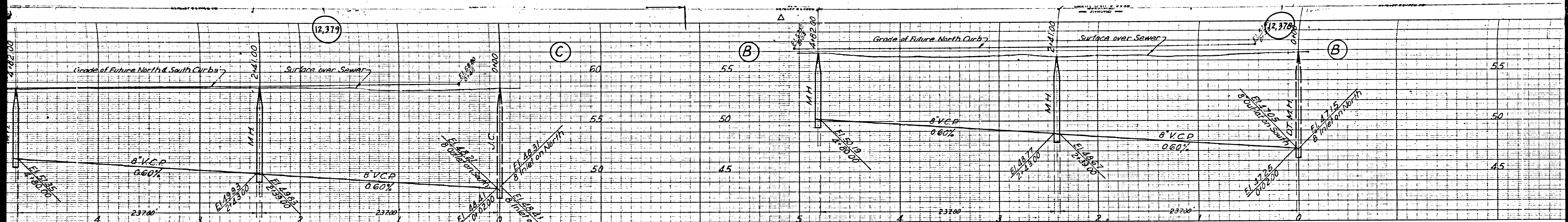
REVISED: *1/6/51*

**FOR LEGEND**  
 1. ALL STANDARD MANHOLE FRAMES AND COVERS SHALL BE 24" STANDARD STEEL PIPE SET IN AT TOP OF CURB.  
 2. ALL STANDARD MANHOLE FRAMES AND COVERS SHALL BE 24" STANDARD STEEL PIPE SET IN AT TOP OF CURB.  
 3. ALL STANDARD MANHOLE FRAMES AND COVERS SHALL BE 24" STANDARD STEEL PIPE SET IN AT TOP OF CURB.  
 4. ALL STANDARD MANHOLE FRAMES AND COVERS SHALL BE 24" STANDARD STEEL PIPE SET IN AT TOP OF CURB.  
 5. ALL STANDARD MANHOLE FRAMES AND COVERS SHALL BE 24" STANDARD STEEL PIPE SET IN AT TOP OF CURB.  
 6. ALL STANDARD MANHOLE FRAMES AND COVERS SHALL BE 24" STANDARD STEEL PIPE SET IN AT TOP OF CURB.  
 7. ALL STANDARD MANHOLE FRAMES AND COVERS SHALL BE 24" STANDARD STEEL PIPE SET IN AT TOP OF CURB.  
 8. ALL STANDARD MANHOLE FRAMES AND COVERS SHALL BE 24" STANDARD STEEL PIPE SET IN AT TOP OF CURB.  
 9. ALL STANDARD MANHOLE FRAMES AND COVERS SHALL BE 24" STANDARD STEEL PIPE SET IN AT TOP OF CURB.  
 10. ALL STANDARD MANHOLE FRAMES AND COVERS SHALL BE 24" STANDARD STEEL PIPE SET IN AT TOP OF CURB.

COUNTY OF LOS ANGELES, CALIFORNIA  
 APPROVED BY *Karl F. Tuttle* COUNTY ENGINEER  
 APPROVED BY *H.L. Swales* OFFICE ENGINEER  
 MAR 7 1951

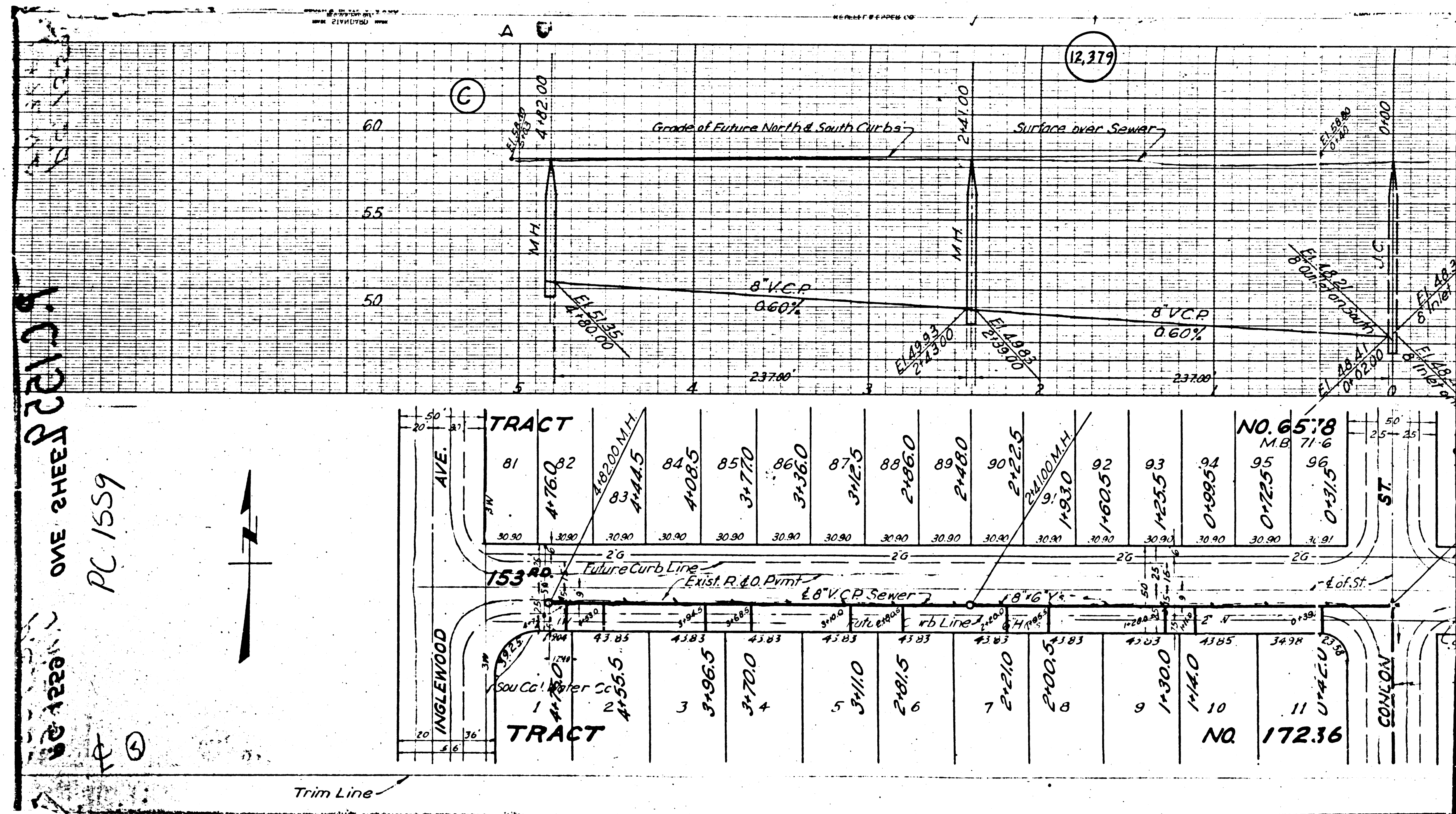
checked - 4-16-51 *H.L. Swales*  
 Trim Line





LAWDALE ACRES  
SHEET 3  
M.B. 18-128





VE ARRON OVE SHEE PC 1559

