

**11,993**

- 1 Use standard manhole frame and cover, S-a-117
- 2 Use standard strength pipe
- 3 Use cement mortar for all vitrified clay pipe joints
- 4 Reinforce all joints within covered areas to meet Los Angeles County Road Dept. or California State Highway Requirements
- 5 Construct basins, connections with invert at property line
- 6 5-foot below curb grade
- 7 Encase base of sewer at points of interference with poles on per. S-a-117
- 8 All structures shall be brick sewer structures S-a-104
- 9 Construct top of all structures in rights of way 2' above finished grade.

Note: No representative of the County Engineer will survey or layout any part of the work. The owner or his authorized representative shall furnish the County Engineer with grade sheets and stations of all house connections and Y branches and shall provide stakes for them at these proper locations with instructions clearly marked. Any change of location shall be requested in writing by the owner or his representative.

No revision shall be made in these plans without the approval of the County Engineer.

Note: Provide stakes on the property lines or property lines produced at right angles to the sewer line at the center line of each manhole.

**PROFILE, ALIGNMENT AND GRADE OF SANITARY SEWERS TO BE CONSTRUCTED IN**

(A) WILLMONTA AVENUE BETWEEN BOGUE STREET AND DUFFY STREET

(B) DUFFY STREET BETWEEN WILLMONTA AVENUE AND BALDWIN AVENUE

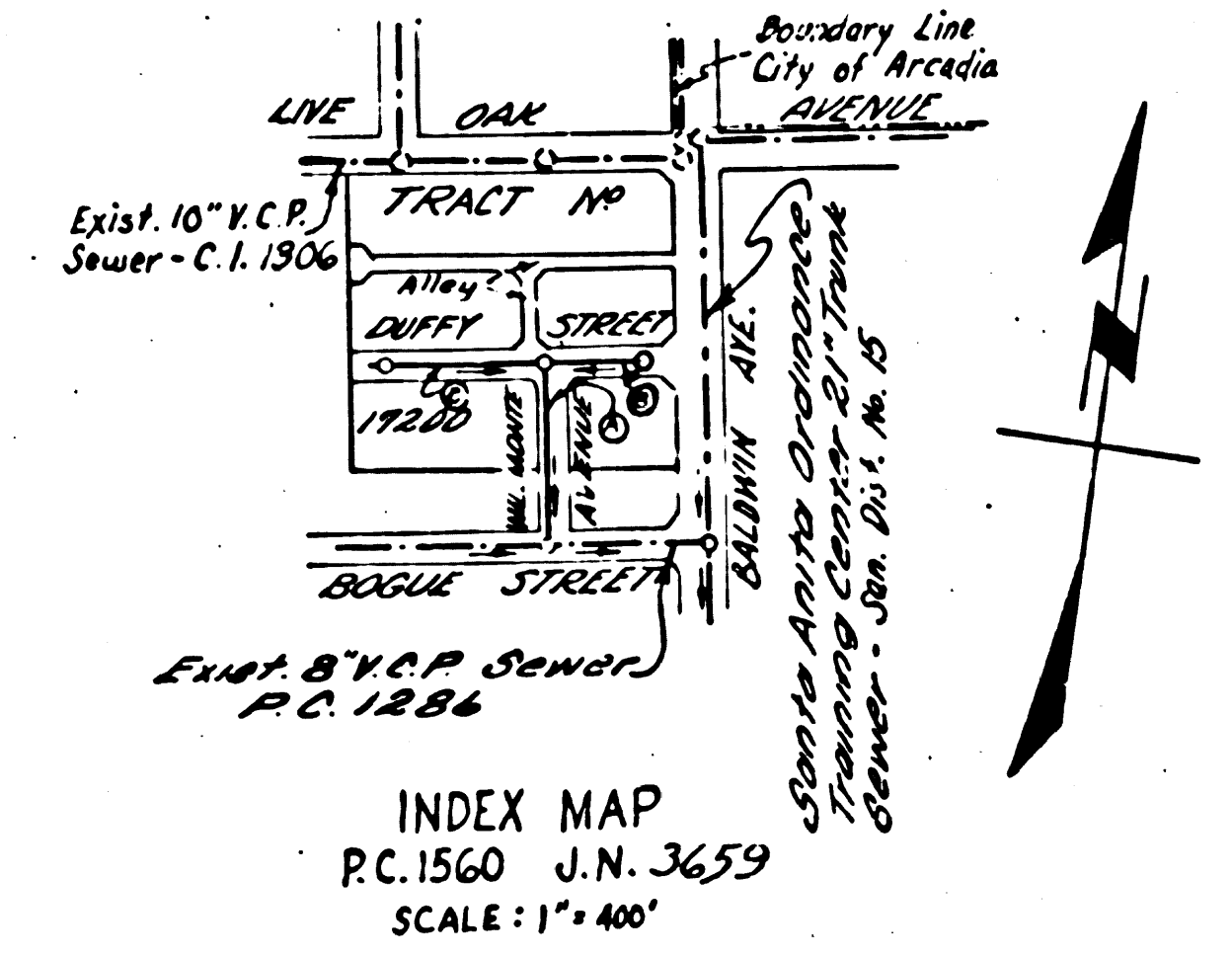
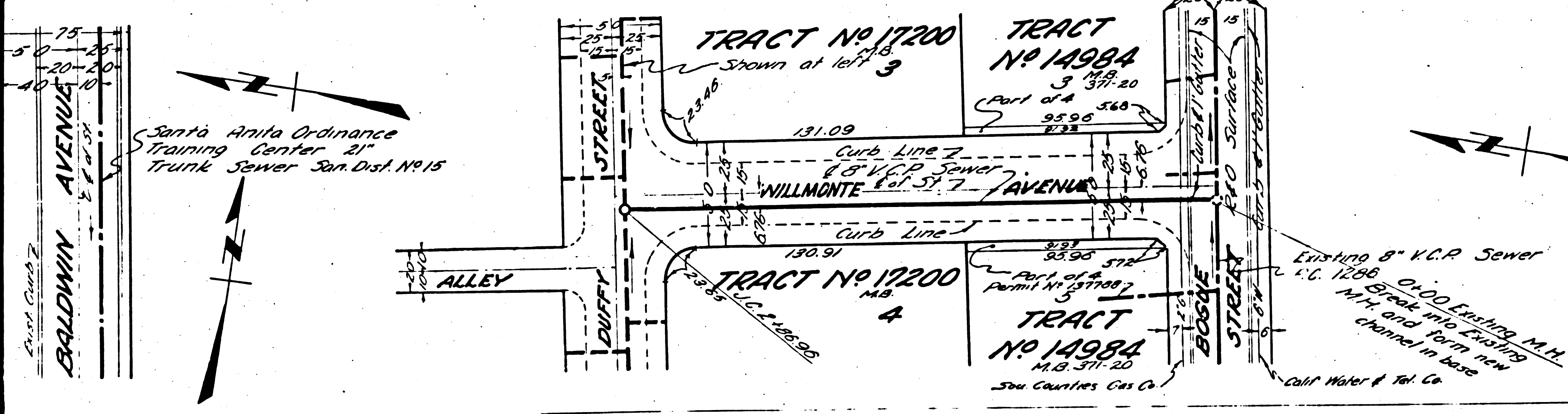
(C) DUFFY STREET BETWEEN WILLMONTA AVENUE AND WESTERLY LINE OF TRACT NO. 17200, M.B. IN TRACT NO. 17200, M.B. PRIVATE CONTRACT NO. 1580

W.S. 44

**SHEET 1 OF 1 SHEET**

SCALE: VERT. 1"=4'  
HORIZ. 1"=40'

NOVEMBER 1950



PREPARED BY Leon W. Miller Reg. C.E. No. 3151

**FOR LEGEND**  
See Plan No. S-a-84

Note: Grades to which the improvement is to be constructed are shown on plans and profile. Grade points for top of curb, center line of street or center line of alley are shown by circles on profile. At all points between designated curbs the grade shall be interpolated so as to conform to a straight line drawn between said designated points. Elevation are in feet above U.S.G.S. datum or mean sea level. The drawing and the herein are made a part of the specifications. Work shall be constructed according to specifications on file in the office of the County Engineer and shall be provided only in the presence of the County Engineer. Before work can be started the contractor must obtain a permit to excavate in County Street from the L.A. County Road Dept. 2414 Main Street, and make a deposit with the County Engineer, 228 L.A. County Engineering Bldg, sufficient to cover cost of construction inspection and reports. Approval of this plan by the County of Los Angeles does not constitute a representation as to the accuracy of the location of or the existence or non-existence of any underground utility, pipe or structure within the limits of this project.

**COUNTY OF LOS ANGELES, CALIFORNIA**  
AM RAWN  
APPROVED BY [Signature] COUNTY ENGINEER  
APPROVED BY [Signature] OFFICE ENGINEER  
CHECKED BY [Signature] NOV. 22, 1950  
WORK OF COUNTY ENGINEER REG. C.E. NO. 3151

Nov 21-51 Miller

