

BENCHMARK -
 W. J. Dept. B.M. N. 81, Elev. = 347.35
 I.B. 10 1/4" dia. L. Lead & nail in
 top of well of fountain at S.W.
 corner Sunset Ave. & Broadway
 Co. Survey B.M. T.E. 40, Elev. = 350.217
 at I.E. cor. Agnes Ave. & Olive St.
 equals Elev. 350.35 Rd. Dept. datum

1. USE STANDARD MANHOLE FRAME AND COVER, 30" I.D.
2. USE STANDARD STRENGTH PIPE EXCEPT AS NOTED.
3. MANHOLES - PORTLAND CEMENT WITH 2" DEEP POLY-BANKING
4. RESURFACE ALL TRENCH WITHIN PAVED AREA TO MEET LOS ANGELES COUNTY ROAD DEPT. REQUIREMENTS IN ACCORDANCE WITH THE PERMIT.
5. CONSTRUCT HOUSE CONNECTIONS WITH INVERT AT PROPERTY LINE 5 FEET BELOW CURB GRADE, EXCEPT AS NOTED.
6. ENGAGE FOUR FEET OF SEWER AT POINTS OF INTERFERENCE WITH EXISTING SEWER 3" O.D.
7. ALL STRUCTURES SHALL BE BRICK SEWER STRUCTURES, 5' O.D.

NOTE: No representative of the County Engineer will survey or lay out any part of this work.
 The owner or his authorized representative shall furnish the County Engineer with grade stakes and stations for all house connections and Y branches and shall provide stakes for them at their proper locations with chaining plainly marked. Any change of location shall be requested in writing by the owner or his representative.
 No revisions shall be made in these plans without approval of the County Engineer.
 Provide stakes on the property lines or property lines produced at right angles to the sewer line at the center line of each manhole.

**PROFILE, ALIGNMENT AND GRADE OF
 SANITARY SEWERS
 TO BE CONSTRUCTED IN
 CAMBURY ST.
 BETWEEN OLIVE ST. AND NADINE ST.
 NADINE ST.
 BETWEEN 330 FT. WEST AND 360 FT. EAST OF CAMBURY AVE.
 IN TRACT NO. 17002**

**PRIVATE CONTRACT NO. 1563
 W.S. 44
 ONE SHEET**

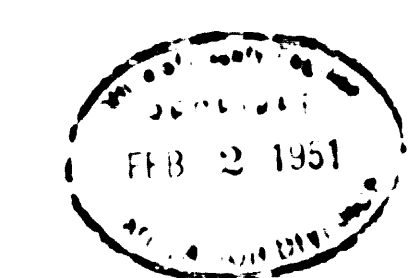
SCALE: VERT. 1" = 4'
 HORIZ. 1" = 40'

PREPARED IN THE OFFICES OF: *Oliver E. Johnston*
 L.S. No. 2311

CHECKED BY: *N.B. Smith*
 REG. C.E. No. 2301.

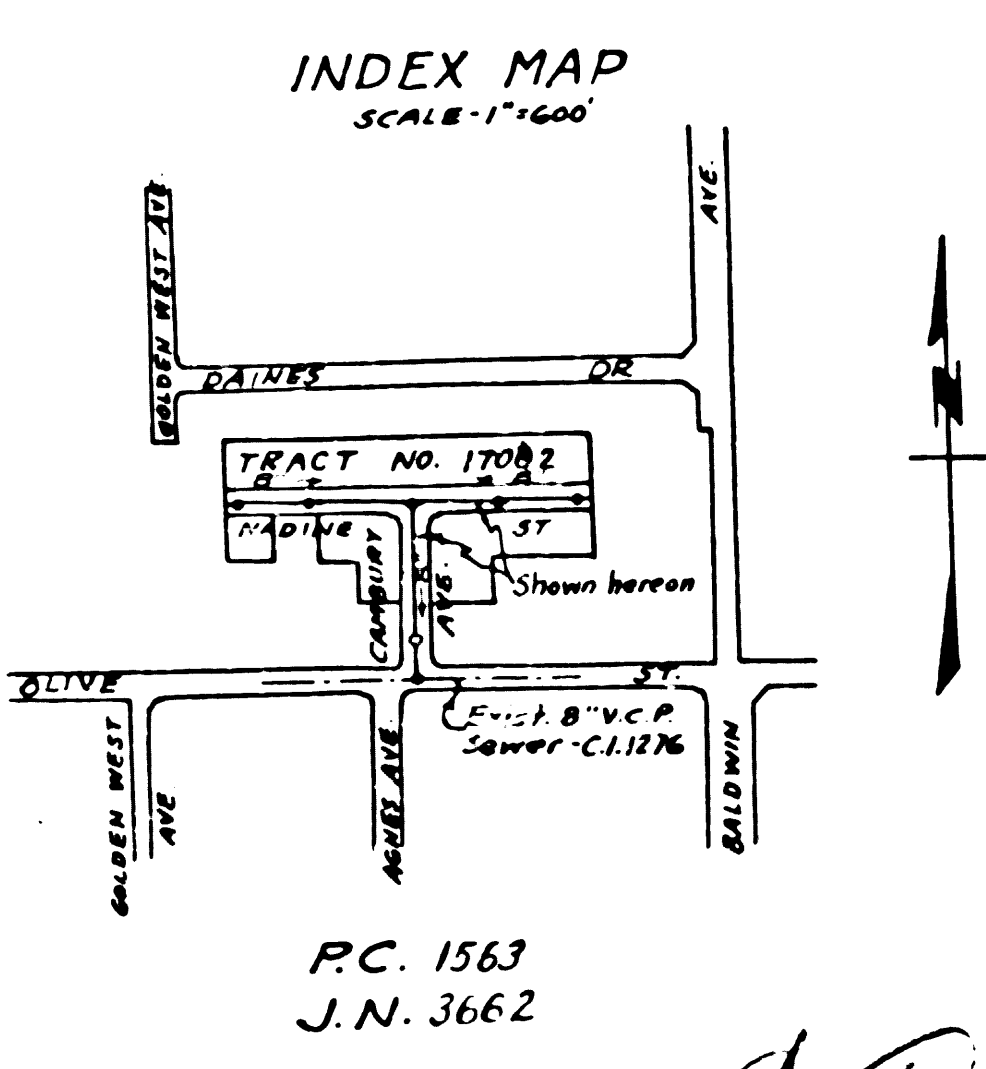
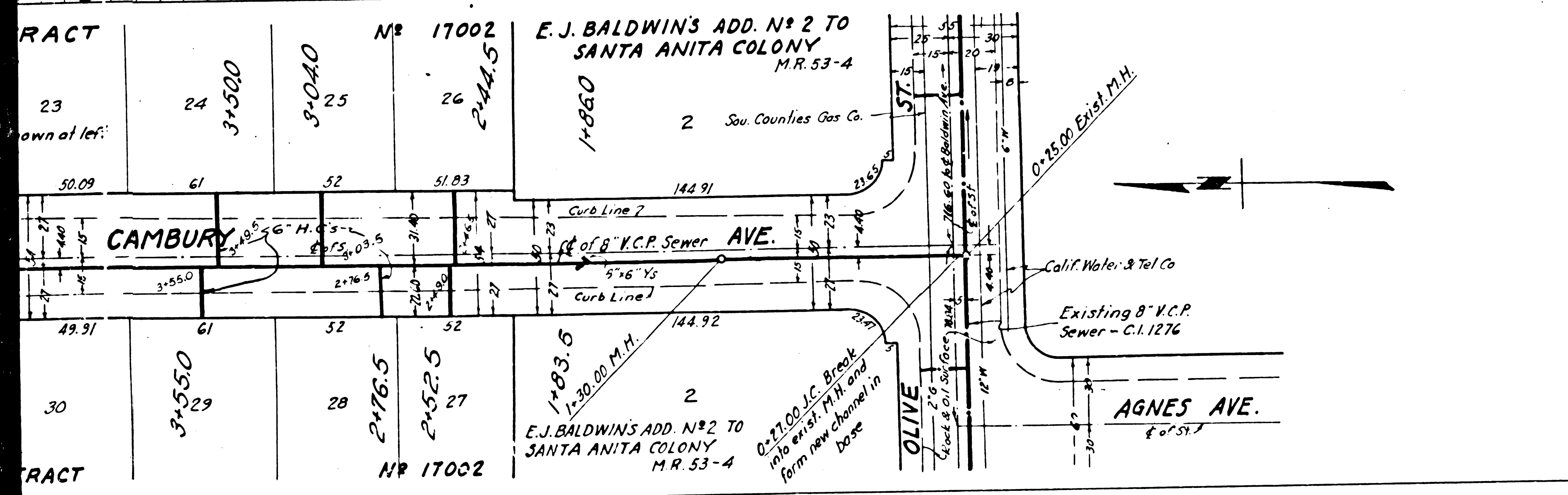
FOR LEGEND
 SEE PLAN N15-04

NOTE:
 Grades to which this improvement is to be constructed are shown on plans and profile. Grade points for top of curb, center line of Street or center line of Alley are shown by circles on profiles. All points between designated points the grade shall be established so as to conform to a straight line drawn between said designated points.
 Elevations are in feet above U.S. G.S. datum or mean sea level.
 This drawing and the data hereon are hereby made a part of the specifications.
 Work shall be constructed according to specifications on file in the office of the County Engineer and shall be prosecuted only in the presence of the County Engineer.
 Before work can be started, the contractor must obtain a permit to excavate in County streets from the L.A. County Road Dept. 100 W. 2nd Street and make a deposit with the County Engineer, 910 L.A. County Engineering Bldg., sufficient to cover the cost of construction inspection and record plans.
 Approval of this plan by the County of Los Angeles does not constitute a representation as to the accuracy of the location of, or the existence or non-existence of, any underground utility, pipe or structure within the limits of this project.

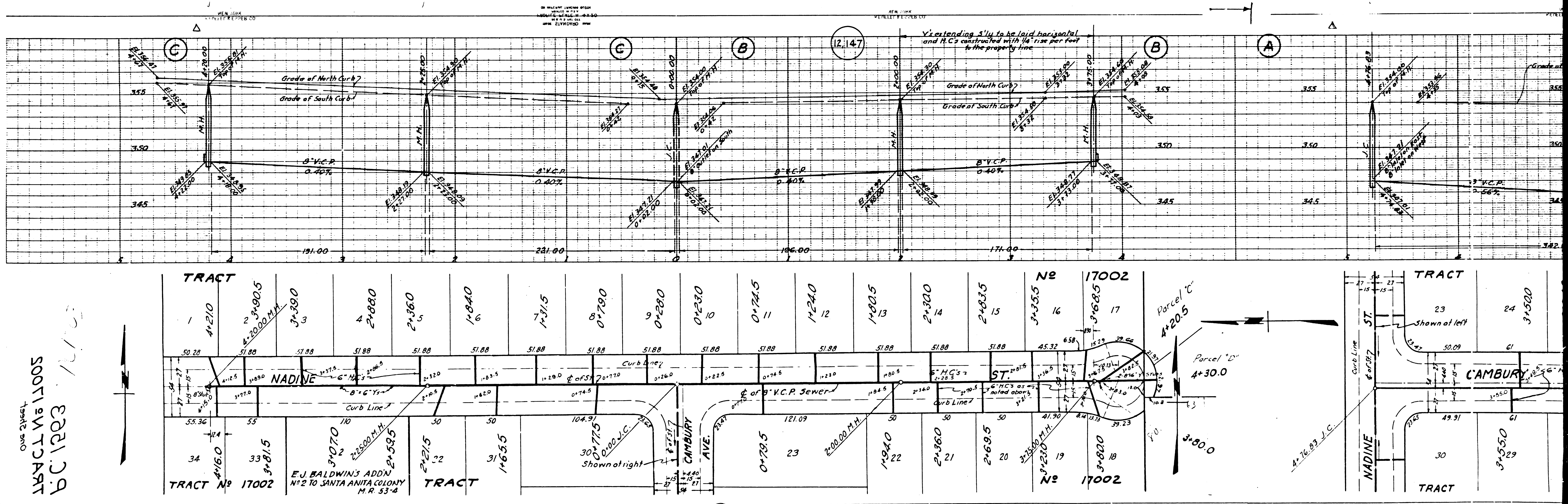


APPROVED: *A.H. Gregory*
 CHIEF COUNTY ENGINEER

APPROVED BY: *A.M. RAWN*
 OFFICE ENGINEER
 CHIEF ENGINEER COUNTY SANITATION DISTRICT NO. 15
 CHECKED BY: *G.E. Johnston*
 1950
 OFFICE OF COUNTY ENGINEER, REG. C.E. No. 7675



TRACT 17002
 D.C. 1203



TRACT 17002
 SOUTH PART
 B.C. 1283

10