

B.M. F. (2,973) 282 L.A.N. in N.E.  
Curb Ret. at Morgan Dr. & Benavon St.

- (1) USE STANDARD MANHOLE FRAME AND COVER 5-8-117.
- (2) USE CEMENT MORTAR FOR ALL VITRIFIED CLAY PIPE JOINTS.
- (3) RESURFACE ALL TRENCH WITHIN PAVED AREA TO MEET LOS ANGELES COUNTY ROAD DEPT. REQUIREMENTS IN ACCORDANCE WITH PERMIT.
- (4) ALL STRUCTURES SHALL BE BRICK SEWER STRUCTURES 5-2-104.
- (5) ENCASE FOUR FEET OF SEWER AT POINTS OF INTERFERENCE WITH POLES AS PER 5-2-119.

NOTE: NO REPRESENTATIVE OF THE COUNTY ENGINEER WILL SURVEY OR LAY OUT ANY PORTION OF THE WORK. THE OWNER OR HIS REPRESENTATIVE SHALL FURNISH THE COUNTY ENGINEER WITH GRADE SHEETS AND STATIONS OF HOUSE CONNECTIONS AND BRANCHES AND SHALL PROVIDE STAKES FOR THEM AT THE PROPER LOCATIONS WITH STATIONS PLAINLY MARKED.

NO REVISION SHALL BE MADE WITHOUT THE APPROVAL OF THE COUNTY ENGINEER. PROVIDE STAKES ON THE PROPERTY LINE OR PROPERTY LINE PRODUCE AT RIGHT ANGLED TO THE SEWER LINE AT THE CENTER LINE OF EACH MANHOLE.

ANY CHANGE OF LOCATION SHALL BE REQUESTED IN WRITING BY THE OWNER OR HIS REPRESENTATIVE.

PROFILE, ALIGNMENT AND GRADE OF  
**SANITARY SEWERS**  
TO BE CONSTRUCTED IN  
**BENAVON ST.**  
BETWEEN MILLER GROVE DR. AND VICKI DR.  
**SANITARY SEWER RIGHT OF WAY**

A PORTION OF THE RANCHO PASO DE BARTOLO  
AS PER MAP BOOK 3, PAGES 130-131 OF PATENTS  
RECORDS OF LOS ANGELES COUNTY FOR  
LOS NIETOS SCHOOL DISTRICT.

PRIVATE CONTRACT NO 1564  
W.S. 36  
SHEET 1 OF 1

SCALE: VERT. 1" = 4'  
HORIZ. 1" = 40'

November 9, 1950

PREPARED IN THE OFFICES OF  
**WILLIAM H. HARRISON, A.I.A., ARCHITECT**

By: *Henry M. Layne*  
REG. C.E. NO. 5478

FOR LEGEND  
SEE PLAN NO. 5-2-64

NOTE: GRADES TO WHICH THIS IMPROVEMENT IS TO BE CONSTRUCTED ARE SHOWN ON PLANS AND PROFILE. GRADE POINTS FOR TOP OF CURB, CENTER LINE OF STREET OR CENTER LINE OF ALLEY ARE SHOWN BY CIRCLES ON PROFILES. AT ALL POINTS BETWEEN DESIGNATED POINTS THE GRADE SHALL BE ESTABLISHED SO AS TO CONFORM TO A STRAIGHT LINE DRAWN BETWEEN SAID DESIGNATED POINTS.

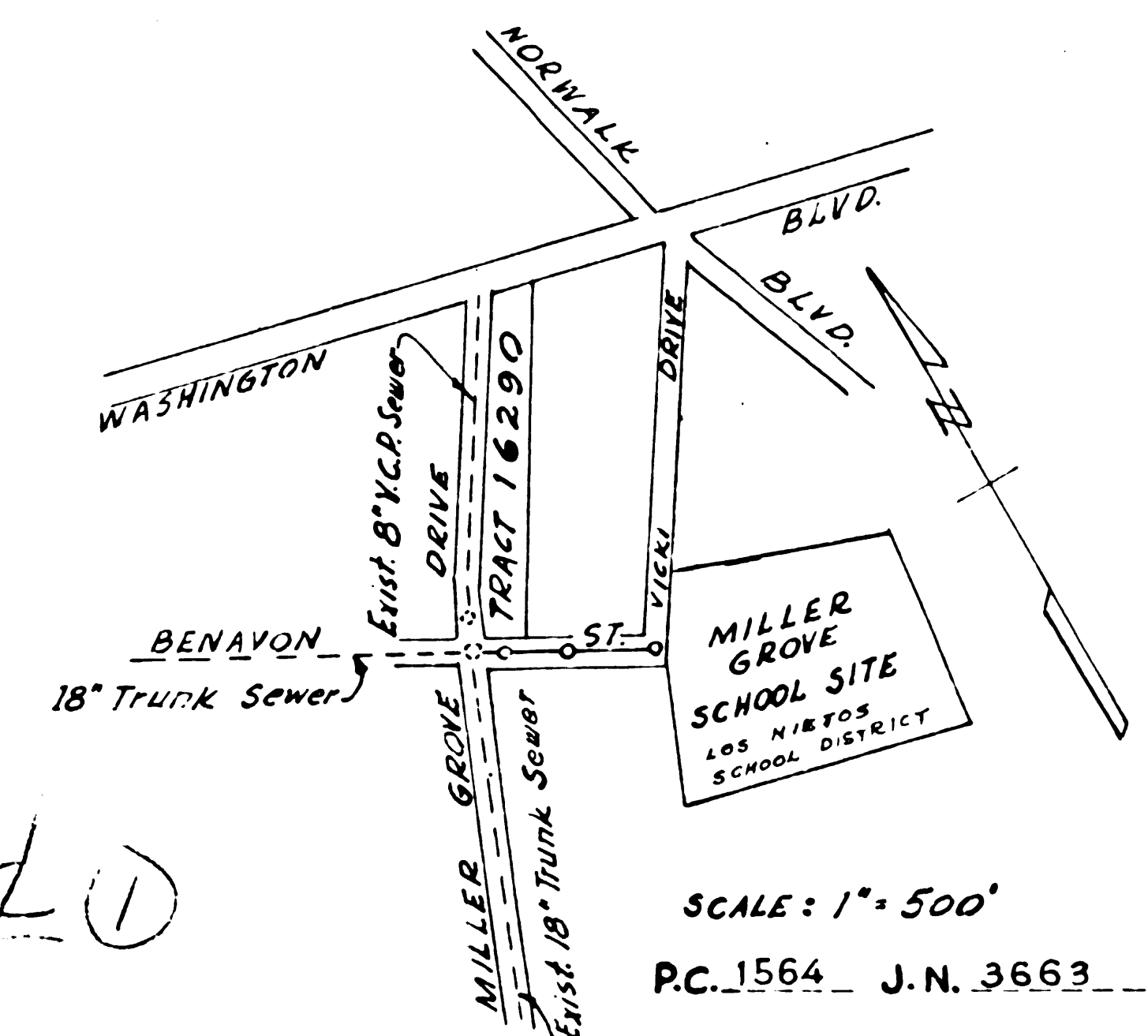
ELEVATIONS ARE IN FEET ABOVE U.S. 0-3 DATUM OR MEAN SEA LEVEL.

THIS DRAWING AND THE DATA HEREON ARE HEREBY MADE A PART OF THE SPECIFICATIONS. WORK SHALL BE CONSTRUCTED ACCORDING TO SPECIFICATIONS ON FILE IN THE OFFICE OF THE COUNTY ENGINEER AND SHALL BE PROSECUTED ONLY IN THE PRESENCE OF THIS COUNTY ENGINEER. BEFORE WORK CAN BE STARTED, THE CONTRACTOR MUST OBTAIN A PERMIT TO EXCAVATE IN COUNTY STREETS FROM THE L.A. COUNTY ROAD DEPT., IN SO MAIN STREET, AND MAKE A DEPOSIT WITH THE COUNTY ENGINEER, 825 L.A. COUNTY ENGINEER'S BUILDING, SUFFICIENT TO COVER THE COST OF CONSTRUCTION INSPECTION AND RECORD PLANS.

APPROVAL OF THIS PLAN BY THE COUNTY OF LOS ANGELES DOES NOT CONSTITUTE A REPRESENTATION AS TO THE ACCURACY OF THE LOCATION OF OR THE EXISTENCE OR NON-EXISTENCE OF ANY UNDERGROUND UTILITY, PIPE OR STRUCTURE WITHIN THE LIMITS OF THIS PROJECT.

COUNTY OF LOS ANGELES, CALIFORNIA  
APPROVED: *[Signature]* COUNTY ENGINEER  
APPROVED BY: *[Signature]* OFFICE ENGINEER  
CHIEF ENGINEER OF COUNTY SANITATION DISTRICT NO. 18

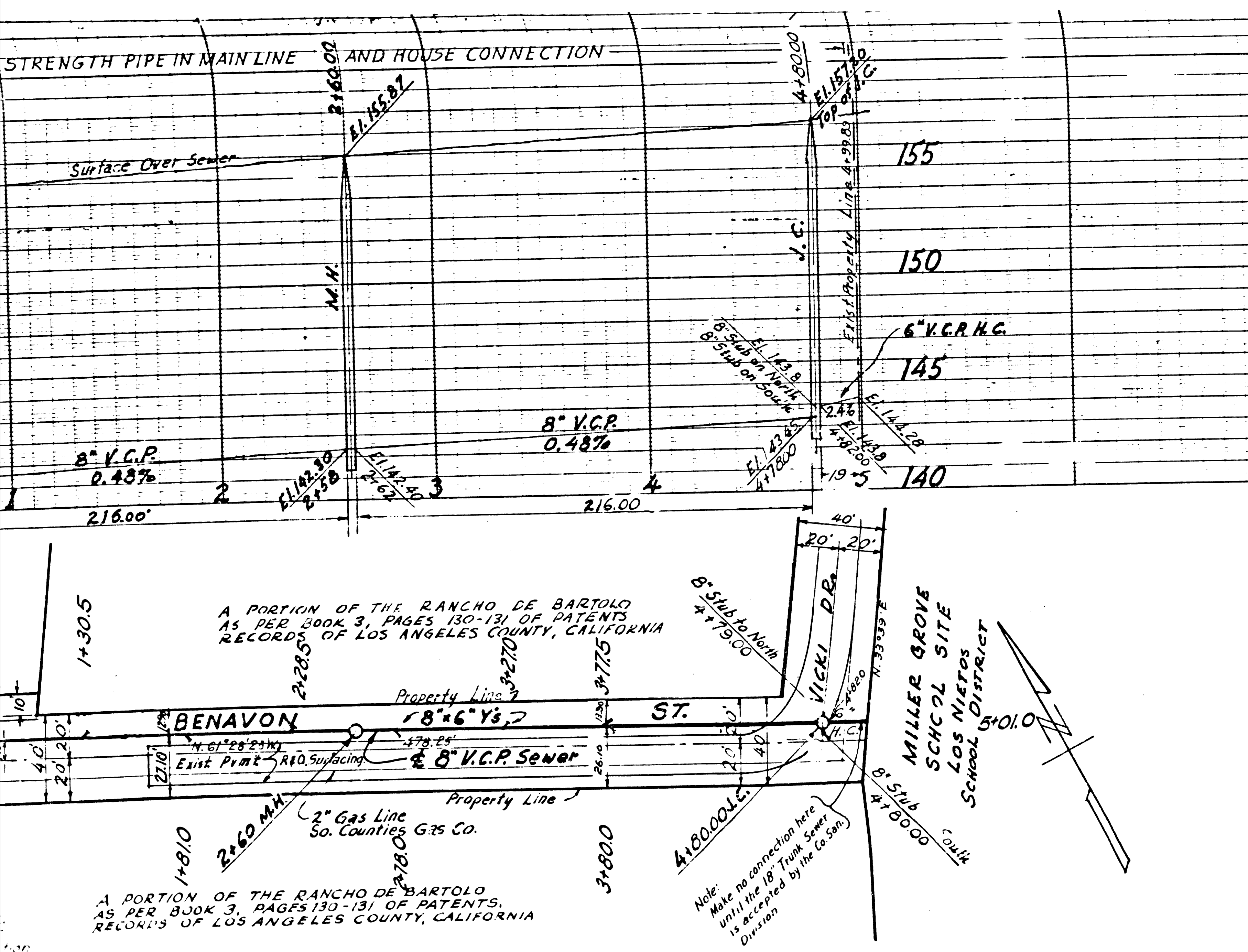
CHECKED BY: *[Signature]* 1950  
OFFICE OF COUNTY ENGINEER C.E. NO. 412



A PORTION OF THE RANCHO DE BARTOLO  
AS PER BOOK 3, PAGES 130-131 OF PATENTS,  
RECORDS OF LOS ANGELES COUNTY, CALIFORNIA

A PORTION OF THE RANCHO DE BARTOLO  
AS PER BOOK 3, PAGES 130-131 OF PATENTS  
RECORDS OF LOS ANGELES COUNTY, CALIFORNIA

Note: Make no connection here  
until the 18" Trunk Sewer  
is accepted by the Gas  
Division



B.M. E. 2573 282 L.A.N. in N.E.  
Curb Re. Miller Grove Dr. & Benavon St.

- (1) USE STANDARD MANHOLE FRAME AND COVER 5'-8-117.
- (2) USE CEMENT MORTAR FOR ALL VITRIFIED CLAY PIPE JOINTS.
- (3) RESURFACE ALL TRENCH WITHIN PAVED AREA TO MEET LOS ANGELES COUNTY ROAD DEPT. REQUIREMENTS IN ACCORDANCE WITH PERMIT.
- (4) ALL STRUCTURES SHALL BE BRICK SEWER STRUCTURES 5'-8-104.
- (5) ENCASE FOUR FEET OF SEWER AT POINTS OF INTERFERENCE WITH POLES AS PER 5'-8-119.

NOTE: NO REPRESENTATIVE OF THE COUNTY ENGINEER WILL SURVEY OR LOCATE ANY PORTION OF THE WORK. THE OWNER OR HIS REPRESENTATIVE SHALL FURNISH THE COUNTY ENGINEER WITH GRADE SHEETS AND STATIONS OF HOUSE CONNECTION AND Y-BRANCHED AND SHALL PROVIDE STAKES FOR THEM AT THE PROPER LOCATIONS WITH STATIONS PLAINLY MARKED. NO REVISION SHALL BE MADE WITHOUT THE APPROVAL OF THE COUNTY ENGINEER. PROVIDE STAKES ON THE PROPERTY LINE OR PROPERTY LINE PRODUCED AT RIGHT ANGLES TO THE SEWER LINE AT THE CENTER LINE OF EACH MAN-HOLE. ANY CHANGE OF LOCATION SHALL BE REQUESTED IN WRITING BY THE OWNER OR HIS REPRESENTATIVE.

PROFILE, ALIGNMENT AND GRADE OF  
**SANITARY SEWERS**  
 TO BE CONSTRUCTED IN  
**BENAVON ST.**  
 BETWEEN MILLER GROVE DR. AND VICKI DR.  
**SANITARY SEWER RIGHT OF WAY**  
 A PORTION OF THE RANCHO PASO DE BARTOLO  
 AS PER MAP BOOK 3, PAGES 130-131 OF PATENTS  
 RECORDS OF LOS ANGELES COUNTY FOR  
 LOS NIÑOS SCHOOL DISTRICT.

PRIVATE CONTRACT NO. 1564  
 W.S. 36  
 SHEET 1 OF 1  
 November 9, 1950

PREPARED IN THE OFFICES OF  
**WILLIAM H. HARRISON, A.I.A., ARCHITECT**

By: *Harry M. Layne*

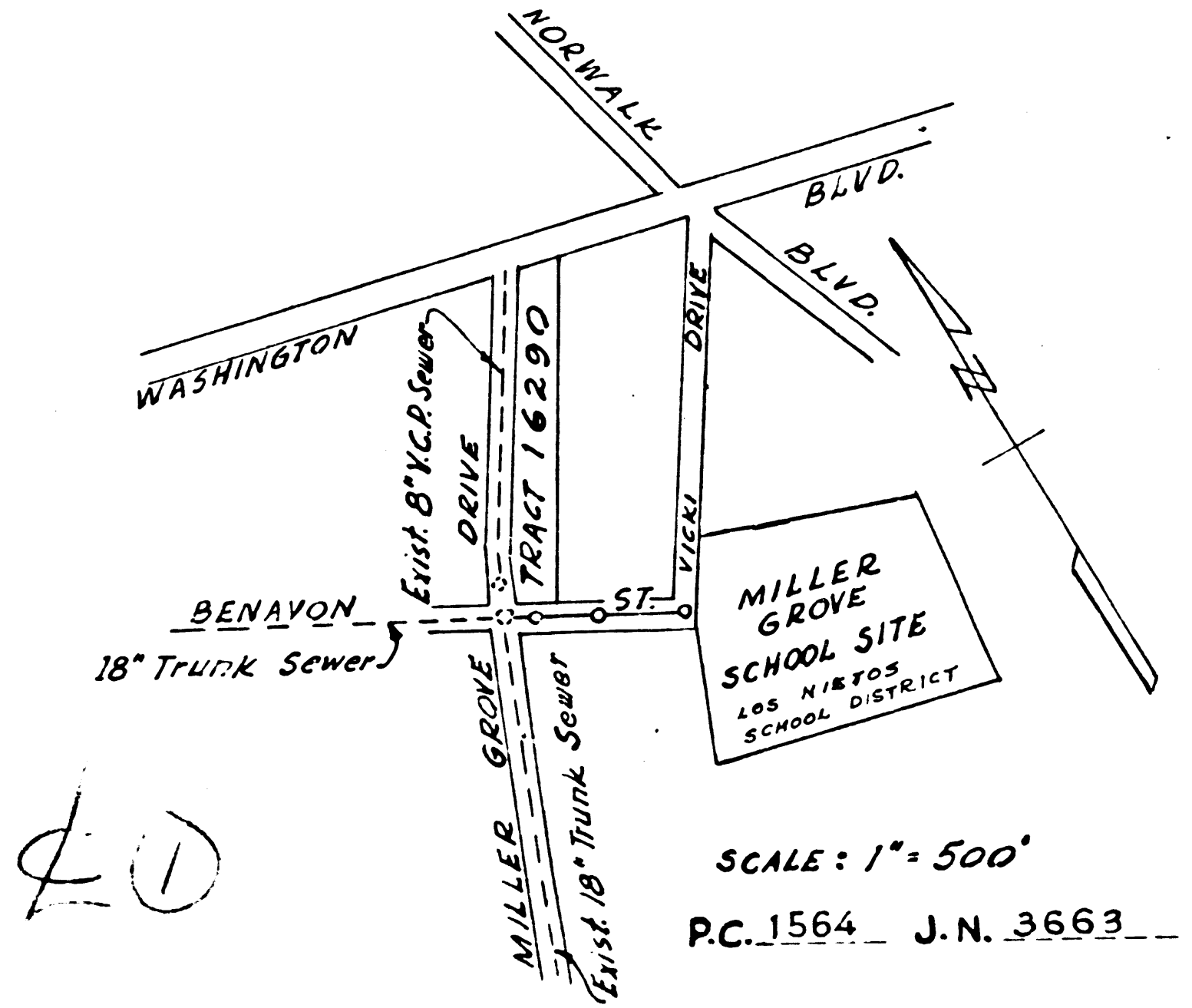
REG. C.E. NO. 5478



FOR LEGEND  
 SEE PLAN NO. 5-8-64

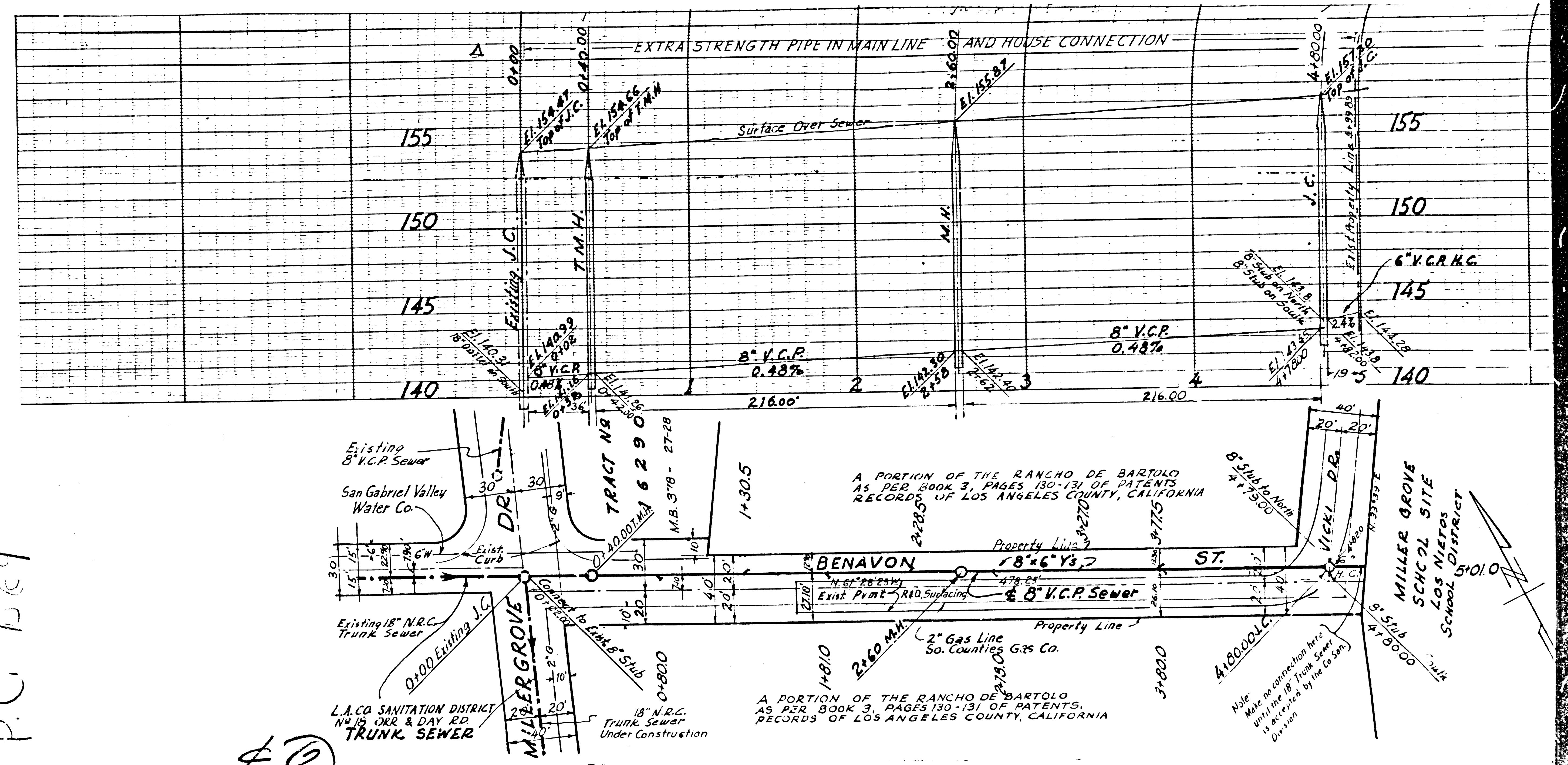
NOTE: GRADES TO WHICH THIS IMPROVEMENT IS TO BE CONSTRUCTED ARE SHOWN ON PLANS AND PROFILE. GRADE POINTS FOR TOP OF CURB, CENTER LINE OF STREET OR CENTER LINE OF ALLEY ARE SHOWN BY CIRCLES ON PROFILES. AT ALL POINTS BETWEEN DESIGNATED POINTS THE GRADE SHALL BE ESTABLISHED SO AS TO CONFORM TO A STRAIGHT LINE DRAWN BETWEEN SAID DESIGNATED POINTS. ELEVATIONS ARE IN FEET ABOVE U.S.C. & G.S. DATUM OR MEAN SEA LEVEL. THIS DRAWING AND THE DATA HEREON ARE HEREBY MADE A PART OF THE SPECIFICATIONS. WORK SHALL BE CONSTRUCTED ACCORDING TO SPECIFICATIONS ON FILE IN THE OFFICE OF THE COUNTY ENGINEER, AND SHALL BE PROSECUTED ONLY IN THE PRESENCE OF THE COUNTY ENGINEER. BEFORE WORK CAN BE STARTED, THE CONTRACTOR MUST OBTAIN A PERMIT TO SIGNATURE IN COUNTY STREETS FROM THE L.A. COUNTY ROAD DEPT., 211 SO. MAIN STREET, AND MAKE A DEPOSIT WITH THE COUNTY ENGINEER, 820 L.A. COUNTY ENGINEERING BLDG., SUFFICIENT TO COVER THE COST OF CONSTRUCTION INSPECTION AND RECORD PLANS. APPROVAL OF THIS PLAN BY THE COUNTY OF LOS ANGELES DOES NOT CONSTITUTE A REPRESENTATION AS TO THE ACCURACY OF THE LOCATION OF OR THE EXISTENCE OR NON-EXISTENCE OF ANY UNDERGROUND UTILITY, PIPE OR STRUCTURE WITHIN THE LIMITS OF THIS PROJECT.

COUNTY OF LOS ANGELES, CALIFORNIA  
 APPROVED: *Edmund* COUNTY ENGINEER  
 APPROVED BY: *M. J. ...* CHIEF ENGINEER OF COUNTY SANITATION DISTRICT NO. 18



SCALE: 1" = 500'  
 P.C. 1564 J.N. 3663

CHECKED BY: *H. L. ...* 1950  
 OFFICE OF COUNTY ENGINEER, C.E. 2612



P.C. 1564

②

Existing 8" V.C.P. Sewer  
 San Gabriel Valley Water Co.  
 Existing 18" N.R.C. Trunk Sewer  
 L.A. CO. SANITATION DISTRICT  
 1416 JOR & DAY RD.  
 TRUNK SEWER  
 MILLER GROVE  
 MILLER GROVE SCHOOL SITE  
 LOS NIÑOS SCHOOL DISTRICT  
 501.0'

A PORTION OF THE RANCHO DE BARTOLO  
 AS PER BOOK 3, PAGES 130-131 OF PATENTS  
 RECORDS OF LOS ANGELES COUNTY, CALIFORNIA

2" Gas Line  
 So. Counties Gas Co.  
 8" V.C.P. Sewer  
 Property Line

Note: Make no connection here  
 with the 18" Trunk Sewer  
 to be installed by the Gas Co.  
 During