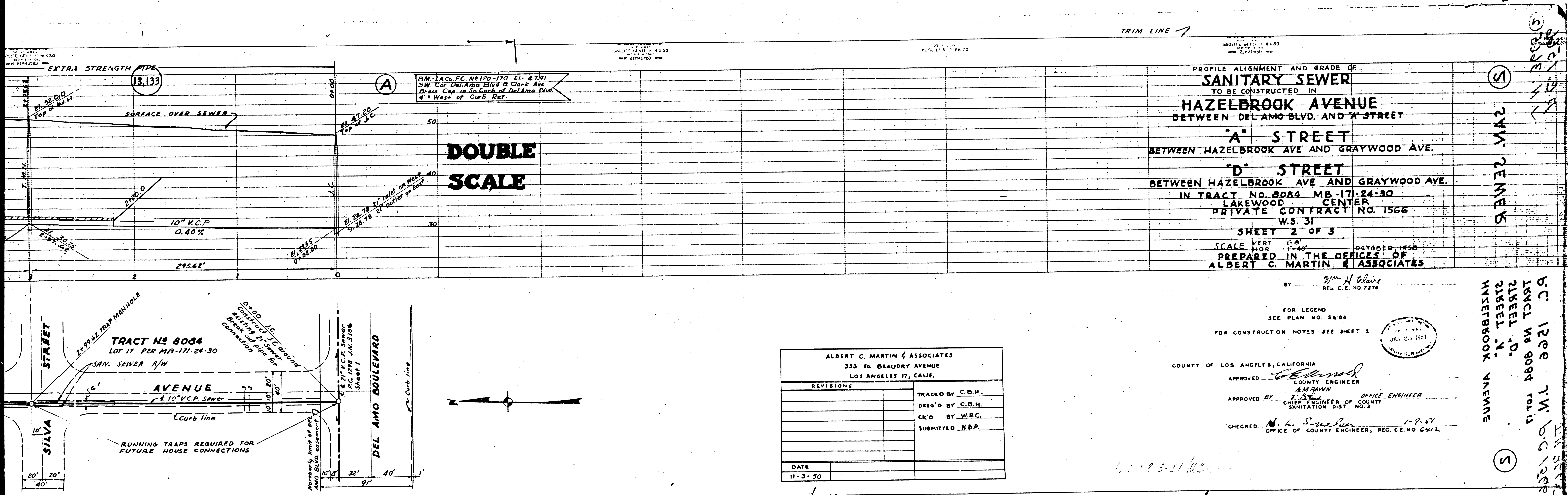


21+53.0
 18+26.0
 16+22.0
 15+29.0
 21+53.0
 18+26.0
 16+22.0
 15+29.0
 21+53.0
 18+26.0
 16+22.0
 15+29.0

21+53.0
 18+26.0
 16+22.0
 15+29.0
 21+53.0
 18+26.0
 16+22.0
 15+29.0
 21+53.0
 18+26.0
 16+22.0
 15+29.0

21+53.0
 18+26.0
 16+22.0
 15+29.0
 21+53.0
 18+26.0
 16+22.0
 15+29.0
 21+53.0
 18+26.0
 16+22.0
 15+29.0



DM. L.A.C. FC NO. 170-170 EL. 4.791
 SW Cor. Del Amo Blvd & Oak Ave
 Brass Cap in So. Curb of Del Amo Blvd
 4' West of Curb Ref.

**DOUBLE
SCALE**

PROFILE ALIGNMENT AND GRADE OF
SANITARY SEWER
 TO BE CONSTRUCTED IN
HAZELBROOK AVENUE
 BETWEEN DEL AMO BLVD. AND A STREET
A STREET
 BETWEEN HAZELBROOK AVE AND GRAYWOOD AVE.
D STREET
 BETWEEN HAZELBROOK AVE AND GRAYWOOD AVE.
 IN TRACT NO. 8084 MB-171-24-30
 LAKEWOOD CENTER
 PRIVATE CONTRACT NO. 1566
 W.S. 31
 SHEET 2 OF 3
 SCALE VERT. 1"=4'
 HORIZ. 1"=40'
 OCTOBER 1950
 PREPARED IN THE OFFICES OF
ALBERT C. MARTIN & ASSOCIATES

24 W. CENTER
 HAZELBROOK AVENUE

ALBERT C. MARTIN & ASSOCIATES 333 So. BEAUDRY AVENUE LOS ANGELES 17, CALIF.	
REVISIONS	TRACED BY C.B.H. DES'G'D BY C.B.H. CK'D BY W.R.C. SUBMITTED N.P.P.
DATE	11-3-50

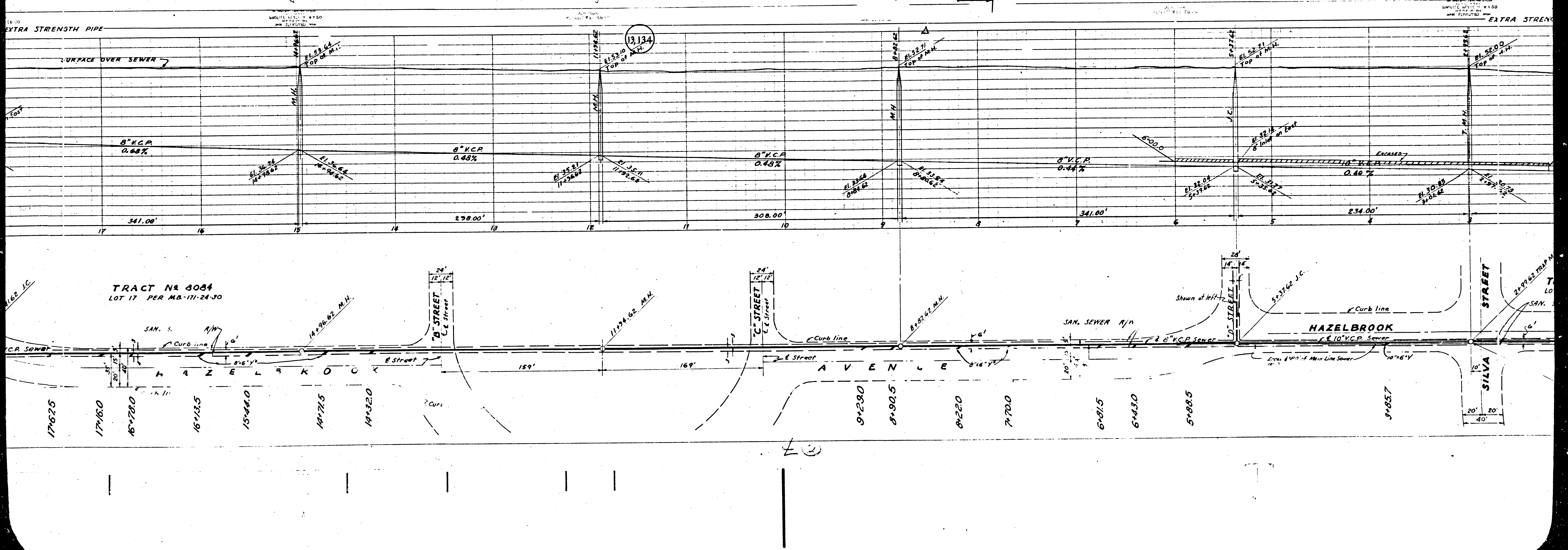
BY *Wm. H. Blair*
 REG. C.E. NO. 7276
 FOR LEGEND SEE PLAN NO. 54-64
 FOR CONSTRUCTION NOTES SEE SHEET 1
 COUNTY OF LOS ANGELES, CALIFORNIA
 APPROVED *[Signature]* COUNTY ENGINEER
 APPROVED BY *[Signature]* OFFICE ENGINEER
 CHIEF ENGINEER OF COUNTY SANITATION DIST. NO. 3
 CHECKED *[Signature]* 1-9-51
 OFFICE OF COUNTY ENGINEER, REG. CE. NO. 6472

B.C. 1200
 TRACT NO. 8084
 SHEET N.D.
 HAZELBROOK AVENUE
 24 W. CENTER
 HAZELBROOK AVENUE

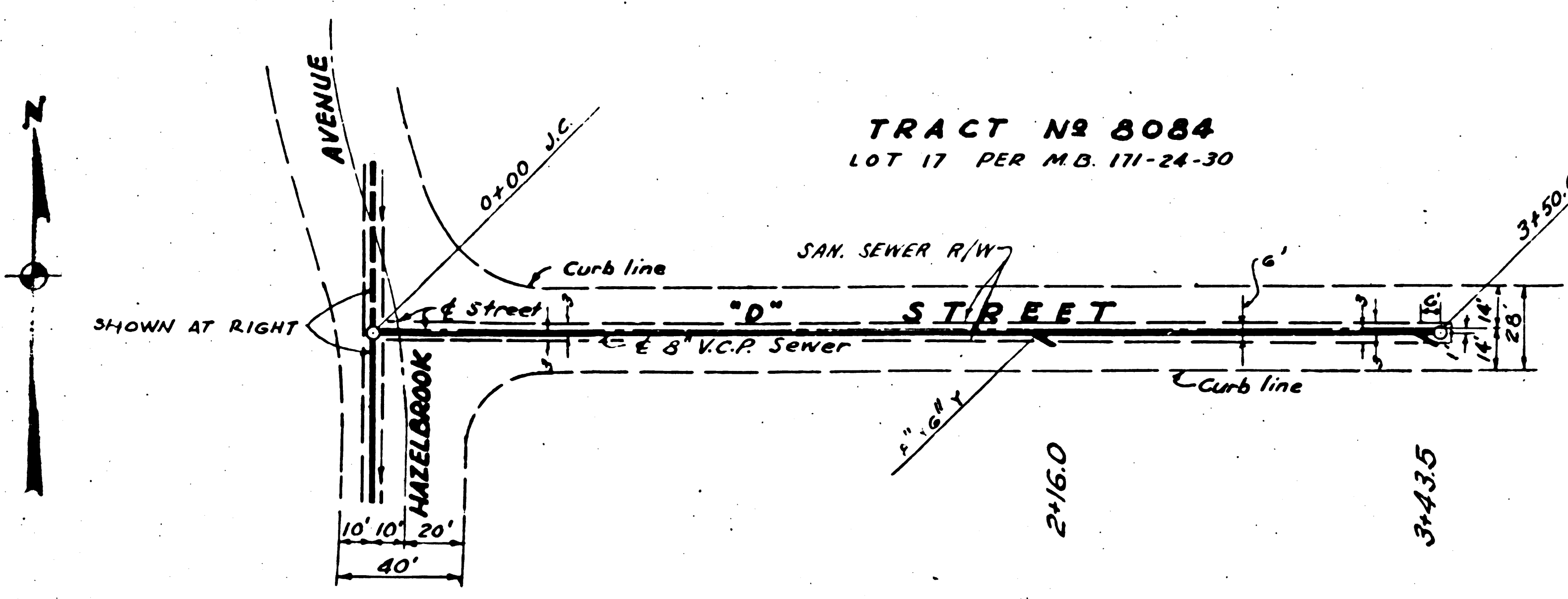
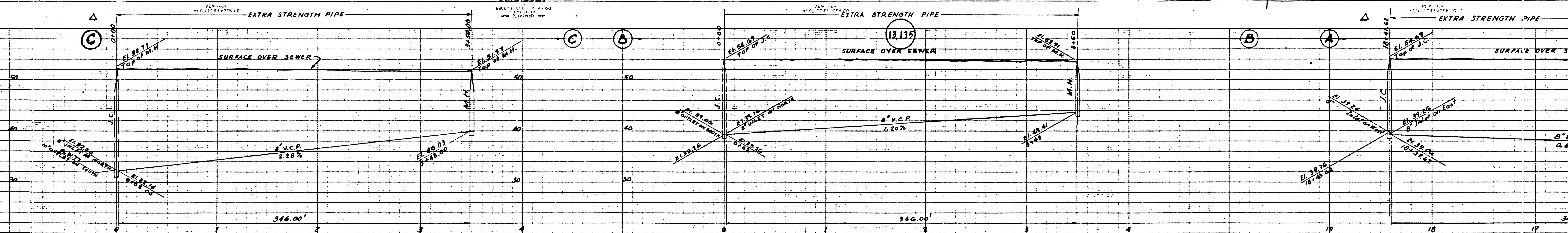


TRIM LINE ↗

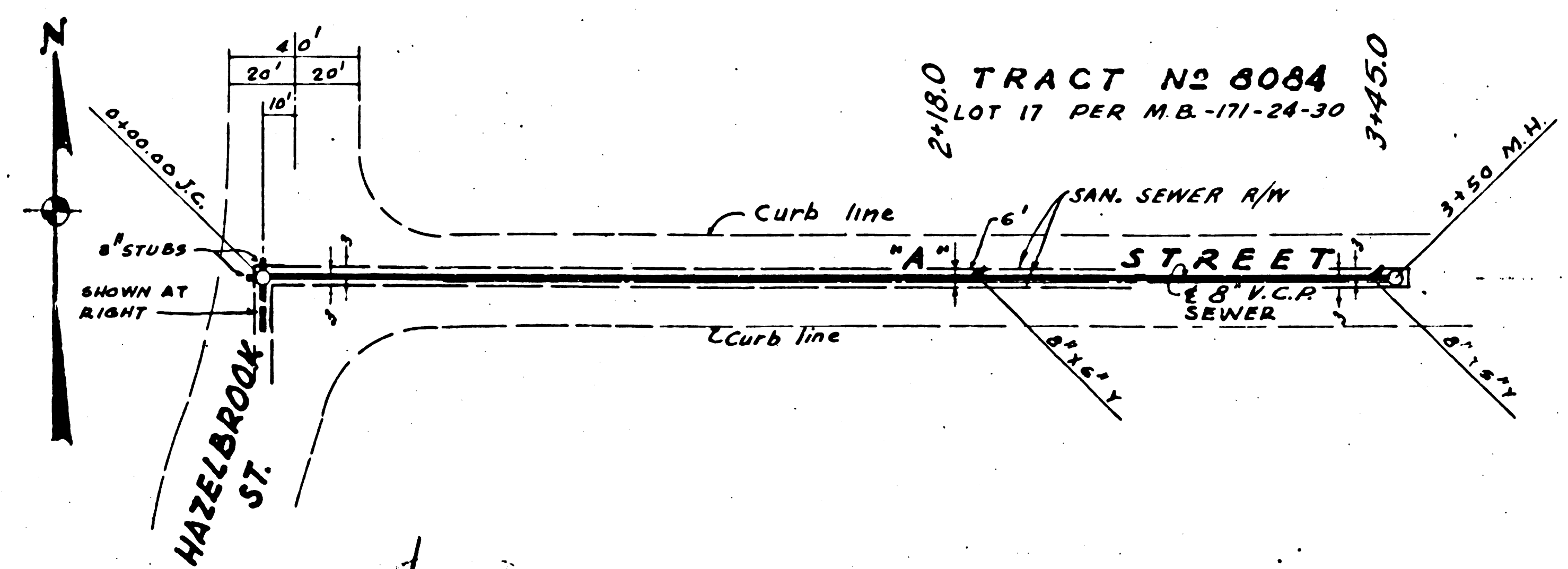
TRIM LINE ↘



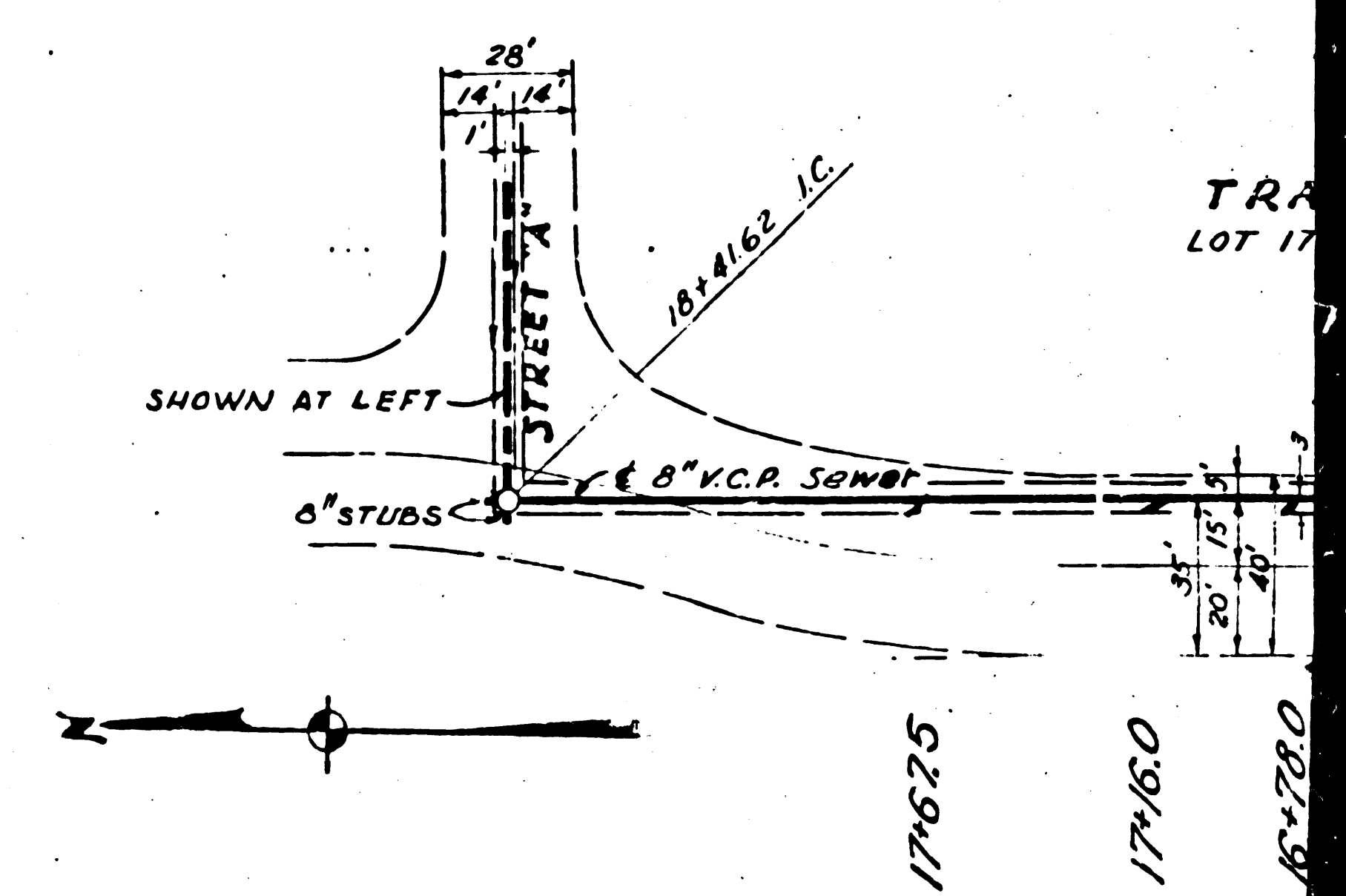
TRIM LINE



TRACT N2 8084
LOT 17 PER M.B. 171-24-30

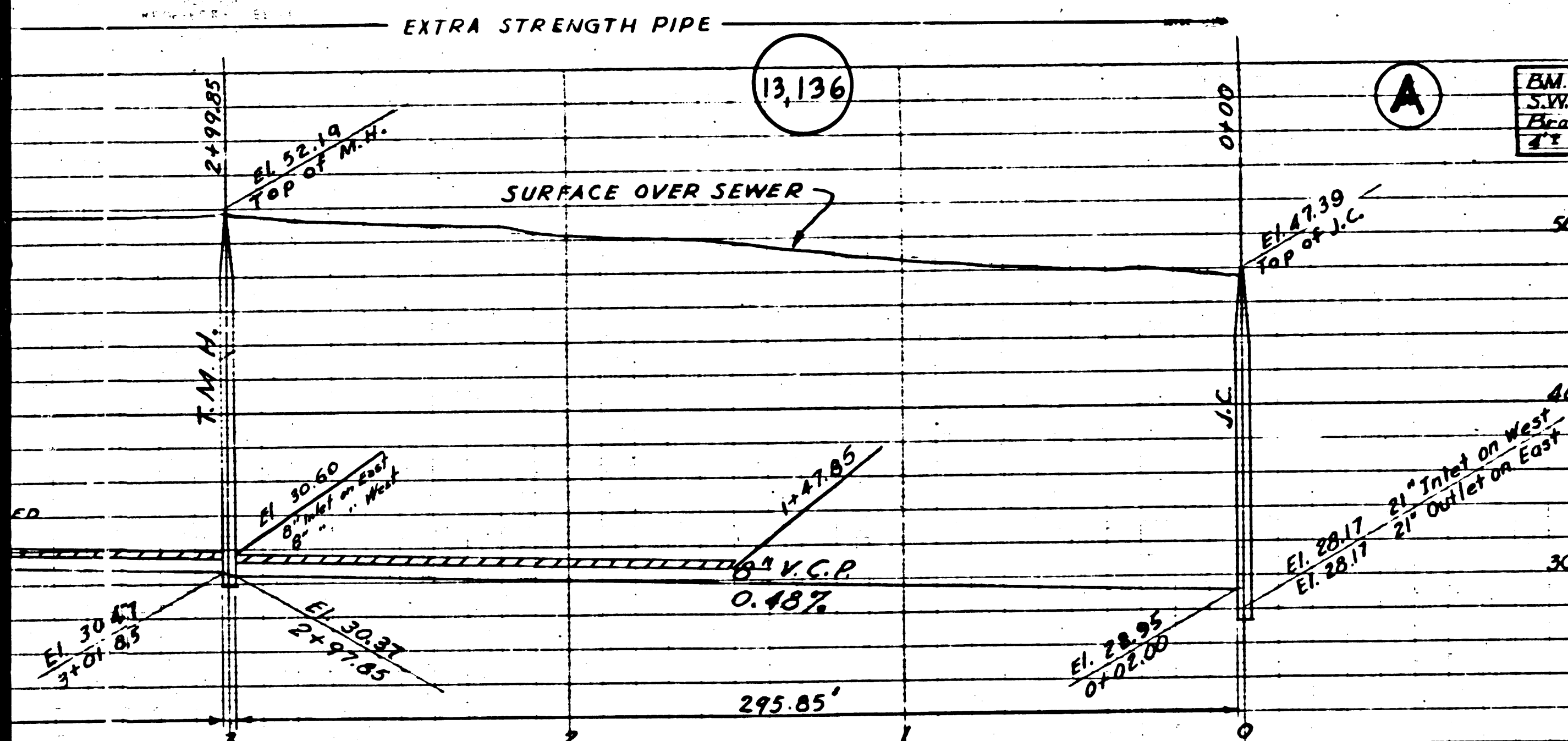


TRACT N2 8084
LOT 17 PER M.B. 171-24-30



TRACT N2 8084
LOT 17 PER M.B. 171-24-30

TRIM LINE



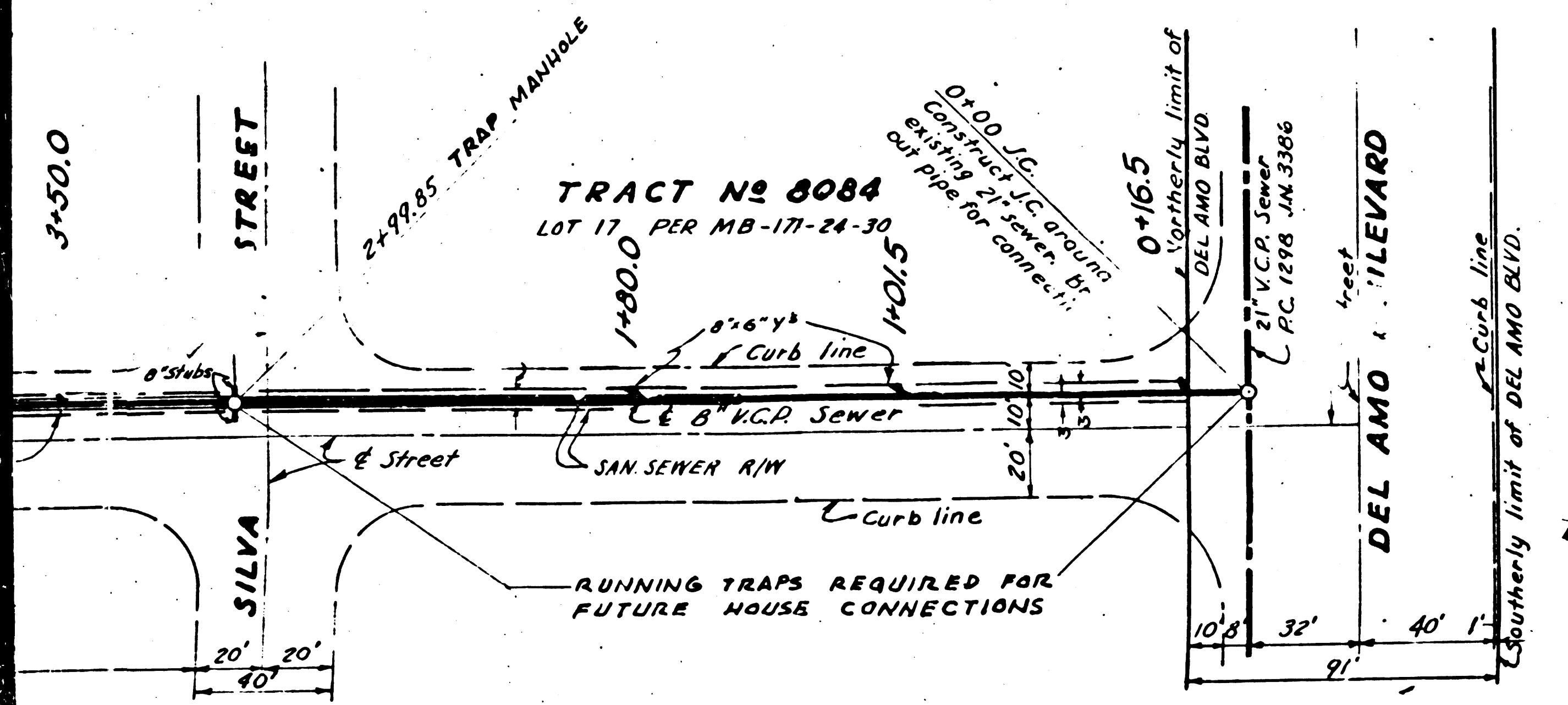
DOUBLE SCALE

DM-1 A CO. P.C. No. 120-170 EL. 479
 SW. COR. DEL AMO BLVD. & CLARK AVE.
 Break Cap in 8" Curb of Del Amo Blvd
 4' West of Curb Ret.

PROFILE, ALIGNMENT AND GRADE OF
SANITARY SEWER
 TO BE CONSTRUCTED IN
FACULTY AVENUE
 BETWEEN DEL AMO BLVD. AND 'A' STREET
 AND
'A' STREET
 BETWEEN FACULTY AVE AND GRAYWOOD AVE.
 AND
HARDWICK STREET
 BETWEEN CLARK AVE. AND A POINT 550' WLY THEREOF
 IN TRACT NO. 8084 MB-171-24-30
 LAKEWOOD CENTER
 PRIVATE CONTRACT NO. 1565
 W.S. 31
 SHEET 3 OF 3
 SCALE VERT. 1" = 4'
 HORIZ. 1" = 40'
 OCTOBER 1950
 PREPARED IN THE OFFICES OF
ALBERT C. MARTIN & ASSOCIATES

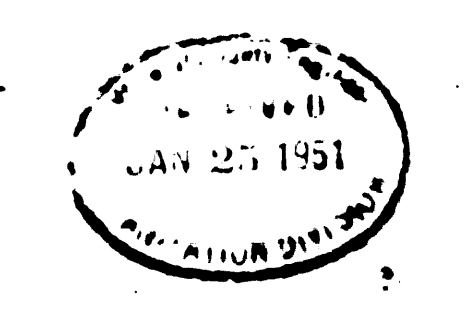
244 W. ZEMER

1220 1200
 BC 1200
 11-3-50



ALBERT C. MARTIN & ASSOCIATES	
333 So. BEAUDRY AVENUE LOS ANGELES 17, CALIF.	
REVISIONS	
	TRACED BY C.B.H.
	DES'G'D BY C.B.H.
	CK'D BY W.H.C.
	SUBMITTED N.B.P.
DATE	
11-3-50	

COUNTY OF LOS ANGELES, CALIFORNIA
 APPROVED: *[Signature]* COUNTY ENGINEER
 APPROVED BY: *[Signature]* CHIEF ENGINEER OF COUNTY
 SANITATION DIST. NO. 3
 CHECKED: *[Signature]* 1-9-51
 OFFICE OF COUNTY REG. C.E. NO. 6410



BC 1200 11-3-50
 TRACT NO 8084 LOT 11
 HARDWICK STREET
 FACULTY AVENUE
 244 W. ZEMER

