

1. Use standard Manhole, Frame and Cover, 3'-0" dia.  
 2. Use standard strength pipe (except as noted).  
 3. Use cement mortar for all vitrified clay pipe joints.  
 4. Reinforce all trench within paved area to meet Los Angeles County Road Dept. or California State Highway requirements, as applicable with this permit.  
 5. Construct house connection pipes with arrival of property line 18" feet below curb grade (except as noted).  
 6. Enclose four feet of sewer at points of interference with poles as per S-0-119.  
 7. All structures shall be brick sewer structures 3'-0" dia.  
 8. Construct tops of all structures in sight of curb above finished grade.

Note:  
 No representative of the County Engineer will survey or lay out any portion of the work. The owner or his authorized representative shall furnish the County Engineer with grade sheets and stationing of all house connections and Y branches and shall provide stakes for them at their proper locations with stationing plainly marked. Any change of location shall be requested in writing by the owner or his representative. No revision shall be made in these plans without approval of the County Engineer. Provide stakes on the property lines or property lines produced at right angles to the centerline of each street frontage. Stoppers to be installed with joint compound by manufacturer at all joints (Spec. Sec. 33.68). Concrete pavement to be set not less than 2" in depth with Concrete Saw (Spec. Sec. 65).

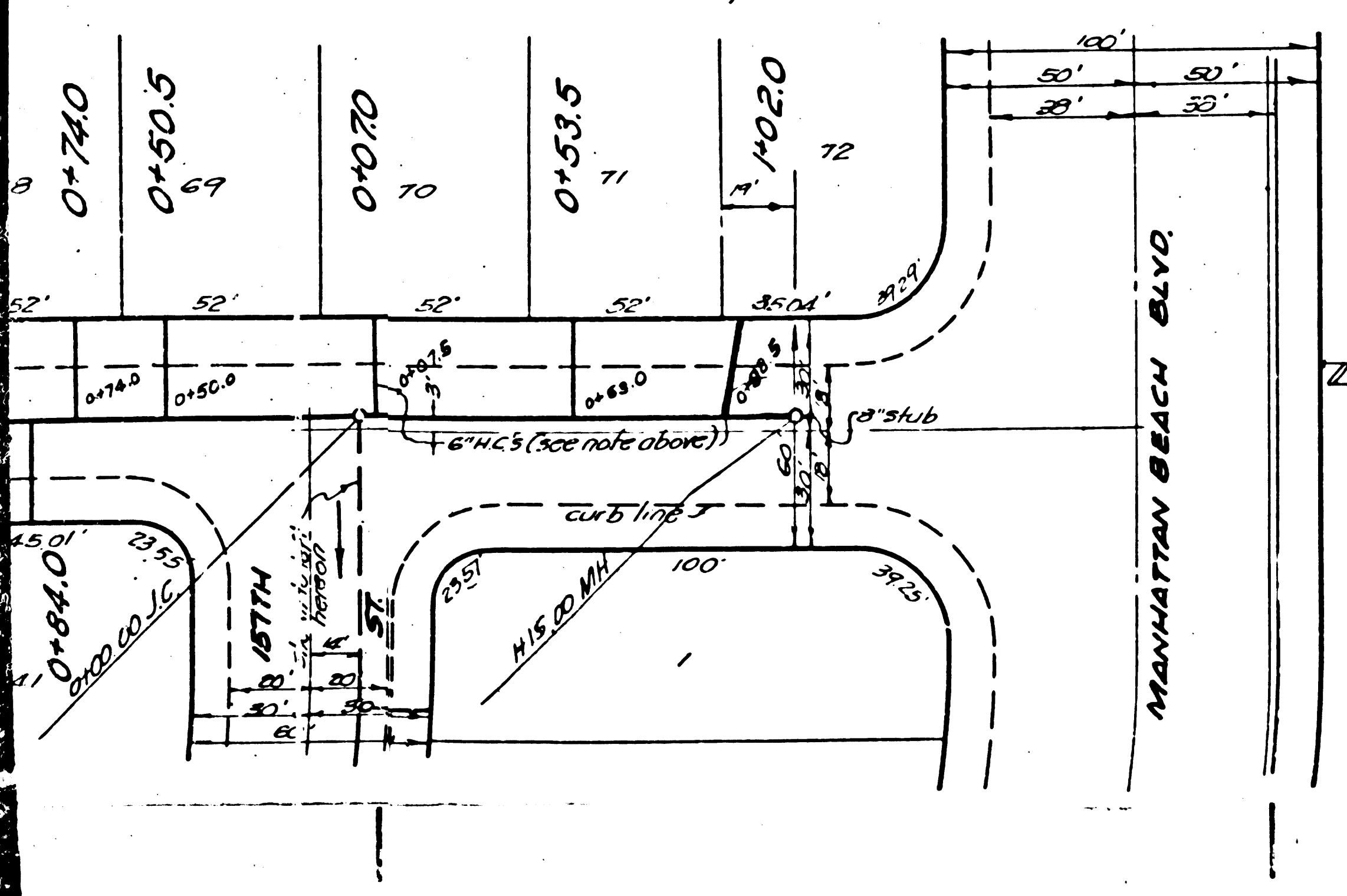
12.574

PROFILE, ALIGNMENT AND GRADE OF  
**JANITARY SEWERS**  
 TO BE CONSTRUCTED IN

①	CHADRON AVENUE	FROM MANHATTAN BEACH BLVD. TO 155TH STREET
②	155TH STREET	FROM CHADRON AVE. TO 26 FEET WEST
③	157TH STREET	FROM MANHATTAN BEACH BLVD. TO 134 FEET WEST OF FALDA AVE.
④	OSRAM AVENUE	FROM 157TH STREET TO 370 FEET NORTH
⑤	FALDA AVENUE	FROM 157TH STREET TO 436.56 FEET NORTH
⑥	RIGHT OF WAY NORTH OF 157TH ST.	FROM CHADRON AVE. TO WEST TIE-OUT LINE

IN TRACT NO. 17039  
 PRIVATE CONTRACT NO. 1369  
 W.S. 25  
 SCALE: VERT. 1" = 4'  
 HORIZ. 1" = 40'  
 DECEMBER 1950

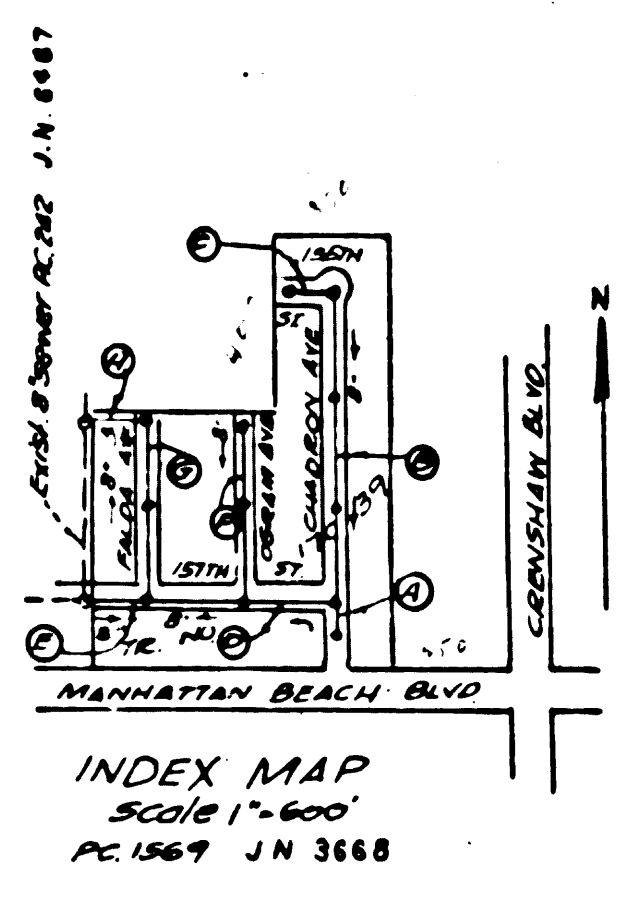
PREPARED IN THE OFFICE OF  
**GORDON J. JENNINGS CO.**  
 By *G. J. Jennings*  
 E.C.E. # 7825  
 For Legend see Plan No. S-0-64



REVISION SCHEDULE

SECTION	CHANGE
A	MOVE M.H. AND H.C.
C	MOVE M.H. AND H.C.
F	MOVE M.H. AND H.C.'S
G	MOVE H.C. TO 18"
B	ADJUST H.C. TO 18"

REVISIONS checked by *H.L. Swanson* 1-16-51  
 Office of County Engineer R.E. #2 6412



Note:  
 Grades to which this improvement is to be constructed are shown on plans and profile. Grade points for top of curb, center line of street or center line of alley are shown by circles on profiles. At all points between designated points the grade shall be established so as to conform to a straight line drawn between said designated points. Elevation are in feet above U.S.G.'s datum or mean sea level.  
 This drawing and the data hereon are hereby made a part of the specifications. Work shall be constructed according to specifications on file in the office of the County Engineer and shall be prosecuted only in the presence of the County Engineer.  
 Before work can be started the contractor must obtain a permit to excavate in County Streets from the L.A. County Road Dept., 211 So. Main Street and make a deposit with the County Engineer, 228 L.A. County Engineering Bldg., sufficient to cover the cost of construction, inspection and record plans.  
 Approval of this plan by the County of Los Angeles does not constitute a representation as to the accuracy of the location of, or the existence or non-existence of any underground utility, pipe or structure within the limits of this project.

COUNTY OF LOS ANGELES, CALIFORNIA

Approved *Gordon J. Jennings* County Engineer  
 Approved *A.M. Bawn* By *J. Bawn* Chief Engineer of County Sanitation District No. 5  
 Checked by *H.L. Swanson* 12-27-1950  
 Office of County Engineer R.E. #2 6412

6951 03  
 1000000000



