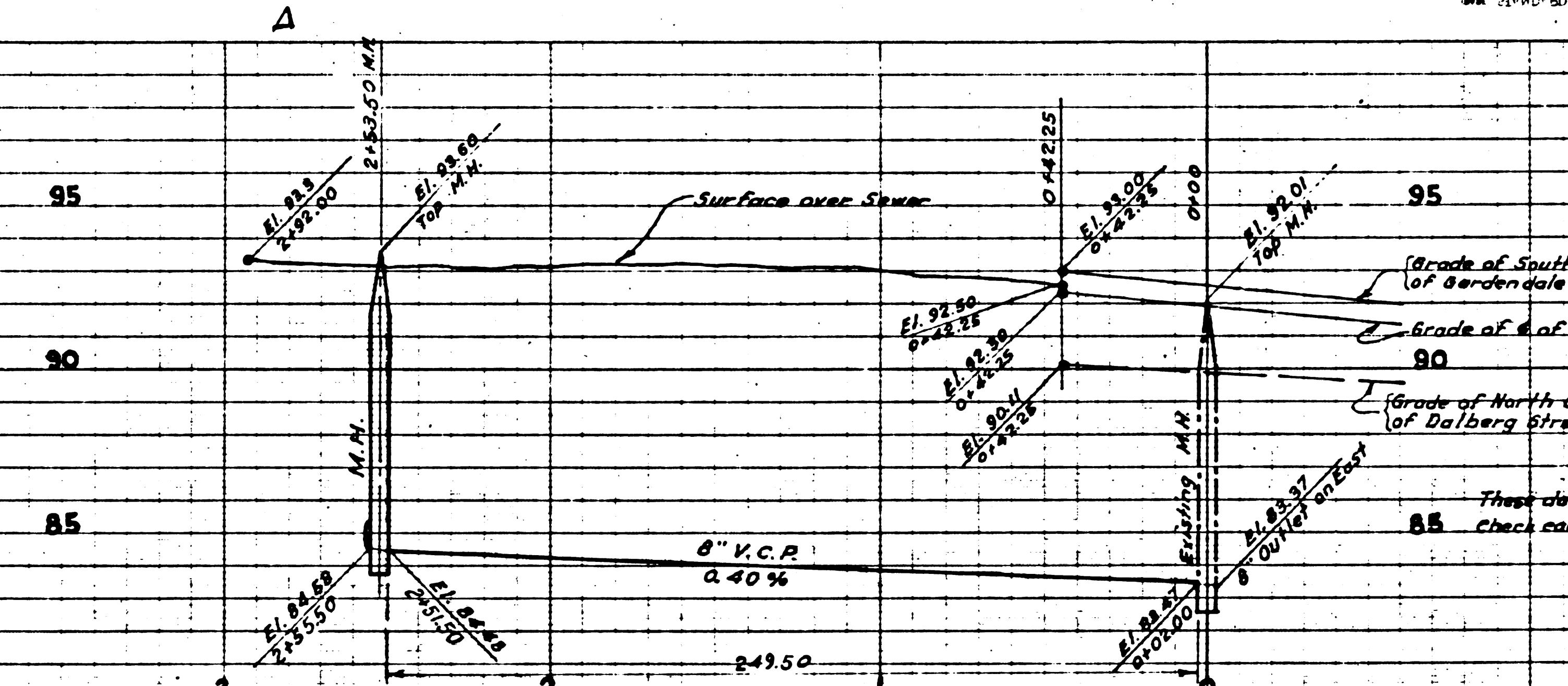


BY PLUMBER LICENSE NO. 1401
DATE 11-11-50
SHEET 2 OF 2

BY PLUMBER LICENSE NO. 1401
DATE 11-11-50
SHEET 2 OF 2



(1) USE STANDARD MANHOLE FRAME AND COVER 3'-0" (1975)
 (2) USE STANDARD STEAMPIPE PIPE
 (3) USE COBALT MASTER FOR ALL VITRIFIED CLAY JOINTS
 (4) RESURFACE ALL FRENCH WITTHIN PAVED AREA TO MEET LOS ANGELES COUNTY ROAD DEPARTMENT REQUIREMENTS IN ACCORDANCE WITH THE PERMITS
 (5) ENCASE 6" OR SEWER AT POINTS OF INTERFERENCE WITH POLES AS PER 3-0-118
 (6) ALL STRUCTURES SHALL BE BACK-SEWER STRUCTURES 3'-0" OR ABOVE FINISHED GRADE
 (7) CONSTRUCT ALL STRUCTURES IN RIGHT OF WAY WITH TOP 6" ABOVE FINISHED GRADE.

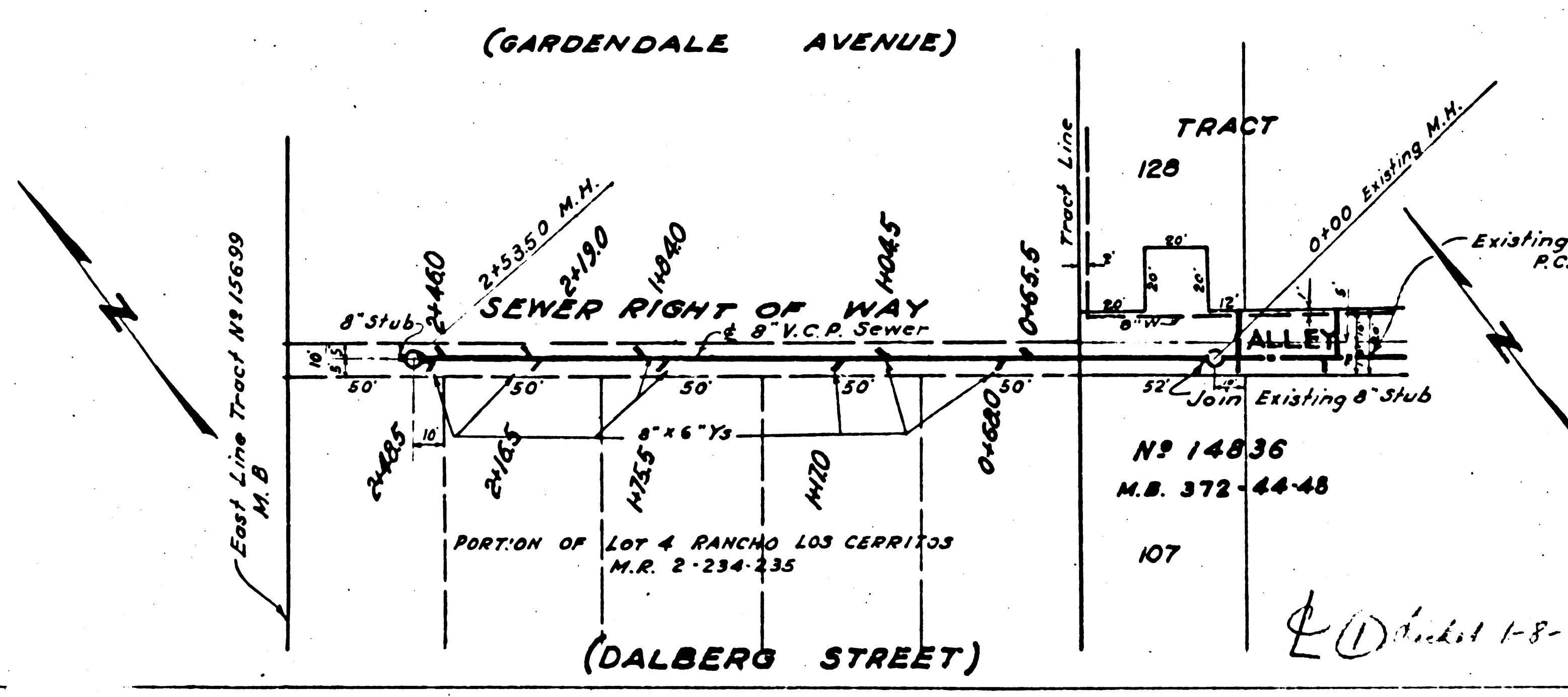
NOTE: No representative of the County Engineer will survey or lay out any portion of the work. The owner or his authorized representative shall furnish the County Engineer with grade sheets and stations of all house connections and manholes and shall provide stakes for street and house locations with stationing plainly marked. Any change of location shall be requested in writing by the owner or his representative.

NOTE: Provide stakes at the property lines or the property lines produced at right angles to the center line of the center of each manhole.

PROFILE, ALIGNMENT AND GRADE OF
SANITARY SEWER
 TO BE CONSTRUCTED IN
EASEMENT
NORTH OF DALBERG STREET
 FROM 42 FT. EAST OF WEST LINE OF TRACT NO. 14836 TO EAST WEST RIGHT OF WAY

PRIVATE CONTRACT NO. 1580
 W.S. 32 & 33
 SHEET 1 OF 1 SHEET
 PREPARED IN THE OFFICE OF
 W.M. FAIR JR.
 BY *E. J. ...*
 NOVEMBER 1950

SCALE: VERT. 1" = 4'
 HOR. 1" = 40'



NOTE: Grades to which this improvement is to be constructed are shown on the Plan and Profile.
 Grade points for the top of curb, center line of street or center line of alley are shown by circles on profiles. At all points between designated points the grade shall be established so as to conform to a straight line drawn between said designated points. Elevations are in feet above U.S.G.S. Datum or Mean Sea Level. This drawing and the data hereon are hereby made a part of the specifications.
 Work shall be constructed according to specifications on file in the office of the County Engineer and shall be prosecuted only in the presence of the County Engineer.
 Before the work can be started, the Contractor must obtain a permit to excavate in County Streets from the Los Angeles County Road Dept. 211 So. Main Street, and make a deposit with the County Engineer, 628 L.A. County Eng. Bldg. sufficient to cover the cost of construction, inspection and record plans. Approval of this plan by the County of Los Angeles does not constitute a representation as to the accuracy of the location of or the existence or non existence of any underground utility, pipe or structure within the limits of this project.

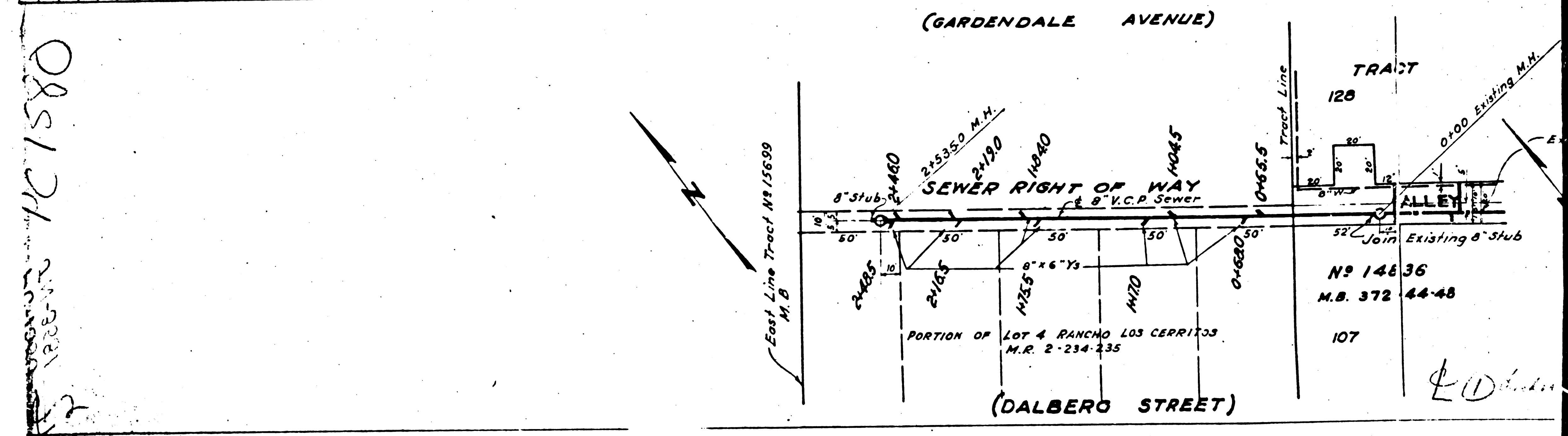
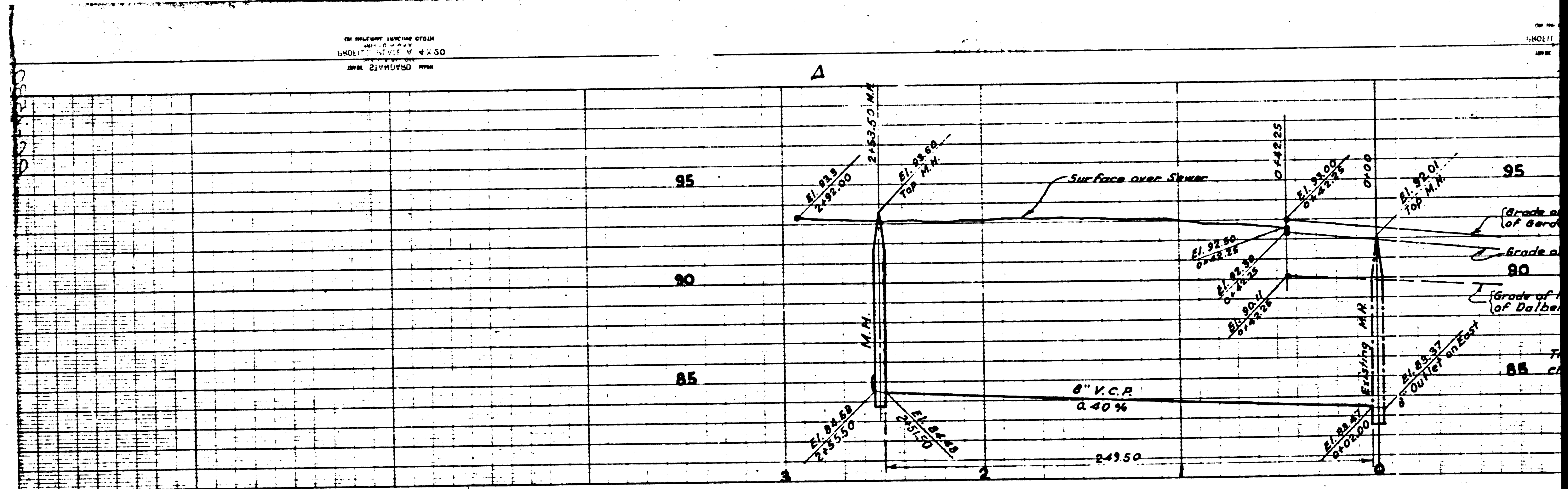
INDEX MAP
 Scale: 1" = 600'
 PC. 1580 JUN 3681

FOR LEGEND
 SEE PLAN NO. S-a-64

COUNTY OF LOS ANGELES, CALIFORNIA

APPROVED *E. J. ...*
 COUNTY ENGINEER
 A.M. RAYN
 APPROVED BY *J. B. ...* OFFICE ENGR.
 CHIEF ENGINEER OF COUNTY
 SANITATION DISTRICT NO. 2

CHECKED BY *Richard E. ...* 8-20-51
 OFFICE OF COUNTY ENGINEER REG. C.E. NO. 7850



08121
 12557
 101580