

NOTE:
1. NO REPRESENTATIVE OF THE COUNTY ENGINEER WILL SURVEY OR LAY OUT ANY PORTION OF THE WORK.
2. THE OWNER OR HIS AUTHORIZED REPRESENTATIVE SHALL FURNISH THE COUNTY ENGINEER WITH GRADE SHEETS AND STATIONS FOR ALL HOUSE CONNECTIONS AND Y BRANCHES AND SHALL PROVIDE STAKES FOR THEM AT THEIR PROPER LOCATIONS WITH STATIONING AND ELEVATIONS. ANY CHANGE OF LOCATION SHALL BE REQUESTED IN WRITING BY THE OWNER OR HIS REPRESENTATIVE.
3. ALL WORK SHALL BE MADE IN THESE PLANS WITHOUT APPROVAL OF THE COUNTY ENGINEER.
4. USE STANDARD MANDROSE FRAMES AND COVERS. 18" x 18".
5. USE STANDARD STRENGTH PIPE EXCEPT AS NOTED.
6. USE CEMENT MORTAR FOR ALL WITHEDED CLAY PIPE JOINTS.
7. RESURFACE ALL TRENCH WITHIN PAVED AREAS TO MATCH EXISTING COUNTY ROAD DEPT. REQUIREMENTS IN ACCORDANCE WITH PERMITS.
8. ENCASE FOUR FEET OF SEWER AT POINTS OF INTERFERENCE WITH POLES. 5'-11".
9. HOUSE CONNECTIONS TO BE CONSTRUCTED WITH INVERT AT PROPERTY LINE & FALL BELOW CURB GRADE.
10. ALL STRUCTURES SHALL BE BRICK SEWER STRUCTURES 36" DIA.
11. PROVIDE STAKES ON THE PROPERTY LINES OR PROPERTY LINES PROCEEDED AT RIGHT ANGLES TO THE SEWER LINE AT THE CENTER LINE OF EACH MANHOLE.
12. STOPPERS TO BE INSTALLED WITH JOINT COMPOUND BY MANUFACTURER AT THIS POINT SPECS SEC 33.06 CONCRETE PAVEMENT TO BE CUT NOT LESS THAN 2" IN DEPTH WITH CONCRETE SAW. SPECS SEC. 65

PROFILE, ALIGNMENT AND GRADE OF
SANITARY SEWERS
TO BE CONSTRUCTED IN
ANDLA AVE.
CERESITA DRIVE
BETWEEN VALLEY VIEW AND BONA VISTA LANE
ANDLA AVE.
BETWEEN VALLEY VIEW AND BONA VISTA LANE
VALLEY VIEW AVE.
BETWEEN TRACT LINE AND REIS ST
PARISE DRIVE
BETWEEN TRACT LINE AND REIS ST
BONA VISTA LANE
BETWEEN TRACT LINE AND ANOLA ST
IN TRACT N° 16297

PRIVATE CONTRACT NO. 1583
W. S. 34
SHEET 1 OF 2 SHEETS
SCALE: VERT. 1"=10'
HOR. 1"=40'
DECEMBER 1950
PREPARED IN THE OFFICES OF
ENGINEERING SERVICE CORPORATION

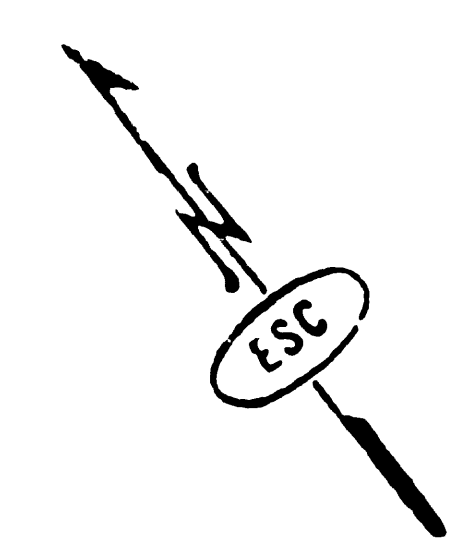
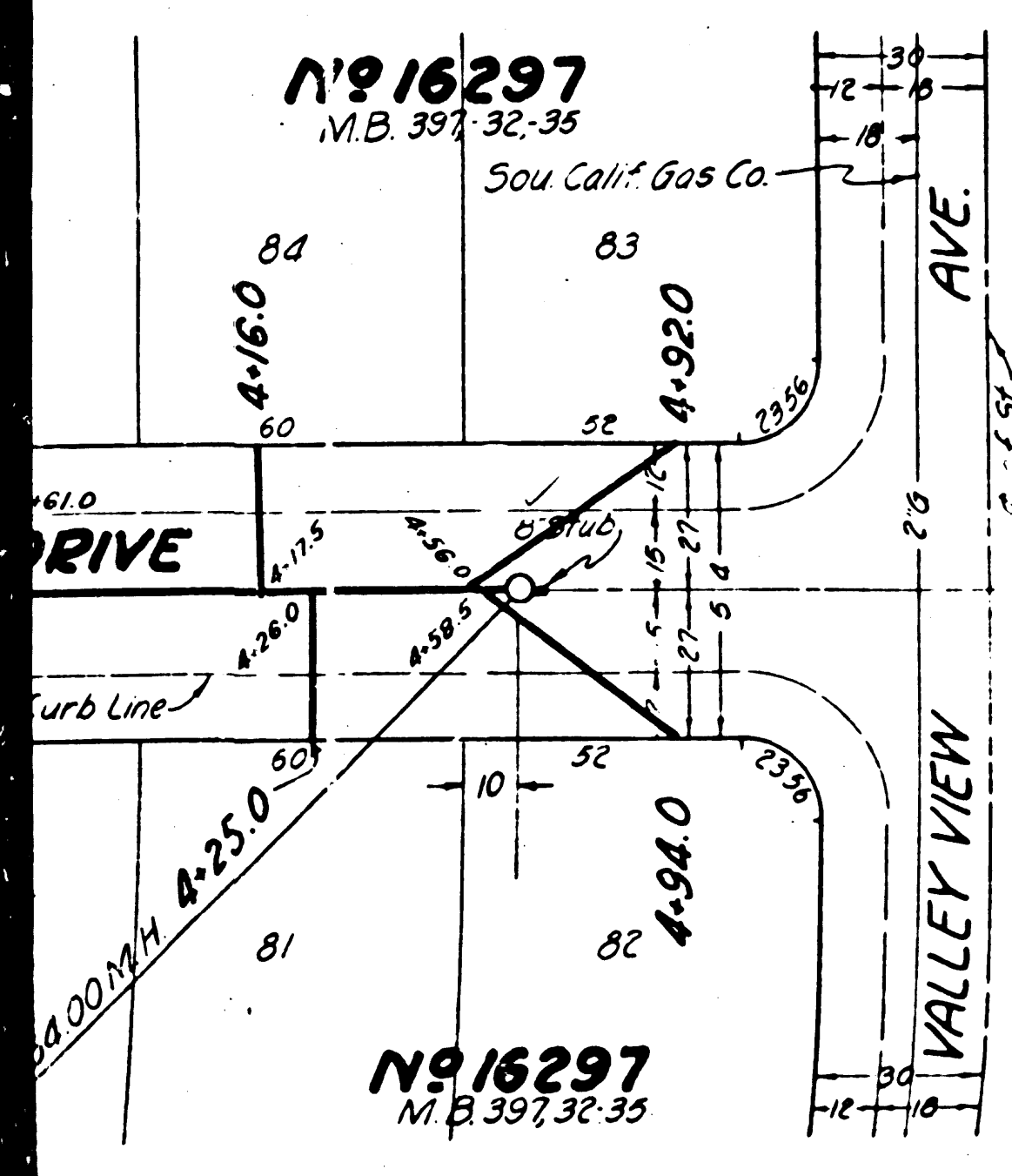
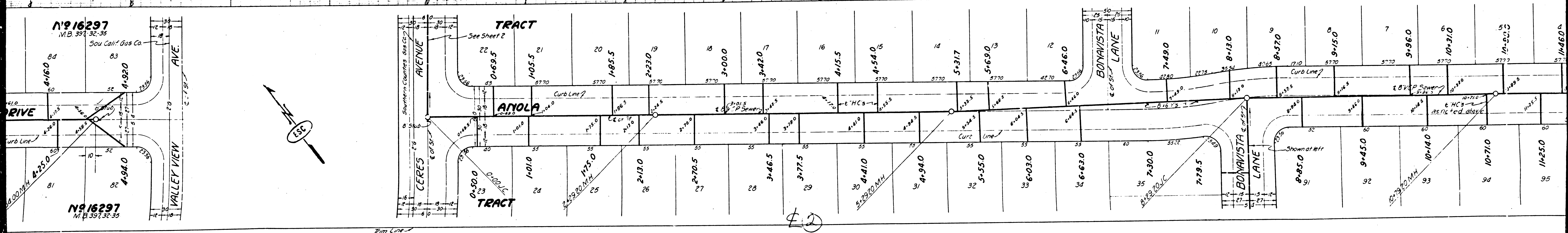
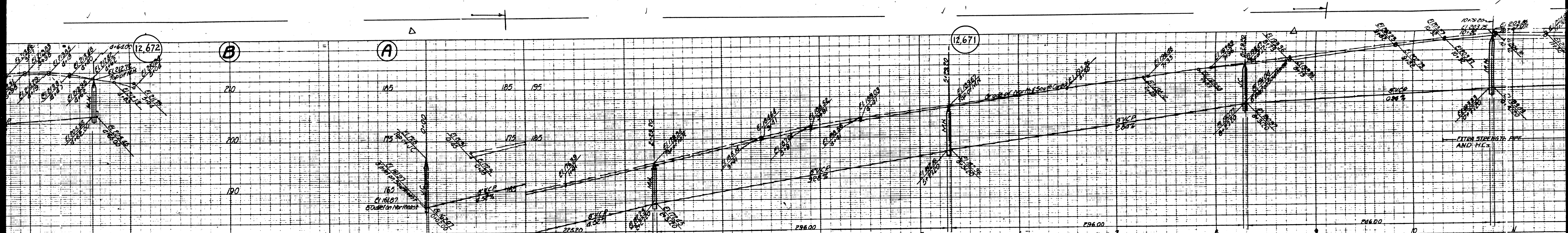
BY: *E. J. Keegan*
446 C. E. No. 1412
FOR LEGEND
SEE PLAN NO. S-4-44
JAN 25 1951
COUNTY ENGINEER

ENGINEERING SERVICE CORPORATION			
1127 W WASHINGTON BLVD.			
LOS ANGELES 15 CALIF.		PR 7241	
REVISIONS			
TRACED BY: <i>M.L.R.</i>			
DESIGNED BY: <i>M.L.R.</i>			
CHECKED BY: <i>S.L.L.</i>			
SUBMITTED BY: <i>M.J.</i>			
SUB STRUCTURES CK D			
W. O. NO.	DWG. NO.	DATE	SCALE
5920-22	1127-1	DEC. 1950	1"=10'
			1"=40'
			1"=80'

NOTE:
GRADIENT TO WHICH THIS IMPROVEMENT IS TO BE CONSTRUCTED ARE SHOWN ON PLANS AND PROFILES. GRADE POINTS FOR TOP OF CURB, CENTER LINE OF STREETS, OR CENTER LINE OF ALLEY ARE SHOWN BY CIRCLES ON PROFILES. AT ALL POINTS BETWEEN DESIGNATED POINTS THE GRADE SHALL BE ESTABLISHED SO AS TO CONFORM TO A STRAIGHT LINE DRAWN BETWEEN SAID DESIGNATED POINTS.
ELEVATIONS ARE IN FEET ABOVE U. S. G. S. DATUM OR MEAN SEA LEVEL.
THIS DRAWING AND THE DATA HEREON ARE HEREBY MADE A PART OF THE SPECIFICATIONS.
WORK SHALL BE CONSTRUCTED ACCORDING TO SPECIFICATIONS ON FILE IN THE OFFICE OF THE COUNTY ENGINEER AND SHALL BE PROSECUTED ONLY IN THE PRESENCE OF THE COUNTY ENGINEER.
BEFORE WORK CAN BE STARTED THE CONTRACTOR MUST OBTAIN A PERMIT TO EXCAVATE IN COUNTY STREETS FROM THE L. A. COUNTY ROAD DEPT. 211 50 MAIN ST. AND MAKE A DEPOSIT WITH THE COUNTY ENGINEER \$75 COUNTY ENGINEERING BUILDING SUFFICIENT TO COVER THE COST OF CONSTRUCTION INSPECTION AND RECORD PLATS.
APPROVAL OF THIS PLAN BY THE COUNTY OF LOS ANGELES DOES NOT CONSTITUTE A REPRESENTATION AS TO THE ACCURACY OF THE LOCATION OF OR THE EXISTENCE OF ANY UNDERGROUND UTILITY, PIPE, OR STRUCTURE WITHIN THE LIMITS OF THIS PROJECT. THIS NOTE APPLIES TO ALL SHEETS.
COUNTY OF LOS ANGELES, CALIFORNIA

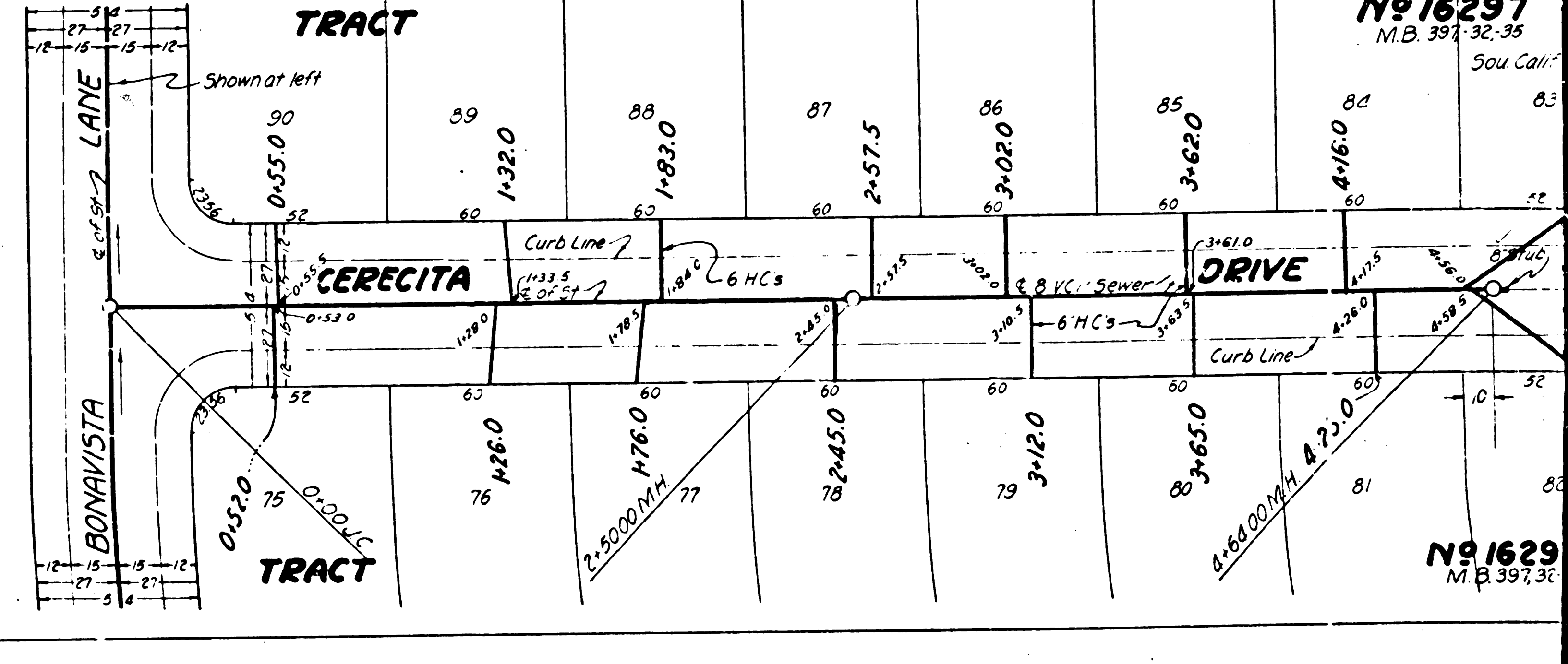
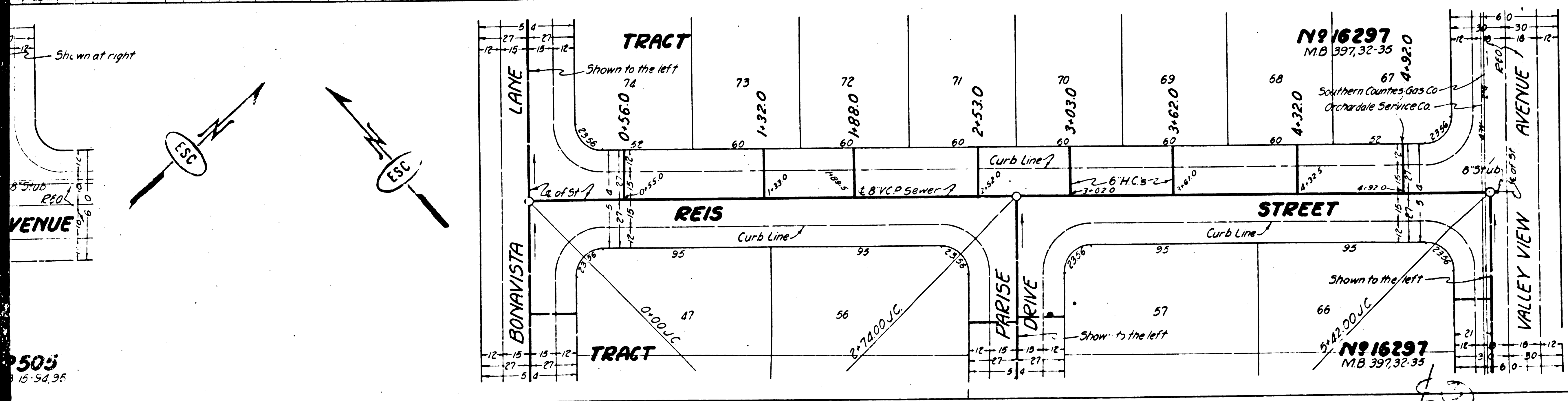
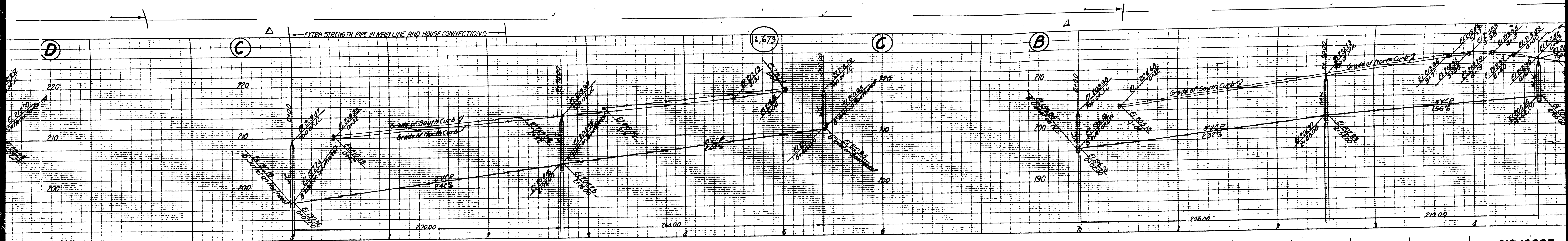
APPROVED: *Edward*
COUNTY ENGINEER
APPROVED BY: *John*
CHIEF ENGINEER OF COUNTY
SANITATION DISTRICT NO. 10
CHECKED: *John*
OFFICE OF COUNTY ENGINEER, 880 C. E. NO. 642

REVISIONS: 05 BONA VISTA LANE
 04 VALLEY VIEW AVE
 03 CERESITA DRIVE
 02
 01
 RC 1583 JN 3684
 TRACT N° 16297



Pin Line

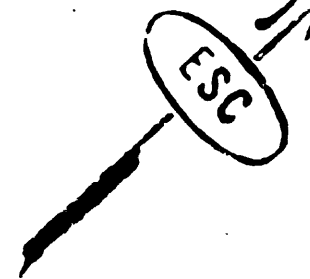
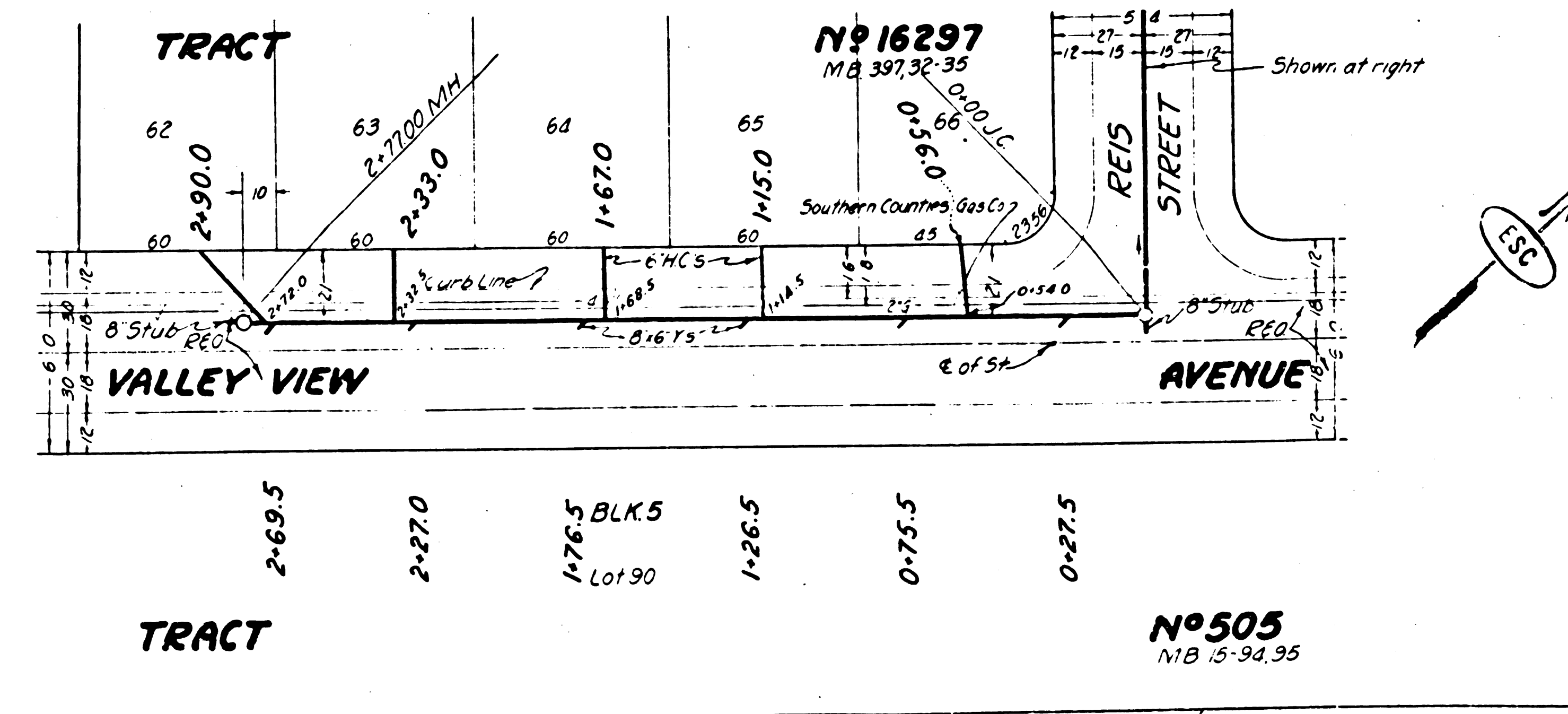
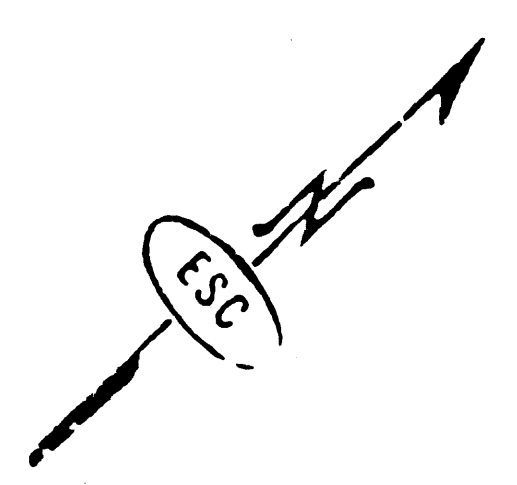
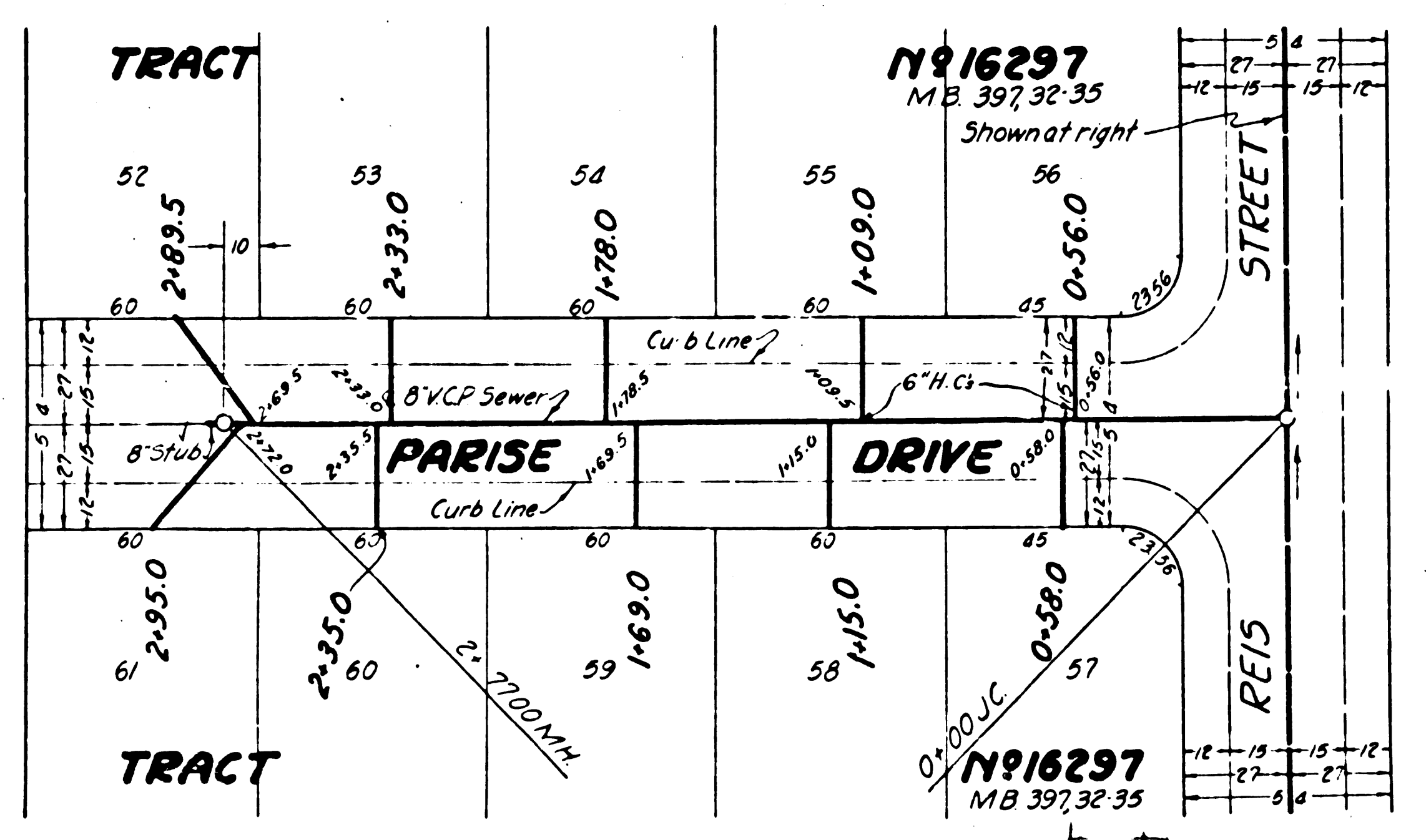
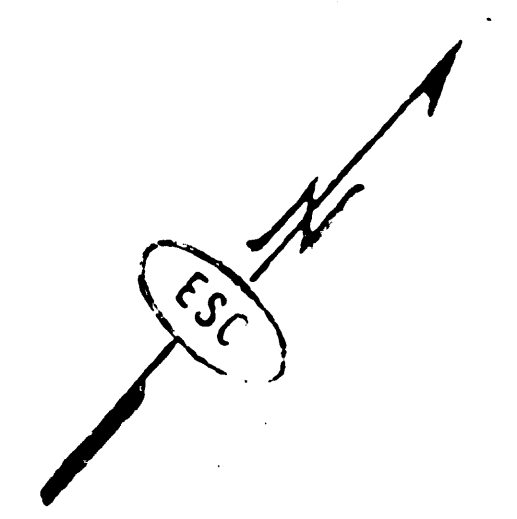
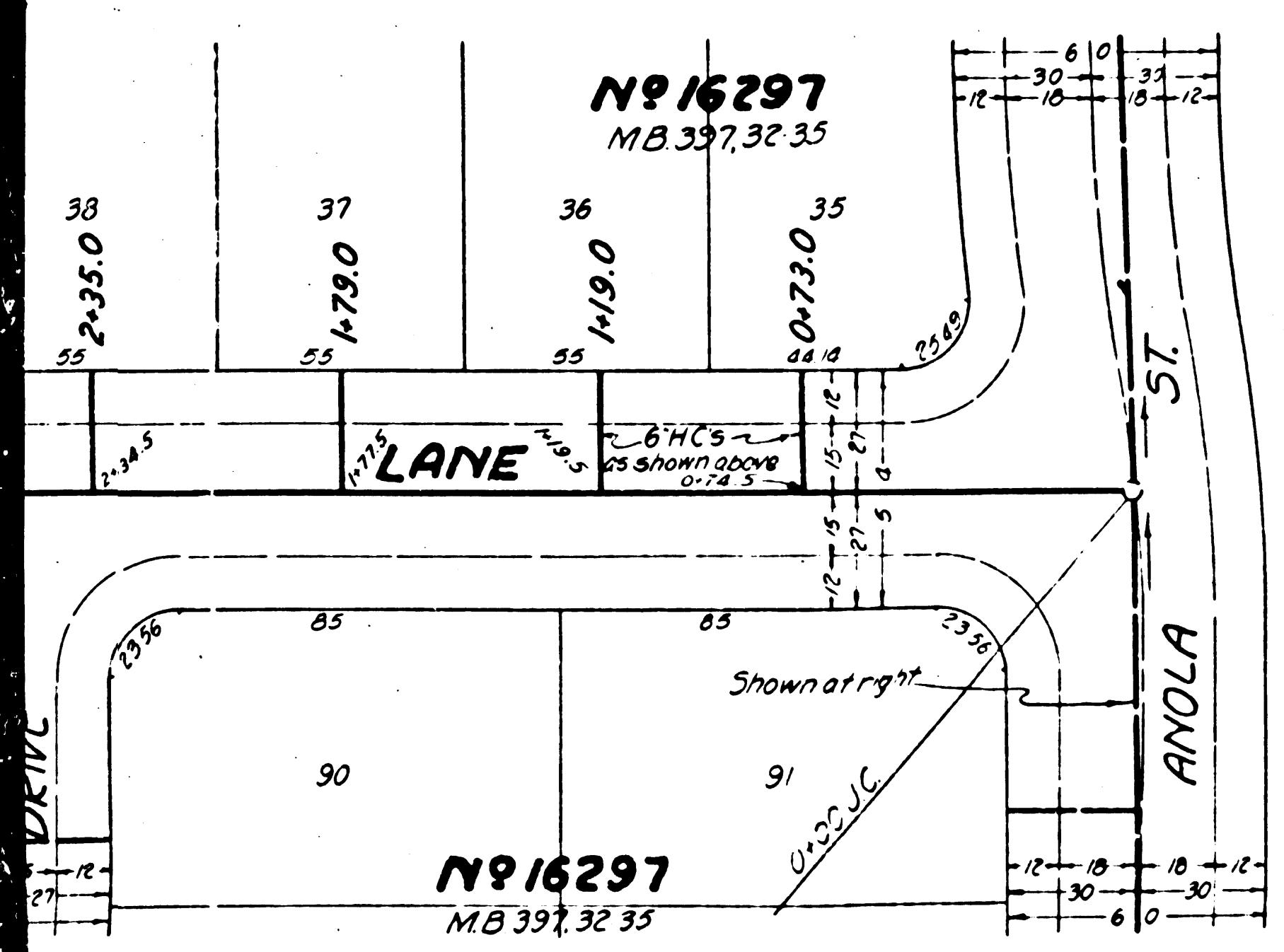
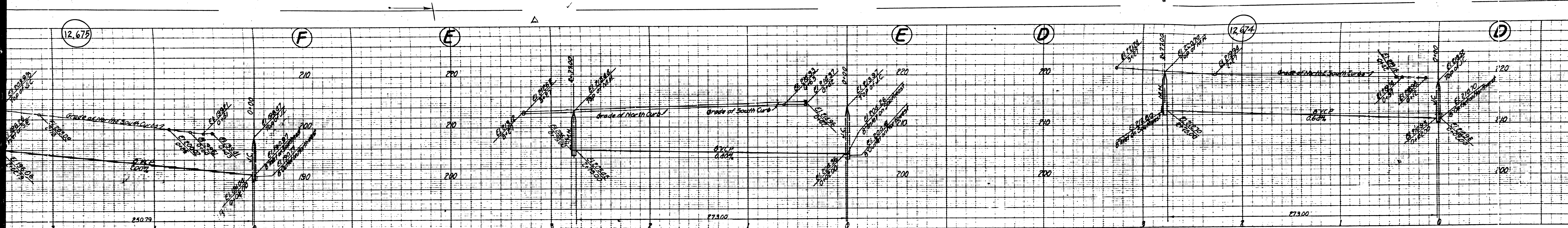
4.2



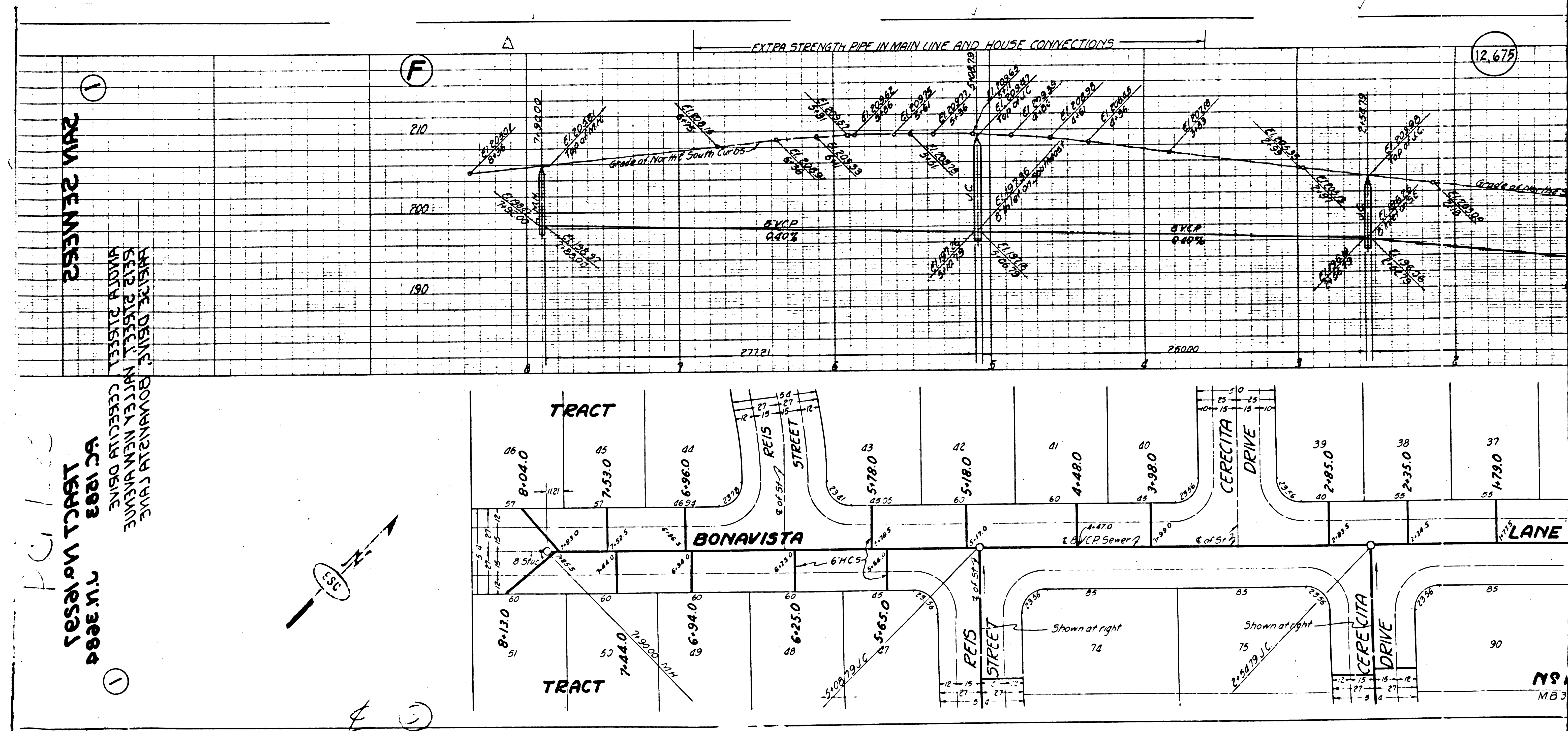
505
15-54-95

N^o 16297
M.B. 397,32-35

N^o 1629
M.B. 397,32-35

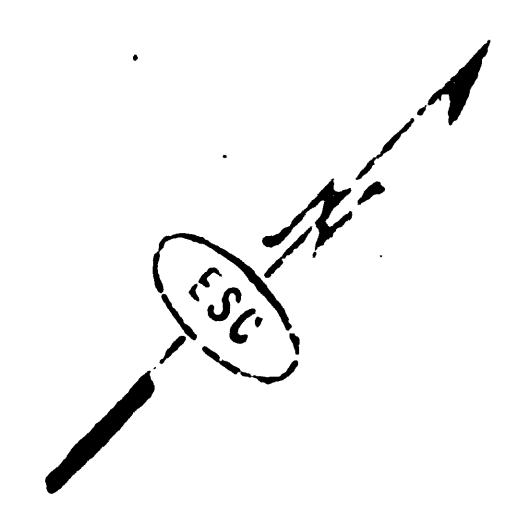


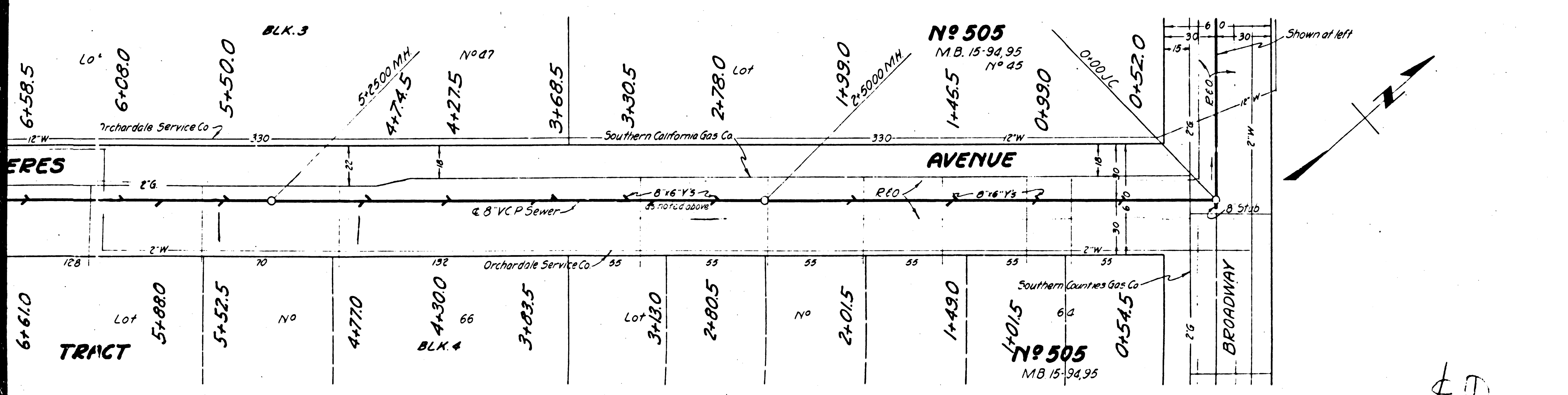
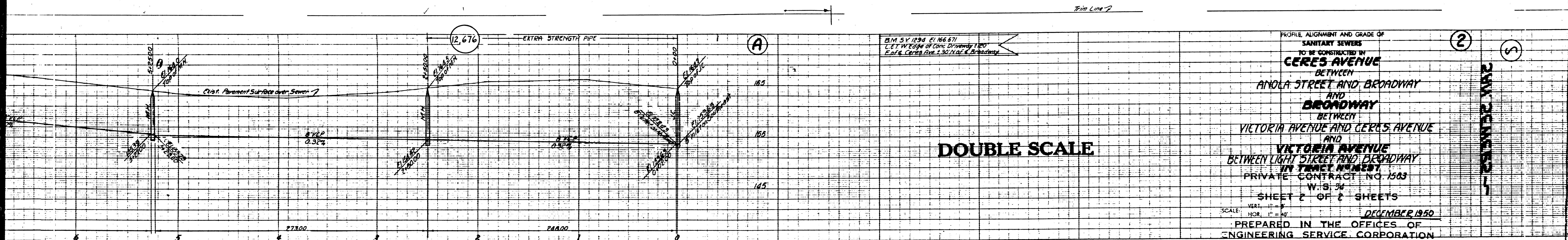
Trim Line



DATA CENTER

JAMES DENT, BONAVISTA LANE
 SAID PARCEL PARTLY NEWMARKED
 AND PARTIALLY CERECITTA DRIVE
 EC 1903
 TRACT NO. 1873
 7/11/2004





B.M. 5V 1294 E. 166.67
 L & T W. Edge of Conc. Driveway 120'
 East Ceres Ave. 2.30' N of E Broadway

PROFILE, ALIGNMENT AND GRADE OF
SANITARY SEWERS
 TO BE CONSTRUCTED BY
CERES AVENUE
 BETWEEN
ANDOLA STREET AND BROADWAY
 AND
BROADWAY
 BETWEEN
VICTORIA AVENUE AND CERES AVENUE
 AND
VICTORIA AVENUE
 BETWEEN LIGHT STREET AND BROADWAY
 IN TRACT N^o 2287
 PRIVATE CONTRACT NO. 1583
 W.S. 34
 SHEET 2 OF 2 SHEETS
 VERT. 1" = 4'
 HOR. 1" = 40'
 DECEMBER 1950
 PREPARED IN THE OFFICES OF
ENGINEERING SERVICE CORPORATION

ENGINEERING SERVICE CORPORATION
 1127 W. WASHINGTON BLVD.
 LOS ANGELES 15 CALIF. PR. 7781

REVISIONS	TRACED BY	C.M.P.
	DESIG. BY	MLK
	CHKD. BY	C.L.
	SUBMITTED	M.S.

SUB STRUCTURES L.C.C.

W.D. NO.	DATE	SCALE	L.B.	F.B.
5920-22	DEC 1950	1" = 40'		698

FOR LEGEND
 SEE PLAN NO. S-684
 FOR CONSTRUCTION NOTES SEE SHEET 1

COUNTY OF LOS ANGELES, CALIFORNIA

APPROVED: *[Signature]*
 COUNTY ENGINEER
 APPROVED BY: *[Signature]* OFFICE ENGR.
 CHECKER: *[Signature]* 1-18-51
 OFFICE OF COUNTY ENGINEER REG. C.E. NO. 2412

NO. 1583
 ORIGINAL
 CERES AVENUE
 TRACT N^o 2287

