

A.M. 57168-76 01.56.705 L.A.T.  
N. Cor'd Service Sp. 0.2 W. Cor'd  
Ref. # M.W. Cur. Hazelbrook & South St.

### DOUBLE SCALE

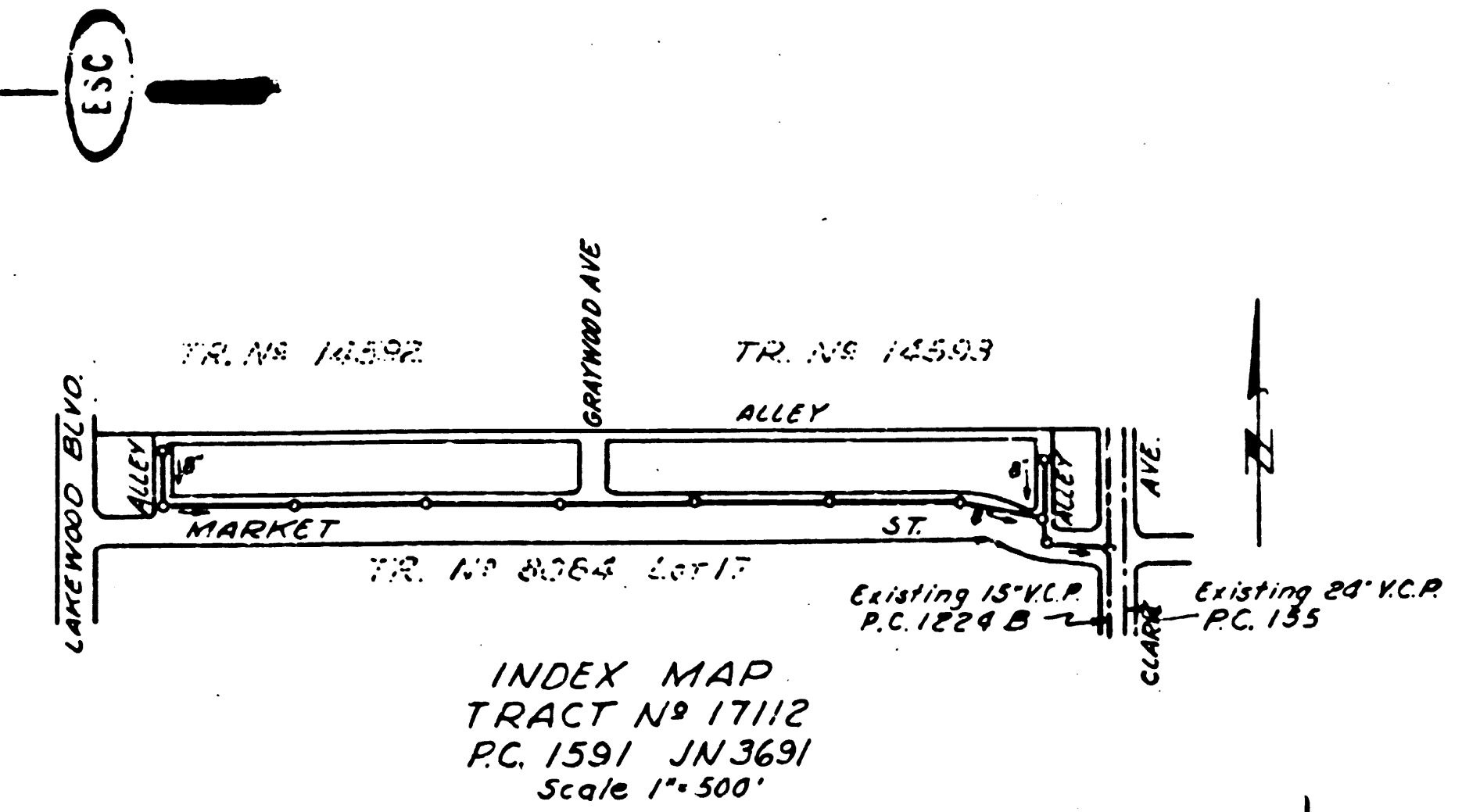
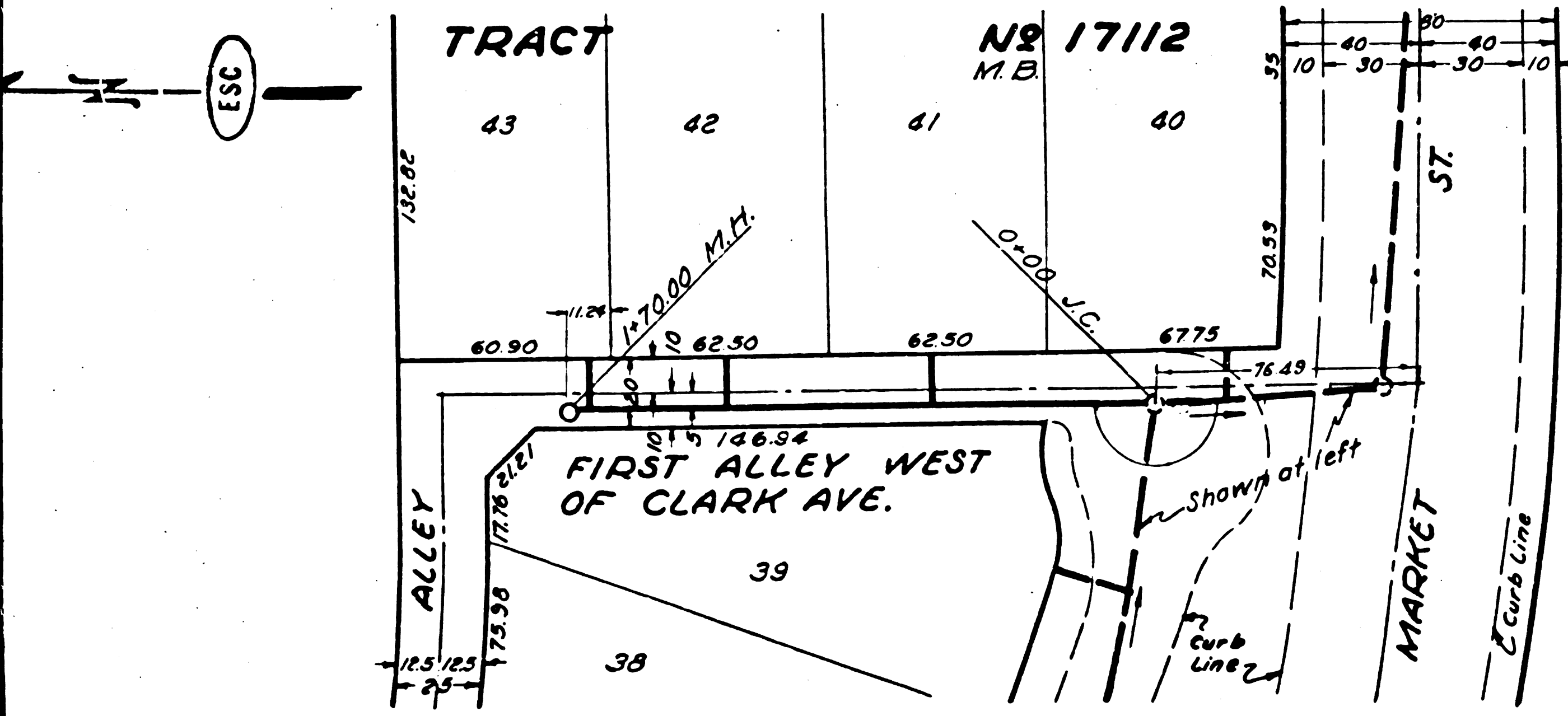
- NOTE: NO REPRESENTATIVE OF THE COUNTY ENGINEER WILL SURVEY OR LAY OUT ANY PORTION OF THE WORK. THE OWNER OR HIS AUTHORIZED REPRESENTATIVE SHALL FURNISH THE COUNTY ENGINEER WITH STAKE SHEETS AND STATIONS FOR ALL SEWER CONNECTIONS AND BRANCHES AND SHALL PROVIDE STAKES FOR THEM AT THEIR PROPER LOCATIONS WITH STATIONING PLAINLY MARKED; ANY CHANGE OF LOCATION SHALL BE REQUESTED IN WRITING BY THE OWNER OR HIS REPRESENTATIVE. NO REVISIONS SHALL BE MADE IN THESE PLANS WITHOUT APPROVAL OF THE COUNTY ENGINEER.
1. USE STANDARD MANHOLE FRAMES AND COVERS, 24" DIA.
  2. USE STANDARD STRENGTH PIPE EXCEPT AS NOTED.
  3. USE CEMENT MORTAR FOR ALL WITHIN PIPE JOINTS.
  4. RESURFACE ALL TRENCH WITHIN PAVED AREA TO MEET L.A. COUNTY ROAD DEPT. REQUIREMENTS.
  5. ENCASE FOUR FEET OF SEWER AT POINTS OF INTERFERENCE WITH POLES, ETC.
  6. HOUSE CONNECTIONS TO BE CONSTRUCTED WITH INVERT AT PROPERTY LINE - FEET BELOW CURB GRADE.
  7. ALL STRUCTURES SHALL BE BRICK SEWER STRUCTURE SECTION.
  8. PROVIDE STAKES FOR THE PROPERTY LINES OR PROPERTY LINES PRODUCED AT RIGHT ANGLES TO THE SEWER LINE AT THE CENTER LINE OF EACH MANHOLE.
  9. STOPPIES TO BE INSTALLED WITH JOINT COMPOUND BY MANUFACTURER AT MANHOLE. SPEC. SEC. 33.18.
  10. CONCRETE BANDS TO BE CUT NOT LESS THAN 2" IN DEPTH WITH CONCRETE SAW. SPEC. SEC. 65.

### FIRST ALLEY WEST OF CLARK AVE. BETWEEN NORTH TRACT LINE & MARKET ST. MARKET ST. BETWEEN CLARK AVE. & LAKEWOOD BLVD. FIRST ALLEY EAST OF LAKEWOOD BLVD. BETWEEN NORTH TRACT LINE & MARKET ST. IN TRACT NO. 17112

PRIVATE CONTRACT NO. 1591  
W. S. 31  
SHEET 1 OF 7 SHEETS  
DECEMBER 1950  
PREPARED IN THE OFFICES OF  
ENGINEERING SERVICE CORPORATION

FOR LEGEND  
SEE PLAN NO. S-44

NOTE: GRADES TO WHICH THIS IMPROVEMENT IS TO BE CONSTRUCTED ARE SHOWN ON PLANS AND PROFILES. GRADE POINTS FOR TOP OF CURB, CENTER LINE OF STREETS, OR CENTER LINE OF ALLEY ARE SHOWN BY CIRCLES ON PROFILES. AT ALL POINTS BETWEEN DESIGNATED POINTS THE GRADE SHALL BE ESTABLISHED SO AS TO CONFORM TO A STRAIGHT LINE DRAWN BETWEEN SAID DESIGNATED POINTS. ELEVATIONS ARE IN FEET ABOVE U. S. G. S. DATUM FOR PEAKS LEVEL. THIS DRAWING AND THE DATA HEREON ARE HEREBY MADE A PART OF THE SPECIFICATIONS. WORK SHALL BE CONSTRUCTED ACCORDING TO STANDARD SPECIFICATIONS FOR THE COUNTY ENGINEER AND SHALL BE PROVIDED ONLY IN THE DISTRICT OF THE COUNTY ENGINEER. BEFORE WORK CAN BE STARTED THE CONTRACTOR MUST OBTAIN A PERMIT TO OCCUPY IN COUNTY STREETS FROM THE L.A. COUNTY ROAD DEPT. 211 SO MAIN ST. AND MAKE A DEPOSIT WITH THE COUNTY ENGINEER, 878 COUNTY ENGINEERING BUILDING SUFFICIENT TO COVER THE COST OF CONSTRUCTION INSPECTION AND RECORD PLANS. APPROVAL OF THIS PLAN BY THE COUNTY OF LOS ANGELES DOES NOT CONSTITUTE A REPRESENTATION AS TO THE ACCURACY OF THE DATA HEREON ARE HEREBY MADE A PART OF THIS PROJECT AND NOT APPLICABLE TO ALL OTHER GROUND UTILITY, PIPE, OR STRUCTURE WITHIN THE LIMITS OF THIS PROJECT. THIS NOTICE APPLIES TO ALL DISTRICTS OF THE COUNTY OF LOS ANGELES, CALIFORNIA.



INDEX MAP  
TRACT NO. 17112  
P.C. 1591 JN 3631  
Scale 1"=500'

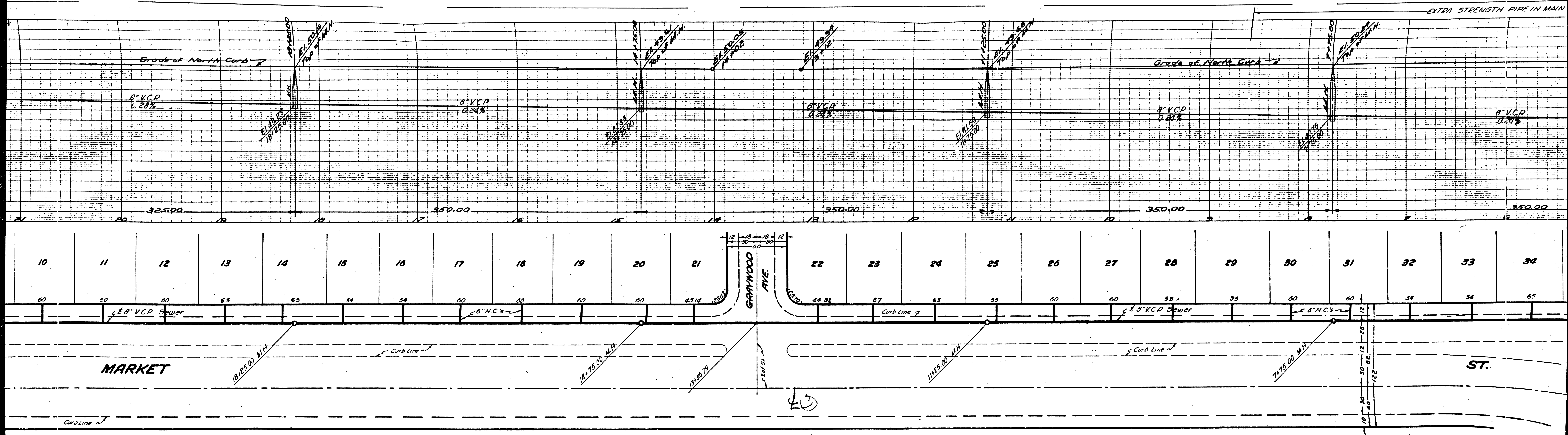
ENGINEERING SERVICE CORPORATION	
1127 A WASHINGTON BLVD	
LOS ANGELES 15 CALIF. PR. 7281	
REVISIONS	TRACED BY <i>B.P.</i>
	DESIGNED BY <i>R.H.H.</i>
	CHECKED BY <i>J.W.S.</i>
	SUBMITTED BY <i>M.B.</i>
SUB STRUCTURES CHECKED	
W. O. NO.	DATE
3971-27	September 17, 1950

APPROVED *E. W. Manning*  
CHIEF DEPUTY COUNTY ENGINEER  
APPROVED *A.M. BROWN*  
CHIEF ENGINEER OF COUNTY  
SANITATION DISTRICT NO. 3  
CHECKED *E. W. Manning*  
OFFICE OF COUNTY ENGINEER, 878 C. L. NO. 7075

HAZELBROOK & SOUTH ST. OF LAKEWOOD BLVD.  
 BETWEEN CLARK AVE. & MARKET ST.  
 TRACT 17112



EXTRA STRENGTH PIPE IN MAIN



Grade of North Curb

Grade of North Curb

8" VCP  
0.23%

8" VCP  
0.24%

8" VCP  
0.23%

8" VCP  
0.24%

8" VCP  
0.23%

325.00

350.00

350.00

350.00

350.00

10 11 12 13 14 15 16 17 18 19 20 21 22 23 24 25 26 27 28 29 30 31 32 33 34

60 60 60 65 65 54 54 60 60 60 45.14 44.32 57 65 55 60 60 58.1 35 60 60 54 54 65

MARKET

ST.

GRAYWOOD AVE.

10+25.00 M.H.

14+75.00 M.H.

19+25.00 M.H.

24+75.00 M.H.

29+25.00 M.H.

Curb Line

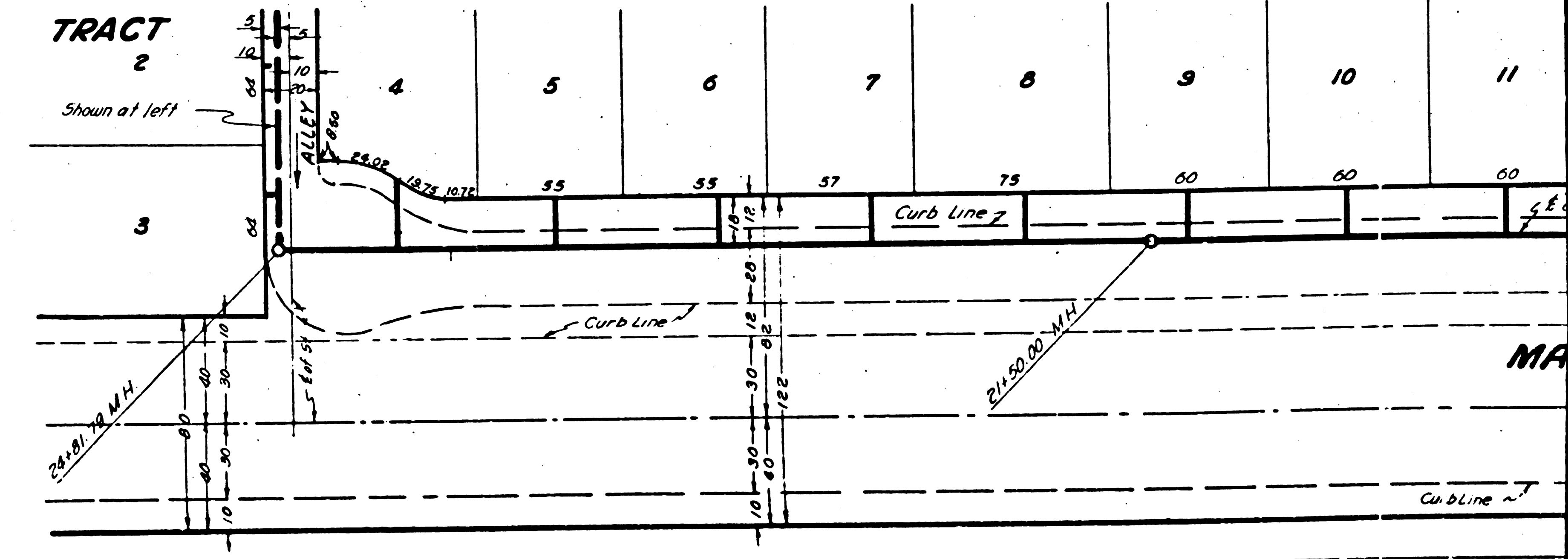
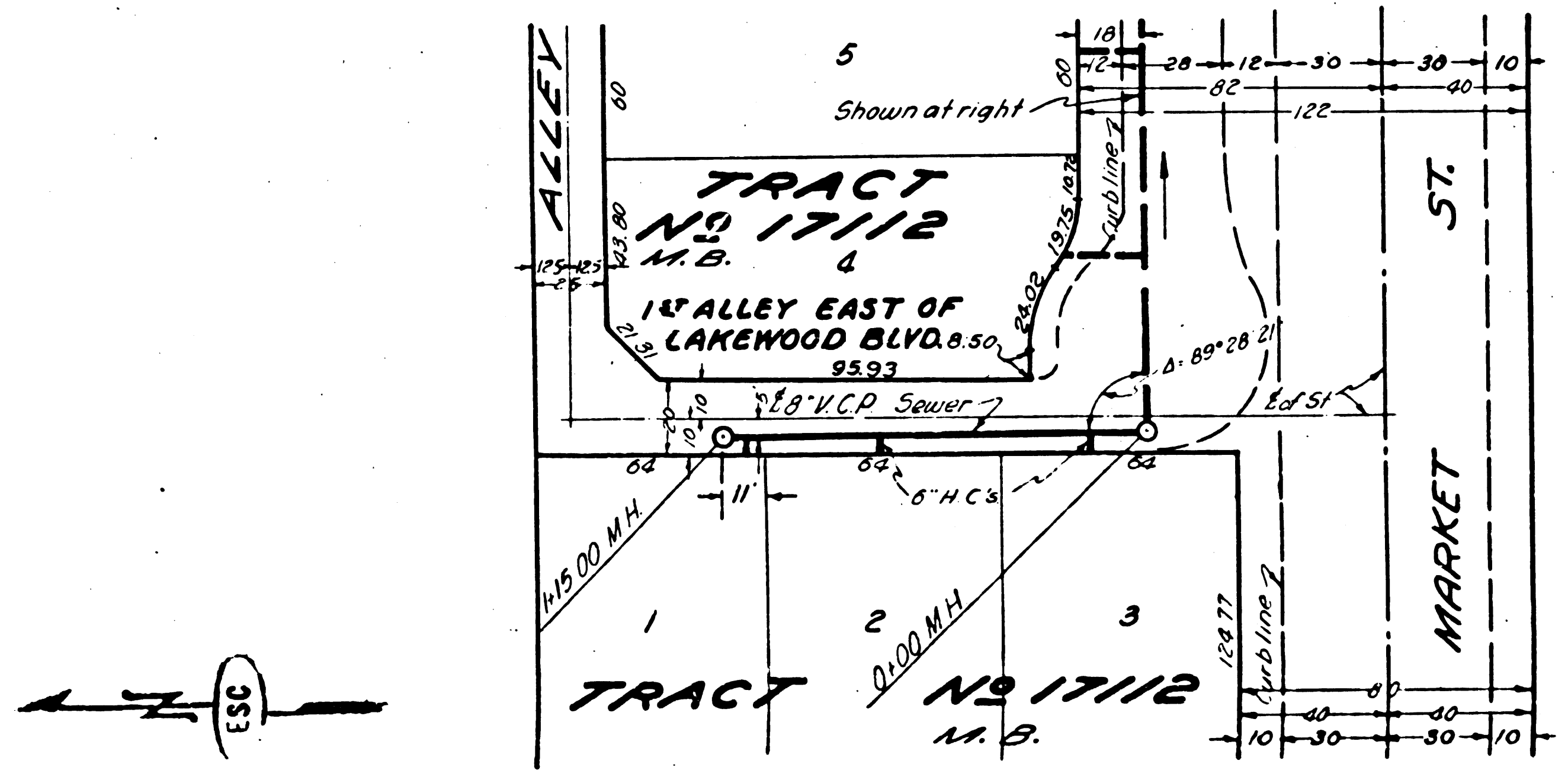
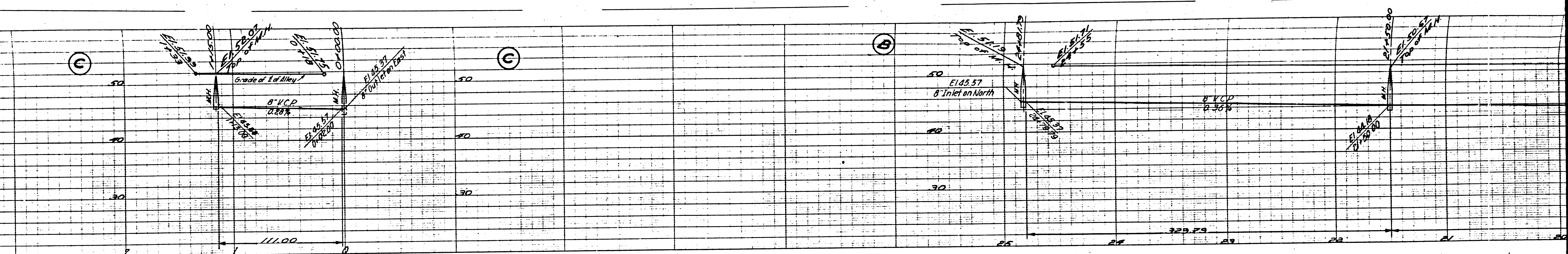
Curb Line

Curb Line

29+25.00 M.H.

0  
 1  
 2  
 3  
 4  
 5  
 6  
 7  
 8  
 9  
 10  
 11  
 12  
 13  
 14  
 15  
 16  
 17  
 18  
 19  
 20  
 21  
 22  
 23  
 24  
 25  
 26  
 27  
 28  
 29  
 30  
 31  
 32  
 33  
 34  
 35  
 36  
 37  
 38  
 39  
 40  
 41  
 42  
 43  
 44  
 45  
 46  
 47  
 48  
 49  
 50  
 51  
 52  
 53  
 54  
 55  
 56  
 57  
 58  
 59  
 60  
 61  
 62  
 63  
 64  
 65  
 66  
 67  
 68  
 69  
 70  
 71  
 72  
 73  
 74  
 75  
 76  
 77  
 78  
 79  
 80  
 81  
 82  
 83  
 84  
 85  
 86  
 87  
 88  
 89  
 90  
 91  
 92  
 93  
 94  
 95  
 96  
 97  
 98  
 99  
 100

~ RAINES MAR



10