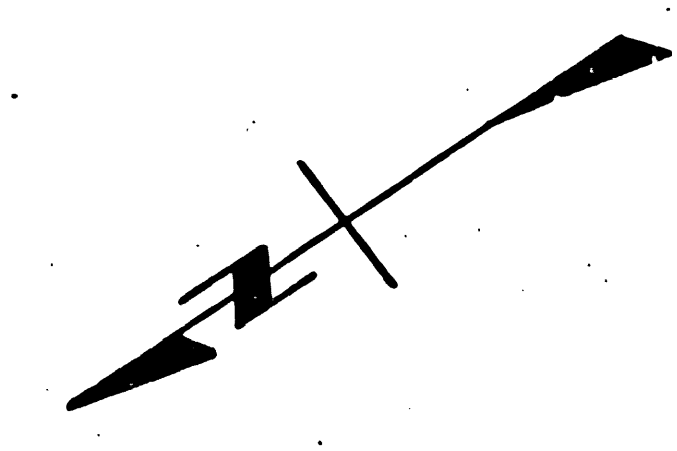
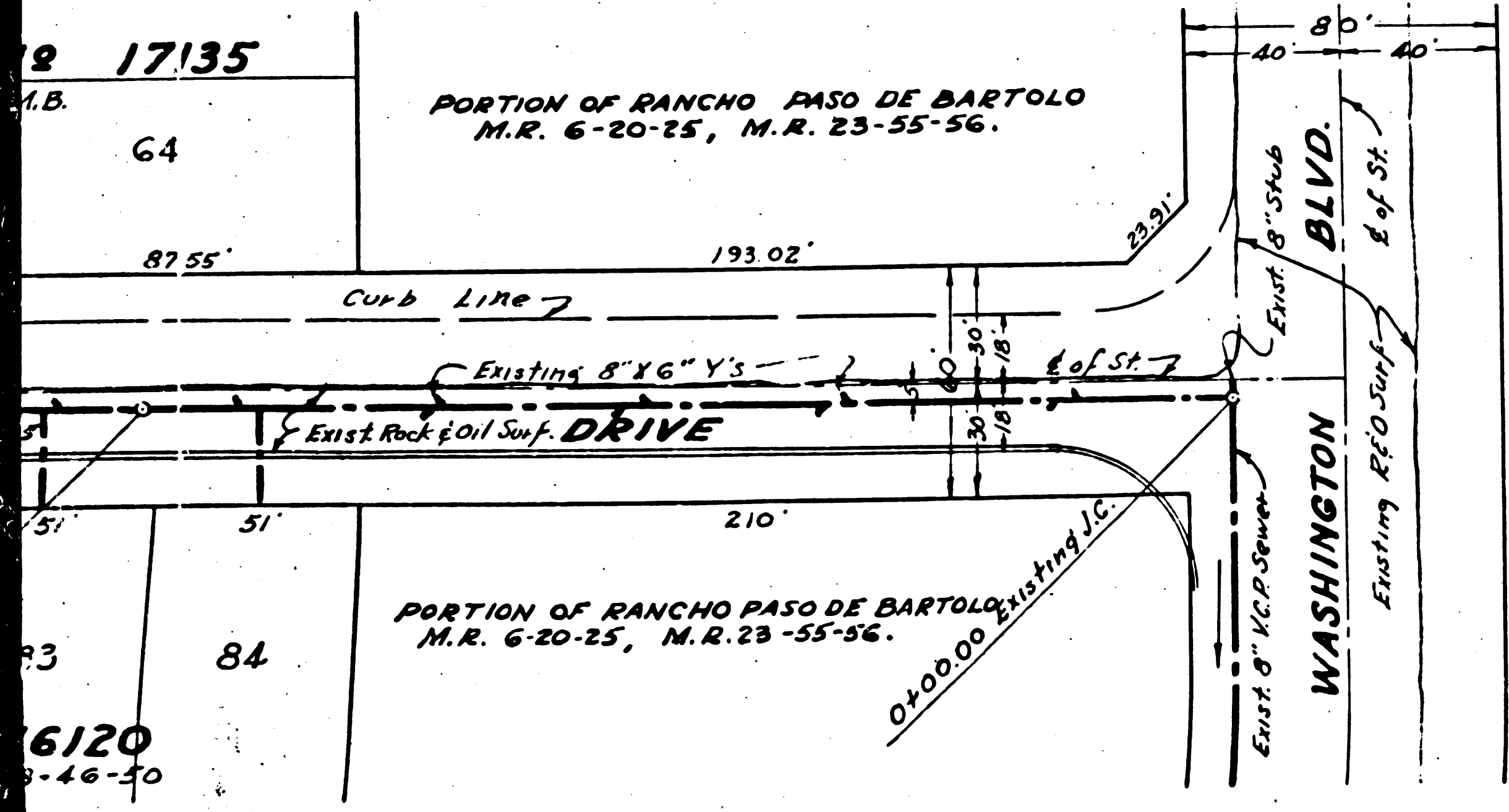
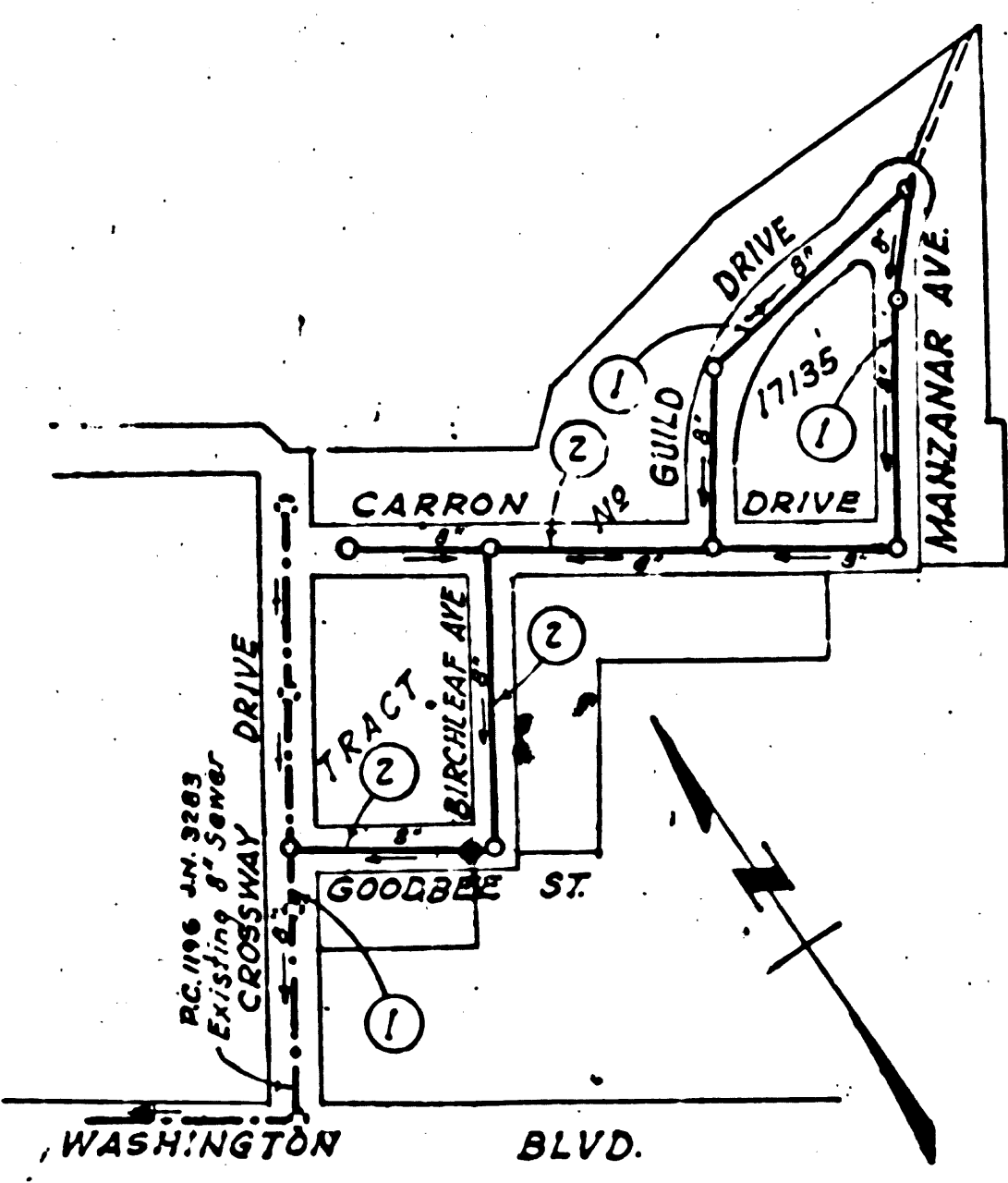


B.M. S.V.B.M. 765 - SY. 1666 - Lead & Bench Nail  
 in East Curb of Rosemead Blvd. and Washington  
 Blvd. - 40' South of B.G.R. in front of  
 Electromatic Signal Box.  
 Elev. 161.626

Note:  
 Approval of this plan by the County of Los  
 Angeles does not constitute a representation  
 as to the accuracy of the location of, or the  
 existence or non-existence of, any  
 underground utility, pipe or structure  
 within the limits of this project.  
 (This note applies to all sheets.)



12,856	USE STANDARD STRENGTH PIPE EXCEPT AS NOTED
	USE CEMENT MORTAR FOR ALL VITRIFIED CLAY PIPE JOINTS
	ENCASE FOUR FEET OF SEWER AT POINTS OF INTERFERENCE WITH POLES AS PER S. 4-113
	CONSTRUCT HOUSE CONNECTIONS WITH INVERT AT PROP. LINE 5 FEET BELOW CURB GRADE EXCEPT AS NOTED
	ALL STRUCTURES SHALL BE BRICK SEWER STRUCTURES AS PER PLAN NO. S-8-104 EXCEPT AS NOTED
	USE STANDARD MANHOLE FRAMES AND COVERS AS PER PLAN NO. S-8-117 EXCEPT AS NOTED
	CONSTRUCT TOPS OF ALL STRUCTURES IN RIGHTS OF WAY 6" ABOVE FINISHED GRADE
	RESURFACE ALL TRENCHES WITHIN PAVED AREA TO MEET LOS ANGELES COUNTY ROAD DEPT. OR STATE HIGHWAY REQUIREMENTS IN ACCORDANCE WITH PERMITS
	PROVIDE STAKES ON THE PROPERTY LINES OR PROPERTY LINES PRODUCED AT RIGHT ANGLES TO THE SEWER LINE AT THE CENTER LINE OF EACH MANHOLE
	NO REVISIONS SHALL BE MADE IN THESE PLANS WITHOUT APPROVAL OF THE COUNTY ENGINEER
	NO REPRESENTATIVE OF THE COUNTY ENGINEER WILL SURVEY OR LAY OUT ANY PORTION OF THE WORK
	THE OWNER OR HIS AUTHORIZED REPRESENTATIVE SHALL FURNISH THE COUNTY ENGINEER WITH GRADE SHEETS AND STATIONS OF ALL HOUSE CONNECTIONS AND Y BRANCHES AND SHALL PROVIDE STAKES FOR THEM AT THEIR PROPER LOCATIONS WITH STATIONING PLAINLY MARKED. ANY CHANGE OF LOCATION SHALL BE REQUESTED IN WRITING BY THE OWNER OR HIS REPRESENTATIVE



INDEX MAP  
 SCALE ~ 1" = 300'  
 P.C. 1593 J.N. 3493  
 TRACT NO 17135

PROFILE ALIGNMENT AND GRADE OF  
**SANITARY SEWERS**  
 TO BE CONSTRUCTED IN  
**TRACT NO 17135**  
 CROSSWAY DRIVE  
 BETWEEN WASHINGTON BLVD. & CARRON DRIVE  
 MANZANAR AVENUE  
 BETWEEN CARRON DRIVE & GUILD DRIVE  
 GUILD DRIVE  
 BETWEEN CARRON DRIVE & MANZANAR AVENUE  
 PRIVATE CONTRACT NO. 1593  
 W. S. 36  
 SHEET 1 OF 2 SHEETS  
 SCALE: VERT. 1" = 4' HORIZ. 1" = 40'  
 DEC. 1950  
 PREPARED IN THE OFFICES OF  
**KEMMERER ENG. CO.**  
 BY: *H.P. Hook*  
 REG. C. E. NO. 1281  
 FOR LEGEND  
 SEE PLAN NO. S-8-84  
 JAN 12 1951

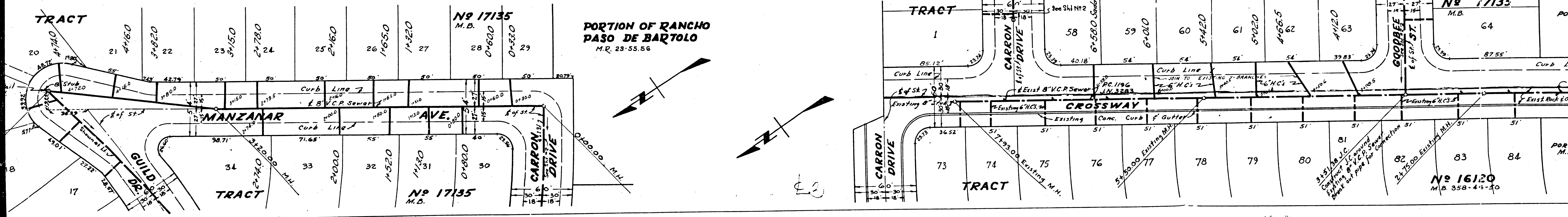
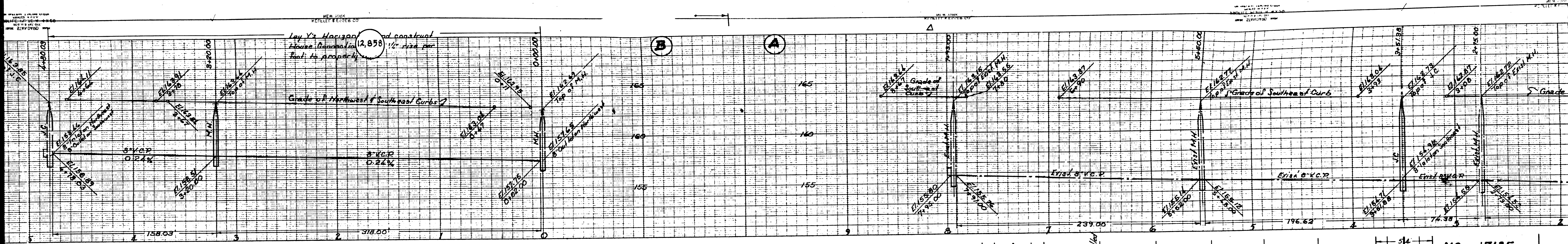
NOTE:  
 GRADES TO WHICH THIS IMPROVEMENT IS TO BE CONSTRUCTED ARE SHOWN ON PLANS AND PROFILES. GRADE POINTS FOR TOP OF CURB, CENTER LINE OF STREET OR CENTER LINE OF ALLEY ARE SHOWN BY INCLINED PROFILES AT ALL POINTS BETWEEN DESIGNATED POINTS THE GRADE SHALL BE ESTABLISHED SO AS TO CONFORM TO A STRAIGHT LINE DRAWN BETWEEN SAID DESIGNATED POINTS.  
 ELEVATIONS ARE IN FEET ABOVE U.S.C. & G.S. DATUM OR MEAN SEA LEVEL.  
 THIS DRAWING AND THE DATA HEREON ARE HEREBY MADE A PART OF THE SPECIFICATIONS. THE WORK SHALL BE CONSTRUCTED ACCORDING TO SPECIFICATIONS ON FILE IN THE OFFICE OF THE COUNTY ENGINEER AND SHALL BE PROSECUTED ONLY IN THE PRESENCE OF THE COUNTY ENGINEER, COUNTY STREET INSPECTOR AND RECORD PLANS.  
 BEFORE WORK CAN BE STARTED, THE CONTRACTOR MUST OBTAIN A PERMIT TO EXCAVATE IN THE COUNTY ENGINEER'S ROOM 830 AT 108 W. 11th STREET, SUFFICIENT TO COVER THE COST OF CONSTRUCTION INSPECTION AND RECORD PLANS.  
 IF WORK IS TO BE DONE IN A STATE HIGHWAY, A PERMIT MUST BE OBTAINED FROM THE STATE OF CALIFORNIA, DIVISION OF HIGHWAYS, 808 STATE BUILDING, AFTER MAKING THE DEPOSIT WITH THE COUNTY ENGINEER.

COUNTY OF LOS ANGELES, CALIFORNIA  
 APPROVED: *[Signature]* COUNTY ENGINEER  
 A.M. RAWLY  
 APPROVED BY: *[Signature]* OFFICE ENGINEER  
 SANITATION DISTRICT NO. 2

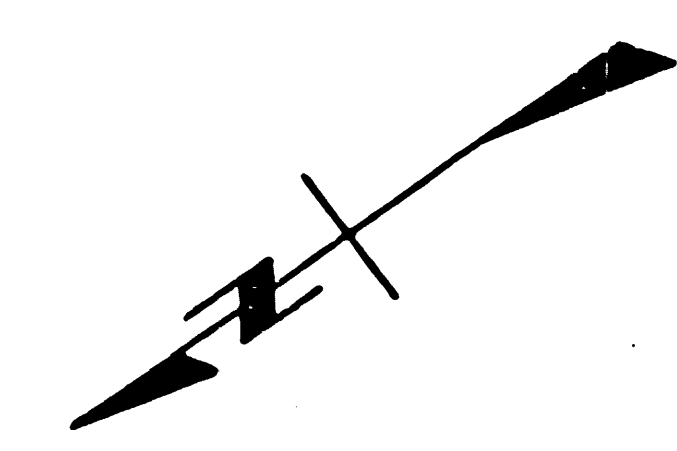
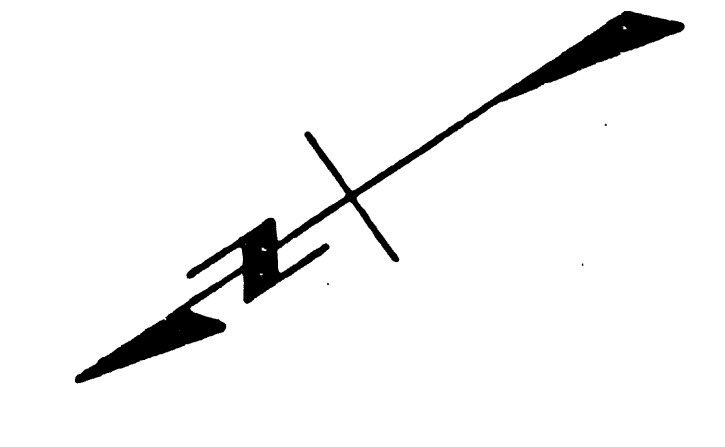
CHECKED BY: *[Signature]* 12-18-1950  
 OF REC. OF COUNTY ENGINEER REG. C. E. NO. 7675

SHEET 1 OF 2 SHEETS  
 P.C. 1593 J.N. 3493  
 TRACT NO 17135  
 MANZANAR AVENUE  
 BETWEEN CARRON DRIVE & GUILD DRIVE  
 GUILD DRIVE  
 BETWEEN CARRON DRIVE & MANZANAR AVENUE  
 PRIVATE CONTRACT NO. 1593  
 W. S. 36  
 SHEET 1 OF 2 SHEETS  
 SCALE: VERT. 1" = 4' HORIZ. 1" = 40'  
 DEC. 1950  
 PREPARED IN THE OFFICES OF  
 KEMMERER ENG. CO.  
 BY: H.P. Hook  
 REG. C. E. NO. 1281  
 FOR LEGEND  
 SEE PLAN NO. S-8-84  
 JAN 12 1951

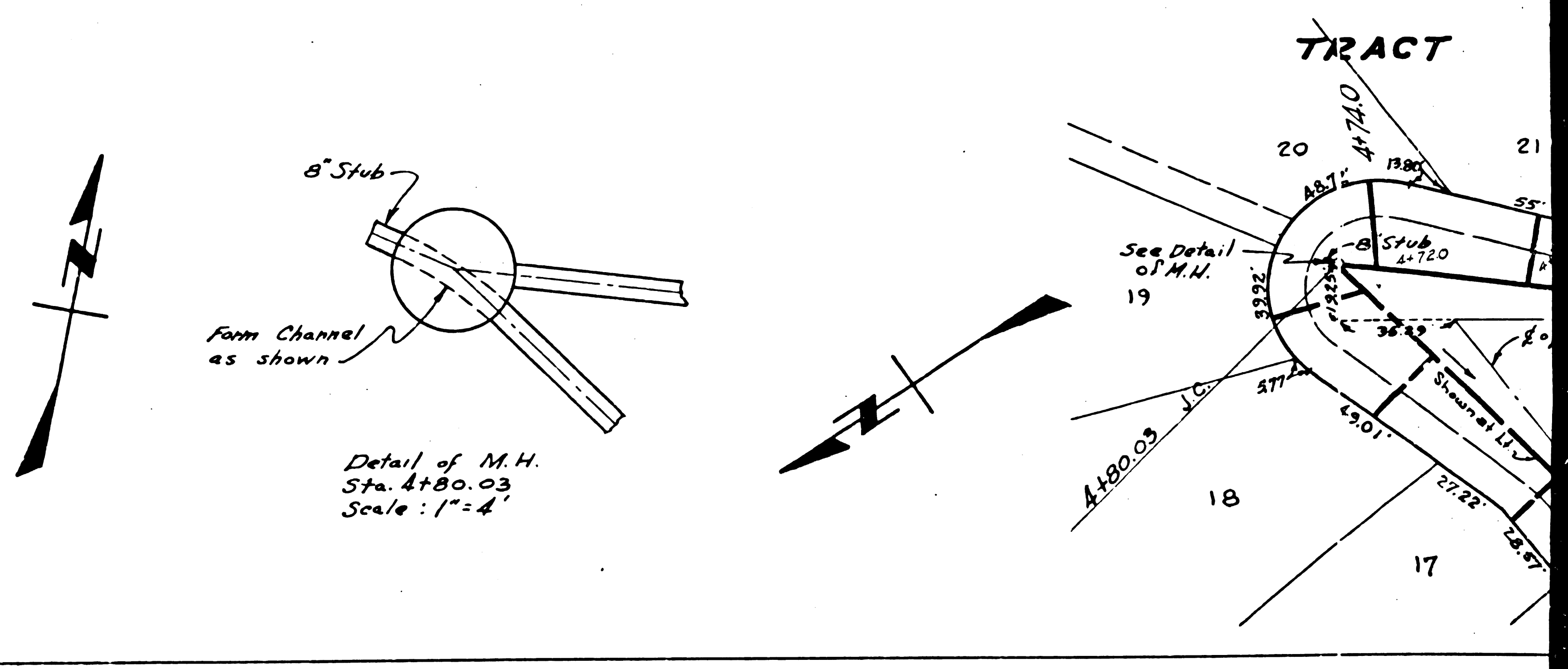
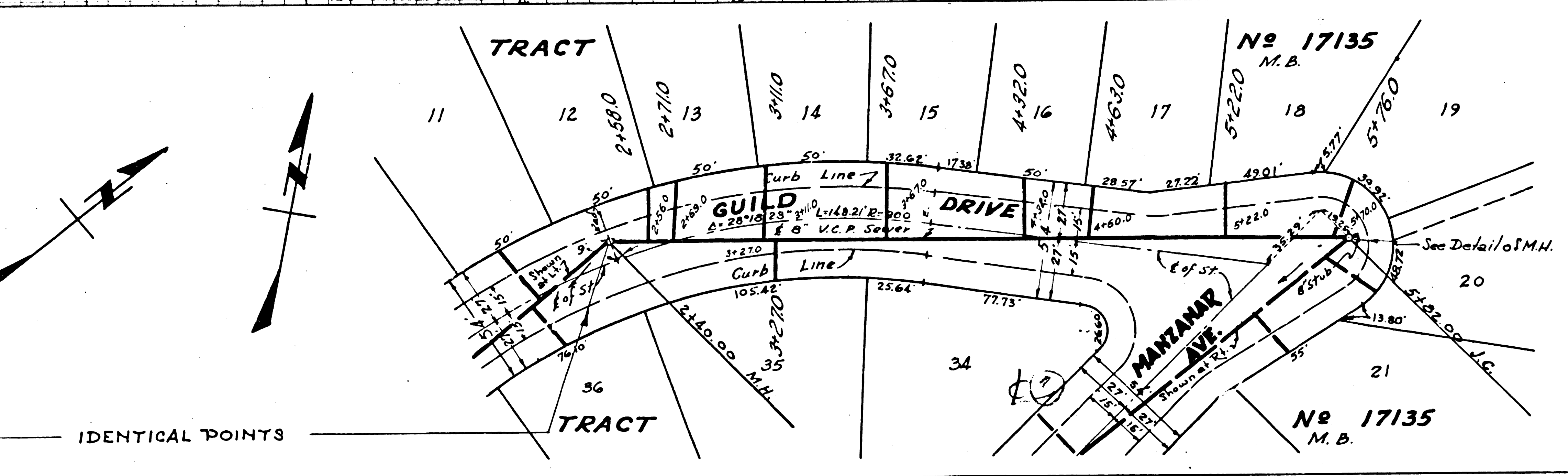
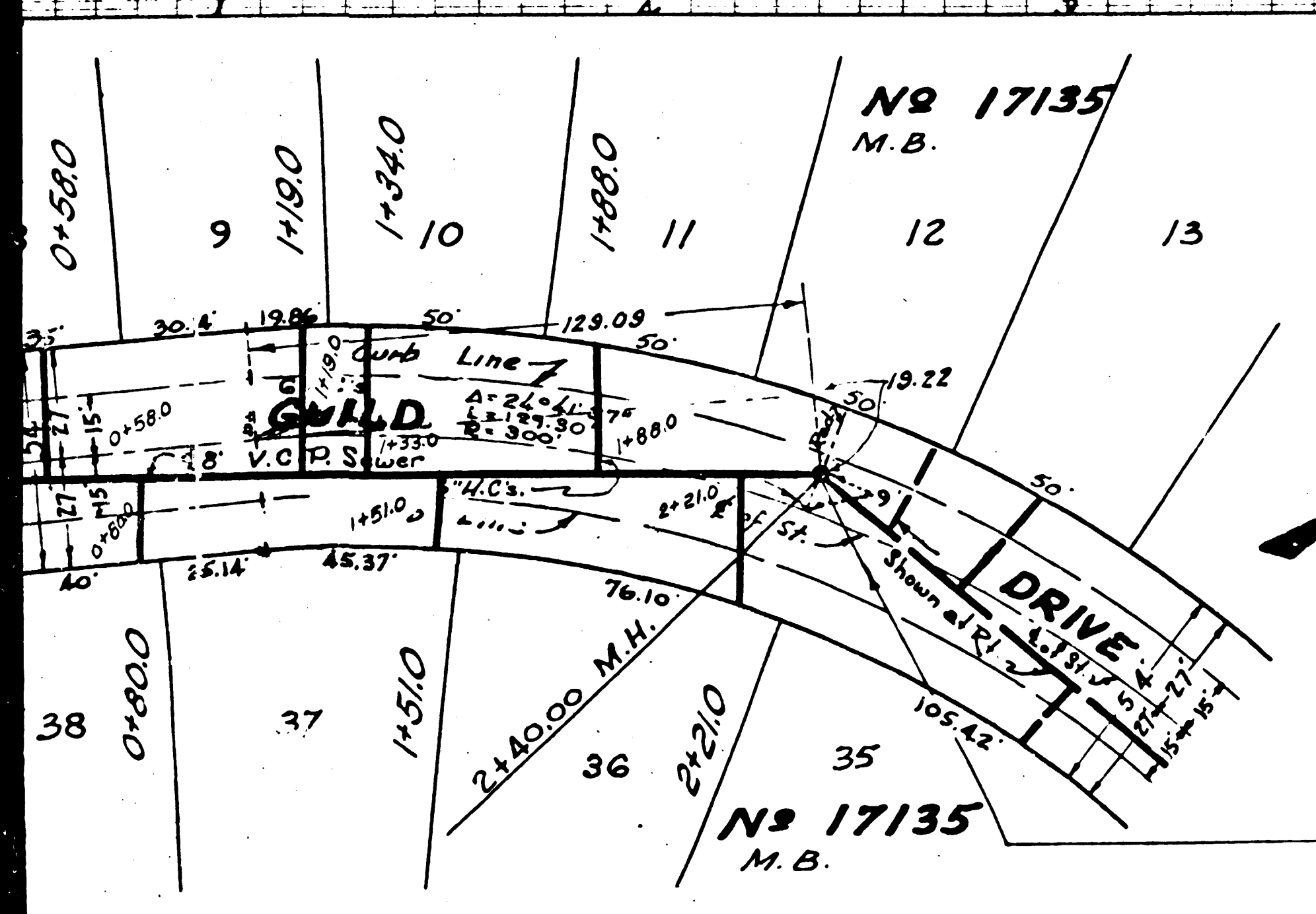
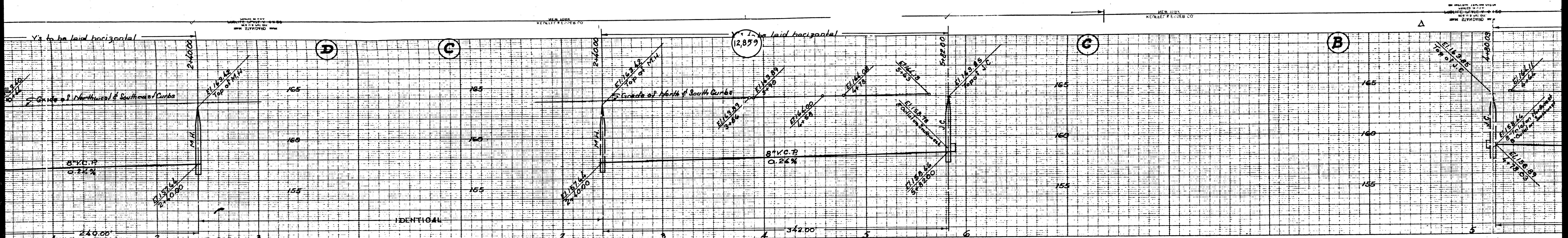




PORTION OF RANCHO PASO DE BARTOLO  
M.R. 23-55.56



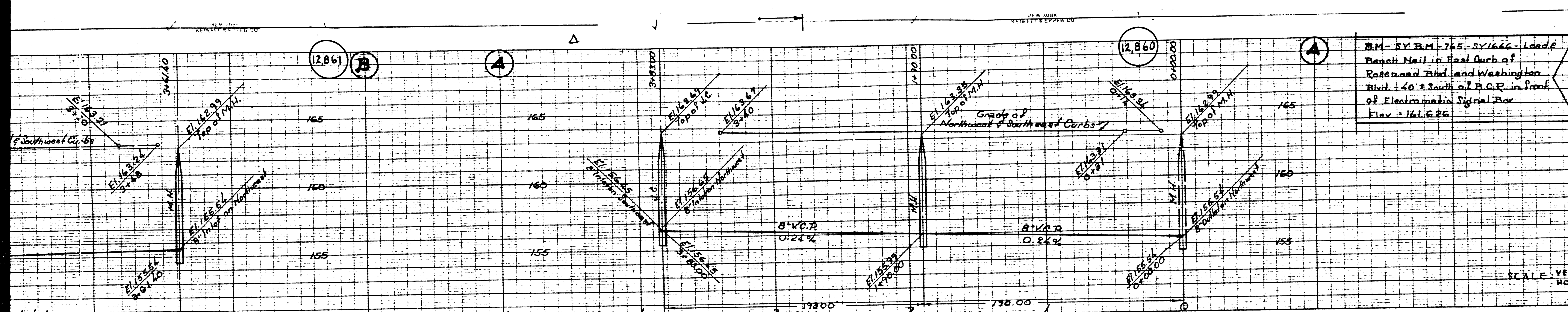




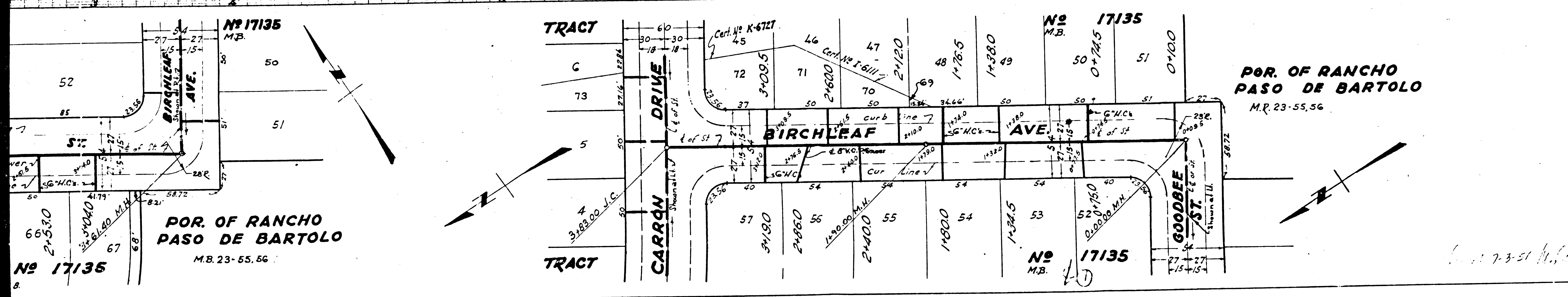
IDENTICAL POINTS

Detail of M.H.  
Sta. 4+80.03  
Scale: 1"=4'





**PROFILE ALIGNMENT AND GRADE OF  
SANITARY SEWERS  
TO BE CONSTRUCTED IN  
BIRCHLEAF AVE  
BETWEEN CARRON DRIVE AND GOODBEE ST.  
GOODBEE STREET  
BETWEEN CROSSWAY DRIVE AND BIRCHLEAF AVE  
CARRON DRIVE  
BETWEEN CROSSWAY DRIVE AND MANZANAR AVE  
IN TRACT NO. 17135  
PRIVATE CONTRACT NO. 1598  
W.S. 36  
SHEET 2 OF 2 SHEETS  
PREPARED IN THE OFFICES  
OF  
KEMMERER ENG. CO. INC.  
BY *H. J. Hook*  
REG. CE. NO. 1281  
FOR LEGEND SEE PLAN S-4-64.  
SEE SHEET 1 FOR CONSTRUCTION NOTES.  
DEC. 1950**



**APPROVED** *[Signature]*  
COUNTY ENGINEER  
**APPROVED BY** *[Signature]*  
OFFICE ENGINEER  
CITY ENGINEER  
SANITATION DISTRICT NO. 2  
**CHECKED BY** *[Signature]*  
OFFICE OF COUNTY ENGINEER  
REG. CE. NO. 2675  
JAN 12 1951  
SHEET 2 OF 2 SHEETS  
KEMMERER ENG. CO. INC.  
141 S. 6th St.  
SAN JOSE, CALIF. 95128



