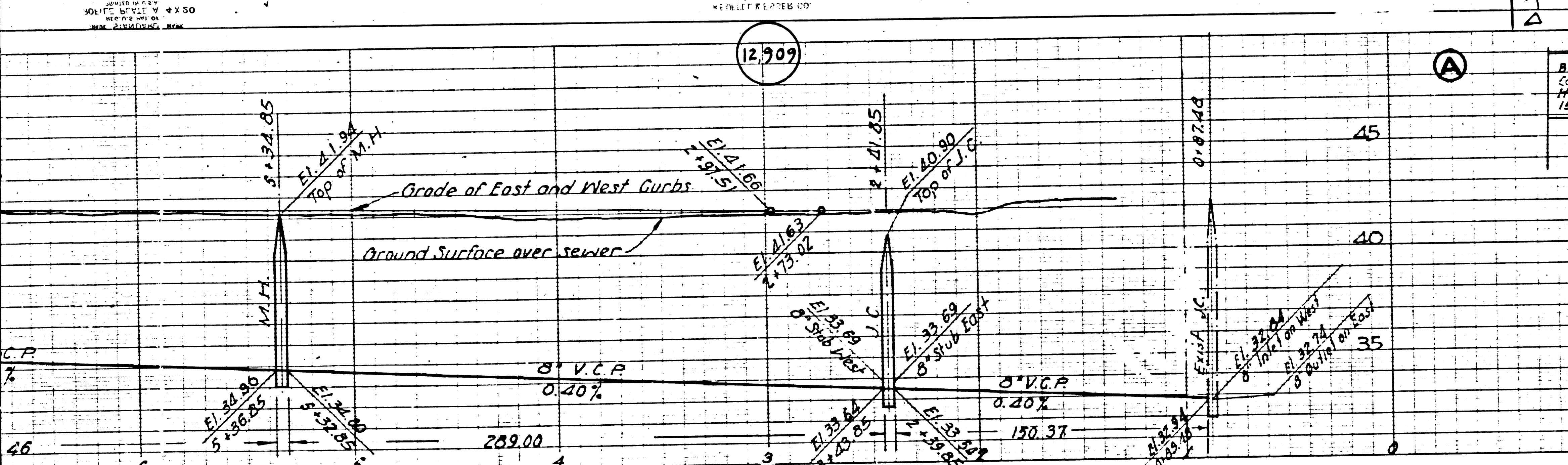


ON PLANS...  
SOUTH...  
...  
...

NEW YORK  
ENGINEERS & ARCHITECTS

NEW YORK  
ENGINEERS & ARCHITECTS

ON PLANS...  
SOUTH...  
...  
...



B.M. Y-135 EL. 41.57  
Copper Disc in Conc. Culvert  
Headwall at Side of Cherry Ave  
157' W of Crenshaw Blvd.

- (1) USE STANDARD MANHOLE FRAME AND COVER, S. & N.T.
  - (2) USE STANDARD STRENGTH PIPE.
  - (3) USE CEMENT MORTAR FOR ALL VITRIFIED CLAY PIPE JOINTS.
  - (4) RESURFACE ALL TRENCH WITHIN PAVED AREA TO MEET LOS ANGELES CO. ROAD DEPT. REQUIREMENTS.
  - (5) CONSTRUCT HOUSE CONNECTIONS WITH INVERT AT PROPERTY LINE (5) FT. BELOW CURB GRADE.
  - (6) ALL STRUCTURES SHALL BE BRICK SEWER STRUCTURES, 5'-8" DIA.
- Notes: Stopcock to be installed with joint surrounded by masonry structure at its place. Spaced Sec. 31, 40.  
Concrete pavement to be cut not less than 2" in depth with Concrete Saw, Spaced, Sec. 65.

NOTE: NO REPRESENTATIVE OF THE COUNTY ENGINEER WILL SURVEY OR LOCATE ANY PORTION OF THE WORK.  
THE OWNER OR HIS AUTHORIZED REPRESENTATIVE SHALL FURNISH THE COUNTY ENGINEER WITH SKEW SHEET'S FOUND EXISTENCE OF ALL HOUSE CONNECTIONS AND BRANCHES AND SHALL PROVIDE STAKES FOR THEM AT THEIR PROPER LOCATIONS. DIMENSIONS SHALL BE SHOWN IN ALL CHANGES. LOCATION SHALL BE DEMONSTRATED IN WRITING BY THE OWNER OR HIS REPRESENTATIVE.  
NO REVISION SHALL BE MADE IN THESE PLANS WITHOUT APPROVAL OF THE COUNTY ENGINEER.

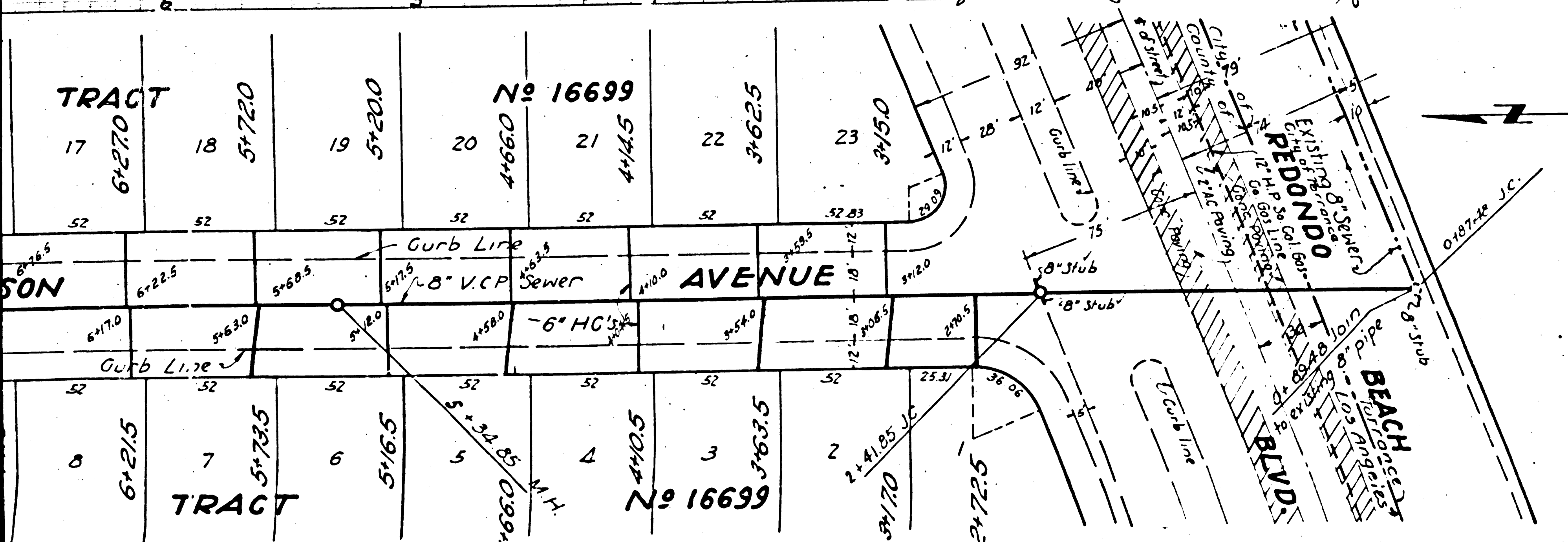
(12,908)  
**PROFILE, ALIGNMENT AND GRADE OF  
SANITARY SEWER  
TO BE CONSTRUCTED IN  
ATKINSON AVENUE**  
APPROX. 300 FT. EAST OF CRENSHAW BLVD.  
ON THE NORTH SIDE OF REDONDO BEACH BLVD.  
BETWEEN REDONDO BEACH BLVD. & A POINT 75'  
NORTHERLY THEREFROM.  
IN TRACT No. 16639, M.B.

**PRIVATE CONTRACT No. 1595**  
**SHEET 1 OF 1 SHEETS**  
W.S. 25      DECEMBER 1950

PREPARED IN THE OFFICES OF  
**BARCLAY SURVEYING CO.**

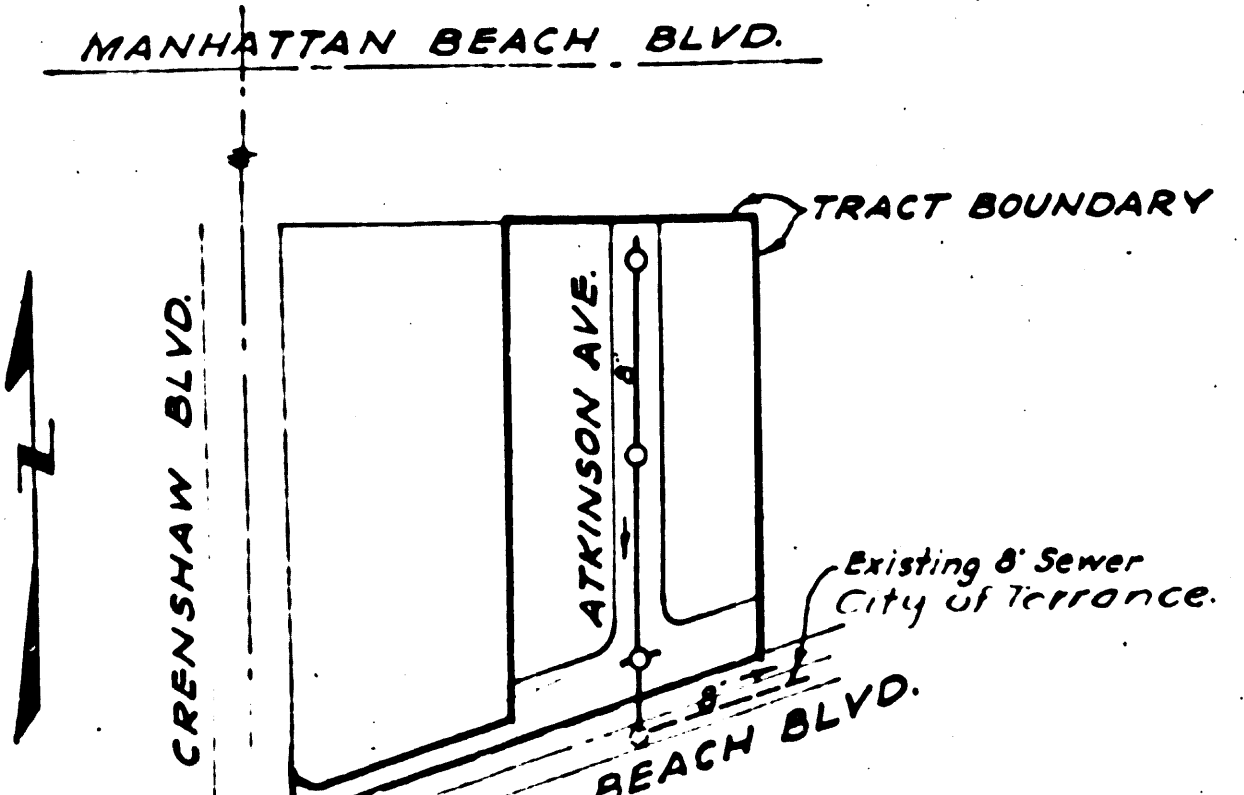
BY: *Sy Bate*  
REG. C.E. No. 1137

FOR LEGEND  
SEE PLAN No. S-64



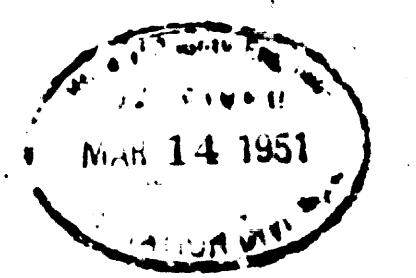
**NOTE:**  
APPROVED AS TO DESIGN ONLY; CONSTRUCTION  
CANNOT BE STARTED UNTIL APPROVAL &  
PERMISSION OF THE CITY COUNCIL OF THE CITY  
OF TORRANCE IS SECURED TO DISCHARGE THE  
SEWAGE INTO THE SEWER SYSTEM OF THE CITY  
OF TORRANCE.

*dated 7-3-51 M. J. ...*



INDEX MAP  
SCALE 1" = 300'  
PC. 1595-JN3695

NOTE: GRADES TO WHICH THIS IMPROVEMENT IS TO BE CONSTRUCTED ARE SHOWN ON PLANS AND PROFILE. GRADE POINTS FOR TOP OF CURB, CENTER LINE OF STREET, CENTER LINE OF ALLEY ARE SHOWN BY CIRCLES ON PROFILES. AT ALL POINTS BETWEEN DESIGNATED POINTS, THE GRADES SHALL BE ESTABLISHED SO AS TO CONFORM TO A STRAIGHT LINE DRAWN BETWEEN SAID DESIGNATED POINTS. ELEVATIONS ARE IN FEET ABOVE U.S.G. DATUM OR MEAN SEA LEVEL.  
THIS DRAWING AND THE DATA HEREON ARE HEREBY MADE A PART OF THE SPECIFICATIONS. WORK TO BE CONSTRUCTED ACCORDING TO SPECIFICATIONS ON FILE IN THE OFFICE OF THE COUNTY ENGINEER AND SHALL BE PROSECUTED ONLY IN THE PRESENCE OF THE COUNTY ENGINEER.  
BEFORE WORK CAN BE STARTED, THE CONTRACTOR MUST OBTAIN A PERMIT TO EXCAVATE IN COUNTY STREETS FROM THE L.A. CO. ROAD DEPT. 211 S. MAIN ST., L.A. AND MAKE A DEPOSIT WITH THE COUNTY ENGINEER 650 L.A. CO. BLDG. SUFFICIENT TO COVER THE COST OF CONSTRUCTION INSPECTION AND RECORD PLANS.  
APPROVAL OF THIS PLAN BY THE COUNTY OF LOS ANGELES DOES NOT CONSTITUTE A REPRESENTATION AS TO THE ACCURACY OF THE LOCATION OF, OR THE EXISTENCE OR NON-EXISTENCE OF ANY UNDERGROUND UTILITY, PIPE OR STRUCTURE WITHIN THE LIMITS OF THIS PROJECT.



APPROVED: *E. Arnold* COUNTY ENGINEER  
APPROVED: *A. M. Rawlin* Office Engineer  
CHIEF ENGINEER OF COUNTY SANITATION DISTRICT NO. 3

APPROVED: *J. ...* ASST. TO CITY ENGINEER  
CITY OF TORRANCE  
CHECKED BY: *H. ...* 3-6-1951  
OFFICE OF COUNTY ENGINEER  
R.C.B. NO. 6412

277

PC 1545

PC 1545

PC 1545

RF

