

(1) USE STANDARD MANHOLE FRAME AND COVER S-8-117  
 (2) USE STANDARD STRENGTH PIPE  
 (3) USE CEMENT MORTAR FOR ALL VITRIFIED CLAY PIPE JOINTS  
 (4) RESURFACE ALL TRENCH WITHIN PAVED AREA TO MEET LOS ANGELES COUNTY ROAD DEPT REQUIREMENTS IN ACCORDANCE WITH THE PERMIT  
 (5) CONSTRUCT HOUSE CONNECTIONS WITH INVERT AT PROPERTY LINE 3 FEET BELOW CURB GRADE  
 (6) ENCASE FOUR FEET OF SEWER AT POINTS OF INTERFERENCE WITH POLES AS PER S-8-119  
 (7) ALL STRUCTURES SHALL BE BRICK SEWER STRUCTURES S-8-108  
 (8) CONSTRUCT TOPS OF ALL STRUCTURES IN RIGHTS OF WAY 6' ABOVE FINISHED GRADE

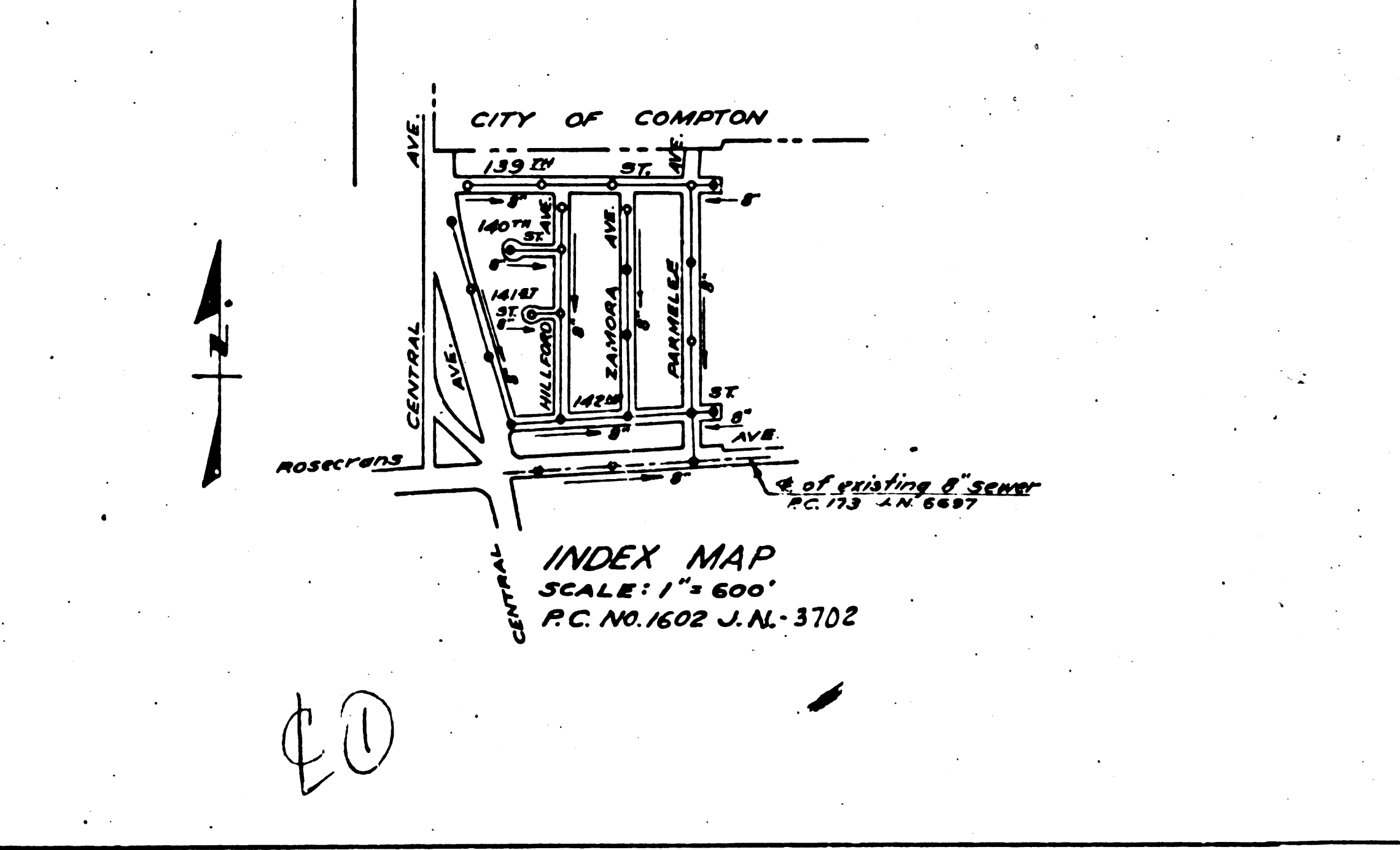
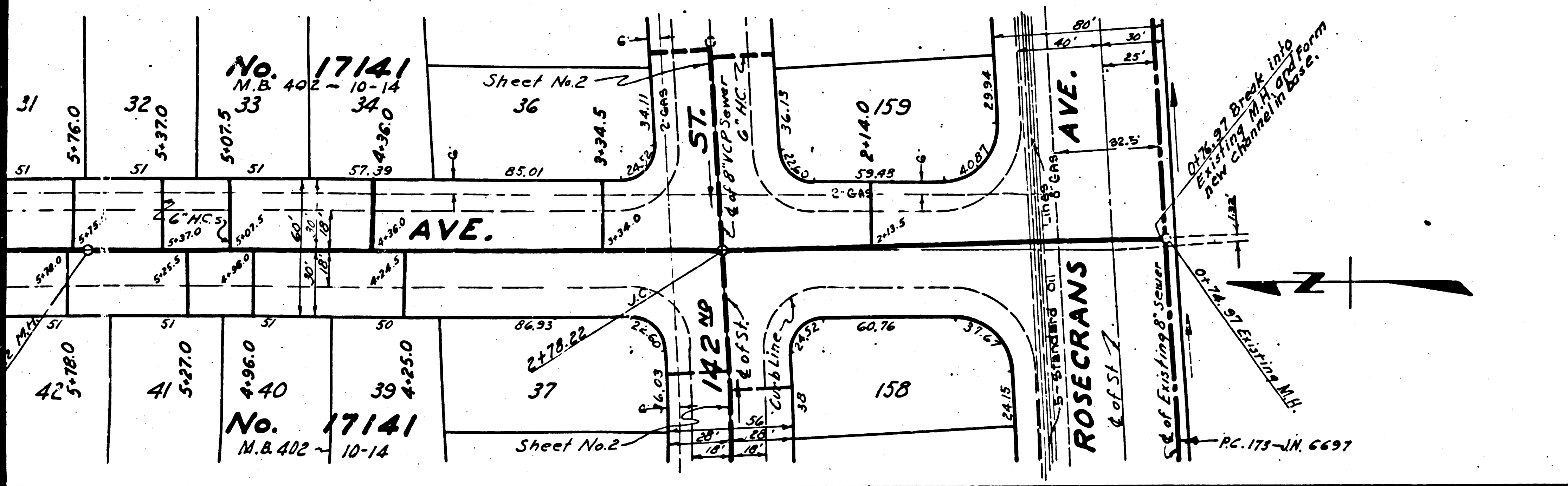
NOTE: No Representative of the County Engineer will survey or lay out any portion of the work. The owner or his authorized representative shall furnish the County Engineer with grade sheets and stationing, and all house connections and Y connections, and shall provide stakes for them at their proper locations with stringlines plainly marked. Any change of location shall be requested in writing by the owner or his representative.  
 No revisions shall be made to these plans without approval of the County Engineer.

NOTE: Provide stakes on the property lines or property lines produced at right angles to the sewer line at 200' centers, also at least 10' intervals.  
 Concrete pavement to be cut not less than 2" in depth with concrete saw.

M.M. No. 46-E, L.R.C.C. Brass Disk  
 Top of curb North Side Rosecrans Ave., 52' west of bridge  
 City of Compton Creek Elev. = 77.93, elev. D.B. to Sta. 10+54.10 = 107.428, Elev = 104.360.

(13,047) PROFILE ALIGNMENT AND GRADE OF  
**SANITARY SEWERS**  
 TO BE CONSTRUCTED IN  
**PARMELEE AVENUE**  
 BETWEEN ROSECRANS AVE AND 139<sup>TH</sup> ST  
**ZAMORA AVENUE**  
 BETWEEN 142<sup>ND</sup> ST AND 764.56 FT NORTHERLY THEREOF  
**HILLFORD AVENUE**  
 BETWEEN 142<sup>ND</sup> ST AND 775.56 FT NORTHERLY THEREOF  
**141<sup>ST</sup> STREET**  
 BETWEEN HILLFORD AVE AND 152.30 FT WESTERLY THEREOF  
**140<sup>TH</sup> STREET**  
 BETWEEN HILLFORD AVE AND 222.00 FT WESTERLY THEREOF  
 IN TRACT NO. 17141 M.B. 402 10-14  
 PRIVATE CONTRACT NO. 1602  
 W.S. 25  
 SHEET 1 OF 2 SHEETS

PREPARED IN THE OFFICES OF  
 W.M. FAIR JR.  
 SCALE: VERT. 1" = 6'  
 HORIZ. 1" = 20'  
 APRIL 1951  
 BY *Richard F. Kuhn*  
 REG. P. E. NO. 5020



FOR LEGEND  
 SEE PLAN NO. 34-66

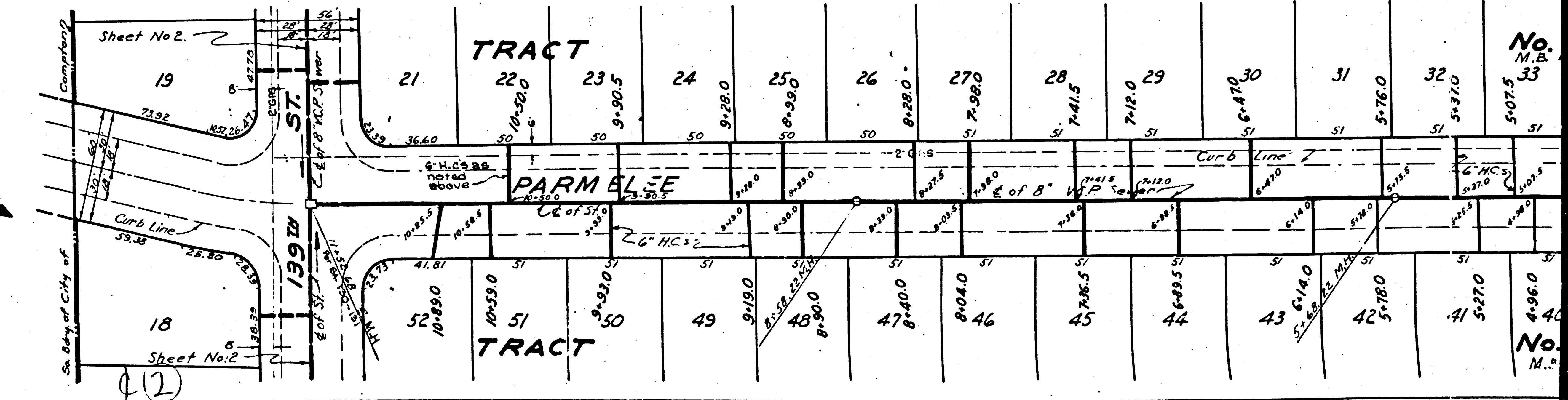
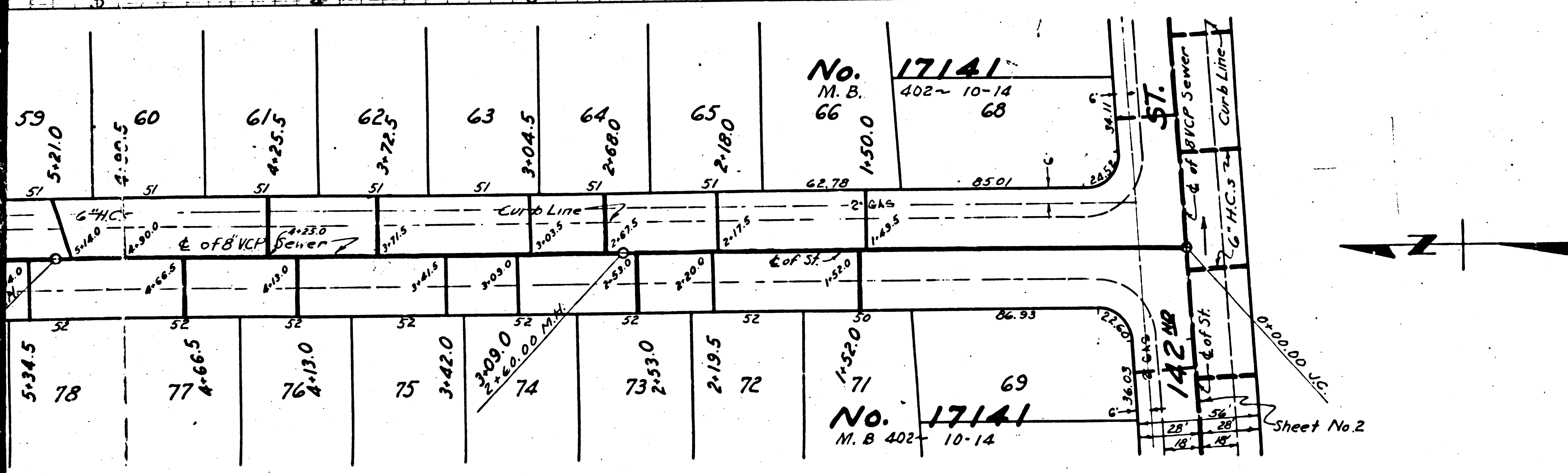
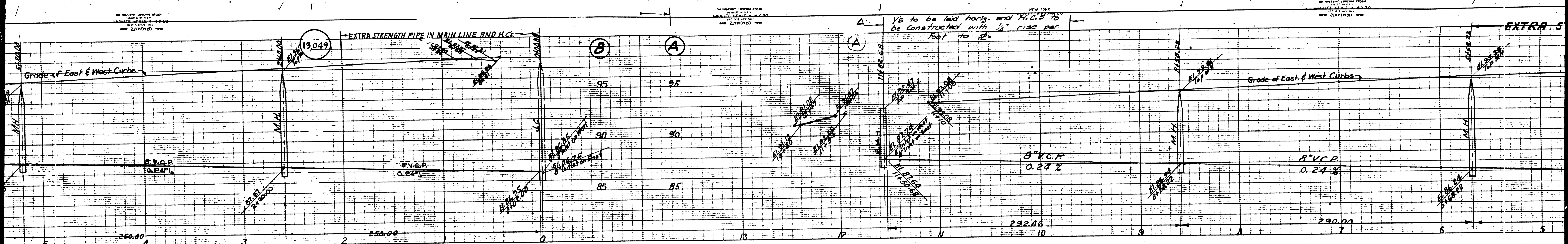
NOTE:  
 Grades to which this improvement is to be constructed are shown on Plans and Profile Grade points for top of curb center line of street or center line of alley are shown by circles on Profile. All points between designated points the grade shall be established so as to conform to a straight line drawn between said designated points.  
 Elevations are in feet above U.S.C. Datum or Mean Sea Level.  
 This drawing and the data hereon are hereby made a part of the specifications. Work shall be constructed according to specifications on file in the office of the County Engineer and shall be prosecuted only in accordance with the specifications. Before work can be started the Contractor must obtain a permit to occupy the County Streets from the L.A. County Road Dept. 211, to Allen Street and make a deposit with the County Engineer, 228 County Engineering Bldg., sufficient to cover the cost of construction, inspection and record plans.  
 If work is to be done in a State Highway, a permit must be obtained from the State of California, Division of Highways, 104 S. Spring St. after making the deposit with the County Engineer.  
 Approval of this plan by the County of Los Angeles does not constitute a representation as to the accuracy of the location of, or the existence, or non-existence of any underground utility, pipe or structure within the limits of this project.

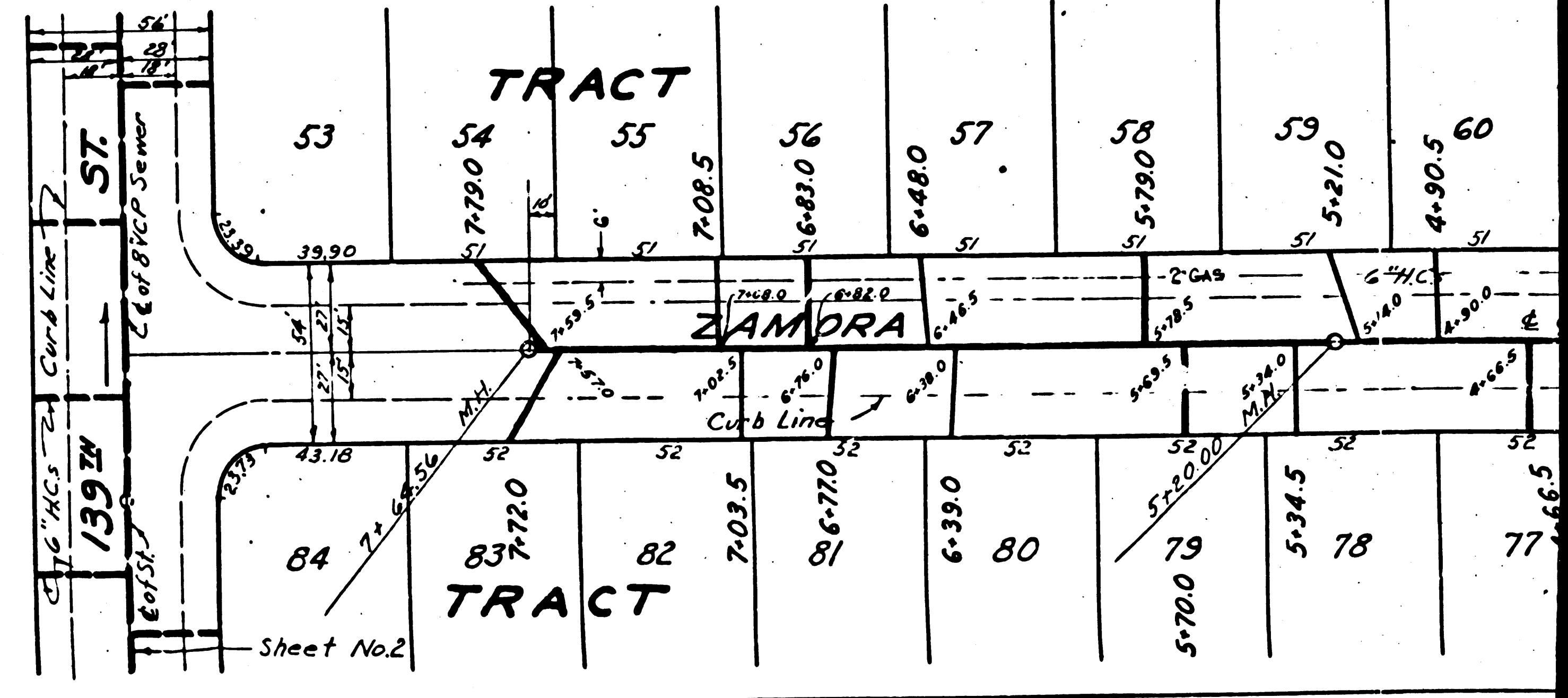
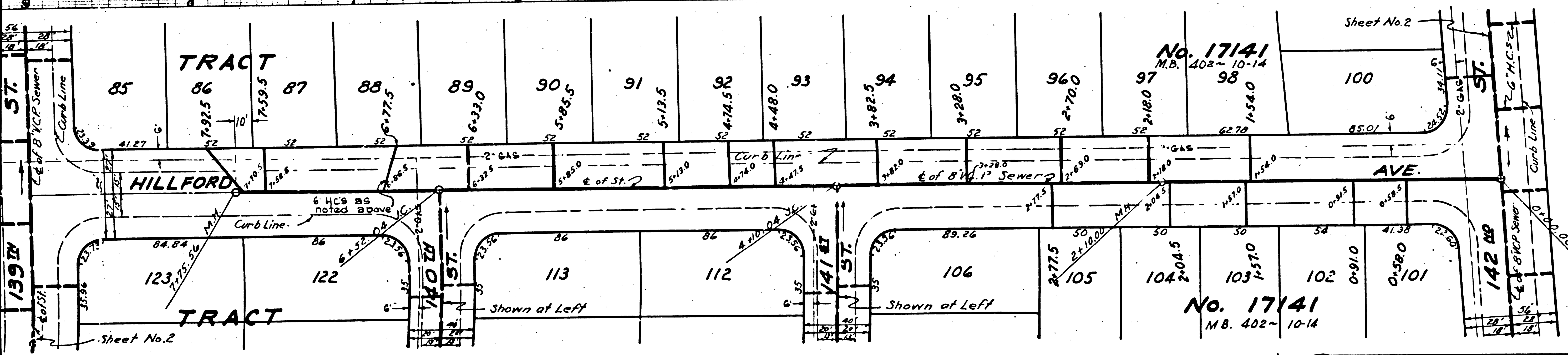
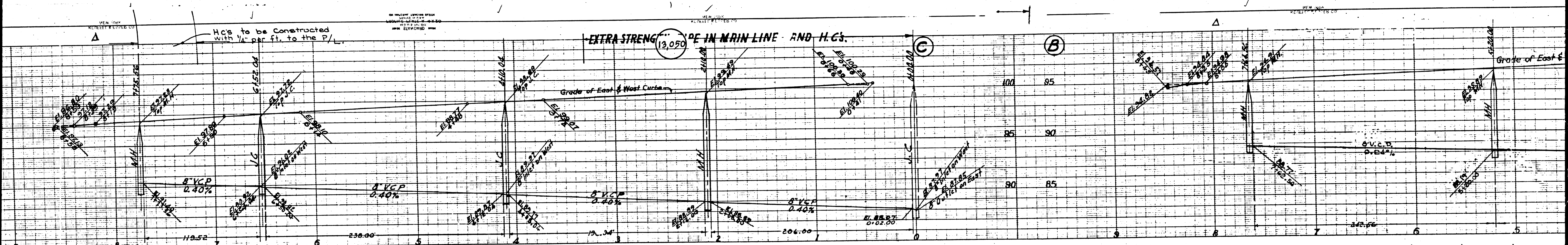
COUNTY OF LOS ANGELES, CALIFORNIA  
 A.M. RAWN  
 COUNTY ENGINEER

APPROVED: *Richard F. Kuhn* COUNTY ENGINEER  
 APPROVED BY: *Richard F. Kuhn* OFFICE ENGINEER  
 SANITATION DISTRICT NO. 1

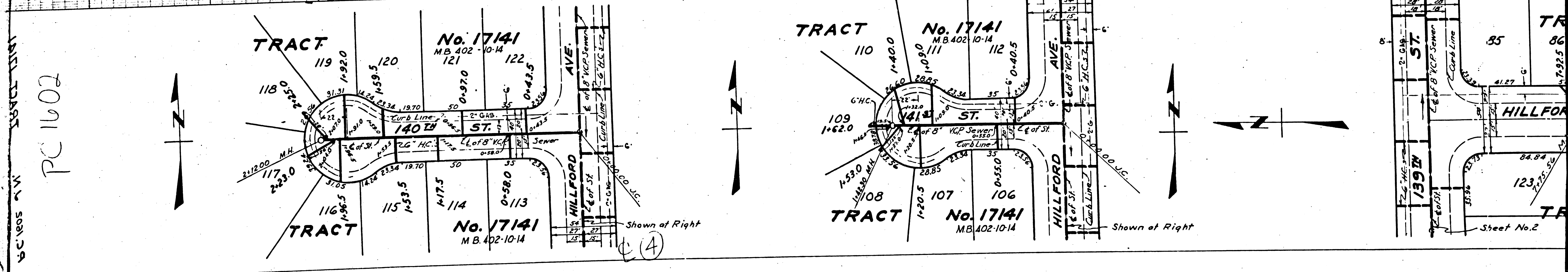
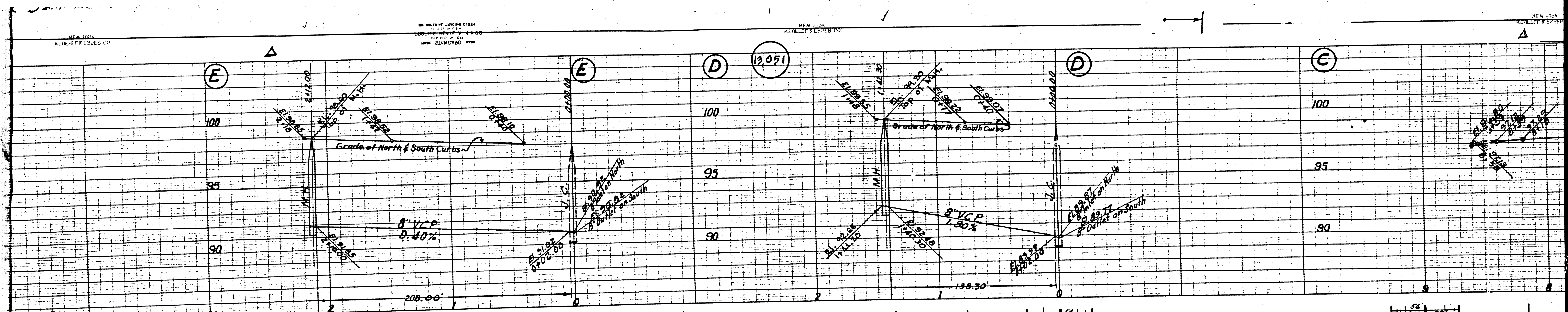
CHECKED BY: *Richard F. Kuhn* MAY 14 1951  
 OFFICE OF COUNTY ENGINEER REG. C.E. NO. 7850

MAY 23 1951  
 SANITATION DISTRICT NO. 1





(3)



PC 1602

(A)

(B)

(C)

ON HILLFORD LIVING TRACT  
 KENNEL & LUTHER CO.  
 1000 HILLFORD AVE. S.W.  
 ALBANY, OREGON 97321

NEW YORK  
 KENNEDY & LUTHER CO.

NEW YORK  
KALLEN & LORRAN CO.

NEW YORK  
KALLEN & LORRAN CO.

NEW YORK  
KALLEN & LORRAN CO.

NEW YORK  
KALLEN & LORRAN CO.

EXTRA STRENGTH PIPE IN MAIN LINE AND H.C's.

(13052)

(B)

(A)

(A)

(2)

PROFILE ALIGNMENT AND GRADE OF  
**SANITARY SEWERS**  
TO BE CONSTRUCTED IN  
**142<sup>ND</sup> STREET**  
BETWEEN 91.95 FT. EASTERLY OF PARMELEE AVE. AND CENTRAL AVE.  
**CENTRAL AVENUE**  
BETWEEN 142<sup>ND</sup> ST. AND 139<sup>TH</sup> ST. THERE  
**139<sup>TH</sup> STREET**  
BETWEEN 106.55 FT. EASTERLY OF PARMELEE AVE. AND  
91.75 FT. WASTERLY OF PARMELEE AVE.  
IN TRACT NO. 17141, M.B. 402-10-14  
PRIVATE CONTRACT NO. 1602  
W.S. 26  
SHEET 2 OF 2 SHEETS

D.M. No. 45-5, L.R.C.E.C. Draw  
Date: Apr of 1951, Northside  
Elevation from 25' mean of  
Tide gauge, Charted Coast  
Line = 72.38' (at 0.00' Sta. Sta.  
at 5.0' Int. = 43.23', Elev. 45.80).

SCALE: VERT. 1" = 4'  
HORIZ. 1" = 40'

April 1951

PREPARED IN THE OFFICES OF  
W.M. H. PAIR, JR.

BY *Edmund J. Spenser*  
REG. C.E. No. 13028

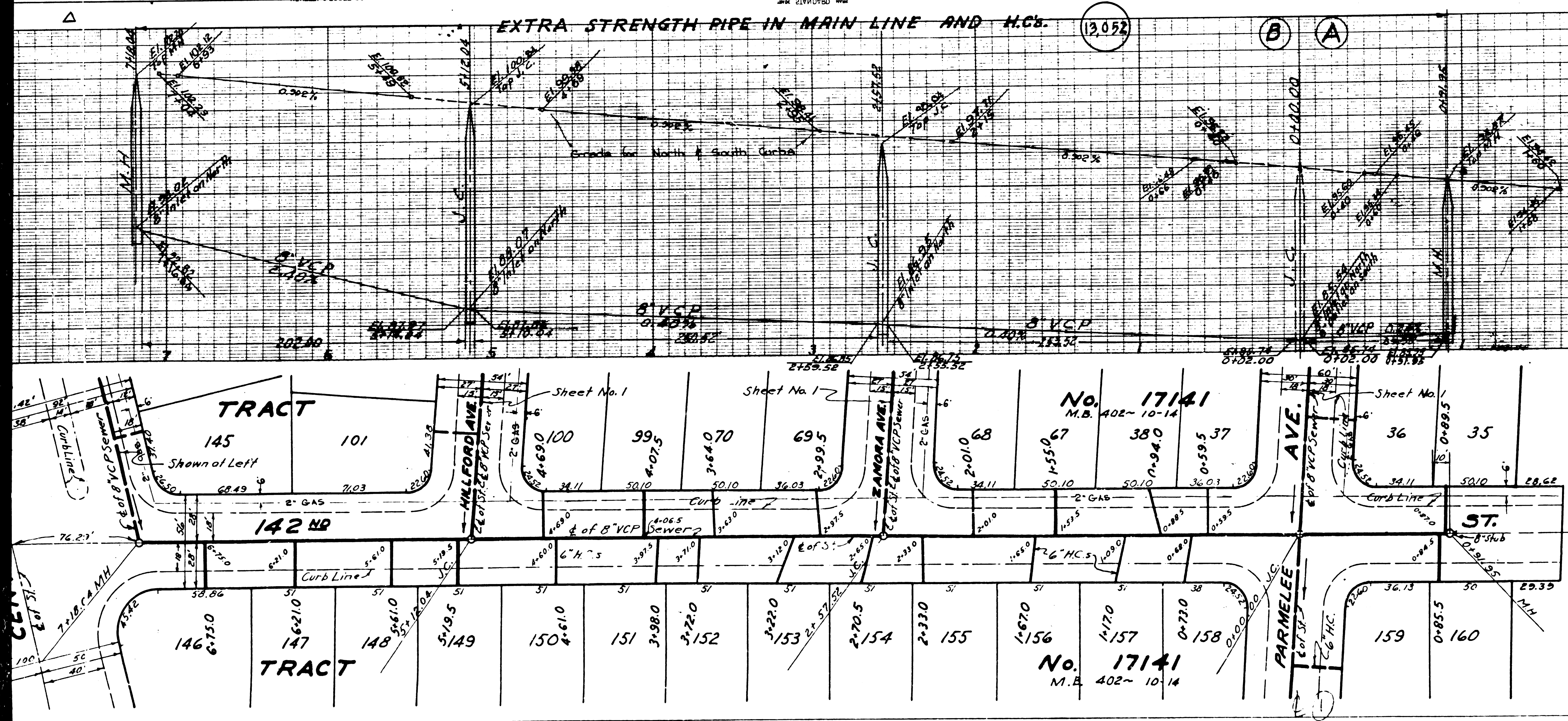
FOR LEGEND  
SEE PLAN NO. 1564  
See Sheet 1 for Construction Notes



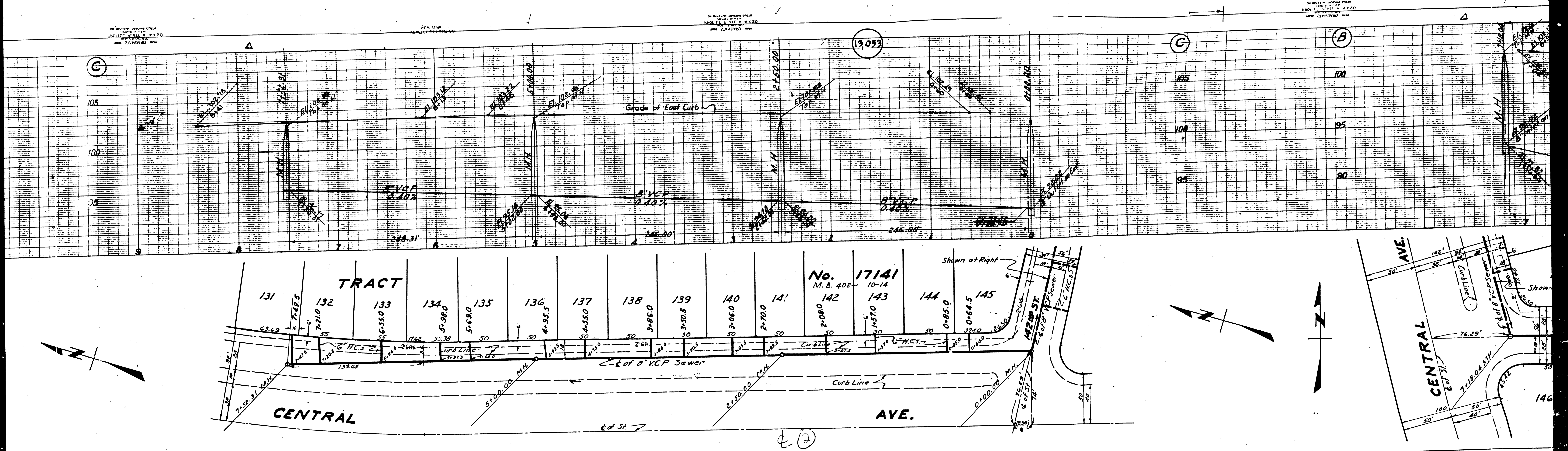
COUNTY OF LOS ANGELES, CALIFORNIA

APPROVED *Edmund J. Spenser* COUNTY ENGINEER  
APPROVED BY *A. H. RAWN* OFFICE ENGINEER  
CHIEF ENGINEER OF COUNTY  
SANITATION DISTRICT NO. 1

CHECKED BY: *Robert E. Baker* March 1951  
OFFICE OF COUNTY ENGINEER REG. C.E. No. 7860



1951 MAR 23 10 35 AM '51



©

105

100

95

1903

©

105

100

95

©

100

95

90

TRACT

131

132

133

134

135

136

137

138

139

140

141

No. 17141

M. B. 402-10-14

142

143

144

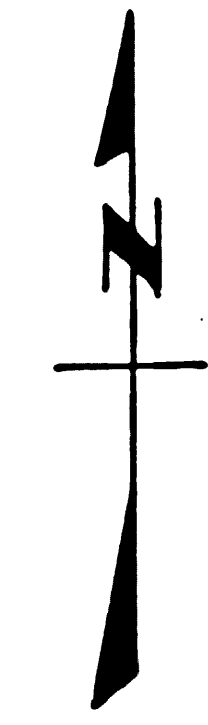
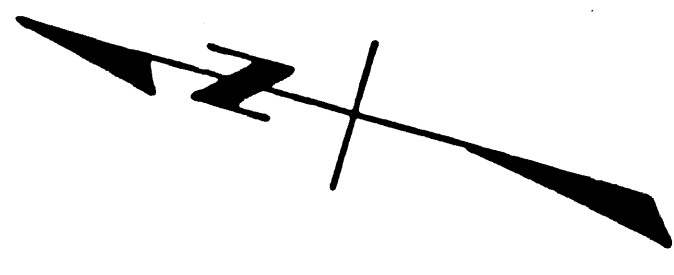
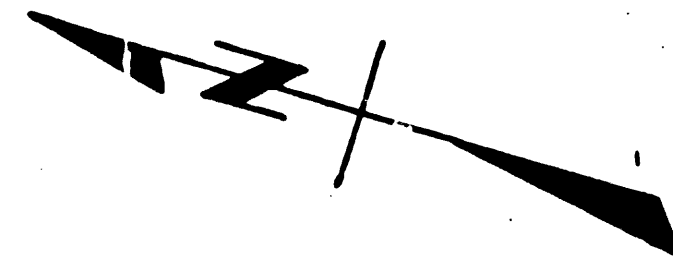
145

CENTRAL

AVE.

CENTRAL AVE.

146



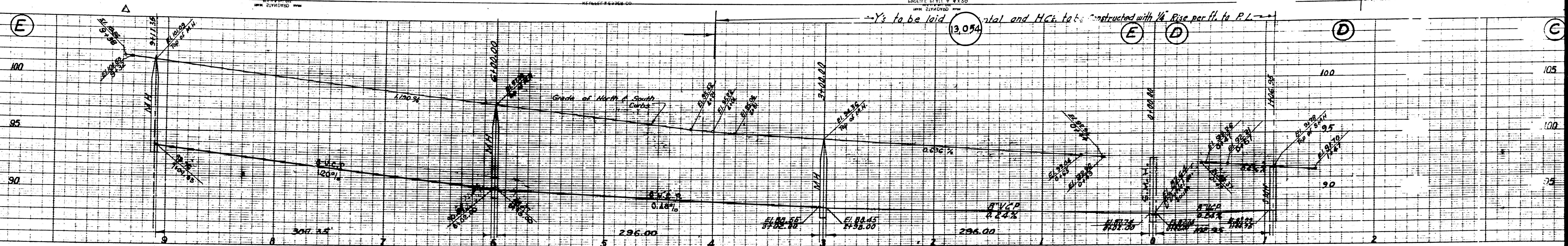
②

NEW YORK  
ENGINEERS & ARCHITECTS

NEW YORK  
ENGINEERS & ARCHITECTS

NEW YORK  
ENGINEERS & ARCHITECTS

NEW YORK  
ENGINEERS & ARCHITECTS



PC 1600

