

NOTE:
 1. THE COUNTY ENGINEER WILL SURVEY OR LAY OUT ANY PORTION OF THE WORK.
 2. THE OWNER OF THE AUTHORIZED REPRESENTATIVE SHALL FURNISH THE COMPANY ENGINEER WITH GRADE SHEETS AND...
 3. ALL HOUSE CONNECTIONS AND...
 4. USE STANDARD...
 5. USE...
 6. STOPPERS TO BE INSTALLED WITH JOINT COMPOUND BY MANUFACTURER AT HIS PLANT, SPEC. SEC. 13.10.
 7. CONCRETE PAVEMENT TO BE CUT NOT LESS THAN 1\"/>

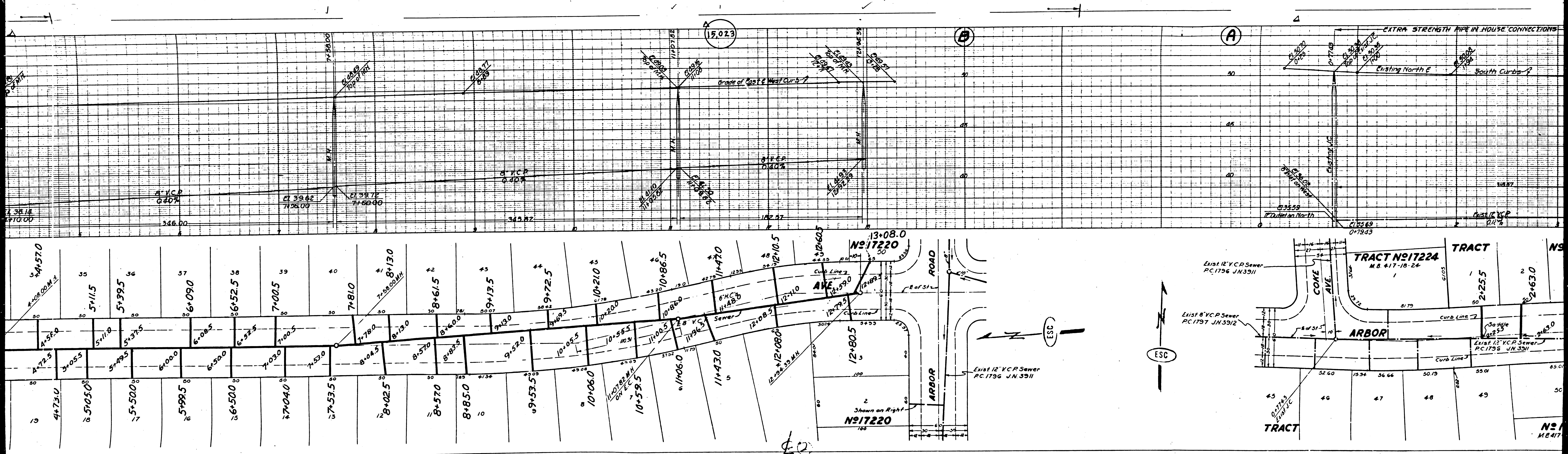
PROFILE, ALIGNMENT AND GRADE OF
SANITARY SEWERS
 TO BE CONSTRUCTED IN
DEL AMO BLVD.
 BETWEEN COLE AVE AND LAKELAND BLVD
HAYTER AVE.
 BETWEEN DEL AMO BLVD AND ARBOR RD
ARBOR RD.
 BETWEEN COLE AVE AND HAYTER AVE
 IN TRACT NO. 17220
 PRIVATE CONTRACT NO. 1810
 W.S. 30
 SHEET 1 OF 3 SHEETS
 NOV. 1951
 PREPARED IN THE OFFICES OF
ENGINEERING SERVICE CORPORATION

ENGINEERING SERVICE CORPORATION
 1127 A WASHINGTON BLVD
 LOS ANGELES 12, CALIF. REG. NO. 2281
 TRACED BY: C.M.E.
 CHECKED BY: C.M.E.
 SUBMITTED BY: C.M.E.
 NOV. 1951

NOTE:
 1. THE LOCATION OF ALL IMPROVEMENTS TO BE CONSTRUCTED ARE SHOWN ON PLANS AND PROFILES.
 2. THE CENTER LINE OF CURB, CENTER LINE OF STREETS, OR CENTER LINE OF ALLEY ARE SHOWN BY...
 3. ELEVATIONS ARE IN FEET ABOVE U.S.G.S. DATUM OR MEAN SEA LEVEL.
 4. THIS DRAWING AND THE DATA HEREON ARE HEREBY MADE A PART OF THE SPECIFICATIONS.
 5. THE CONTRACTOR SHALL BE RESPONSIBLE FOR OBTAINING ALL NECESSARY PERMITS AND...
 6. APPROVAL OF THIS PLAN BY THE COUNTY OF LOS ANGELES DOES NOT CONSTITUTE A REPRESENTATION...
 7. BEFORE BREAKING INTO ANY EXISTING STRUCTURE AND BEFORE FINAL ACCEPTANCE OF THIS WORK, COUNTY SANITATION DISTRICT SHOULD BE NOTIFIED IN ORDER THAT REQUIRED INSPECTION MAY BE MADE.

APPROVED BY: *William J. Fox* COUNTY ENGINEER
 CHIEF DEPUTY
 APPROVED BY: *Richard E. Peterson* CHIEF DEPUTY
 COUNTY SANITATION DISTRICT NO. 5
 CHECKED BY: *Richard E. Peterson* NOV. 11-11-51
 OFFICE OF COUNTY ENGINEER, REG. C. E. NO. 2840

B. J. WALKER & T. N. BROWN
 CIVIL ENGINEERS
 1215 W. 11TH ST.
 LOS ANGELES 15, CALIF.



15,023

A

B

EXTRA STRENGTH PIPE IN HOUSE CONNECTIONS

Existing North E South Curbs

Grade of East & West Curbs

8\"/>

8\"/>

8\"/>

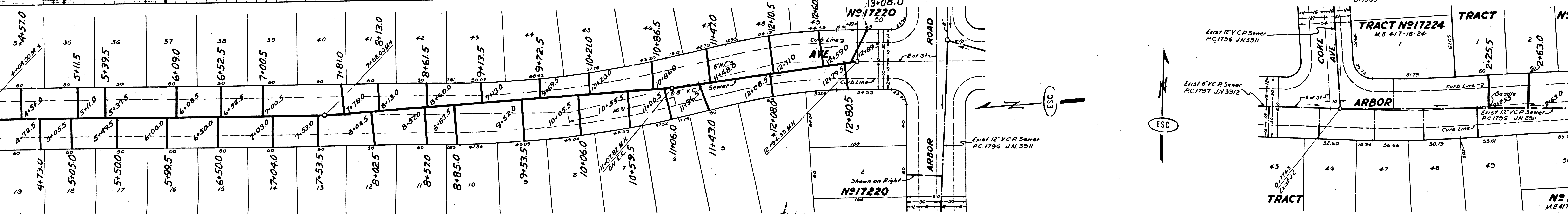
8\"/>

8\"/>

8\"/>

8\"/>

8\"/>



N°17220

TRACT N°17224

M.B. #17-18-24

ARBOR

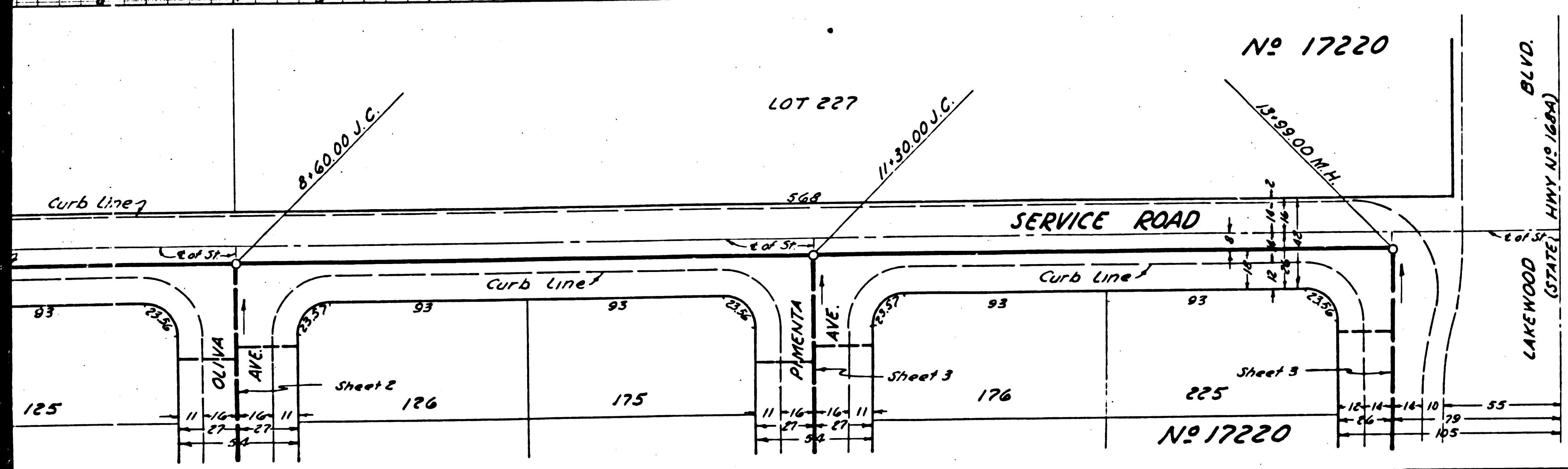
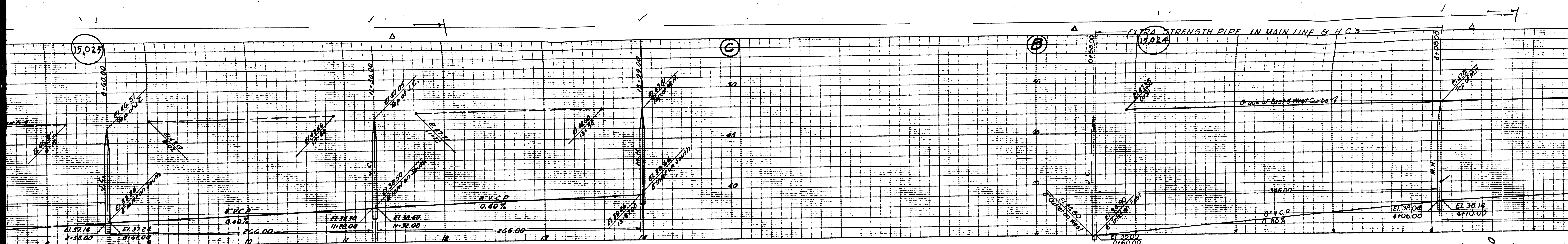
TRACT

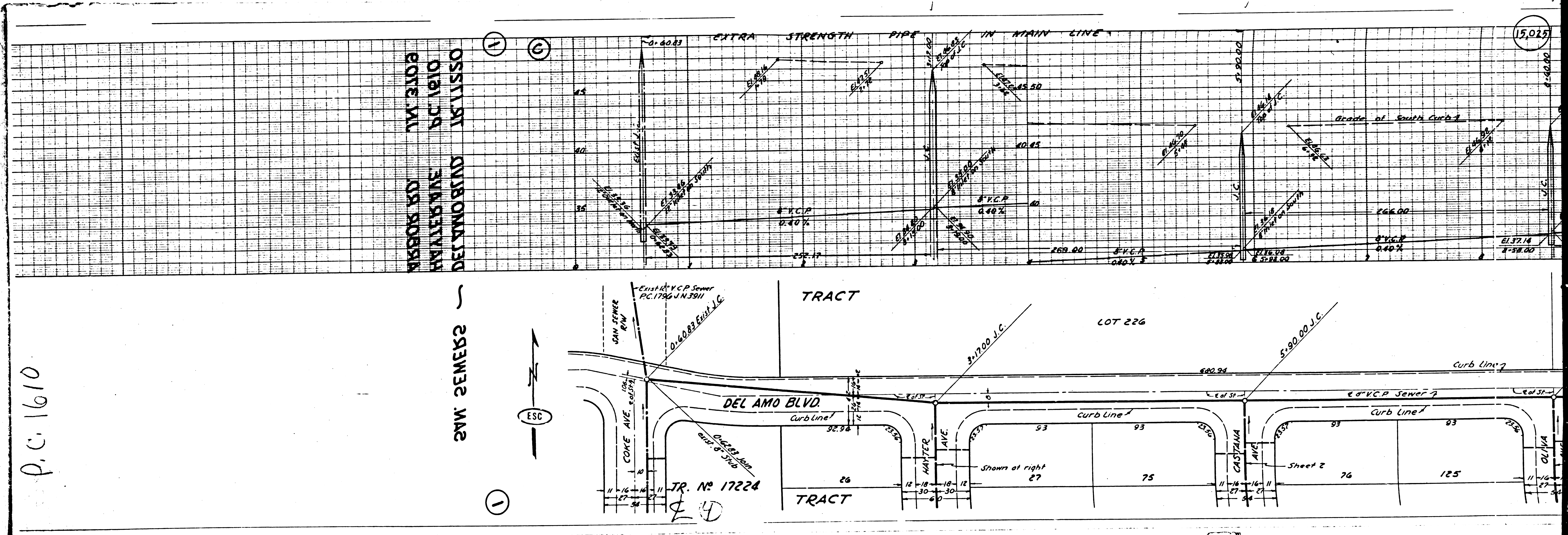
N°17220

ESC

ESC

40





P.C. 1610

2AW 2EMEK2

11 12

1

ESC

TR. No 17224

TRACT

TRACT

LOT 226

15,025

DEL AMO BLVD.

CASTANA AVE.

COKE AVE.

HAMNER AVE.

Exist. 8" VCP Sewer P.C. 1746 J.N. 3911

0+00.83 Exist. I.C.

0+00.83 J.C.

Shown at right

Sheet 2

76

125

8" V.C.P. 0.40%

8" V.C.P. 0.40%

8" V.C.P. 0.40%

8" V.C.P. 0.40%

8" V.C.P. 0.40%

8" V.C.P. 0.40%

8" V.C.P. 0.40%

8" V.C.P. 0.40%

8" V.C.P. 0.40%

8" V.C.P. 0.40%

8" V.C.P. 0.40%

8" V.C.P. 0.40%

8" V.C.P. 0.40%

8" V.C.P. 0.40%

8" V.C.P. 0.40%

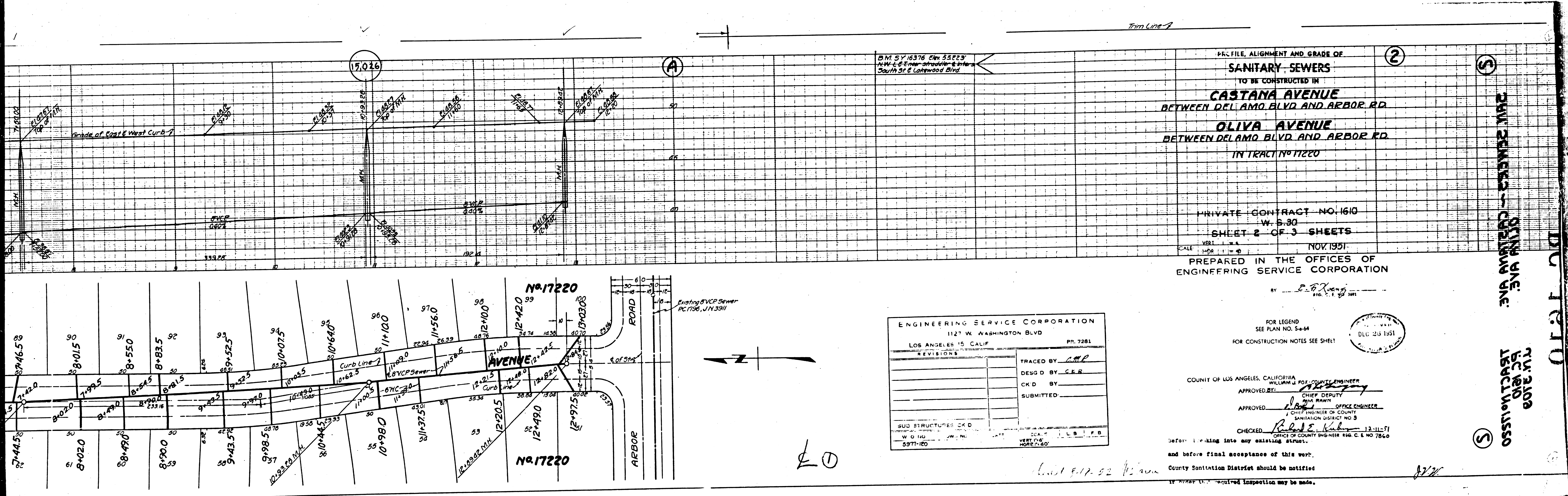
8" V.C.P. 0.40%

8" V.C.P. 0.40%

8" V.C.P. 0.40%

8" V.C.P. 0.40%

8" V.C.P. 0.40%



BM SY 16376 Elev 35223
NW-EE Corner of Del Amo & Arbor
South of E Lakewood Blvd

PROFILE, ALIGNMENT AND GRADE OF
SANITARY SEWERS
TO BE CONSTRUCTED IN
CASTANA AVENUE
BETWEEN DEL AMO BLVD AND ARBOR RD
OLIVA AVENUE
BETWEEN DEL AMO BLVD AND ARBOR RD
IN TRACT NO 17220

PRIVATE CONTRACT NO. 1610
W. S. 30
SHEET 2 OF 3 SHEETS
NOV. 1951
PREPARED IN THE OFFICES OF
ENGINEERING SERVICE CORPORATION

ENGINEERING SERVICE CORPORATION
1127 W. WASHINGTON BLVD
LOS ANGELES 15, CALIF. PR. 7281

REVISIONS	

TRACED BY C.M.P.
DESIGNED BY C.E.R.
CHECKED BY
SUBMITTED

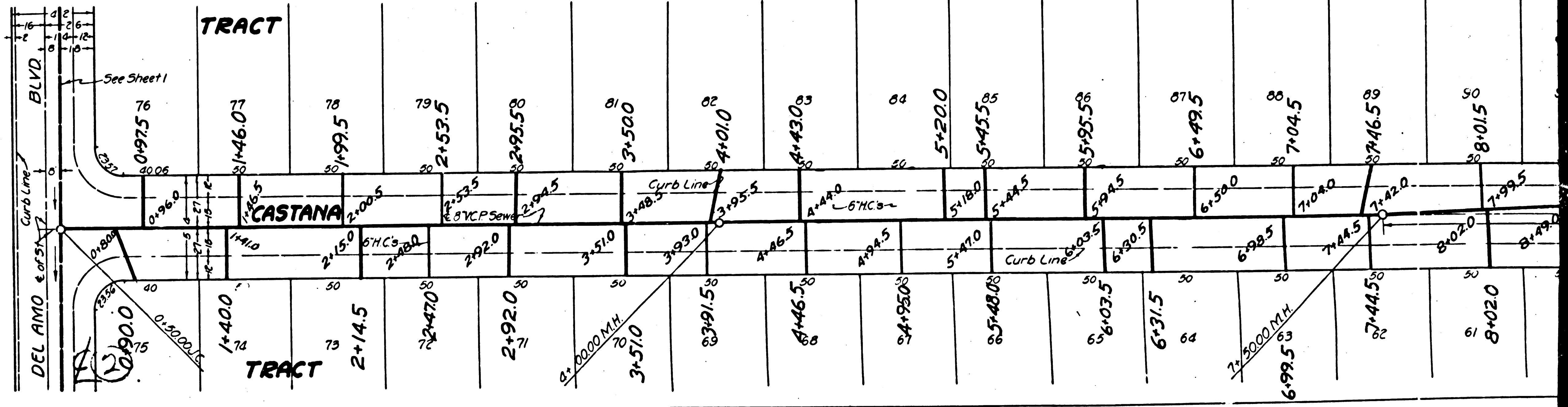
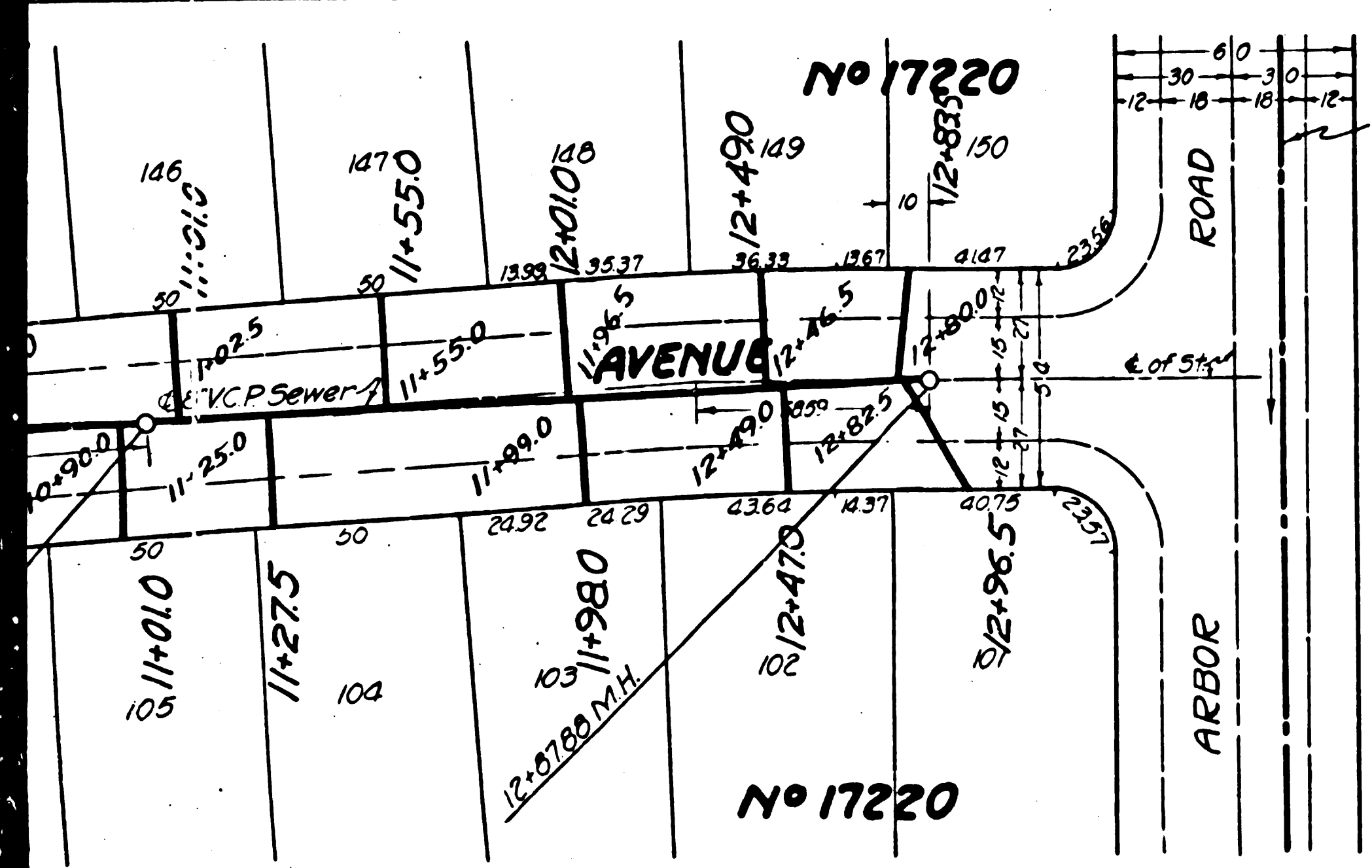
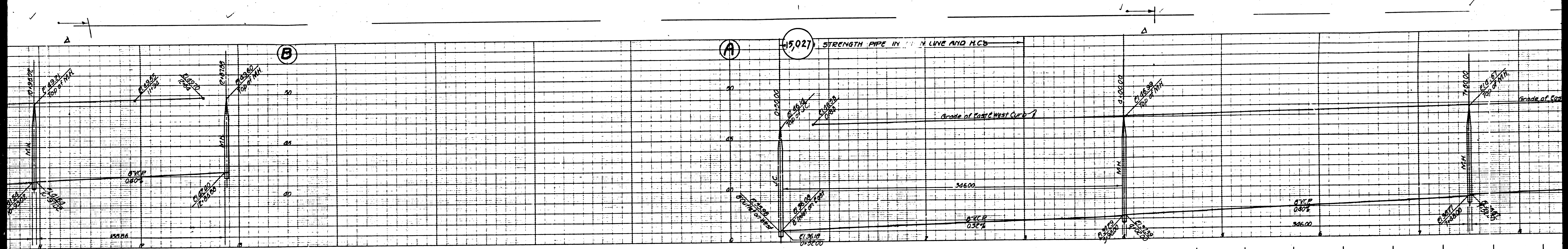
SUB STRUCTURES CHECKED
W. G. HO...
5977-160

FOR LEGEND SEE PLAN NO. S-64
FOR CONSTRUCTION NOTES SEE SHEET

COUNTY OF LOS ANGELES, CALIFORNIA
WILLIAM J. FOX, COUNTY ENGINEER
APPROVED BY: [Signature]
CHIEF DEPUTY COUNTY ENGINEER
OFFICE ENGINEER
CHIEF ENGINEER OF COUNTY SANITATION DISTRICT NO. 3
CHECKED: [Signature] 12-11-51
OFFICE OF COUNTY ENGINEER 416 C. E. NO 7660

Before putting into any existing street, and before final acceptance of this work, County Sanitation District should be notified if under its jurisdiction inspection may be made.

DEL AMO BLVD
 OLIVA AVE
 ARBOR RD
 TRACT NO 17220



P.C. 1620

DEL AMO BLVD - SEWER MAIN

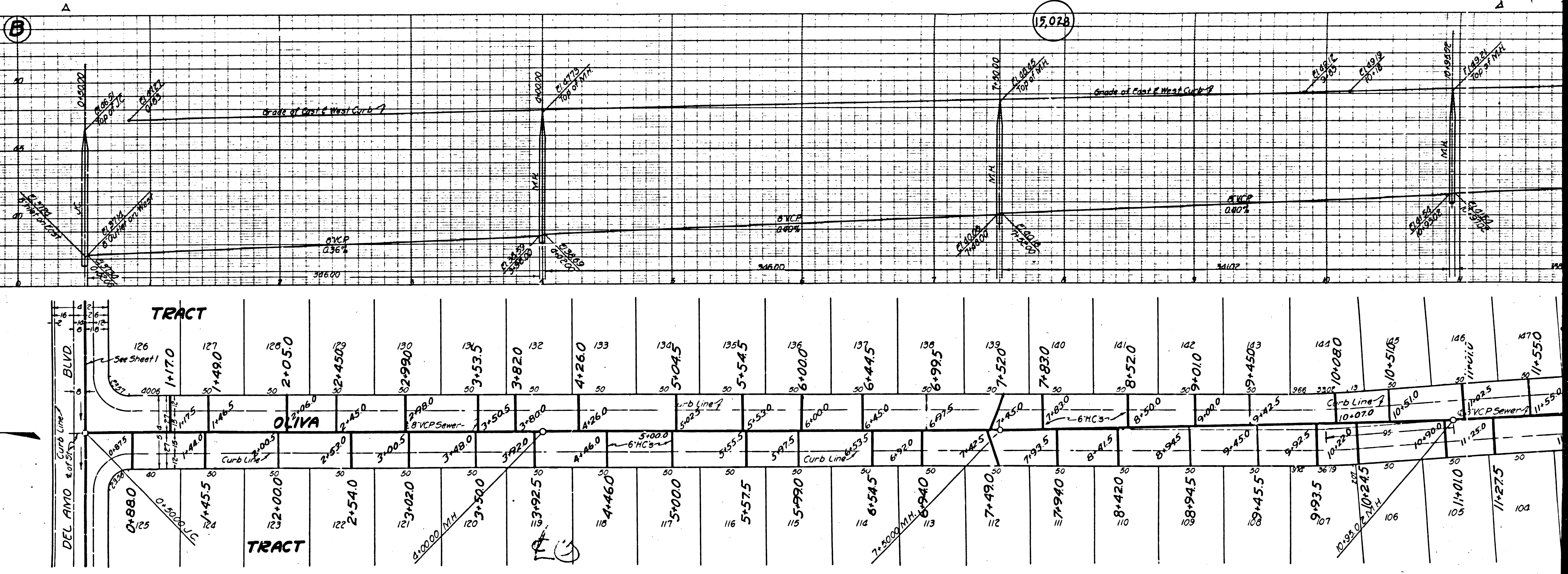
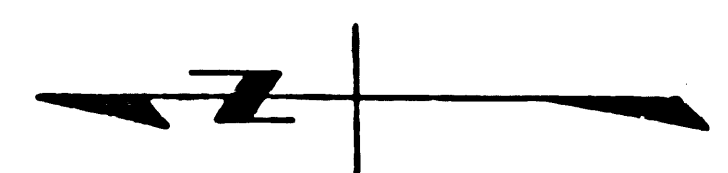
DEL AMO BLVD - SEWER MAIN

(1)

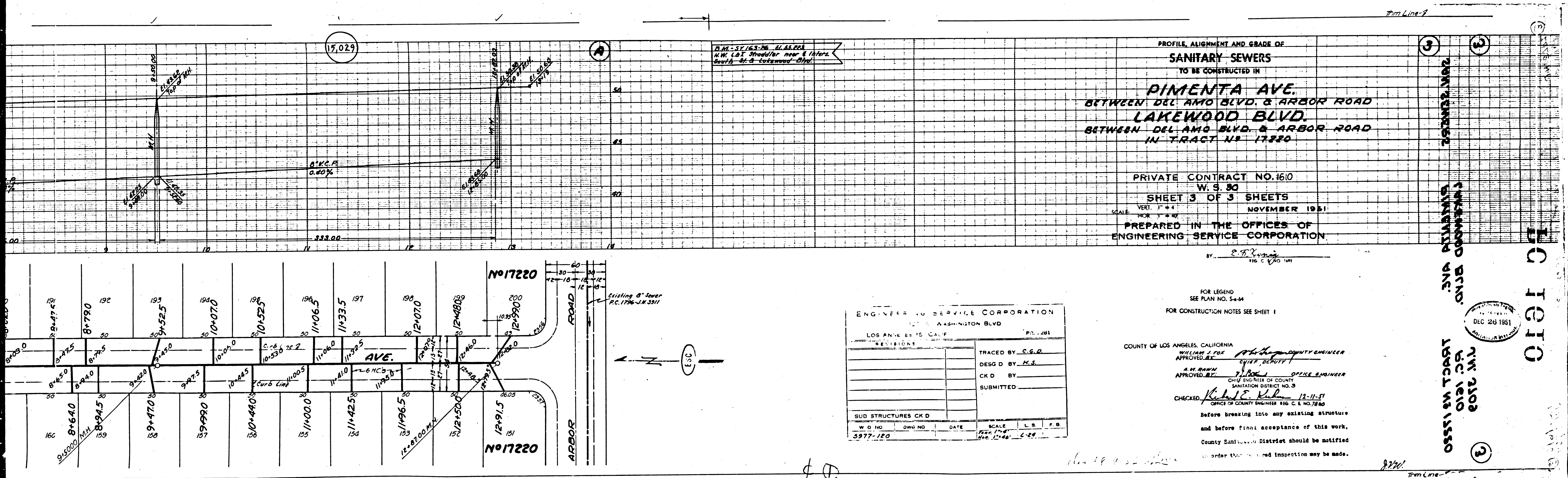
(5)

Trim Line

Trim Line



(15,024)



D.M. 57163-76 E.L. 65.000
 N.W. 1/4 1/4 Section near & above
 South St. & Lakewood Blvd.

PROFILE, ALIGNMENT AND GRADE OF
SANITARY SEWERS
 TO BE CONSTRUCTED IN
PIMENTA AVE.
 BETWEEN DEL AMO BLVD. & ARBOR ROAD
LAKWOOD BLVD.
 BETWEEN DEL AMO BLVD. & ARBOR ROAD
 IN TRACT NO. 17320

PRIVATE CONTRACT NO. 1610
 W. S. 80
 SHEET 3 OF 3 SHEETS
 SCALE: VERT. 1" = 4'
 HOR. 1" = 40'
 NOVEMBER 1951
 PREPARED IN THE OFFICES OF
ENGINEERING SERVICE CORPORATION

BY: *E.F. Young*
 116 C. 170 111

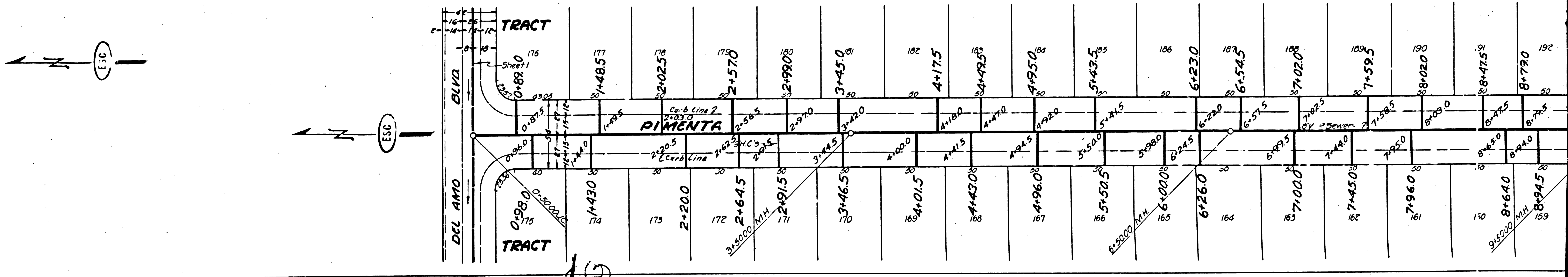
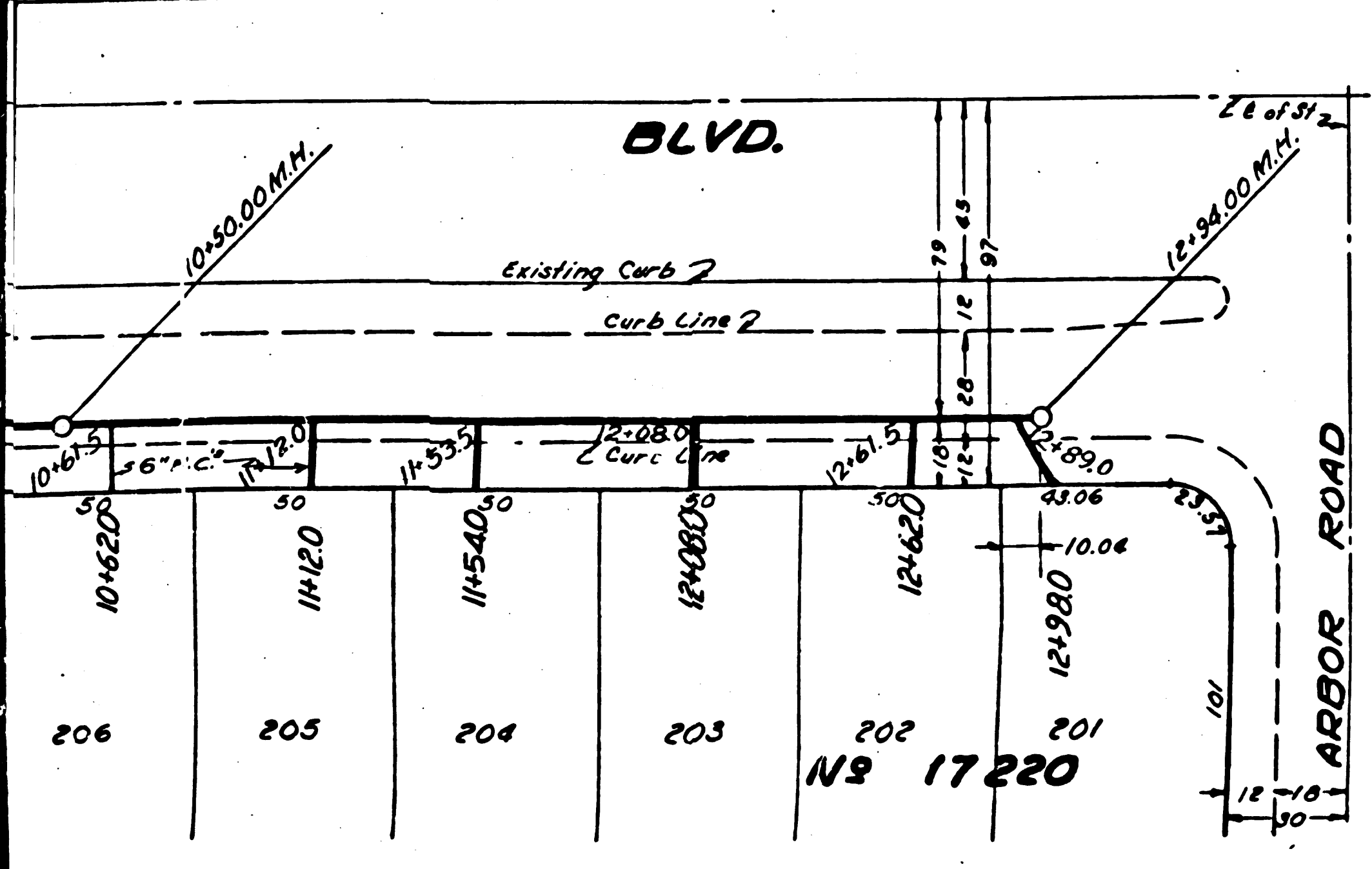
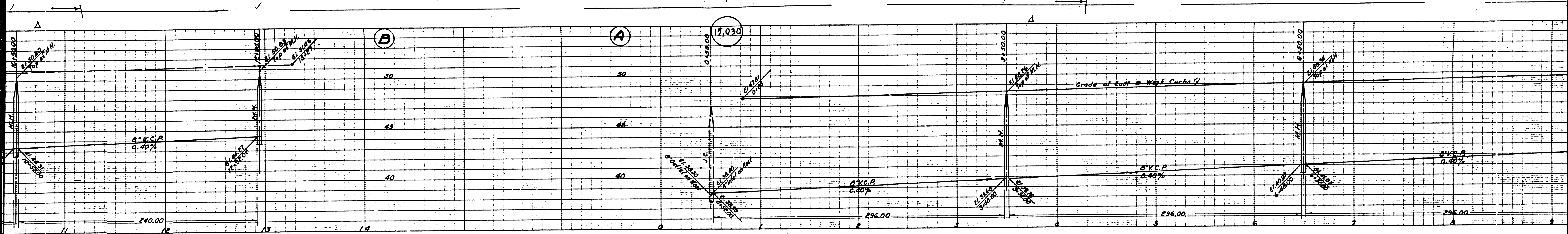
FOR LEGEND
 SEE PLAN NO. 54-44
 FOR CONSTRUCTION NOTES SEE SHEET 1

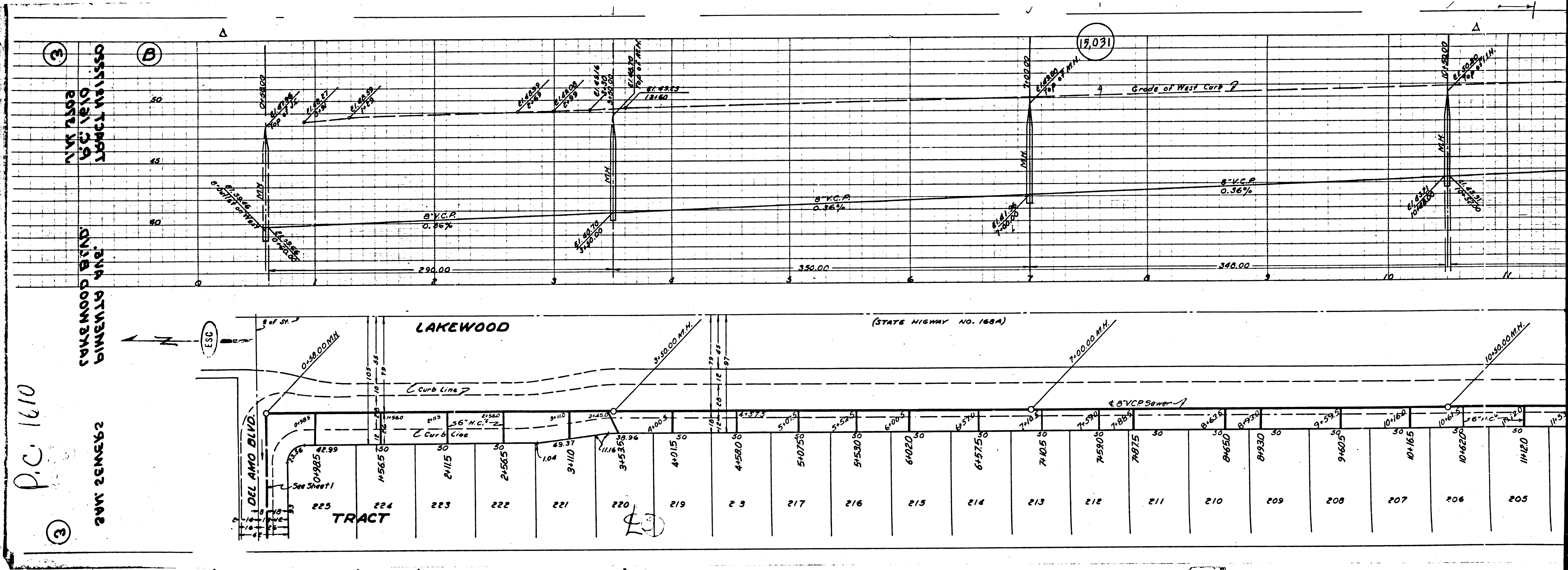
ENGINEERING SERVICE CORPORATION 1211 WASHINGTON BLVD LOS ANGELES 15, CALIF.			
REVISIONS	TRACED BY	C.E.D.	
	DESIGNED BY	H.S.	
	CHECKED BY		
	SUBMITTED		
SUB STRUCTURES CHECKED		SCALE	L.S. P.B.
W.D. NO.	D.W.D. NO.	DATE	
5977-120			

COUNTY OF LOS ANGELES, CALIFORNIA
WILLIAM J. FOX COUNTY ENGINEER
 APPROVED BY: *W. J. Fox* CHIEF DEPUTY
A.M. RAWIN OFFICE ENGINEER
 APPROVED BY: *A.M. Rawin* CHIEF ENGINEER OF COUNTY
 SANITATION DISTRICT NO. 3
 CHECKED: *Richard E. Rubin* 12-11-51
 OFFICE OF COUNTY ENGINEER 816 C. & NO. 7860
 Before breaking into any existing structure
 and before final acceptance of this work,
 County Sanitation District should be notified
 in order that required inspection may be made.

2001 CONCRETE
 LAKWOOD BLVD.
 PIMENTA AVE.
 TRACT NO. 17320
 (3)

EC 1610
 (3)





P.C. 1610

3
 CALEWOOD BLVD
 BIVEMENTA AVE.
 224 223 222 221 220 219 218 217 216 215 214 213 212 211 210 209 208 207 206 205