

PC 1642-1

PROFILE AND PLAN  
OF  
SEWER  
FROM  
TULITA AVENUE AT AVENUE G  
TO  
CLIFTON PUMPING PLANT  
AS PER CONTRACT DRAWINGS S.B. 2-35 OF THE  
SOUTH BAY CITIES SANITATION DISTRICT

PARTLY IN THE  
CITY OF REDONDO BEACH  
AND PARTLY IN THE  
COUNTY OF LOS ANGELES

U.S.C.S. DATUM

NOTE:  
ADD 0.10 TO ELEVATIONS SHOWN  
ON THIS PLAN TO ADJUST TO ELEVATIONS  
SHOWN ON CONTRACT DRAWINGS S.B. 2-35  
OF CLIFTON PLANNING PLANT BY S.B.C.S.D.

NOTES

1. ALL MAIN SEWER FROM STA. 11+62 TO STA. 15+00 SHALL BE 18" VITRIFIED CLAY PIPE, EXTRA STRENGTH.
2. ALL OTHER MAIN SEWER SHOWN ON THIS PLAN SHALL BE 18" VITRIFIED CLAY PIPE, STANDARD STRENGTH.
3. USE CEMENT MORTAR FOR ALL VITRIFIED CLAY PIPE JOINTS.
4. RESURFACE ALL TRENCH WITHIN AVOID AREAS TO MEET LOS ANGELES COUNTY ROAD DEPARTMENT REQUIREMENTS IN ACCORDANCE WITH PERMITS.
5. CONSTRUCT 2 HOUSE CONNECTIONS ON SOUTH SIDE OF AVENUE H WITH INVERT AT PROPERTY LINE AT ELEVATION SHOWN ON PLAN.
6. EXPOSE FOUR FEET OF SEWER AT POINTS OF INTERFERENCE WITH POLES OR PIPES PER S-B-18.
7. ALL STRUCTURES SHALL BE BRICK SEWER STRUCTURES, S-B-10A.
8. CONSTRUCT TOPS OF ALL STRUCTURES IN RIGHTS OF WAY AT FINISHED GRADE.

PORTIONS WITHIN CITY OF REDONDO BEACH  
APPROVED AND RESOLVED BY THE CITY COUNCIL OF  
THE CITY OF REDONDO BEACH, CALIFORNIA  
THIS 5<sup>TH</sup> DAY OF JANUARY, 1951.

*Fred M. Board*  
CITY CLERK

FILED IN THE OFFICE OF THE CITY ENGINEER OF  
THE CITY OF REDONDO BEACH, CALIFORNIA  
THIS \_\_\_ DAY OF \_\_\_ 1951.

CITY ENGINEER OF THE CITY OF REDONDO BEACH.

PORTIONS WITHIN CITY OF REDONDO BEACH  
APPROVED  
THIS 9<sup>TH</sup> DAY OF FEBRUARY, 1951.

*W. S. Fisher*  
CITY ENGINEER OF THE CITY OF REDONDO BEACH.

APPROVED  
THIS \_\_\_ DAY OF \_\_\_ 1951.  
ASST. TO CITY ENGR. - CITY OF TORRANCE.

APPROVED BY: *A. M. Rawlin* OFFICE ENGINEER  
CHIEF ENGINEER LOS ANGELES COUNTY  
DISTRICT - SOUTH BAY CITIES.

NOTE: REPRESENTATIVE OF THE COUNTY ENGINEER SHALL VERIFY THE EXISTENCE OF ALL HOUSE CONNECTIONS AND 1" BRICKWORK AND SHALL BE CONSTRUCTED ACCORDING TO SPECIFICATIONS ON FILE IN THE OFFICE OF THE COUNTY ENGINEER, AND SHALL BE PROTECTED ONLY IN THE PRESENCE OF THE COUNTY ENGINEER.

NOTE: BEFORE WORK SHALL BE STARTED THE CONTRACTOR SHALL OBTAIN A PERMIT TO EXCAVATE IN COUNTY STREETS FROM THE L.A. COUNTY ROAD DEPT. IN 24 HOUR STREETS AND MAKE A DEPOSIT WITH THE COUNTY ENGINEER, SEE L.A. COUNTY ENGINEERING PLAN, SUBMITTAL TO THE CITY OF REDONDO BEACH AND REDONDO PLANS.

NOTE: APPROVAL OF THIS PLAN BY THE COUNTY OF LOS ANGELES DOES NOT CONSTITUTE A REPRESENTATION AS TO THE ACCURACY OF THE LOCATION OR THE EXISTENCE OF ANY UNDERGROUND UTILITIES, PIPE OR STRUCTURE WITHIN THE LIMITS OF THIS PROJECT. IT IS STIPULATED TO BE INSTALLED WITH CARE COMPARED BY MANUFACTURER AT HIS PLANT. SPEC. S.B. 2-35.

PRIVATE CONTRACT NO. 1642  
W.S. 27 J.N. 9744  
CONSISTING OF 1 SHEET.

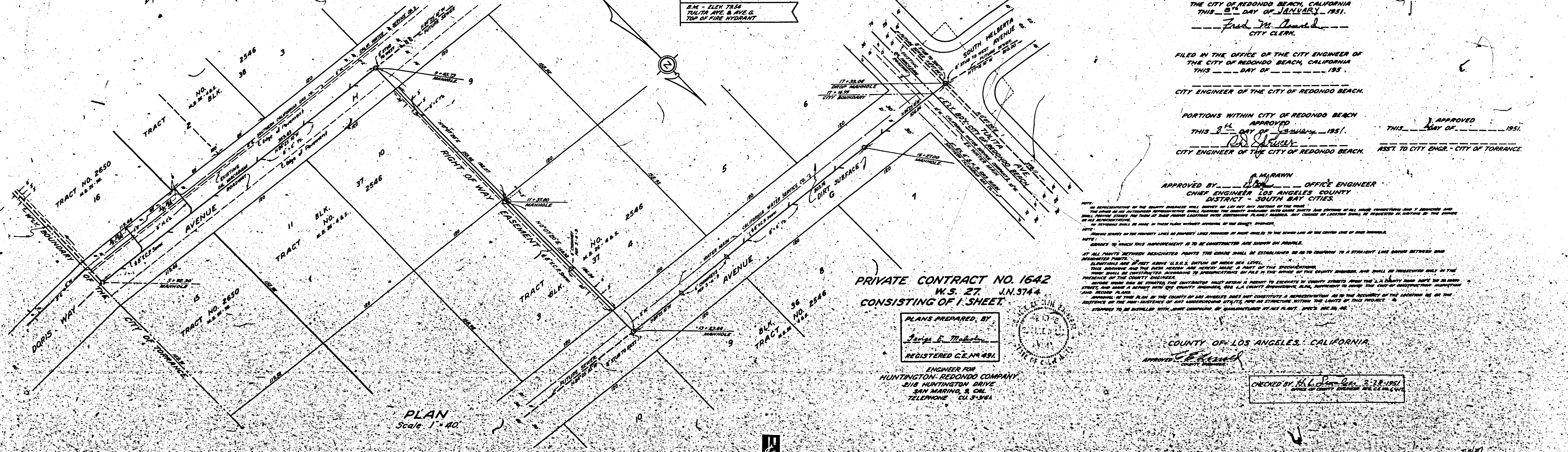
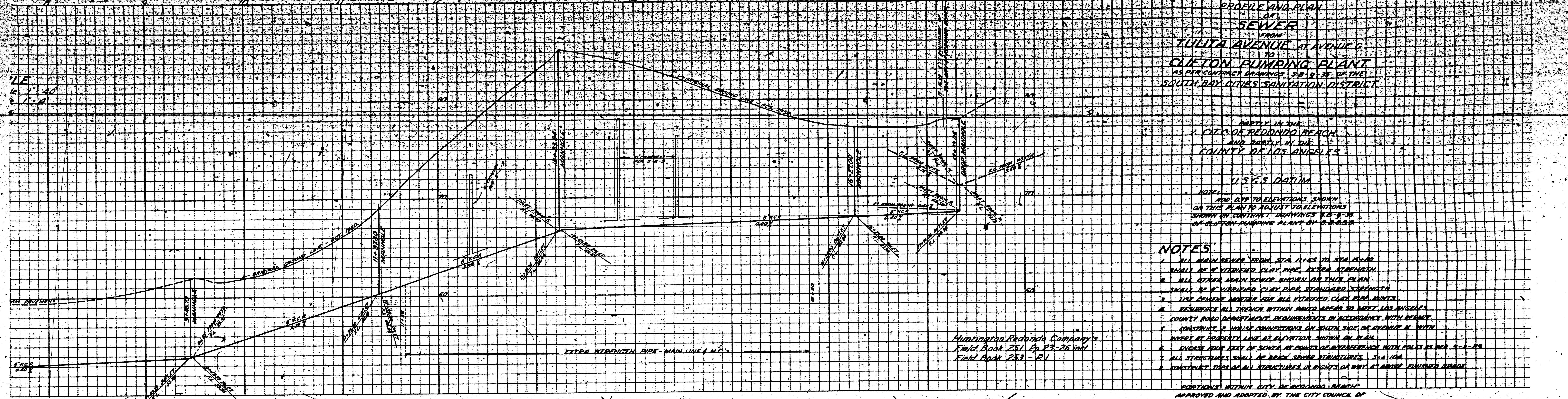
PLANS PREPARED BY  
*George E. Moberg*  
REGISTERED C.E. NO. 491

ENGINEER FOR  
HUNTINGTON-REDONDO COMPANY  
2118 HUNTINGTON DRIVE  
SAN MARRINO, CALIF.  
TELEPHONE CU 3-3661



COUNTY OF LOS ANGELES, CALIFORNIA  
APPROVED: *W. S. Fisher*

CHECKED BY: *H. L. ...* 2-28-1951  
SEAL OF COUNTY ENGINEER

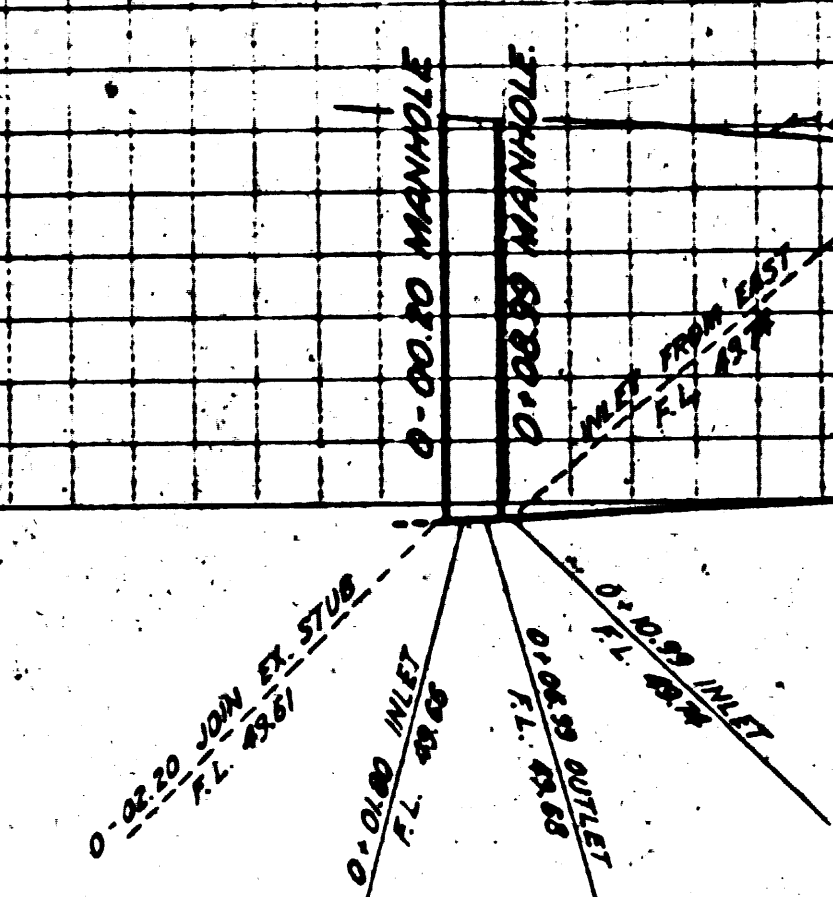
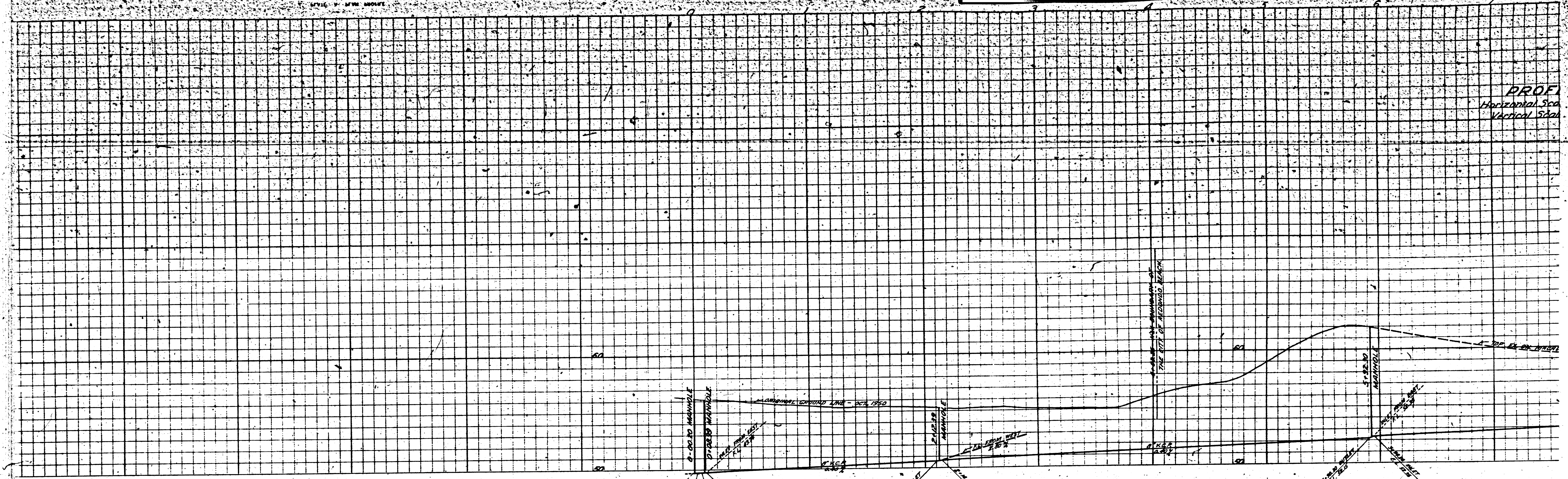


PLAN  
Scale 1" = 40'

WYDE & ASSY  
COUNTY SURVEYOR  
LOS ANGELES COUNTY

PL 164

PROF.  
Horizontal Scale  
Vertical Scale



TRACT NO. 12936  
BLK. 6  
LOT 1



CUSTOM PUMPING PLANT  
BY SOUTH BAY'S SANITATION DISTRICT  
SEE PLAN S.B. 7-38

RIGHT OF WAY  
100.00 FT

EASEMENT  
100.00 FT

LWLY BOUNDARY OF THE CITY OF TORRANCE &  
ELY BOUNDARY OF THE CITY OF REDONDO BEACH

BLK. 4  
TRACT NO. 13901  
M.B. 1911 - M.B. 1912

TRACT NO. 2650  
M.B. 1911  
16

LOT 22  
BLK. 4  
TRACT NO. 13901  
M.B. 1911 - M.B. 1912



PLAN  
Scale 1" = 40'

5281-0