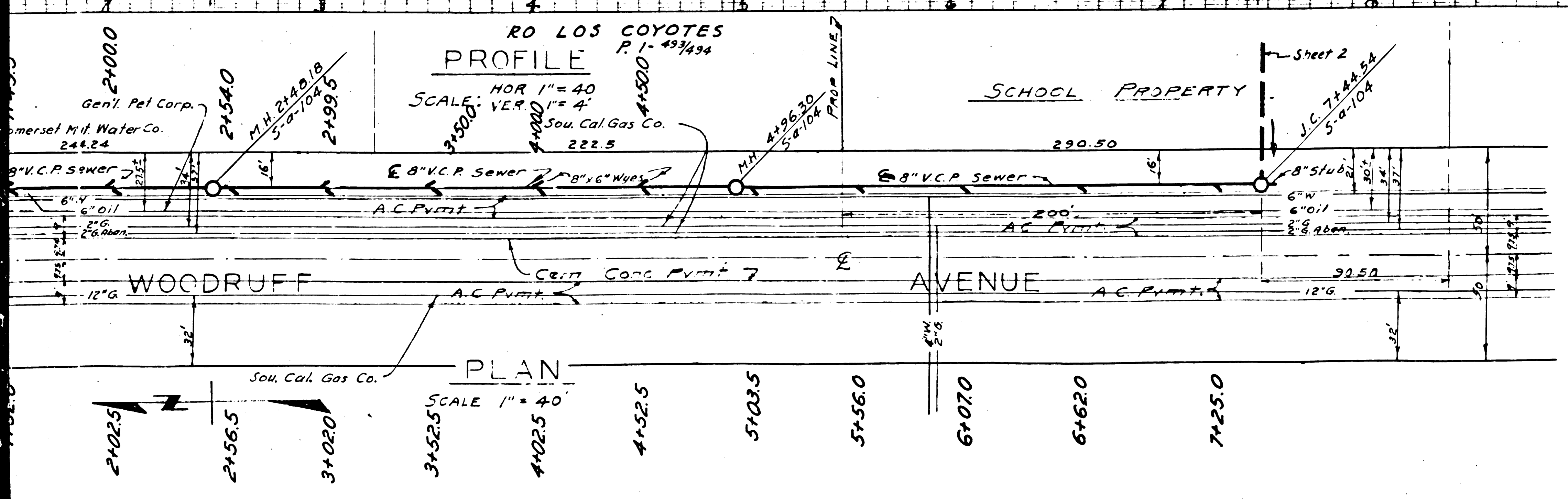
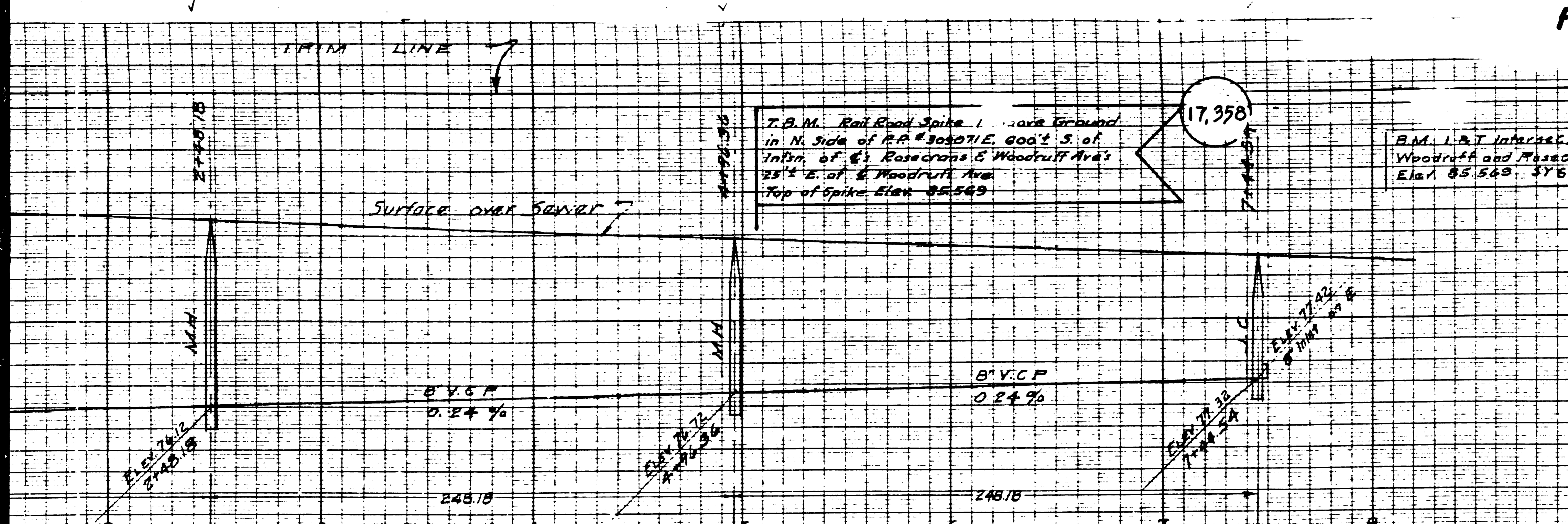


P.C. 1666 - J.N. 3769



**BELFLOWER BLDG. DIST. 4**

All connections must comply with County Sewer Ordinance No. 6130. House connection permits must be taken out before construction for all 6" and 4" lines.

Construction Division of the County Engineer's Office shall be notified 24 hours prior to start of construction. Approval of this plan applies to 8" lines.

Concrete pipe joints to be cut not less than 2" in depth with Concrete Saw, Spec. Sec. 51.

For allowable leakage test use formula No. 1, Specs. Sec. 51.

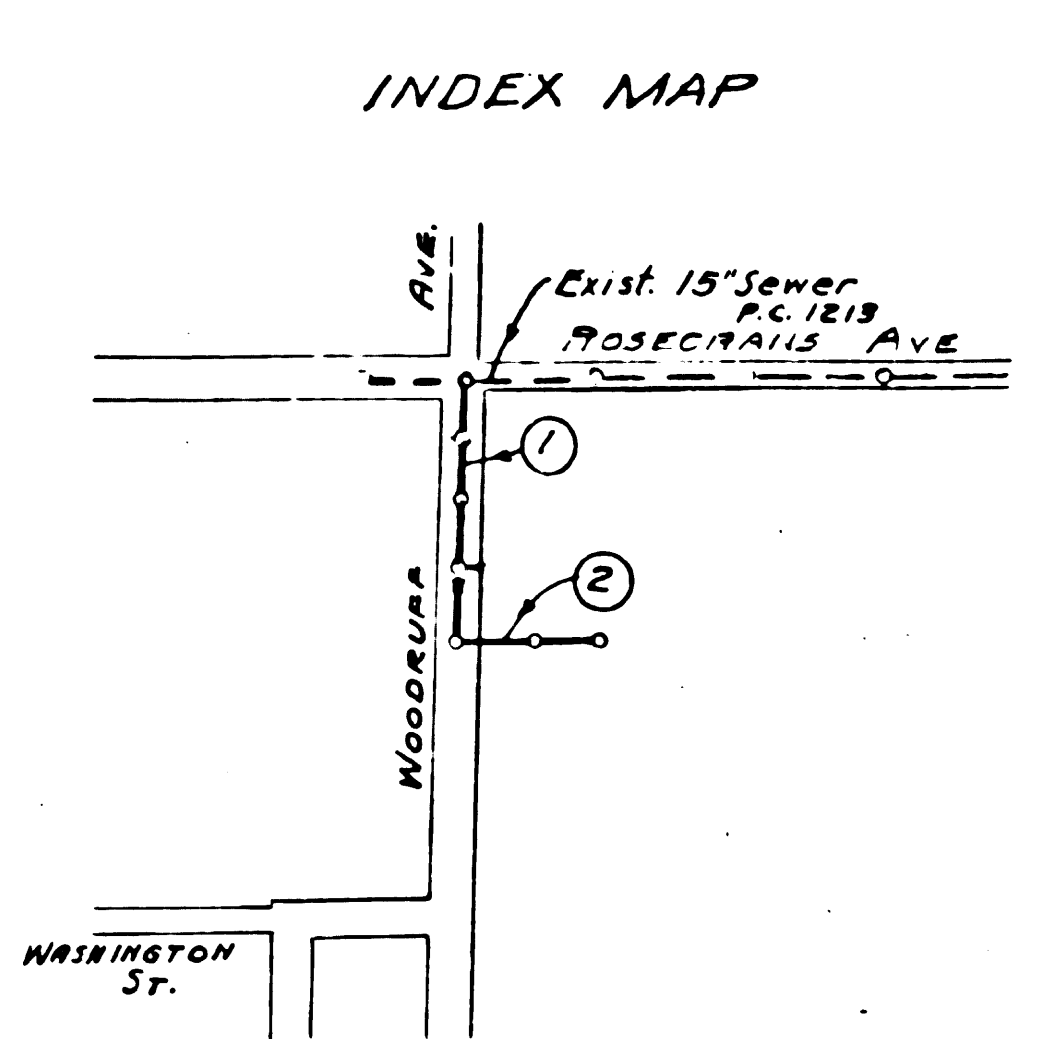
PROFILE, ALIGNMENT AND GRADE OF  
**SANITARY SEWER**  
TO BE CONSTRUCTED IN  
**WOODRUFF AVENUE**  
FOR  
**NEW PRIMARY SCHOOL**  
PROJECT NO. 40  
BELFLOWER SCHOOL DISTRICT  
BELFLOWER CALIFORNIA  
COUNTY OF LOS ANGELES  
SCALE 1" = 40'  
DATE Feb. 2, 1951  
PRIVATE CONTRACT NO. 1666  
W.S. 33  
SHEET 1 OF 2 SHEETS  
FOR LEGEND SEE PLAN NO. 2-67  
PLAN PREPARED BY  
KISTNER, CURTIS & WRIGHT  
REG. ENG. NO. 6617.

NOTE:  
1. NO REPRESENTATIVE OF THE COUNTY ENGINEER WILL SURVEY OR LAYOUT ANY PORTION OF THIS WORK.  
2. NO REVISIONS SHALL BE MADE IN THESE PLANS WITHOUT APPROVAL OF THE COUNTY ENGINEER.

1. THE STANDARD MANHOLE FRAMES AND COVERS, 30" DIA.  
2. THE STANDARD STRENGTH PIPE (SEE SPEC. AS NOTED)  
3. THE CURRENT MINIMUM FOR ALL VITRIFIED CLAY PIPE SIZES  
4. RIGHT-WAY ALL TRENCH WITHIN PAVED AREA TO MEET LOS ANGELES COUNTY ROAD DEPARTMENT OR CALIFORNIA STATE HIGHWAY REQUIREMENTS, ACCORDING TO PERMIT  
5. SQUARE FOUR FEET OF SEWER AT POINTS OF INTERFERENCE WITH RULES AS PER 2-12  
6. ALL STRUCTURES SHALL BE BRICK OR CONCRETE STRUCTURES 2'-14"

Relocate Sewer in Woodruff Av -  
Revising Approval 5/26/51  
H.L. Smiley

P.C. 1666  
J.N. 3769



APPROVED  
CHIEF DEPUTY COUNTY ENGINEER

APPROVED BY  
CHIEF ENGINEER COUNTY SANITATION DISTRICT NO. 2

CHECKED BY  
OFFICE OF THE COUNTY ENGINEER RES. CEN. 7615

STATE OF CALIFORNIA DEPARTMENT OF PUBLIC WORKS DIVISION OF HIGHWAYS APPROVED DATE 6-9-51 SIGNED [Signature]	CONTRACTOR TO VERIFY ALL DIMENSIONS AT THE JOB PROFILE, ALIGNMENT AND GRADE OF SANITARY SEWER <b>NEW PRIMARY SCHOOL NO. 2</b> SCHOOL DISTRICT BELFLOWER CALIFORNIA KISTNER, CURTIS & WRIGHT ARCHITECTS AND ENGINEERS LOS ANGELES CALIF. SAN DIEGO CALIF.	DATE 6-1-51 BY R.C. CHECKED BY D.H. SHEET NO. ADDRESS SHEET MIA # MEETS JOB NO. 64617
--	--	---

