

BY MEANS OF THE  
 MOUNTING BOARD  
 NO. 1003-10-11-12-50  
 AND 2140750

MEAN JUNK  
 REFLECT & COVER 60

BY MEANS OF THE  
 MOUNTING BOARD  
 NO. 1003-10-11-12-50  
 AND 2140750

BY MEANS OF THE  
 MOUNTING BOARD  
 NO. 1003-10-11-12-50  
 AND 2140750

(13071)

- 1. USE STANDARD MANHOLE FRAMES AND COVERS 24" IN DIAMETER.
- 2. USE STANDARD MANHOLE FRAMES AND COVERS 30" IN DIAMETER.
- 3. USE STANDARD MANHOLE FRAMES AND COVERS 42" IN DIAMETER.
- 4. USE STANDARD MANHOLE FRAMES AND COVERS 48" IN DIAMETER.
- 5. USE STANDARD MANHOLE FRAMES AND COVERS 60" IN DIAMETER.
- 6. USE STANDARD MANHOLE FRAMES AND COVERS 72" IN DIAMETER.
- 7. USE STANDARD MANHOLE FRAMES AND COVERS 84" IN DIAMETER.
- 8. USE STANDARD MANHOLE FRAMES AND COVERS 96" IN DIAMETER.
- 9. USE STANDARD MANHOLE FRAMES AND COVERS 108" IN DIAMETER.
- 10. USE STANDARD MANHOLE FRAMES AND COVERS 120" IN DIAMETER.
- 11. USE STANDARD MANHOLE FRAMES AND COVERS 144" IN DIAMETER.
- 12. USE STANDARD MANHOLE FRAMES AND COVERS 168" IN DIAMETER.
- 13. USE STANDARD MANHOLE FRAMES AND COVERS 192" IN DIAMETER.
- 14. USE STANDARD MANHOLE FRAMES AND COVERS 216" IN DIAMETER.
- 15. USE STANDARD MANHOLE FRAMES AND COVERS 240" IN DIAMETER.
- 16. USE STANDARD MANHOLE FRAMES AND COVERS 264" IN DIAMETER.
- 17. USE STANDARD MANHOLE FRAMES AND COVERS 288" IN DIAMETER.
- 18. USE STANDARD MANHOLE FRAMES AND COVERS 312" IN DIAMETER.
- 19. USE STANDARD MANHOLE FRAMES AND COVERS 336" IN DIAMETER.
- 20. USE STANDARD MANHOLE FRAMES AND COVERS 360" IN DIAMETER.

PROFILE ALIGNMENT AND GRADE OF  
 SANITARY SEWERS  
 TO BE CONSTRUCTED IN  
**MENTZ AVENUE AND**  
**SANITARY SEWER RIGHT OF WAY**  
 TO A POINT 225' ELY FROM THE FIRST ALLEY OF GLENDORA AVE.

PRIVATE CONTRACT NO. 1667  
 W.S. 38  
 SHEET 1 OF 1 SHEETS

SCALE: VERT. 1" = 4'  
 HORIZ. 1" = 40'

PREPARED IN THE OFFICES OF  
**CARMAN AND PACK**

*J. Friedrich Paul*  
 R.E. No. 7498

**FOR LEGEND**

1. SEE SPECIFICATIONS FOR ALL MATERIALS TO BE USED IN THIS PROJECT.

2. SEE SPECIFICATIONS FOR ALL MATERIALS TO BE USED IN THIS PROJECT.

3. SEE SPECIFICATIONS FOR ALL MATERIALS TO BE USED IN THIS PROJECT.

4. SEE SPECIFICATIONS FOR ALL MATERIALS TO BE USED IN THIS PROJECT.

5. SEE SPECIFICATIONS FOR ALL MATERIALS TO BE USED IN THIS PROJECT.

6. SEE SPECIFICATIONS FOR ALL MATERIALS TO BE USED IN THIS PROJECT.

7. SEE SPECIFICATIONS FOR ALL MATERIALS TO BE USED IN THIS PROJECT.

8. SEE SPECIFICATIONS FOR ALL MATERIALS TO BE USED IN THIS PROJECT.

9. SEE SPECIFICATIONS FOR ALL MATERIALS TO BE USED IN THIS PROJECT.

10. SEE SPECIFICATIONS FOR ALL MATERIALS TO BE USED IN THIS PROJECT.

11. SEE SPECIFICATIONS FOR ALL MATERIALS TO BE USED IN THIS PROJECT.

12. SEE SPECIFICATIONS FOR ALL MATERIALS TO BE USED IN THIS PROJECT.

13. SEE SPECIFICATIONS FOR ALL MATERIALS TO BE USED IN THIS PROJECT.

14. SEE SPECIFICATIONS FOR ALL MATERIALS TO BE USED IN THIS PROJECT.

15. SEE SPECIFICATIONS FOR ALL MATERIALS TO BE USED IN THIS PROJECT.

16. SEE SPECIFICATIONS FOR ALL MATERIALS TO BE USED IN THIS PROJECT.

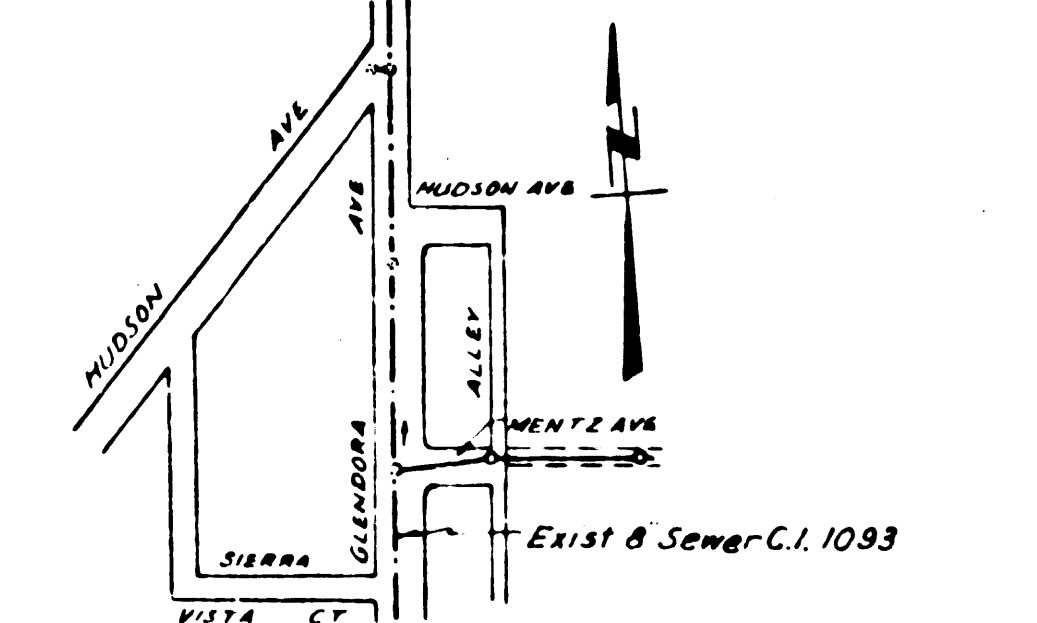
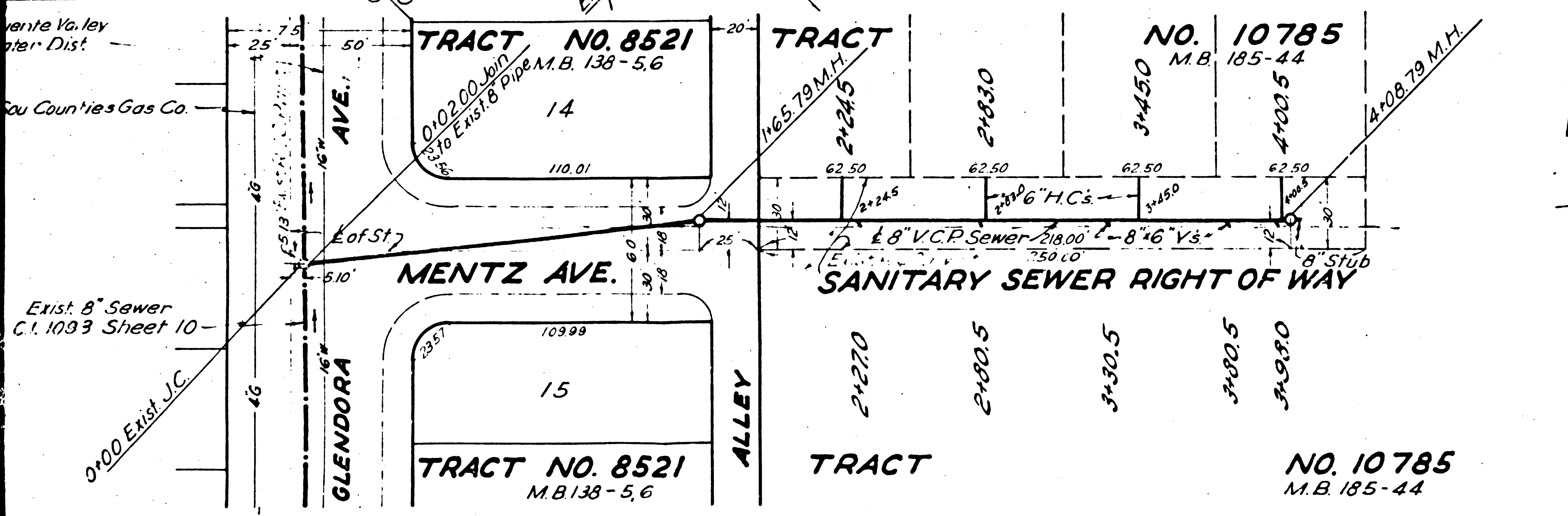
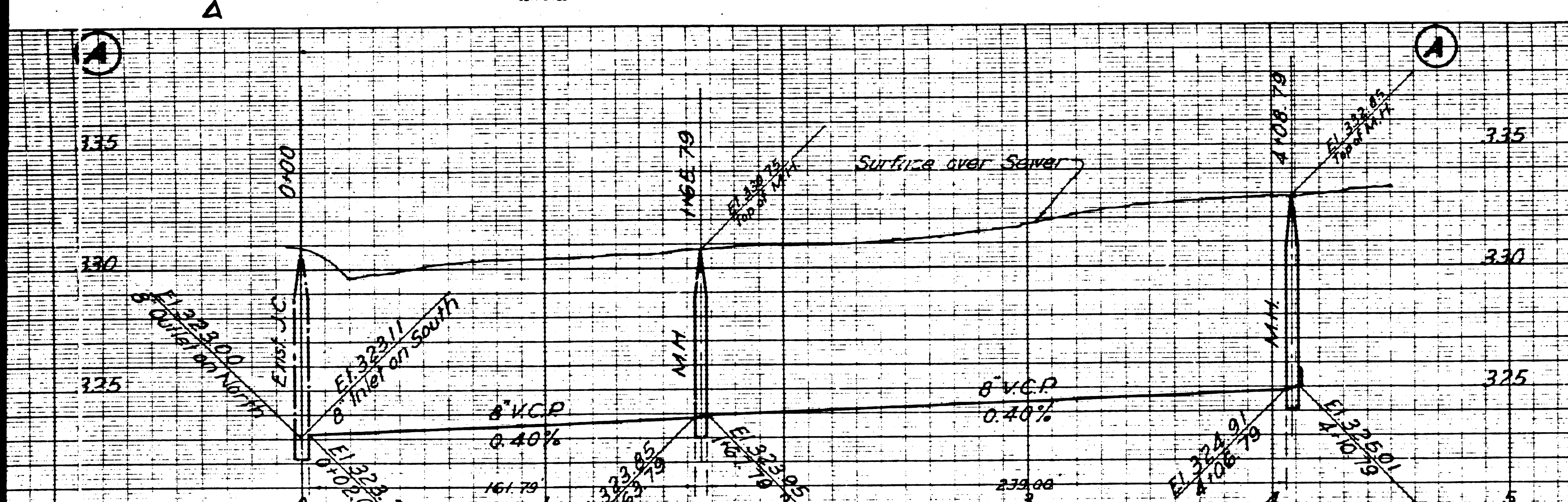
17. SEE SPECIFICATIONS FOR ALL MATERIALS TO BE USED IN THIS PROJECT.

18. SEE SPECIFICATIONS FOR ALL MATERIALS TO BE USED IN THIS PROJECT.

19. SEE SPECIFICATIONS FOR ALL MATERIALS TO BE USED IN THIS PROJECT.

20. SEE SPECIFICATIONS FOR ALL MATERIALS TO BE USED IN THIS PROJECT.

NOTE: Slopers to be installed with joint compound by manufacturer of his plant Specs. Sec. 33.48.  
 Concrete Pavement to be cut not less than 2" in depth with Concrete Saw Specs. Sec. 65.



INDEX MAP  
 SCALE 1" = 400'  
 PC 1667 JUN 31/50

FEB. 1951

