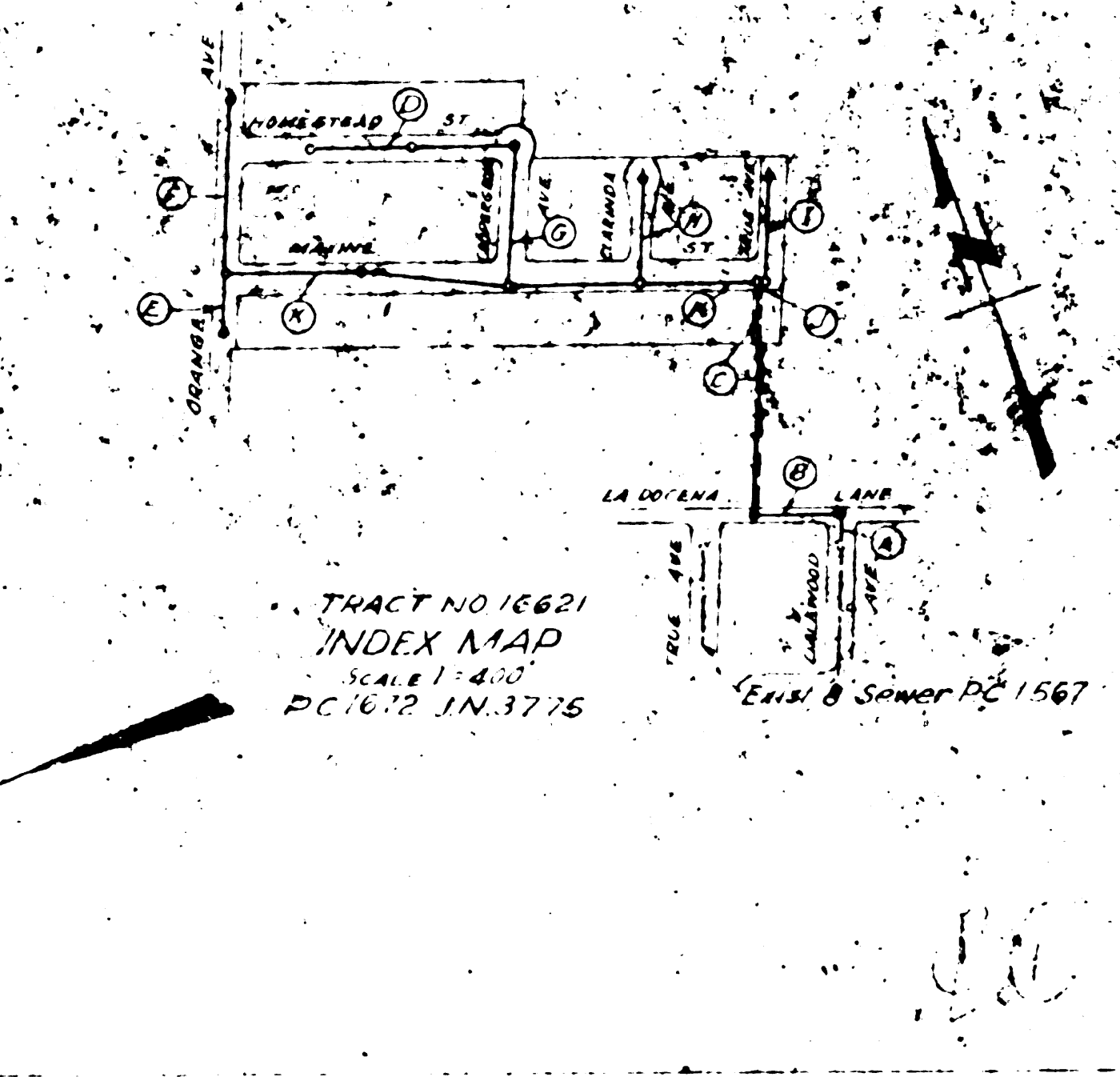
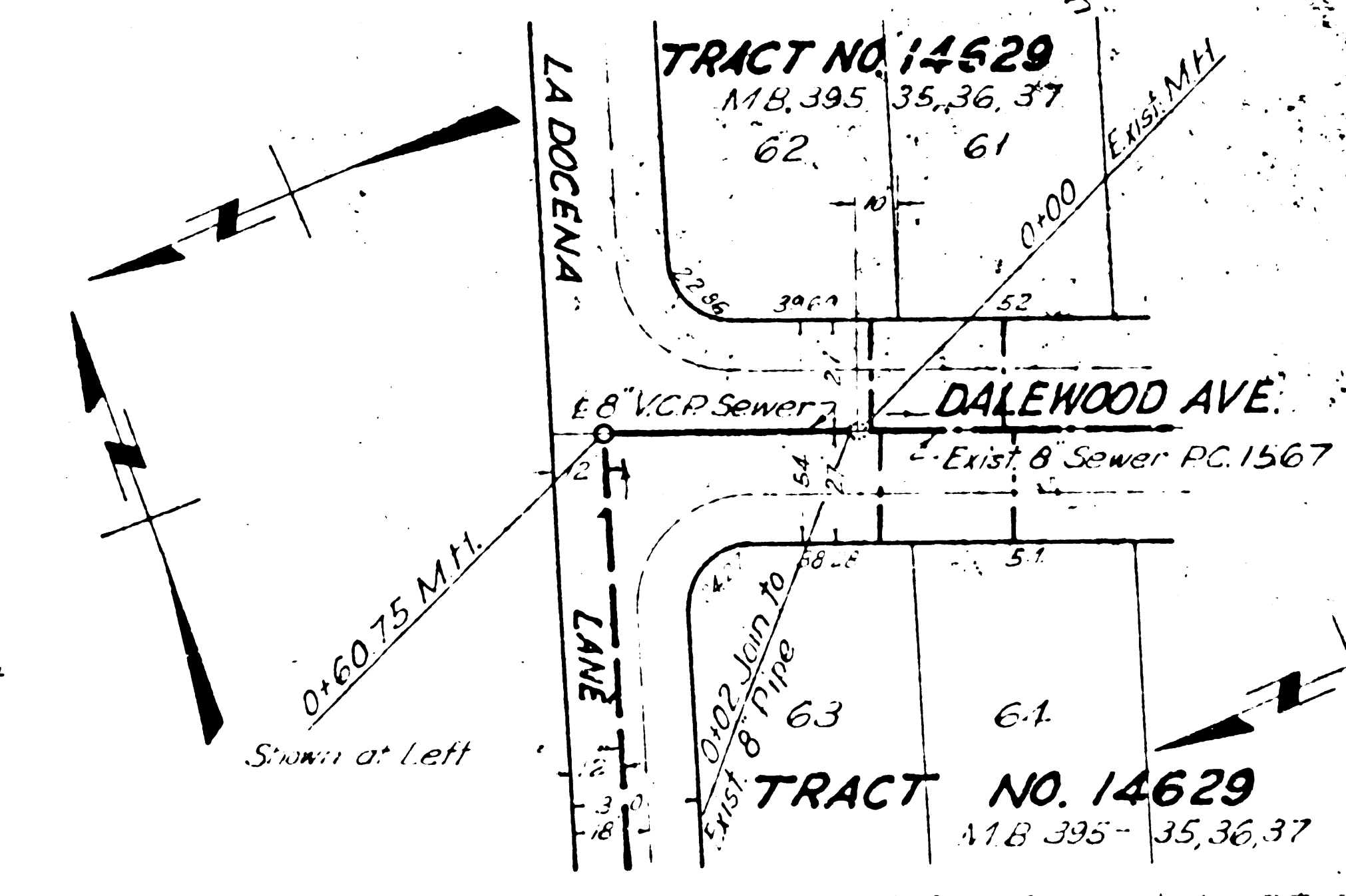
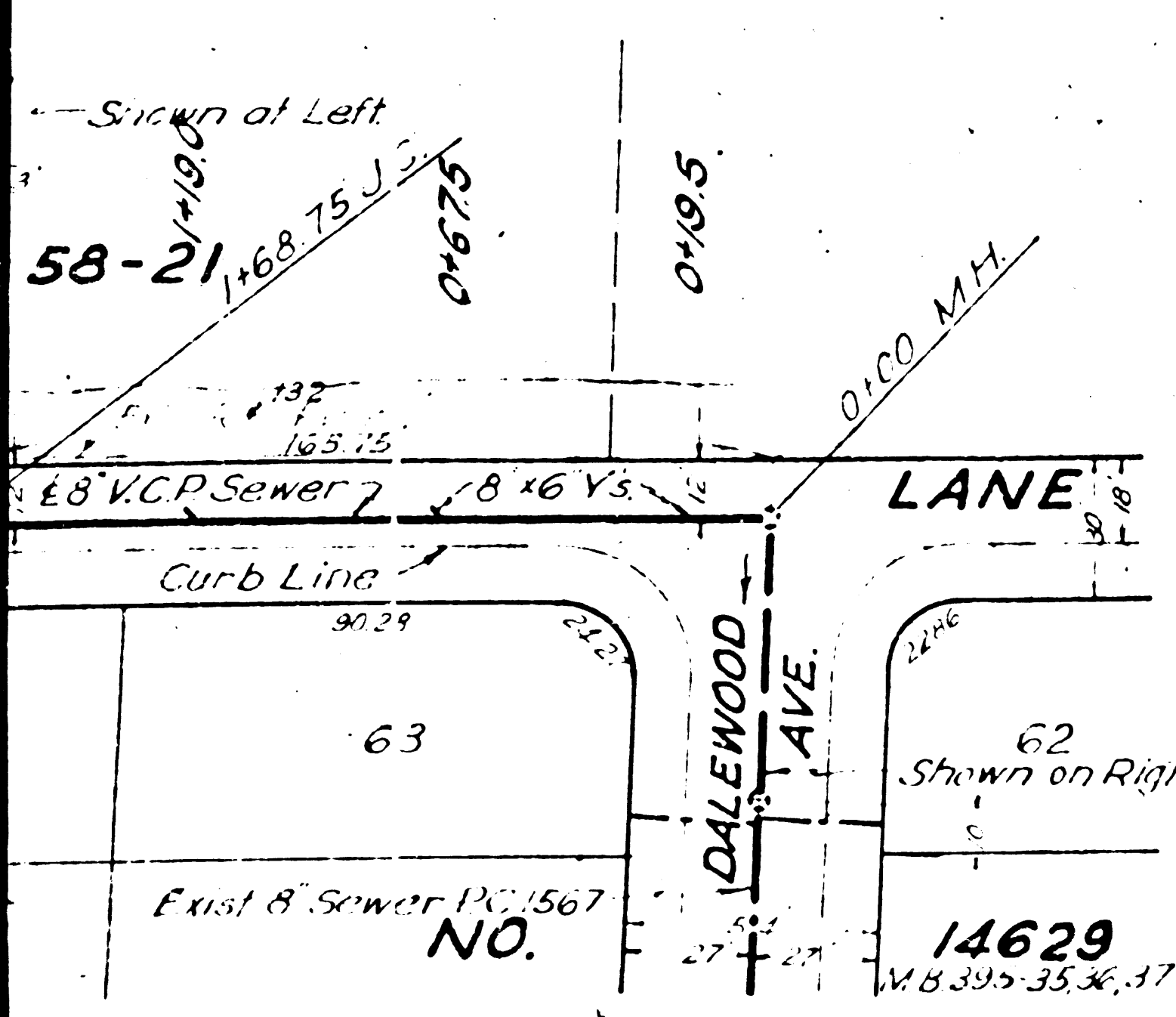


B.M. 1007.14 571602.7 41 IN. I.O.S.  
edge curb of house 2045 56-11-11  
positioned 105' N. of Shade Lane

1. This sewer line is to be installed with 8 VCP pipe and 18" diameter manholes. The manholes shall be installed with 18" diameter concrete bases and 18" diameter concrete slabs. The manholes shall be installed with 18" diameter concrete bases and 18" diameter concrete slabs. The manholes shall be installed with 18" diameter concrete bases and 18" diameter concrete slabs.

2. The sewer line shall be installed with 8 VCP pipe and 18" diameter manholes. The manholes shall be installed with 18" diameter concrete bases and 18" diameter concrete slabs. The manholes shall be installed with 18" diameter concrete bases and 18" diameter concrete slabs.

3. The sewer line shall be installed with 8 VCP pipe and 18" diameter manholes. The manholes shall be installed with 18" diameter concrete bases and 18" diameter concrete slabs. The manholes shall be installed with 18" diameter concrete bases and 18" diameter concrete slabs.



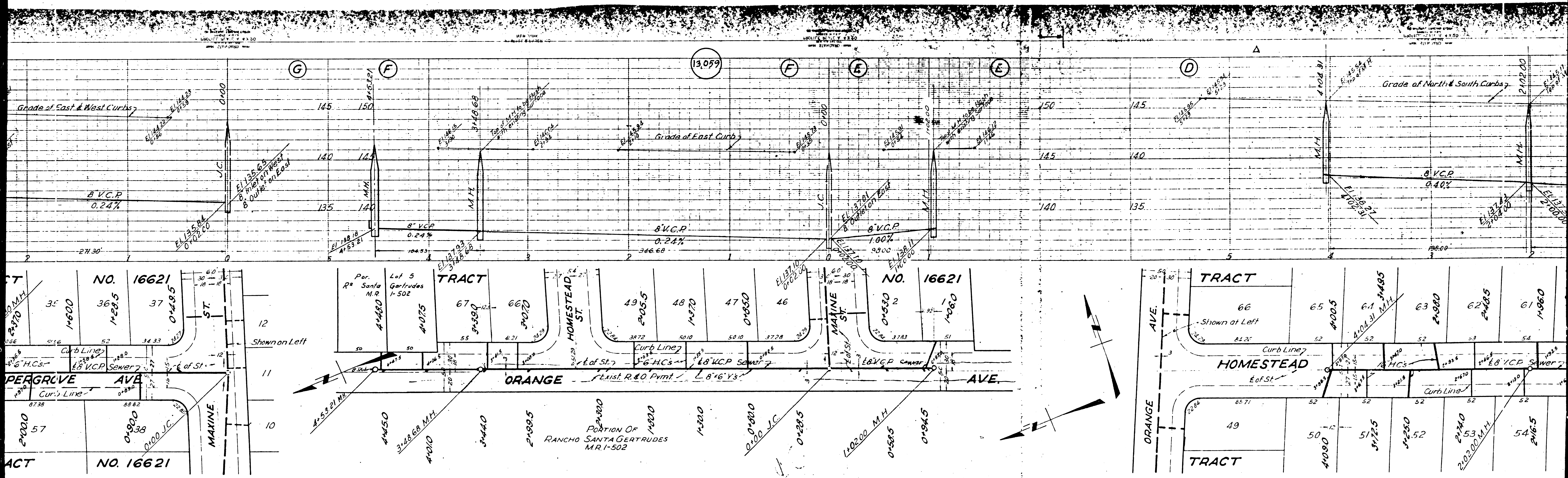
Note: Slabs to be installed with 18" diameter manholes and 18" diameter concrete bases and 18" diameter concrete slabs. The manholes shall be installed with 18" diameter concrete bases and 18" diameter concrete slabs. The manholes shall be installed with 18" diameter concrete bases and 18" diameter concrete slabs.

COUNTY OF LOS ANGELES, CALIFORNIA

*[Signature]*

TRIM KING





Scale: 1" = 100'

Scale: 1" = 100'

Scale: 1" = 100'

(G)

(F)

(13059)

(F)

(E)

(E)

(D)

△

