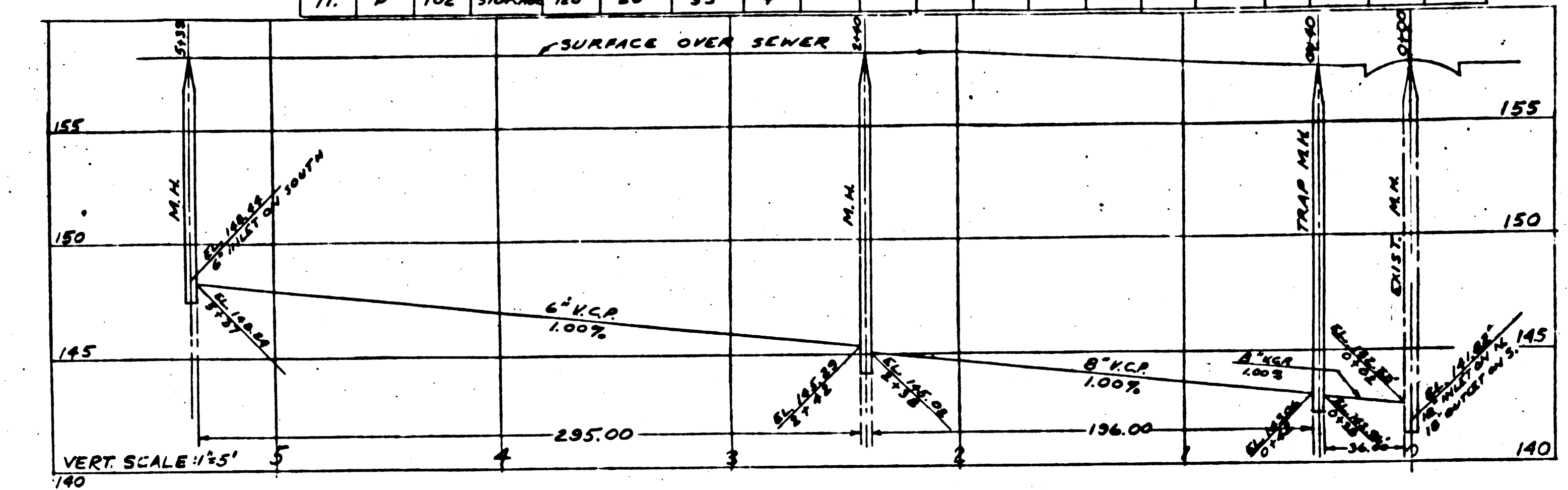
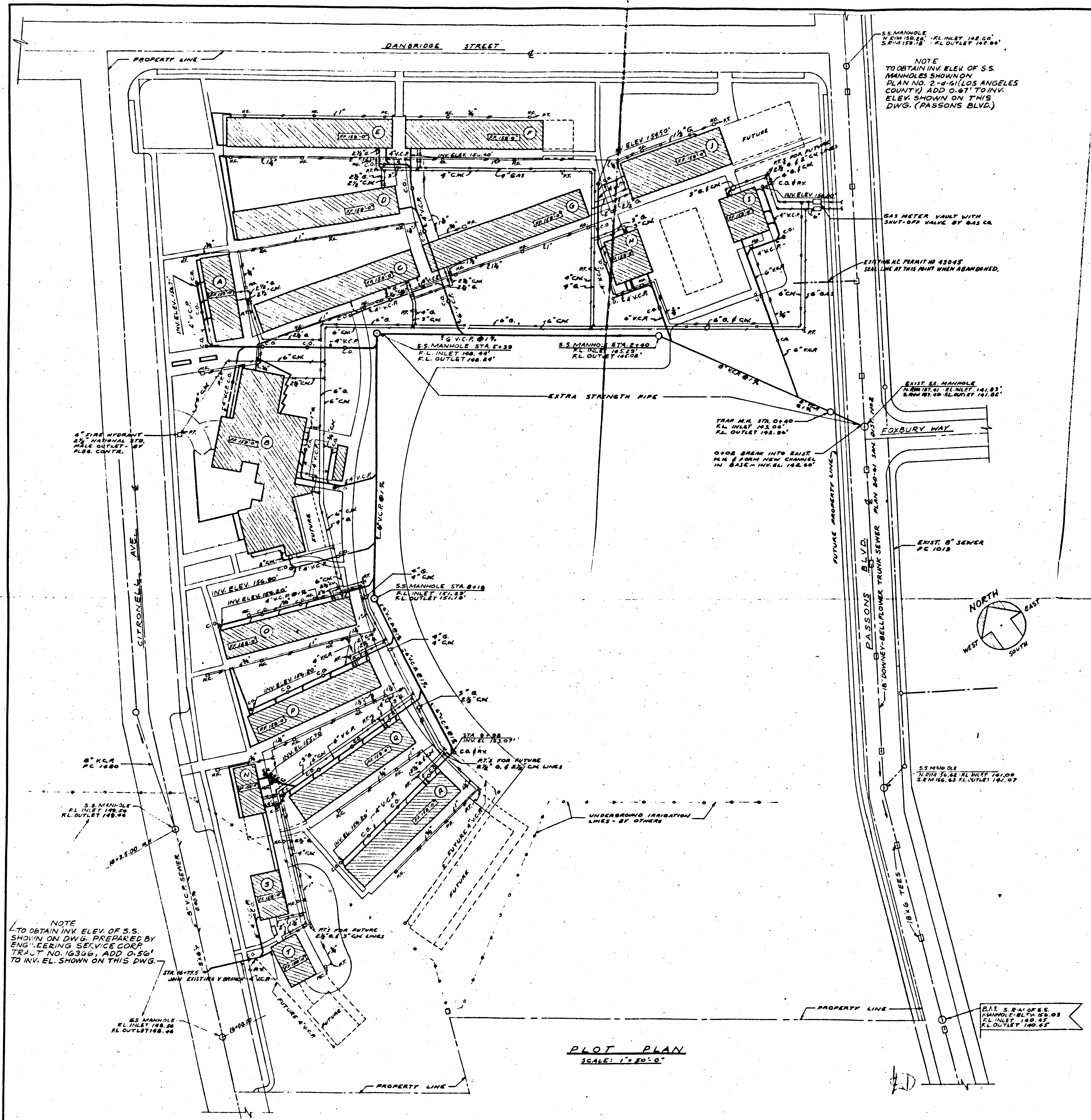


PC 1683

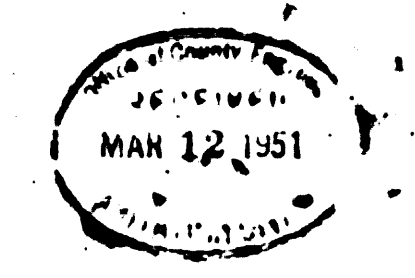


NOTE: SEWER LINES ARE TO BE 18" DIA. UNLESS OTHERWISE NOTED. ALL SEWER LINES SHALL BE 100% COVERED. THE CONTRACTOR SHALL BE RESPONSIBLE FOR OBTAINING ALL NECESSARY PERMITS FROM THE CITY AND COUNTY ENGINEERS. THE CONTRACTOR SHALL BE RESPONSIBLE FOR OBTAINING ALL NECESSARY PERMITS FROM THE CITY AND COUNTY ENGINEERS. THE CONTRACTOR SHALL BE RESPONSIBLE FOR OBTAINING ALL NECESSARY PERMITS FROM THE CITY AND COUNTY ENGINEERS.

NO SEWER SHALL BE MADE IN THIS PLAIN WITHOUT APPROVAL OF THE COUNTY ENGINEER.

1. USE STANDARD MANHOLE FRAMES AND COVERS 60-100.  
 2. USE STANDARD STURDITE PIPE 12" DIA. UNLESS OTHERWISE NOTED.  
 3. USE STANDARD STURDITE PIPE 12" DIA. UNLESS OTHERWISE NOTED.  
 4. ALL SEWER LINES SHALL BE 100% COVERED.  
 5. ALL SEWER LINES SHALL BE 100% COVERED.  
 6. ALL SEWER LINES SHALL BE 100% COVERED.

All connections must comply with County Sewer Ordinance No. 1396. House Connection Permits must be taken out before construction for all 6" and 8" lines. Construction Division of the County Engineer's Office shall be notified 24 hours before to start of construction. Approval of this plan applies only to 6" (or 8") lines. Shippers to be installed with joint compound by manufacturer at his plant. Spec's. Sec. 3.48. Concrete pavements to be cut not less than 2" in depth with Concrete Saw Spec's. Sec. 65.



COUNTY OF LOS ANGELES, CALIFORNIA  
 PRIVATE CONTRACT NO. 1683  
 JOB NUMBER 3787  
 FOR THE CONSTRUCTION OF SANITARY SEWERS  
 RIVERA SCHOOL  
 SCALE 1"=50' FEB 1951  
 PLANS PREPARED BY W. S. 36  
 APPROVED BY [Signature] REG. ENGR. NO. 21123  
 COUNTY ENGINEER  
 APPROVED BY [Signature] OFFICE ENGINEER  
 CHIEF ENGINEER COUNTY SANITATION DISTRICT NO. 18  
 CHECKED BY [Signature] DATE 2-5-51  
 OFFICE OF THE COUNTY ENGINEER REG. C.E. NO. 6212

ELEMENTARY AND INTERMEDIATE SCHOOL  
 RIVERA SCHOOL DISTRICT  
 R I V E R A C A L I F O R N I A

STATE OF CALIFORNIA DEPARTMENT OF PUBLIC WORKS DIVISION OF ARCHITECTURE	H. L. GOGERTY REGISTERED ARCHITECT 218 WEST SIXTH STREET LOS ANGELES 5, CALIFORNIA	PLUMBING PLOT PLAN & PLUMBING EQUIPMENT SCHEDULE	JOB NO. 571-1 SHEET NO. M-1 OF SHEETS
APPROVED	APPROVED	DATE	DATE

PC 1683

PC 1683