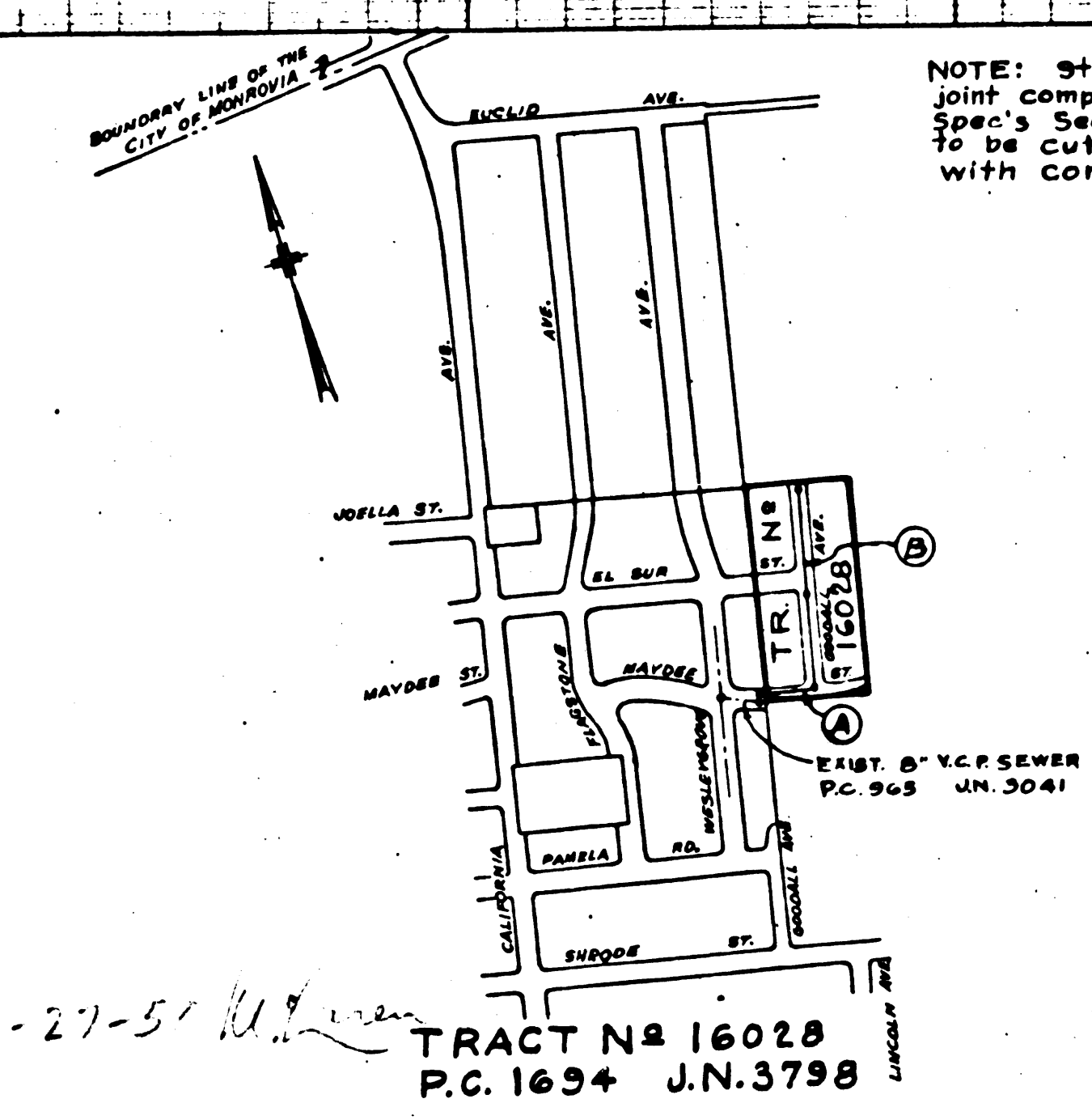
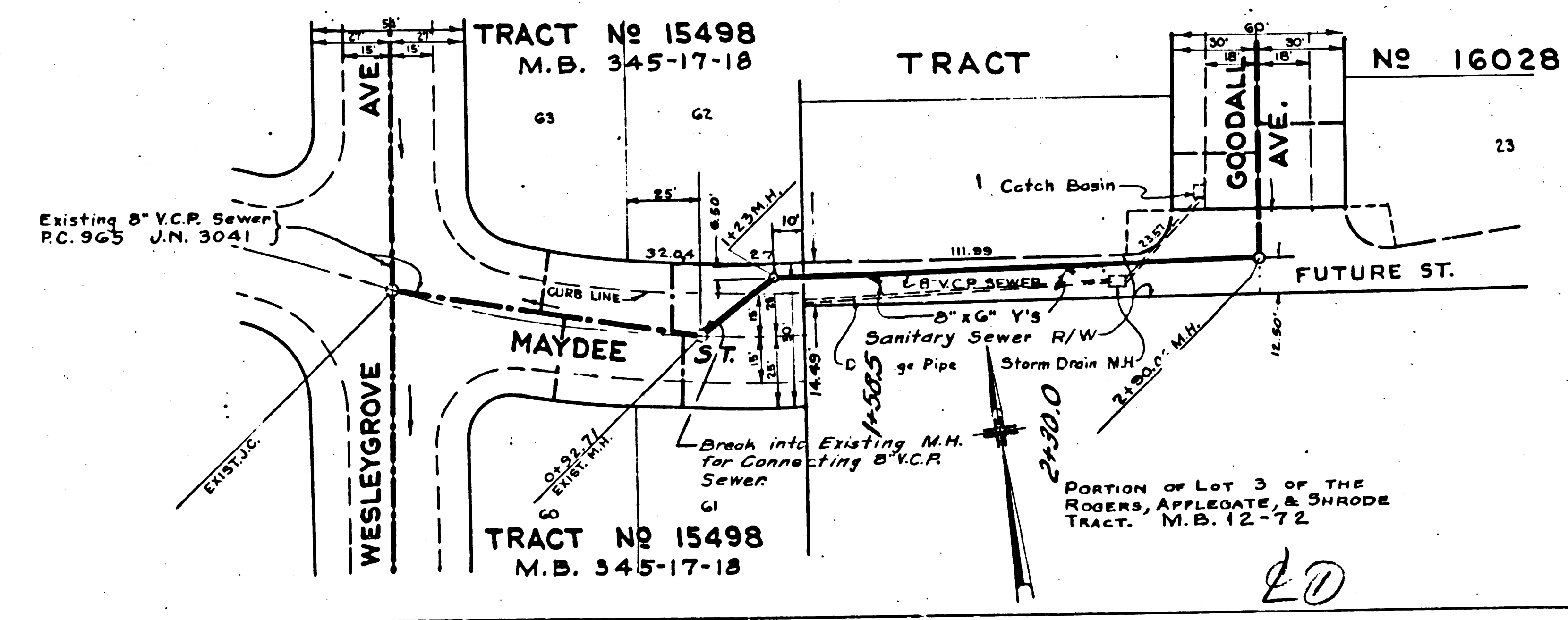
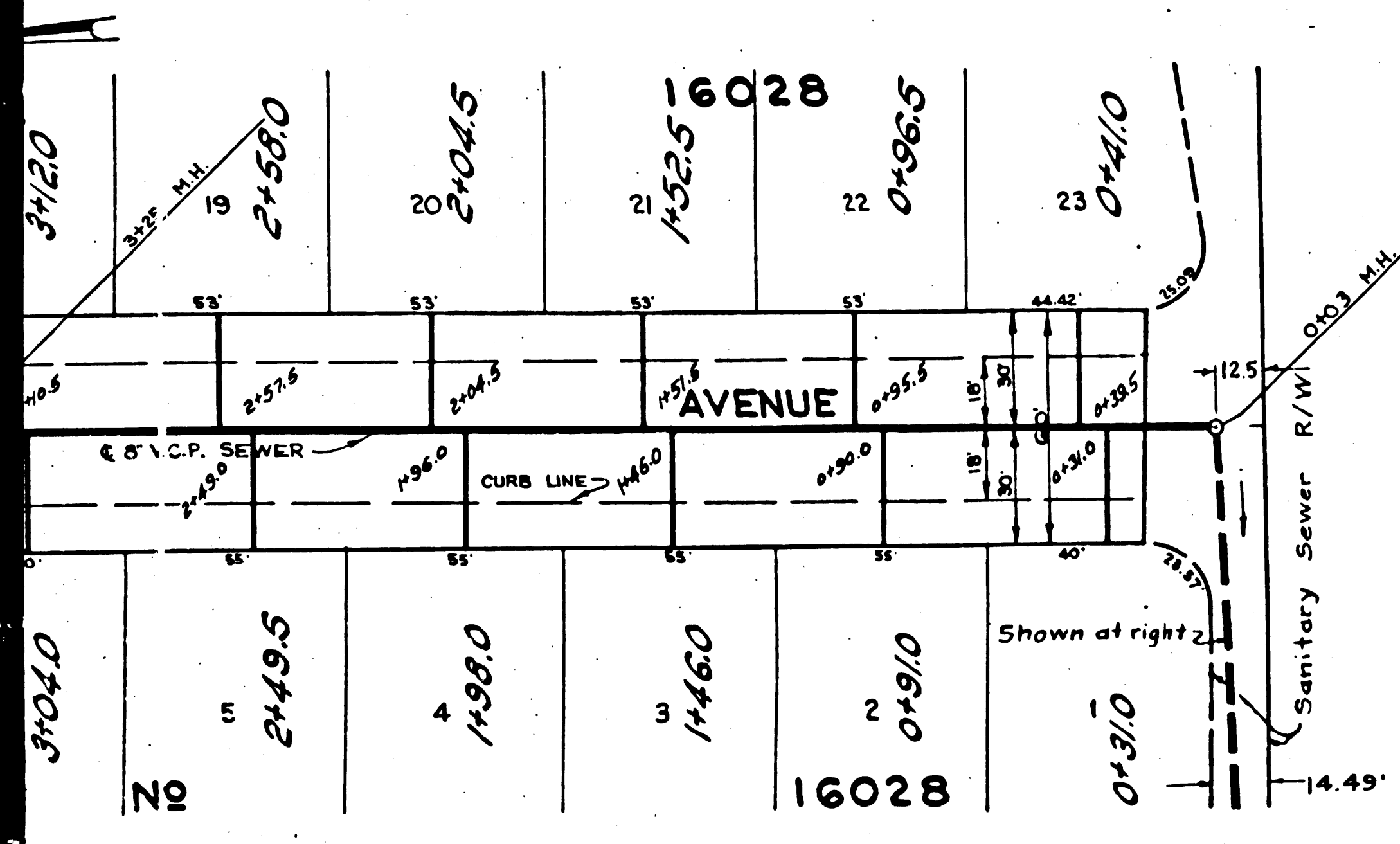


36201.10 ELEV. 334.969 L&T C
 OF CURB RETURN ON N.W. CORNER
 OF EL SUR STREET AND
 CALIFORNIA AVENUE

PROFILE ALIGNMENT AND GRADE OF
SANITARY SEWERS
 TO BE CONSTRUCTED
GOODALL AVENUE
 BETWEEN NORTH LINE OF TRACT 16028 AND MAYDEE STREET
MAYDEE STREET
 BETWEEN GOODALL AVENUE AND A POINT 1063' WEST OF THE
 PRIVATE CONTRACT NO 1694
 W.P. 48
 SHEET 1 OF 1 SHEETS

- (1) USE STANDARD MANHOLE FRAME AND COVER C-117
- (2) USE STANDARD STRENGTH PIPE EXCEPT AS NOTED
- (3) USE CEMENT MORTAR FOR ALL VITRIFIED-CLAY PIPE JOINTS
- (4) RESURFACE ALL TRENCH WITHIN OWNED AREA TO MEET LOS ANGELES COUNTY ROAD DEPARTMENT REQUIREMENTS IN ACCORDANCE WITH THE PERMIT.
- (5) CONSTRUCT HOUSE CONNECTIONS WITH INVERT AT PROPERTY LINE 5' FEET BELOW CURB GRADE
- (6) ENGAGE FOUR FEET OF SEWER AT POINTS OF INTERFERENCE WITH POLES AS PER S-C-119
- (7) ALL STRUCTURES SHALL BE BRICK SEWER STRUCTURES, EXCEPT AS NOTED

NOTE:
 NO REPRESENTATIVE OF THE COUNTY ENGINEER SHALL SURVEY OR LAY OUT ANY PORTION OF THE WORKS AUTHORIZED HEREON UNLESS HE SHALL FURNISH THE COUNTY ENGINEER WITH CERTAIN WRITTEN AND SIGNED STATEMENTS OF ALL HOUSE CONNECTIONS AND HOUSES TO BE MADE. THESE STATEMENTS SHALL BE IN WRITING AND SHALL BE SIGNED BY THE OWNER OR HIS REPRESENTATIVE. NO REVISIONS SHALL BE MADE IN THESE PLANS WITHOUT APPROVAL OF THE COUNTY ENGINEER.

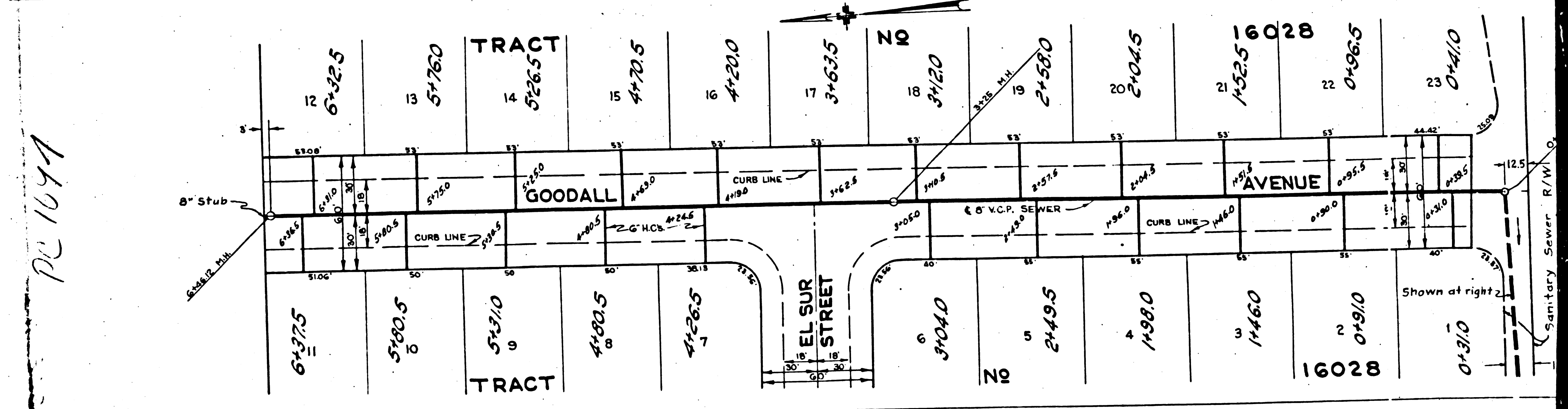
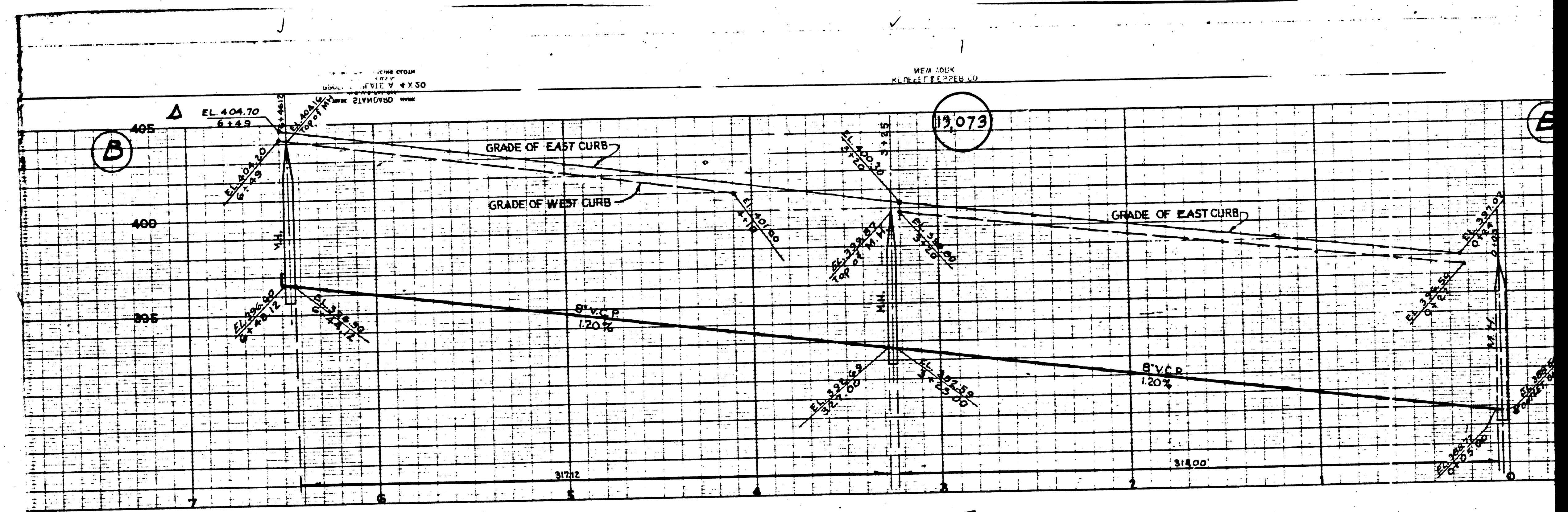


NOTE: Stoppers to be installed with joint compound by manufacture of plant Spec's 540-33.45. Concrete Pavement to be cut not less than 2" in depth with concrete saw Spec's 540-65

FOR LEGEND
 SEE PLAN NO. S-C-64
 RECEIVED
 MAY 17 1951
 COUNTY ENGINEER

NOTES:
 GRADES TO WHICH THIS IMPROVEMENT IS TO BE CONSTRUCTED ARE SHOWN ON PLANS AND PROFILE. GRADE POINTS FOR TOP OF CURB, CENTER LINE OF STREET OR CENTER LINE OF ALLEY ARE SHOWN BY CIRCLES ON PROFILES. AT ALL POINTS BETWEEN DESIGNATED POINTS THE GRADE SHALL BE ESTABLISHED SO AS TO CONFORM TO A STRAIGHT LINE DRAWN BETWEEN SAID DESIGNATED POINTS. ELEVATIONS ARE IN FEET ABOVE U.S.S. DATUM OR MEAN SEA LEVEL. THIS DRAWING AND THE DATA HEREON ARE HEREBY MADE A PART OF THE SPECIFICATIONS.
 WORK SHALL BE CONSTRUCTED ACCORDING TO SPECIFICATIONS ON FILE IN THE OFFICE OF THE COUNTY ENGINEER AND SHALL BE INSPECTED ONLY IN THE PRESENCE OF THE COUNTY ENGINEER.
 BEFORE WORK CAN BE STARTED THE CONTRACTOR MUST OBTAIN A PERMIT TO EXCAVATE IN COUNTY STREET FROM THE L.A. COUNTY ROAD DIST. 211 SOUTH MAIN ST. AND MAKE A DEPOSIT WITH THE COUNTY ENGINEER, IN THE MANNER, LEGAL BUILDING, SUFFICIENT TO COVER THE COST OF CONSTRUCTION INSPECTION AND RECORD PLANS.
 COUNTY OF LOS ANGELES, CALIFORNIA
 APPROVED BY: *A.H. Gregory* CHIEF COUNTY ENGINEER
 APPROVED BY: *M. Rawlin* CHIEF COUNTY ENGINEER
 CHECKED BY: *Richard E. Wilson* CHIEF COUNTY ENGINEER
 TRACT NO 16028
 P.C. 1694 J.N. 3798
 APRIL 15 1951
 OFFICE OF COUNTY ENGINEER

RECEIVED
 MAY 17 1951
 COUNTY ENGINEER



E2