

B.M. #29 - Elev. 38.725
 Dolores St. & Sepulveda Blvd.
 Lead & Tack in N.E. Curb Return 1.5' So. of No. End.

- (1) USE STANDARD MANHOLE FRAME AND COVER, S-a-117, (EXCEPT AS NOTED).
- (2) USE STANDARD STRENGTH PIPE, (EXCEPT AS NOTED).
- (3) USE CEMENT MORTAR FOR ALL VITRIFIED CLAY PIPE JOINTS.
- (4) RESURFACE ALL TRENCH WITHIN PAVED AREA TO MEET LOS ANGELES COUNTY ROAD DEPT. OR CALIFORNIA STATE HIGHWAY REQUIREMENTS IN ACCORDANCE WITH PERMIT.
- (5) CONSTRUCT HOUSE CONNECTIONS WITH INVERT AT PROPERTY LINE 5 FEET BELOW CURB, (EXCEPT AS NOTED).
- (6) ENCASE FOUR FEET OF SEWER AT POINTS OF INTERFERENCE WITH POLES AS PER S-a-119.
- (7) ALL STRUCTURES SHALL BE BRICK SEWER STRUCTURES, S-a-104, (EXCEPT AS NOTED).

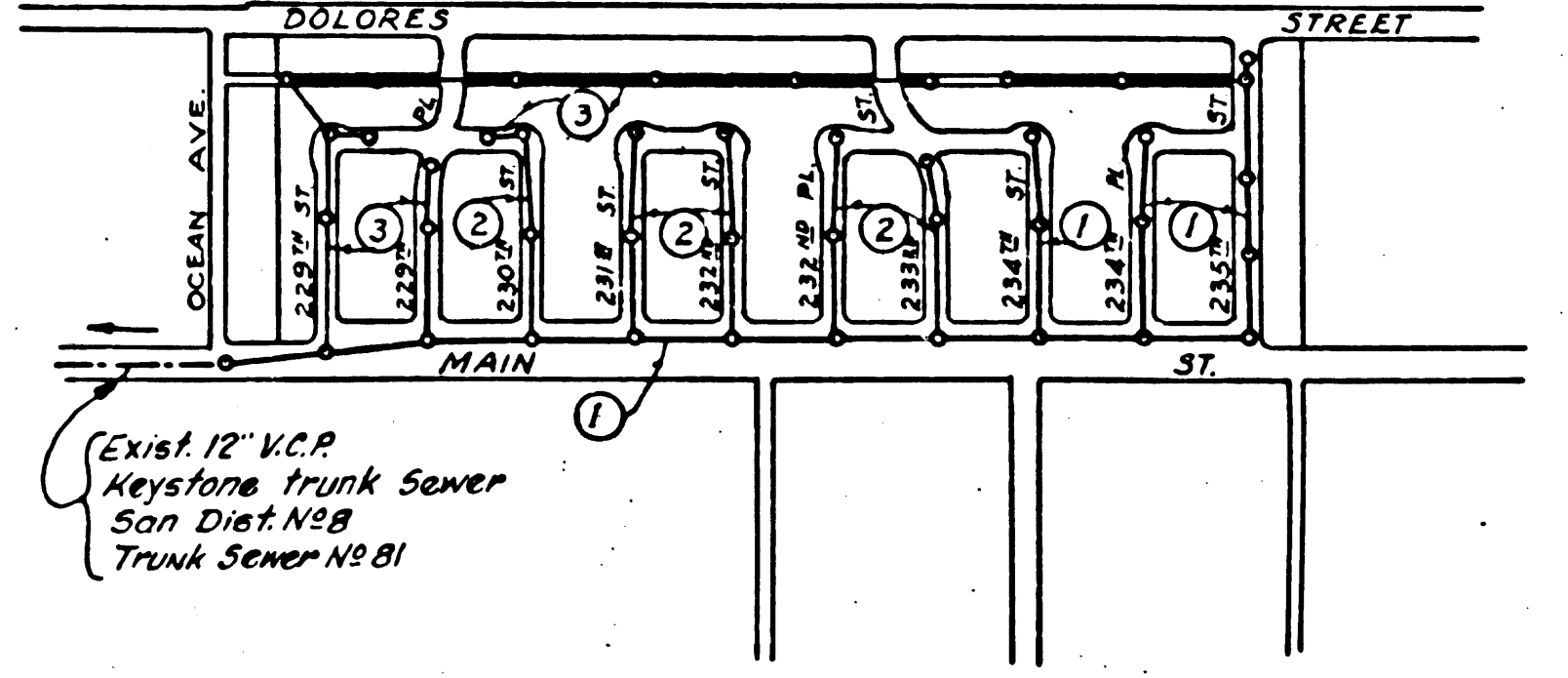
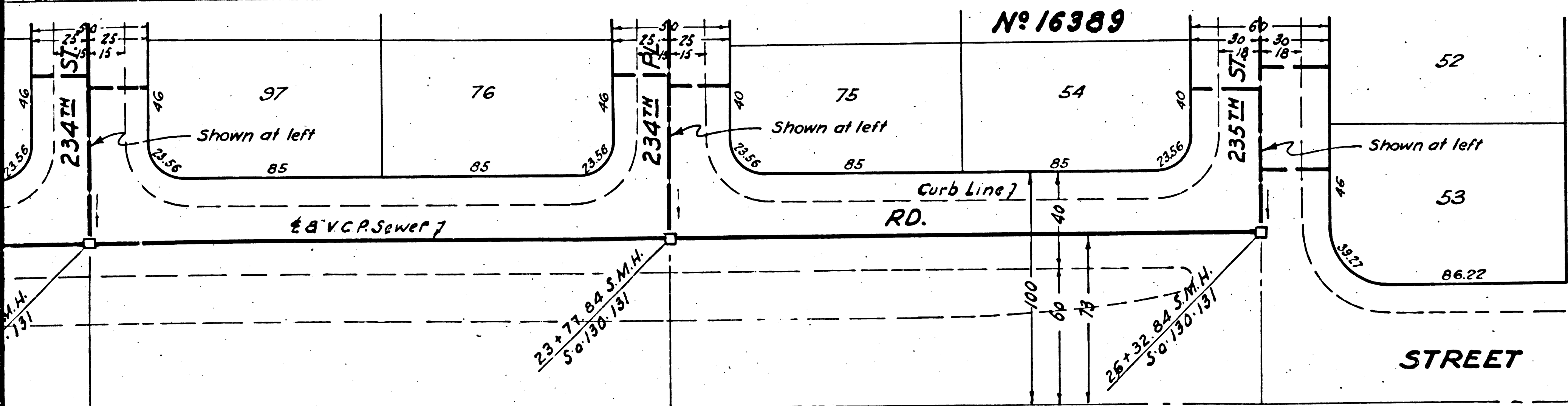
NOTE:
 NO REPRESENTATIVE OF THE COUNTY ENGINEER WILL SURVEY OR LAY OUT ANY PORTION OF THE WORK.
 THE OWNER OR HIS AUTHORIZED REPRESENTATIVE SHALL FURNISH THE COUNTY ENGINEER WITH GRADE SHEETS AND STATIONS OF ALL HOUSE CONNECTIONS AND Y BRANCHES AND SHALL PROVIDE STAKES FOR THEM AT THEIR PROPER LOCATIONS WITH STATIONING, PLAINLY MARKED. ANY CHANGE OF LOCATION SHALL BE REQUESTED IN WRITING BY THE OWNER OR HIS REPRESENTATIVE.
 NO REVISIONS SHALL BE MADE IN THESE PLANS WITHOUT APPROVAL OF THE COUNTY ENGINEER.
 PROVIDE STAKES ON THE PROPERTY LINES OR PROPERTY LINES PRODUCED AT RIGHT ANGLES TO THE SEWER LINE AT THE CENTER LINE OF EACH MANHOLE.
 SEWERS TO BE INSTALLED WITH VENT COPIEDS BY MANUFACTURER AT HIS PLANT. SPEC. SEC. 35, 38, CONCRETE PAVEMENT TO BE CUT NOT LESS THAN 8" IN DEPTH WITH CONCRETE SAW. SPEC. SEC. 66.

PROFILE, ALIGNMENT AND GRADE OF
SANITARY SEWERS
 TO BE CONSTRUCTED IN
MAIN STREET
 BETWEEN OCEAN AVE. AND 235TH ST.
234TH STREET
 BETWEEN MAIN ST. AND 234TH ST. (NORTH)
235TH STREET
 BETWEEN MAIN ST. AND 234TH PL. (SOUTH)
234TH PLACE
 BETWEEN MAIN ST. AND 234TH PL. (SOUTH)
PRIVATE CONTRACT NO. 1708
 W. S. 28
 SHEET 1 OF 3 SHEETS

PREPARED IN THE OFFICE OF
LEONARD H. GOWDY
 BY: *Leonard H. Gowdy*
 REG. C.E. #91853

FOR LEGEND
 SEE PLAN NO. 3-9-64

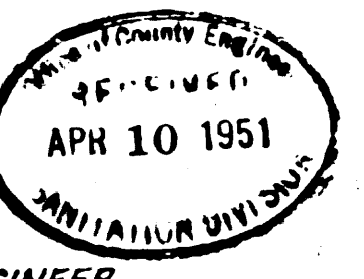
NOTE:
 GRADES TO WHICH THIS IMPROVEMENT IS TO BE CONSTRUCTED ARE SHOWN ON PLANS AND PROFILE. GRADE POINTS FOR TOP OF CURB, CENTER LINE OF STREET OR CENTER LINE OF ALLEY ARE SHOWN BY CIRCLES ON PROFILES. AT ALL POINTS BETWEEN DESIGNATED POINTS THE GRADE SHALL BE ESTABLISHED SO AS TO CONFORM TO A STRAIGHT LINE DRAWN BETWEEN SAID DESIGNATED POINTS.
 ELEVATIONS ARE IN FEET ABOVE U.S.G.S. DATUM OR MEAN SEA LEVEL.
 THIS DRAWING AND THE DATA HEREON ARE HEREBY MADE A PART OF THE SPECIFICATIONS. WORK SHALL BE CONSTRUCTED ACCORDING TO SPECIFICATIONS ON FILE IN THE OFFICE OF THE COUNTY ENGINEER AND SHALL BE PROSECUTED ONLY IN THE PRESENCE OF THE COUNTY ENGINEER. BEFORE WORK CAN BE STARTED, THE CONTRACTOR MUST OBTAIN A PERMIT TO EXCAVATE IN COUNTY STREETS FROM THE L.A. COUNTY ROAD DEPT. JOB NO. 235 STREET AND MAKE A DEPOSIT WITH THE COUNTY ENGINEER, 228 L. A. COUNTY ENGINEERING BLDG., SUFFICIENT TO COVER THE COST OF CONSTRUCTION INSPECTION AND RECORD PLANS.
 APPROVAL OF THIS PLAN BY THE COUNTY OF LOS ANGELES DOES NOT CONSTITUTE A REPRESENTATION AS TO THE ACCURACY OF THE LOCATION OF, OR THE EXISTENCE OR NON-EXISTENCE OF, ANY UNDERGROUND UTILITY, PIPE, OR STRUCTURE WITHIN THE LIMITS OF THIS PROJECT. (THIS NOTE APPLIES TO ALL SHEETS.)



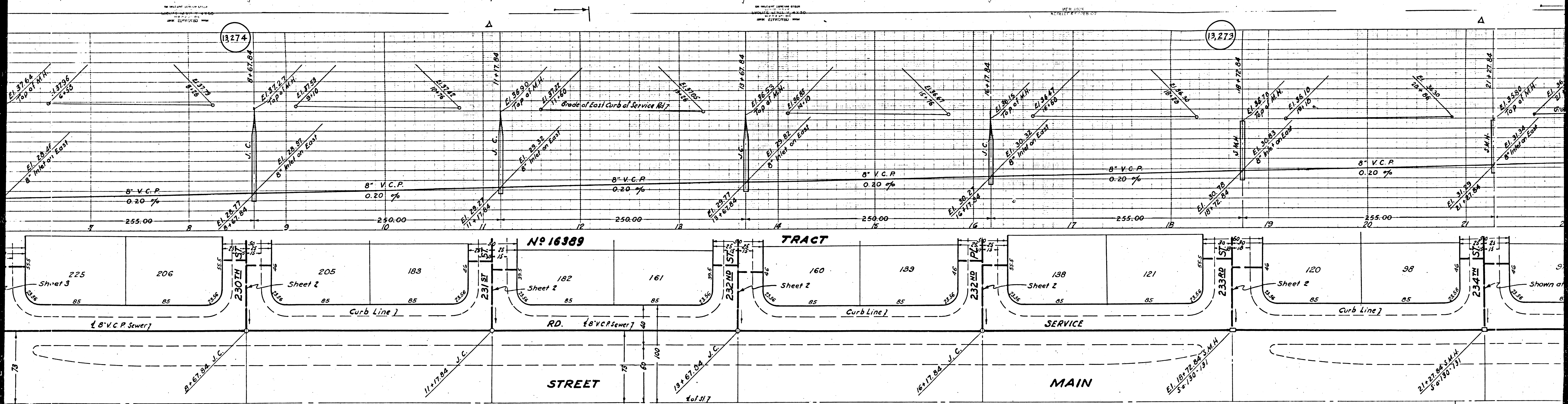
INDEX MAP
 P.C. 1708 J.N. 3814
 SCALE: 1" = 600'

COUNTY OF LOS ANGELES, CALIFORNIA.
 APPROVED: *[Signature]* COUNTY ENGINEER
 APPROVED BY: *[Signature]* OFFICE ENGINEER
 SANITATION DISTRICT NO. 8

CHECKED BY: *Richard E. Kahan*
 OFFICE OF COUNTY ENGINEER, REG. C.E. NO. 7860



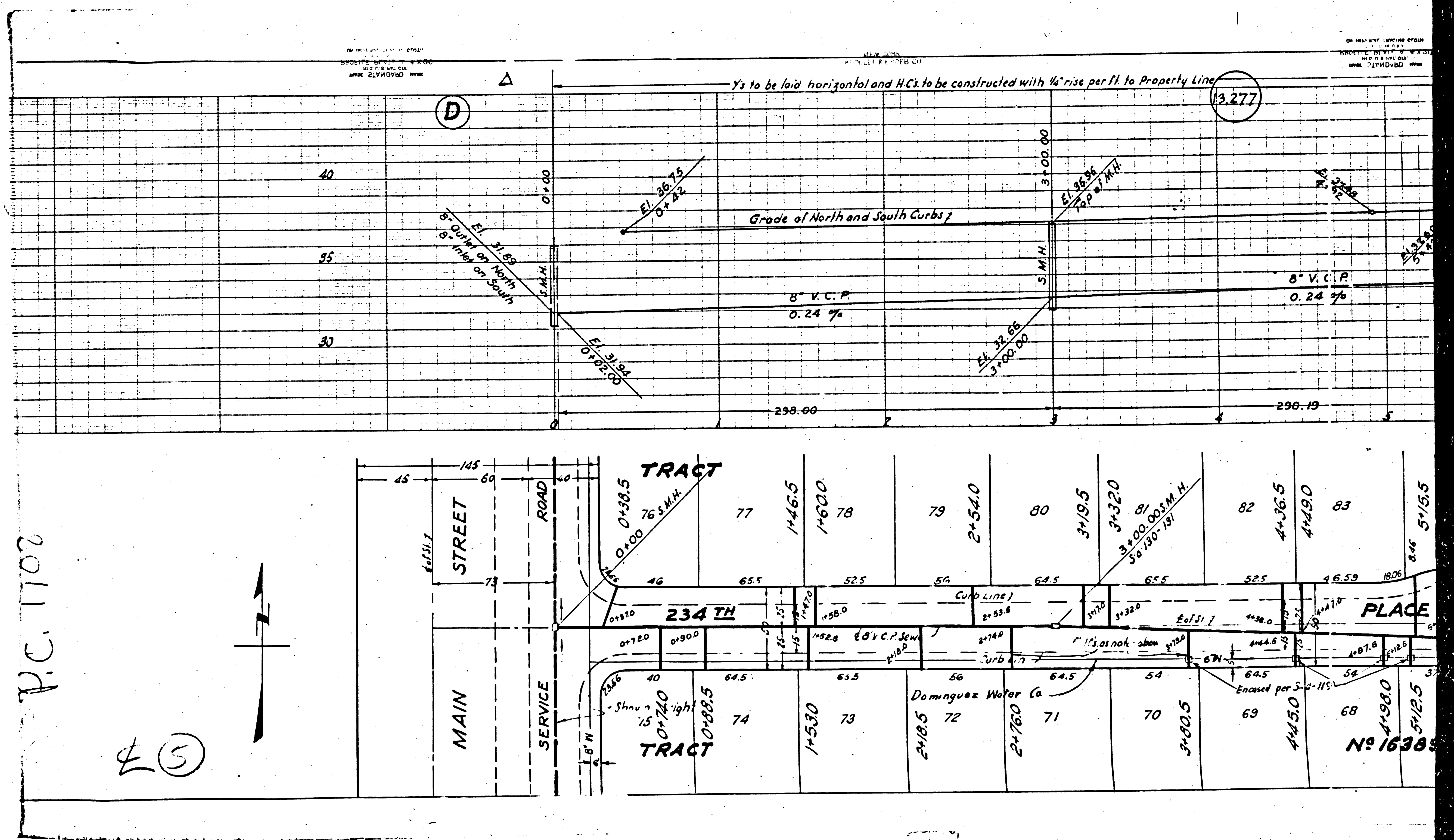
SHEET 1 OF 3 SHEETS
 SANITARY SEWER 234TH ST
 CIVIL ENGINEER
 W. S. 28 & LAY OUT NO. 16389



No. 16389 TRACT

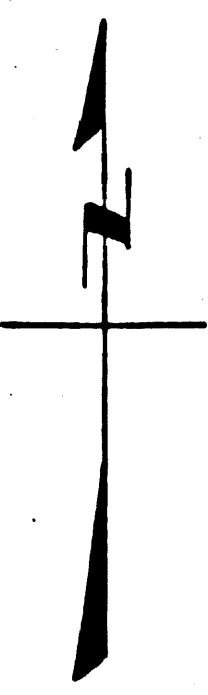
STREET MAIN

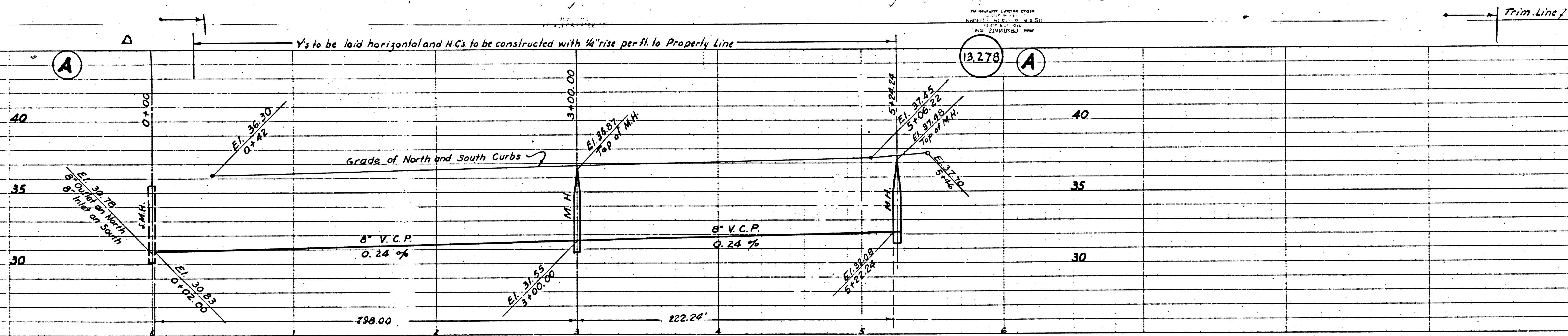
(2)



P.C. 1702

⊕ (5)





PLAN PROFILE AND GRADE OF **2**

SANITARY SEWERS

TO BE CONSTRUCTED IN

233RD STREET

BETWEEN MAIN ST. AND 234TH ST. (SOUTH)

232ND PLACE

BETWEEN MAIN ST. AND 232ND PL. (SOUTH)

231ST STREET

BETWEEN MAIN ST. AND 232ND ST. (NORTH)

230TH STREET

BETWEEN MAIN ST. AND 231ST ST. (SOUTH)

BETWEEN MAIN ST. AND 230TH ST. (NORTH)

PRIVATE CONTRACT NO 1708

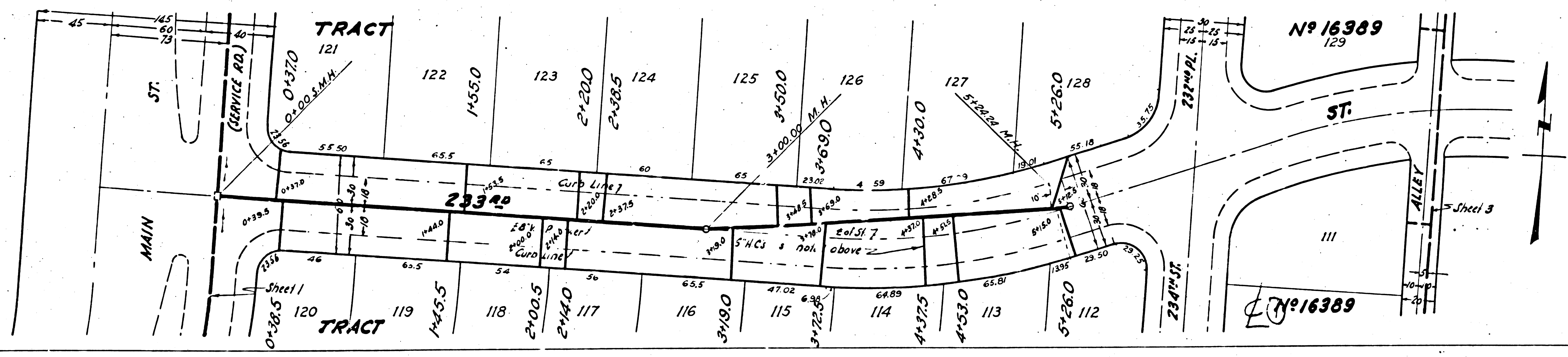
M.S. 28 MARCH 1951

SHEET 2 OF 3 SHEETS

PREPARED IN THE OFFICE OF

LEONARD H. GOWDY

BY Leonard H. Gowdy REG. C.E. NO. 4813



FOR LEGEND SEE PLAN N^o 3064

FOR CONSTRUCTION NOTES SEE SHEET 1

COUNTY OF LOS ANGELES CALIFORNIA

APPROVED BY [Signature] COUNTY ENGINEER

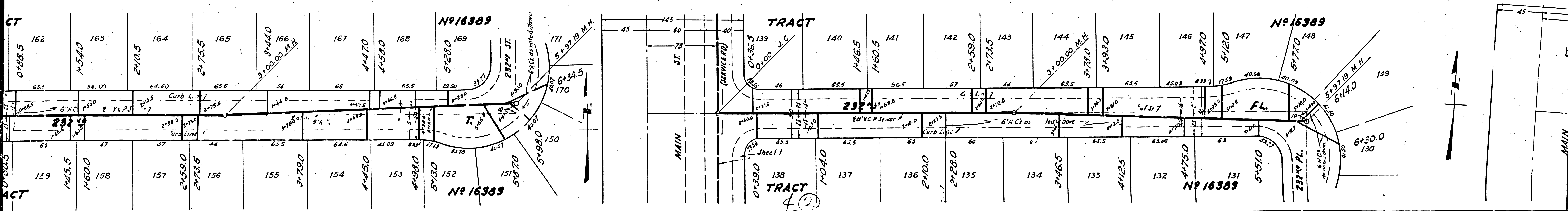
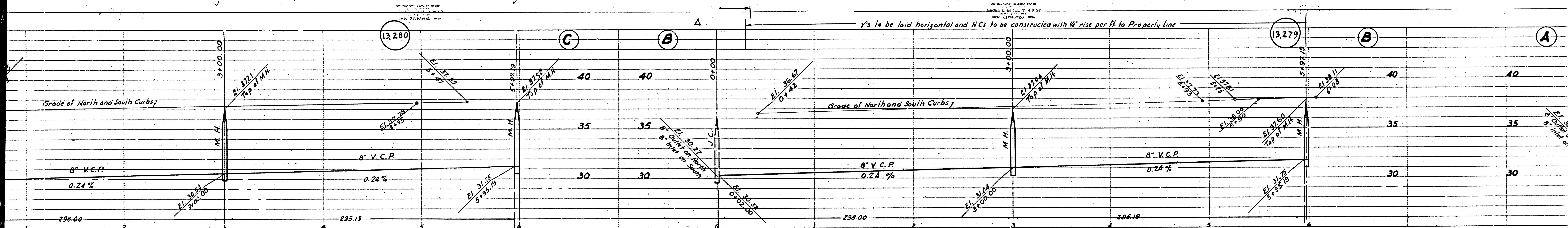
APPROVED BY [Signature] OFFICE ENGINEER

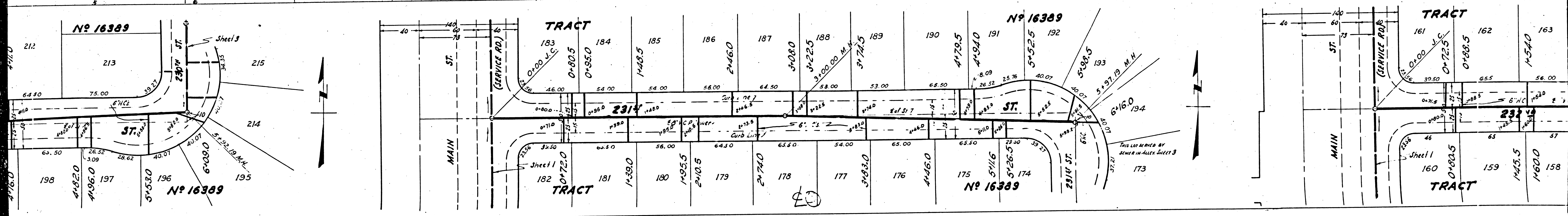
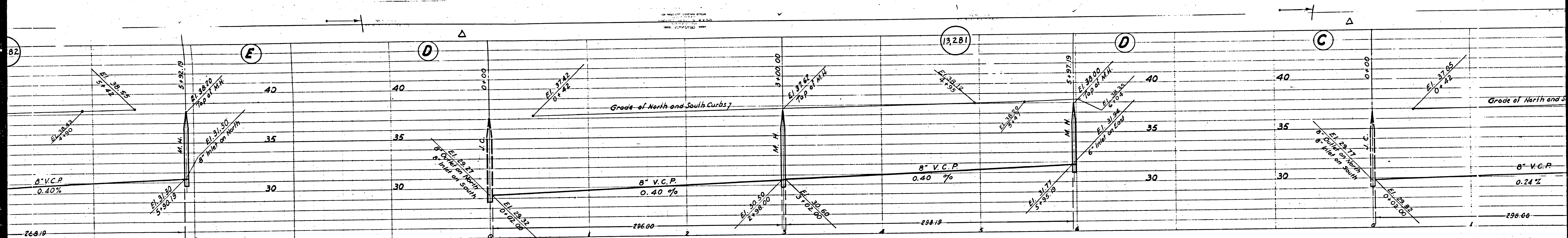
CHECKED BY Richard E. Kuhn 9-4-1951 OFFICE OF COUNTY ENGINEER, REG. C.E. NO. 7860

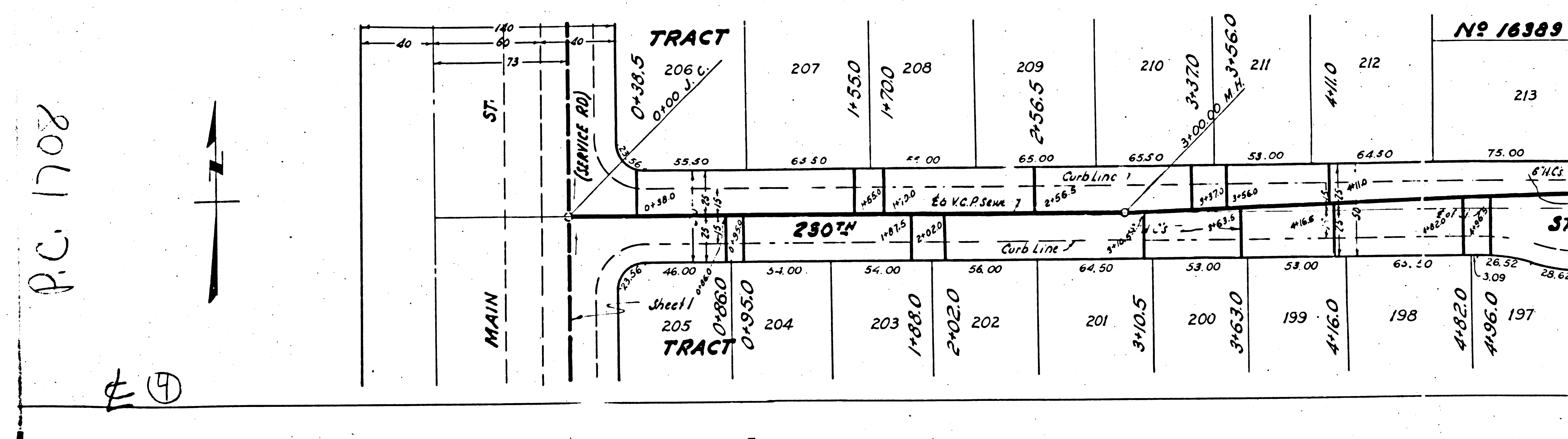
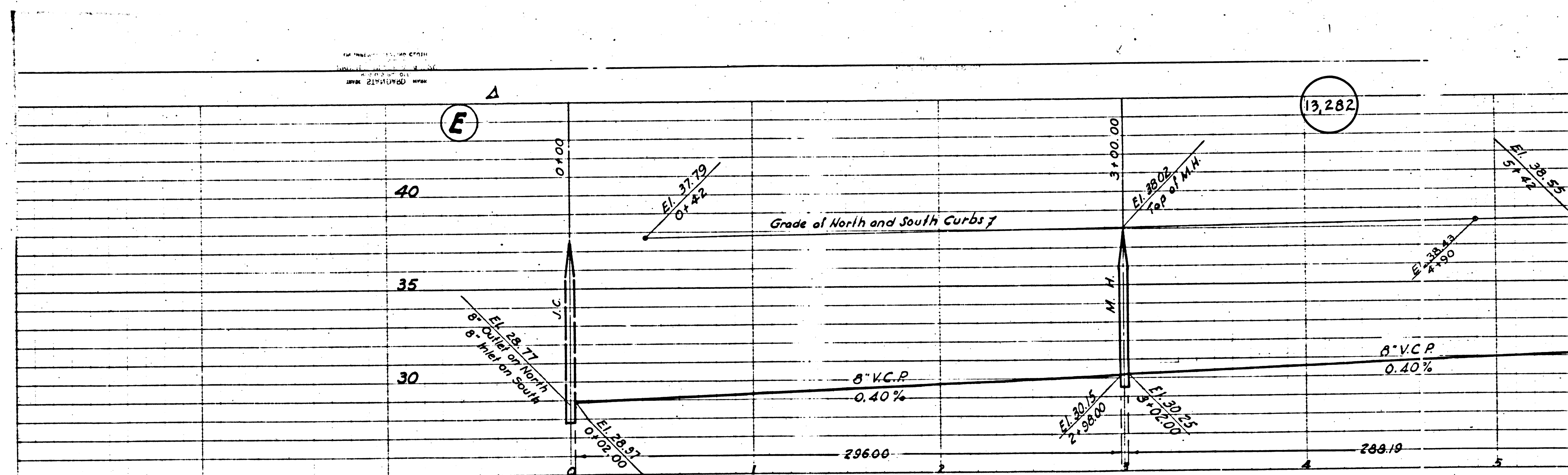
APR 10 1951

SHEET 2 OF 3 SHEETS

3385 24 535 25 535 26 535 27 535 28 535 29 535 30 535 31 535 32 535 33 535 34 535 35 535 36 535 37 535 38 535 39 535 40 535 41 535 42 535 43 535 44 535 45 535 46 535 47 535 48 535 49 535 50 535 51 535 52 535 53 535 54 535 55 535 56 535 57 535 58 535 59 535 60 535 61 535 62 535 63 535 64 535 65 535 66 535 67 535 68 535 69 535 70 535 71 535 72 535 73 535 74 535 75 535 76 535 77 535 78 535 79 535 80 535 81 535 82 535 83 535 84 535 85 535 86 535 87 535 88 535 89 535 90 535 91 535 92 535 93 535 94 535 95 535 96 535 97 535 98 535 99 535 100 535 101 535 102 535 103 535 104 535 105 535 106 535 107 535 108 535 109 535 110 535 111 535 112 535 113 535 114 535 115 535 116 535 117 535 118 535 119 535 120 535 121 535 122 535 123 535 124 535 125 535 126 535 127 535 128 535 129 535 130 535 131 535 132 535 133 535 134 535 135 535 136 535 137 535 138 535 139 535 140 535 141 535 142 535 143 535 144 535 145 535 146 535 147 535 148 535 149 535 150 535 151 535 152 535 153 535 154 535 155 535 156 535 157 535 158 535 159 535 160 535 161 535 162 535 163 535 164 535 165 535 166 535 167 535 168 535 169 535 170 535 171 535 172 535 173 535 174 535 175 535 176 535 177 535 178 535 179 535 180 535 181 535 182 535 183 535 184 535 185 535 186 535 187 535 188 535 189 535 190 535 191 535 192 535 193 535 194 535 195 535 196 535 197 535 198 535 199 535 200 535 201 535 202 535 203 535 204 535 205 535 206 535 207 535 208 535 209 535 210 535 211 535 212 535 213 535 214 535 215 535 216 535 217 535 218 535 219 535 220 535 221 535 222 535 223 535 224 535 225 535 226 535 227 535 228 535 229 535 230 535 231 535 232 535 233 535 234 535 235 535 236 535 237 535 238 535 239 535 240 535 241 535 242 535 243 535 244 535 245 535 246 535 247 535 248 535 249 535 250 535 251 535 252 535 253 535 254 535 255 535 256 535 257 535 258 535 259 535 260 535 261 535 262 535 263 535 264 535 265 535 266 535 267 535 268 535 269 535 270 535 271 535 272 535 273 535 274 535 275 535 276 535 277 535 278 535 279 535 280 535 281 535 282 535 283 535 284 535 285 535 286 535 287 535 288 535 289 535 290 535 291 535 292 535 293 535 294 535 295 535 296 535 297 535 298 535 299 535 300 535 301 535 302 535 303 535 304 535 305 535 306 535 307 535 308 535 309 535 310 535 311 535 312 535 313 535 314 535 315 535 316 535 317 535 318 535 319 535 320 535 321 535 322 535 323 535 324 535 325 535 326 535 327 535 328 535 329 535 330 535 331 535 332 535 333 535 334 535 335 535 336 535 337 535 338 535 339 535 340 535 341 535 342 535 343 535 344 535 345 535 346 535 347 535 348 535 349 535 350 535 351 535 352 535 353 535 354 535 355 535 356 535 357 535 358 535 359 535 360 535 361 535 362 535 363 535 364 535 365 535 366 535 367 535 368 535 369 535 370 535 371 535 372 535 373 535 374 535 375 535 376 535 377 535 378 535 379 535 380 535 381 535 382 535 383 535 384 535 385 535 386 535 387 535 388 535 389 535 390 535 391 535 392 535 393 535 394 535 395 535 396 535 397 535 398 535 399 535 400 535 401 535 402 535 403 535 404 535 405 535 406 535 407 535 408 535 409 535 410 535 411 535 412 535 413 535 414 535 415 535 416 535 417 535 418 535 419 535 420 535 421 535 422 535 423 535 424 535 425 535 426 535 427 535 428 535 429 535 430 535 431 535 432 535 433 535 434 535 435 535 436 535 437 535 438 535 439 535 440 535 441 535 442 535 443 535 444 535 445 535 446 535 447 535 448 535 449 535 450 535 451 535 452 535 453 535 454 535 455 535 456 535 457 535 458 535 459 535 460 535 461 535 462 535 463 535 464 535 465 535 466 535 467 535 468 535 469 535 470 535 471 535 472 535 473 535 474 535 475 535 476 535 477 535 478 535 479 535 480 535 481 535 482 535 483 535 484 535 485 535 486 535 487 535 488 535 489 535 490 535 491 535 492 535 493 535 494 535 495 535 496 535 497 535 498 535 499 535 500 535 501 535 502 535 503 535 504 535 505 535 506 535 507 535 508 535 509 535 510 535 511 535 512 535 513 535 514 535 515 535 516 535 517 535 518 535 519 535 520 535 521 535 522 535 523 535 524 535 525 535 526 535 527 535 528 535 529 535 530 535 531 535 532 535 533 535 534 535 535 536 535 537 535 538 535 539 535 540 535 541 535 542 535 543 535 544 535 545 535 546 535 547 535 548 535 549 535 550 535 551 535 552 535 553 535 554 535 555 535 556 535 557 535 558 535 559 535 560 535 561 535 562 535 563 535 564 535 565 535 566 535 567 535 568 535 569 535 570 535 571 535 572 535 573 535 574 535 575 535 576 535 577 535 578 535 579 535 580 535 581 535 582 535 583 535 584 535 585 535 586 535 587 535 588 535 589 535 590 535 591 535 592 535 593 535 594 535 595 535 596 535 597 535 598 535 599 535 600 535 601 535 602 535 603 535 604 535 605 535 606 535 607 535 608 535 609 535 610 535 611 535 612 535 613 535 614 535 615 535 616 535 617 535 618 535 619 535 620 535 621 535 622 535 623 535 624 535 625 535 626 535 627 535 628 535 629 535 630 535 631 535 632 535 633 535 634 535 635 535 636 535 637 535 638 535 639 535 640 535 641 535 642 535 643 535 644 535 645 535 646 535 647 535 648 535 649 535 650 535 651 535 652 535 653 535 654 535 655 535 656 535 657 535 658 535 659 535 660 535 661 535 662 535 663 535 664 535 665 535 666 535 667 535 668 535 669 535 670 535 671 535 672 535 673 535 674 535 675 535 676 535 677 535 678 535 679 535 680 535 681 535 682 535 683 535 684 535 685 535 686 535 687 535 688 535 689 535 690 535 691 535 692 535 693 535 694 535 695 535 696 535 697 535 698 535 699 535 700 535 701 535 702 535 703 535 704 535 705 535 706 535 707 535 708 535 709 535 710 535 711 535 712 535 713 535 714 535 715 535 716 535 717 535 718 535 719 535 720 535 721 535 722 535 723 535 724 535 725 535 726 535 727 535 728 535 729 535 730 535 731 535 732 535 733 535 734 535 735 535 736 535 737 535 738 535 739 535 740 535 741 535 742 535 743 535 744 535 745 535 746 535 747 535 748 535 749 535 750 535 751 535 752 535 753 535 754 535 755 535 756 535 757 535 758 535 759 535 760 535 761 535 762 535 763 535 764 535 765 535 766 535 767 535 768 535 769 535 770 535 771 535 772 535 773 535 774 535 775 535 776 535 777 535 778 535 779 535 780 535 781 535 782 535 783 535 784 535 785 535 786 535 787 535 788 535 789 535 790 535 791 535 792 535 793 535 794 535 795 535 796 535 797 535 798 535 799 535 800 535 801 535 802 535 803 535 804 535 805 535 806 535 807 535 808 535 809 535 810 535 811 535 812 535 813 535 814 535 815 535 816 535 817 535 818 535 819 535 820 535 821 535 822 535 823 535 824 535 825 535 826 535 827 535 828 535 829 535 830 535 831 535 832 535 833 535 834 535 835 535 836 535 837 535 838 535 839 535 840 535 841 535 842 535 843 535 844 535 845 535 846 535 847 535 848 535 849 535 850 535 851 535 852 535 853 535 854 535 855 535 856 535 857 535 858 535 859 535 860 535 861 535 862 535 863 535 864 535 865 535 866 535 867 535 868 535 869 535 870 535 871 535 872 535 873 535 874 535 875 535 876 535 877 535 878 535 879 535 880 535 881 535 882 535 883 535 884 535 885 535 886 535 887 535 888 535 889 535 890 535 891 535 892 535 893 535 894 535 895 535 896 535 897 535 898 535 899 535 900 535 901 535 902 535 903 535 904 535 905 535 906 535 907 535 908 535 909 535 910 535 911 535 912 535 913 535 914 535 915 535 916 535 917 535 918 535 919 535 920 535 921 535 922 535 923 535 924 535 925 535 926 535 927 535 928 535 929 535 930 535 931 535 932 535 933 535 934 535 935 535 936 535 937 535 938 535 939 535 940 535 941 535 942 535 943 535 944 535 945 535 946 535 947 535 948 535 949 535 950 535 951 535 952 535 953 535 954 535 955 535 956 535 957 535 958 535 959 535 960 535 961 535 962 535 963 535 964 535 965 535 966 535 967 535 968 535 969 535 970 535 971 535 972 535 973 535 974 535 975 535 976 535 977 535 978 535 979 535 980 535 981 535 982 535 983 535 984 535 985 535 986 535 987 535 988 535 989 535 990 535 991 535 992 535 993 535 994 535 995 535 996 535 997 535 998 535 999 535 1000 535

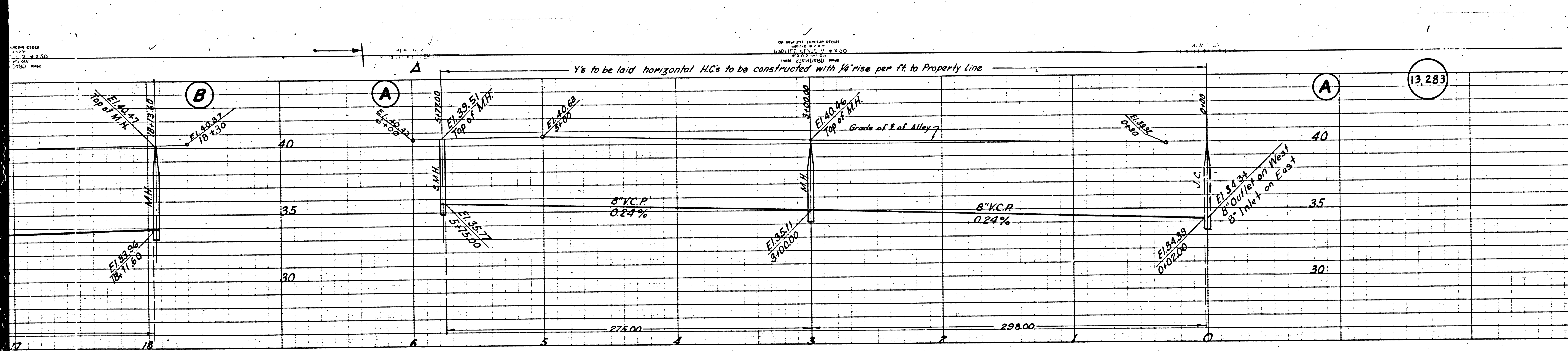




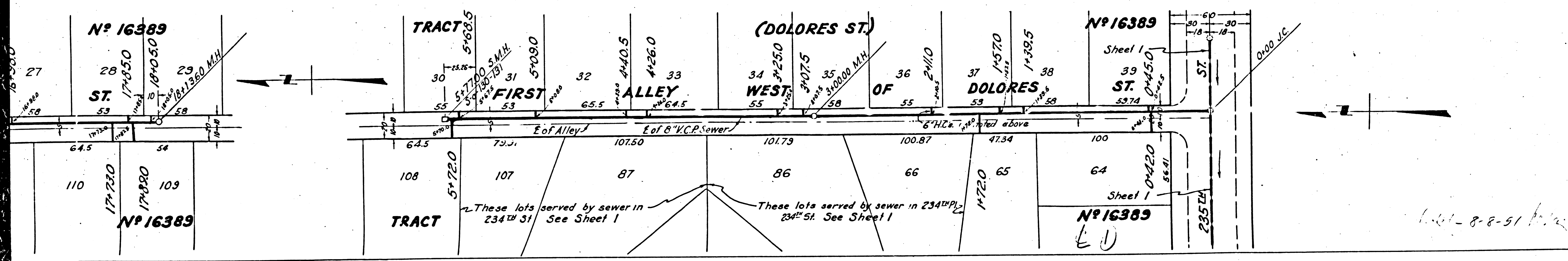


P.C. 1708

⊕



PLAN PROFILE AND GRADE OF **3**
SANITARY SEWERS
 TO BE CONSTRUCTED IN
FIRST ALLEY WEST OF DOLORES STREET
 BETWEEN NORTHERLY LINE OF TRACT NO. 18302 AND 229TH ST.
229TH STREET
 BETWEEN MAIN ST. AND 229TH ST. (SOUTH)
 BETWEEN 229TH ST. (WEST) AND A POINT 30 FT. SOUTHWEST
229TH PLACE
 BETWEEN MAIN ST. AND 229TH ST.
230TH STREET
 BETWEEN 230TH ST. (SOUTH) AND A POINT 60 FT. NORTHERLY
SANITARY SEWER RIGHT OF WAY
 IN LOT 252 TRACT NO. 18302
 PRIVATE CONTRACT NO. 1708
 W.S. 28 MARCH 1951
 SCALE VERT. 1" = 4'
 HORIZ. 1" = 40'
SHEET 3 OF 3 SHEETS

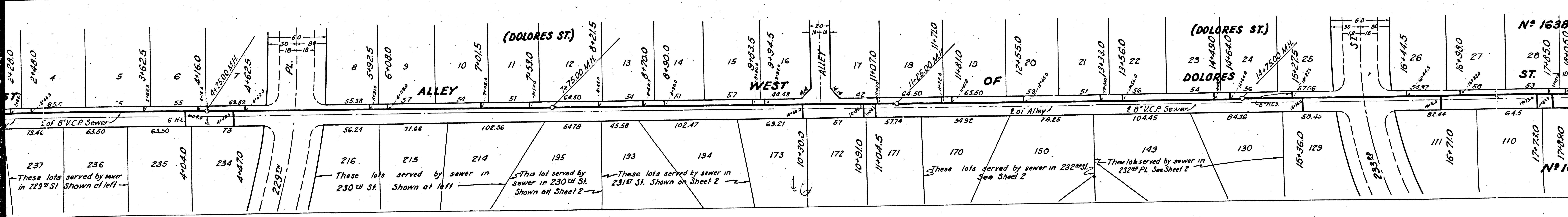
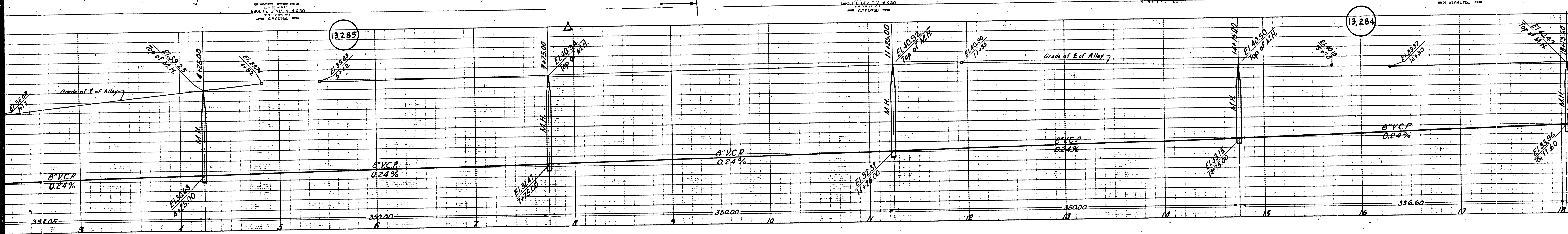


PREPARED IN THE OFFICE OF
LEONARD H. GOWDY
Leonard H. Gowdy
 416 C.E. NO. 4815
 FOR LEGEND
 SEE PLAN NO. 2-64
 RECEIVED
 APR 10 1951
 COUNTY ENGINEER
 COUNTY OF LOS ANGELES
 OFFICE ENGINEER
 APPROVED BY *[Signature]*
 CHECKED BY *[Signature]* 4-2-1951
 OFFICE OF COUNTY ENGINEER, 416 C.E. NO. 7860
 SHEET 3 OF 3 SHEETS
 SEEN AT 5301 W. 53RD ST. AFTER 2ND BEMER W. N. 18314 TRACT NO. 18302

BY MUTUAL SERVICE CROSS
 SQUARES SET TO 1" = 4.130'
 DATE: 11/11/20
 SHEET: 13,284

BY MUTUAL SERVICE CROSS
 SQUARES SET TO 1" = 4.130'
 DATE: 11/11/20
 SHEET: 13,284

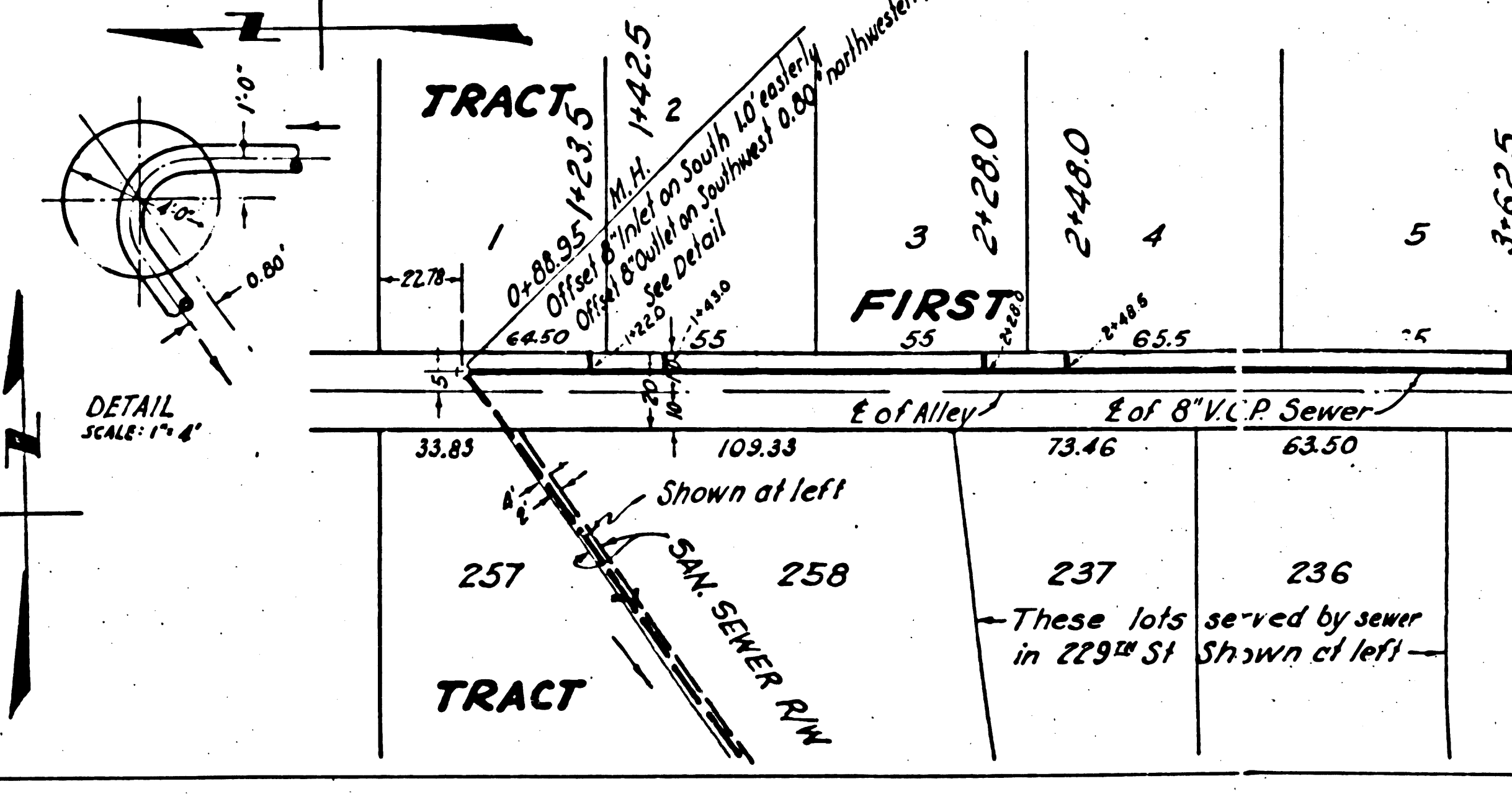
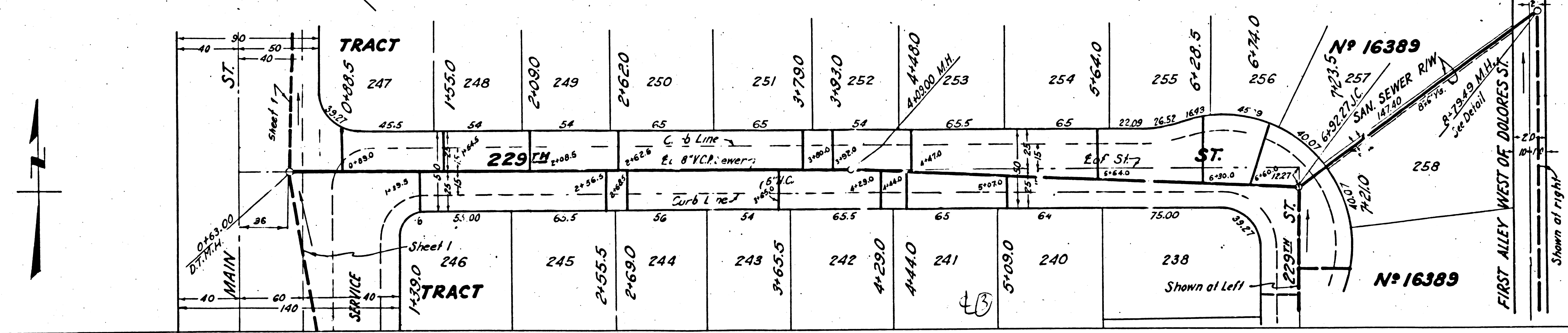
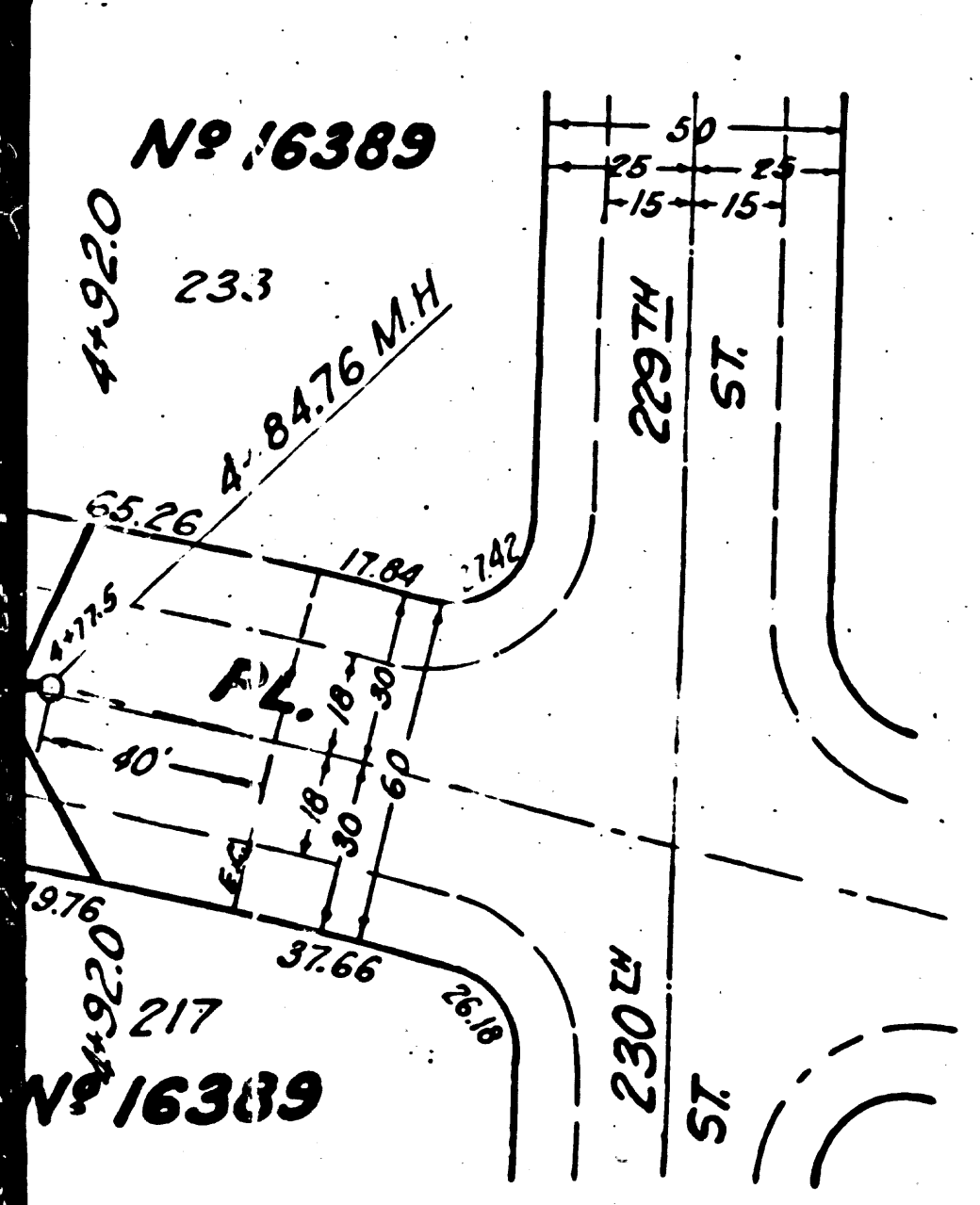
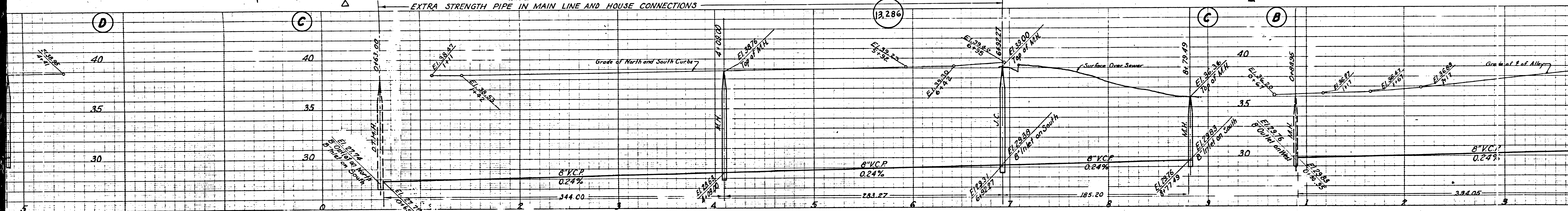
BY MUTUAL SERVICE CROSS
 SQUARES SET TO 1" = 4.130'
 DATE: 11/11/20
 SHEET: 13,284



N^o 16385
 ST.
 53

N^o 16380

EXTRA STRENGTH PIPE IN MAIN LINE AND HOUSE CONNECTIONS



ON PLANNED LAYOUT FROM
ASBUILT RECORDS
REVISIONS
DATE

ON PLANNED LAYOUT FROM
ASBUILT RECORDS
REVISIONS
DATE

ON PLANNED LAYOUT FROM
ASBUILT RECORDS
REVISIONS
DATE

ON PLANNED LAYOUT FROM
ASBUILT RECORDS
REVISIONS
DATE

