

12,530

PROFILE, ALIGNMENT AND GRADE OF  
SANITARY SEWER  
TO BE CONSTRUCTED IN  
MAPLEDALE STREET  
APPROX. 131 FT. EAST OF LONGWORTH AVE.  
TO APPROX. 83 FT. WEST OF LONGWORTH AVE.

- (1) USE STANDARD MANHOLE FRAME AND COVER S-2-117
- (2) USE STANDARD STRENGTH PIPE.
- (3) USE CEMENT MORTAR FOR ALL VITRIFIED CLAY PIPE JOINTS
- (4) RESURFACE ALL TRENCHES WITHIN PAVED AREA TO MEET L.A. CO. ROAD DEPT. REQUIREMENTS.
- (5) CONSTRUCT HOUSE CONNECTIONS WITH INVERT AT PROPERTY LINE (2) FT. BELOW CURB GRADE
- (6) ALL STRUCTURES SHALL BE BRICK SEWER STRUCTURES S-3-106
- (7) STOPPERS TO BE INSTALLED WITH JOINT COMPOUND BY MANUFACTURER'S PLANT SPECS. SEC. 33.4B.
- (8) CONCRETE PAVEMENT TO BE CUT NOT LESS THAN 2" DEPTH WITH CONCRETE SAW SPEC. 58C.65

NOTE: NO REPRESENTATIVE OF THE COUNTY ENGINEER WILL SURVEY OR LAYOUT ANY PORTION OF THE WORK. THE OWNER OR HIS AUTHORIZED REPRESENTATIVE SHALL FURNISH THE COUNTY ENGINEER WITH GRADE SHEETS AND STATIONS OF ALL HOUSE CONNECTIONS AND Y BRANCHES AND SHALL PROVIDE STAKES FOR THEM AT THEIR PROPER LOCATIONS WITH THEIR STATIONING PLAINLY MARKED. ANY CHANGE IN LOCATION SHALL BE REQUESTED IN WRITING BY THE OWNER OR HIS REPRESENTATIVE. NO REVISION SHALL BE MADE IN THESE PLANS WITHOUT APPROVAL OF THE COUNTY ENGINEER.

PRIVATE CONTRACT No. 1715  
SHEET 1 OF 1 SHEETS  
W. S. 33  
MARCH, 1951

SCALE V 1"=4'  
H 1"=40'

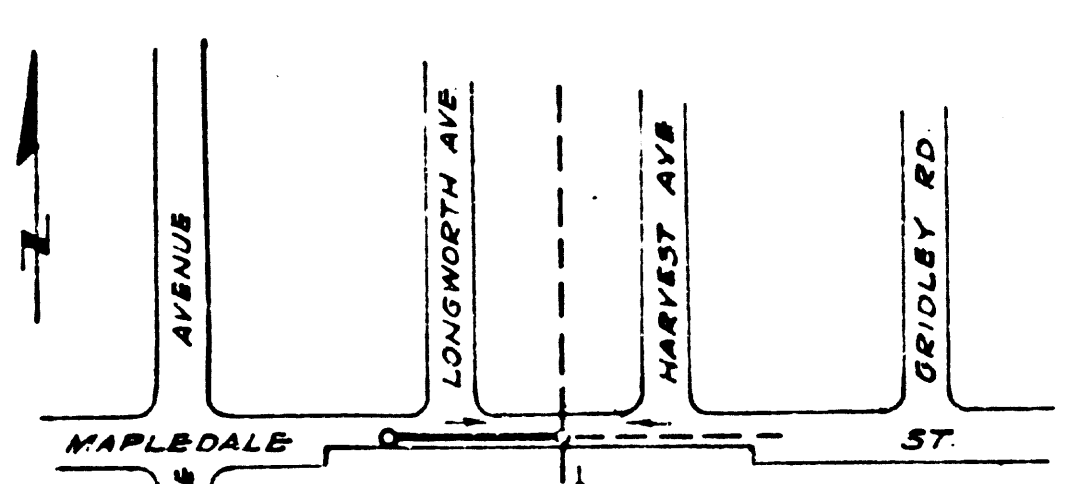
PREPARED IN THE OFFICES OF  
BARCLAY SURVEYING CO.

BY: *[Signature]*  
R.C.E. No. 1302

FOR LEGEND  
See Plan No 5464

NOTE: GRADES TO WHICH THIS IMPROVEMENT IS TO BE CONSTRUCTED ARE SHOWN ON PLAN AND PROFILE. GRADE POINTS FOR TOP OF CURB, CENTER LINE OF STREET, CENTER LINE OF ALLEY ARE SHOWN BY CIRCLES ON PROFILE. AT ALL POINTS BETWEEN DESIGNATED POINTS THE GRADE SHALL BE ESTABLISHED SO AS TO CONFORM TO A STRAIGHT LINE DRAWN BETWEEN SAID DESIGNATED POINTS. ELEVATIONS ARE IN FEET ABOVE U.S.G. DATUM OR MEAN SEA LEVEL. THIS DRAWING AND THE DATA HEREON ARE HEREBY MADE A PART OF THE SPECIFICATIONS. WORK TO BE CONSTRUCTED ACCORDING TO SPECIFICATIONS ON FILE IN THE OFFICES OF THE COUNTY ENGINEER AND SHALL BE PROSECUTED ONLY IN THE PRESENCE OF THE COUNTY ENGINEER. BEFORE WORK CAN BE STARTED, THE CONTRACTOR MUST OBTAIN A PERMIT TO EXCAVATE IN COUNTY STREETS FROM THE L.A. CO. ROAD DEPT. 211 S. MAIN ST., L.A. AND MAKE A DEPOSIT WITH THE COUNTY ENGINEER 828 L.A. CO. ENG. BLDG. SUFFICIENT TO COVER THE COST OF CONSTRUCTION INSPECTION AND RECORD PLANS. APPROVAL OF THIS PLAN BY THE COUNTY OF LOS ANGELES DOES NOT CONSTITUTE A REPRESENTATION AS TO THE ACCURACY OF THE LOCATION OF OR THE EXISTENCE OR NON-EXISTENCE OF ANY UNDERGROUND UTILITY PIPE OR STRUCTURE WITHIN THE LIMITS OF THIS PROJECT.

APPROVED: *[Signature]* COUNTY ENGINEER  
APPROVED: *[Signature]* CHIEF ENGINEER, L.A. CO. SANITATION DIST. NO. 2  
BY: *[Signature]* OFFICE ENGINEER  
CHECKED BY: *[Signature]* OFFICE OF COUNTY ENGINEER

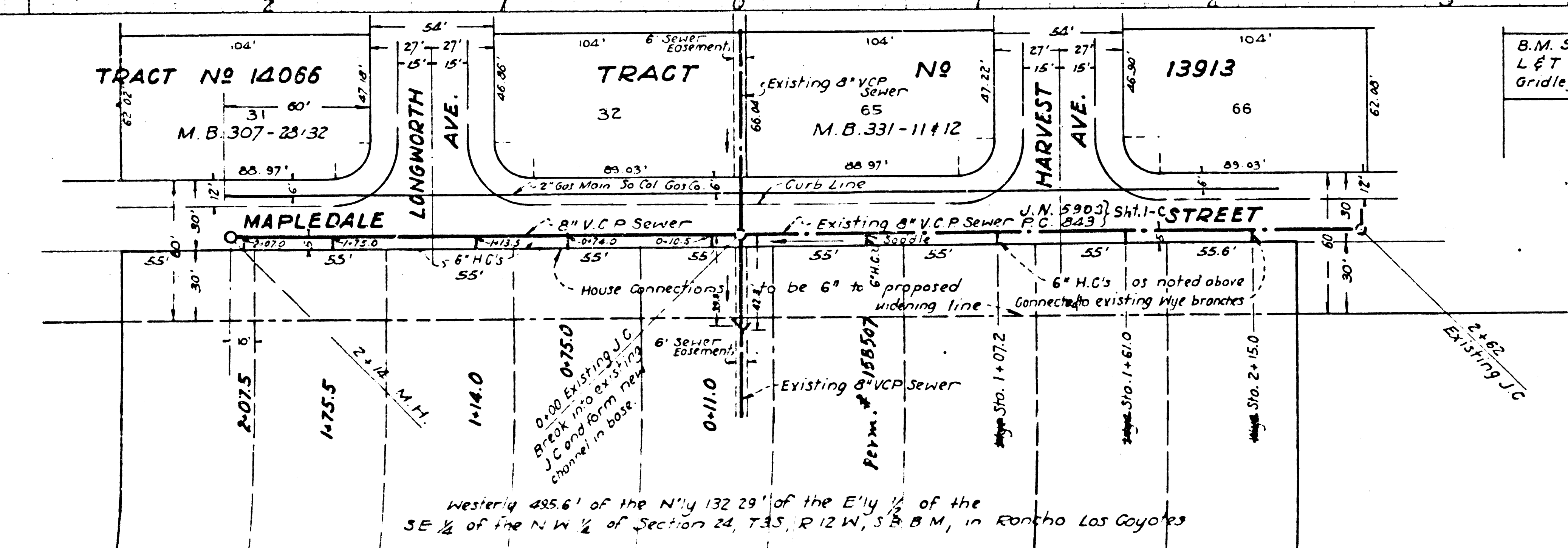
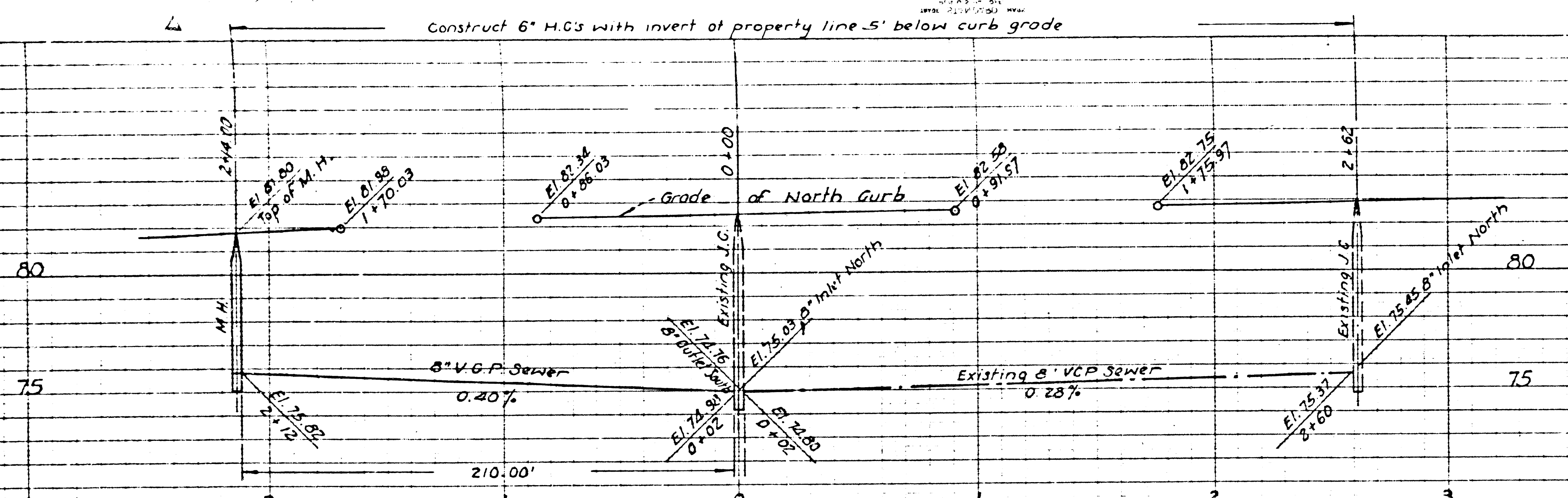


INDEX MAP  
SCALE 1"=300'

PC. 1715  
J.N. 3821

40

Construct 6" H.C.'s with invert at property line .5' below curb grade



B.M. 57 701-270 El. 85.127  
L & T 1' E. of C.R. at SE cor.  
Gridley Road & Rosecrans Ave.