

L.A. Co. Road Dist. B.M. 4.0 830-117  
 Elev. 138.38, 138.50, 138.62, 138.74  
 N.W. Cor. of Lot 26, 27, 28, 29 of Map C.R.

12.612

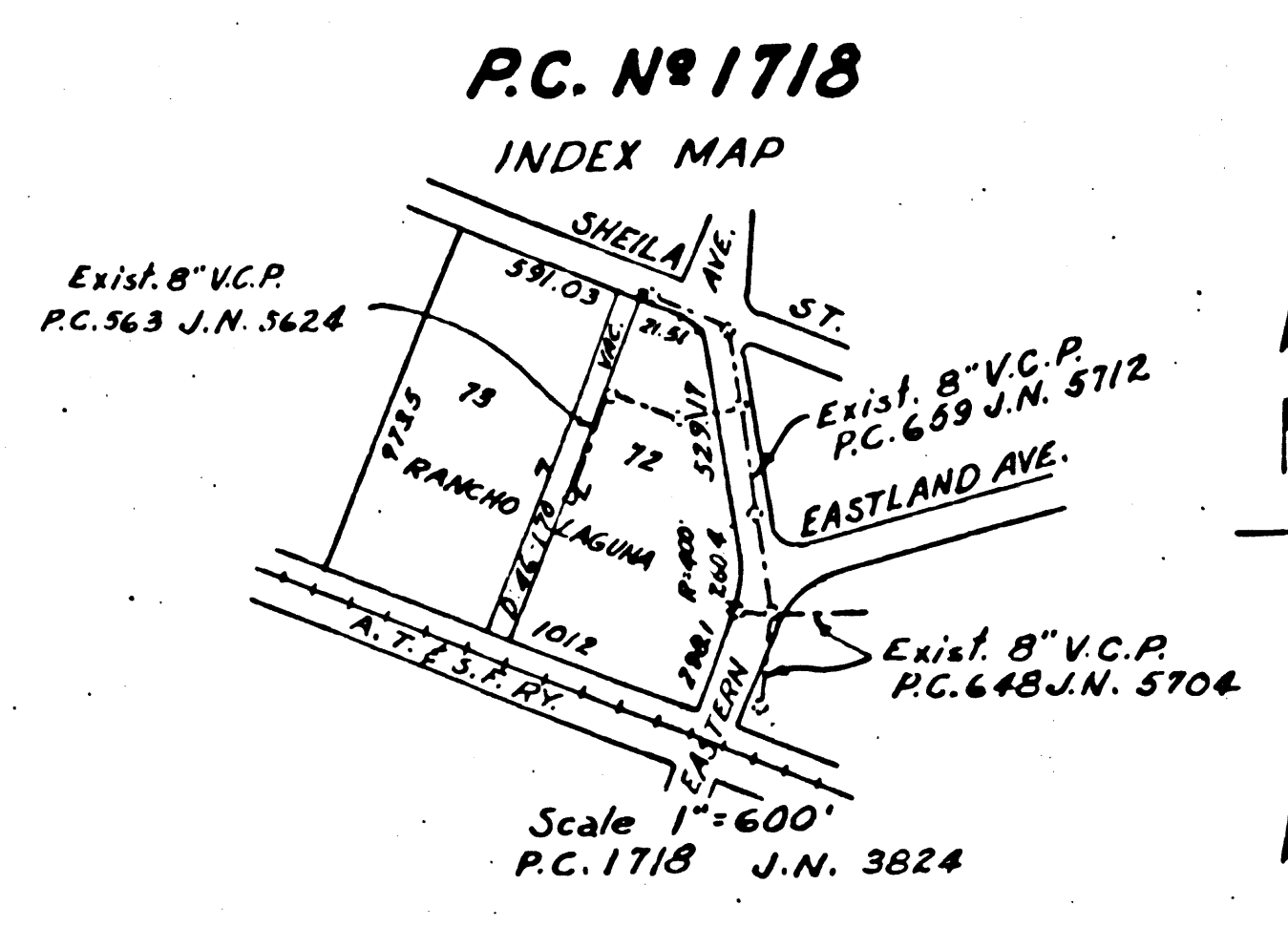
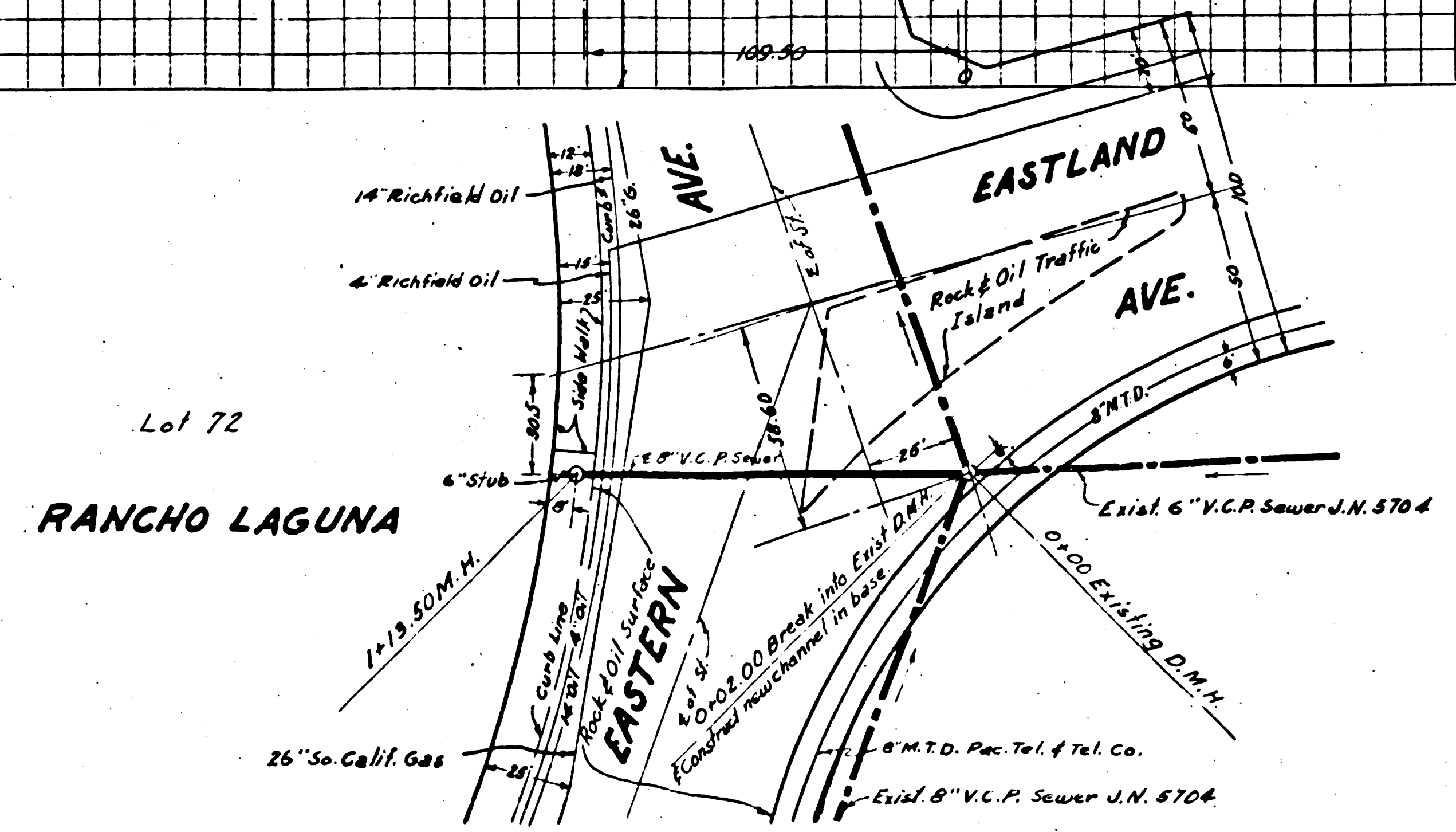
PROFILE, ALIGNMENT AND GRADE OF  
**SANITARY SEWERS**  
 TO BE CONSTRUCTED IN  
**EASTLAND AVE.**  
 AT INTERSECTION OF EASTLAND AVE.

PRIVATE CONTRACT NO 1718  
 W.S. 36  
 ONE SHEET

PREPARED IN THE OFFICES OF  
 EVERETT A. PHILLIPS  
 BY *[Signature]*  
 REG. C.E. 477220

SCALE: VERT. 1"=4'  
 HORIZ. 1"=40'

APRIL 1951



NOTE: ELEVATIONS ARE IN FEET ABOVE U.S.S. DATUM OR MEAN SEA LEVEL.  
 THIS DRAWING AND THE DATA HEREON ARE HEREBY MADE A PART OF THE SPECIFICATIONS.  
 WORK SHALL BE CONSTRUCTED ACCORDING TO SPECIFICATIONS ON FILE IN THE OFFICE OF THE COUNTY ENGINEER AND SHALL BE PROTECTED ONLY IN THE PRESENCE OF THE COUNTY ENGINEER.  
 BEFORE WORK CAN BE STARTED THE CONTRACTOR MUST OBTAIN A PERMIT TO EXCAVATE IN COUNTY STREETS FROM THE L.A. COUNTY ROAD DEPARTMENT, FURNISH TO THE STREET AND LANDS DEPARTMENT WITH THE COUNTY ENGINEER, THE COUNTY ENGINEER'S OFFICE, SUFFICIENT TO COVER THE COST OF CONSTRUCTION INSPECTION AND RECORD PLANS.  
 IF WORK IS TO BE DONE IN A STATE HIGHWAY, A PERMIT MUST BE OBTAINED AFTER THE STATE OF CALIFORNIA HAS BEEN NOTIFIED, IN WRITING, BY THE CONTRACTOR.  
 APPROVAL OF THIS PLAN BY THE COUNTY OF LOS ANGELES DOES NOT CONSTITUTE A REPRESENTATION BY THE COUNTY OF THE LOCATION OF OR THE EXISTENCE OR NON-EXISTENCE OF ANY UNDERGROUND UTILITY, PIPE OR STRUCTURE WITHIN THE LIMITS OF THE PROJECT.

COUNTY OF LOS ANGELES, CALIFORNIA  
 APPROVED *[Signature]*  
 COUNTY ENGINEER  
 APPROVED *[Signature]*  
 CHIEF ENGINEER OF COUNTY  
 SANITATION DISTRICT NO. 2  
 BY *[Signature]*  
 OFFICE ENGINEER  
 CHECKED *[Signature]* 4/6/51  
 OFFICE OF COUNTY ENGINEER P. O. BOX 6412

APR 10 1951  
 SANITATION DISTRICT NO. 2

PC 1718

PC 1718  
 EASTLAND AVE.

PC 1718

ED

Notes 5-21-51