

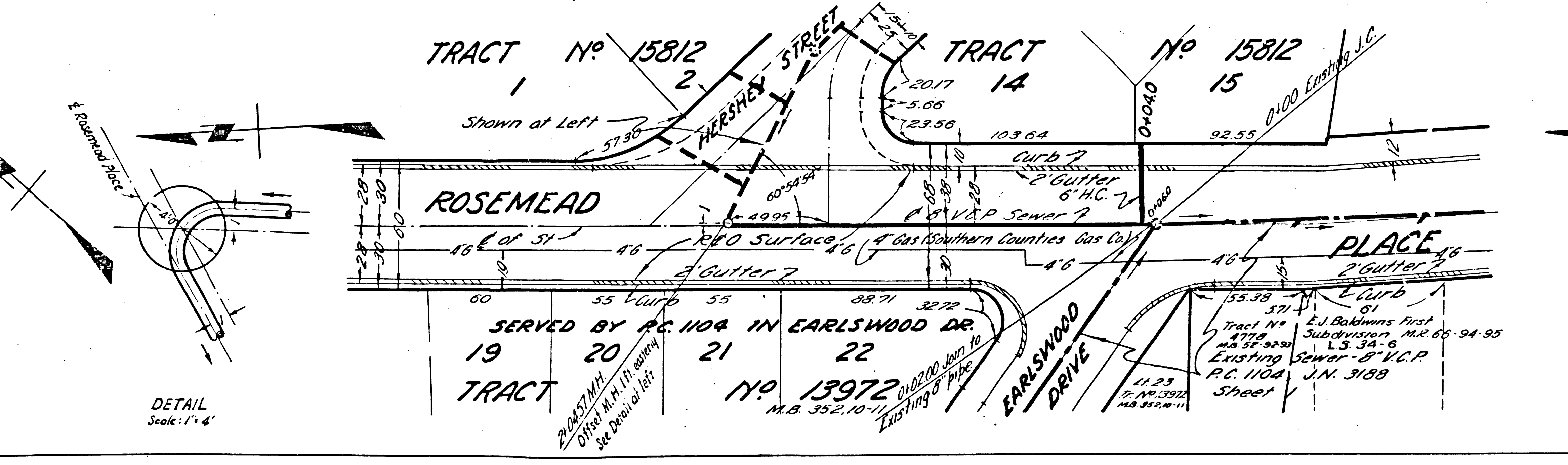
(1) USE STANDARD MANHOLE FRAME AND COVER, 3'-0" I.T. (EXCEPT AS NOTED)
 (2) USE STANDARD STRENGTH PIPE
 (3) USE CEMENT MORTAR FOR ALL VITRIFIED-CLAY PIPE JOINTS
 (4) RESURFACE ALL TRENCH WITHIN PAVED AREA TO MEET LOS ANGELES COUNTY ROAD DEPT. REQUIREMENTS
 (5) CONSTRUCT HOUSE CONNECTIONS WITH INVERT AT PROPOSED LINE 3 FEET BELOW CURB GRADE (EXCEPT AS NOTED)
 (6) INCREASE FOUR FEET OF SEWER AT POINTS OF INTERFERENCE WITH POLES AS PER 5-a-119
 (7) ALL STRUCTURES SHALL BE BRICK SEWER STRUCTURES, 3'-0" I.T. (EXCEPT AS NOTED)

NOTE:
 NO REPRESENTATIVE OF THE COUNTY ENGINEER WILL SURVEY OR LAY OUT ANY PORTION OF THE WORK. THE OWNER OR HIS AUTHORIZED REPRESENTATIVE SHALL FURNISH THE COUNTY ENGINEER WITH ALL NECESSARY DATA AND INFORMATION AND SHALL PROVIDE STAKES FOR THEM AT THEIR PROPER LOCATIONS WITH SATISFACTORY PLANNING MARKS IN LOCATION SHALL BE SUBMITTED IN WRITING BY THE OWNER OR HIS REPRESENTATIVE. NO REVISIONS SHALL BE MADE IN THESE PLANS WITHOUT APPROVAL OF THE COUNTY ENGINEER.

NOTE:
 PROVIDE STAKES ON THE PROPERTY LINES OR PROPERTY LINES APPROVED, AT RIGHT ANGLES TO THE SEWER LINE, AT THE CENTER LINE OF EACH MANHOLE.

NOTE:
 STAKES TO BE INSTALLED WITH JOINT COMPANED BY MANUFACTURER AT HIS OWNERS RISK. SEE BR. 11-1-11. CONCRETE FOUNDATION TO BE CUT NOT LESS THAN 2" IN DEPTH, WITH CONCRETE SAW THROUGH SEE 60.

PROFILE, ALIGNMENT AND GRADE OF
SANITARY SEWERS
 TO BE CONSTRUCTED IN
ROSEMEAD PLACE
 FROM EARLSWOOD DRIVE TO
HERSHEY STREET
 IN
TRACT NO 15812
PRIVATE CONTRACT NO. 1723
W.S. 44
SHEET 1 OF 1 SHEET
 SCALE: VERT. 1" = 4'
 HORIZ. 1" = 40'
 MARCH, 1951
 PREPARED BY: *Leon W. Tybirk*



B.M. 19113 Elev. 275.45 Rd. Dept. F.B. C.C. 963-14
 P.C. R.R. 70 West of 1/2 of Rosemead
 L&T in 4" I.P.

INDEX MAP
 SCALE 1" = 400'
 P.C. 1723
 J.N. 3173

FOR LEGEND
 SEE PLAN 5-a-64

NOTE:
 GRADES TO WHICH THIS IMPROVEMENT IS TO BE CONSTRUCTED ARE SHOWN ON PLANS AND PROFILE GRADE POINTS FOR TOP OF CURB, CENTER LINE OF STREET OR CENTER LINE OF RAILY AND SHOWN BY CHANGES OF PROFILES. ALL POINTS BETWEEN DESIGNATED POINTS THE GRADE SHALL BE ESTABLISHED SO AS TO CONFORM TO A STRAIGHT LINE DRAWN BETWEEN SAID DESIGNATED POINTS.

EL ELEVATIONS ARE IN FEET ABOVE U.S.S. DATUM OR MEAN SEA LEVEL. THIS DRAWING AND THE DATA HEREON ARE HEREBY MADE A PART OF THE SPECIFICATIONS.

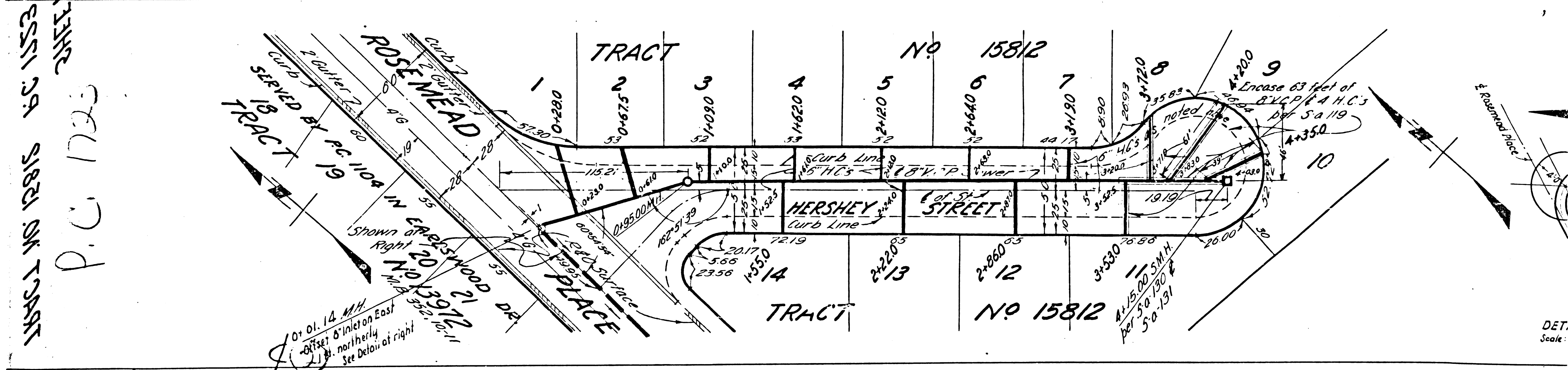
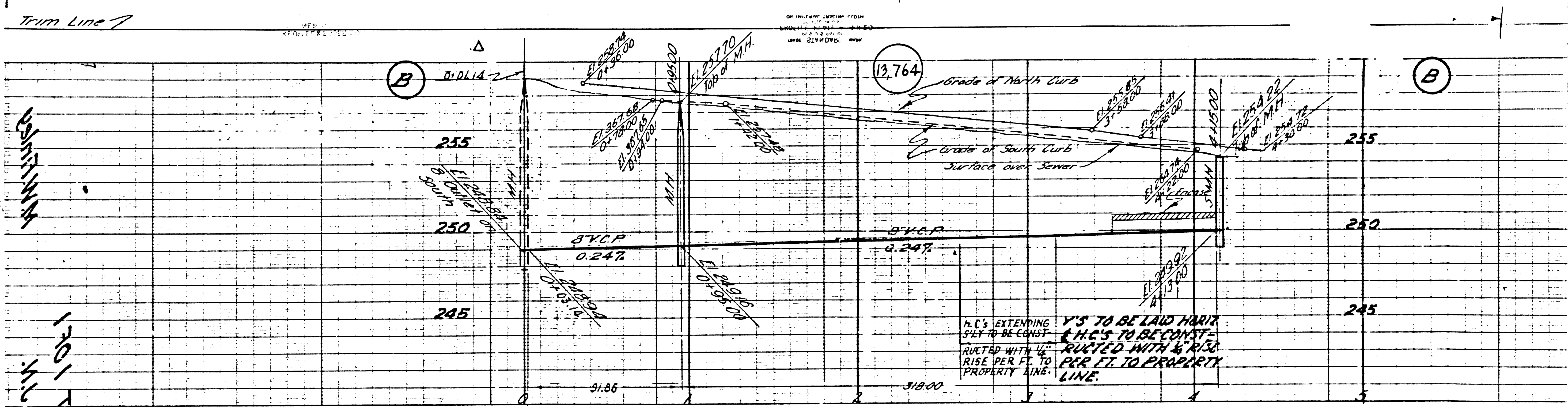
WORK SHALL BE CONSTRUCTED ACCORDING TO SPECIFICATIONS ON FILE IN THE OFFICE OF THE COUNTY ENGINEER AND SHALL BE PROSECUTED ONLY IN THE PRESENCE OF THE COUNTY ENGINEER.

BEFORE WORK CAN BE STARTED THE CONTRACTOR MUST OBTAIN A PERMIT TO EXCAVATE IN COUNTY STREETS FROM THE LA COUNTY ROAD DEPT., 20 SO MAIN STREET AND MAKE A DEPOSIT WITH THE COUNTY ENGINEER FOR LA COUNTY ENGINEERING ALSO SUFFICIENT TO COVER THE COST OF CONSTRUCTION INSPECTION AND RECORD PLANS.

APPROVAL OF THIS PLAN BY THE COUNTY OF LOS ANGELES DOES NOT CONSTITUTE A REPRESENTATION AS TO THE ACCURACY OF THE LOCATION OF OR THE EXISTENCE OR NON-EXISTENCE OF ANY UNDERGROUND UTILITY, PIPE OR STRUCTURE WITHIN THE LIMITS OF THIS PROJECT.

COUNTY OF LOS ANGELES, CALIFORNIA
 APPROVED: *[Signature]* COUNTY ENGINEER
 APPROVED BY: *[Signature]* CHIEF ENGINEER OF COUNTY SANITATION DISTRICT NO. 15
 APPROVED BY: *[Signature]* A.M. RAWN OFFICE ENGINEER

CHECKED BY: *[Signature]* 4-13-51
 OFFICE OF COUNTY ENGINEER
 REG. C.E. NO. 7860



TRACT NO 1582 IN 1982 ON TRACT
 P.C. 1723
 1981 TRACT
 1582 IN 1982 ON TRACT

Trim Line 7

Trim Line

DET
Scale