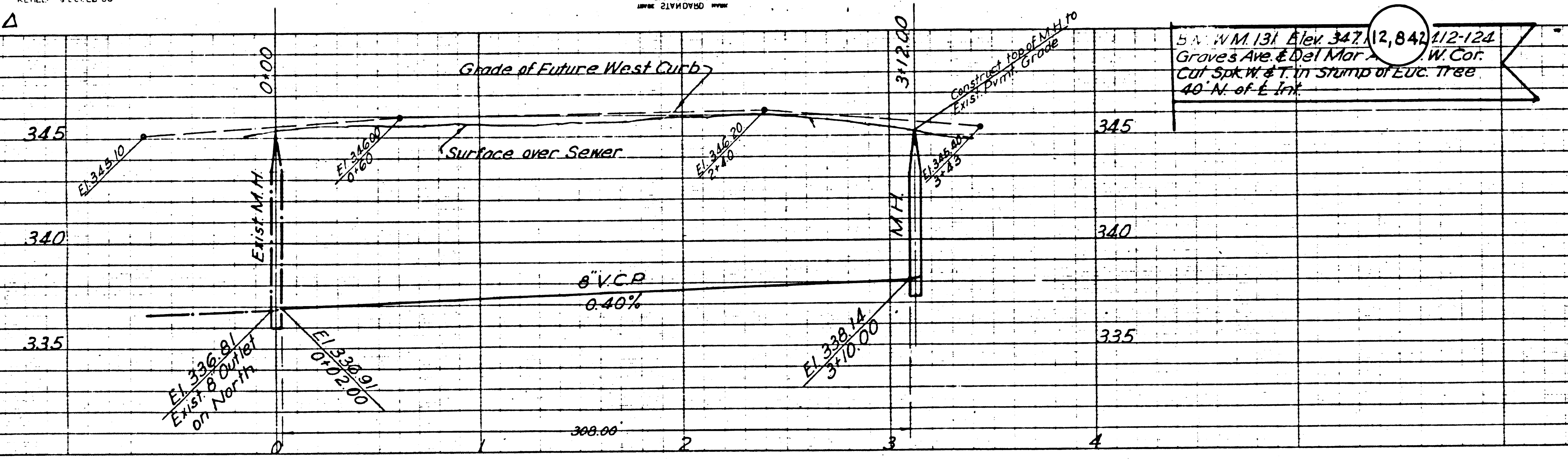


NOT TO SCALE  
REFLECT SETBACKS

SEE SHEET 12 FOR  
SHEET 13  
SHEET 14

SEE SHEET 12 FOR  
SHEET 13  
SHEET 14

Trim Line



- 1. USE STANDARD MANHOLE FRAMES AND COVERS. PAINT.
- 2. USE STANDARD STRENGTH PIPE (EXCEPT AS NOTED).
- 3. USE STANDARD JOINTS FOR ALL VITRIFIED-CLAY PIPE JOINTS.
- 4. RECESSE ALL TRENCH WITHIN PAVED AREAS TO MEET LOS ANGELES COUNTY ROAD DEPARTMENT'S "CALIFORNIA STATE HIGHWAY" MANUAL. IN ACCORDANCE WITH PERMITS.
- 5. CONSTRUCT HOUSE CONNECTIONS WITH INVERT AT PROPERTY LINE (6) FEET BELOW CURB GRADE (EXCEPT AS NOTED).
- 6. ENCASE FOUR FEET OF SEWER AT POINTS OF INTERFERENCE WITH POLES AS PER SPEC.
- 7. ALL STRUCTURES SHALL BE BRICK OR CONCRETE STRUCTURES 8" MIN.
- 8. SUBSTRUCT TOPS OF ALL STRUCTURES IN RIGHTS OF WAY 6 INCHES ABOVE FINISHED GRADE.

NOTE: NO REPRESENTATIVE OF THIS COUNTY ENGINEER WILL SURVEY OR LAYOUT ANY PORTION OF THE WORK. THE OWNER OR HIS AUTHORIZED REPRESENTATIVE SHALL FURNISH THE COUNTY ENGINEER WITH GRADE SHEETS AND STATIONS OF ALL HOUSE CONNECTIONS AND V. BRANCHES AND SHALL PROVIDE STAKES FOR THEM AT THEIR PROXIMATE LOCATIONS WITH STATING CLEARLY MARKED ANY CHANGE IN LOCATION THEREIN. HE SHALL BE RESPONSIBLE FOR THE CORRECTNESS OF HIS REPRESENTATIONS. PROVIDE STAKES OF THE PROPERTY LINE OR PROPERTY LINE PRODUCTION. AT RIGHT ANGLES TO THE CENTER LINE AT THE CENTER LINE OF EACH STRUCTURE. NO SAVINGS SHALL BE MADE IN THESE PLANS WITHOUT APPROVAL OF THE COUNTY ENGINEER.

**PROFILE ALIGNMENT AND GRADE OF  
SANITARY SEWERS  
TO BE CONSTRUCTED IN  
DEL MAR AVENUE  
BETWEEN HIGHCLIFF AVE & GRAVES AVE.**

PRIVATE CONTRACT No. 1736  
W.S. 36  
SHEET 1 OF 1 SHEETS  
SCALE: VERT. 1" = 4'  
HORIZ. 1" = 40'  
APRIL 1951  
PREPARED IN THE OFFICES OF  
**TED M. WALSH**

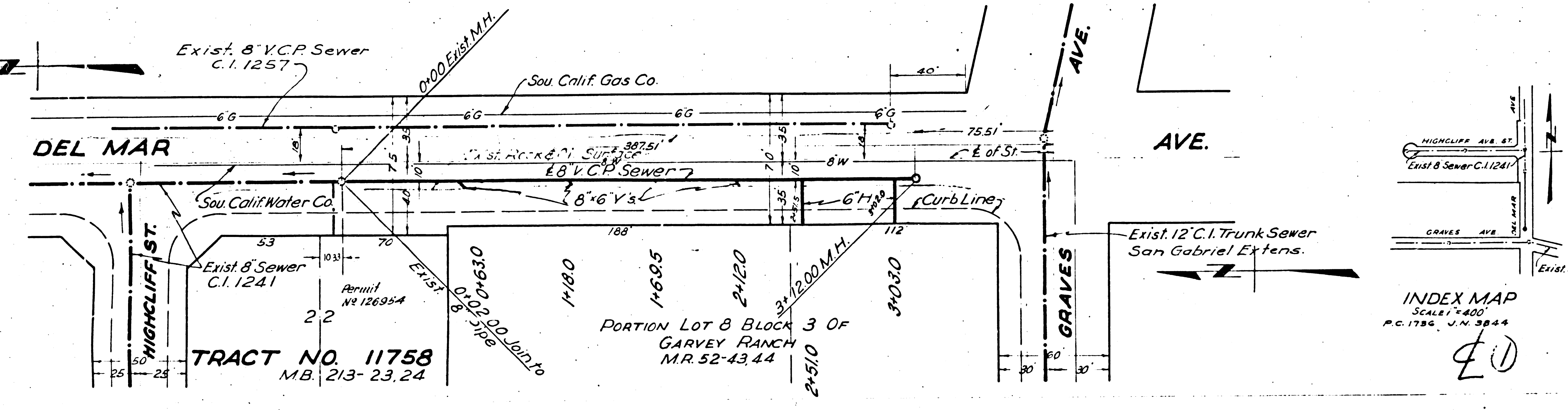
NOTE: Stoppers to be installed with joint compound by manufacturer at his plant. Specs. Sec. 35, 48. Concrete Pavement to be cut not less than 2" in depth with Concrete Saw. Specs. Sec. 65.

**FOR LEGEND**

THIS PLAN AND SPECIFICATIONS TO BE CONSTRUCTED ARE HEREBY APPROVED AND AUTHORIZED BY THE BOARD OF SUPERVISORS OF THE COUNTY OF LOS ANGELES, CALIFORNIA.

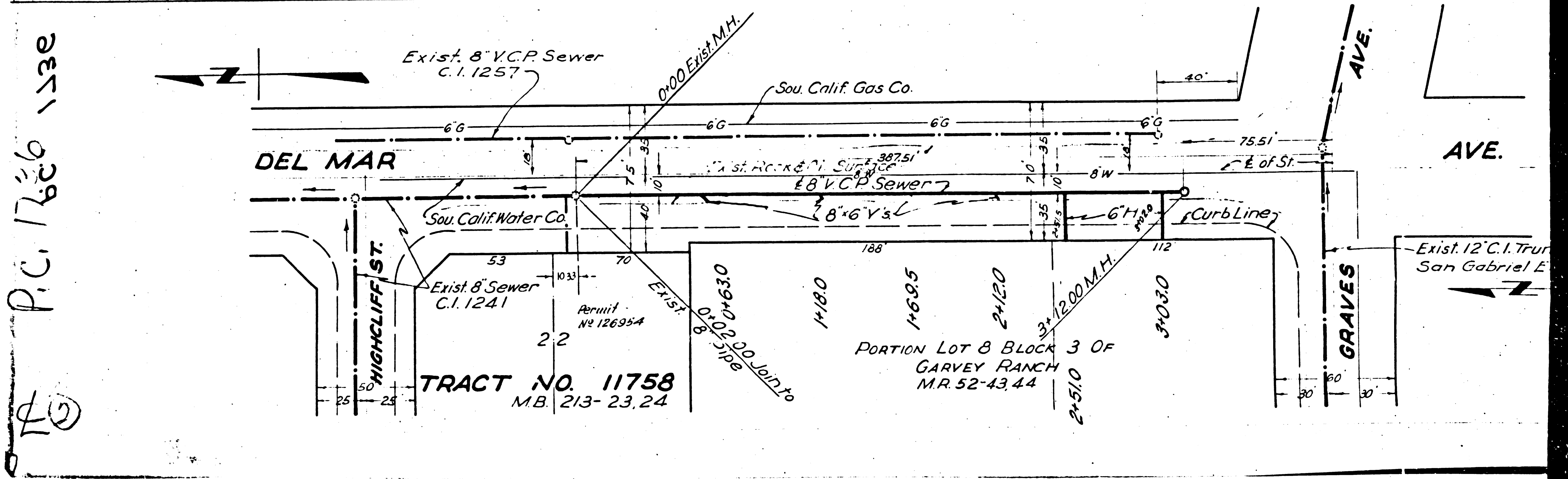
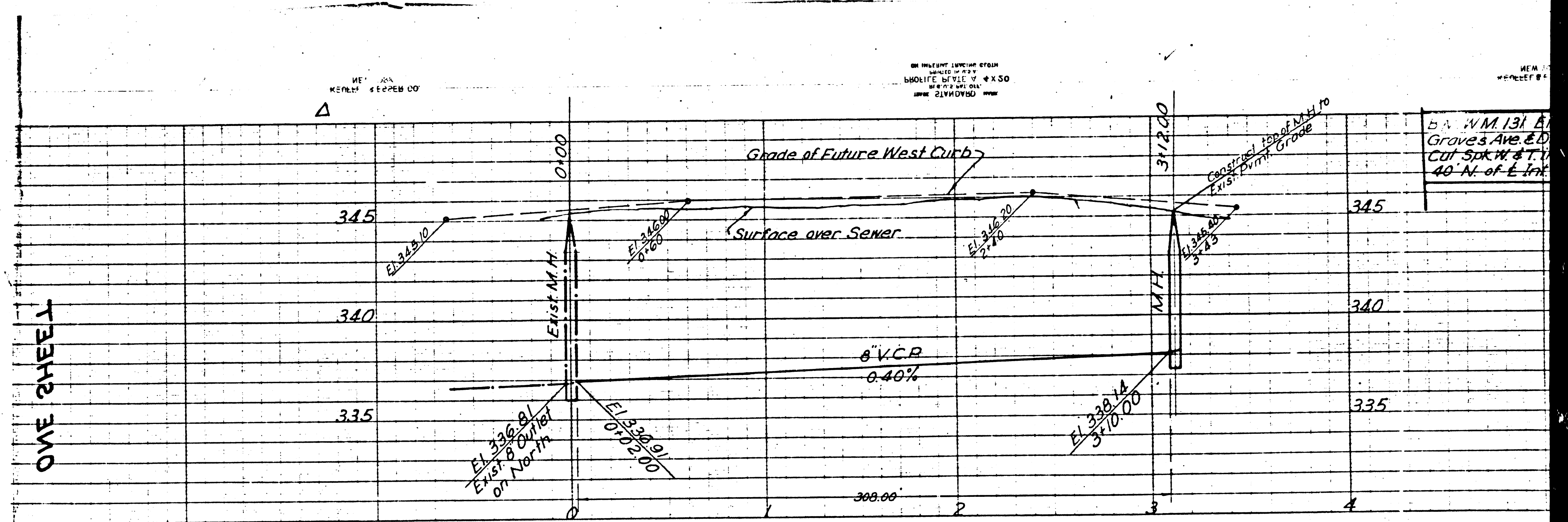
APPROVED: *[Signature]* Office Engineer  
APPROVED: *[Signature]*  
FORWARDED: *[Signature]* 9-25-51  
OFFICE OF COUNTY ENGINEER, S. E. 7860

MAY 1 1951



SHEET 1 OF 1 SHEETS

8821



P.C. 1766 1238

170

b. s. WM 131 A  
Groves Ave E.D.  
Cut Sp. W. & T.Y.  
40' N. of E. Int.

Exist. 12\"/>

**TRACT NO. 11758**  
M.B. 213-23,24

PORTION LOT 8 BLOCK 3 OF  
GARVEY RANCH  
M.R. 52-43,44