

L.A. Co. Road Map B.N.C. 7.0.3.30-111
 Elev. 136.30 Sheila St. Eastland Ave.
 N.M. Cont. N.E.E. of 24, 27, & 3 of Mendoc. R.

(12,778)

PROFILE, ALIGNMENT AND GRADE OF
SANITARY SEWERS
 TO BE CONSTRUCTED IN
PRIVATE PROPERTY OF CERTIFIED GROGERS
 SOUTH OF SHEILA ST. AND WEST OF EASTLAND AVE.

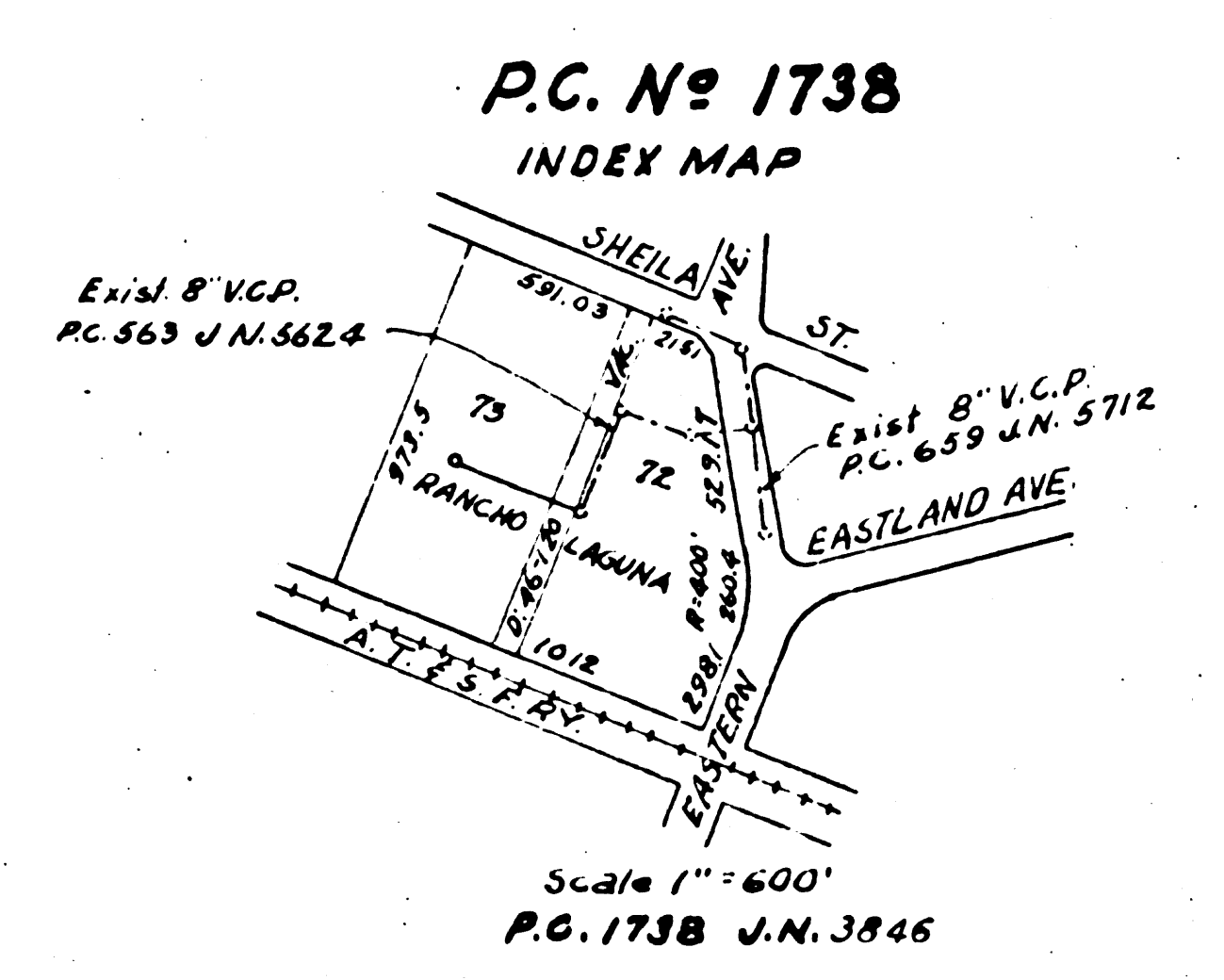
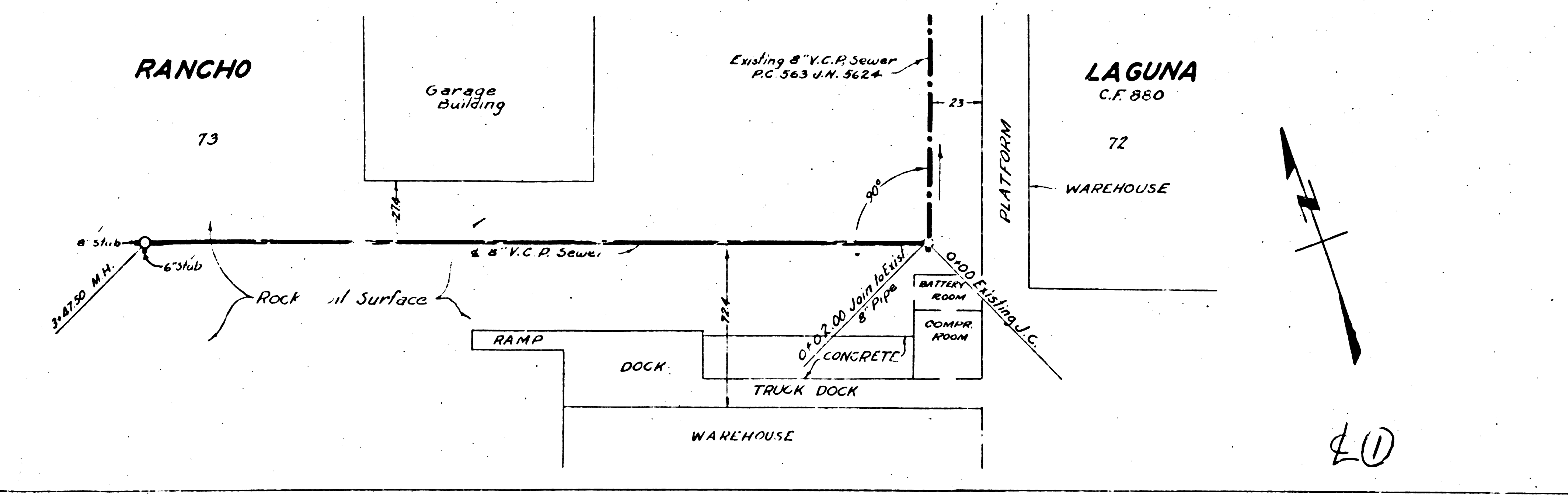
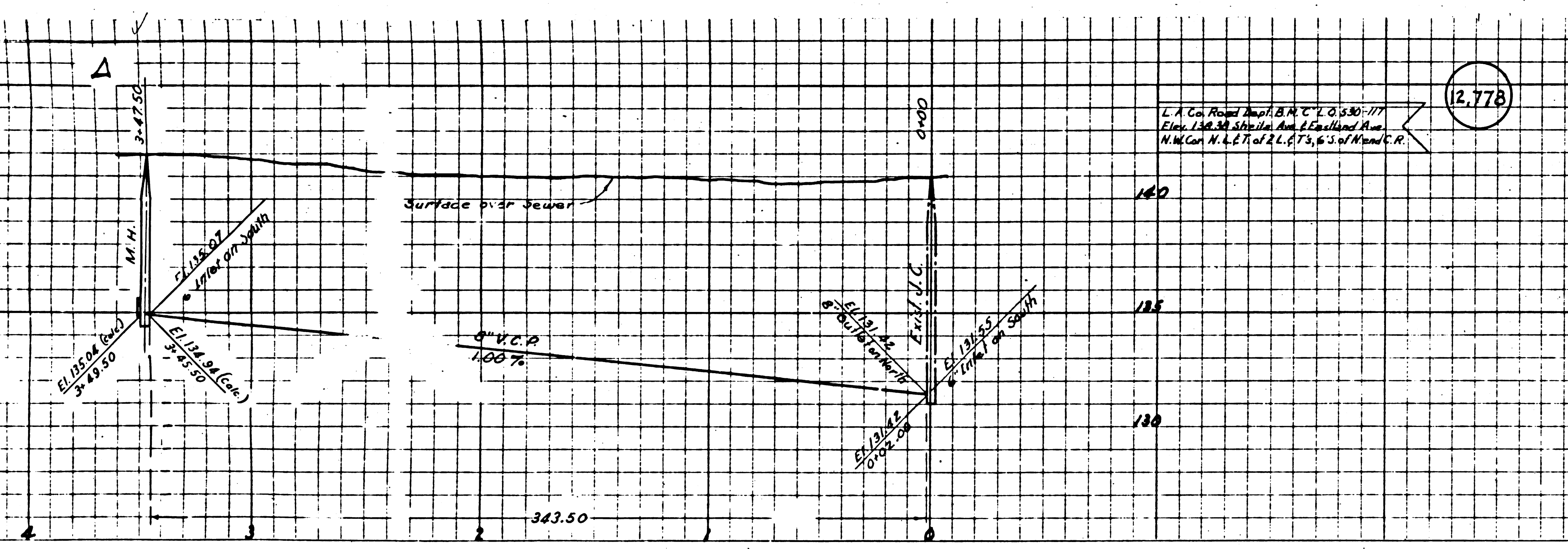
PRIVATE CONTRACT N^o 1738
 W.S. 36
 ONE SHEET

APRIL, 1951

PREPARED IN THE OFFICES OF
EVERETT A. PHILIPS
 BY: *Everett A. Philips* N.S.C.E. N^o 7922

- NOTE:
1. USE STANDARD HARBOR, FRAMES AND COVERS, ETC.
 2. USE STANDARD STRENGTH PIPE EXCEPT AS NOTED.
 3. USE STANDARD JOINTS EXCEPT AS NOTED.
 4. RECONSTRUCT ALL TRENCHES WITH IMPROVED ADJACENT TO HIGHWAY OR COUNTY ROAD DEPARTMENT OR CALIFORNIA STATE HIGHWAY DEPARTMENT, ACCORDING TO PERMIT.
 5. LOCATE FOUR FEET PLAT OF GRADE AT POINTS OF INTERFERENCE WITH POLES AS PER CASE.
 6. ALL STRUCTURES SHALL BE BRICK OR CONCRETE STRUCTURES.
- NOTE:
- NO REPRESENTATIVE OF THE COUNTY ENGINEER WILL BE ON SITE OR LAZY AND PORTION OF THE WORK.
- NO REVISIONS SHALL BE MADE IN THESE PLANS WITHOUT APPROVAL OF THE COUNTY ENGINEER.
- STOPPERS TO BE INSTALLED WITH JOINTS COMPOUND BY MANUFACTURER AT HIS PLANT. SPEC. SEE 33.46.
- CONCRETE PAVEMENT TO BE CUT, NOT LESS THAN 2" IN DEPTH WITH CONCRETE. SAW. 1200'S. 100'S.

SCALE: VERT. 1" = 4'
 HORIZ. 1" = 40'



NOTE:

ELEVATIONS ARE IN FEET UNLESS OTHERWISE NOTED.

THIS DRAWING AND THE DATA HEREON SHALL BE MADE A PART OF THE SPECIFICATIONS.

WORK SHALL BE LIMITED TO THE EXTENT OF THE PROJECT AS SHOWN ON THE PLANS OF THE COUNTY ENGINEER AND SHALL BE SUBJECT TO THE INSPECTION AND CONTROL OF THE COUNTY ENGINEER.

BEFORE WORK CAN BE STARTED, THE CONTRACTOR MUST OBTAIN A PERMIT TO EXCAVATE IN QUANTITY FROM THE COUNTY ENGINEER. THE CONTRACTOR SHALL OBTAIN A PERMIT TO EXCAVATE FROM THE COUNTY ENGINEER AND SHALL OBTAIN A PERMIT TO EXCAVATE FROM THE COUNTY ENGINEER.

IF WORK IS TO BE DONE IN A STATE HIGHWAY, A PERMIT MUST BE OBTAINED FROM THE STATE OF CALIFORNIA, DIVISION OF HIGHWAYS, BEFORE WORK CAN BE STARTED.

APPROVAL OF THIS PLAN BY THE COUNTY ENGINEER DOES NOT CONSTITUTE A REPRESENTATION AS TO THE ACCURACY OF THE DATA OR THE FEASIBILITY OR THE LAIENDE OF ANY UNDERGROUND STRUCTURE EXISTING WITHIN THE LIMITS OF THIS PROJECT.

APR 26 1951

COUNTY OF LOS ANGELES, CALIFORNIA

APPROVED: *Everett A. Philips*
 COUNTY ENGINEER

APPROVED: *W. B. BASH*
 CHIEF ENGINEER OF COUNTY SANITATION DISTRICT NO. 2

BY: *Everett A. Philips*
 OFFICE ENGINEER

CHECKED: *W. B. BASH*
 OFFICE OF COUNTY ENGINEER D. E. NO. 7922