

12,062

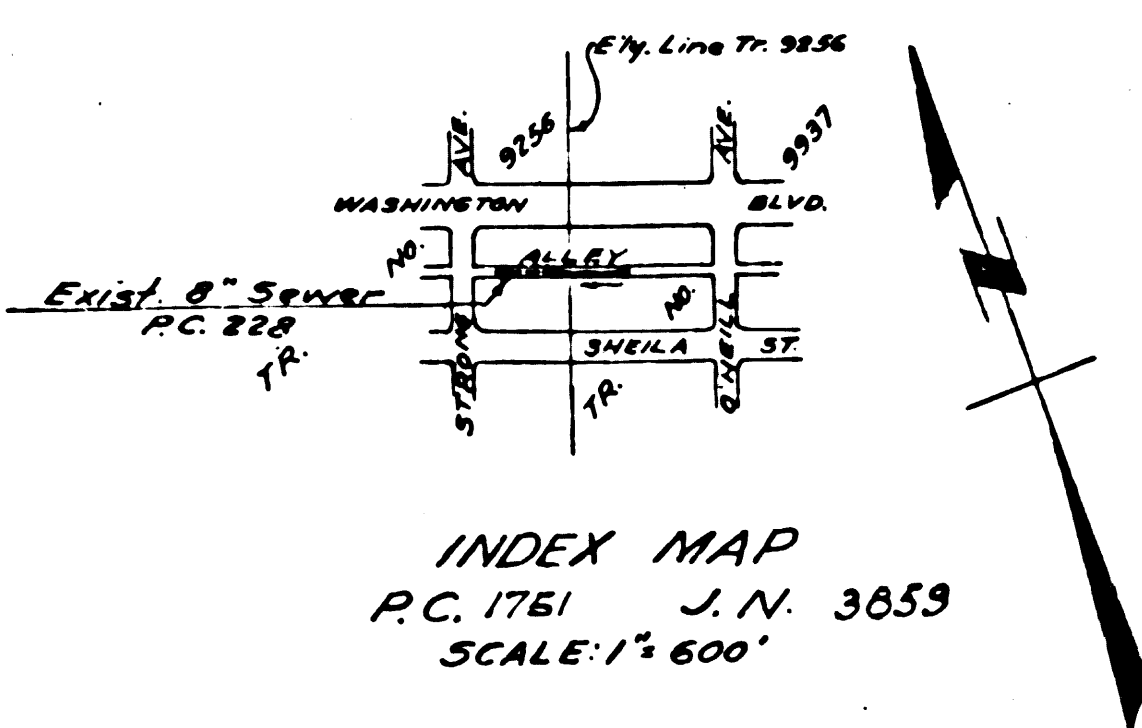
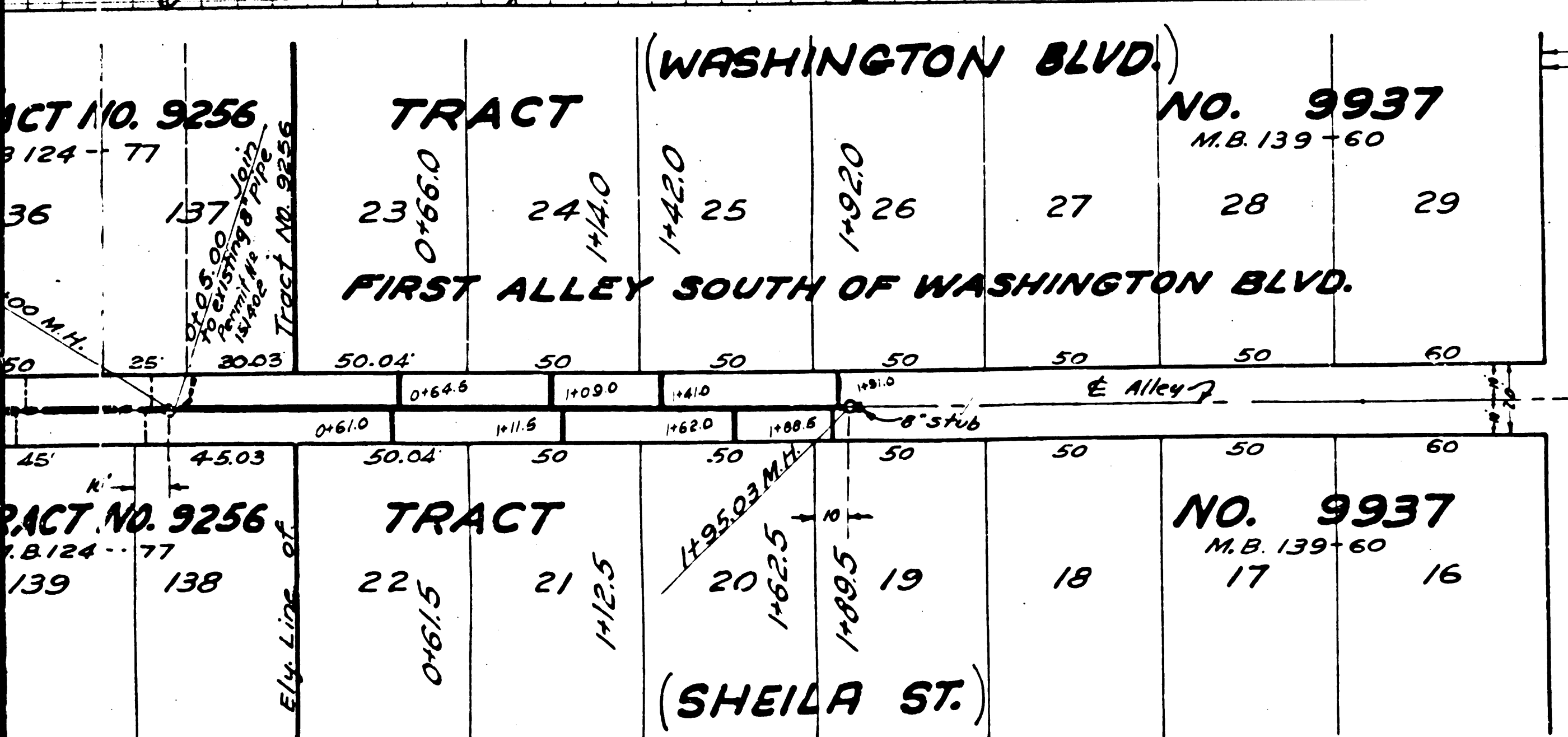
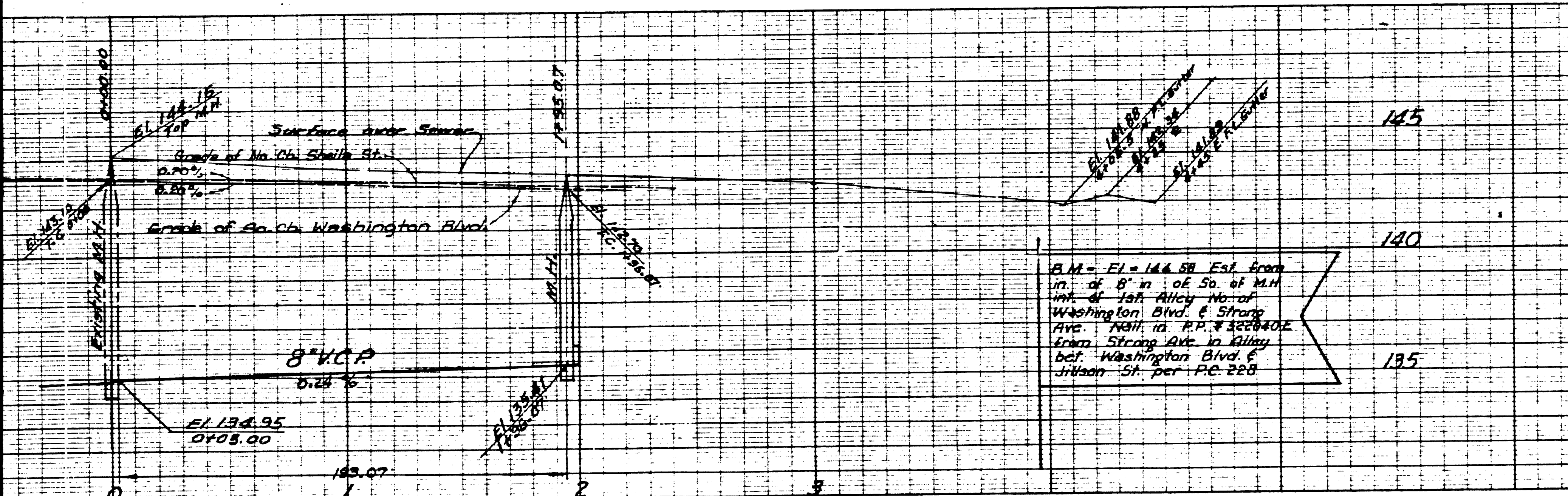
- (1) USE STANDARD MANHOLE FRAME AND COVER S-6-117
- (2) USE STANDARD STRENGTH PIPE
- (3) USE CEMENT MORTAR FOR ALL VITRIFIED CLAY PIPE JOINTS
- (4) RESURFACE ALL TRENCH WITHIN IMPAVED AREA TO MEET LOS ANGELES COUNTY ROAD DEPT REQUIREMENTS IN ACCORDANCE WITH THE PERMIT
- (5) CONSTRUCT HOUSE CONNECTIONS WITH INVERT AT PROPERTY LINE 6 FEET BELOW GRADE OF So. Ch. Washington Blvd.
- (6) ENCASE FOUR FEET OF SEWER AT POINTS OF INTERFERENCE WITH POLES AS PER S-6-718
- (7) ALL STRUCTURES SHALL BE BRICK SEWER STRUCTURES 5'-0" DIA
- (8) CONSTRUCT TOP OF ALL STRUCTURES IN RIGHTS OF WAY 6" ABOVE FINISHED GRADE.

NOTE: The representation of the County Engineer will survey or lay out any portion of the work. The owner or his authorized representative shall furnish the County Engineer with grade sheets and stations of all house connections and Y branches and shall provide stakes for them at proper locations with stationing plainly marked. Any change of location shall be requested in writing by the owner or his representative. No alterations shall be made in cross-sections without approval of the County Engineer.

NOTE: Provide stakes on the property lines or property lines produced at right angles to the sewer line at the center line of each manhole. Concrete pavement to be put out 2' in depth with concrete per Spec. Sec. 60. Gradients to be established with joint compound by Manufacturer at this point. Spec. Sec. 33.4B.

PROFILE ALIGNMENT AND GRADE OF  
SANITARY SEWERS  
TO BE CONSTRUCTED IN  
FIRST ALLEY SOUTH OF WASHINGTON BLVD.  
IN TRACT NO. 9256 M.B. 124-77  
AND  
TRACT NO. 9937 M.B. 139-60  
PRIVATE CONTRACT NO. 1751  
W.S. 36  
SHEET 1 OF 1 SHEET  
April 1951  
PREPARED IN THE OFFICES OF  
W.M. H. FAIR, JR.  
BY *Edmund Egan*  
REG. C.E. NO. 5828

SCALE VERT. 1" = 4'  
SCALE HORIZ. 1" = 40'



FOR LEGEND  
SEE PLANO. S-6-68

NOTE:  
Grades to which this improvement is to be constructed are shown on Plans and Profile. Grade points for top of curb, center line of street or center line of alley are shown by circles on profiles. At all points between designated points the grade shall be established so as to conform to a straight line drawn between said designated points. Elevations are in feet above U.S. Datum or Mean Sea Level.

This drawing and the data hereon are hereby made a part of the specifications. Work shall be constructed according to specifications on file in the office of the County Engineer and shall be prosecuted only in the presence of the County Engineer. Before work can be started the Contractor must obtain a permit to excavate in County Streets from the L.A. County Road Dept. 211 So. Main Street, and make a deposit with the County Engineer, 320 L.A. County Engineering Bldg., sufficient to cover the cost of construction, inspection, and record plans.

If work is to be done on a State Highway, a permit must be obtained from the State of California, Division of Highways, 120 S. Spring St., after making the deposit with the County Engineer.

Approval of this Plan by the County of Los Angeles does not constitute a representation as to the accuracy of the location of or the existence or non-existence of any underground utility, pipe or structure within the limits of this project.

COUNTY OF LOS ANGELES, CALIFORNIA  
APPROVED: *Edmund Egan* COUNTY ENGINEER  
APPROVED BY: *W.M. H. Fair, Jr.* OFFICE ENGINEER  
SANITATION DISTRICT NO. 2.

CHECKED BY: *H.L. Parker* S-4-1951  
OFFICE OF COUNTY ENGINEER  
REG. C.E. NO. 647L

PLAN NO. 1241  
 PLAN NO. 1393  
 10 VERT. TO SHEET 1241  
 24 1/2 1 1/2 1 1/2  
 1 1/2