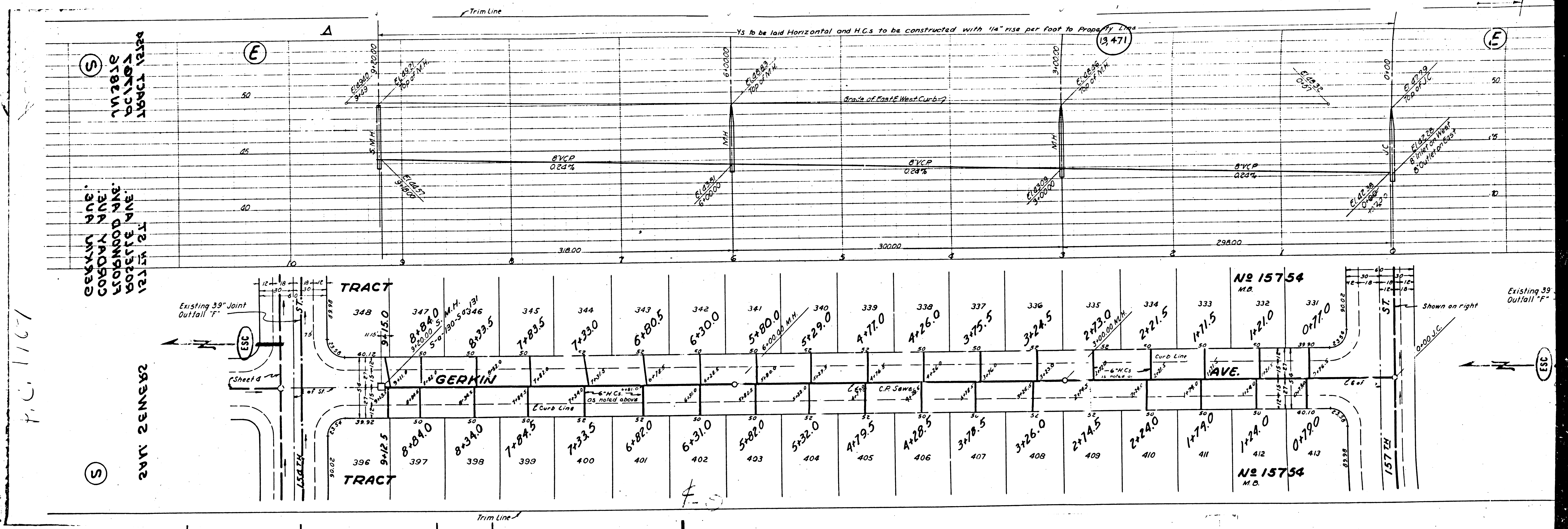


②



P.C. 1167

GERKIN AVE.
 COBURN AVE.
 WOODMAN AVE.
 BOZELLE AVE.
 TRACY AVE.

GERKIN AVE.
 COBURN AVE.
 WOODMAN AVE.
 BOZELLE AVE.
 TRACY AVE.

GERKIN AVE.
 COBURN AVE.
 WOODMAN AVE.
 BOZELLE AVE.
 TRACY AVE.

Existing 39" Joint
 Outfall "F"

Sheet 4

Existing 39" Joint
 Outfall "F"

Existing 39" Outfall "F"

Shown on right

Trim Line

Ys to be laid Horizontal and H.G.s to be constructed with 1/4" rise per foot to Property Line

(13,471)

Grade of East-West Curb

No 15754
 M.D.

No 15754
 M.D.

351

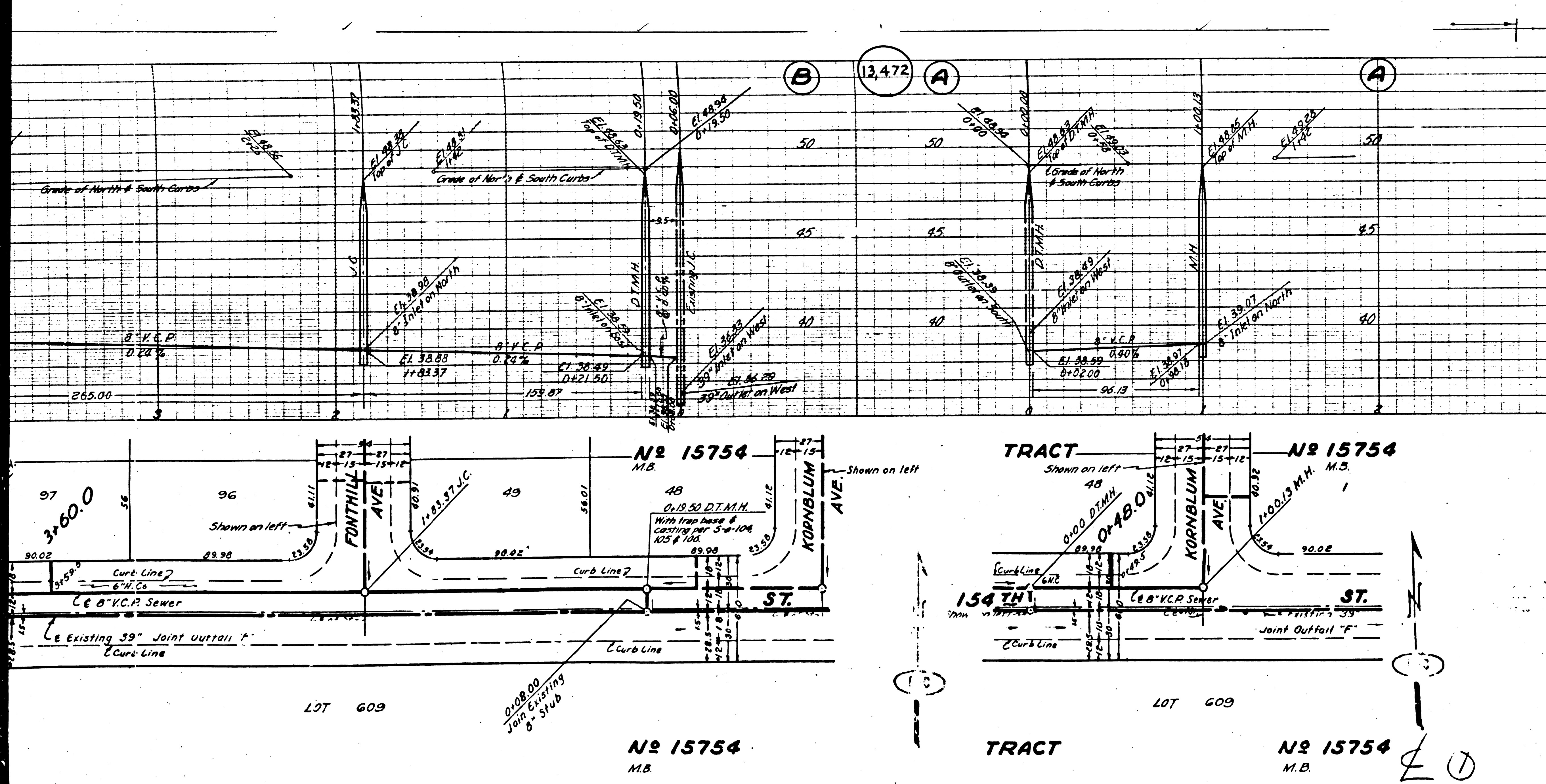
(S)

(E)

(E)

(S)

351



B.M. - 57 101 - El. 30.443 - L.S.T.
 In NW 1/4 of NW 1/4 of Intersection
 of Prairie Ave. & 154th St.

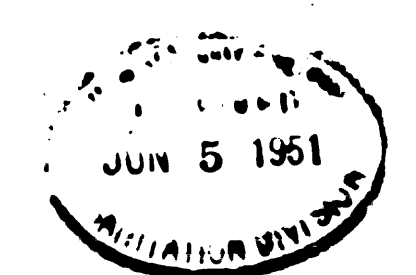
PROFILE ALIGNMENT AND GRADE OF
SANITARY SEWERS
 TO BE CONSTRUCTED IN
154TH ST.
 BETWEEN KORNBLUM AVE. & DOTY AVE.
 BETWEEN 154TH ST. & COMPTON BLVD.
 FONTHILL AVE.
 BETWEEN 154TH ST. & COMPTON BLVD.
 DOTY AVE.
 BETWEEN 154TH ST. & COMPTON BLVD.
 IN TRACT NO. 15754

PRIVATE CONTRACT NO. 1767
 W.S. 25
 SHEET 3 OF 5 SHEETS
 APRIL 1951
 PREPARED IN THE OFFICES OF
 ENGINEERING SERVICE CORPORATION

ENGINEERING SERVICE CORPORATION			
1127 N. WASHINGTON BLVD.			
DATE	DESCRIPTION	BY	CHECKED
APRIL 23 1951	DESIGNED	C.G.D.	
	DRAWN	C.G.R.	
	CHECKED	J.W.F.	
	QUANTITIES		
SCALE	DATE	BY	CHECKED
1" = 10'	APRIL 23 1951	J.W.F.	R.E. K...

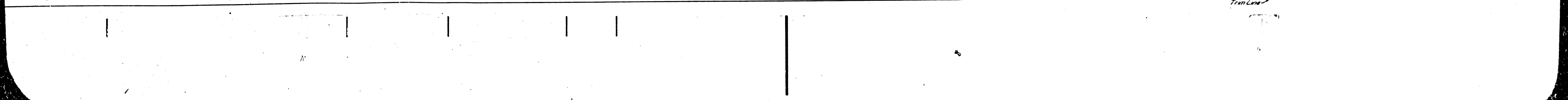
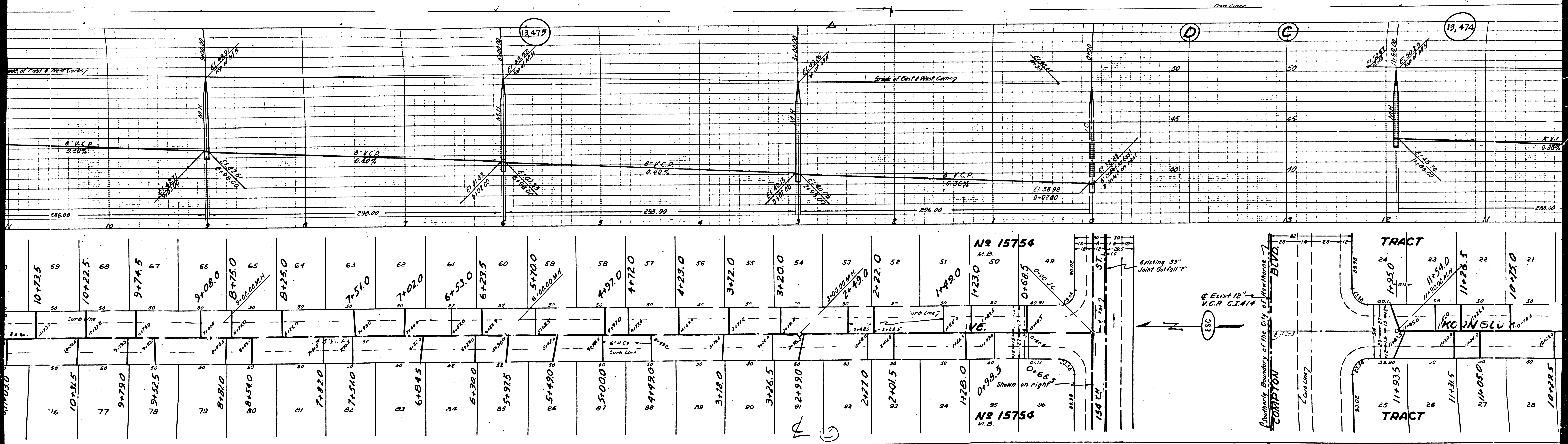
FOR LEGEND
 SEE PLAN NO. S-44
 FOR CONSTRUCTION NOTES SEE SHEET 1

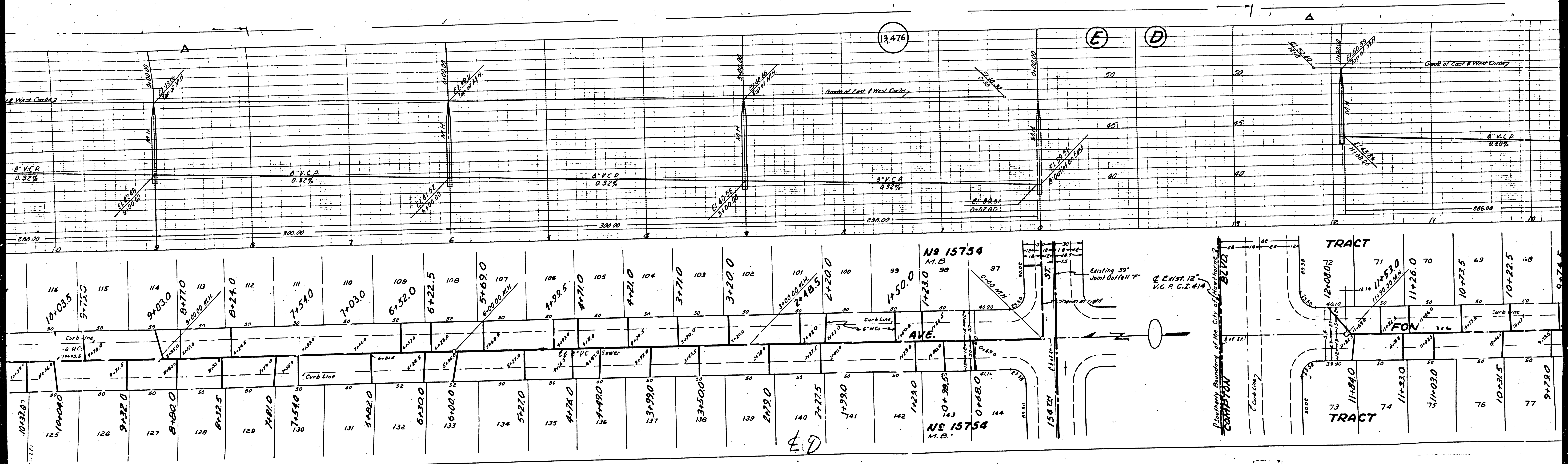
COUNTY OF LOS ANGELES, CALIFORNIA
 APPROVED: [Signature]
 COUNTY ENGINEER
 APPROVED BY: [Signature]
 OFFICE ENGINEER
 CHECKED: [Signature]
 OFFICE OF COUNTY ENGINEER, B.G. & NO. 7840



154TH ST.
 KORNBLUM AVE.
 COMPTON BLVD.
 TRACT 15754

10-25-51





13.476

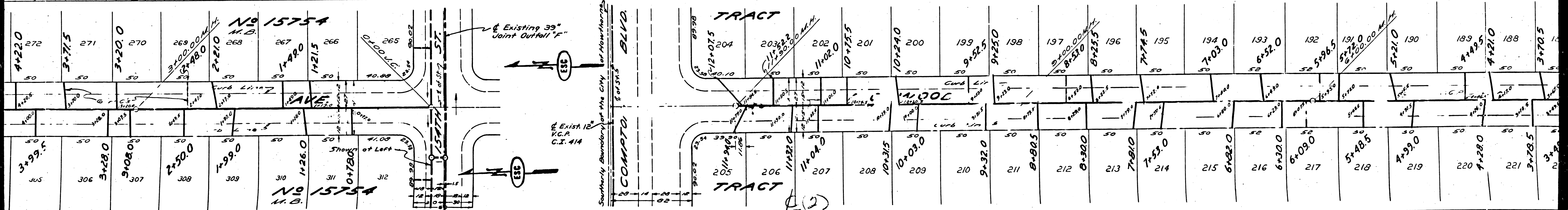
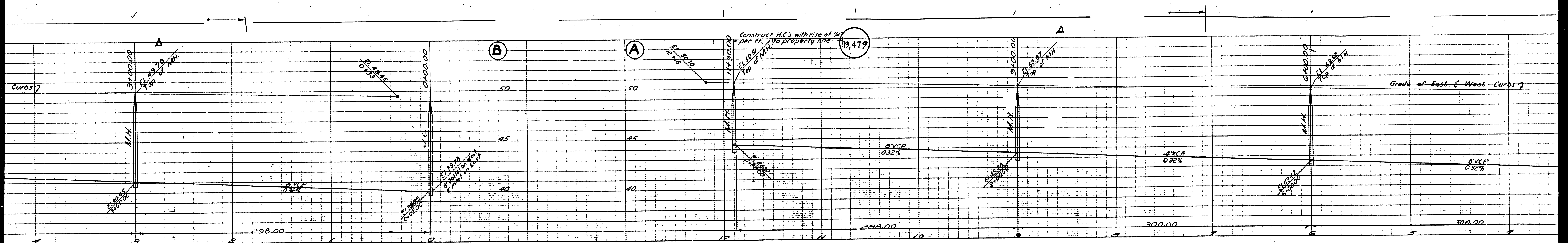
E

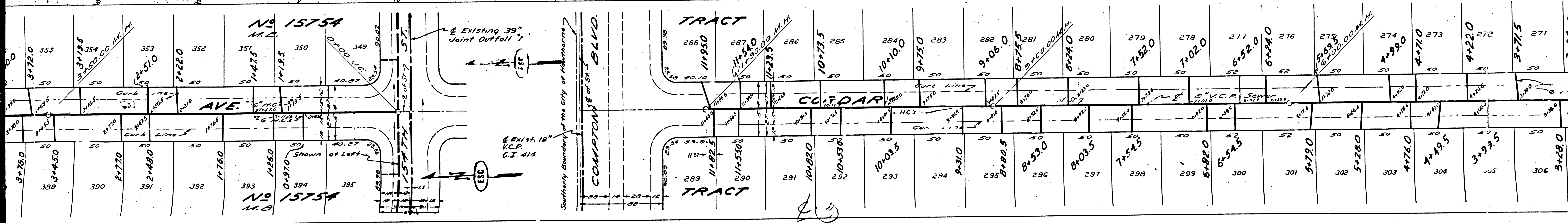
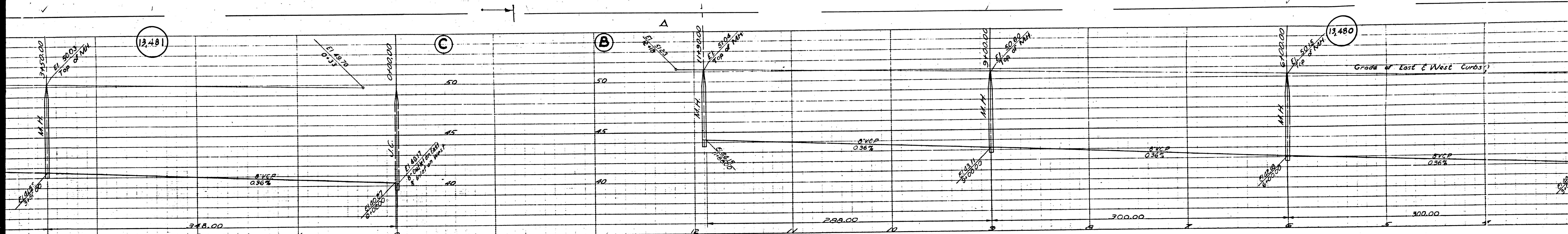
D

TRACT

TRACT

E





13,481

13,480

No 15754
M.B.

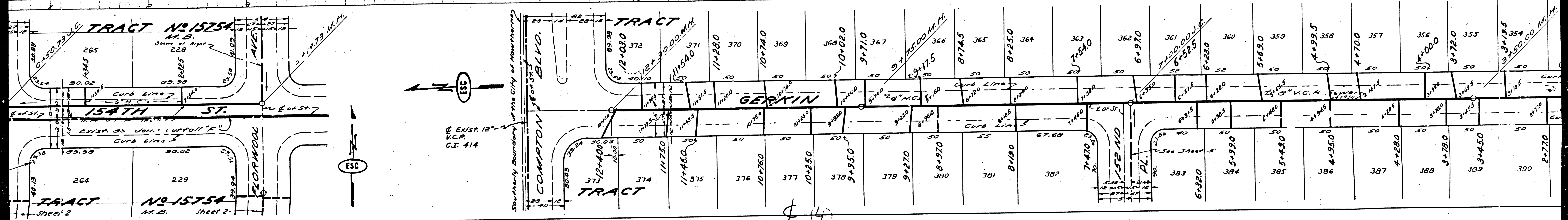
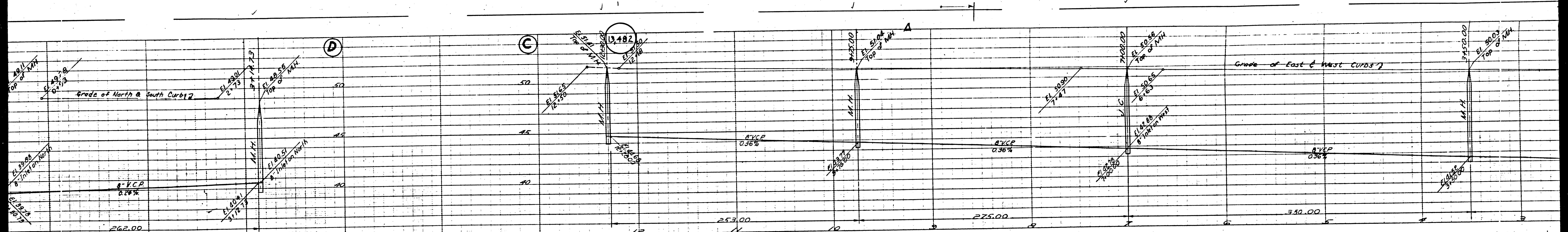
No 15754
M.B.

Southerly Boundary of the City of Baltimore
COMPTON ST. BLVD.

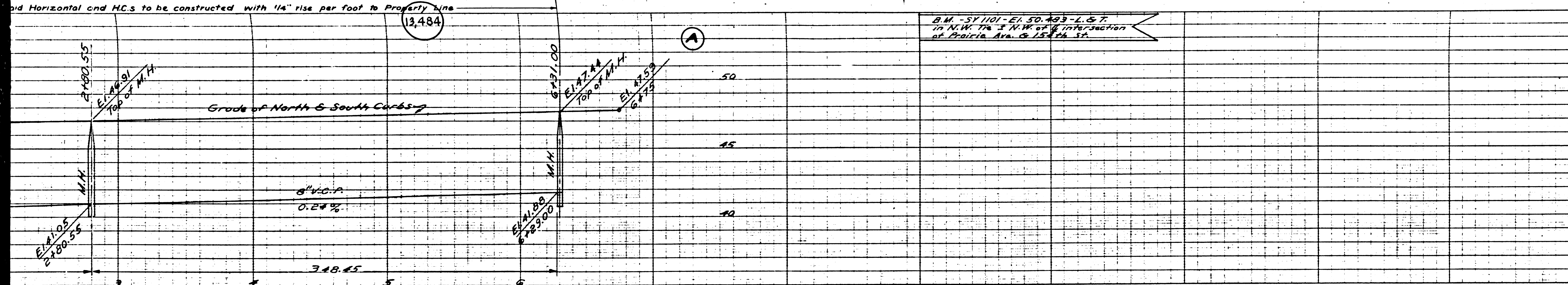
TRACT

TRACT

2



and Horizontal and H.C.s to be constructed with 1/4" rise per foot to Property Line

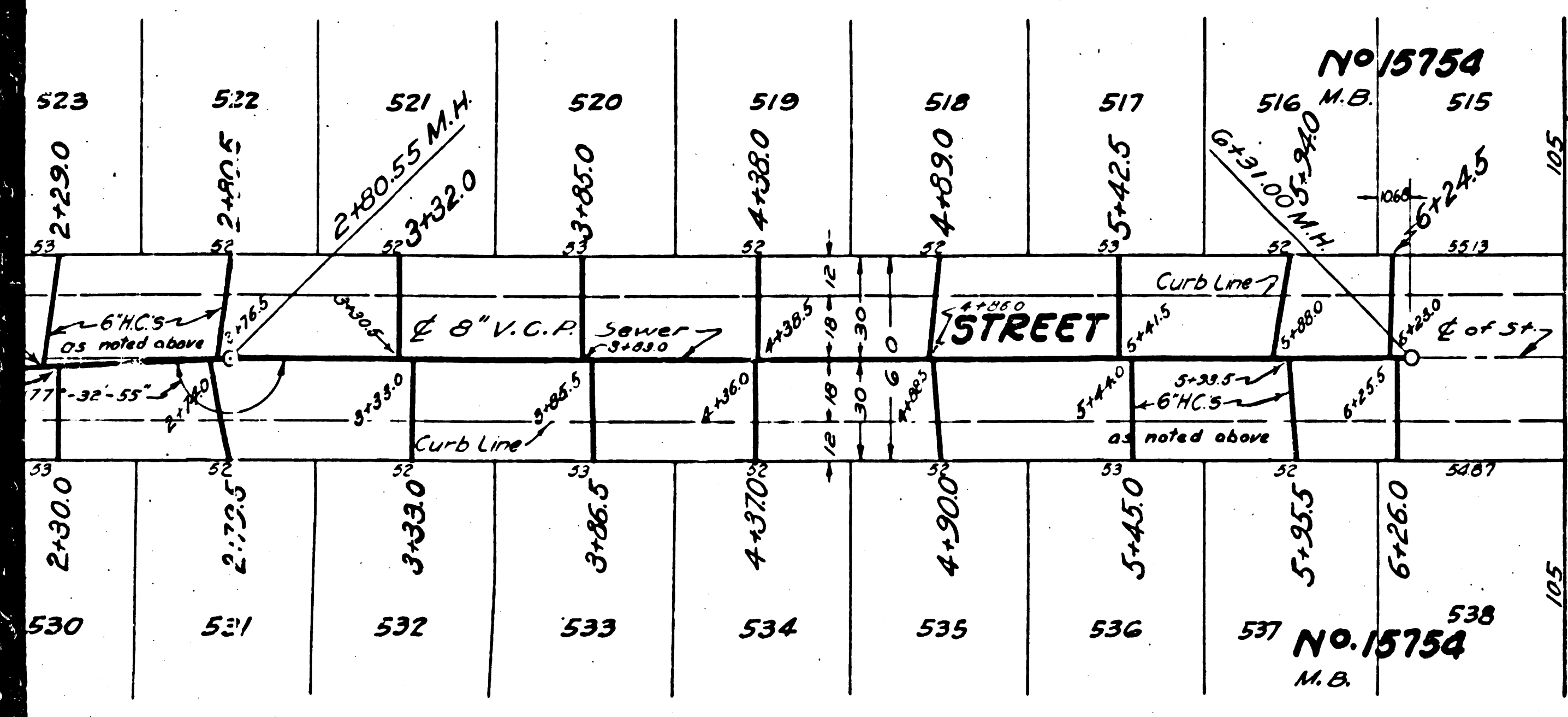


B.M. - 371101 - E.L. 50.493 - L. & F.
in N.W. 1/4 S.W. 1/4 of intersection
of Pacific Ave. & 154th St.

VERTICAL ALIGNMENT AND GRADE OF
SANITARY SEWERS
TO BE CONSTRUCTED IN
157TH STREET
BETWEEN EAST TRACT LINE & DOTY AVE.
156TH STREET
BETWEEN EAST TRACT LINE & DOTY AVE.
ROSELLE AVENUE
BETWEEN 154TH ST. & 152ND PL.
152ND PLACE
BETWEEN GERRIN AVE. & ROSELLE AVE.
PRAIRIE AVENUE
BETWEEN 154TH ST. & 310 FT. NORTHERLY
IN TRACT NO 15754

PRIVATE CONTRACT NO. 1767
W.S. 25

SHEET 5 OF 5 SHEETS
VERT. 1" = 4'
HOR. 1" = 40'
April 1951
PREPARED IN THE OFFICES OF
ENGINEERING SERVICE CORPORATION



ENGINEERING CORPORATION 1127 A WASHINGTON BLVD LOS ANGELES 15 CALIF REGISTERED		PR. 7-281	
TRACED BY... H.S.		SCALE: L B P B	
DESIG. BY... C.B.D.		7/8	
CHK. BY... J.W.F.			
SUBMITTED...			
SUB STRUCTURES CK. D. J.W.F.			
W.O. NO. 5950-3	DATE April 1951	SCALE 1" = 40'	P.B. 7/8

BY P. F. K...
116 C. L. NO. 7874

FOR LEGEND
SEE PLAN NO. 5-84

FOR CONSTRUCTION NOTES SEE SHEET 1

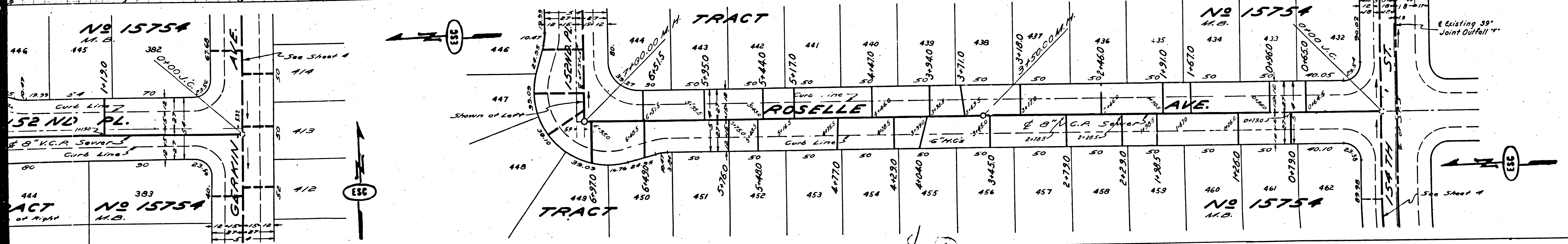
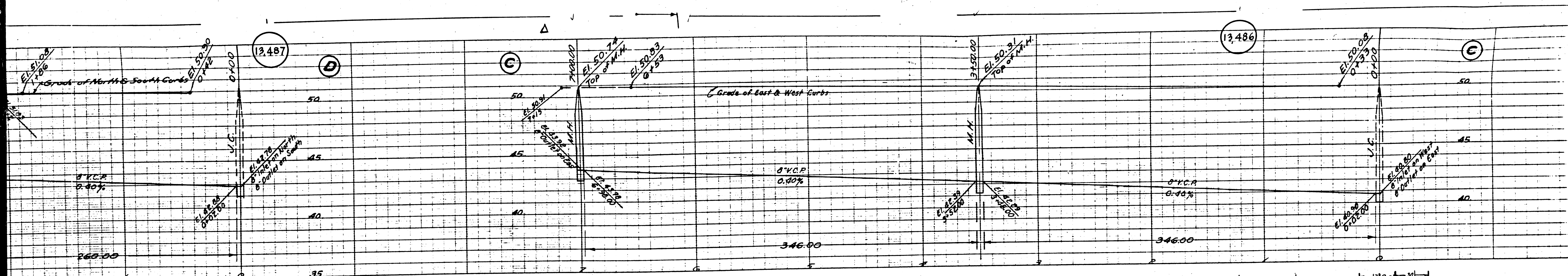
COUNTY OF LOS ANGELES, CALIFORNIA
APPROVED: Edmond
COUNTY ENGINEER
APPROVED BY: W. J. ...
OFFICE ENGINEER
CHIEF ENGINEER OF COUNTY
SANITATION DISTRICT NO. 5
CHECKED: P. E. K...
OFFICE OF COUNTY ENGINEER, 116 C. L. NO. 7860

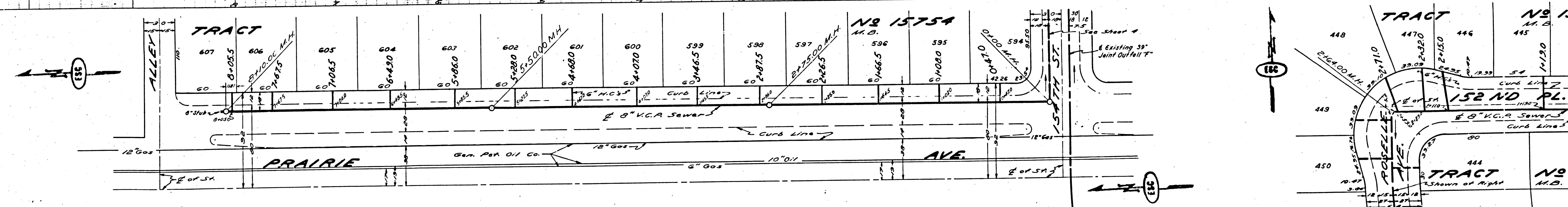
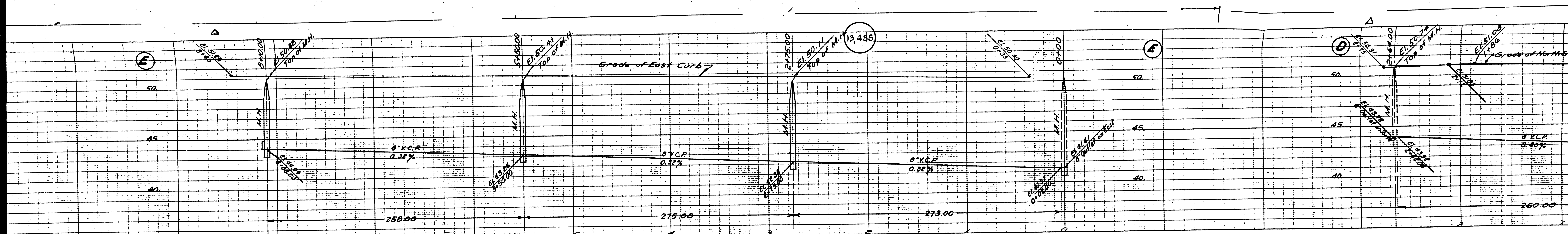
JUN 5 1951

157TH STREET
156TH STREET
ROSELLE AVE.
152ND PLACE
PRAIRIE AVE.
TRACT NO 15754

6/21/51-25-51

7/2/51





②