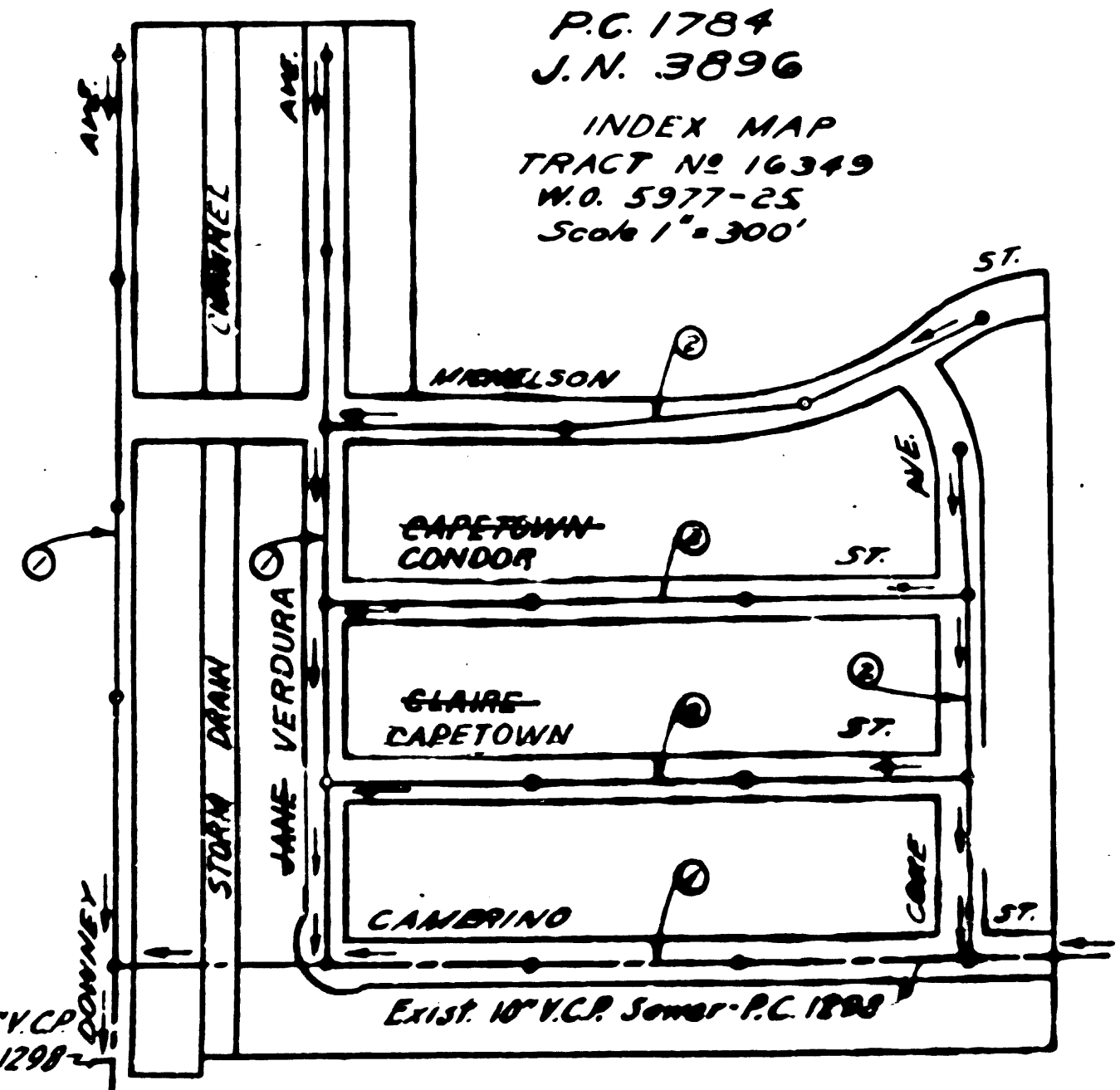
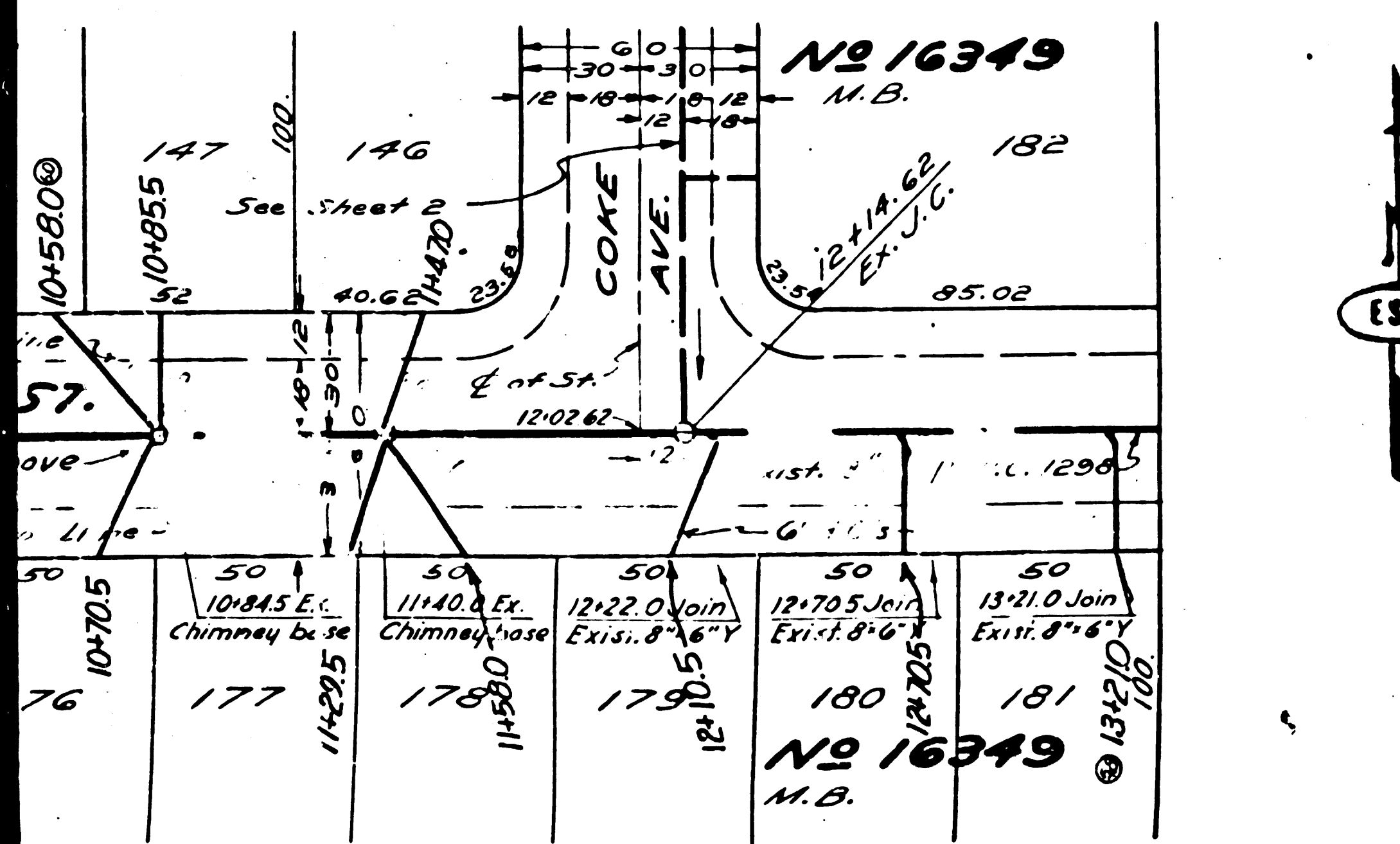


DM-LA Co. P.C. No. 120-170 El. 4287'
 3 W. Cor. Del Amo Blvd. & Clarke Ave.
 Brass cap in South curb of Del Amo Blvd. 5' W. West of curb return.

15,096

- NOTE:
 NO REPRESENTATIVE OF THE COUNTY ENGINEER WILL SURVEY OR LAY OUT ANY PORTION OF THE WORK.
 THE OWNER OR HIS AUTHORIZED REPRESENTATIVE SHALL FURNISH THE COUNTY ENGINEER WITH GRADE SHEETS AND STATIONS FOR ALL HOUSE CONNECTIONS AND Y BRANCHES AND SHALL PROVIDE STAKES FOR THEM AT THEIR PROPER LOCATIONS WITH STATIONING PLAINLY MARKED. ANY CHANGE OF LOCATION SHALL BE REQUESTED IN WRITING BY THE OWNER OR HIS REPRESENTATIVE.
 NO REVISIONS SHALL BE MADE IN THESE PLANS WITHOUT APPROVAL OF THE COUNTY ENGINEER.
1. USE STANDARD STRENGTH PIPE EXCEPT AS NOTED.
 2. USE STANDARD STRENGTH PIPE EXCEPT AS NOTED.
 3. USE CEMENT MORTAR FOR ALL VITRIFIED CLAY PIPE JOINTS.
 4. ASSURANCE ALL TRENCH WITHIN PAVED AREA TO MEET L.A. COUNTY ROAD DEPT. REQUIREMENTS.
 5. ENCASE FOUR FEET OF SEWER AT POINTS OF INTERFERENCE WITH POLES, 5'-11 1/2".
 6. HOUSE CONNECTIONS TO BE CONSTRUCTED WITH INVERT AT PROPERTY LINE 5 FEET BELOW CURB GRADE EXCEPT AS NOTED.
 7. ALL STRUCTURES SHALL BE BRICK SEWER STRUCTURES, 5'-10".
 8. PROVIDE STAKES ON THE PROPERTY LINES OR PROPERTY LINES EXTENDED AT RIGHT ANGLES TO THE SEWER LINE AT THE CENTER LINE OF EACH MANHOLE.
 9. STAKES TO BE INSTALLED WITH JOINT COMPOUND BY MANUFACTURER AT HIS PLANT. SPEC'S SEC. 33.1.10
 10. CONCRETE PAVEMENT TO BE CUT NOT LESS THAN 6" IN DEPTH WITH CONCRETE SAW. SPEC'S SEC. 65

PROFILE, ALIGNMENT AND GRADE OF
SANITARY SEWERS
 TO BE CONSTRUCTED IN
CAMERINO ST.
 BETWEEN DOWNEY AVE. & COKE ST.
DOWNEY AVE.
 BETWEEN SOUTH TRACT LINE & NORTH TRACT LINE
~~VERDURA AVE.~~
 BETWEEN CAMERINO ST. & NORTH TRACT LINE
 IN TRACT NO. 16349
 PRIVATE CONTRACT NO. 1784
 W.S. 32
 SHEET 1 OF 2 SHEETS
 SCALE: VERT. 1" = 4'
 HOR. 1" = 40'
 APRIL 1951
 PREPARED IN THE OFFICES OF
ENGINEERING SERVICE CORPORATION



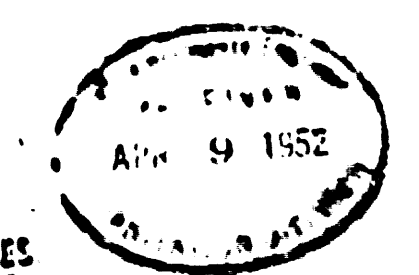
Sewer Grades in Downey Ave.
 revised to provide deeper sewer
 Revision Approved: *Richard E. Kuhn* 3-18-52
 Office of County Engineer - Reg. C.E. 7860

ENGINEERING SERVICE CORPORATION	
1127 W WASHINGTON BLVD.	
LOS ANGELES 15 CALIF. PR. 7261	
REVISIONS	TRACED BY <i>H.S.</i>
	DESIG. BY <i>C.G.D.</i>
	CK'D BY <i>J.W.F.</i>
	SUBMITTED: <i>ML</i>
SUB STRUCTURES CK'D	
W. O. NO.	DATE
5377-25	April 1951

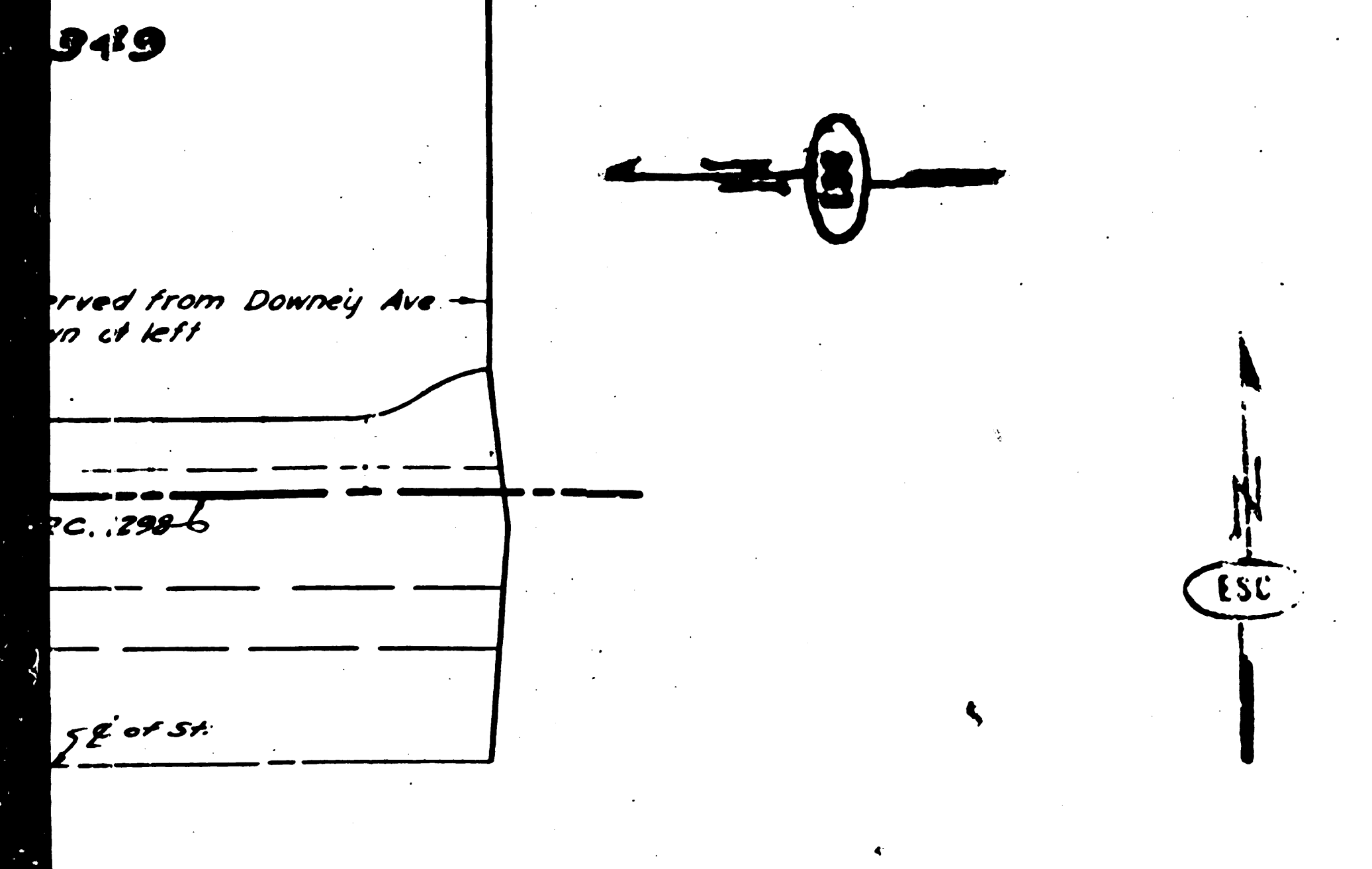
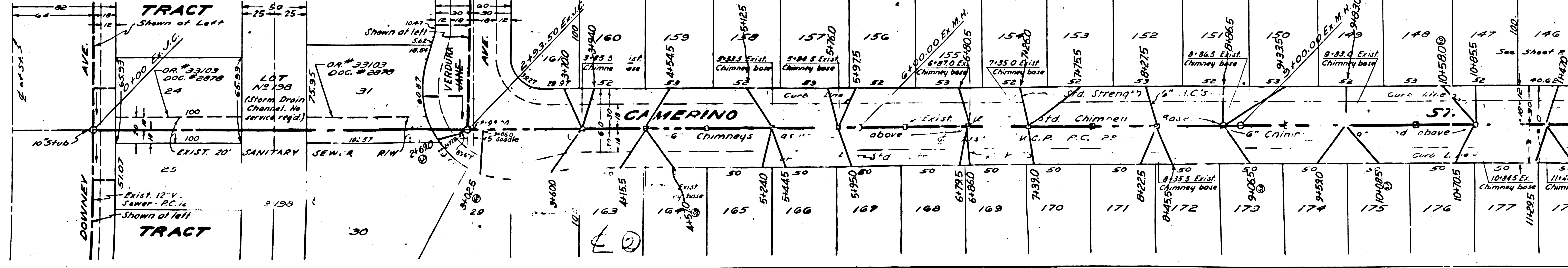
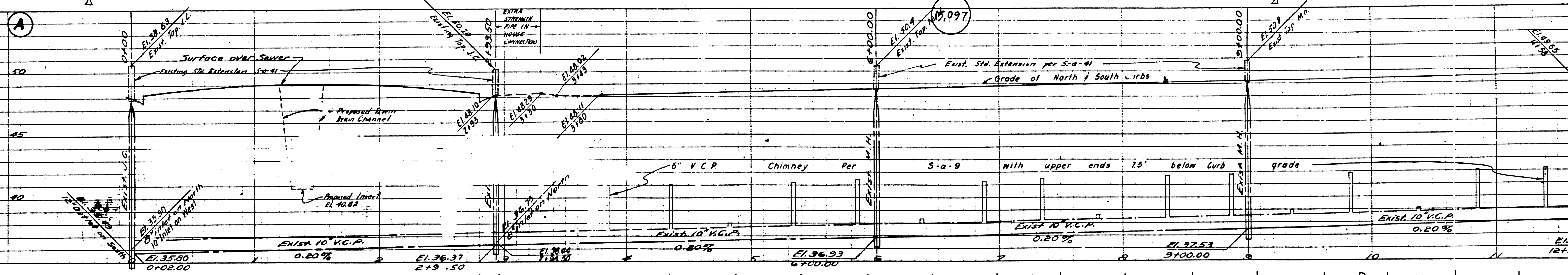
NOTE:
 GRADES TO WHICH THIS IMPROVEMENT IS TO BE CONSTRUCTED ARE SHOWN ON PLANS AND PROFILES. GRADES FOR TOP OF CURB, CENTER LINE OF STREETS OR CENTER LINE OF ALLEYS ARE SHOWN BY CIRCLES ON PROFILES. AT ALL POINTS BETWEEN DESIGNATED POINTS THE GRADE SHALL BE ESTABLISHED AS TO CONFORM TO A STRAIGHT LINE DRAWN BETWEEN THE DESIGNATED POINTS.
 ELEVATIONS ARE IN FEET ABOVE U. S. G. S. DATUM OR OTHER SEA LEVEL.
 THIS DRAWING AND THE DATA HEREON ARE HEREBY MADE A PART OF THE SPECIFICATIONS.
 WORK SHALL BE CONSTRUCTED ACCORDING TO SPECIFICATIONS SET FORTH IN THE OFFICE OF THE COUNTY ENGINEER AND SHALL BE PROSECUTED ONLY IN THE PRESENCE OF THE COUNTY ENGINEER.
 BEFORE WORK CAN BE STARTED THE CONTRACTOR MUST OBTAIN A PERMIT TO EXCAVATE IN COUNTY ENGINEER'S OFFICE FROM THE L.A. COUNTY ROAD DEPT. 211 SO MAIN ST. AND MAKE A DEPOSIT WITH THE COUNTY ENGINEER THE COUNTY ENGINEERING BUILDING SUFFICIENT TO COVER THE COST OF CONSTRUCTION BY SECTION AND RECORD PLANS.
 APPROVAL OF THIS PLAN BY THE COUNTY OF LOS ANGELES DOES NOT CONSTITUTE A REPRESENTATION AS TO THE ACCURACY OF THE LOCATION OF, OR THE EXISTENCE OF, ANY UTILITIES OR STRUCTURES BELOW GROUND UNLESS, PIPE OR STRUCTURE WITHIN THE LIMITS OF THIS PROJECT, THIS NOTICE APPEARS ON THE SHEETS.
 COUNTY OF LOS ANGELES, CALIFORNIA

Before breaking into any existing structure
 and before final acceptance of this work
 County Sanitation District should be notified
 in order that required inspection may be made

APPROVED: *Richard E. Kuhn*
 COUNTY ENGINEER
 OFFICE ENGINEER
 COUNTY ENGINEER
 COUNTY ENGINEER



48117
 151098
 151198
 151298
 151398
 151498
 151598
 151698
 151798
 151898
 151998
 152098
 152198
 152298
 152398
 152498
 152598
 152698
 152798
 152898
 152998
 153098
 153198
 153298
 153398
 153498
 153598
 153698
 153798
 153898
 153998
 154098
 154198
 154298
 154398
 154498
 154598
 154698
 154798
 154898
 154998
 155098
 155198
 155298
 155398
 155498
 155598
 155698
 155798
 155898
 155998
 156098
 156198
 156298
 156398
 156498
 156598
 156698
 156798
 156898
 156998
 157098
 157198
 157298
 157398
 157498
 157598
 157698
 157798
 157898
 157998
 158098
 158198
 158298
 158398
 158498
 158598
 158698
 158798
 158898
 158998
 159098
 159198
 159298
 159398
 159498
 159598
 159698
 159798
 159898
 159998
 160098



349

erved from Downey Ave
n of left

P.C. 298.5

SE of SA

ESC

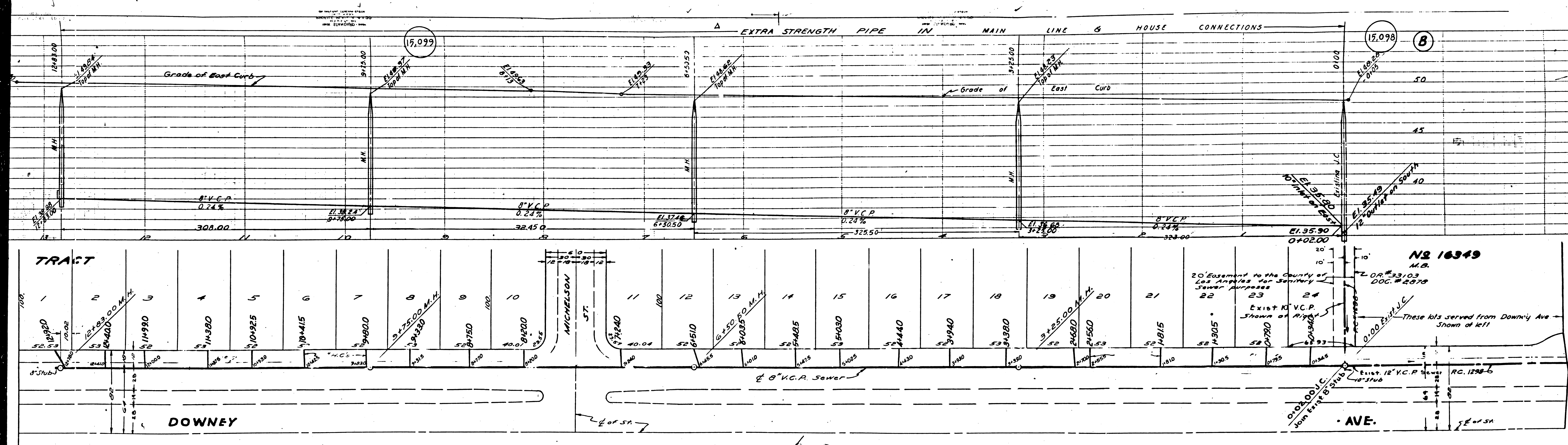
ESC

15,097

12

ESC

ESC



15,099

15,098

EXTRA STRENGTH PIPE IN MAIN LINE & HOUSE CONNECTIONS

Grade of East Curb

Grade of East Curb

TRACT

N2 16349 M.B.

20' Easement to the County of Los Angeles for Sewer Purposes

Exist 10" V.C.P. Shown at Right

These lots served from Downey Ave - Shown at left

DOWNEY

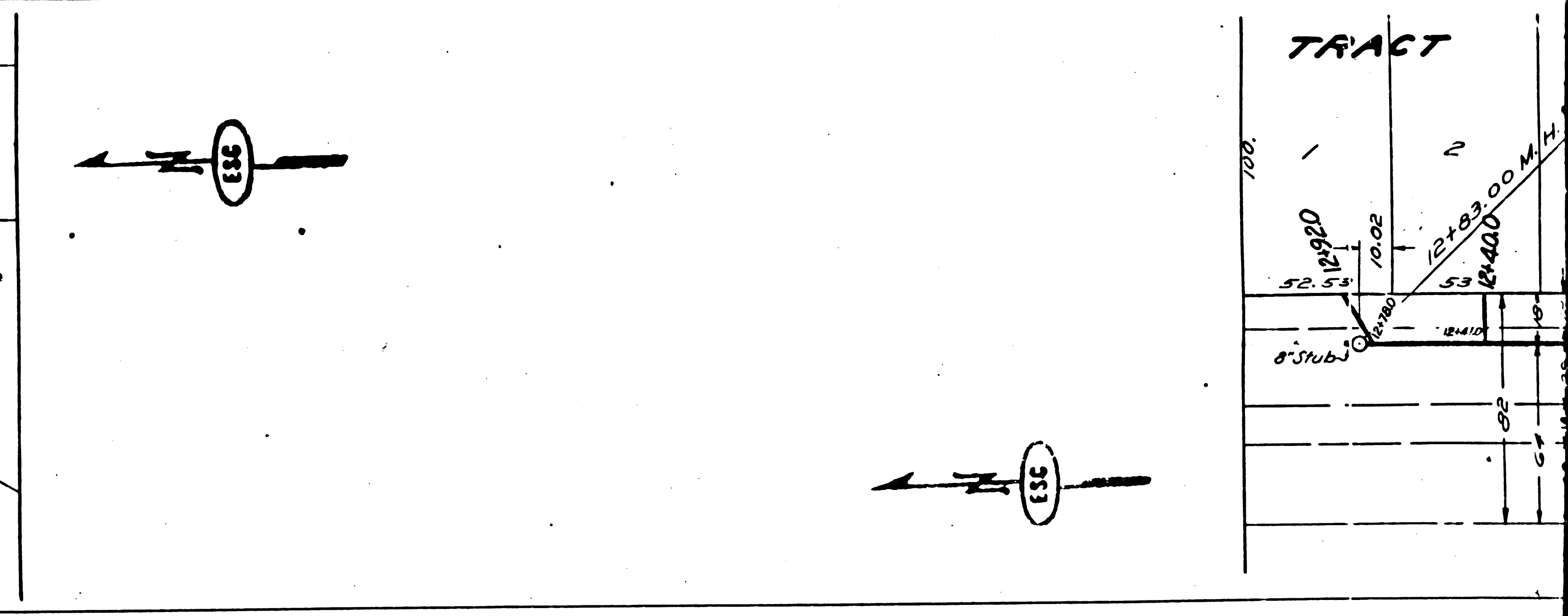
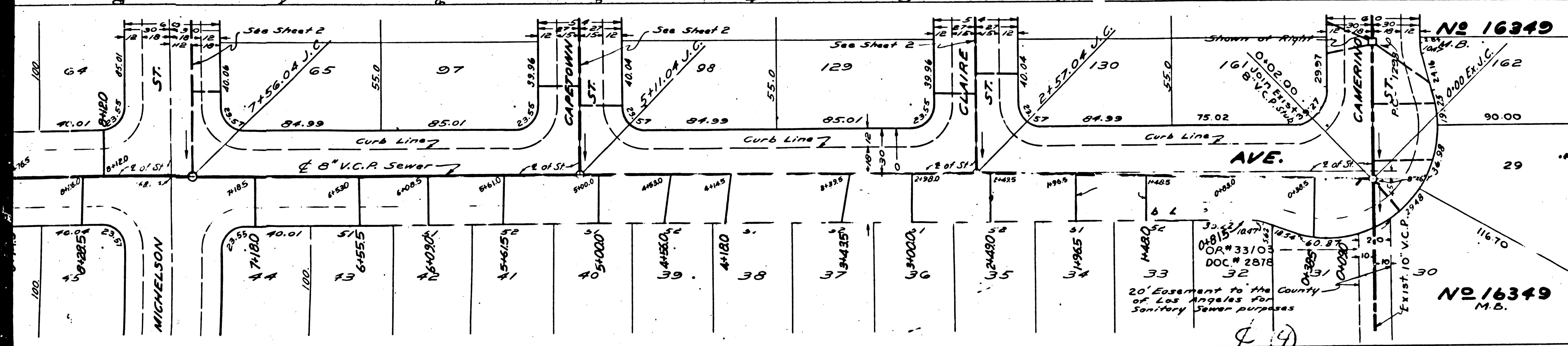
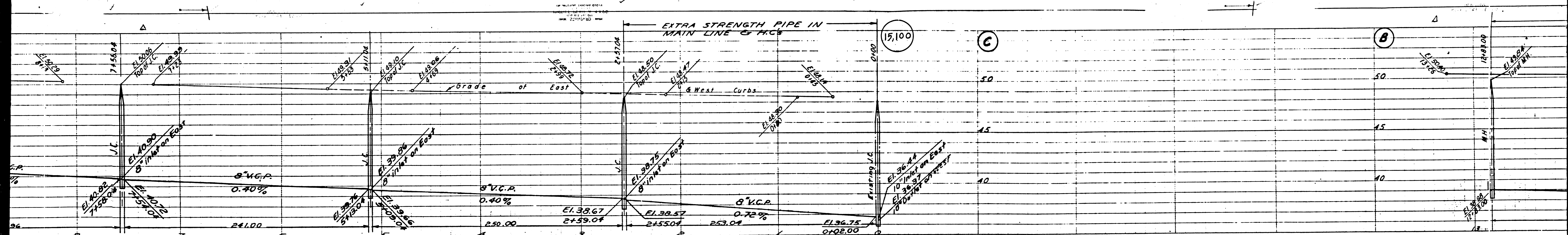
AVE.

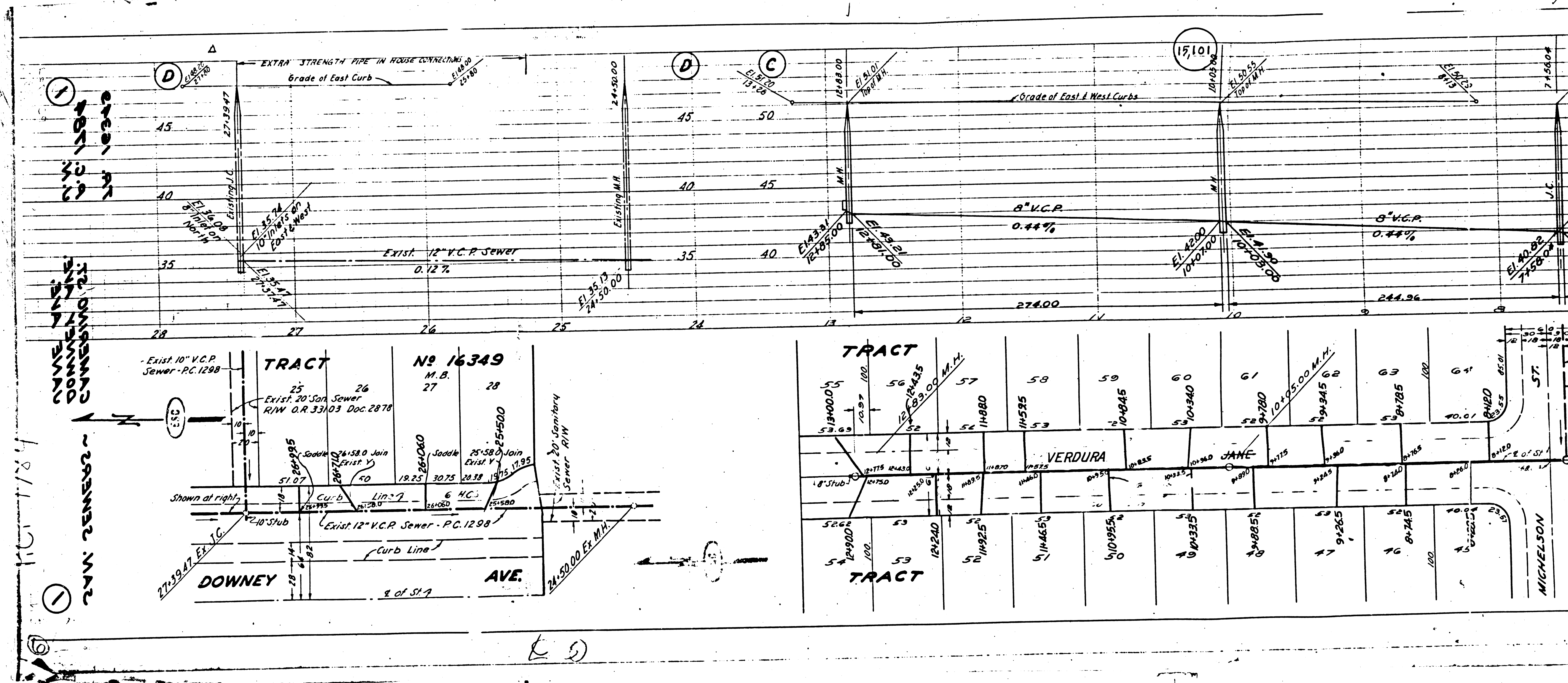
8" V.C.P. Sewer

MICHELSON ST.

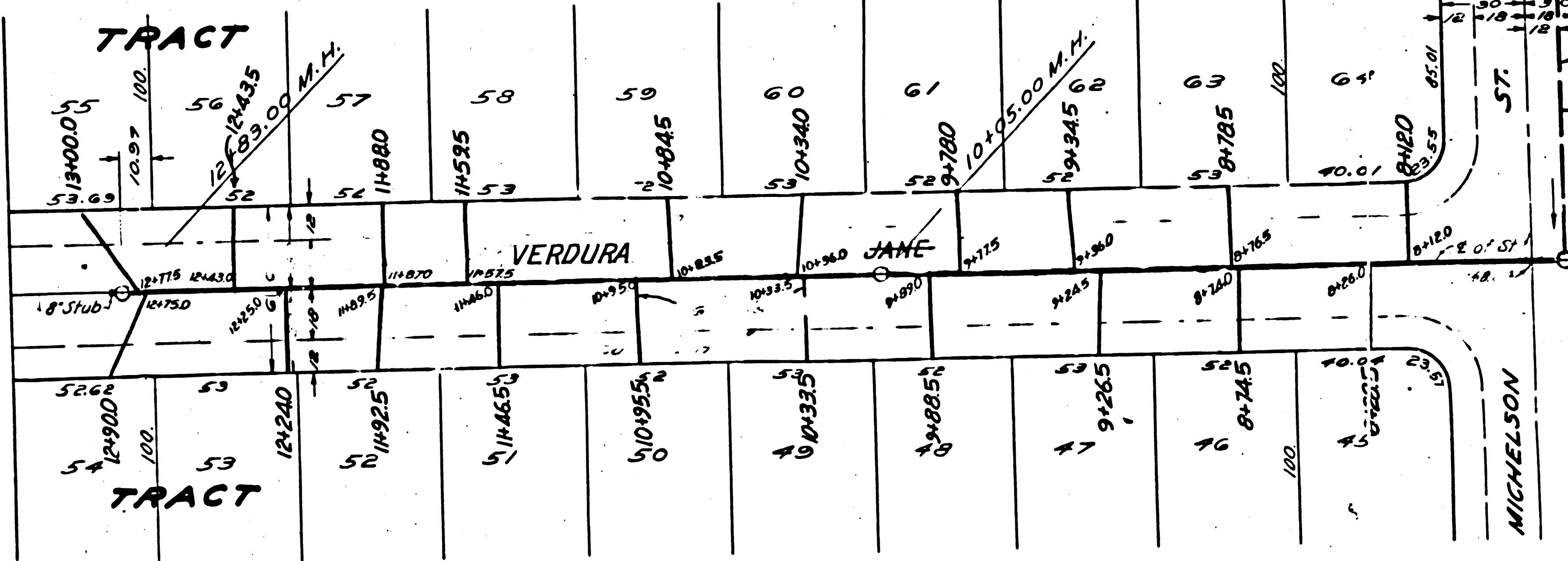
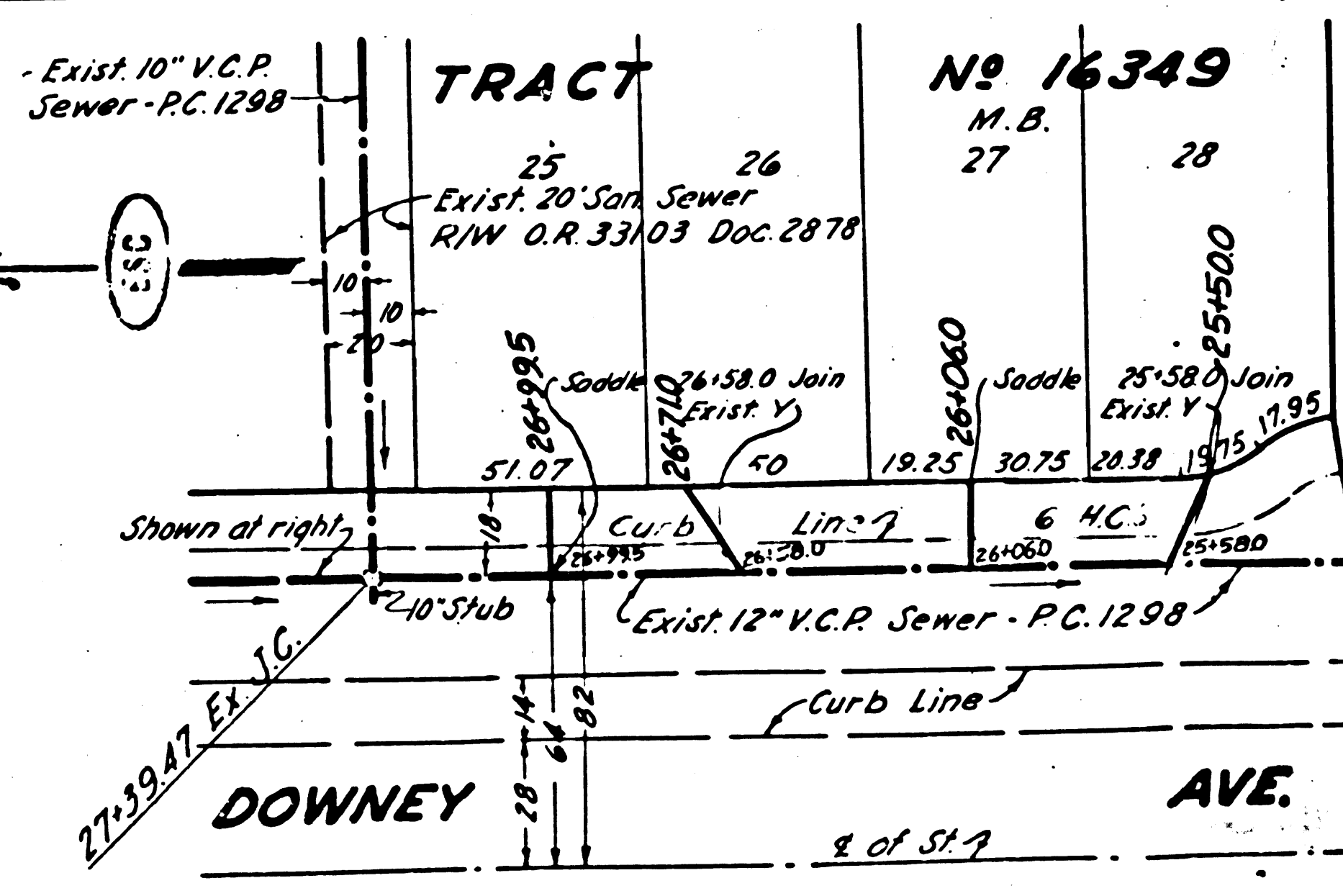
RC. 1298-6

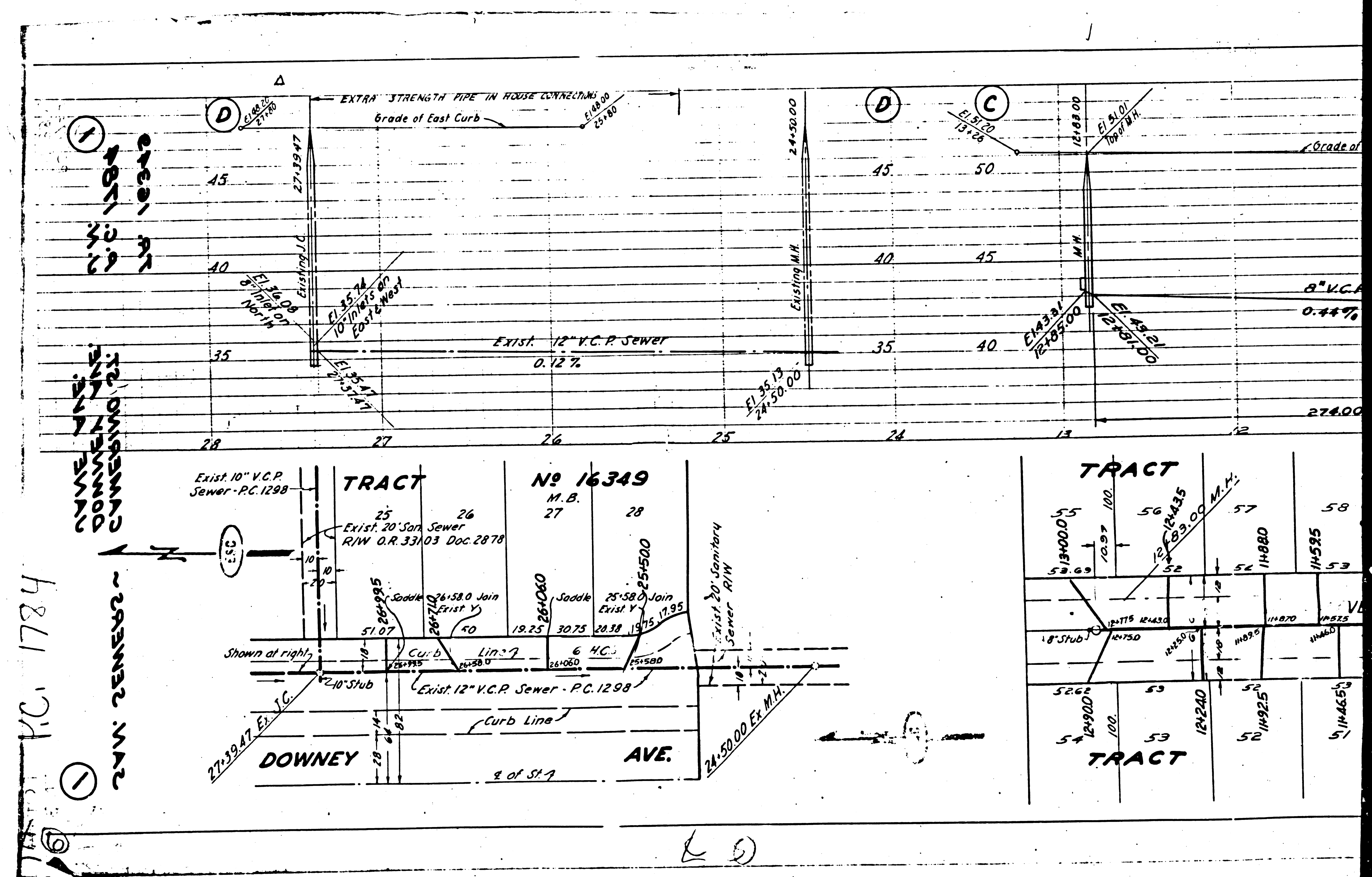
60





1
2
3
4
5
6
7
8
9
10
11
12
13
14
15
16
17
18
19
20
21
22
23
24
25
26
27
28
29
30
31
32
33
34
35
36
37
38
39
40
41
42
43
44
45
46
47
48
49
50
51
52
53
54
55
56
57
58
59
60
61
62
63
64
65
66
67
68
69
70
71
72
73
74
75
76
77
78
79
80
81
82
83
84
85
86
87
88
89
90
91
92
93
94
95
96
97
98
99
100

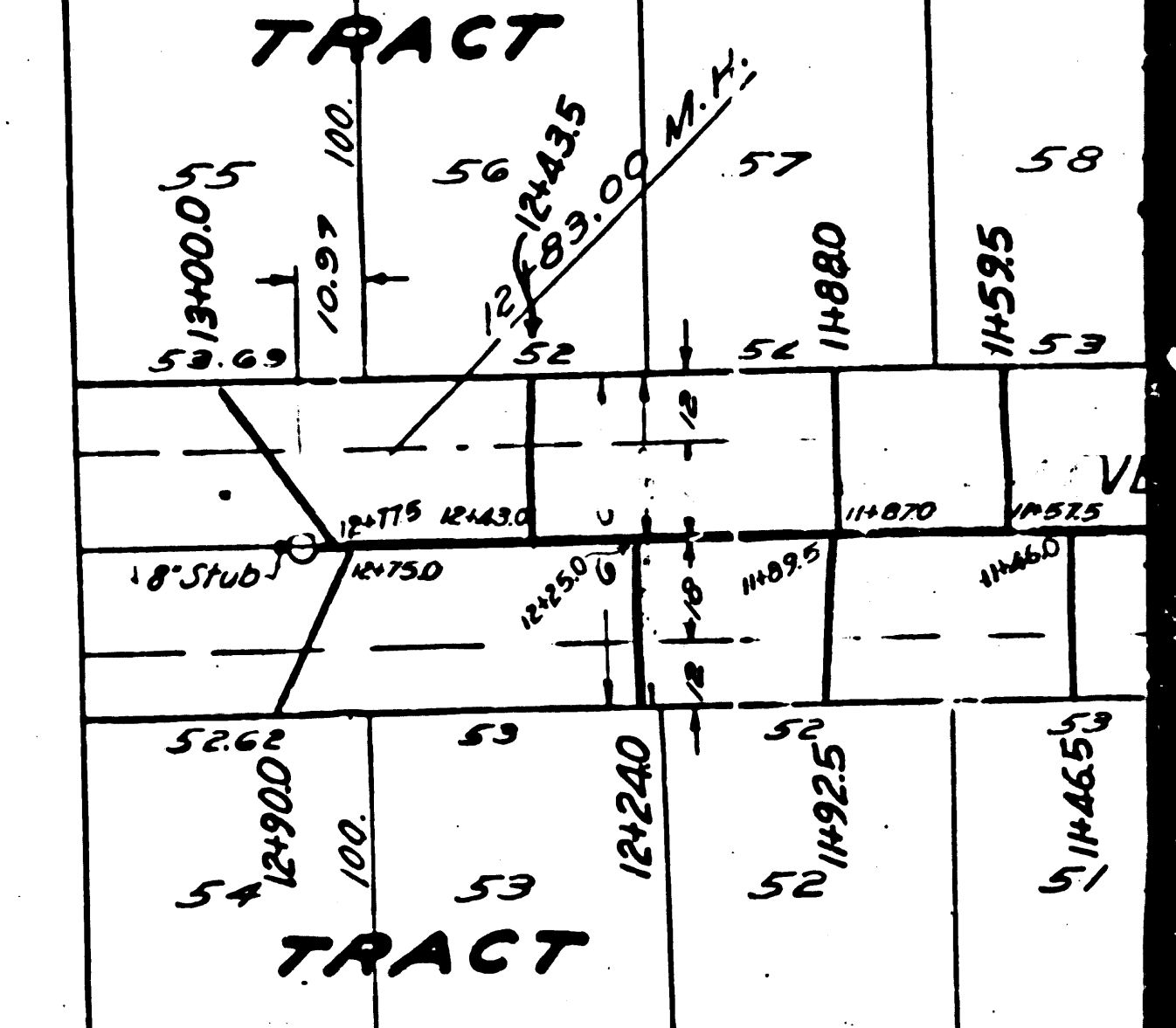
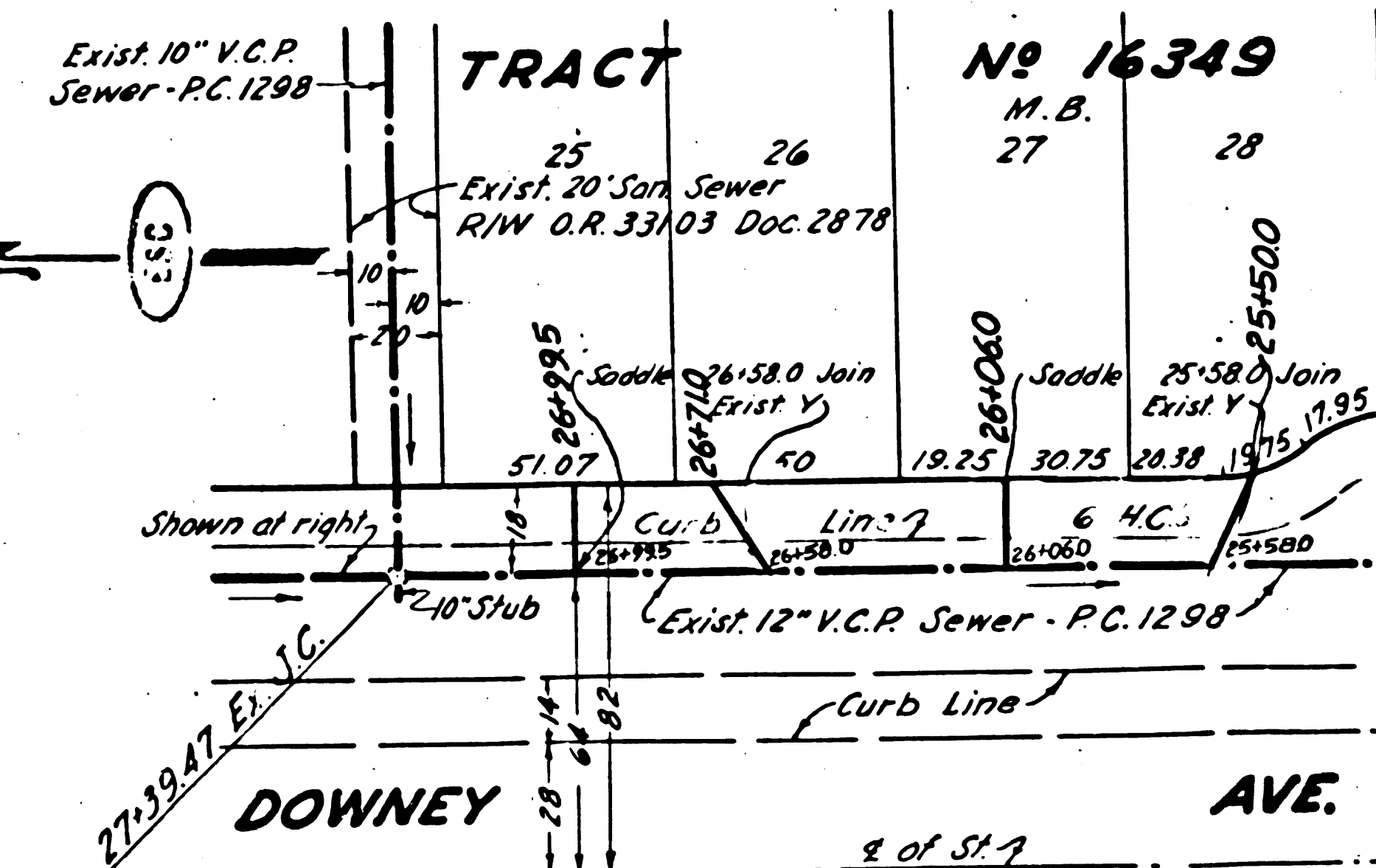


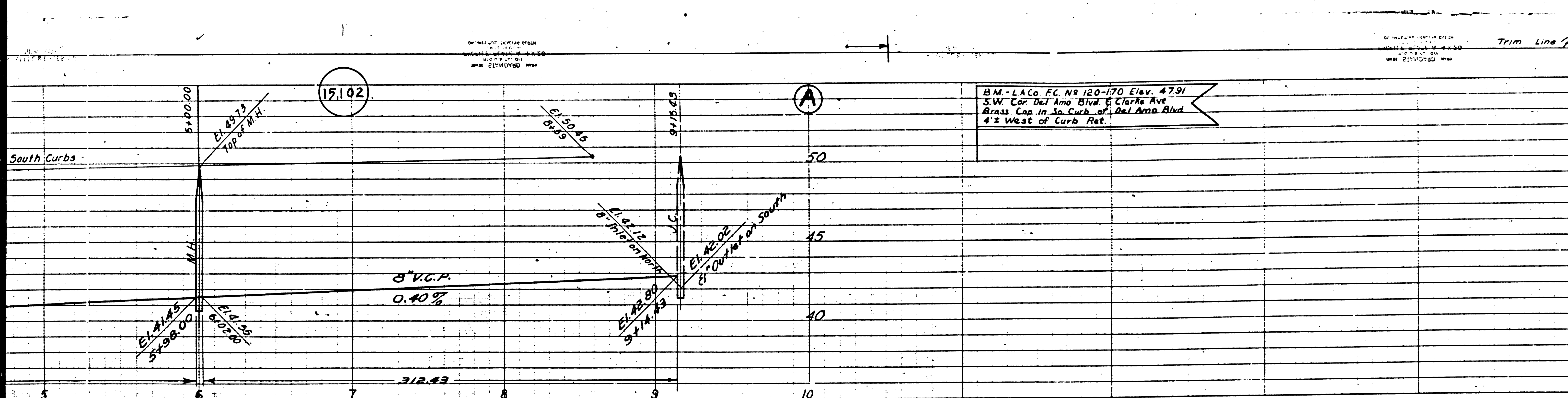


1784

1
2
3
4
5
6
7
8
9
10
11
12
13
14
15
16
17
18
19
20
21
22
23
24
25
26
27
28

1
2
3
4
5
6
7
8
9
10
11
12
13
14
15
16
17
18
19
20
21
22
23
24
25
26
27
28





BM-LACO FC No 120-170 Elev. 47.91
 S.W. Cor. Del Amo Blvd. & Clarke Ave.
 Brass Cap. in So. Curb of Del Amo Blvd.
 4' West of Curb Ret.

PROFILE, ALIGNMENT AND GRADE OF
SANITARY SEWERS
 TO BE CONSTRUCTED IN
CAPTOWN CLARE ST.
 BETWEEN JANE AVE. AND COKE AVE.
CONDOR CAPETOWN ST.
 BETWEEN JANE AVE. AND COKE AVE.
MICHELSON ST.
 BETWEEN JANE AVE. AND EAST TRACT LINE
COKE AVE.
 BETWEEN CAMERINO ST. AND MICHELSON ST.
IN TRACT No 16349

PRIVATE CONTRACT NO. 1784
 W. S. 32
 SHEET 2 OF 2 SHEETS

PREPARED IN THE OFFICES OF
ENGINEERING SERVICE CORPORATION

BY R. H. Nelson
 CIVIL ENGINEER

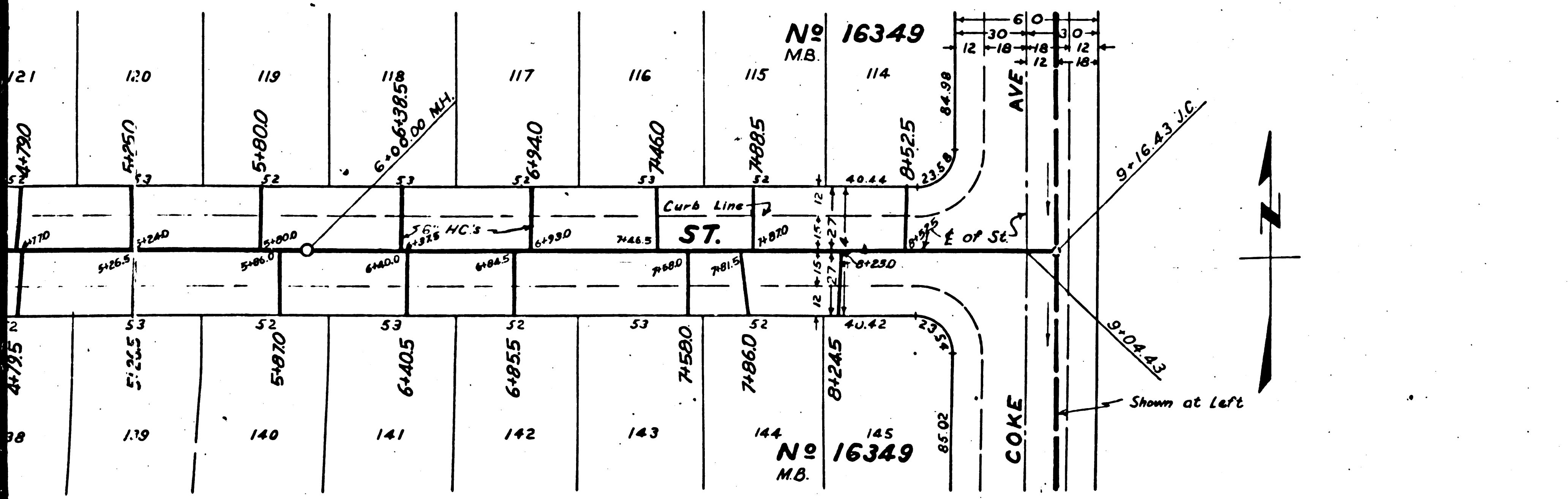
FOR LEGAL
 SEE PLAN NO. S-84
 FOR CONSTRUCTION NOTES SEE SHEET 1



COUNTY OF LOS ANGELES, CALIFORNIA
 APPROVED: [Signature]
 OFFICE ENGINEER
 APPROVED BY: [Signature]
 CIVIL ENGINEER
 CHECKED: [Signature]
 OFFICE OF COUNTY ENGINEER No. C. E. No. 7860

Before breaking into any existing structure
 and before final acceptance of this work,
 County Sanitation District should be notified
 in order that required inspection may be made.

do 1917-52 W. L. Lavin

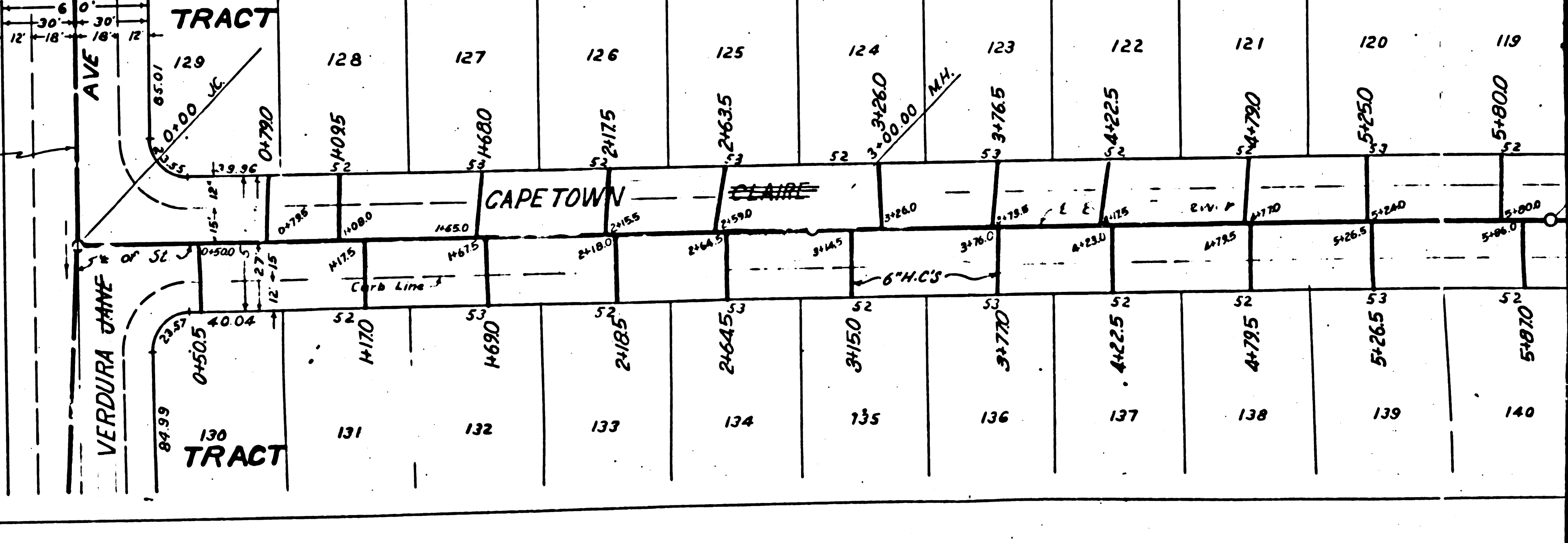
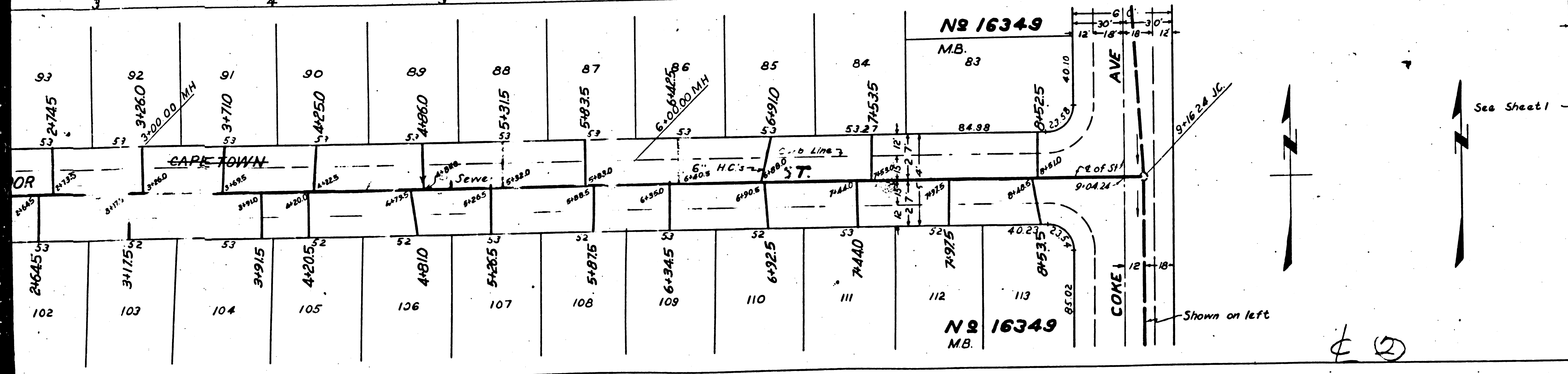
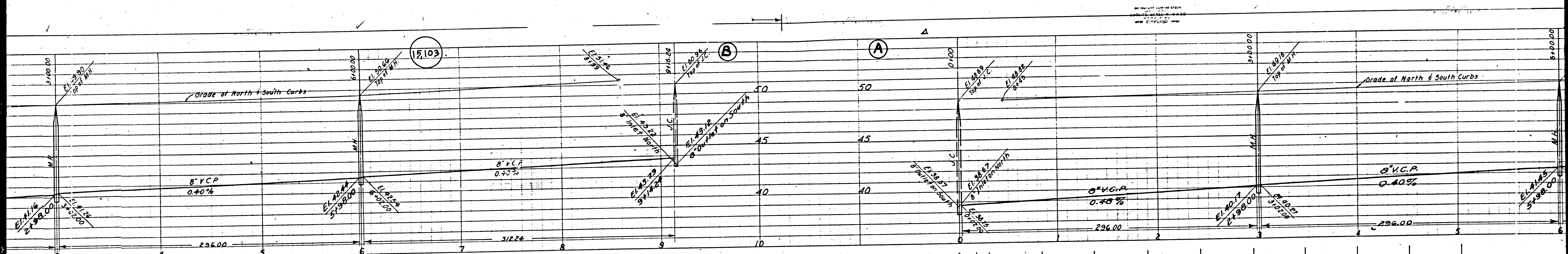


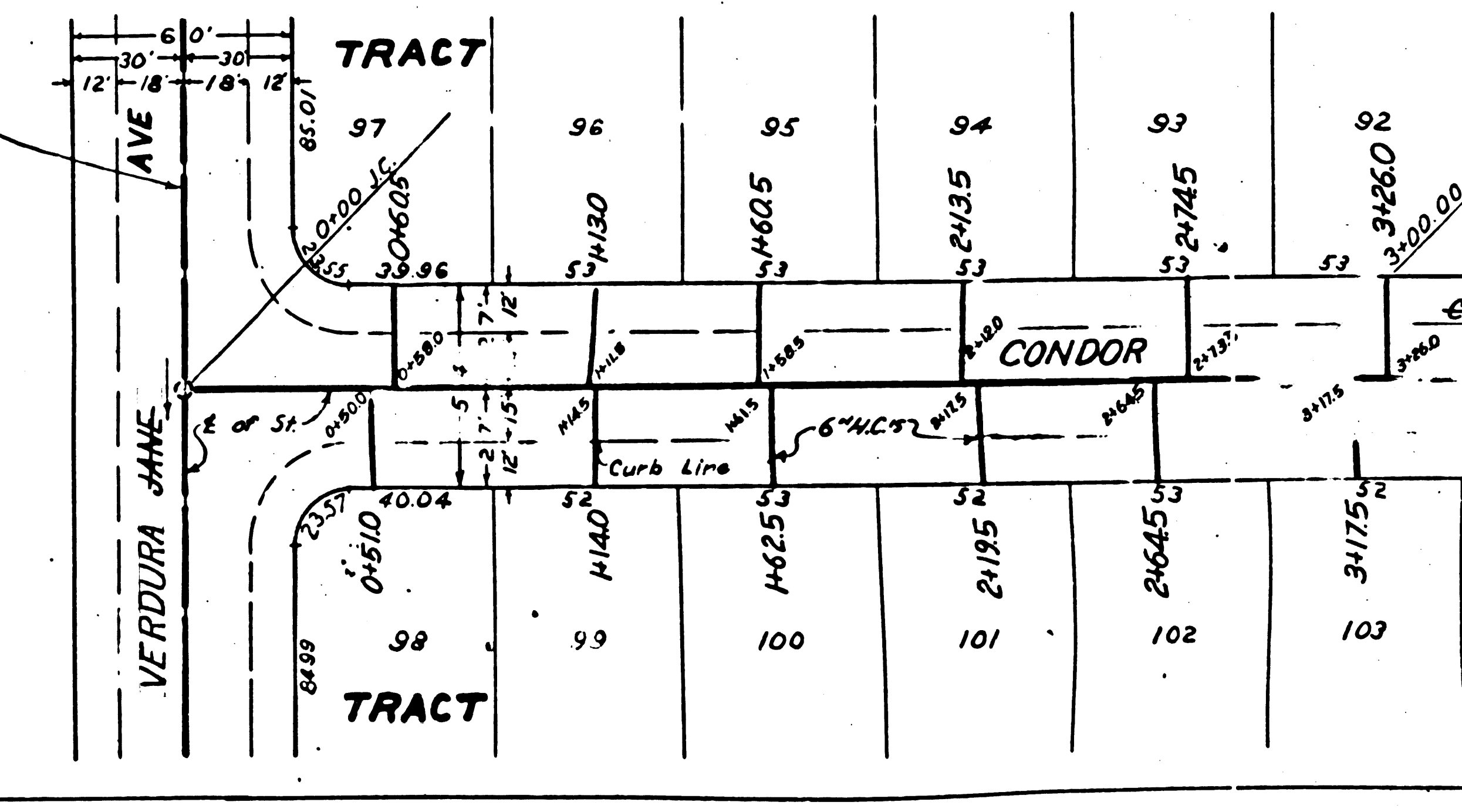
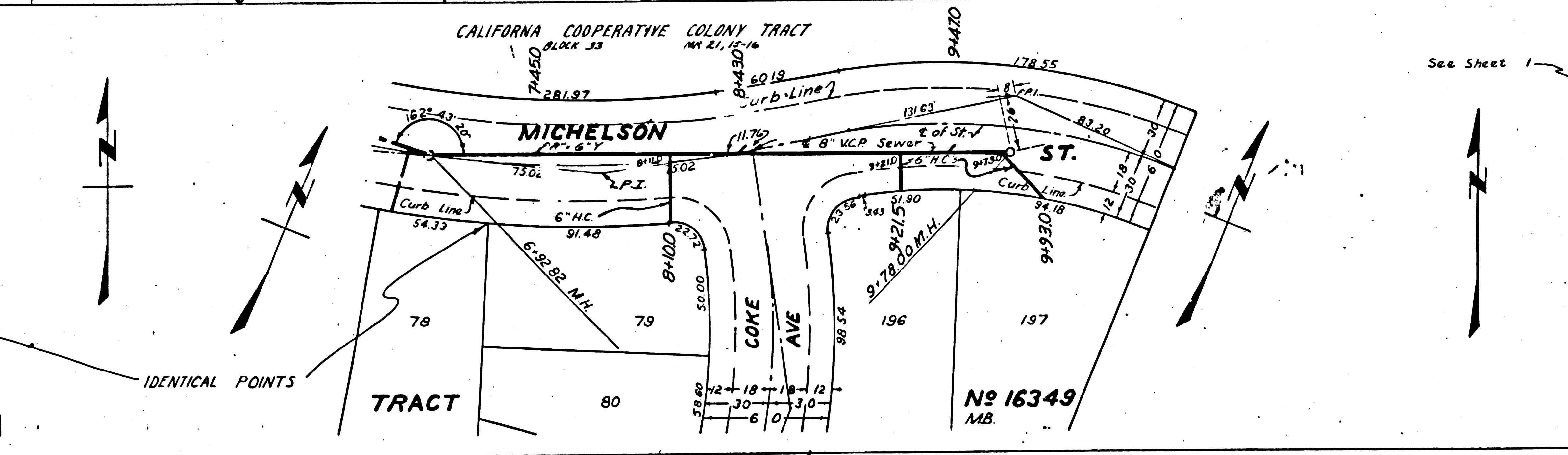
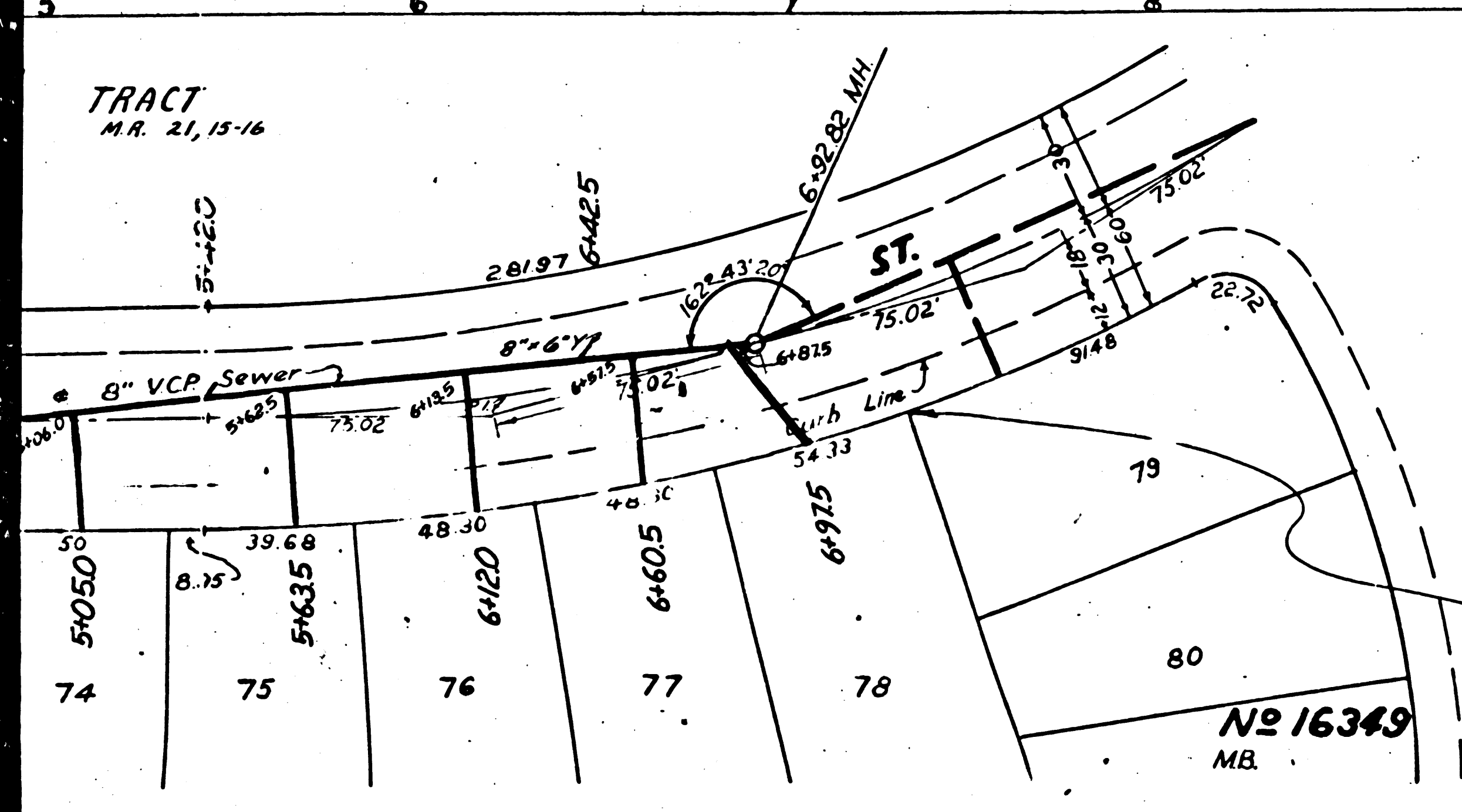
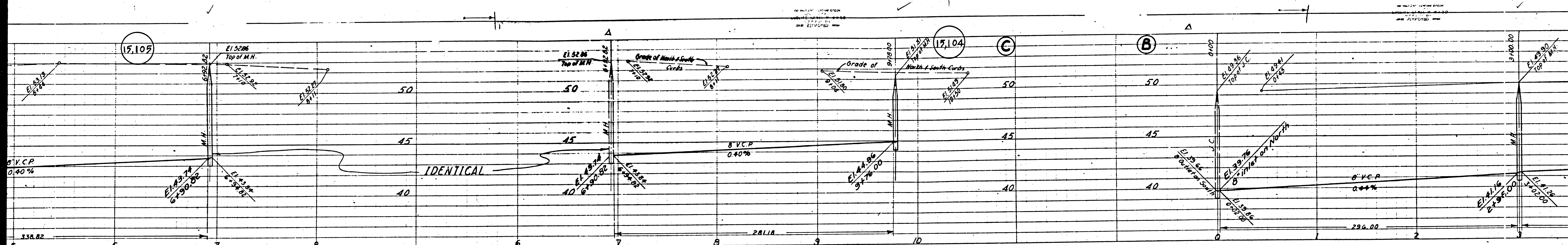
ENGINEERING SERVICE CORPORATION			
1525 W. WASHINGTON BLVD.			
LOS ANGELES 15, CALIF. PH. 7-2461			
REVISIONS	TRACED BY	AGS	
	DESIGNED BY	CED	
	CHECKED BY	J.M.F.	
	SUBMITTED	[Signature]	
BUD. STRUCT. NO. 5877-25			
W. O. NO.	DWG. NO.	DATE	SCALE
		APR 51	VERT. 1"=40'
			PLAN 1"=40'

22W. SEWERS

CONDOR VINE ST.
 MICHELSON ST.
 CAPETOWN ST.
 CLARE ST.

⑤

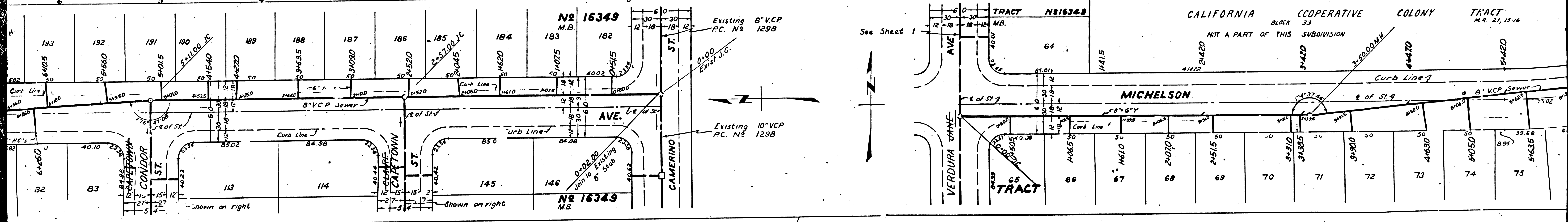
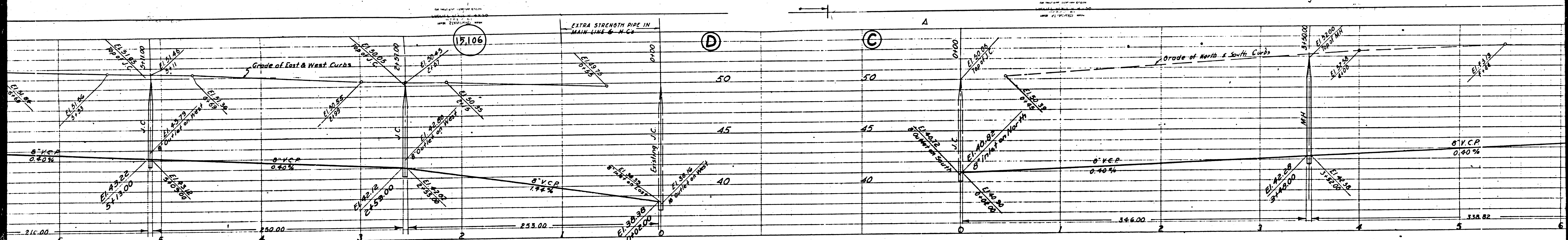




TRACT No 16349 MB. 74 75 76 77 78 79 80

CALIFORNIA COOPERATIVE COLONY TRACT No 16349 MB. 80 81 82 83 84 85 86 87 88 89 90 91 92 93 94 95 96 97 98 99 100 101 102 103

See Sheet 1



④ ⑨

