

NOTE: NO REPRESENTATIVE OF THE COUNTY ENGINEER WILL SURVEY OR LAY OUT ANY PORTION OF THE WORK.

THE OWNER OR HIS AUTHORIZED REPRESENTATIVE SHALL FURNISH THE COUNTY ENGINEER WITH GRADE SHEETS AND STATUSES FOR ALL HOUSE CONNECTIONS AND Y BRANCHES AND SHALL PROVIDE STAKES FOR THEM AT THEIR PROPER LOCATIONS WITH STATUSES MARKED IN WRITING BY THE OWNER OR HIS REPRESENTATIVE.

NO REVISIONS SHALL BE MADE IN THESE PLANS WITHOUT APPROVAL OF THE COUNTY ENGINEER.

- USE STANDARD MANHOLE FRAMES AND COVERS, S-117.
- USE STANDARD STRENGTH PIPE EXCEPT AS NOTED.
- USE CEMENT MORTAR FOR ALL VITRIFIED CLAY PIPE JOINTS.
- RESURFACE ALL TRENCH WITHIN PAVED AREA TO MEET L.A. COUNTY ROAD DEPT. REQUIREMENTS.
- ENCASE FOUR FEET OF SEWER AT POINTS OF INTERFERENCE WITH POLES, S-119.
- HOUSE CONNECTIONS TO BE CONSTRUCTED WITH INVERT AT PROBABLY ONE (1) FEET BELOW CURB GRADE.
- ALL STRUCTURES SHALL BE BRICK SEWER STRUCTURES 3-0-0.
- PROVIDE STAKES ON THE PROPERTY LINES OR PROPERTY CORNERS AT RIGHT ANGLES TO THE SEWER LINE AT THE CENTER LINE OF EACH MANHOLE.
- STOPPERS TO BE INSTALLED WITH JOINT COMPOUND BY MANUFACTURER AT THIS PLANT - SPEC. 5-6-3-48.
- CONCRETE PAVEMENT TO BE CUT NOT LESS THAN 2" IN DEPTH WITH CONCRETE SAW, SPEC. 5-6-3-65.
- H.C.'S FOR TR 17224 TO BE CONSTRUCTED UNDER P.C. 1813.

PROFILE ALIGNMENT AND GRADE OF
SANITARY SEWERS
 TO BE CONSTRUCTED IN
ARBOR RD.
 BETWEEN COKE AVE. & LEVELSIDE AVE.
 IN TRACT NO 17223

PRIVATE CONTRACT NO. 1737
 W.B. 30
 SHEET 1 OF 3 SHEETS
 SCALE: HOR. 1" = 40' VERT. 1" = 4'
 June 1951
 PREPARED IN THE OFFICES OF
ENGINEERING SERVICE CORPORATION
 BY E. J. Kelly
 116 C & 10 W

ENGINEERING SERVICE CORPORATION
 1127 W WASHINGTON BLVD.
 LOS ANGELES 15 CALIF. PR. 7266

REVISIONS		TRACED BY
Changed grade	9-4-51	H.S.
		DES'D BY K.S.
		CK'D BY
		SUBMITTED:

SUB STRUCTURES CK'D

W. O. NO.	DWG. NO.	DATE	SCALE	L. S.	P. S.
3977-123		June 1951	1" = 40'		

REVISION CHECKED K. E. Kuhn 9-20-51
 OFFICE OF COUNTY ENGINEER
 REG. C. E. NO. 7860

GRADES TO WHICH THIS IMPROVEMENT IS TO BE CONSTRUCTED ARE SHOWN ON PLANS AND PROFILES. GRADE POINTS FOR TOP OF CURB, CENTER LINE OF STREETS, OR CENTER LINE OF ALLEY ARE SHOWN BY CIRCLES ON PROFILES. AT ALL POINTS BETWEEN DESIGNATED POINTS THE GRADE SHALL BE ESTABLISHED BY AS TO CONFORM TO A STRAIGHT LINE DRAWN BETWEEN SAID DESIGNATED POINTS.

ELEVATIONS ARE IN FEET ABOVE U. S. G. S. DATUM OR MEAN SEA LEVEL.

THIS DRAWING AND THE DATA HEREON ARE HEREBY MADE A PART OF THE SPECIFICATIONS. WORK SHALL BE CONSTRUCTED ACCORDING TO SPECIFICATIONS ON FILE IN THE OFFICE OF THE COUNTY ENGINEER AND SHALL BE PROSECUTED ONLY IN THE PRESENCE OF THE COUNTY ENGINEER.

BEFORE WORK CAN BE STARTED THE CONTRACTOR MUST OBTAIN A PERMIT TO EXCAVATE IN COUNTY STREETS FROM THE L. A. COUNTY ROAD DEPT. 100 W. 2ND ST. AND MAKE A DEPOSIT WITH THE COUNTY ENGINEER, 212 COUNTY ENGINEERING BUILDING, SUFFICIENT TO COVER THE COST OF CONSTRUCTION INSPECTION AND RECORD PLANS.

APPROVAL OF THIS PLAN BY THE COUNTY OF LOS ANGELES DOES NOT CONSTITUTE A REPRESENTATION AS TO THE ACCURACY OF THE LOCATION OF, OR THE EXISTENCE OR NON-EXISTENCE OF, ANY UNDERGROUND UTILITY, PIPE, OR STRUCTURE WITHIN THE LIMITS OF THIS PROJECT. THIS NOTE APPLIES TO ALL SHEETS.

COUNTY OF LOS ANGELES, CALIFORNIA

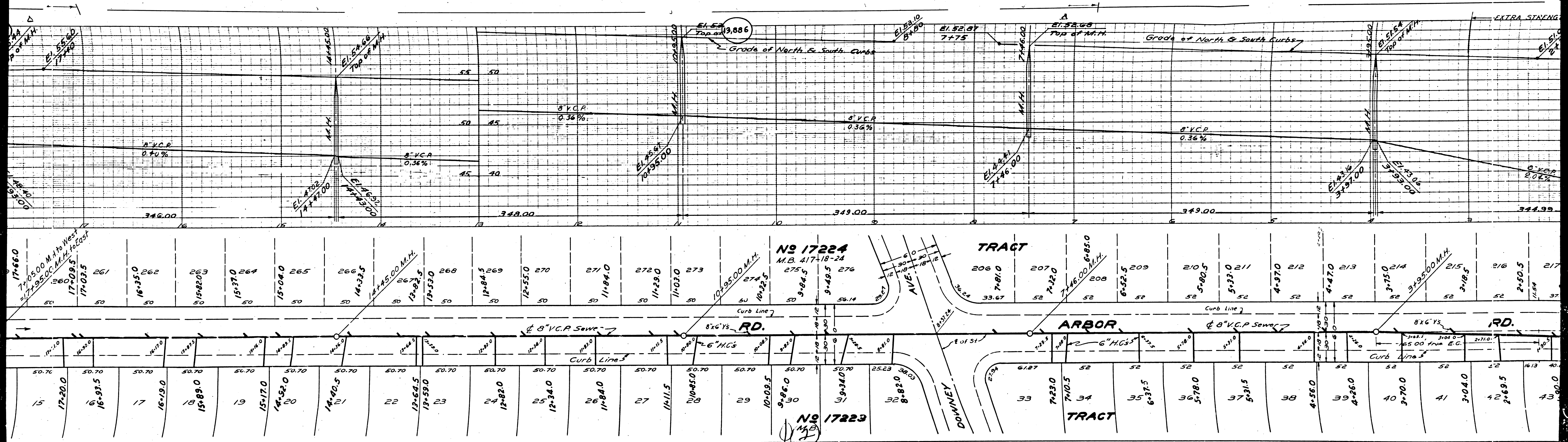
Before breaking into any existing structure and before final acceptance of this work, County Sanitation District should be notified in order that required inspection may be made.

APPROVED: [Signature]
 COUNTY ENGINEER

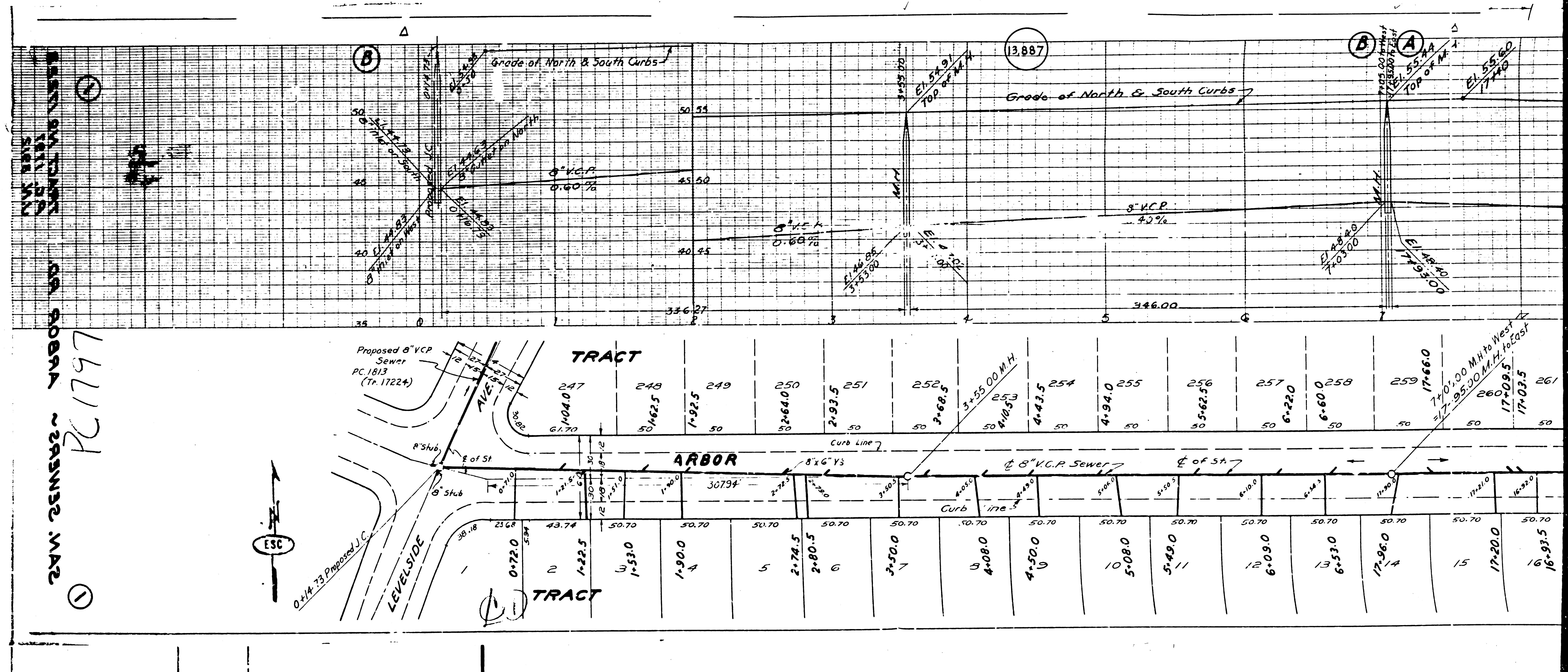
APPROVED BY: [Signature]
 OFFICE ENGINEER

DECEMBER 6-22-51
 OFFICE OF COUNTY ENGINEER, 212 C. E. NO. 1712

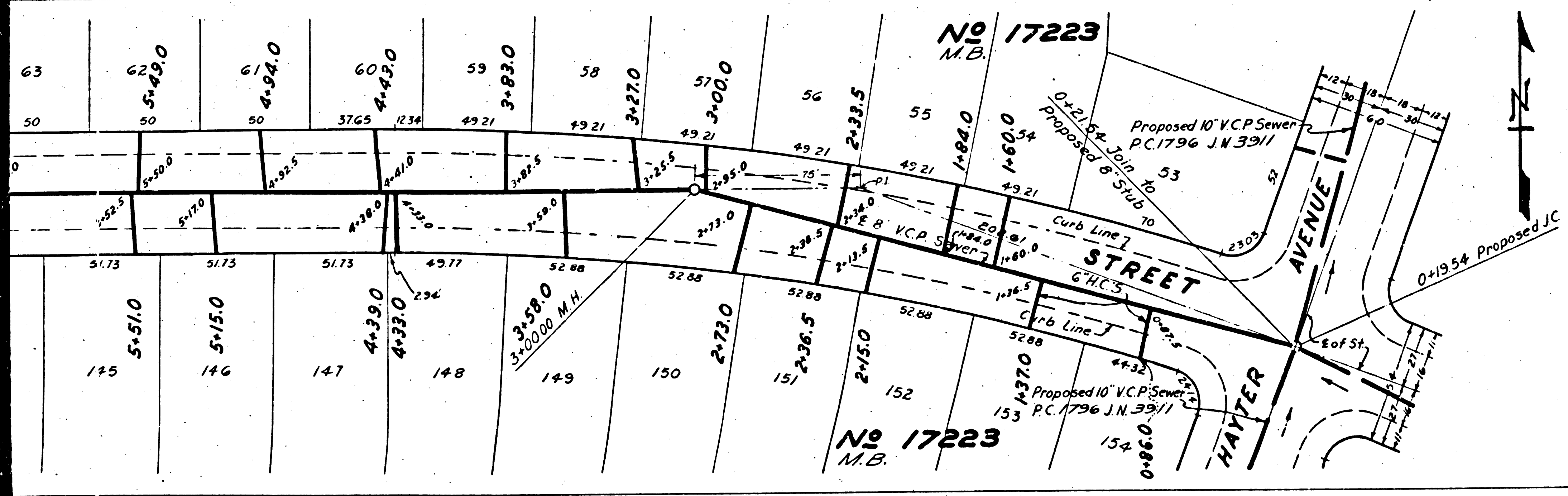
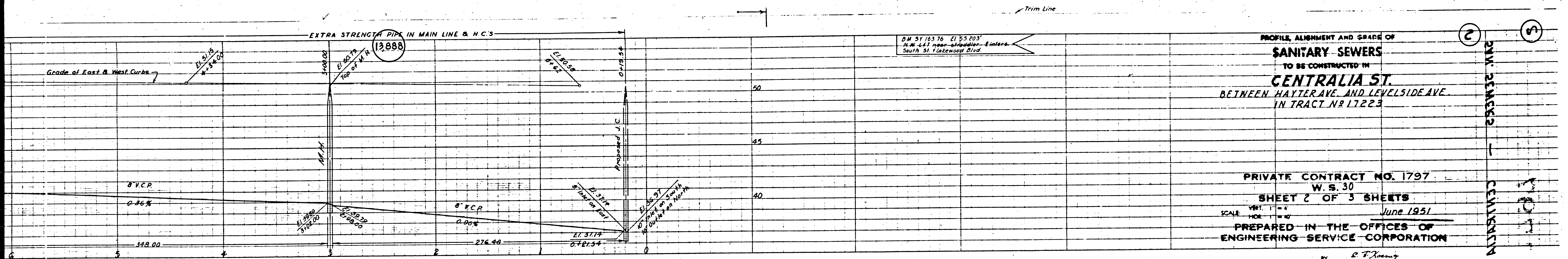
SANITARY SEWERS
 ARBOR RD.
 BETWEEN COKE AVE. & LEVELSIDE AVE.
 TRACT NO 17223



Lot No.	Area	Dimensions	Notes
15	17-20.0	50.76	
16	16-93.5	50.70	
17	18-19.0	50.70	
18	15-89.0	50.70	
19	15-17.0	50.70	
20	14-52.0	50.70	
21	14-40.5	50.70	
22	12-54.5	50.70	
23	13-59.0	50.70	
24	12-82.0	50.70	
25	12-34.0	50.70	
26	11-84.0	50.70	
27	14-11.5	50.70	
28	10-85.0	50.70	
29	10-09.5	50.70	
30	9-85.0	50.70	
31	9-31.0	50.70	
32	25.23 38.03	50.70	
33	7-23.0	52	
34	7-10.5	52	
35	6-37.5	52	
36	5-78.0	52	
37	5-31.5	52	
38	4-56.0	52	
39	4-26.0	52	
40	3-70.0	52	
41	3-04.0	52	
42	2-69.5	52	
43	2-15.0	52	
44	2-50.5	52	
45	2-15.4	52	
46	2-50.5	52	
47	2-15.4	52	
48	2-50.5	52	
49	2-15.4	52	
50	2-50.5	52	
51	2-15.4	52	
52	2-50.5	52	
53	2-15.4	52	
54	2-50.5	52	
55	2-15.4	52	
56	2-50.5	52	
57	2-15.4	52	
58	2-50.5	52	
59	2-15.4	52	
60	2-50.5	52	
61	2-15.4	52	
62	2-50.5	52	
63	2-15.4	52	
64	2-50.5	52	
65	2-15.4	52	
66	2-50.5	52	
67	2-15.4	52	
68	2-50.5	52	
69	2-15.4	52	
70	2-50.5	52	
71	2-15.4	52	
72	2-50.5	52	
73	2-15.4	52	
74	2-50.5	52	
75	2-15.4	52	
76	2-50.5	52	
77	2-15.4	52	
78	2-50.5	52	
79	2-15.4	52	
80	2-50.5	52	
81	2-15.4	52	
82	2-50.5	52	
83	2-15.4	52	
84	2-50.5	52	
85	2-15.4	52	
86	2-50.5	52	
87	2-15.4	52	
88	2-50.5	52	
89	2-15.4	52	
90	2-50.5	52	
91	2-15.4	52	
92	2-50.5	52	
93	2-15.4	52	
94	2-50.5	52	
95	2-15.4	52	
96	2-50.5	52	
97	2-15.4	52	
98	2-50.5	52	
99	2-15.4	52	
100	2-50.5	52	



2417 261722 VABOR 09 0087A
 PC 1797
 261722 VABOR 09 0087A



ENGINEERING SERVICE CORPORATION
1127 W. WASHINGTON BLVD.
LOS ANGELES 12, CALIF.
PP 1204

APPROVED BY *C.W.K.*
K.S.

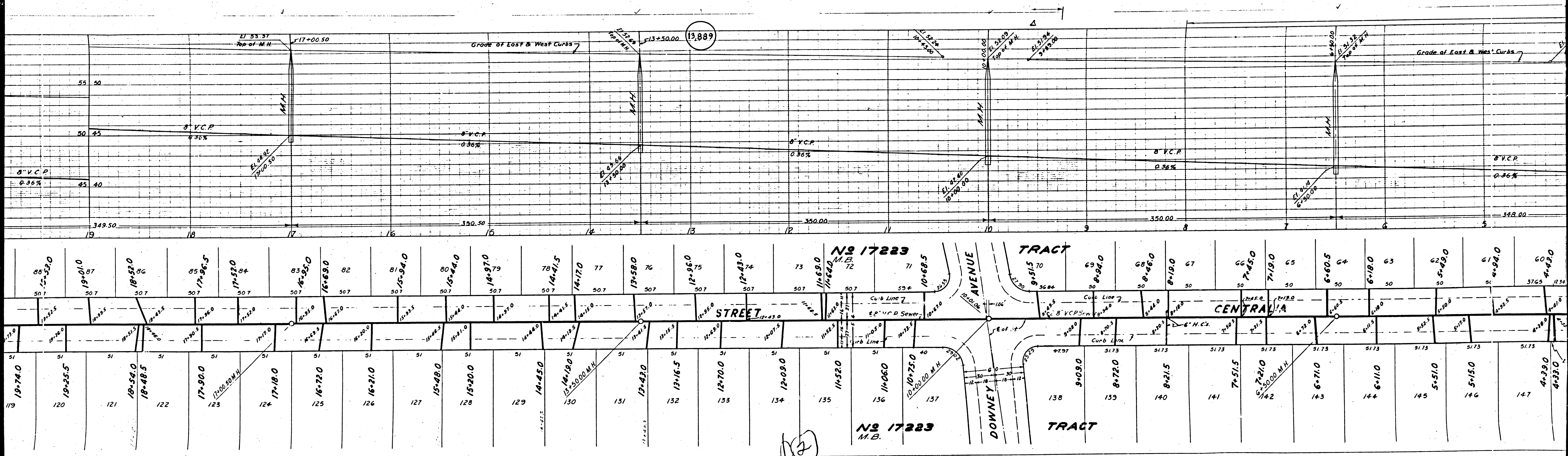
DATE: June 1951

COUNTY OF LOS ANGELES, CALIFORNIA
APPROVED BY *[Signature]*
Office Engineer
SANITATION DISTRICT NO. 3

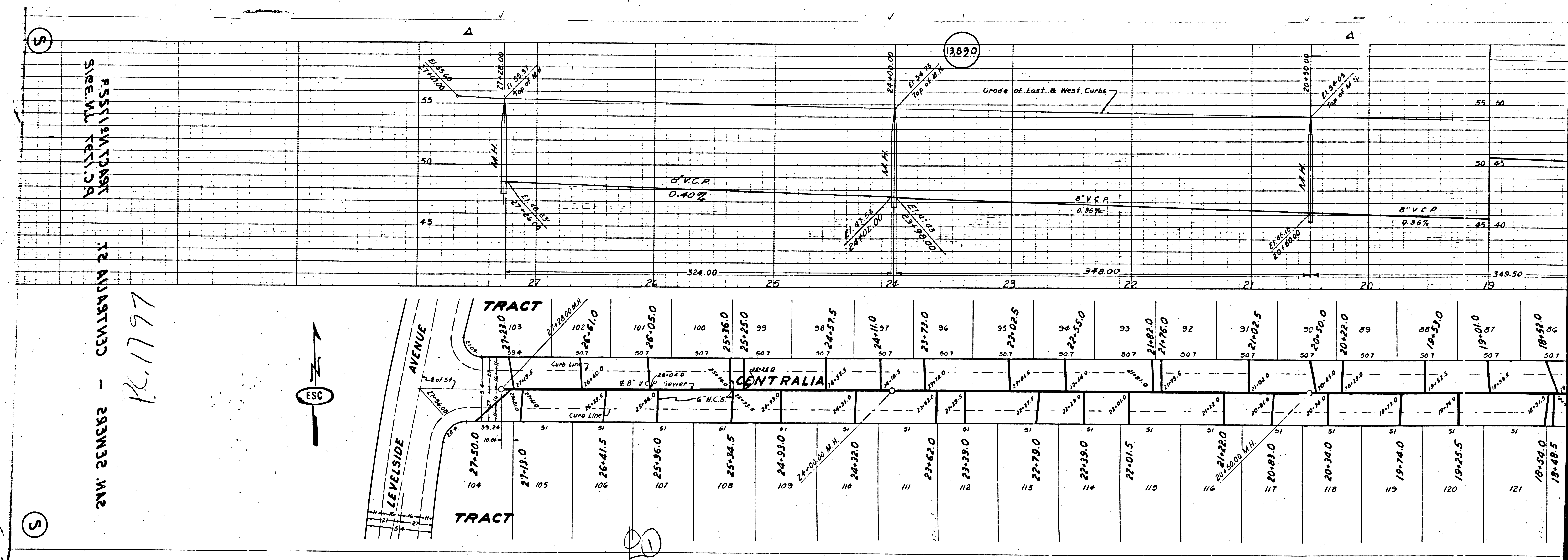
CHECKED BY *H.L. Smalzer* 6-29-51
OFFICE OF COUNTY ENGINEER REG. C. E. NO. 2412

Before breaking into any existing structure
and before final acceptance of this work,
County Sanitation District should be notified
in order that required inspection may be made.

SANITARY SEWERS - CENTRALIA ST.
TRACT NO. 17223



12



PASSIVE/ACTIVE
 SIDE/MAIN RESIDUAL

2ND 23MBS - 23MBS MAR

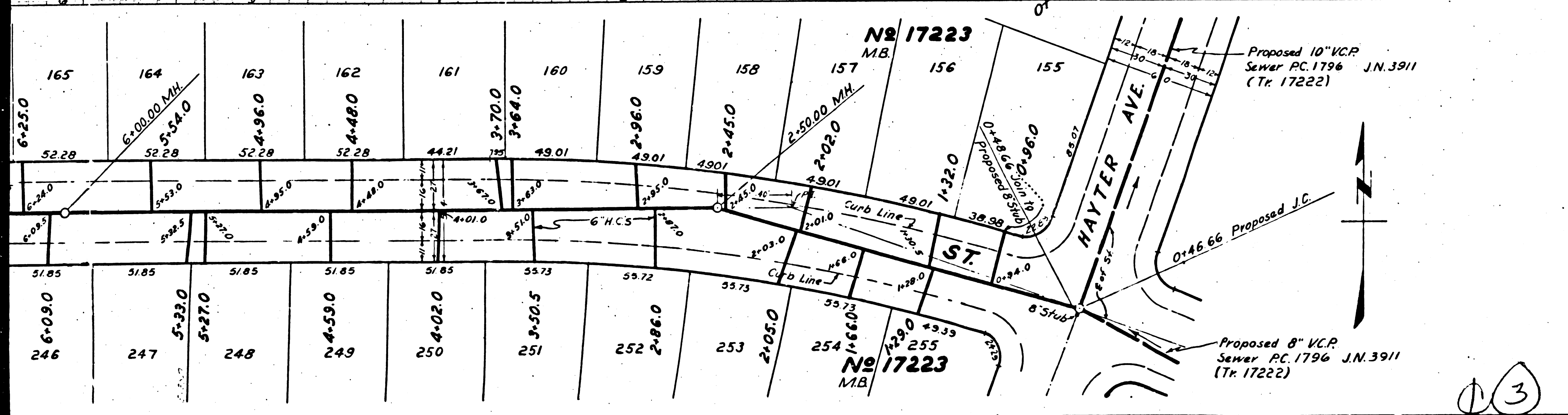
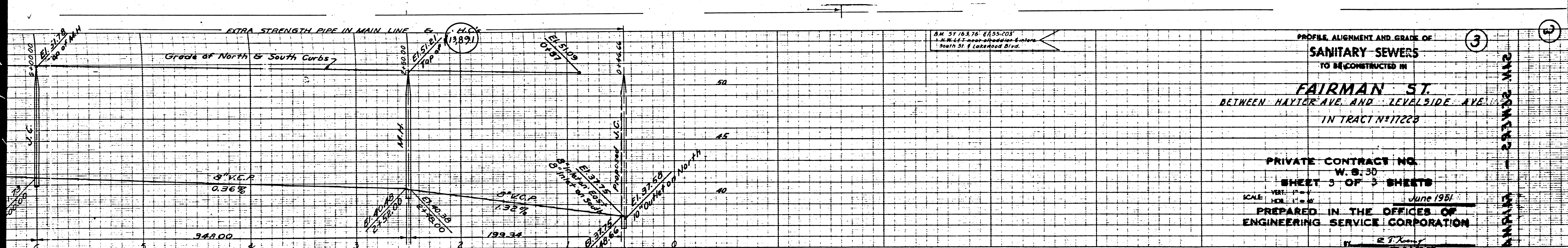
R. 1797

5

5

13890

11



B.M. 51168.76' E155.203'
 1.44 M. 112' West of Hayter Ave. & Center
 South St. & Lakewood Blvd.

PROFILE ALIGNMENT AND GRADE OF
SANITARY SEWERS
TO BE CONSTRUCTED IN
FAIRMAN ST.
BETWEEN HAYTER AVE. AND LEVALSIDE AVE.
IN TRACT N° 17223

PRIVATE CONTRACT NO. W. 8.30
SHEET 3 OF 3 SHEETS
 SCALE: VERT. 1" = 4'
 HOR. 1" = 40' June 1951
PREPARED IN THE OFFICES OF
ENGINEERING SERVICE CORPORATION
 BY *R. T. Koenig*

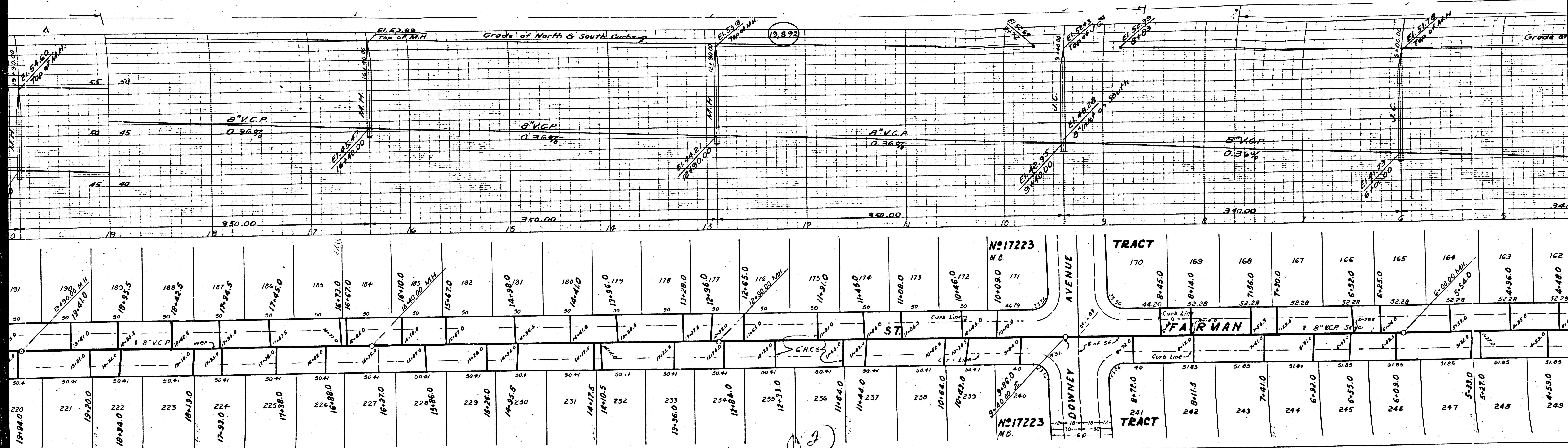
ENGINEERING SERVICE CORPORATION 1127 W WASHINGTON BLVD. LOS ANGELES 15 CALIF.	
TRACED BY: <i>A.S. & C.W.K.</i> DESIGNED BY: <i>R.S.</i> CHECKED BY: SUBMITTED:	DATE: June 1951 SCALE: 1" = 40' SHEET: 3 OF 3

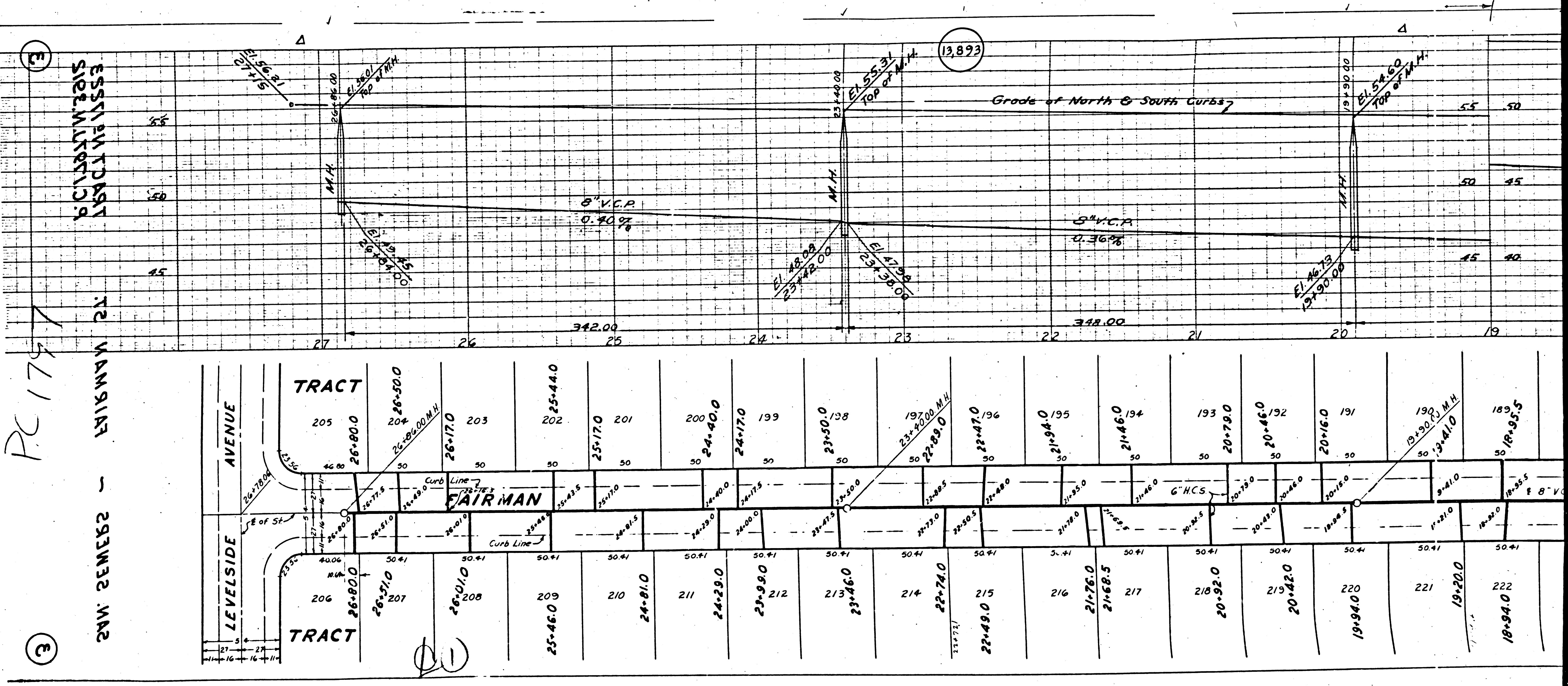
FOR LEGEND SEE PLAN NO. S-44
 FOR CONSTRUCTION NOTES SEE D-1001

Before breaking into any existing structure and before final acceptance of this work, County Sanitation District should be notified in order that required inspection may be made.

COUNTY OF LOS ANGELES, CALIFORNIA
 APPROVED: *[Signature]*
 COUNTY ENGINEER
 APPROVED BY: *[Signature]* Office Engineer
 CHIEF ENGINEER OF COUNTY SANITATION DISTRICT NO. 3
 CHECKED: *[Signature]* 6-23-51
 OFFICE OF COUNTY ENGINEER, E.G. C. & NO. 6412

112-12-51
 SIBEN.W. 1811.39
 112 W WASHINGTON ST.





PC 175.7

E

3

2" SAN SEWERS - 18" MANHOLE

ESSENTIAL TO DISTRICT SIDEWALKS