

- (1) USE RECTANGULAR MANHOLE FRAME AND COVER, S-a-131.
- (2) USE STANDARD STRENGTH PIPE.
- (3) USE CEMENT MORTAR FOR ALL VITRIFIED CLAY PIPE JOINTS.
- (4) RESURFACE ALL TRENCH WITHIN PAVED AREA TO MEET LOS ANGELES COUNTY ROAD DEPT. REQUIREMENTS IN ACCORDANCE WITH PERMIT.
- (5) ENCASE FOUR FEET OF SEWER AT POINTS OF INTERFERENCE WITH POLES AS PER S-a-119.
- (6) ALL STRUCTURES SHALL BE RECTANGULAR SHALLOW MANHOLE, S-a-130.
- (7) STOPPERS TO BE INSTALLED WITH JOINT COMPOUND BY MANUFACTURER AT THIS PLANT SPEC'S. SEC. 33, 48.

NOTE: NO REPRESENTATIVE OF THE COUNTY ENGINEER WILL SURVEY OR LAY OUT ANY PORTION OF THE WORK. THE OWNER OR HIS AUTHORIZED REPRESENTATIVE SHALL FURNISH THE COUNTY ENGINEER WITH GRADE SHEETS AND STATIONS OF ALL HOUSE CONNECTIONS AND Y BRANCHES AND SHALL PROVIDE STAKES FOR THEM AT THEIR PROPER LOCATIONS WITH STATIONING PLAINLY MARKED. ANY CHANGE OF LOCATION SHALL BE REQUESTED IN WRITING BY THE OWNER OR HIS REPRESENTATIVE. NO REVISIONS SHALL BE MADE IN THESE PLANS WITHOUT APPROVAL OF THE COUNTY ENGINEER.

PROFILE, ALIGNMENT AND GRADE OF
SANITARY SEWERS
 TO BE CONSTRUCTED IN THE PROPERTY OF
THE RHEEM MANUFACTURING
WHITTIER, CALIFORNIA.
INDUSTRIAL WASTE LINE

CHRISTENSEN AND LYON,
 3434 HARLAN STREET
 OAKLAND, CALIFORNIA
 P.C. NO. 1798

PREPARED IN THE OFFICES OF

ROGERS ENGINEERING COMPANY
 16 BEALE STREET, SAN FRANCISCO, CALIFORNIA
 BY: *[Signature]* DATE: *[Date]*

SHEET 1 OF 1 SHEETS SCALE: VERT. 1" = 4' HORIZ. 1" = 40'
 W.S. - 37

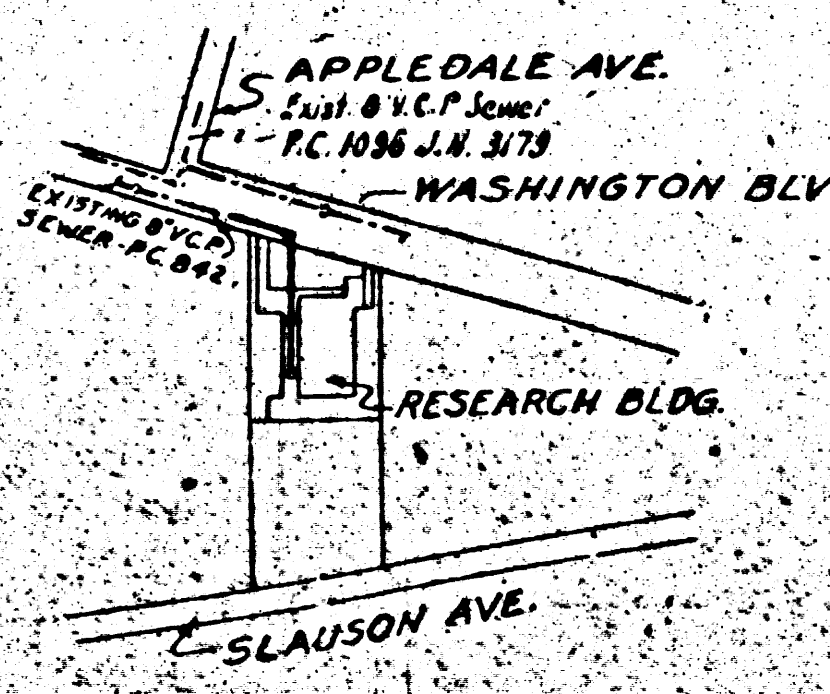
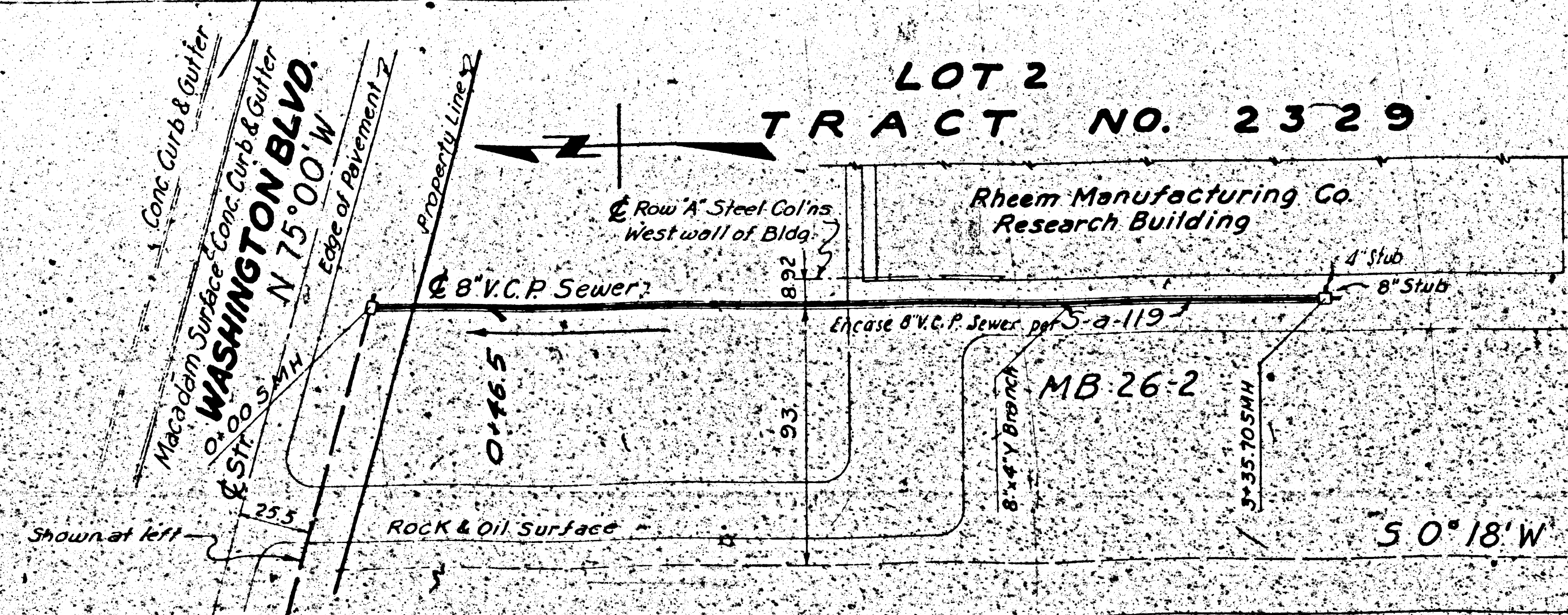
NOTE: GRADES TO WHICH THIS IMPROVEMENT IS TO BE CONSTRUCTED ARE SHOWN ON PLANS AND PROFILE GRADE POINTS FOR TOP OF CURB, CENTER LINE OF STREET OR CENTER LINE OF ALLEY AND SHOWN CIRCLES ON PROFILES. AT ALL POINTS BETWEEN DESIGNATED POINTS THE GRADE SHALL BE SO ADJUSTED TO CONFORM TO A STRAIGHT LINE DRAWN BETWEEN SAID DESIGNATED POINTS. ELEVATIONS ARE IN FEET ABOVE U.S.G.S. DATUM OR MEAN SEA LEVEL. THIS DRAWING AND THE DATA HEREON ARE HEREBY MADE A PART OF THE SPECIFICATIONS. WORK SHALL BE CONSTRUCTED ACCORDING TO SPECIFICATIONS ON FILE IN THE OFFICE OF THE COUNTY ENGINEER AND SHALL BE PROSECUTED ONLY IN THE PRESENCE OF THE COUNTY ENGINEER. BEFORE WORK CAN BE STARTED, THE CONTRACTOR MUST OBTAIN A PERMIT TO EXCAVATE COUNTY STREETS FROM THE L.A. COUNTY ROAD DEPT., 108 N. SECOND STREET, AND MAKE A DEPOSIT WITH THE COUNTY ENGINEER, 828 L.A. COUNTY ENGINEERING BLDG., SUFFICIENT TO COVER THE COST OF CONSTRUCTION INSPECTION AND RECORD PLANS.

APPROVAL OF THIS PLAN BY THE COUNTY OF LOS ANGELES DOES NOT CONSTITUTE A GUARANTEE AS TO THE ACCURACY OF THE LOCATION OF, OR THE EXISTENCE OR NON-EXISTENCE OF ANY UTILITY, PIPE, OR STRUCTURE WITHIN THE LIMITS OF THIS PROJECT. (THIS NOTE APPLIES TO ALL SHEETS OF THIS PROJECT.)

COUNTY OF LOS ANGELES, CALIFORNIA
 APPROVED BY: *[Signature]* COUNTY ENGINEER
 APPROVED BY: *[Signature]* COUNTY ENGINEER

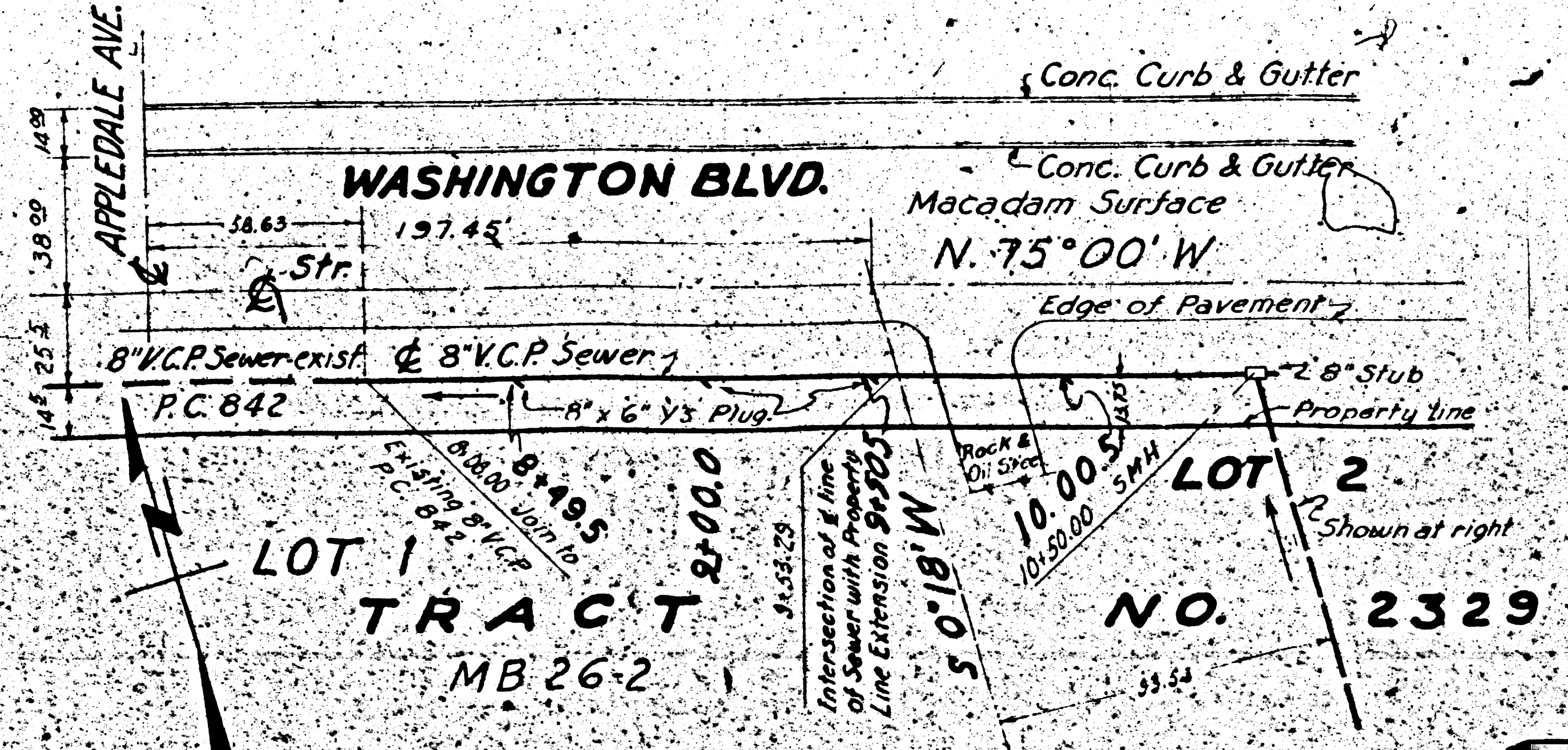
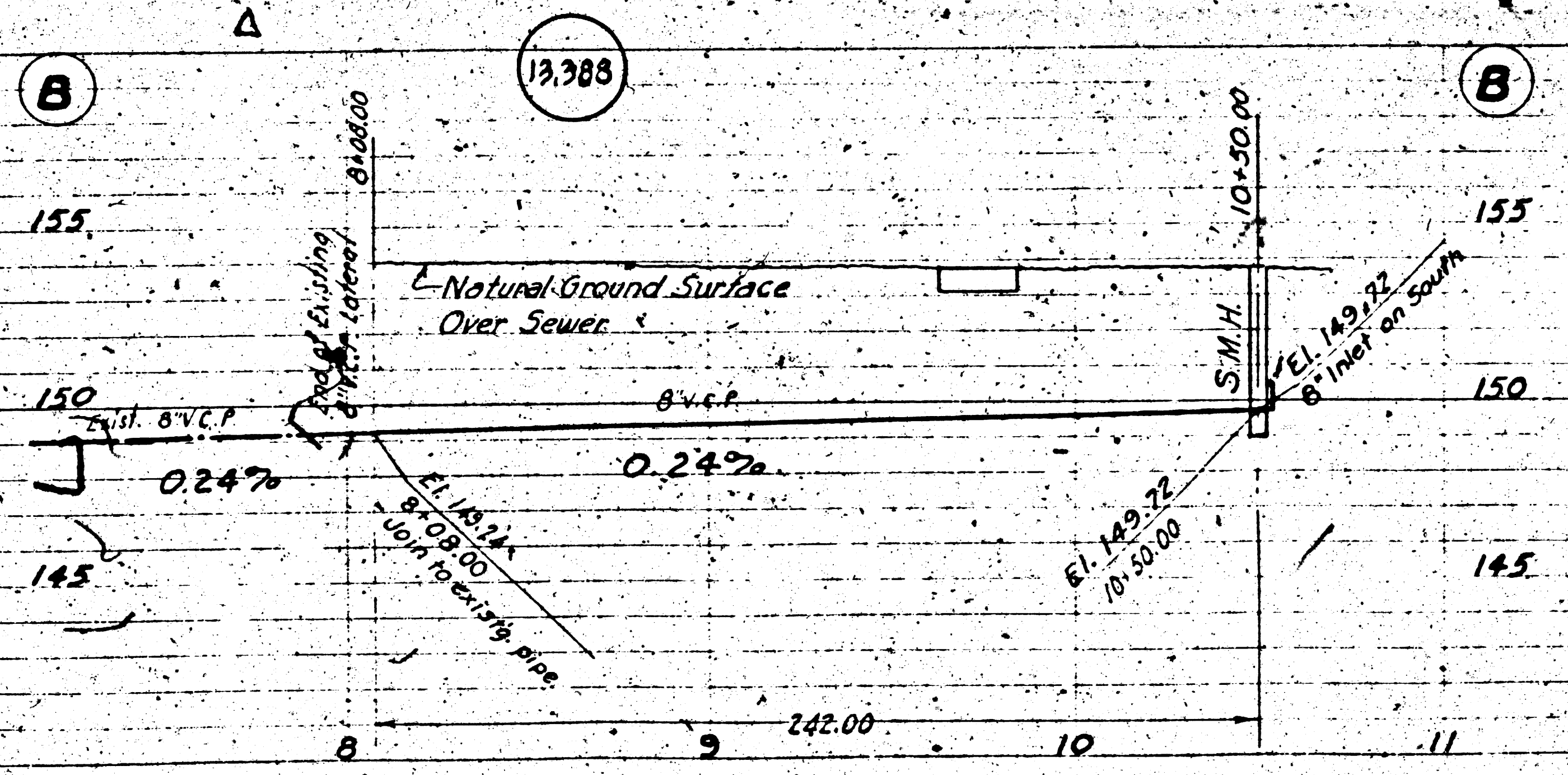
APPROVED FOR THE COLLECTION AND PRETREATMENT OF LIQUID INDUSTRIAL WASTE ONLY
[Signature] DATE: 9/27/51
 INDUSTRIAL WASTE ENGINEER, OFFICE OF COUNTY ENGINEER

CHECKED BY: *[Signature]*
 OFFICE OF COUNTY ENGINEER, M.E.G.



8" V.C.P. @ 0.20% S.M. per A.P.C. 6/18/51

BM - R.R. SPIKE: ELEV. 155.56
WASHINGTON BLVD. &
APPLEDALE AVE. INTERSECTION
OF CENTER LINES.



LOT 1
TRACT
MB 26-2

LOT 2
NO. 2329

Shown at right