

C.F.
B.M. Y E-33 Shown
22,18'

B.M. Y F-33, Elev. = 37.992, F.B. 1761, pg. 87
214TH St & Figueroa St., N.E. Cor.
L & N in curb, 19' E. of E. end C.R.

LOMITA BUILDING DISTRICT (7L)

COUNTY IMPROVEMENT NO. 1800

C.I. 1800
PAGE 1

PROFILE, ALIGNMENT AND GRADE OF
SANITARY SEWERS
TO BE CONSTRUCTED IN
FIGUEROA STREET
AND OTHER RIGHTS OF WAY

22,183

(3)

ONE SHEET

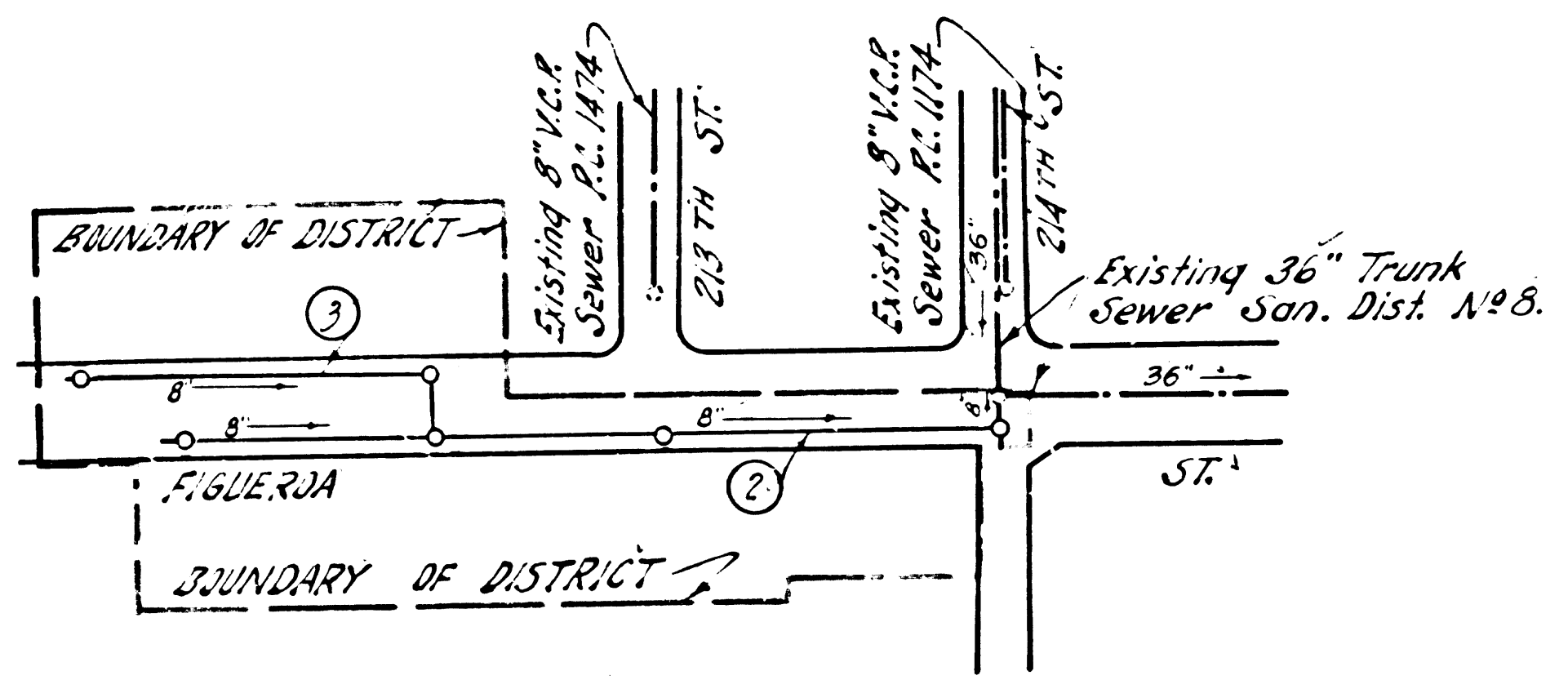
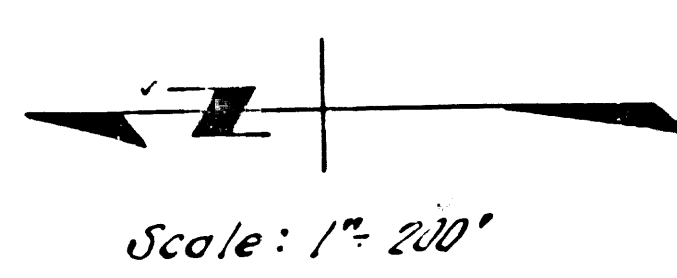
SCALE VERT. 1" = 4'
HORIZ. 1" = 40'
JULY 1955
COUNTY OF LOS ANGELES, CALIFORNIA

WILLIAM J. FOX
COUNTY ENGINEER
W. J. Fox

APPROVED *A. P. Collins*
SANITATION ENGINEER

APPROVED A. M. RAWN
CHIEF ENGINEER OF PUBLIC
SANITATION DISTRICT NO. 3
BY *A. M. Rawn*
OFFICE ENGINEER

USE STANDARD 24" VITRIFIED CLAY PIPE EXCEPT AS NOTED
USE CEMENT MORTAR FOR ALL VITRIFIED CLAY PIPE JOINTS
CONSTRUCT HOUSE LATERALS WITH INVERTS AT PROPERTY
LINE 6 FEET BELOW GRADE OF CENTER LINE OF STREET
EXCEPT AS NOTED
ALL STRUCTURES SHALL BE BRICK SEWER STRUCTURES AS PER
PLAN NO. S-a-104
USE STANDARD MANHOLE FRAMES AND COVERS
AS PER PLAN NO. S-a-117
(6) FIGURES IN CIRCLES AT END OF HOUSE LATERALS INDICATE DEPTH BELOW
GRADE OF CENTER LINE OF STREET
CONSTRUCTION IN STATE HIGHWAY SHALL CONFORM WITH STATE HIGHWAY PERMIT.
USE FORMULA NO. 1 SEC. 51 OF SPECIFICATIONS TO COMPUTE
ALLOWABLE LEAKAGE



FOR LEGEND
SEE PLAN NO. S-a-84

NOTE:
GRADES TO WHICH THIS IMPROVEMENT IS TO BE CONSTRUCTED ARE SHOWN ON PLANS AND PROFILES.
GRADE POINTS FOR TOP OF CURB, CENTER LINE OF STREET OR CENTER LINE OF ALLEY ARE SHOWN BY
CIRCLES ON PROFILES. AT ALL POINTS BETWEEN DESIGNATED POINTS THE GRADE SHALL BE ESTABLISHED
SO AS TO CONFORM TO A STRAIGHT LINE DRAWN BETWEEN SAID DESIGNATED POINTS.
ELEVATIONS ARE IN FEET ABOVE U. S. C. & G. DATUM OR MEAN SEA LEVEL.
UNIT PRICES FOR ADDITIONAL WORK WHICH MAY BE REQUIRED BUT WHICH CANNOT BE ASCERTAINED
IN ADVANCE SHALL BE SUBMITTED IN THE PROPOSAL.
THIS DRAWING AND THE DATA HEREON ARE HEREBY MADE A PART OF THE SPECIFICATIONS

REFERENCES

W. S. 28	DESIGNED KAUFFMAN - ACEVEDO June 1955
A. B. 775-1	TRACED SCOTT - YEE June 1955
F. B. 1761	CHECKED M. V. BELL July 1955

Checked 2-10-56 *McLennan*

W. J. FOX 8/22/55
A. M. RAWN 8/24/55

Trim Line

22,184

