

TEMPLE CITY - 3  
DOUBLE SCALE 18,399

P.C. 1807  
PROFILE, ALIGNMENT AND GRADE OF J.N. 0947.72  
Page 1

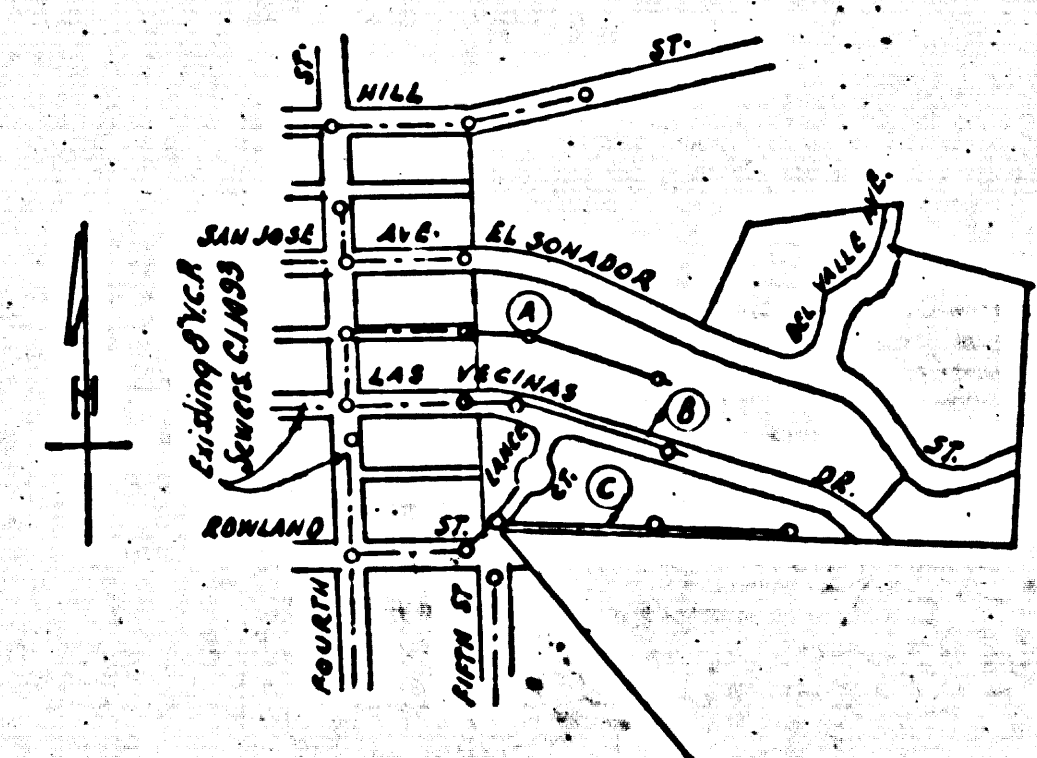
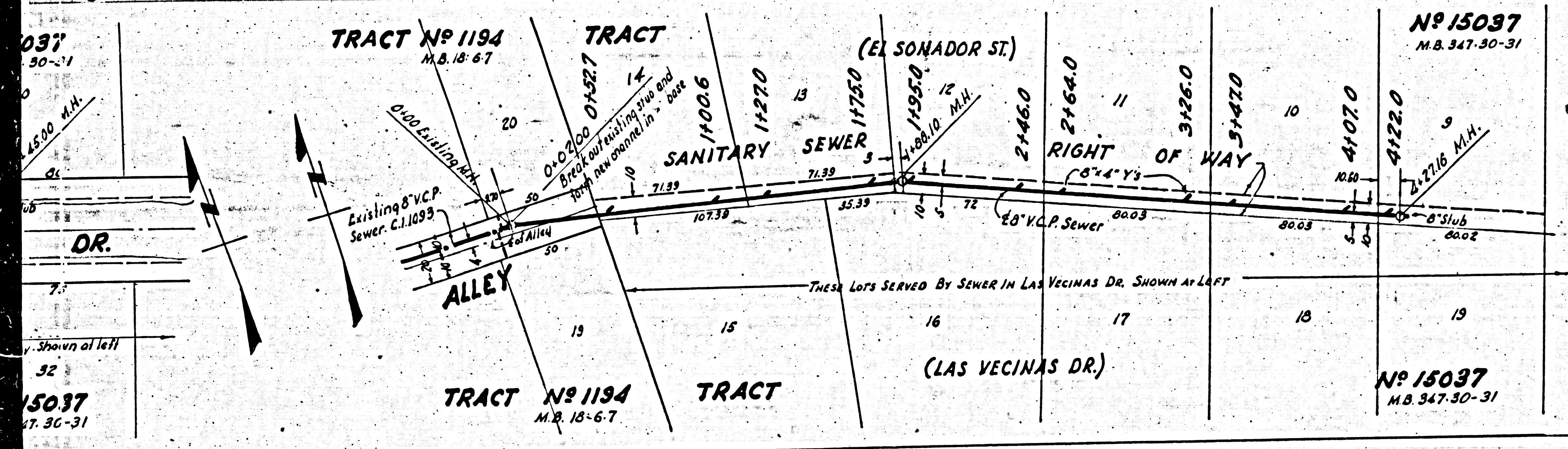
**SANITARY SEWERS**  
TO BE CONSTRUCTED IN  
**LAS VECINAS DRIVE**  
BETWEEN THE WESTERN LINE OF TRACT NO. 15037 AND A POINT 450 FT. EASTERLY THEREFROM  
**SANITARY SEWER RIGHTS OF WAY (3)**  
IN TRACT NO. 15037

PRIVATE CONTRACT NO. 1807  
W.S. 38

SCALE: VERT. 1" = 8'  
HORIZ. 1" = 40'

ONE SHEET  
PREPARED IN THE OFFICE OF  
WM. G. BONGARDT  
City Engineer

USE STANDARD MANHOLE FRAME AND COVER 5'-0" DIA.  
USE STANDARD STRENGTH PIPE EXCEPT AS NOTED  
USE CEMENT MORTAR FOR ALL VITRIFIED CLAY PIPE JOINTS  
RESURFACE ALL TRENCH WITHIN PAVED AREA TO MEET LOS ANGELES COUNTY ROAD DEPT. REQUIREMENTS.  
CONSTRUCT HOUSE CONNECTIONS WITH INVERT AT CURB LINE  
6 FEET BELOW GRADE OF E.O.P. ST. EXCEPT AS NOTED  
ENCASE FOUR FEET OF SEWER AT POINTS OF INTERFERENCE WITH POLES 5'-0" DIA.  
ALL STRUCTURES SHALL BE BRICK SEWER STRUCTURES - 5'-0" DIA.  
CONSTRUCT TOPS OF ALL STRUCTURES IN RIGHTS OF WAY 6" ABOVE FINISHED GRADE.  
STOPPERS TO BE INSTALLED WITH JOINT COMPOUND BY MANUFACTURER AT HIS PLANT. SPEC'S SEC. 33, 44.  
Note: No representative of the County Engineer will survey or lay out any portion of the work. The owner or his authorized representative shall furnish the County Engineer with grade sheets and stations of all House Connections and T Branches and shall provide stakes for them at their proper locations with measuring plainly marked. Any change of location shall be requested in writing by the owner or his representative. No revisions shall be made in this plan without approval of the County Engineer.  
INSTALL WIRE AND TAG ON ALL CONNECTIONS. PER SPEC'S SEC. 48



COLLECT CHARGES  
AS INDICATED  
checked 7-1-54 W. W. W.

FOR LEGEND  
SEE PLAN NO. 5-0-64

NOTE: GRADES TO WHICH THIS IMPROVEMENT IS TO BE CONSTRUCTED ARE SHOWN ON PLAN AND PROFILE. GRADE POINTS FOR TOP OF CURB, CENTER LINE OF STREET OR CENTER LINE OF ALLEY ARE SHOWN BY CIRCLES ON PROFILE. AT ALL POINTS BETWEEN DESIGNATED POINTS THE GRADE SHALL BE ESTABLISHED SO AS TO MAINTAIN TO A STRAIGHT LINE GRADE BETWEEN SAID DESIGNATED POINTS. ELEVATIONS ARE IN FEET ABOVE U.S.C. DATUM OR MEAN SEA LEVEL. THIS DRAWING AND THE DATA HEREON ARE HEREBY MADE A PART OF THE SPECIFICATIONS. WORK SHALL BE CONSTRUCTED ACCORDING TO SPECIFICATIONS ON FILE IN THE OFFICE OF THE COUNTY ENGINEER AND SHALL BE PROSECUTED ONLY IN THE PRESENCE OF THE COUNTY ENGINEER. BEFORE WORK CAN BE STARTED THE CONTRACTOR MUST OBTAIN A PERMIT TO EXCAVATE IN COUNTY STREETS FROM THE LA COUNTY ROAD DEPT., 101 S. G. ENGINEERING BLDG., AND MAKE A DEPOSIT WITH THE COUNTY ENGINEER, 818 S. LA. CO. ENGINEERING BLDG., SUFFICIENT TO COVER THE COST OF CONSTRUCTION INSPECTION AND RECORD PLANS. THE APPROVAL OF THIS PLAN BY THE COUNTY OF LOS ANGELES DOES NOT CONSTITUTE A REPRESENTATION AS TO THE ACCURACY OF THE LOCATION OF, OR THE EXISTENCE OR NON-EXISTENCE OF ANY UNDERGROUND UTILITY OR STRUCTURE WITHIN THE LIMITS OF THIS PROJECT.

COUNTY OF LOS ANGELES, CALIFORNIA

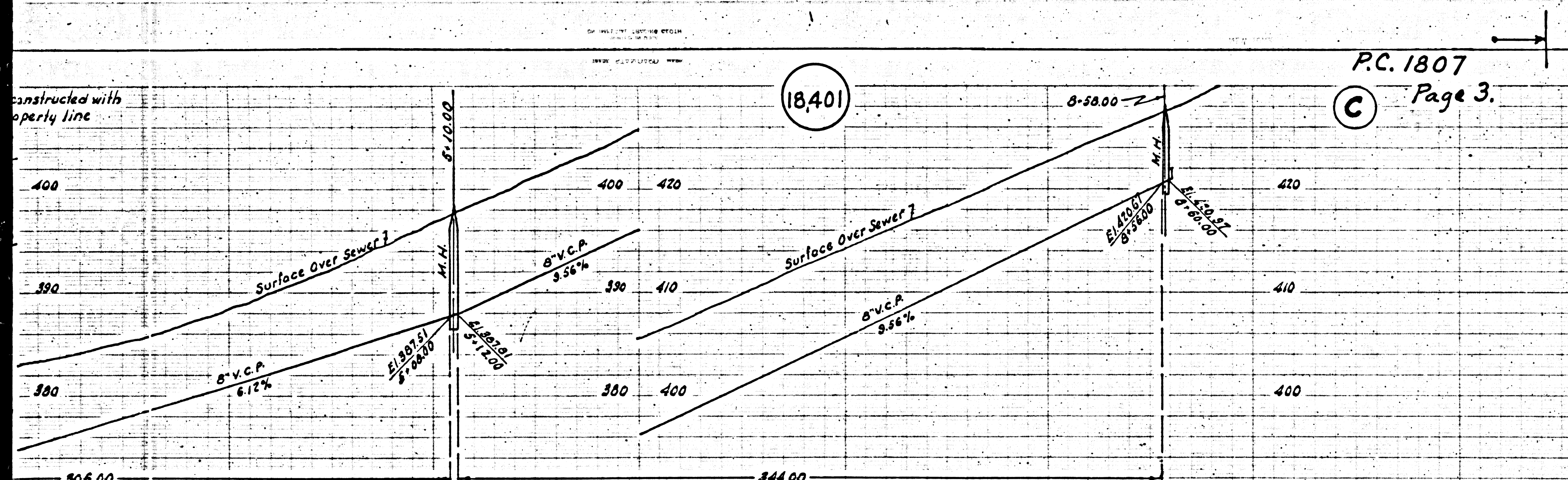
APPROVED BY *Wm. G. Bongardt* COUNTY ENGINEER

REVISION CHECKED *W. W. W.* 4-7-54  
OFFICE OF COUNTY ENGINEER, 818 S. LA. CO. ENGINEERING BLDG.  
R/W Changed - Sec. C - 10' Wide

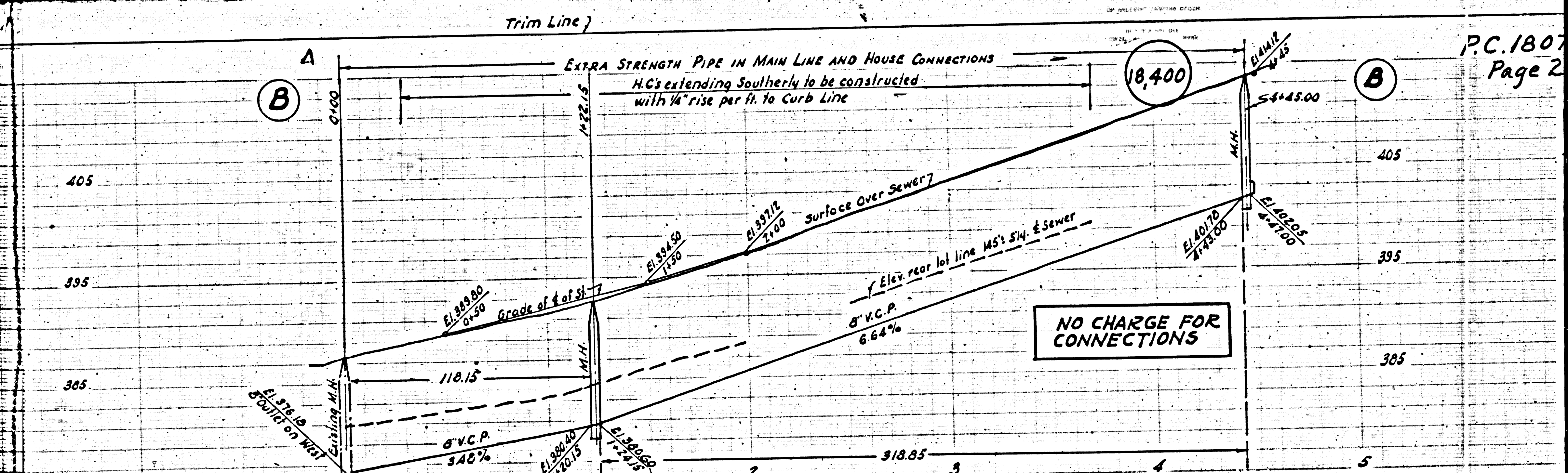
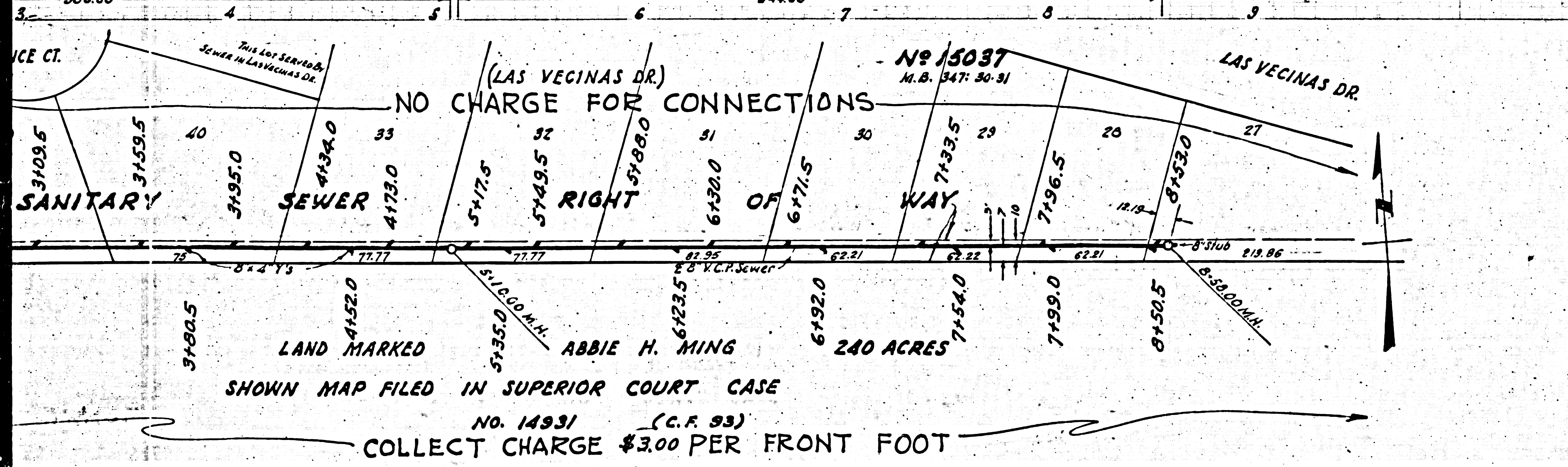
CHECKED BY *H. L. Swales* 8-31-1951  
OFFICE OF COUNTY ENGINEER, 818 S. LA. CO. ENGINEERING BLDG.

Before breaking into any existing...  
and before final acceptance of this...  
County Sanitation District should be notified...  
in order that required inspection may be made

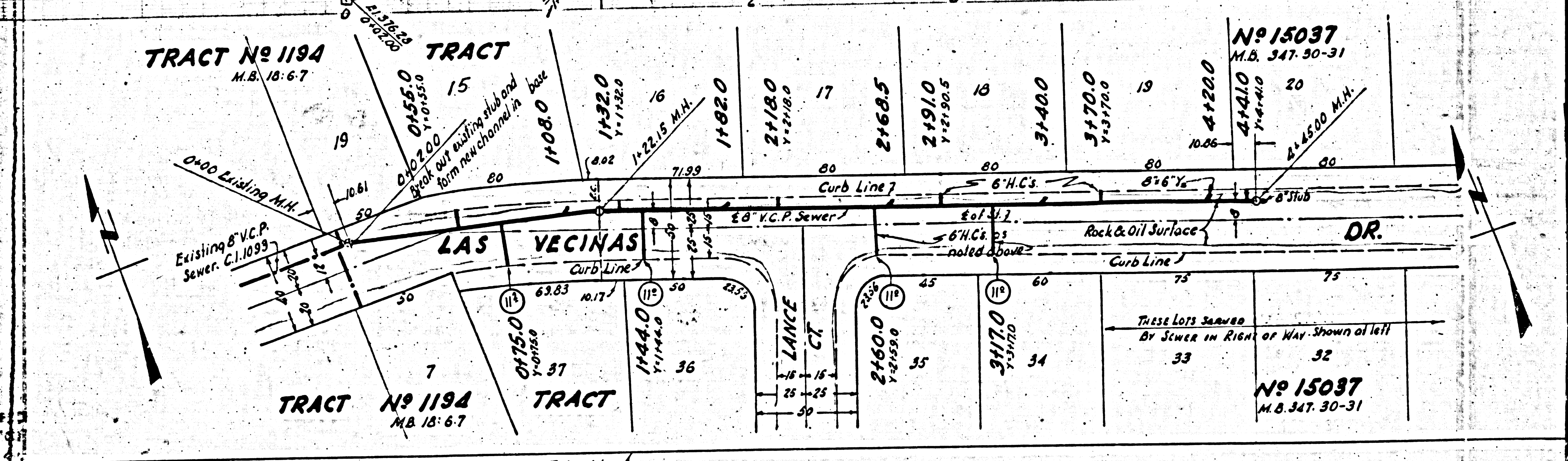
ONE SHEET  
PREPARED IN THE OFFICE OF  
WM. G. BONGARDT  
City Engineer

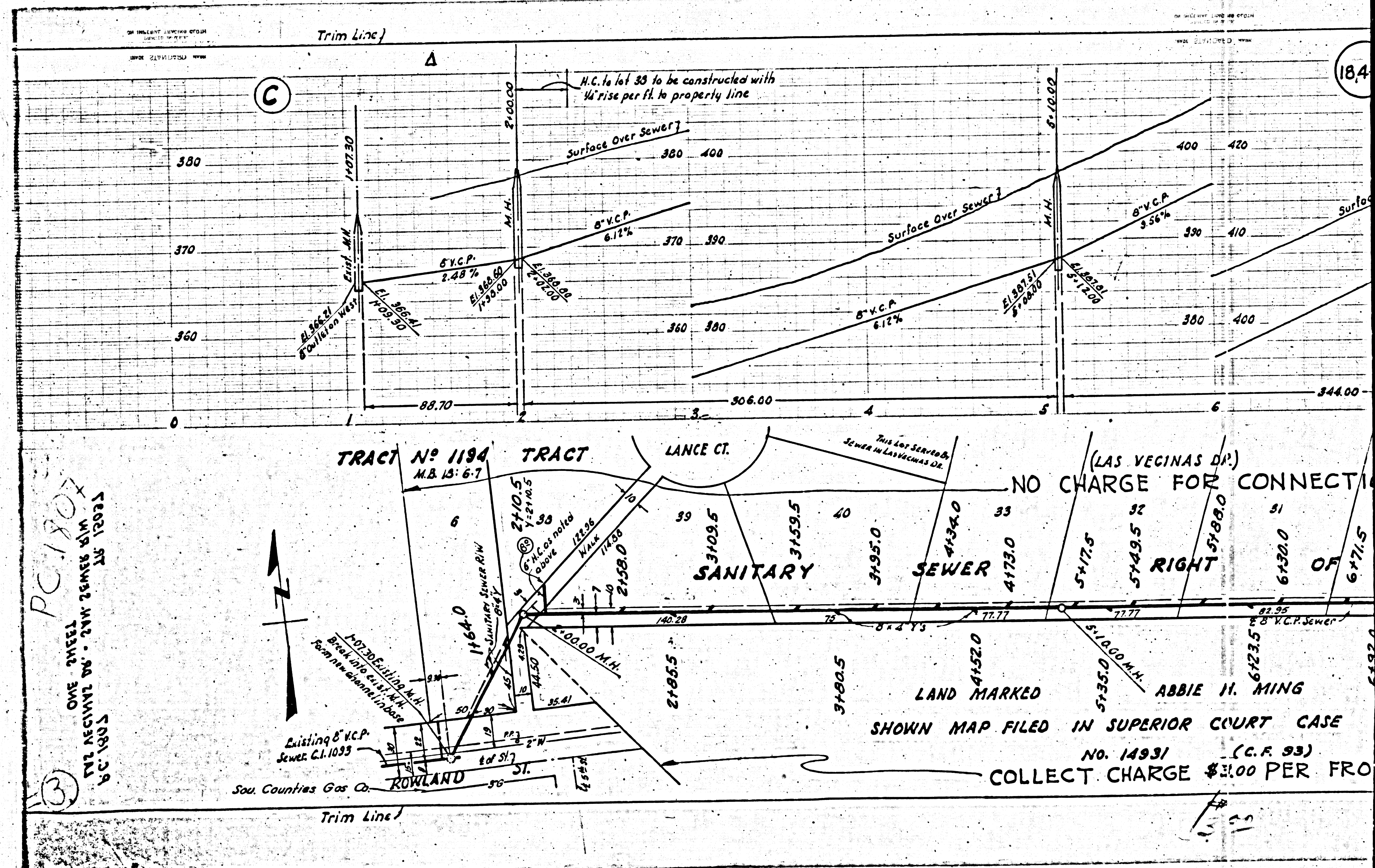


P.C. 1807  
Page 3.



P.C. 1807  
Page 2.





PC 1807  
 ONE SHEET  
 THE RECEIPT BY - JIM JAMES SIM  
 10/18/03

