

PWFB 1811

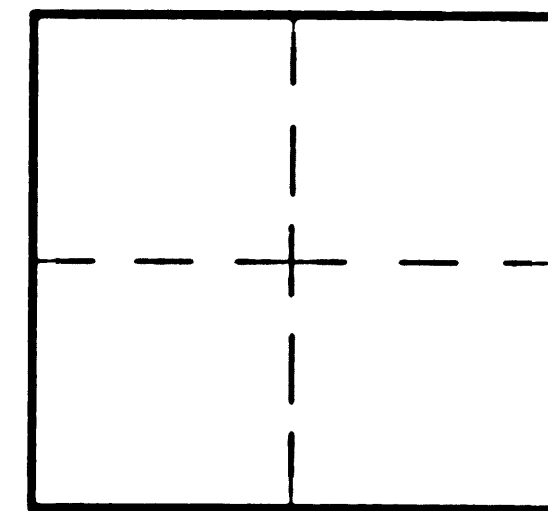
CORNER RECORD

Document Number 95

City of LOS ANGELES

County of Los Angeles, California

Brief Legal Description Intersection of Sherman Way and Lubao Ave.



CORNER TYPE

Govt. Corner Control
Meander Property
Rancho Other
Date of Survey 9/23/05

COORDINATES (Optional)

N. _____
E. _____
Zone _____ NAD27 NAD83
NAD83 Epoch _____
Elev. _____
Vert. Datum: NGVD29 NAVD88
Meas. Units: Metric Imperial

Corner - Left as found Found & tagged Established Reestablished Rebuilt

Identification and type of corner found: Evidence used to identify or procedure used to establish or reestablish the corner:

FOUND TIES PER C.E.F.B. 186 - 113, PAGE 116

A description of the physical condition of the monument as found and as set or reset:

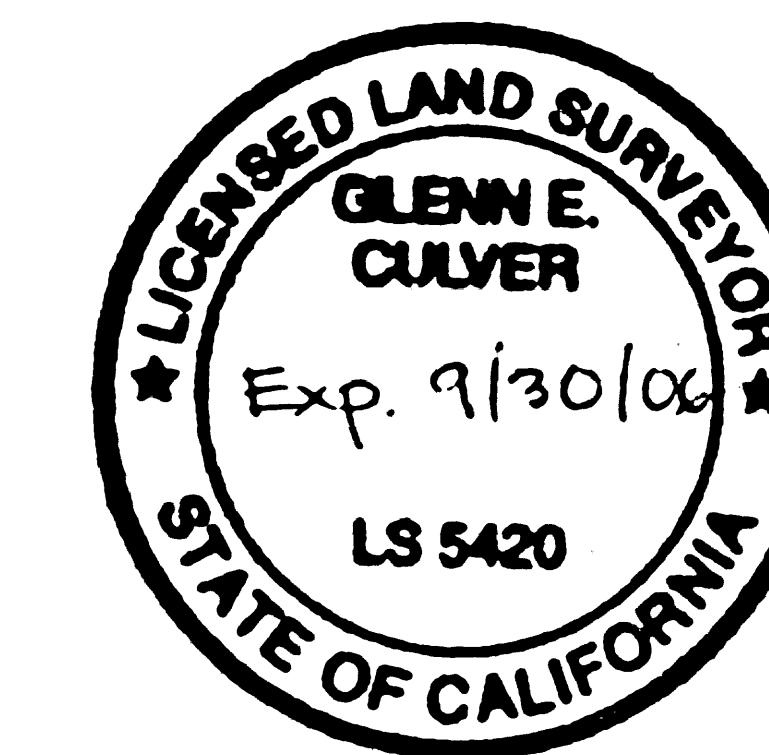
SET PIKE & WASHER TAGGED L.S. 5420 (SEE SKETCH ON REVERSE)

SURVEYOR'S STATEMENT

This Corner Record was prepared by me or under my direction in conformance

with the Land Surveyors' Act on NOVEMBER 15 2005

Signed [Signature] P.L.S. or R.C.E. No. 5420



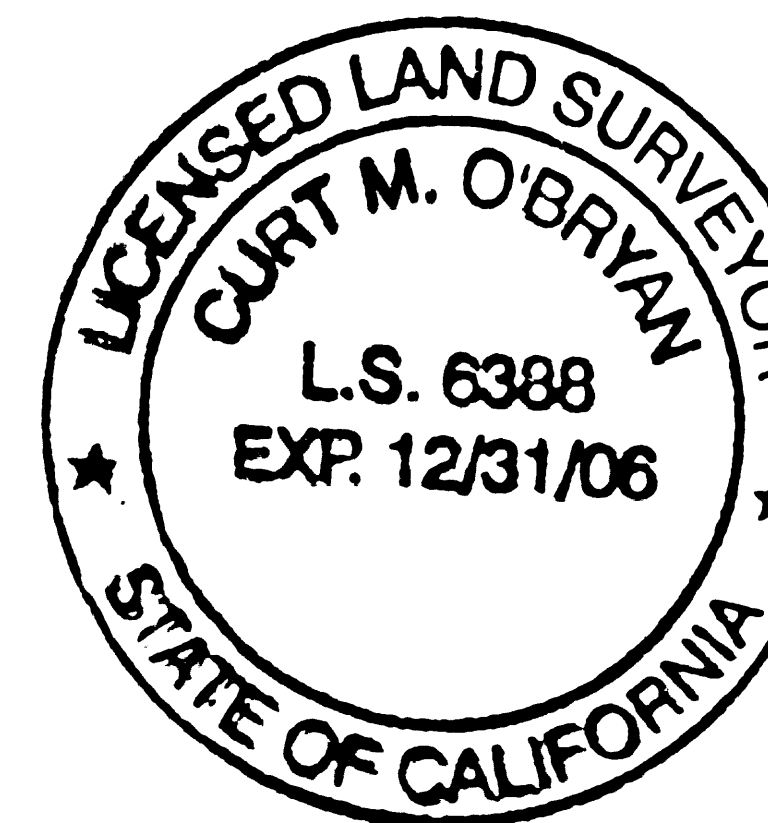
COUNTY SURVEYOR'S STATEMENT

This Corner Record was received NOV 22 2005

and examined and filed DEC 19 2005

Signed [Signature] P.L.S. or R.C.E. No. 6388

Title: DEPUTY COUNTY SURVEYOR



County Surveyor's Comment _____

Enb 12-12-5