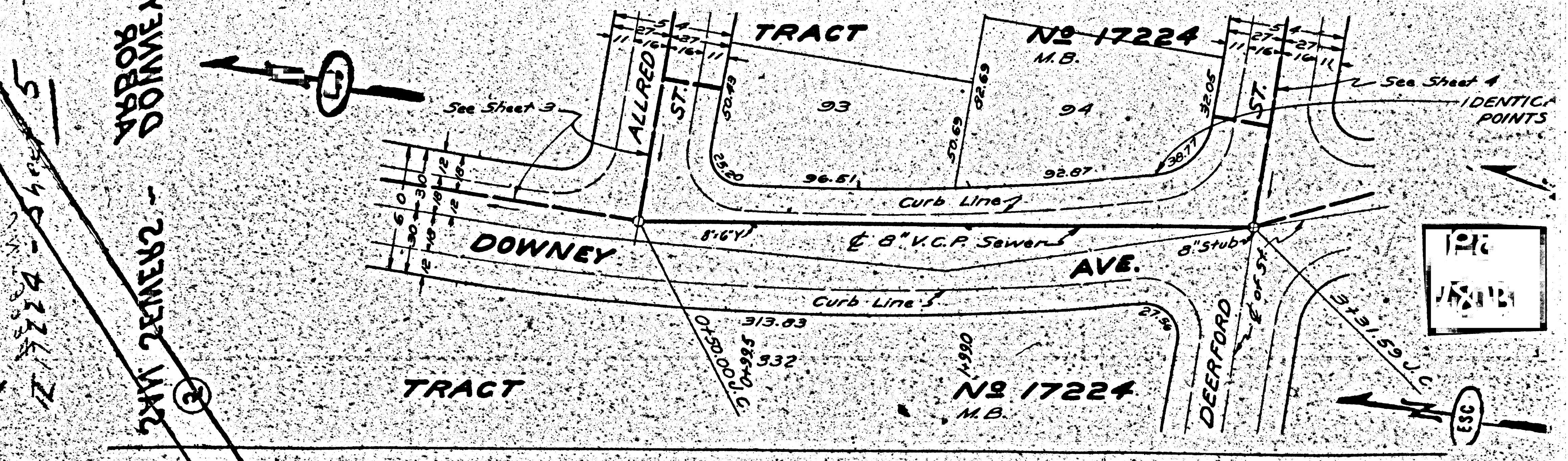
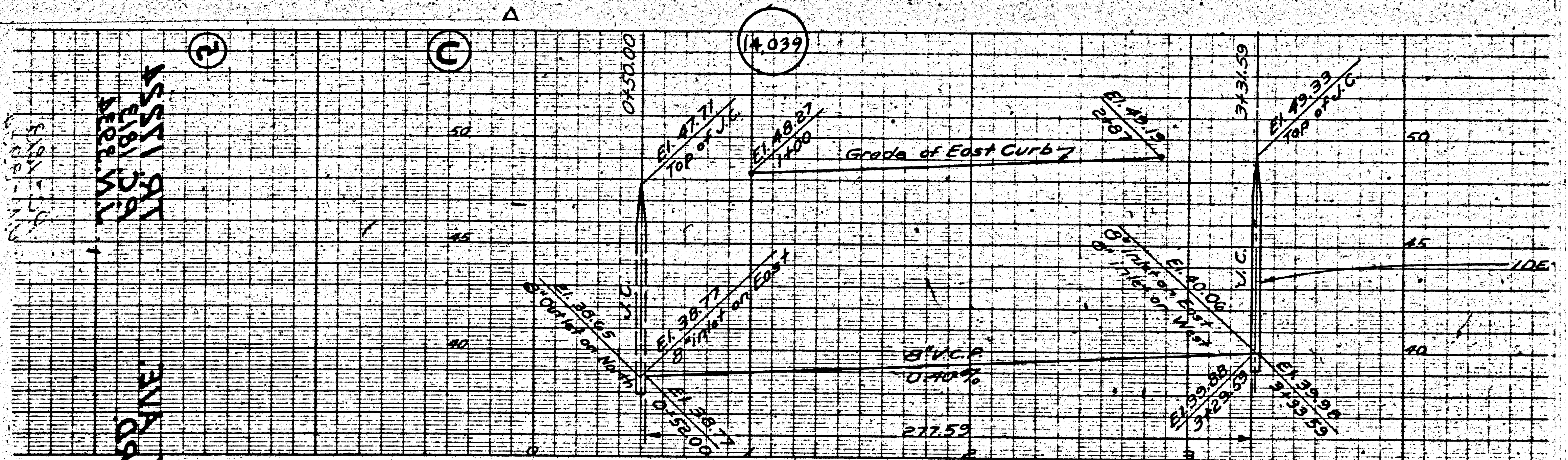


21  
101E



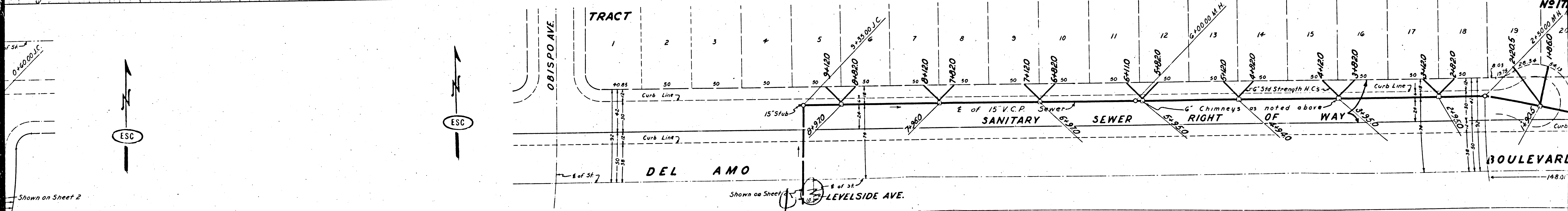
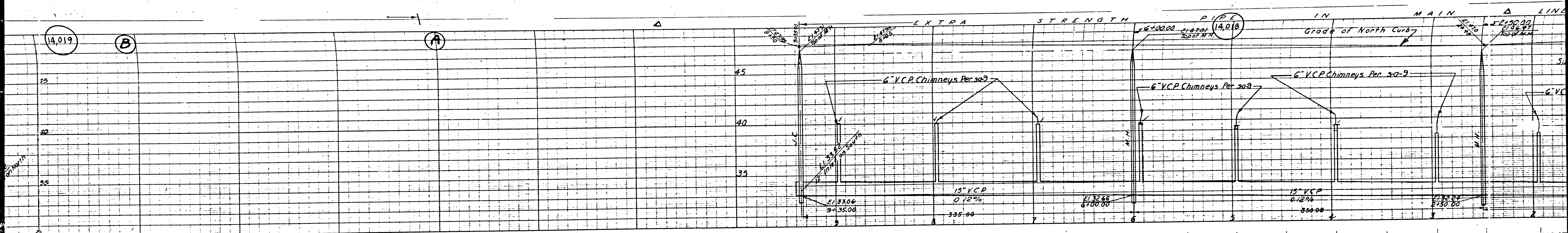




TRACT  
 DOWNEY AVE.  
 DEERFORD ST.  
 ALLRED ST.  
 93  
 94  
 17224 M.B.  
 17224 M.B.

See Sheet 3  
 See Sheet 4  
 IDENTICAL POINTS  
 1216  
 17224





14,019

B

A

14,018

A

ESC

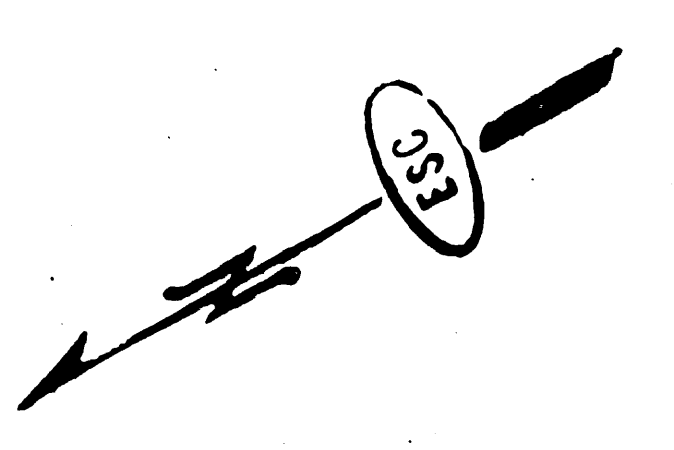
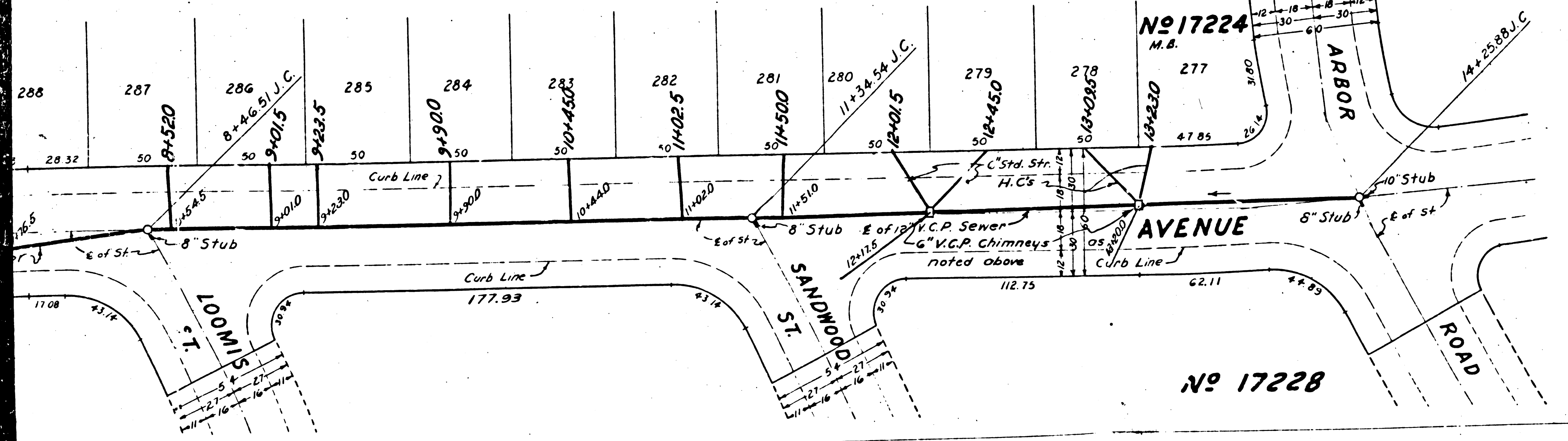
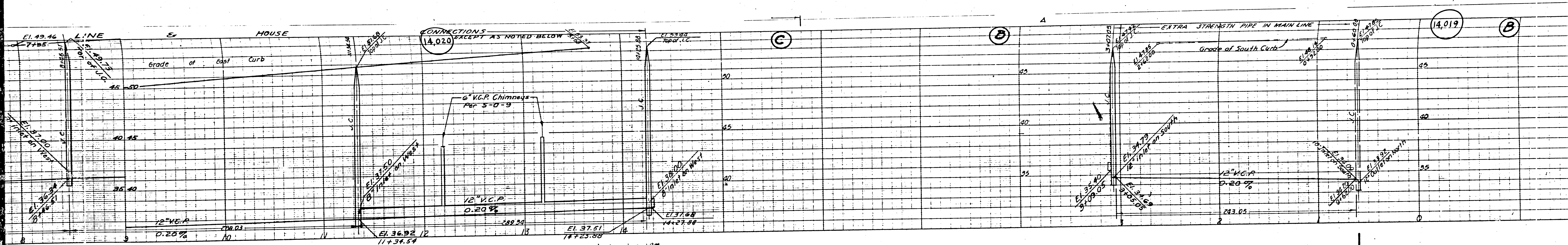
ESC

Shown on Sheet 2

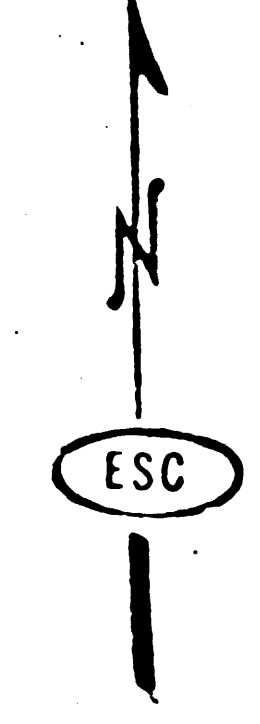
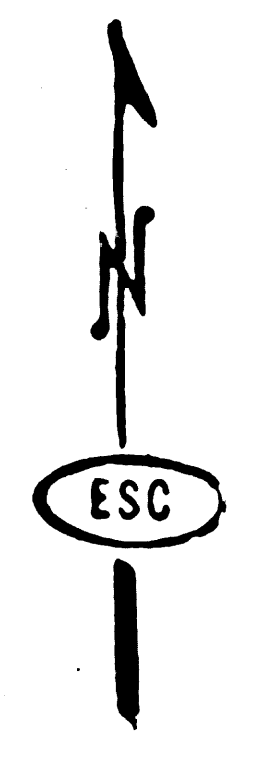
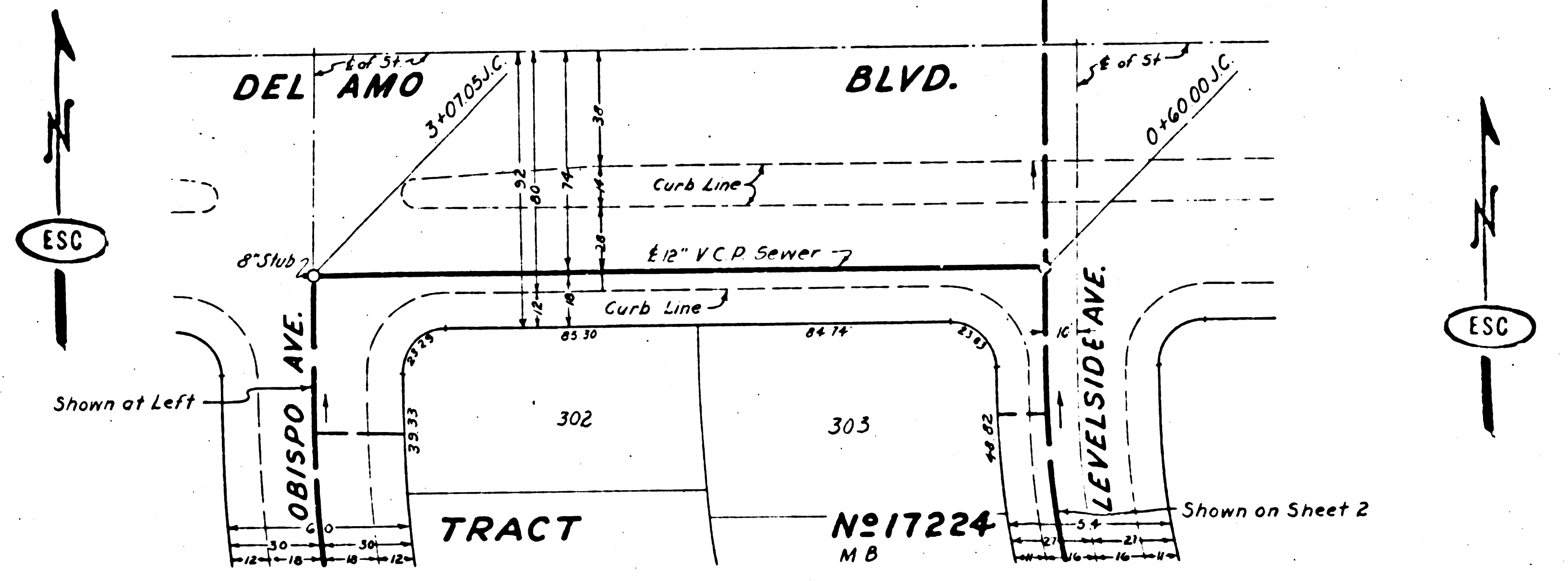
Shown on Sheet 1

No 17

14801

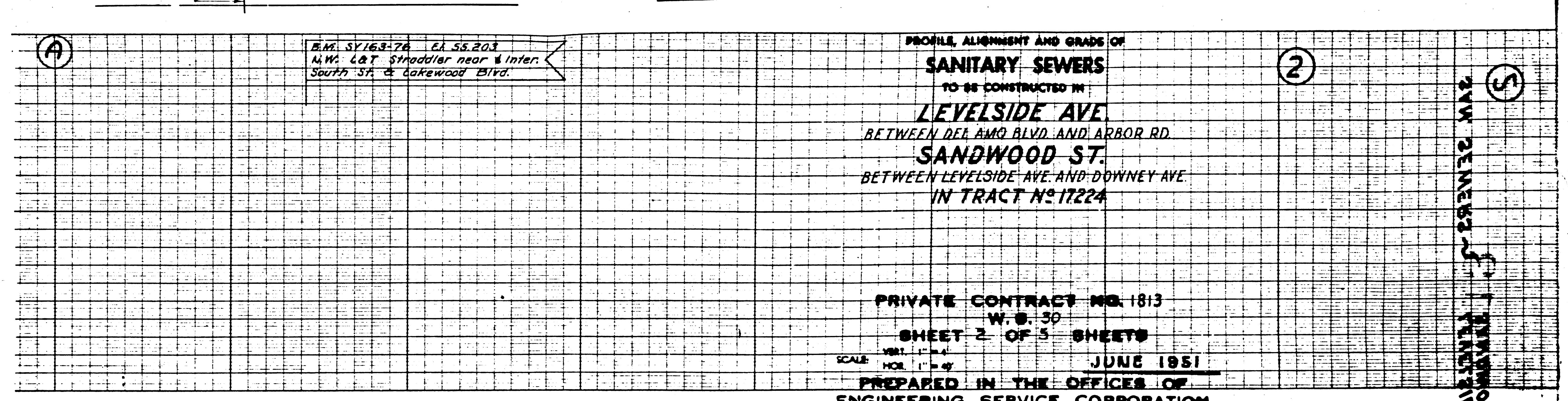
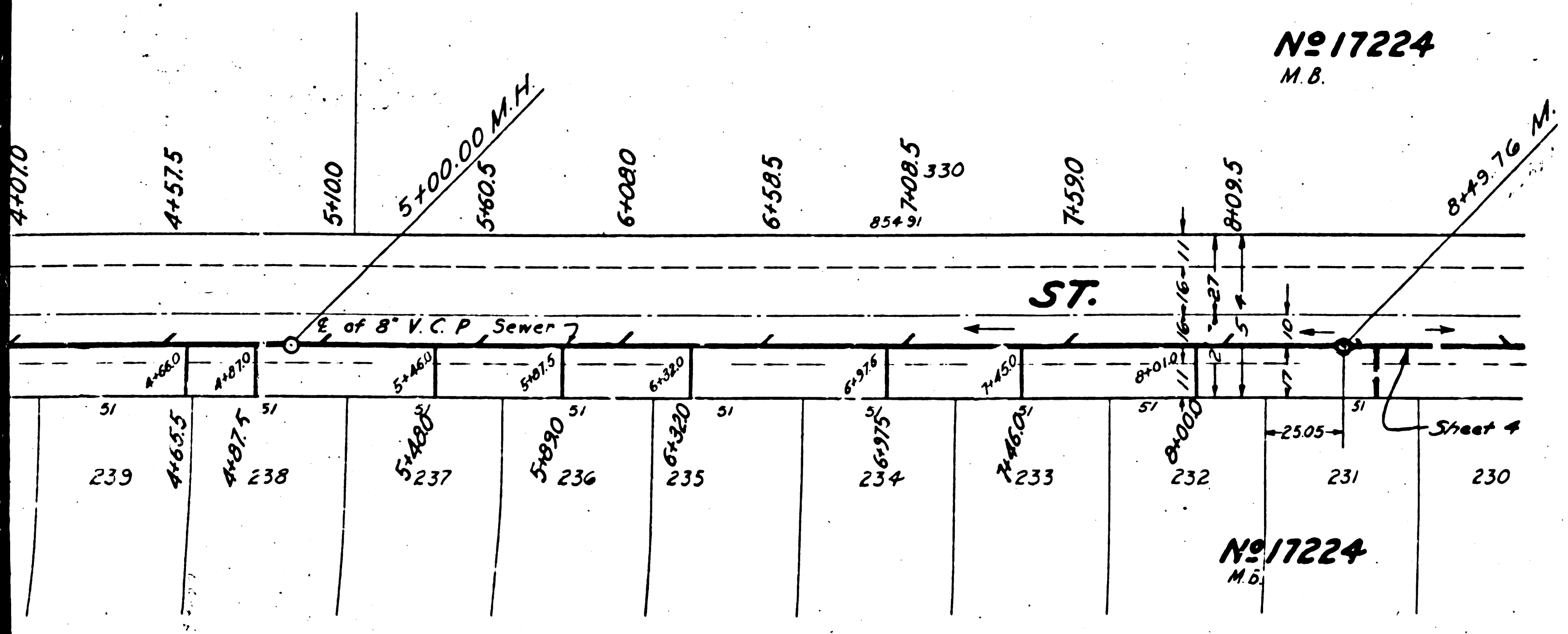
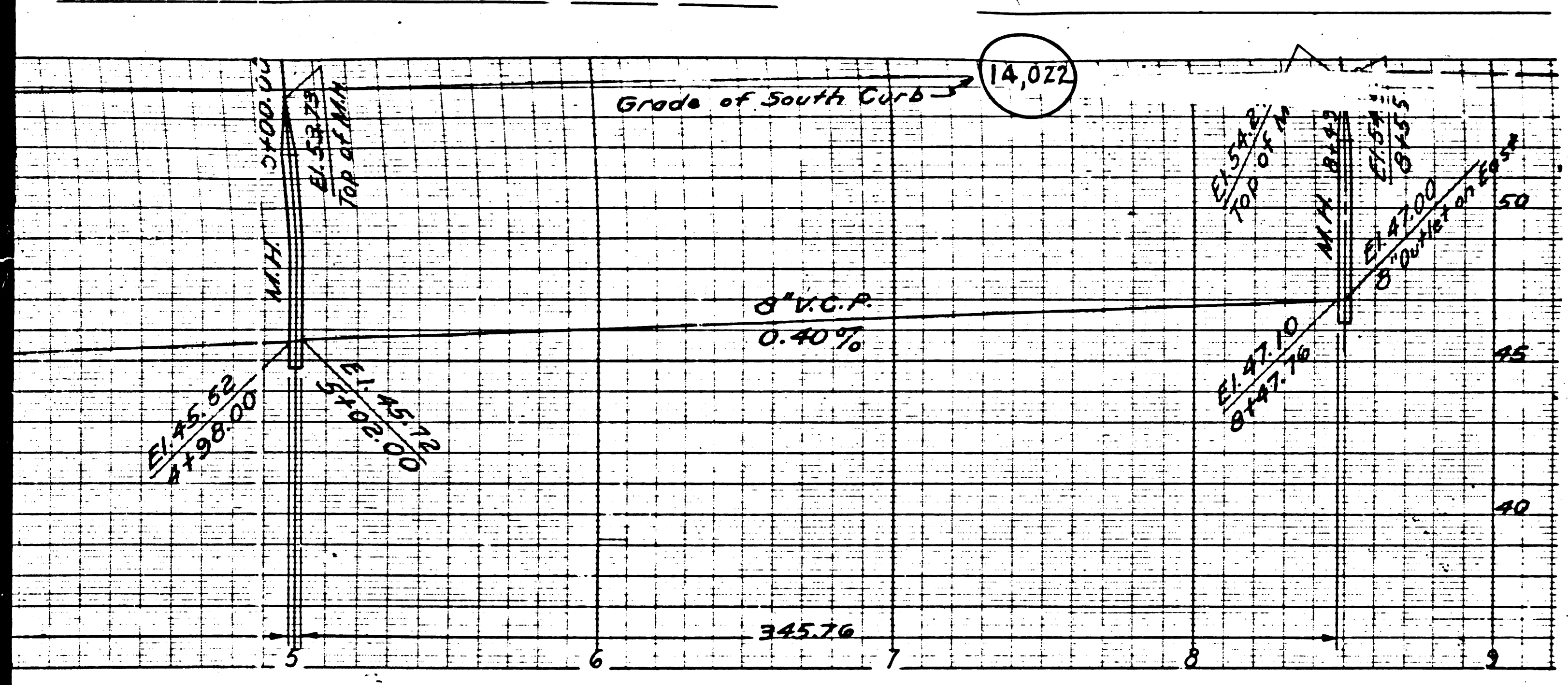


(12)









**ENGINEERING SERVICE CORPORATION**  
1127 W WASHINGTON BLVD.  
LOS ANGELES 15 CALIF. PR. 7281

REVISIONS

Changed grade on Sandwood St. 8-18-51	TRACED BY G.W.K.
Changed pipe size & grade on Levelside Ave.	DESIGNED BY K.S.
	CK'D BY
	SUBMITTED

OUR STRUCTURES CK'D

W.D.M. D.W.G. DATE SCALE L.S.

5977-124 JUNE 1951 1"=4' 1"=4'

REVISION CHECKED *Richard E. Kuhn* 9-30-51  
OFFICE OF COUNTY ENGINEER  
REG. C.E. NO. 7860

PROFILE, ALIGNMENT AND GRADE OF  
**SANITARY SEWERS**  
TO BE CONSTRUCTED IN  
**LEVELSIDE AVE**  
BETWEEN DEL AMO BLVD. AND ARBOR RD.  
**SANDWOOD ST.**  
BETWEEN LEVELSIDE AVE. AND DOWNEY AVE.  
IN TRACT NO. 17224

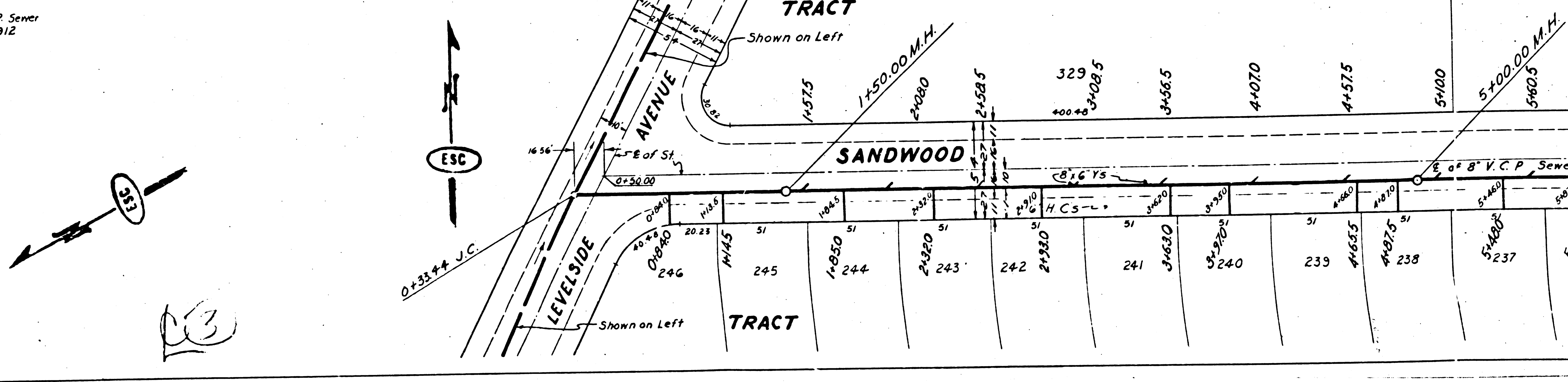
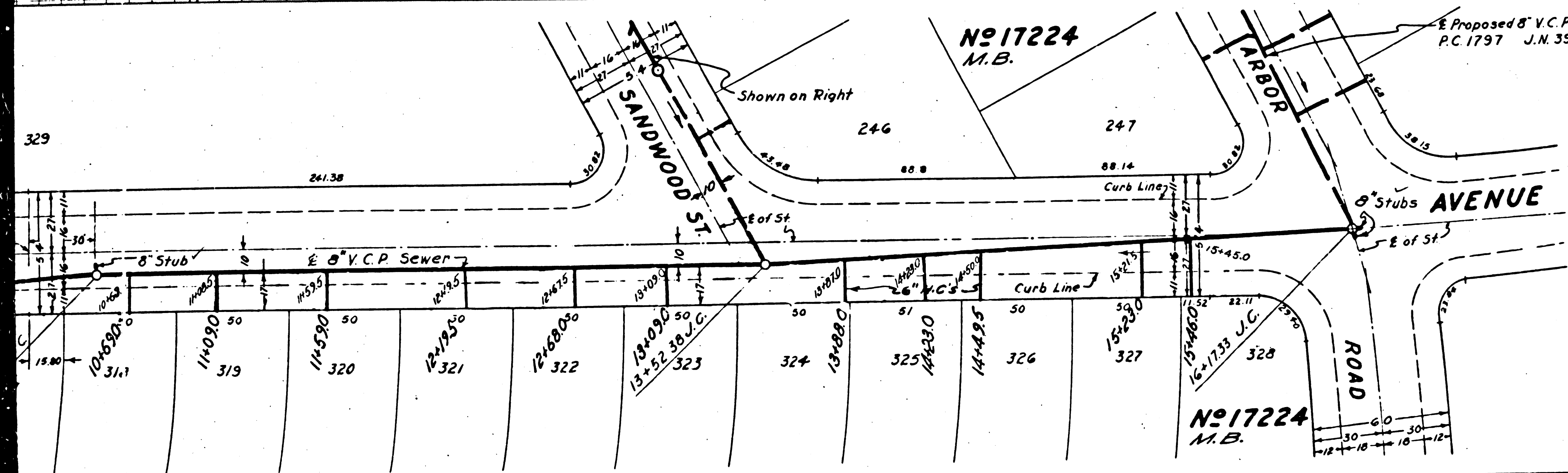
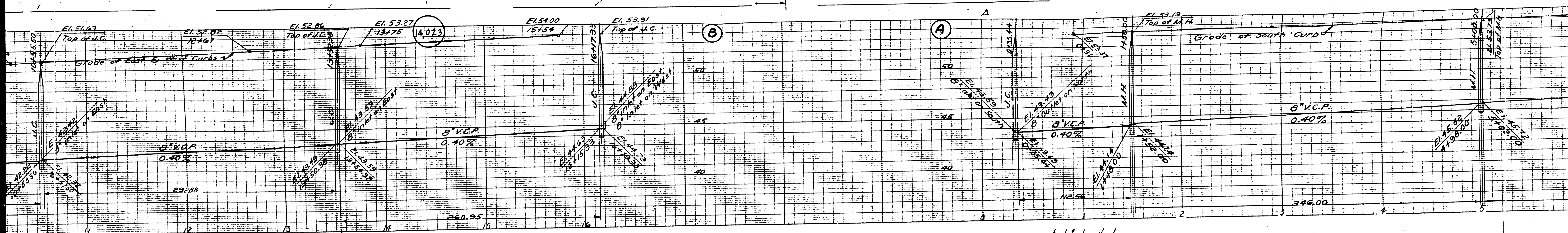
PRIVATE CONTRACT NO. 1813  
W. S. 30  
SHEET 2 OF 5 SHEETS  
JUNE 1951  
PREPARED IN THE OFFICES OF  
**ENGINEERING SERVICE CORPORATION**

BY *E. J. Xany*  
COUNTY ENGINEER  
116 P. E. NO. 106

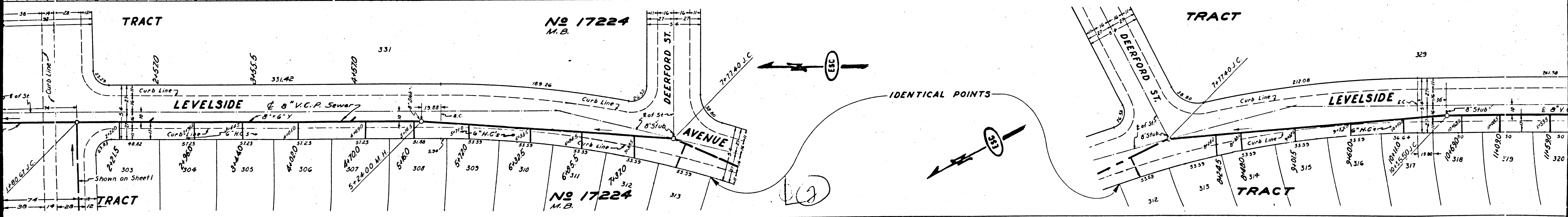
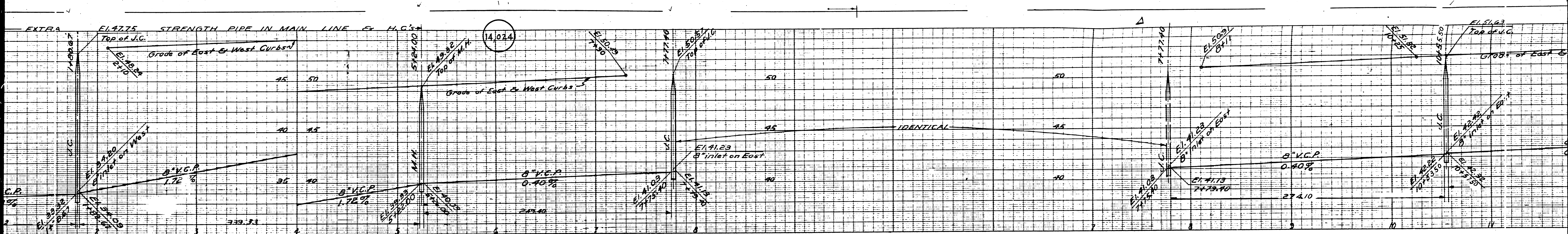
FOR LAMBD  
SEE PLAN NO. S-44  
FOR CONSTRUCTION NOTES SEE SHEET 1

COUNTY OF LOS ANGELES, CALIFORNIA  
APPROVED: *[Signature]*  
COUNTY ENGINEER  
APPROVED BY: *[Signature]* OFFICE ENGINEER  
CHIEF ENGINEER OF COUNTY  
SANITATION DISTRICT NO. 3  
CHECKED: *Hubert P. Baker* 7-17-51  
OFFICE OF COUNTY ENGINEER REG. C. E. NO. 2412  
before breaking into any existing structure  
and before final acceptance of this work,  
County Sanitation District should be notified  
in order that required inspection may be made.

17224  
PC 1813  
LS NO. 15354

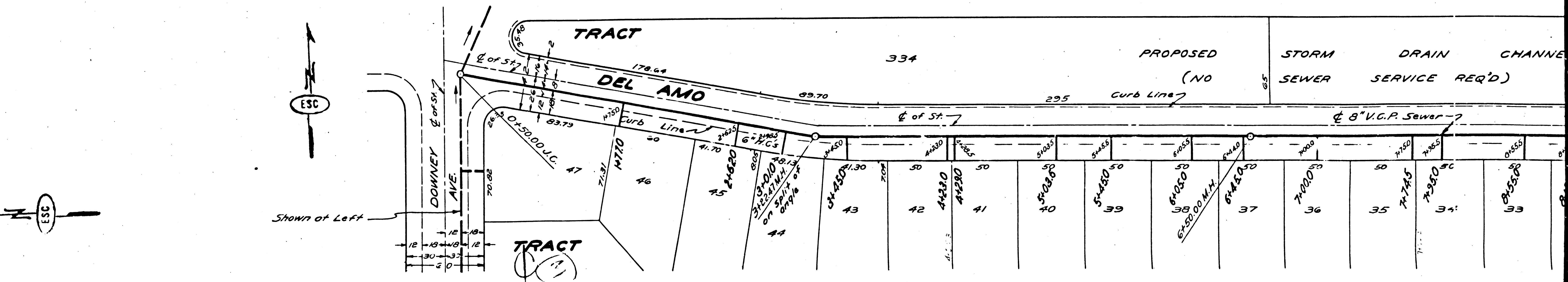
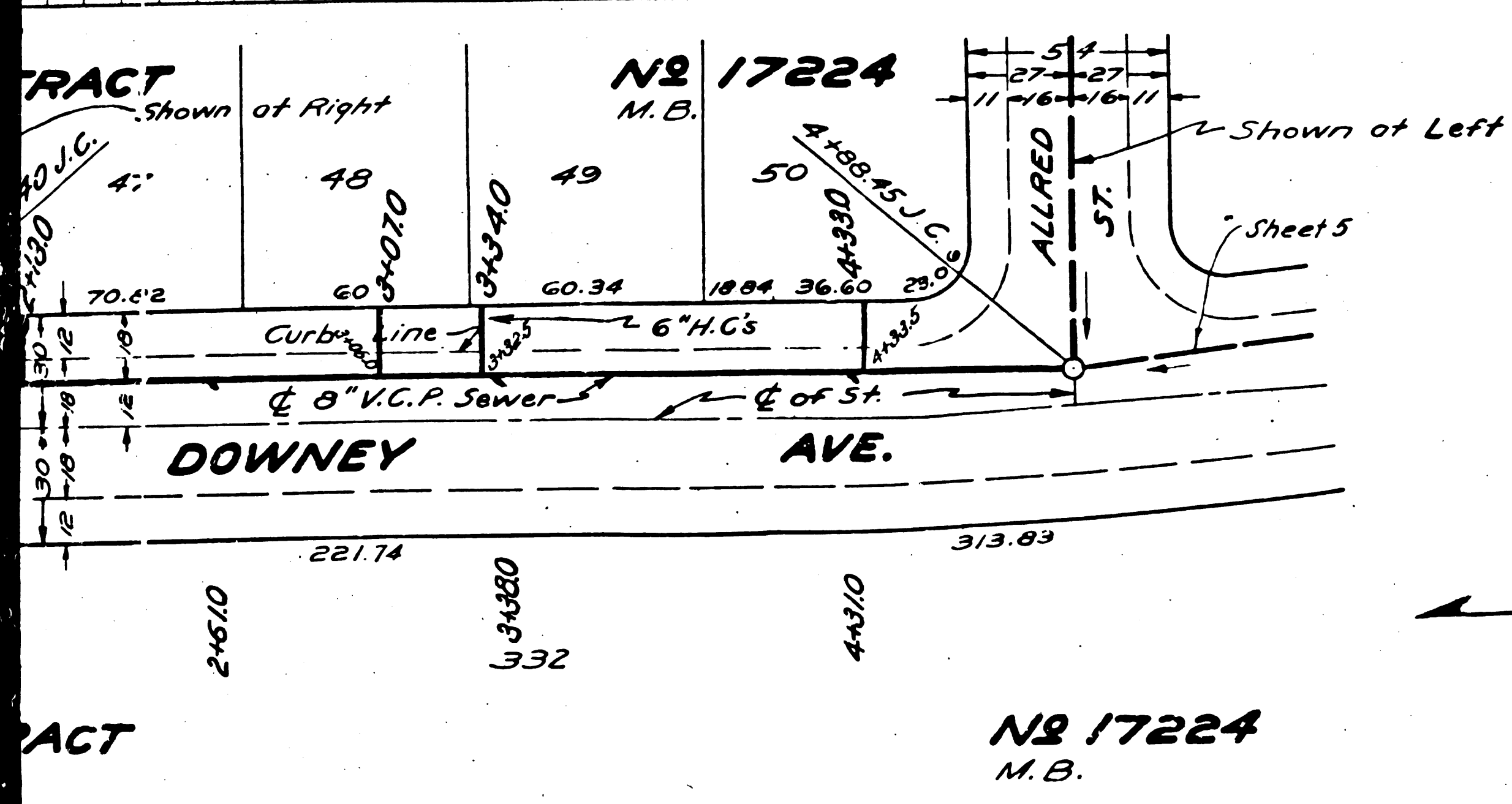
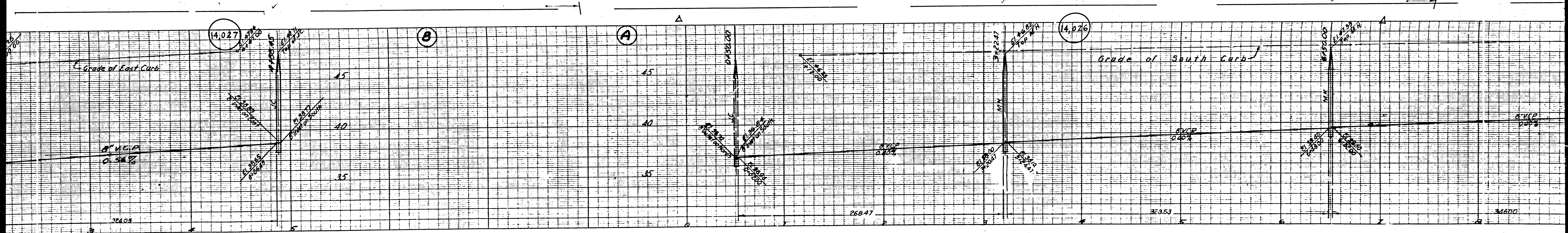


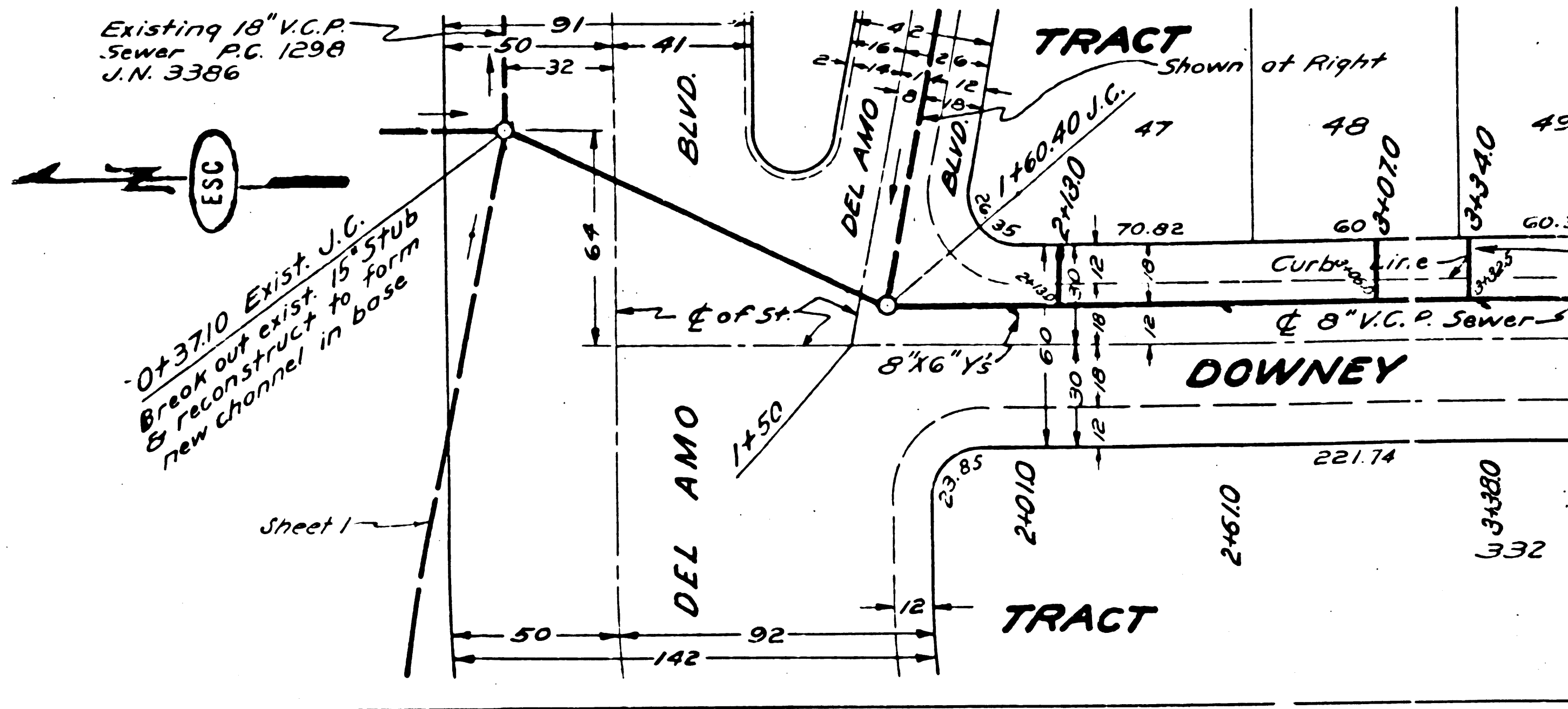
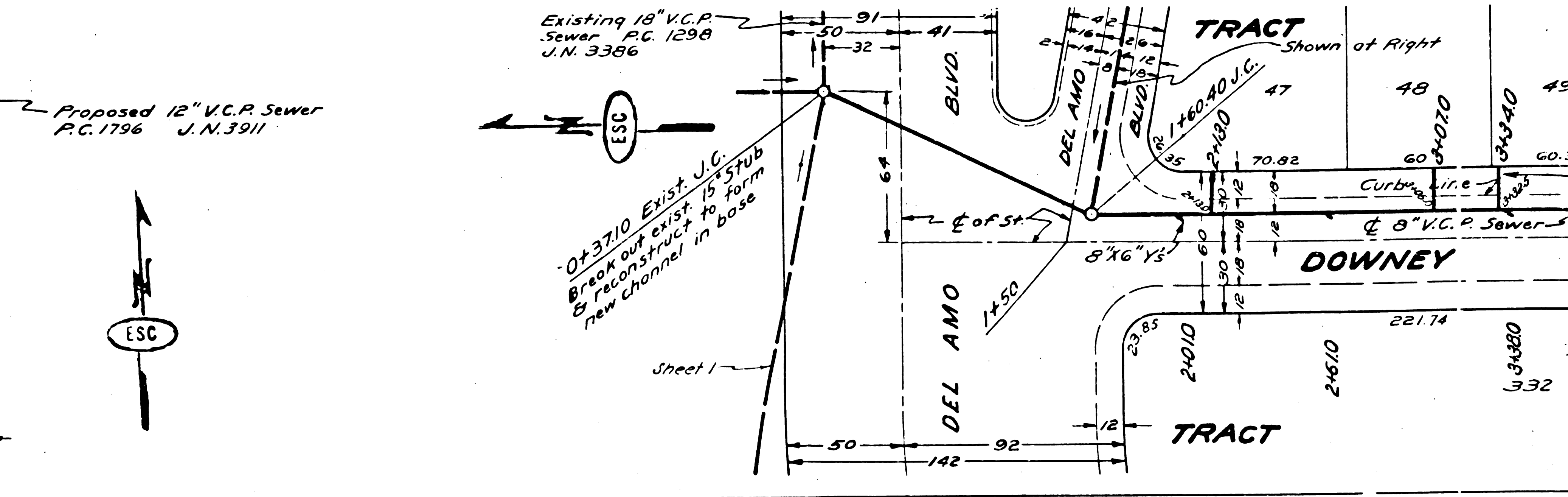
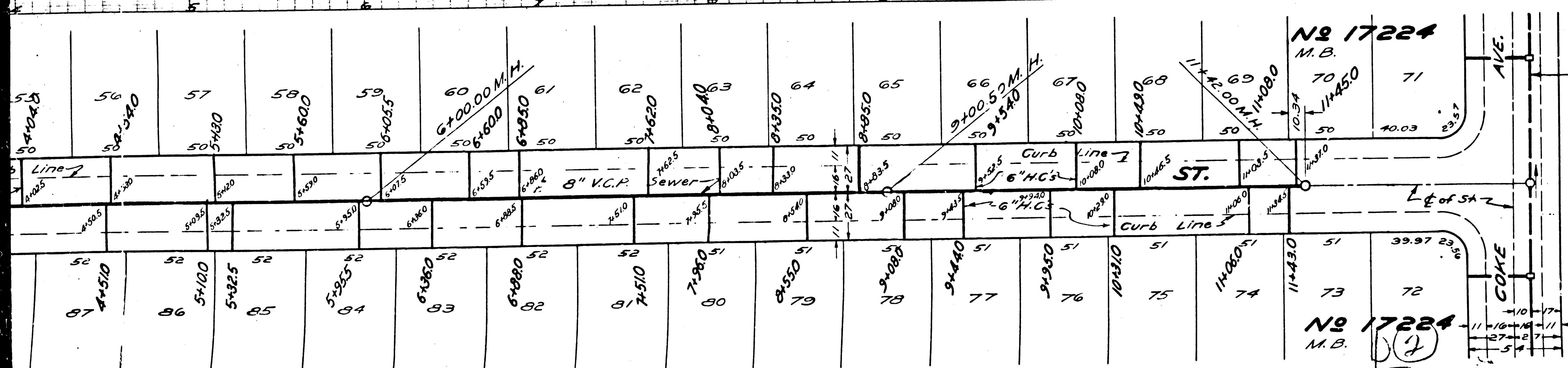
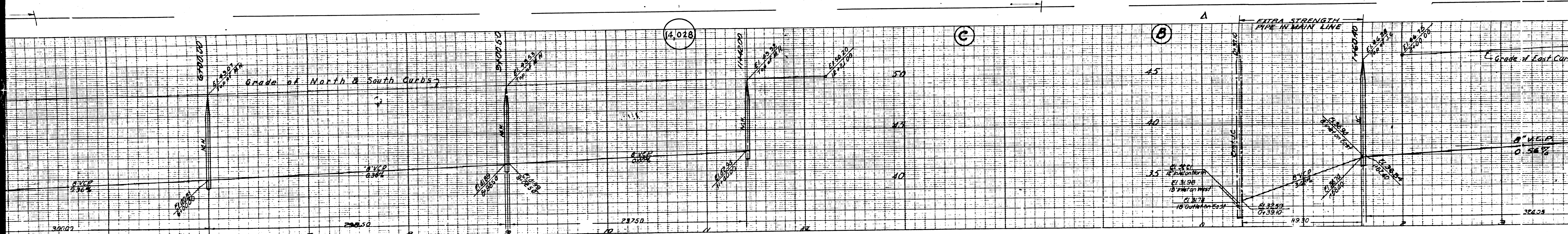
13





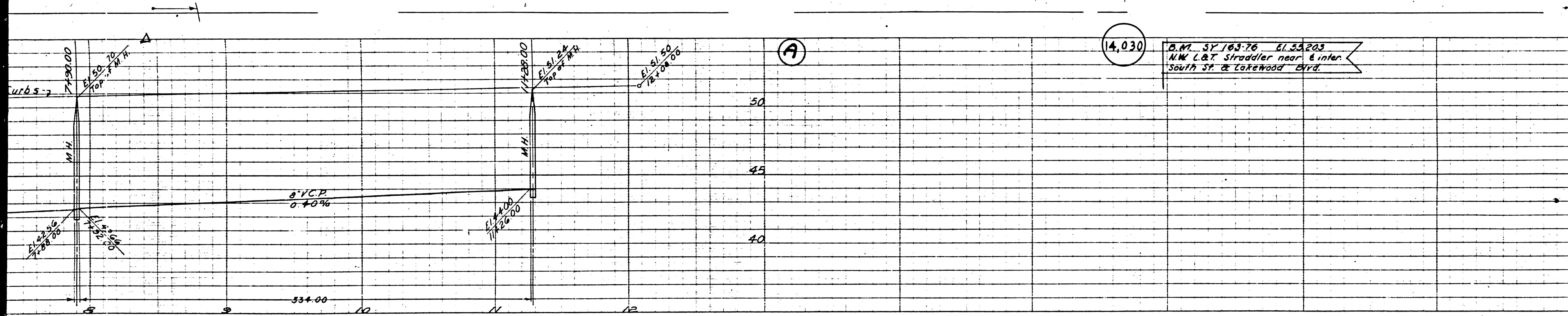




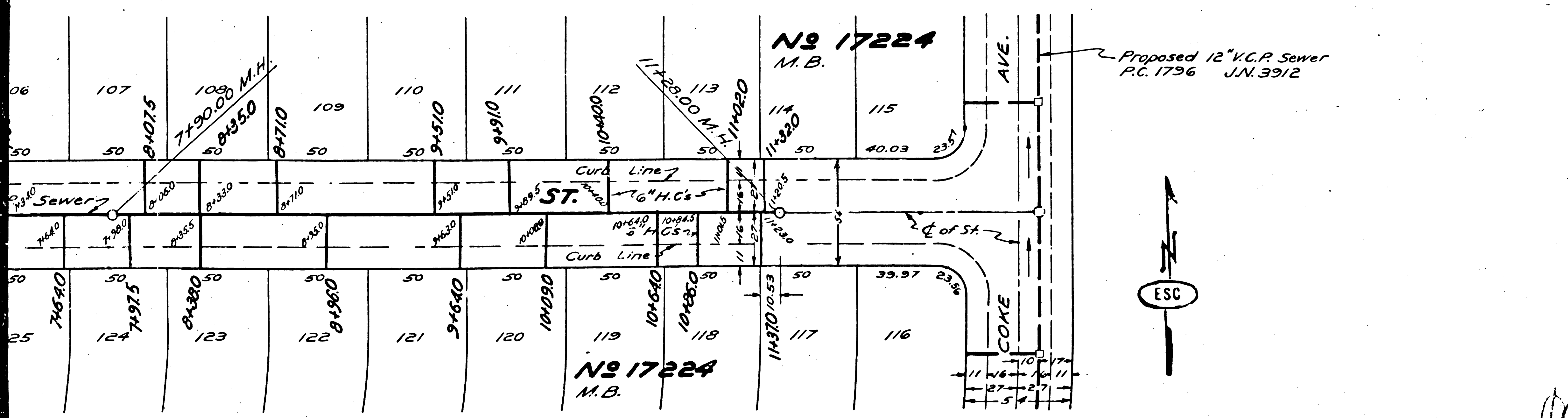








PROFILE ALIGNMENT AND GRADE OF  
**SANITARY SEWERS**  
 TO BE CONSTRUCTED IN  
**DEERFORD ST.**  
 BETWEEN COKE AVE. & DOWNEY AVE.  
**LOOMIS ST.**  
 BETWEEN COKE AVE. & DOWNEY AVE.  
**SANDWOOD ST.**  
 BETWEEN COKE AVE. & DOWNEY AVE.  
 IN TRACT NO 17224  
 PRIVATE CONTRACT NO. 1813  
 W.B. 30  
 SHEET 4 OF 5 SHEETS  
 SCALE VERT. 1" = 4'  
 HOR. 1" = 40'  
 JUNE 1951  
 PREPARED IN THE OFFICES OF  
**ENGINEERING SERVICE CORPORATION**



**ENGINEERING SERVICE CORPORATION**  
 1127 W WASHINGTON BLVD.  
 LOS ANGELES 15 CALIF. PR 7266

REVISIONS

TRACED BY H.S.  
 DESG'D BY K.S.  
 CK'D BY  
 SUBMITTED:

SUB STRUCTURES CK'D

W. O. NO.	DWG NO.	DATE	SCALE	L.S.	P.R.
5977-124		JUNE 1951	VERT. 1" = 4' HOR. 1" = 40'	L-7	

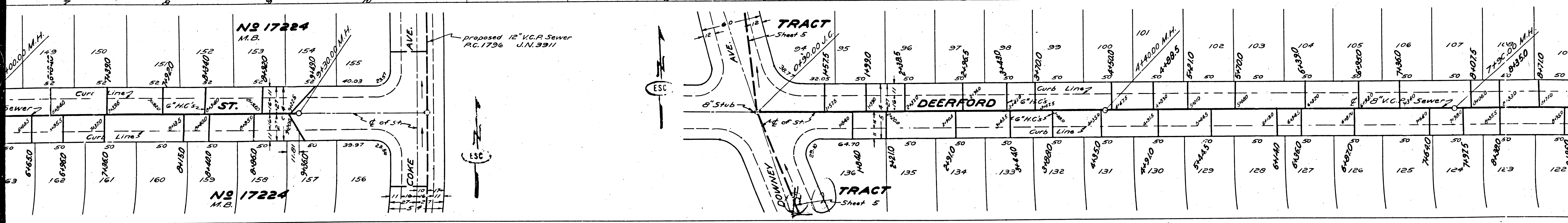
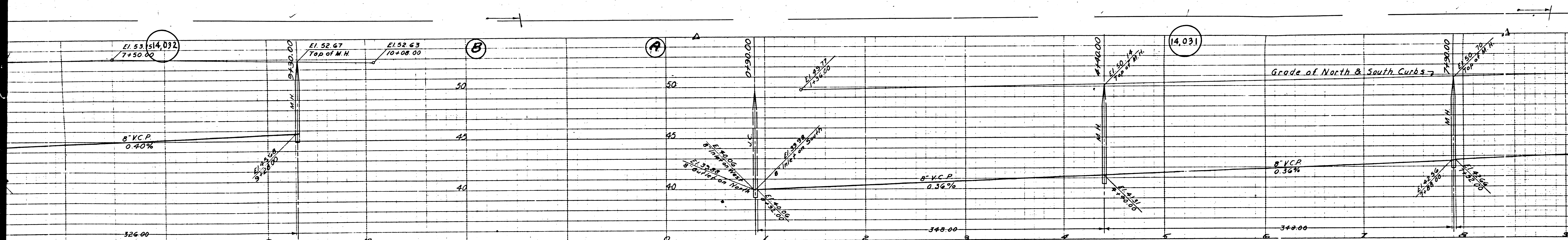
Before breaking into any existing structure  
 and before final acceptance of this work,  
 County Sanitation District should be notified  
 in order that required inspection may be made.

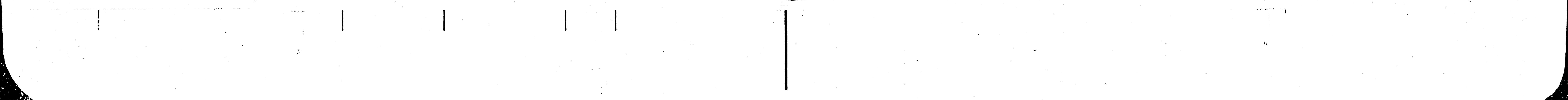
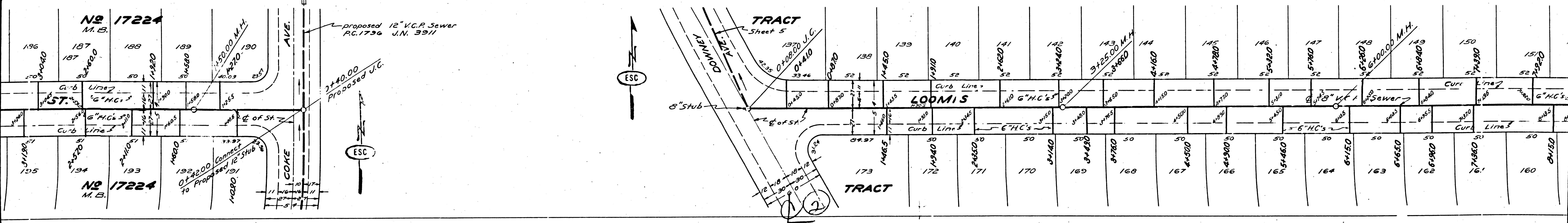
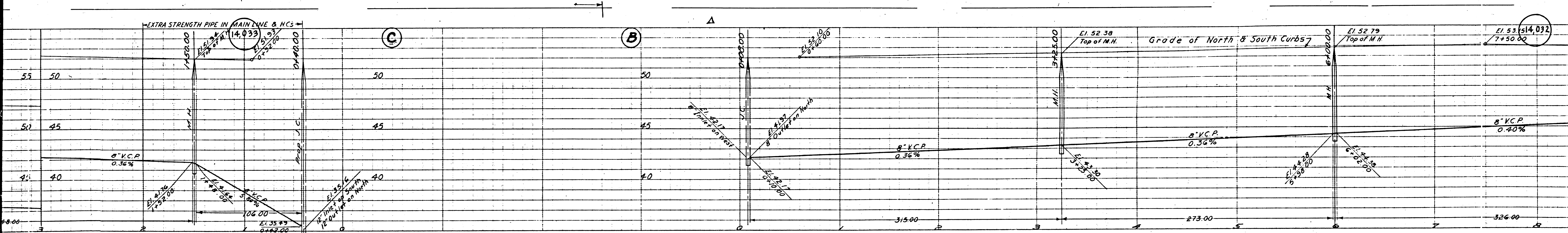
JOB LEGEND  
 SEE PLAN NO. S-44  
 FOR CONSTRUCTION NOTES SEE SHEET 1

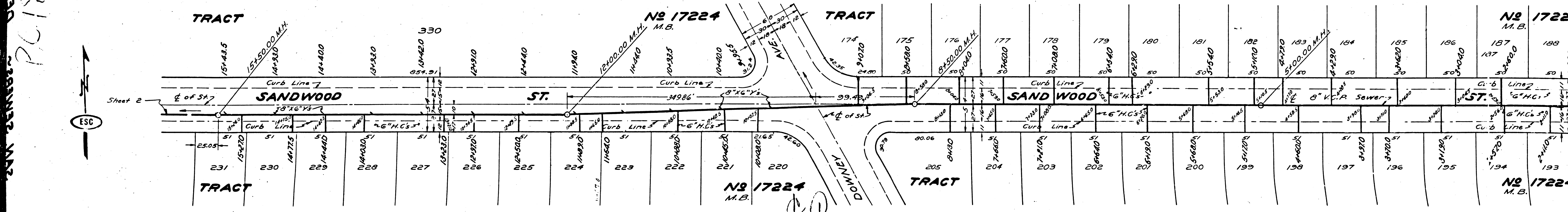
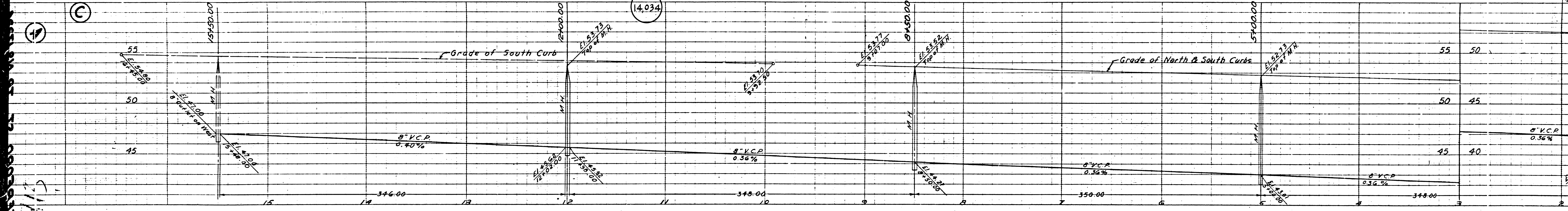
COUNTY OF LOS ANGELES, CALIFORNIA  
 APPROVED: *[Signature]*  
 COUNTY ENGINEER  
 APPROVED BY: *[Signature]*  
 CHIEF ENGINEER OF COUNTY  
 SANITATION DISTRICT NO. 3  
 CHECKED: *[Signature]* 7-19-51  
 OFFICE OF COUNTY ENGINEER, RIG. C. & NO. 642



(4)







2446 CENTER DEPRESSO CE 15 10 1915  
 PC 1815

14.034

ESC



Sheet 2

TRACT

SANDWOOD ST.

NO 17224 M.B.

TRACT

SANDWOOD ST.

NO 17224 M.B.

NO 17224 M.B.

TRACT

NO 17224 M.B.

TRACT

NO 17224 M.B.