

**PROFILE, ALIGNMENT AND GRADE OF
SANITARY SEWERS
TO BE CONSTRUCTED IN
MEYLER AVENUE
BETWEEN 23RD STREET AND 23RD STREET
229TH STREET
BETWEEN BERENDO AVENUE AND MEYLER AVENUE
BERENDO AVENUE
BETWEEN OCEAN STREET AND 23RD STREET
OCEAN STREET
BETWEEN EASTERLY AND WESTERLY TRACT BOUNDARY
IN TRACT NO. 16159**

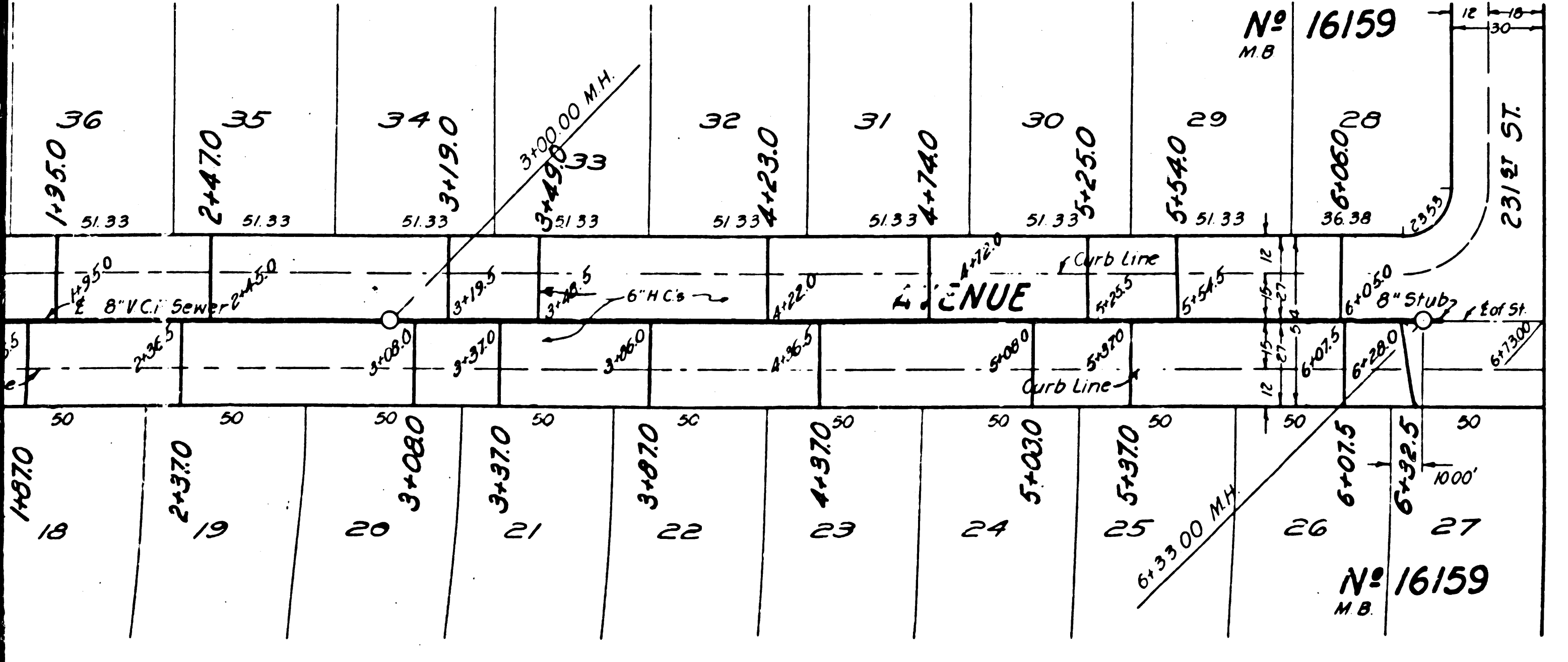
**PRIVATE CONTRACT NO. 1024
JULY 1951**

SHEET 1 OF 1 SHEETS

SCALE: HORIZ. 1" = 40'
VERT. 1" = 4'

**PREPARED IN THE OFFICES OF
ENGINEERING SERVICE CORPORATION**

BY C. F. King
Reg. Eng. No. 3692

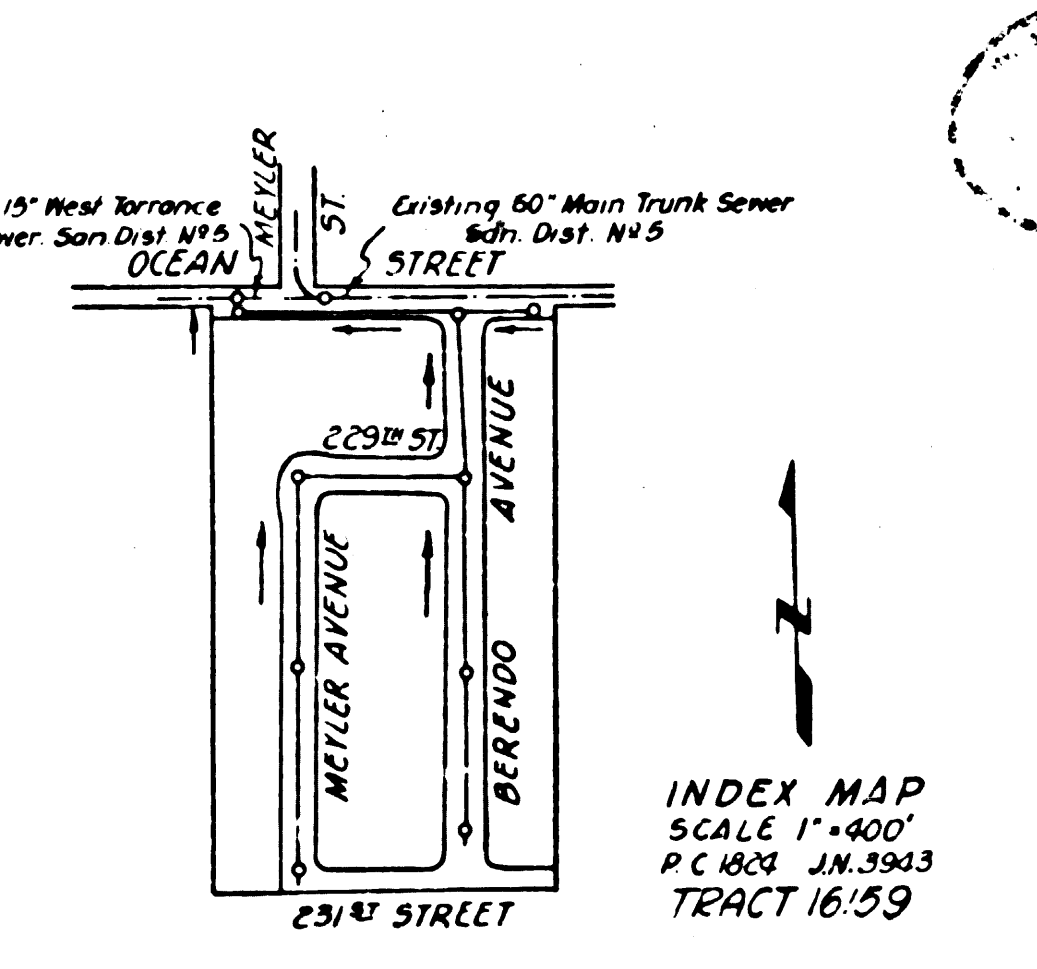


ENGINEERING SERVICE CORPORATION
1127 W WASHINGTON BLVD.
LOS ANGELES 15 CALIF. PR. 7281

REVISIONS					

TRACED BY A.M.C.
DESIGNED BY K.S.
CHECKED BY
SUBMITTED

SUB STRUCTURES CHECKED					
W. O. NO.	DWG. NO.	DATE	SCALE	L. B.	P. B.
6291-1		July 1951	1" = 40'		



NOTE:
GRADES TO WHICH THIS IMPROVEMENT IS TO BE CONSTRUCTED ARE SHOWN ON PLANS AND PROFILES. GRADE POINTS FOR TOP OF CURB, CENTER LINE OF STREETS OR CENTER LINE OF ALLEY ARE SHOWN BY CIRCLES ON PROFILES. AT ALL POINTS BETWEEN DESIGNATED POINTS THE GRADE SHALL BE ESTABLISHED SO AS TO CONFORM TO A STRAIGHT LINE DRAWN BETWEEN SAID DESIGNATED POINTS.
ELEVATIONS ARE IN FEET ABOVE U.S. G.S. DATUM OR MEAN SEA LEVEL.
THIS DRAWING AND THEREAFTER ARE HEREBY MADE A PART OF THE SPECIFICATIONS.
WORK SHALL BE CONSTRUCTED ACCORDING TO SPECIFICATIONS ON FILE IN THE OFFICE OF THE COUNTY ENGINEER AND SHALL BE PROSECUTED ONLY IN THE PRESENCE OF THE COUNTY ENGINEER.
BEFORE WORK CAN BE STARTED THE CONTRACTOR MUST OBTAIN A PERMIT TO EXCAVATE IN COUNTY STREETS FROM THE L. A. COUNTY ROAD DEPT. 100 WEST 5TH ST. AND MAKE A DEPOSIT WITH THE COUNTY ENGINEER, 328 COUNTY ENGINEERING BUILDING SUFFICIENT TO COVER THE COST OF CONSTRUCTION INSPECTION AND RECORD PLANS.
APPROVAL OF THIS PLAN BY THE COUNTY OF LOS ANGELES DOES NOT CONSTITUTE A REPRESENTATION AS TO THE ACCURACY OF THE LOCATION OF THE EXISTING UTILITIES OR THE EXISTENCE OF ANY OTHER GROUND UTILITY, PIPE, OR STRUCTURE WITHIN THE LIMITS OF THIS PROJECT. THIS NOTE APPLIES TO ALL SHEETS COUNTY OF LOS ANGELES, CALIFORNIA.

APPROVED: [Signature]
CITY ENGINEER

APPROVED BY: [Signature] Office Engineer
CHIEF ENGINEER OF COUNTY
SANITATION DISTRICT NO. 8

CHECKED: John A. [Signature] 9-15-51
CHIEF OF COUNTY ENGINEER REG. C. E. NO. 7784

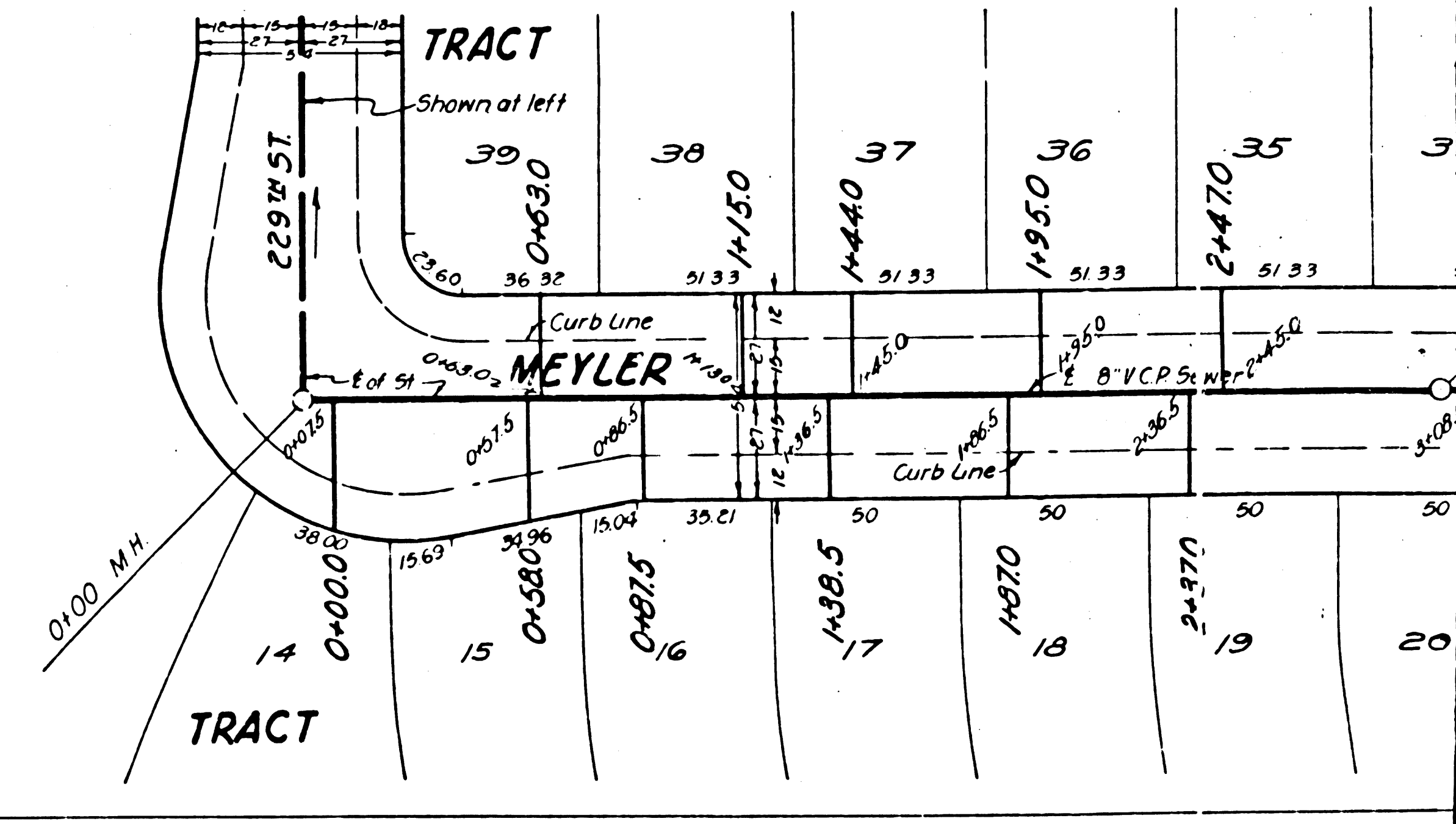
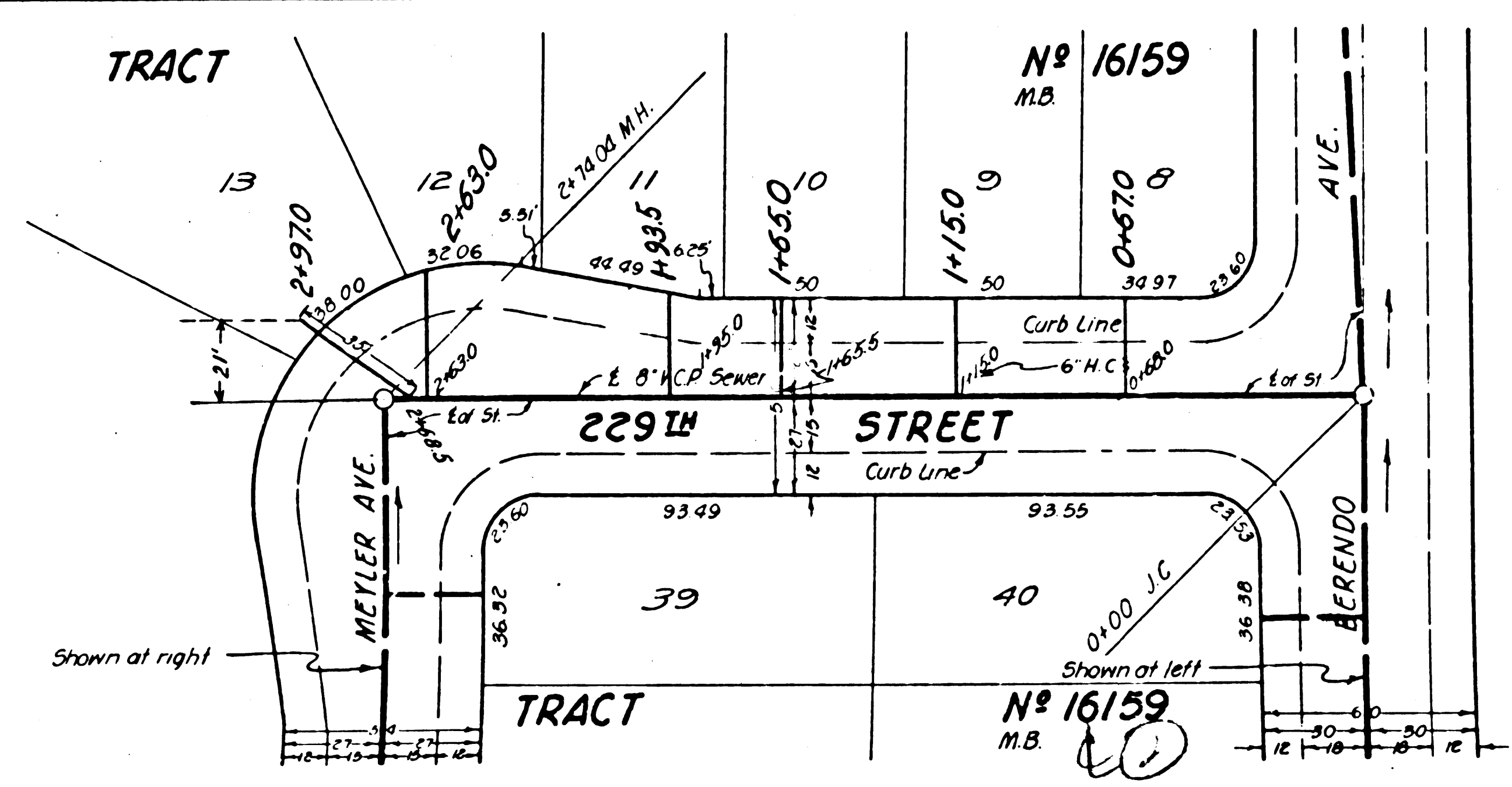
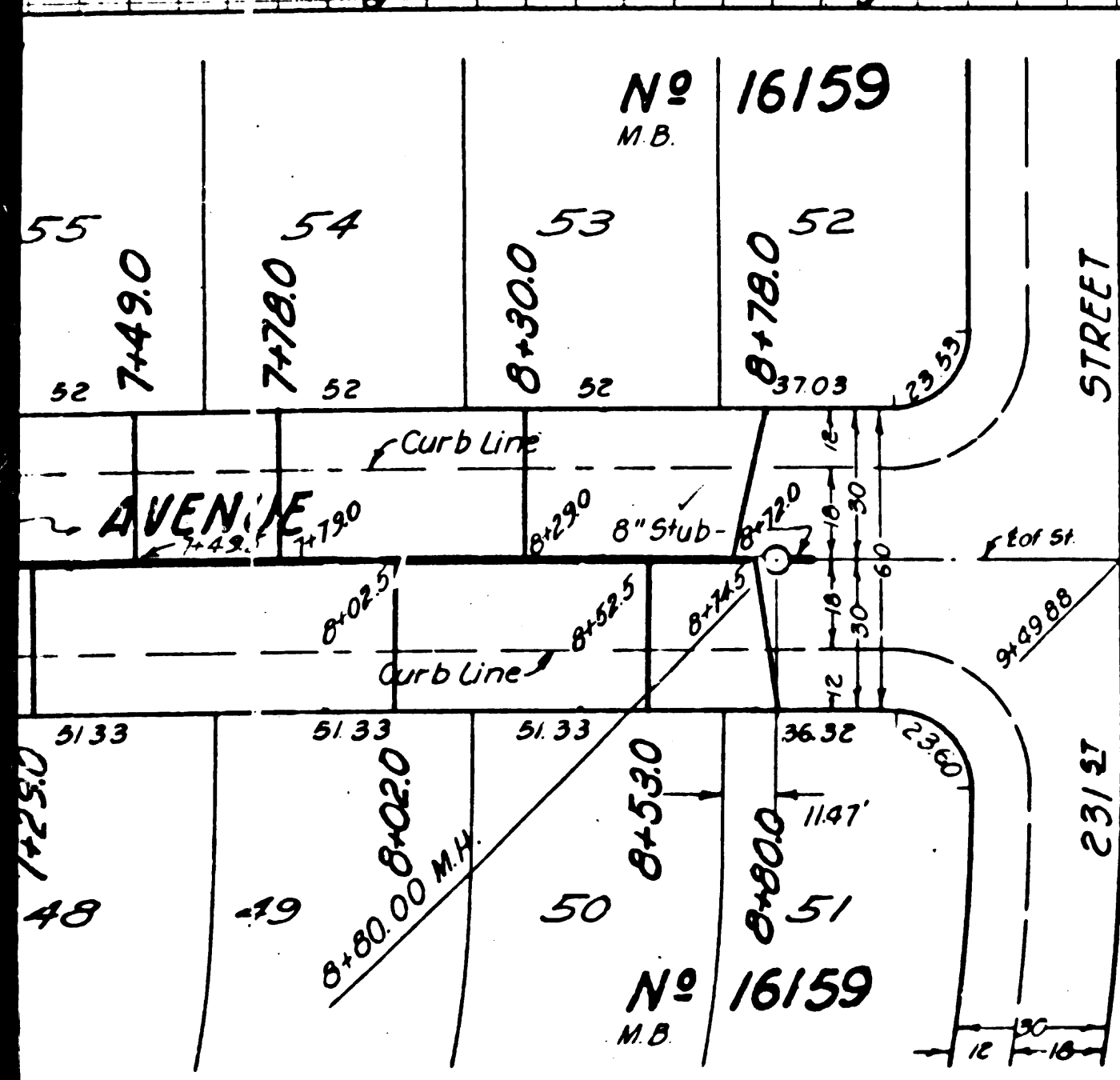
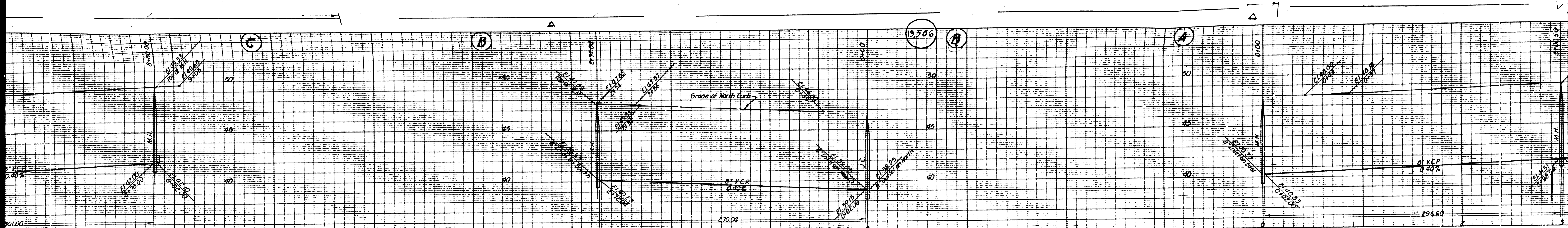
before breaking into any existing structure
and before final acceptance of this work,
County Sanitation District should be notified
in order that required inspection may be made.

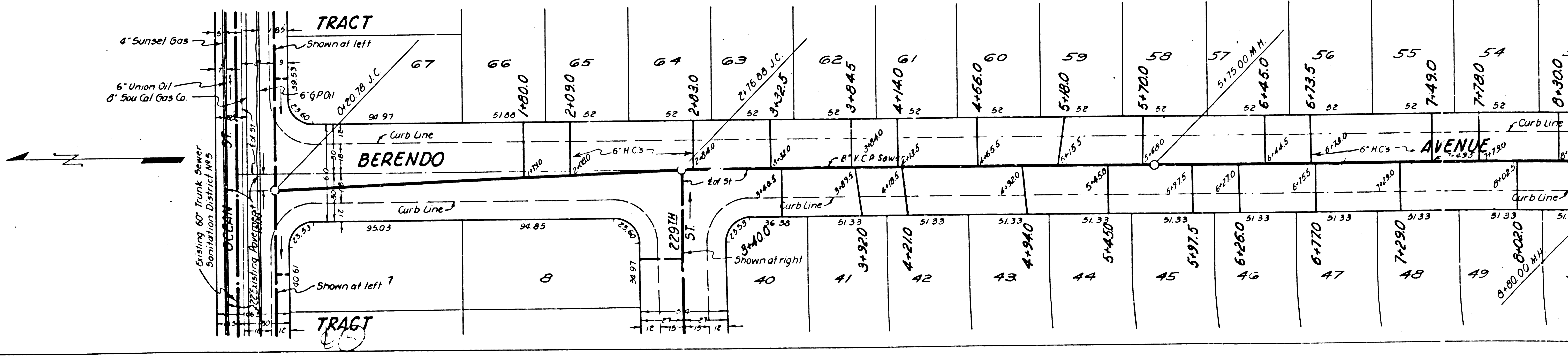
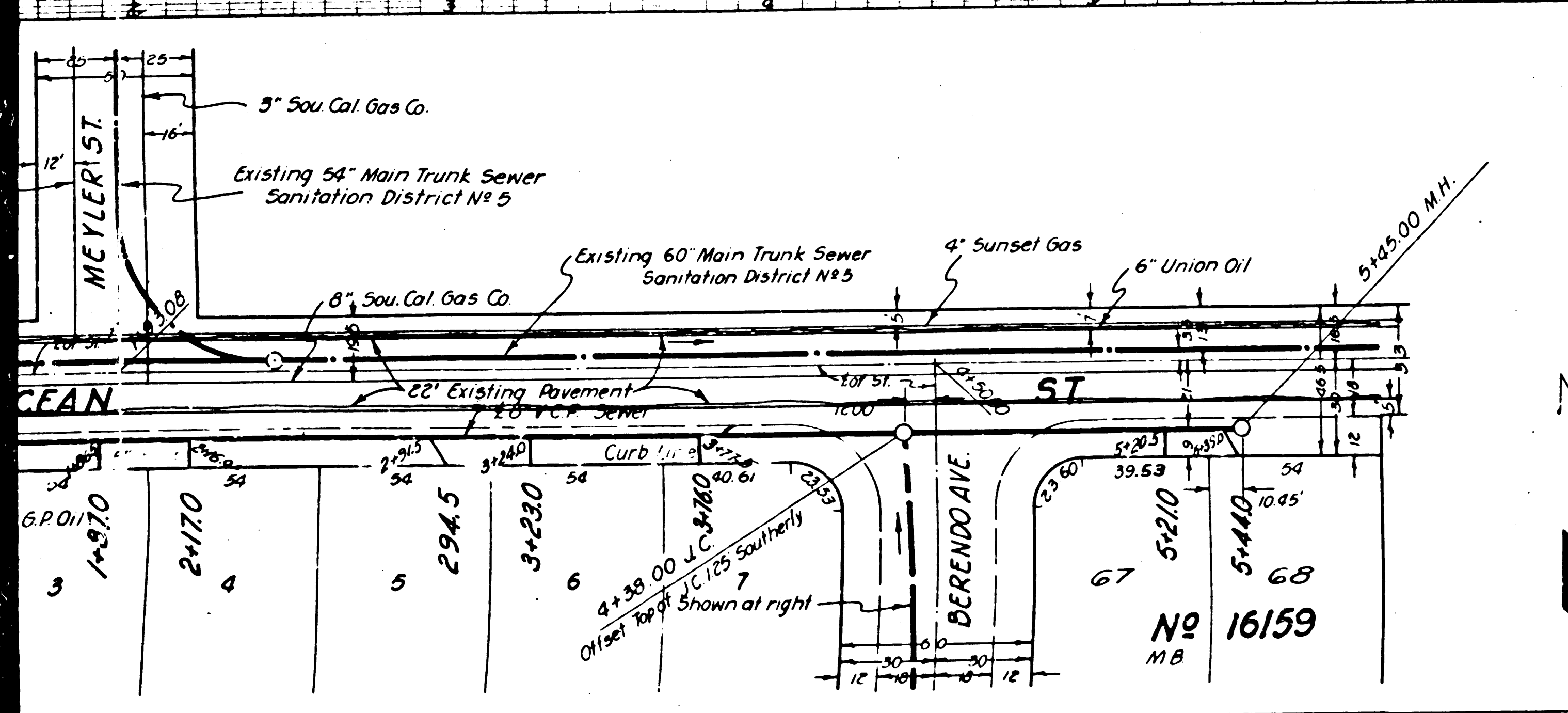
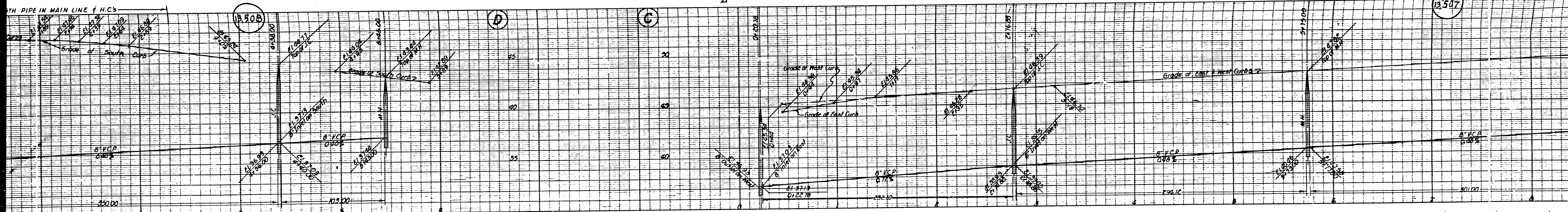
16159

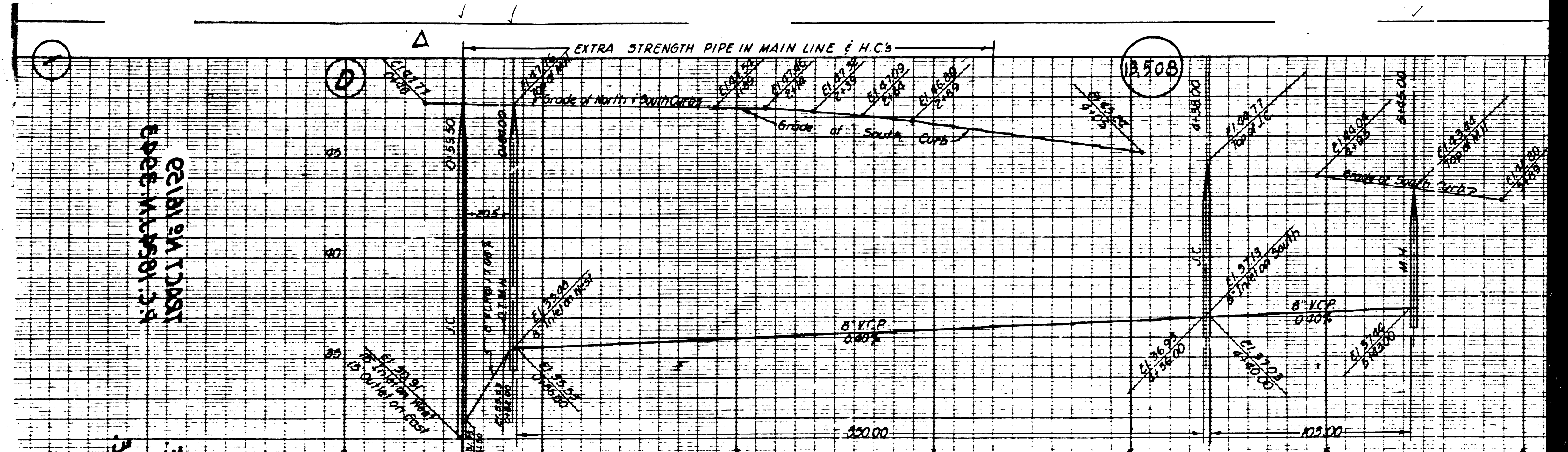
FOR LEGEND
SEE PLAN NO. 5-4-54

MEYLER AVENUE
BERENDO AVENUE
OCEAN STREET
23RD STREET

R.C. 1854 J.N. 3943
TRACT 16159







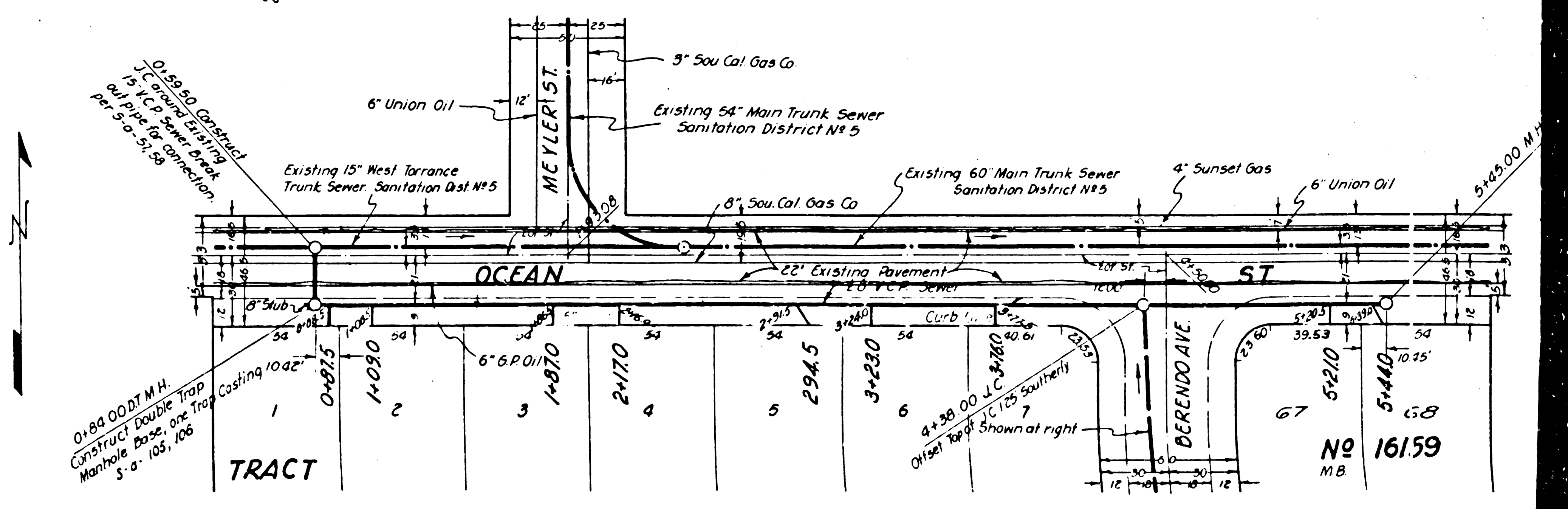
02/01/94 T.D.B.T.
 03/05/94 W.P.B.T.

01/04/93 Y.M.
 12/18/88 S.M.A.
 12/04/80 M.B.

PC 1874

23/03/83 M.A.S.

①



01/04/00 D.T.M.H.
 Curvature Base of Trap
 5'-0" 105, 106

TRACT

No
 MB 16159